

State University of New York College at Buffalo - Buffalo State University

Digital Commons at Buffalo State

Juanita Hunter, RN & NYSNA Papers
[1973-1990]

Organizations and Individual Collections

1986

Student Characteristics; Series I; File 170

Juanita Hunter

Follow this and additional works at: <https://digitalcommons.buffalostate.edu/jhunter-papers>



Part of the [Health Law and Policy Commons](#), [History Commons](#), and the [Nursing Commons](#)

Recommended Citation

"Student Characteristics; Series I; File 170." Juanita Hunter, RN & NYSNA Papers [1973-1990]. Monroe Fordham Regional History Center, Archives & Special Collections Department, E. H. Butler Library, SUNY Buffalo State.

<https://digitalcommons.buffalostate.edu/jhunter-papers/272>

This Article is brought to you for free and open access by the Organizations and Individual Collections at Digital Commons at Buffalo State. It has been accepted for inclusion in Juanita Hunter, RN & NYSNA Papers [1973-1990] by an authorized administrator of Digital Commons at Buffalo State. For more information, please contact digitalcommons@buffalostate.edu.

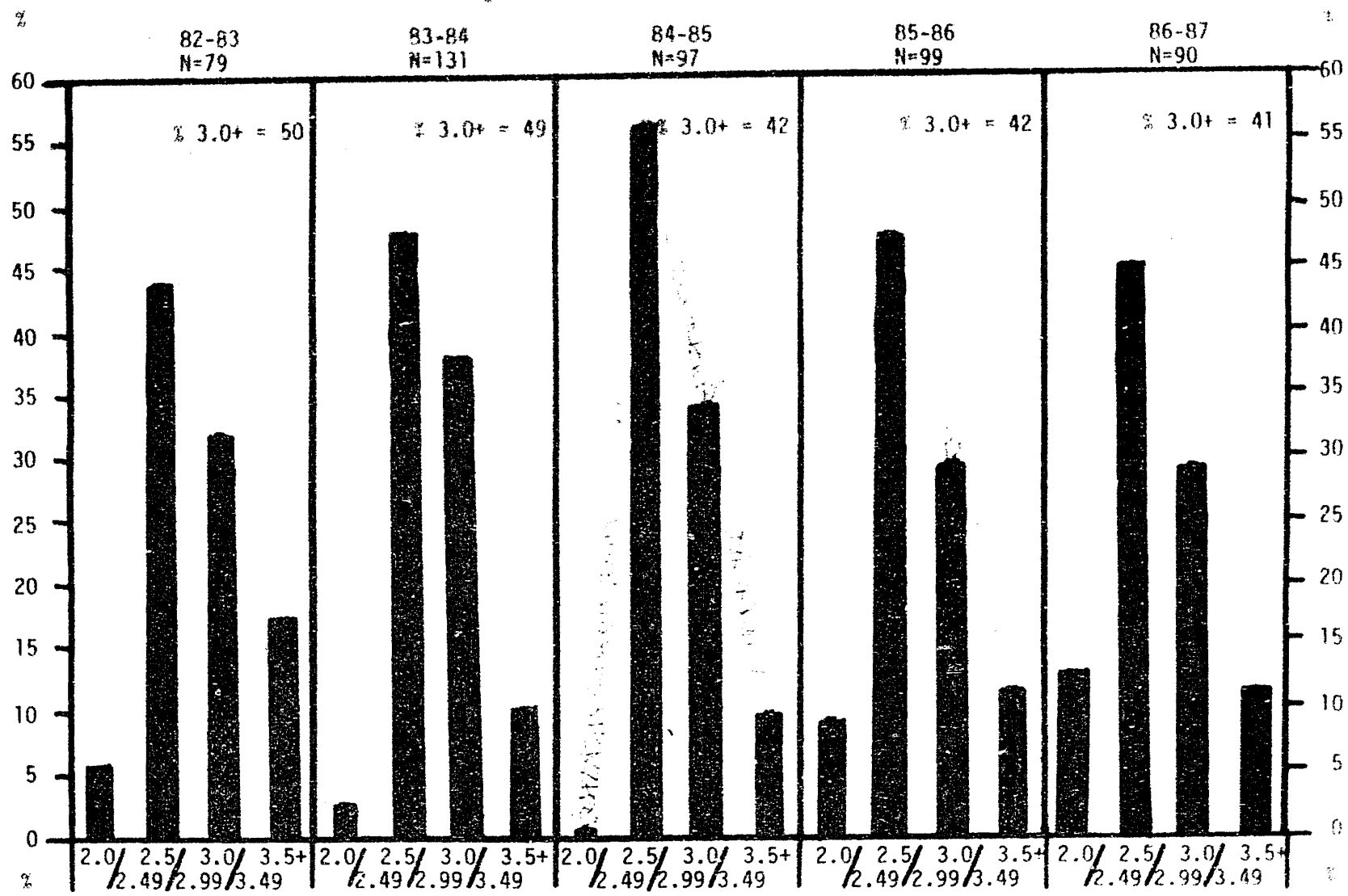
#170 Student

CHARACTERISTIC

PAST AND CURRENT UNDERGRADUATE CHARACTERISTICS

#170 Student Characteristic

Undergrad Admissions Cycles - Basic Program



Overall G.P.A. of Total Applicant Pool

Minimum
G.P.A.
for Admissions

2.567

2.947

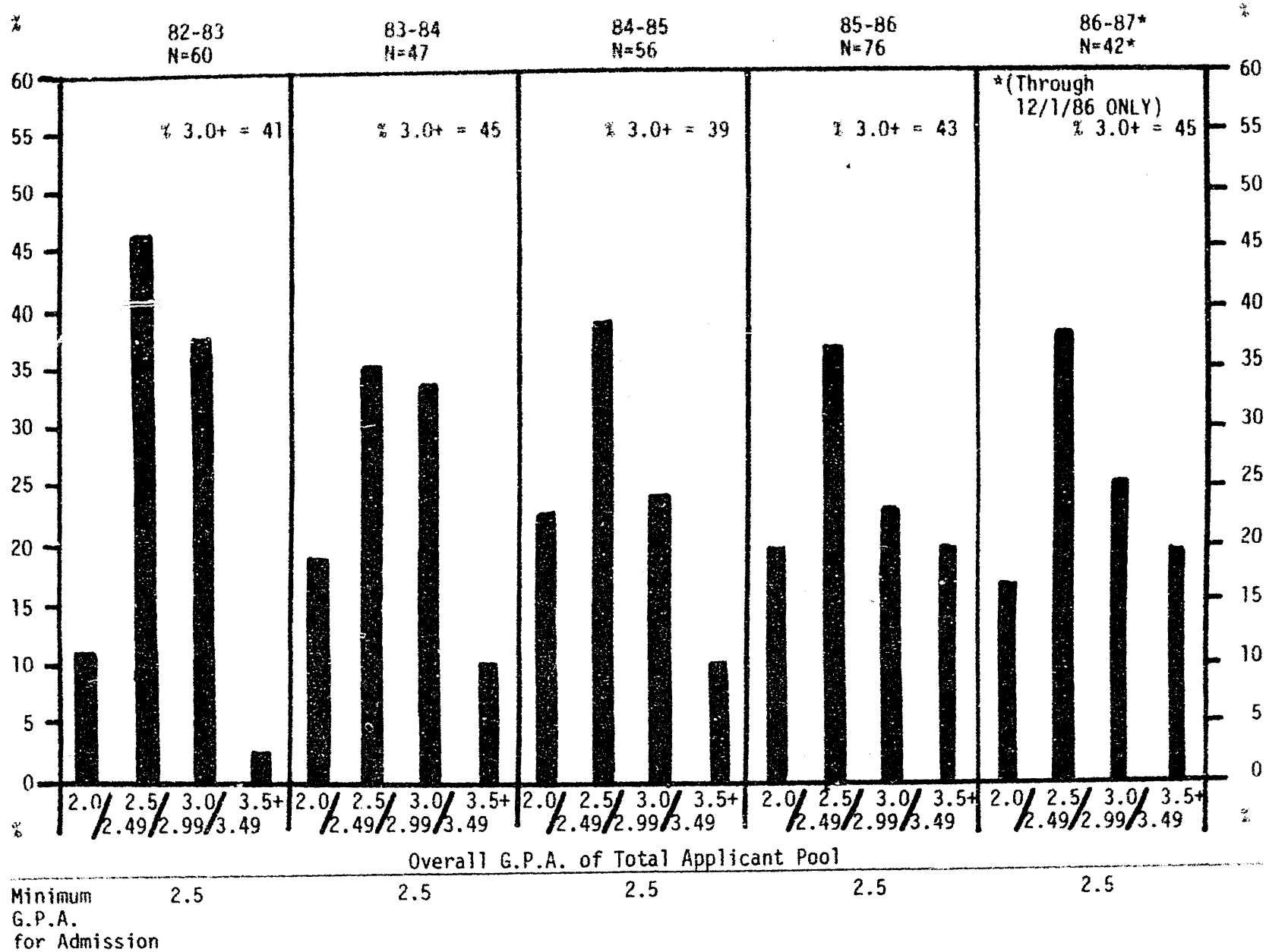
2.454

2.467

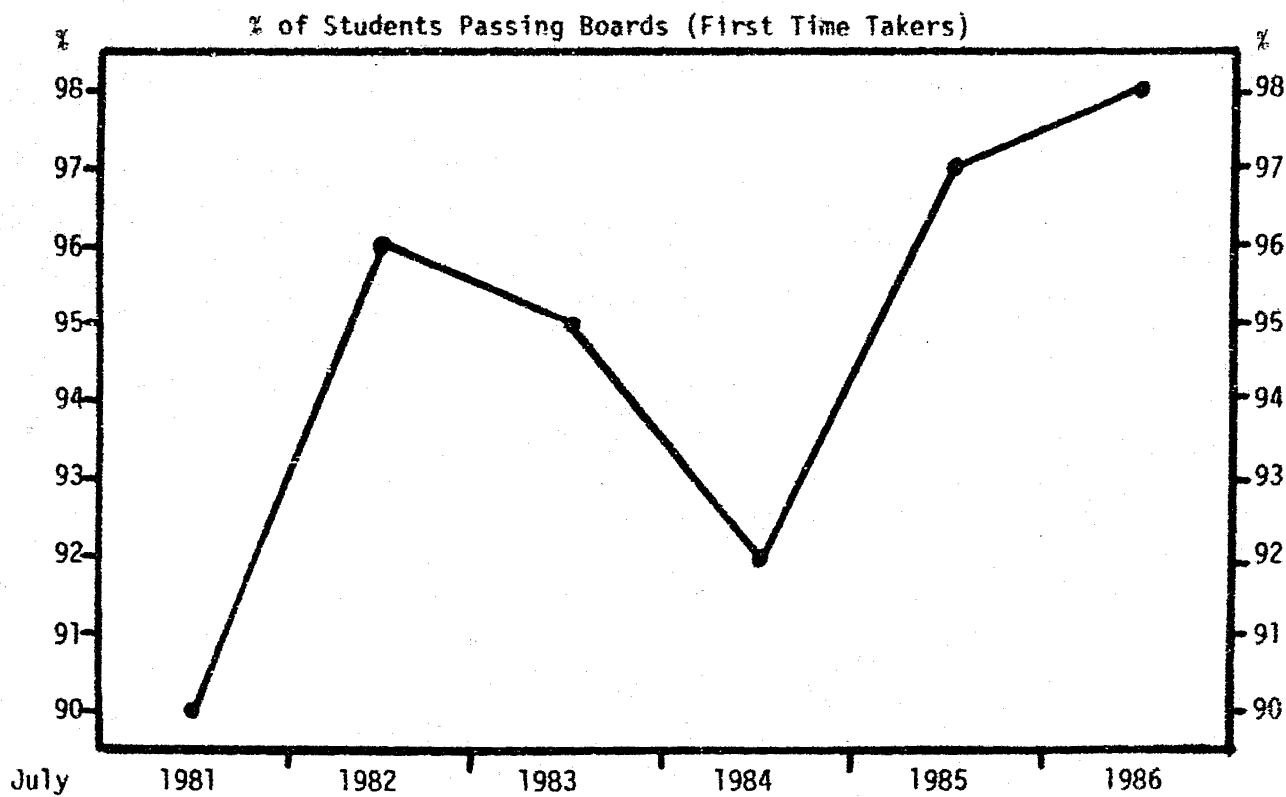
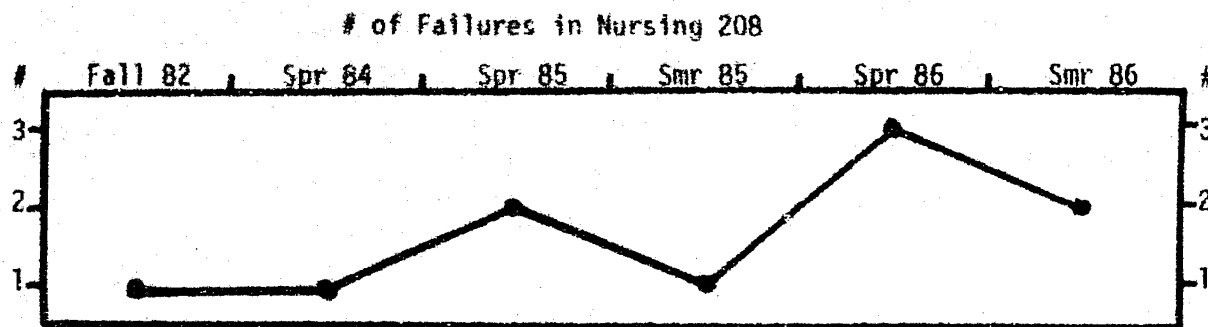
2.652

#170 Student Characteristic

Undergrad Admissions Cycles - RN Track Program



#170 Student Characteristic



#170 Student Characteristic

Faculty Retreat

December 5, 1986

Summary: New York State Enrollment Data

Source: Nursing Education Trends 1980-1984 Draft
New York State Education Department
Office of the Professions Nursing Education Unit
Fall 1986

I. Generic Professional Nursing Programs

Tables 2 and 7

Table 8 (From 1984 publication - Educational Preparation for
Practical and Professional
Nursing in New York State)

II. Degree Programs for RNs

Tables 16, 20, and 21

III. Master's and Doctoral Enrollments and Graduations

Tables 22 and 23

IV. Admissions and Graduations by Racial/Ethnic Origin

Tables 25 and 27

V. Selected statistics of generic and RN degree programs for
Schools in the Western Region Planning Region

Table 33

#170 Student Characteristic

TABLE 2
NUMBER OF GENERIC PROFESSIONAL NURSING PROGRAMS
BY TYPE OF PROGRAM AND REGENTS PLANNING REGION

NEW YORK STATE
FALL 1984

Region	Professional Nursing Programs				Total
	Diploma	Associate	Baccalaureate ^a	Generic Master's	
Western	3	6	4	--	13
Genesee	3	4	4	--	11
Central	2	7	3	--	12
Northern	--	2	--	--	2
Northeast	6	10	5	--	21
Mid-Hudson	1	7	4	1	13
Metropolitan	4	14	9	--	27
Long Island --		4	3	--	7
Total	19	54	32	1	106

-- While there is no baccalaureate degree program located in the Northern Region, a public institution in the adjacent Central Region which has an upper-division program for RNs, offers courses at an extension site in the Northern Region.

(a) Excludes upper division baccalaureate degree programs for RNs.

#170 Student Characteristic

TABLE 7
GRADUATIONS FROM GENERIC PROFESSIONAL NURSING PROGRAMS
BY TYPE OF PROGRAM AND REGENTS PLANNING REGION
NEW YORK STATE
AUGUST 1, 1983 TO JULY 31, 1984

Region	Professional Nursing Program								Total	
	Diploma ^a		Associate ^b		Baccalaureate		Generic Master's			
	Graduations	%	Graduations	%	Graduations	%	Graduations	%	Graduations	%
Western	124	1.8%	472	6.7%	506	7.2%	--	--	1,102	15.6%
Genesee	78	1.1	264	3.7	217	3.1	--	--	559	7.9
Central	124	1.8	332	4.7	217	3.1	--	--	673	9.5
Northern	--	--	76	1.1	--	--	--	--	76	1.1
Northeast	214	3.0	495	7.0	161	2.3	--	--	870	12.3
Mid-Hudson	23	0.3	603	8.5	126	1.8	90	1.3	842	11.9
Metropolitan	164	2.3	915	12.9	913	12.9	--	--	1,992	28.2
Long Island	--	--	443	6.3	517	7.3	--	--	960	13.6
Total	727	10.3%	3,600	50.9%	2,657	37.6%	90	1.3%	7,074	100.0%

- The number of graduates from programs preparing for registered professional nurse licensure has declined steadily in the past six years. There were 632 fewer graduates in 1983-1984 than in 1982-1983.
- While there has been a steady decline in graduations from Diploma programs annually since 1978-79, Diploma programs experienced a slight increase in graduations over the previous year. Increases were experienced in six Regions, while the Metropolitan Region had a decline of 65.
- Increases in graduations of associate degree graduates were experienced in the Western, Central and Metropolitan Regions. (Western - 461 AD GRADUATIONS 1982-83).
- Baccalaureate degree programs experienced declines in graduations in all Regions, except Long Island. (Western - 524 BS GRADUATIONS 1982-83).
- Since 1982-1983, associate degree programs prepare one-half of the candidates for professional nurse licensure.

- (a) Includes last graduates of one diploma program in the Metropolitan Region.
- (b) Excludes data from one associate degree program in the Western Region and two in the Metropolitan Region.
- (c) Excludes upper division baccalaureate degree programs for R.Ns.

N.B. Graduations from Regents College Degree Programs excluded.

#170 Student Characteristic

TABLE 8. GRADUATIONS FROM PROGRAMS IN NEW YORK STATE WHICH PREPARE FOR REGISTERED PROFESSIONAL NURSE LICENSURE AND PRACTICAL NURSE LICENSURE, 1978-79 THROUGH 1982-83

Graduations by Type of Program								
Year(a)	Professional Nursing Programs						Total	Practical Nursing Programs Total
	Diploma		Associate Degree ^(b)		Baccalaureate Degree ^{(b), (c)}			
	No.	% of Total	No.	% of Total	No.	% of Total		
1978-79	1,327	16	3,849	45	3,312	39	8,488	2,853
1979-80	1,015	12	3,726	45	3,539	43	8,280	2,619
1980-81	881	11	3,758	46	3,485	43	8,124	2,494
1981-82	726	9	3,769	47	3,529	44	8,024	2,718
1982-83	712	9	3,992	52	3,002	39	7,706	2,945
1983-84	727	10.3	3,600	50.9	2,657	37.6	7,074	2,813

-- The number of graduates from programs preparing candidates for registered professional nurse licensure has declined steadily in the past five years. There were 318 fewer graduates in 1982-83 than in 1981-82.

-- More than one-half (52%) of the graduates from programs preparing candidates for registered professional nurse licensure were from associate degree programs in 1982-83.

-- In 1982-83, the number of graduates from associate degree programs was the highest in the past five years whereas the number of graduates from diploma and baccalaureate degree programs was the lowest in the past five years.

-- The number of graduates from practical nursing programs increased by 227 in 1982-83 from the previous year.

-- 1983-84 Total also includes 90 (1.3%) graduations from generic Master's

(a) Beginning August 1.

(b) Graduates from Regents College Degree Programs included.

(c) RN's graduated from "upper division" baccalaureate degree programs not included.

#170 Student Characteristic

TABLE 16
NUMBER OF DEGREE PROGRAMS FOR REGISTERED PROFESSIONAL NURSES
BY TYPE OF PROGRAM AND REGENTS PLANNING REGION

NEW YORK STATE

FALL 1984

Region	Degree Programs for RNs				Total
	Baccalaureate for RNs	Baccalaureate to Master's	Master's ^a	Doctoral	
Western	1	--	2	--	3
Genesee	2	--	1	1	4
Central	--	1	2	--	3
Northern	--	--	--	--	--
Northeast	1	--	1	--	2
Mid-Hudson	4	--	3	--	7
Metropolitan	4	--	6	2	12
Long Island	1	1	2	1	5
Total	13	2	17	4	36

(a) Excludes data from the generic master's program.

#170 Student Characteristic

TABLE 20
ENROLLMENT IN DEGREE PROGRAMS FOR REGISTERED PROFESSIONAL NURSES
BY TYPE OF PROGRAM AND REGENTS PLANNING REGION

NEW YORK STATE
OCTOBER 15, 1984

Region	Degree Programs for RNs									
	Baccalaureate for RNs		Baccalaureate to Master's ^a		Master's ^b		Doctoral		Total	
	Enroll- ment	%	Enroll- ment	%	Enroll- ment	%	Enroll- ment	%	Enroll- ment	%
Western	104	2.0%	--	--	357	6.9%	--	--	461	8.9%
Genesee	107	2.1	--	--	150	2.9	25	0.5	282	5.5
Central	--	--	16	0.3	234	4.5	--	--	250	4.8
Northern	--	--	--	--	--	--	--	--	--	--
Northeast	328	6.4	--	--	175	3.4	--	--	503	9.8
Mid-Hudson	578	11.2	--	--	316	6.1	--	--	894	17.3
Metropolitan	726	14.1	--	--	1,066	20.7	248	4.8	2,020	39.2
Long Island	169	3.3	9	0.2	480	9.3	90	1.7	748	14.5
Total	2,012	39.1%	25	0.5%	2,778	53.9%	363	7.0%	5,158	100.0%

- Upper-division baccalaureate programs indicated enrollment declines from the previous year in all regions except the Genesee Region. Baccalaureate to Master's programs only offset the decline by 25.
- Total enrollments for upper-division programs were down 1,834 from the previous year.
- Master's programs in Regions experienced an increase in enrollments Central (11), Mid-Hudson (288), Long Island (93).
- Four regions experienced considerable declines in Master's enrollments from the previous year: Western (28), Genesee (12), Northeast (59), Metropolitan (346).
- Total enrollments for master's programs were decreased 53 from the previous year.
- Doctoral enrollment decline 10 from the previous year.

- (a) Two RN/BS/MS programs admitted initial class in Fall 1984.
- (b) Excludes data from the generic master's program.

#170 Student Characteristic

TABLE 21

GRADUATIONS FROM DEGREE PROGRAMS FOR REGISTERED PROFESSIONAL NURSES
BY TYPE OF PROGRAM AND REGENTS PLANNING REGION

NEW YORK STATE
AUGUST 1, 1983 TO JULY 31, 1984

Region	Degree Programs for RNs								Total	
	Baccalaureate for RNs		Baccalaureate to Master's ^a		Master's ^b		Doctoral			
	Graduations	%	Graduations	%	Graduations	%	Graduations	%	Graduations	%
Western	22	1.8%	--	--	109	9.0%	--	--	131	10.9%
Genesee	19	1.6	--	--	39	3.2	4	0.3%	62	5.1
Central	--	--	--	--	41	3.4	--	--	41	3.4
Northern	--	--	--	--	--	--	--	--	--	--
Northeast	170	14.1	--	--	33	2.7	--	--	203	15.8
Mid-Hudson	124	10.3	--	--	32	2.7	--	--	156	12.9
Metropolitan	127	10.5	--	--	375	31.1	33	2.7	535	44.4
Long Island	35	2.9	--	--	42	3.5	--	--	77	6.4
Total	497	41.2%	--	--	671	55.7%	37	3.0%	1,205	100.0%

- Graduations were decreased from the previous year for upper-division baccalaureate programs in all Regions: Western (103), Genesee (19), Central (37), Northeast (116), Mid-Hudson (70), Metropolitan (128), Long Island (145).
- Total graduations declined by 618 from the previous year from upper division RN programs.
- Graduations from masters programs declined in all Regions except the Western, Mid-Hudson and Metropolitan which experienced increases from the previous year of 62, 32 and 41, respectively.
- Five Regions experienced declines in master's graduations from the previous year as follows: Genesee (18), Central (9), Northeast (4), and Long Island (1).
- Graduations from doctoral programs increased by 17 over the previous year.

- (a) Two RN/BS/MS programs admitted initial class in Fall 1984.
- (b) Excludes data from the generic master's program.

#170 Student Characteristic

TABLE 22
 MASTER'S ENROLLMENT AND DEGREES CONFERRED BY CLINICAL MAJOR
 AND TYPE OF PROGRAM
 NEW YORK STATE
 1983-84

Clinical Major	Type of Program					
	Baccalaureate to Master's			Master's		
	Enrollment ^a		Degrees Conferred ^b	Enrollment ^a		Degrees Conferred ^b
	Full-time	Part-time		Full-time	Part-time	
Medical-Surgical Nursing (Adult Health)	--	--	--	91	635	194
Maternal-Child Nursing	--	--	--	66	283	55
Community Nursing (Public Health)	--	--	--	31	183	20
Psychiatric Mental Health Nursing	--	--	--	40	232	41
Geriatric Nursing	--	--	--	31	59	17
Other	16	--	--	256	1,128	349
Total	16	--	--	515	2,520	676

(a) As of October 15, 1984.

(b) Between August 1, 1983 and July 31, 1984.

#170 Student Characteristic

TABLE 23
DOCTORAL ENROLLMENT AND GRADUATIONS
BY TYPE OF NURSING DEGREES CONFERRED
NEW YORK STATE
1983-84

Type of Nursing Degree Conferred	Enrollment ^a		Graduations ^b
	Full-time	Part-time	
Ph.D.	37	193	24
Ed.D.	69	64	13
Total	106	257	37

(a) As of October 15, 1984.

(b) Between August 1, 1983 and July 31, 1984.

#170 Student Characteristic

TABLE 25
NEW STUDENTS ADMITTED BY RACIAL/ETHNIC ORIGIN^a AND TYPE OF PROGRAM
NEW YORK STATE
AUGUST 1, 1983 to JULY 31, 1984

Type of Program	Racial/Ethnic Origin						Total
	Black, Non-Hispanic	American Indian or Alaskan Native	Asian or Pacific Islander	Hispanic	White, Non-Hispanic	Unknown	
Diploma	51	--	7	21	976	--	1,055
Associate	855	13	93	156	3,513	1,756	6,386
Baccalaureate	245	3	24	72	2,158	799	3,301
Generic Master's	3	1	--	1	99	--	104
Baccalaureate for RNs	207	2	21	38	511	233	992
Baccalaureate to Master's ^b	--	--	--	--	--	--	--
Graduate ^c	34	2	20	28	909	79	1,072
Supplemental Clinical	4	1	1	--	48	--	54
Secondary Practical Nurse	348	8	22	140	1,242	11	1,771
Adult Practical Nurse	596	7	12	66	2,101	18	2,800
Total	2,343	37	200	522	11,557	2,896	17,535

(a) Estimated data as some institutions unable to report.

(b) There were no admissions to these programs during this time period.

(c) Includes both master's and doctoral program data.

#170 Student Characteristic

TABLE 27
GRADUATIONS BY RACIAL/ETHNIC ORIGIN^a OF STUDENT AND TYPE OF PROGRAM
NEW YORK STATE
AUGUST 1, 1983 TO JULY 31, 1984

Type of Program	Racial/Ethnic Origin						Total
	Black, Non- Hispanic	American Indian or Alaskan Native	Asian or Pacific Islander	Hispanic	White, Non- Hispanic	Unknown	
Diploma	18	—	2	11	644	52	727
Associate	383	14	29	77	2,516	581	3,600
Baccalaureate	321	1	27	58	1,844	406	2,657
Generic Master's	—	—	—	—	90	—	90
Baccalaureate for RNs	76	1	3	7	361	49	497
Baccalaureate to Master's ^b	—	—	—	—	—	—	—
Graduate ^c	16	3	14	4	441	70	548
Supplemental Clinical	2	—	—	—	47	—	49
Secondary Practical Nurse	128	3	7	47	552	9	746
Adult Practical Nurse	406	9	9	28	1,615	—	2,067
Total	1,350	31	91	232	3,110	1,167	10,981

(a) Estimated data as some institutions unable to report.

(b) New programs, no graduations during this time period.

(c) Includes both master's and doctoral program data.

#170 Student Characteristic

33
TABLE 33

SELECTED STATISTICS OF GENERIC PROFESSIONAL NURSING PROGRAMS
OF REGENTS PLANNING REGION, INSTITUTION AND TYPE OF PROGRAM
NEW YORK STATE, 1983-84

INSTITUTION NAME	TYPE OF PROGRAM	APPLICATIONS RECEIVED	ADMISSIONS	UNFILLED PLACES	UNABLE TO ACCEPT	ENROLLMENT FULL-TIME	ENROLLMENT PART-TIME	GRADUATIONS
** REGENTS PLANNING REGION: WESTERN								
ALFRED UNIVERSITY-MAIN	BACCALAUREATE	280	167	25	0	145	309	92
BUFFALO GENERAL HOSPITAL	DIPLOMA	290	81	29	0	178	0	54
D'YOUVILLE COLLEGE	BACCALAUREATE	456	261	0	0	598	70	175
ERIE COMM COLL - NORTH	ASSOCIATE	220	120	0	103	93	125	99
JANESTOWN COMM COLL	ASSOCIATE	284	83	5	201	73	75	68
HILLARD FILLMORE HOSPITAL	DIPLOMA	170	61	4	0	148	0	39
NIAGARA COUNTY COMM COLL	ASSOCIATE	168	191	0	80	209	50	70
NIAGARA UNIVERSITY	BACCALAUREATE	0	132	0	0	385	37	114
SISTERS OF CHARITY HOSP	DIPLOMA	105	58	8	0	130	0	31
SUNY A & T ALFRED	ASSOCIATE	265	164	6	10	159	2	85
SUNY BUFFALO	BACCALAUREATE	170	114	30	57	197	93	125
TROGIRE COLLEGE	ASSOCIATE	401	225	0	5	185	277	150
** Subtotal **		2356	1827 1659	197	456	2500	1033	1102

35
TABLE 35

SELECTED STATISTICS, DEGREE PROGRAMS FOR REGISTERED NURSES
OF REGENTS PLANNING REGION, INSTITUTION AND TYPE OF PROGRAM
NEW YORK STATE, 1983-84

INSTITUTION NAME	TYPE OF PROGRAM	APPLICATIONS RECEIVED	ADMISSIONS	UNFILLED PLACES	UNABLE TO ACCEPT	ENROLLMENT FULL-TIME	ENROLLMENT PART-TIME	GRADUATIONS
** REGENTS PLANNING REGION: WESTERN								
D'YOUVILLE COLLEGE	MASTER'S	70	56	30	0	10	36	0
DAEMEN COLLEGE	BACCALAUREATE FOR RN'S	63	32	50	0	16	68	22
SUNY BUFFALO	MASTER'S	160	99	70	0	81	200	106
** Subtotal **		293	187	150	0	107	354	131

#170 Student Characteristic

ADMISSION, ENROLLMENT AND GRADUATION DATA
FOR BACCALAUREATE PROGRAMS

ENROLLMENT AND GRADUATION DATA FOR
MASTER'S AND DOCTORAL PROGRAMS

REPRODUCED FROM:

National League for Nursing, Nursing Student Census with Policy Implications 1984 (New York: National League for Nursing, 1984, pp. 16, 17, 24, 25, 31, 35, 36, 42, 47, 48, 49, 51, 58, 60, 61).

Baccalaureate Programs

Admissions	p. 1
Enrollments	p. 2
Graduations	p. 4

Master's Programs

Enrollments	p. 6
Graduations	p. 7

Doctoral Programs

Enrollments	p. 10
Graduations	p. 10

#170 Student Characteristic

ADMISSIONS

Admissions to RN Programs: Twenty-Year Review

- For the third consecutive year, annual admissions* for all basic RN programs increased, reaching a new peak of 120,579.
- Baccalaureate admissions showed the most dramatic upswing since 1975-76, when they climbed by 3.9 percent.
- As in each previous year, admissions to associate degree programs continued their upward spiral, reaching this year's all-time high of 63,947.
- Diploma program admissions continued to increase, albeit at a lower rate. The current increase of 2.3 percent contrasts with the 5.8 percent average of the previous two years.
- Based on data for fall admissions, annual admissions for 1983-84 are expected to rise by 1.8 percent for all basic RN programs. This will be the fourth consecutive year that the annual admissions rate has increased, although the rate is predicted to be less than half that of the last three years, which averaged 4.4 percent. The percentage change projected for each basic RN program is as follows:

Baccalaureate	+ 3.0%
Associate Degree	+ 3.8%
Diploma	- 7.0%

*The number of annual admissions is defined as the number of students who appeared for class after the opening of the term, even if they subsequently dropped out. This only includes students who were admitted for the first time and does not include transfers or readmittees. For baccalaureate nursing programs, depending on their college policy, there will be variations in the class level when students are first counted as officially enrolled. These variations in recording admissions partially account for the sometimes divergent trends observed when comparing admissions with total enrollments.

Table 14
ANNUAL ADMISSIONS TO BASIC RN PROGRAMS AND PERCENTAGE OF CHANGE
FROM PREVIOUS YEAR, BY TYPE OF PROGRAM: 1963-64 TO 1982-83

ACADEMIC YEAR	ALL BASIC RN PROGRAMS		BACCALAUREATE PROGRAMS		ASSOCIATE DEGREE PROGRAMS		DIPLOMA PROGRAMS	
	Number of Admissions	Percent Change	Number of Admissions	Percent Change	Number of Admissions	Percent Change	Number of Admissions	Percent Change
1963-64	52,274	+6.2	10,242	+6.9	4,461	+27.8	37,571	+3.9
1964-65	57,180	+9.4	11,600	+15.2	5,144	+37.7	39,236	+4.4
1965-66	60,191	+5.3	13,103	+11.0	6,544	+39.1	38,544	-1.8
1966-67	58,021	-3.6	14,012	+6.9	11,127	+30.3	32,872	-14.7
1967-68	60,673	+4.6	14,813	+5.7	14,577	+30.9	31,283	-4.8
1968-69	63,408	+4.5	15,901	+7.3	18,536	+27.2	28,971	-7.4
1969-70	74,598	+17.6	18,942	+19.1	25,142	+35.6	30,514	+5.3
1970-71	78,524	+5.3	20,299	+7.7	29,433	+17.1	28,792	-5.6
1971-72	93,344	+18.9	27,228	+34.1	36,454	+23.8	29,662	+3.0
1972-73	103,789	+11.2	30,348	+11.5	43,733	+20.0	29,708	+0.1
1973-74	107,344	+3.4	32,461	+7.0	47,940	+9.6	26,943	-9.3
1974-75	109,020	+1.6	34,956	+7.7	49,368	+3.0	24,696	-8.3
1975-76	112,174	+2.9	36,320	+3.9	52,232	+5.8	23,622	-4.3
1976-77	112,523	+0.3	36,670	+1.0	53,610	+2.6	22,243	-5.8
1977-78	110,950	-1.4	37,348	+1.8	52,991	-1.1	20,611	-7.3
1978-79	107,476	-3.2	35,611	-4.7	53,366	+0.7	18,499	-10.2
1979-80	105,952	-1.4	35,414	-0.5	53,633	+0.5	16,905	-8.6
1980-81	110,201	+4.0	35,808	+1.1	56,899	+6.1	17,494	+3.5
1981-82	115,279	+4.6	35,928	+0.3	60,421	+6.1	18,928	+8.1
1982-83	120,579	+4.6	37,264	+3.7	63,947	+5.8	19,368	+2.3

#170 Student Characteristic

Table 15
ANNUAL ADMISSIONS TO PUBLIC AND PRIVATE BASIC RN PROGRAMS, BY TYPE OF PROGRAM: 1973-74 TO 1982-83

PUBLIC AND PRIVATE NURSING PROGRAMS	NUMBER OF ANNUAL ADMISSIONS									
	1973-74	1974-75	1975-76	1976-77	1977-78	1978-79	1979-80	1980-81	1981-82	1982-83
All Programs	107,244	109,308	112,174	112,823	116,990	107,478	105,082	110,291	110,279	120,578
Public	68,618	71,052	73,852	74,048	73,401	72,447	71,196	74,238	78,305	81,518
Private	38,626	37,956	38,322	38,775	37,849	35,029	34,756	35,323	36,974	39,061
Baccalaureate	37,461	34,956	36,376	36,678	37,348	35,611	35,414	35,818	35,978	37,764
Public	29,445	27,275	27,887	27,985	27,893	27,948	27,854	27,963	27,507	27,276
Private	7,916	7,751	8,318	8,765	8,455	7,663	7,560	7,845	8,471	10,488
Associate Degree	47,940	49,368	52,732	53,610	52,941	51,366	51,633	56,999	60,423	63,947
Public	43,610	44,987	47,692	48,313	47,644	48,178	47,583	50,260	53,780	55,473
Private	4,330	4,381	4,740	5,297	5,297	5,188	6,040	6,639	7,143	8,474
Diploma	26,943	24,696	23,627	22,243	26,611	18,499	16,904	17,494	18,928	19,368
Public	4,621	3,888	3,388	2,832	2,964	2,321	2,149	2,015	2,523	2,819
Private	22,322	20,808	20,239	19,411	23,647	16,178	14,756	15,479	16,405	16,549

ENROLLMENTS

Enrollments in RN Programs: Twenty-Year Review

- Total enrollments in all basic RN programs hit 250,553 in 1983 — an all-time high. This increase was primarily due to the rise in baccalaureate and associate degree enrollments.
- Baccalaureate enrollments rose sharply in 1983 (4.9%), the highest since 1975, while associate degree enrollments contributed to the rise, but at a lesser rate (4.1%) than in the previous two years.
- Diploma enrollments declined slightly in 1983 (-0.8%) similar to the nine years prior to 1982.

Table 21
ENROLLMENTS IN BASIC RN PROGRAMS AND PERCENTAGE CHANGE FROM PREVIOUS YEAR, BY TYPE OF PROGRAM: 1964 TO 1983

YEAR	ALL BASIC RN PROGRAMS		BACCALAUREATE PROGRAMS		ASSOCIATE DEGREE PROGRAMS		DIPLOMA PROGRAMS	
	Number of Enrollments	Percent Change	Number of Enrollments	Percent Change	Number of Enrollments	Percent Change	Number of Enrollments	Percent Change
1964	128,429	+3.6	27,608	+10.1	8,513	+33.9	92,308	-0.3
1965	134,733	+4.9	30,309	+9.8	11,513	+35.2	92,911	+0.6
1966	137,972	+2.4	32,966	+8.8	15,206	+32.1	89,800	-3.3
1967	140,631	+1.9	36,456	+10.6	20,660	+17.9	83,515	-7.0
1968	144,024	+2.4	40,157	+10.1	27,009	+30.7	76,858	-8.0
1969	149,124	+3.5	43,296	+7.8	33,917	+25.6	71,921	-6.4
1970	162,924	+9.2	48,657	+12.4	43,855	+29.3	70,412	-2.1
1971	185,869	+14.1	59,454	+22.2	55,425	+26.4	70,990	+0.8
1972	211,239	+13.6	73,499	+23.6	66,402	+19.8	71,338	+0.5
1973	230,803	+9.3	84,738	+15.3	77,508	+16.7	68,557	-3.9
1974	242,551	+5.1	94,413	+11.4	84,166	+8.6	63,972	-6.7
1975	248,171	+2.3	99,837	+5.7	88,121	+4.7	60,213	-5.9
1976	247,044	-0.4	99,949	+0.1	91,004	+3.3	56,091	-6.8
1977	245,390	-0.7	101,430	+1.5	91,102	+0.1	52,858	-5.8
1978	239,486	-2.4	99,900	-1.5	91,527	+0.5	48,058	-9.1
1979	234,659	-2.0	98,939	-1.0	92,069	+0.6	43,651	-12.2
1980	230,966	-1.6	95,858	-3.1	94,060	+2.2	41,048	-6.0
1981	234,995	+1.7	93,967	-2.0	100,019	+6.3	41,009	-0.1
1982	242,835	+3.0	94,363	+0.4	105,324	+5.3	42,348	+3.3
1983	250,553	+3.5	98,941	+4.9	109,603	+4.1	42,007	-0.8

#170 Student Characteristic

Generic and RN Enrollments in Baccalaureate Nursing Programs

- 1983 was a significant year for enrollments in baccalaureate nursing programs. The 137,792 total enrollments marked an increase of 8,667 from the previous year and was the highest percentage change (6.7%) recorded in recent years.
- When broken down by types of students, every category registered significant increases. The most dramatic increase was for RNs enrolled in BRN programs (+ 19.9%), followed by generic students (+ 4.9%) and RN students in generic programs (+ 1.2%).
- An interesting finding is that when data from 1979 are compared with 1984, total baccalaureate enrollments increased by 8.8 percent. When examined by categories, the changes were as follows:

RN students in BRN programs	+ 65.3%
RN students in generic programs	+ 28.8%
Generic students	+ 0.0%

Table 28
GENERIC AND RN STUDENT ENROLLMENTS IN BACCALAUREATE NURSING PROGRAMS:
1974 TO 1983

YEAR	ENROLLMENTS IN BACCALAUREATE NURSING PROGRAMS			
	Total Enrollments	Generic Programs		BRN* Programs
		Generic Students	RN Students	RN Students
1974	107,790	94,413	9,440	3,937
1975	115,553	99,837	10,653	5,063
1976	119,047	99,949	11,977	7,121
1977	124,578	101,430	14,032	9,116
1978	125,337	99,900	16,550	8,887
1979	126,612	98,939	16,987	10,686
1980	129,111	95,858	20,722	12,531
1981	126,981	93,967	19,650	13,264
1982	129,125	94,363	20,933	14,729
1983	137,792	98,941	21,192	17,659

* BRN programs are baccalaureate nursing programs that admit only RNs.

#170 Student Characteristic

GRADUATIONS

Graduations from RN Programs: Twenty-Year Review

- Graduations during 1982-83 registered a substantial increase of 4.5 percent over the previous academic year. This builds upon the slight increase of 0.1 percent for the previous year which, in turn, reversed a three-year decline in total graduations.
- The increase in the number of graduations from basic RN programs was primarily due to the surge of associate degree enrollments in 1981. These 1981 freshmen (who graduated two years later) were largely responsible for the increase in 1982-83 graduations.
- Because of the correlation between graduations and previous year's enrollments, the 0.9 percent drop for basic baccalaureate graduations in 1982-83 is largely the result of the decline in basic baccalaureate enrollments for the years 1978 through 1981. These declines will continue to be reflected in graduation data† for the next two years until the recent increases in baccalaureate enrollments (1982 and 1983) begin to reverse this pattern for graduation data three years from now.
- For the first time since 1974, there was a percentage gain in the number of diploma graduations. Although minimal (0.2%), it was a significant change from the total drop of nearly 20 percent for the preceding two years.

† The figures for basic baccalaureate programs do not include the 8,893 registered nurses who graduated from baccalaureate programs.

† Graduation data generally reflect numbers of enrollments from the previous two to four years, depending on the length of the program. Therefore, graduations in 1982-83 reflect enrollment data from 1978 to 1981, and present enrollments are a gauge for future graduations.

Table 31
GRADUATIONS FROM BASIC RN PROGRAMS AND PERCENTAGE CHANGE
FROM PREVIOUS YEAR, BY TYPE OF PROGRAM: 1963-64 TO 1982-83

ACADEMIC YEAR	ALL BASIC RN PROGRAMS		BACCALAUREATE PROGRAMS		ASSOCIATE DEGREE PROGRAMS		DIPLOMA PROGRAMS	
	Number of Graduations	Percent Change	Number of Graduations	Percent Change	Number of Graduations	Percent Change	Number of Graduations	Percent Change
1963-64	35,050	+8.8	5,053	+12.9	1,962	+32.7	28,035	+6.7
1964-65	34,497	-1.6	5,376	+6.4	2,510	+27.9	26,611	-5.1
1965-66	34,909	+1.2	5,488	+2.1	3,349	+33.4	26,072	-2.0
1966-67	37,931	+8.7	6,122	+11.5	4,639	+38.5	27,170	+4.2
1967-68	41,245	+8.7	7,132	+16.5	6,163	+32.8	27,950	+2.9
1968-69	41,801	+1.3	8,255	+17.1	8,578	+39.2	24,868	-11.0
1969-70	43,103	+3.1	9,069	+8.5	11,483	+33.9	22,551	-9.3
1970-71	46,455	+7.8	9,856	+8.7	14,534	+26.6	22,065	-2.2
1971-72	51,304	+10.4	10,968	+11.3	18,928	+30.2	21,410	-3.0
1972-73	58,881	+14.8	13,055	+19.0	24,497	+29.4	21,329	-0.4
1973-74	67,061	+13.9	16,957	+29.9	28,919	+18.0	21,185	-0.7
1974-75	73,915	+10.2	20,170	+18.9	32,183	+11.3	21,562	+1.8
1975-76	77,065	+4.3	22,579	+11.9	34,625	+7.6	19,861	-7.9
1976-77	77,755	+0.9	23,452	+3.9	35,289	+4.8	18,014	-9.3
1977-78	77,874	+0.1	24,187	+3.1	36,556	+0.7	17,131	-4.9
1978-79	77,132	-1.0	25,048	+3.6	36,264	-0.8	15,820	-7.2
1979-80	75,523	-2.1	24,994	-0.2	36,034	-0.6	14,495	-8.4
1980-81	73,985	-2.0	24,370	-2.5	35,712	-1.9	12,903	-11.0
1981-82	74,052	+0.1	24,081	-1.2	38,289	+4.3	11,682	-9.3
1982-83	77,408	+4.5	23,855	-0.9	41,849	+9.3	11,704	+0.2

#170 Student Characteristic

Baccalaureate Programs: Graduations of Generic Students and RNs

- The total number of graduations from baccalaureate programs totaled 32,748, representing a drop of 504 from last year (-1.5%).
- The largest drop was for BRN students, for whom the total 3,239 represented a 5.4 percent drop from the previous year. This was the first decline ever in the number of graduations in this group.
- This drop in the number of BRN graduations appears to be related to shifts in BRN enrollments in previous years caused by increases in the attrition rate for full-time BRN students who either dropped out altogether or changed their registration to part-time status. Presumably, economic pressures had forced these students to reduce their financial burdens by increasing their work schedules and reducing their course loads.
- The number of graduations of generic students dropped (-0.9%) for 1982-83. This was the fourth consecutive year in which a drop in generic student graduations had been registered.
- Since approximately 50 percent of the generic nursing programs are four years in length, the 2.1 percent decline recorded in 1979 for full-time generic enrollments was the main cause of this year's drop in the number of full-time generic baccalaureate graduations.
- The number of RNs graduating from generic programs also dropped in 1983 (-1.6%). This was the first time a dip had been registered since 1976-77, when there was a decrease of 11.1 percent.
- The drop in the number of RNs graduating from generic programs cannot be attributed to shifts to part-time status as was the case for BRN graduations. Instead it was due to the increased preference for programs designed exclusively for RNs (BRN programs) and the increased availability of those programs.
- For all types of baccalaureate students, this year's decrease in graduations can be expected to continue for another two years until 1985-86, when the impact of this year's dramatic increase in baccalaureate enrollments will become evident.

Table 38
BASIC AND RN STUDENT GRADUATIONS FROM BACCALAUREATE NURSING PROGRAMS:
1974 TO 1983

YEAR	GRADUATIONS FROM BACCALAUREATE NURSING PROGRAMS			
	Total Graduations	Generic Programs		BRN* Programs
		Basic Students	RN Students	RN Students
1973-74	19,927	16,957	2,518	452
1974-75	23,933	20,170	3,155	598
1975-76	27,316	22,579	3,374	1,363
1976-77	28,872	23,452	3,001	1,919
1977-78	30,309	24,187	3,774	2,348
1978-79	31,462	25,048	4,034	2,380
1979-80	32,312	24,954	4,477	2,841
1980-81	32,608	24,370	4,872	3,366
1981-82	33,252	24,081	5,748	3,423
1982-83	32,748	23,855	5,654	3,239

*BRN includes all the baccalaureate nursing programs that admit only RNs.

#170 Student Characteristic

Graduations from RN Programs

- In 1982-83 total graduations from basic RN programs increased for every region except the North Atlantic. Percentage changes were as follows:

South	+ 7.1%
Midwest	+ 6.5%
West	+ 3.0%
North Atlantic	+ 0.4%

- By type of program, only associate degree graduates showed increases for every region, the largest gain being in the South (+ 12.7%).

MASTER'S PROGRAMS IN NURSING

Master's Programs in Nursing and Enrollments

- The number of master's programs in departments of nursing registered a net increase of two (totaling 155); this net increase was the result of three new programs and one closing.
- The total number of students enrolled in nursing master's programs reached 18,112—the highest to date.
- The majority of students were enrolled on a part-time basis (64.2%), continuing the trend first observed in 1967, when the percentage of full-time graduate students declined and the percentage of part-time students increased.

Table 46
ENROLLMENTS OF NURSES IN MASTER'S PROGRAMS AND PERCENTAGE
IN NLN-ACCREDITED PROGRAMS: 1964 TO 1983

ACADEMIC YEAR	PROGRAMS		ENROLLMENTS					
	Number	Percent Accredited	Total		Full Time		Part Time	
			Number	Percent Accredited	Number	Percent Accredited	Number	Percent Accredited
1964	53	66.0	2,836	88.6	2,100	88.5	736	89.1
1965	56	71.4	3,123	90.7	2,358	92.1	765	86.5
1966	59	71.2	3,488	92.0	2,787	93.5	721	86.3
1967	51	75.4	3,531	91.8	2,752	94.1	779	83.3
1968	66	74.2	4,018	92.7	3,034	94.1	984	89.2
1969	70	71.4	4,443	89.4	3,346	91.8	1,097	81.8
1970	73	72.6	4,785	87.5	3,529	92.9	1,236	72.1
1971	79	72.2	5,405	89.3	3,925	93.3	1,480	79.6
1972	86	67.4	6,342	88.4	4,324	92.6	2,018	73.2
1973	86	74.4	6,786	89.0	4,159	95.0	2,627	79.6
1974	88	89.8	7,924	86.7	4,462	90.7	3,462	81.4
1975	99	69.0	9,662	90.6	5,402	93.4	4,260	87.1
1976	103	67.9	10,809	88.4	5,924	92.5	4,885	83.4
1977	112	66.4	12,143	86.8	6,112	92.5	6,031	81.0
1978	117	68.1	13,105	87.0	6,561	91.5	6,544	82.5
1979	125	72.4	14,130	87.8	6,891	91.8	7,239	83.9
1980	135	66.4	15,053	86.3	7,306	89.0	7,747	83.7
1981	140	65.5	16,125	85.2	7,000	87.3	9,125	83.6
1982	151	79.1	17,085	91.1	6,389	96.0	10,696	86.2
1983	154	77.5	18,112	87.6	6,478	89.8	11,634	86.3

The school shows the total number of programs reported its enrollment for 1977.

#170 Student Characteristic

Table 54
FULL-TIME ENROLLMENTS OF NURSES IN MASTER'S PROGRAMS,
BY CLINICAL SPECIALIZATION AND FUNCTIONAL AREA OF STUDY: FALL 1983

CLINICAL SPECIALIZATION	NUMBER OF FULL-TIME ENROLLMENTS BY FUNCTIONAL AREA OF STUDY						Total
	Administrative/Management		Teaching	Advanced Clinical Practice	Other	Not Specified	
	Service	Education					
Medical Surgical			282	1,748			2,123
Maternal child			62	700			956
Neurology			41	286			
Pediatrics			35	329			
Psychiatric mental health			185	689			775
Community Health	34		135	891			970
Other (oncology, functional skills, research, combined majors, rehabilitation)	707		111	811	78		1,507
None		43			8	98	147
TOTAL	741	43	673	4,689	86	98	5,479

Graduations from Master's Programs

- The total number of graduations from master's programs in nursing dropped by 2.1% in 1983, totaling 5,039.
- This drop involved two salient factors: (1) the decline in the absolute numbers of full-time students enrolled in both 1981 and 1982; (2) the increase in the number of part-time graduate nursing students, which prolongs the time needed to fulfill degree requirements and increases the attrition rate.
- Percentage changes in the graduation rate for each region were as follows:

West	+6.0%
North Atlantic	+2.3%
Midwest	-4.6%
South	-12.1%

Table 55

GRADUATIONS FROM MASTER'S PROGRAMS AND PERCENTAGE CHANGE FROM PREVIOUS YEAR, BY NLN REGION: 1963-64 TO 1982-83

ACADEMIC YEAR	ALL JURISDICTIONS OF THE UNITED STATES			NORTH ATLANTIC			MIDWESTERN			SOUTHERN			WESTERN		
	Number of Programs	Graduations		Number of Programs	Graduations		Number of Programs	Graduations		Number of Programs	Graduations		Number of Programs	Graduations	
		Number	Percent Change		Number	Percent Change		Number	Percent Change		Number	Percent Change		Number	Percent Change
1963-64	53	1,282	+11.8	18	583	-4.4	18	273	+37.9	9	120	+14.3	8	208	+28.7
1964-65	56	1,378	+7.8	19	615	+5.5	18	273	0.0	10†	179	+49.2	9	312	+2.0
1965-66	59	1,278	-7.3	19	594	-3.4	19	257	-5.9	12	156	-12.8	9	172	-12.8
1966-67	61	1,534	+19.9	19	658	+10.4	20	317	+23.3	12	187	+19.8	10	374	+37.5
1967-68	66	1,615	+5.3	20	662	+8.0	21	320	+0.9	14	247	+32.1	11	386	+3.2
1968-69	70	1,708	+9.3	20	680	+4.2	21	377	+17.8	15	279	+13.0	14	420	+8.8
1969-70	73	1,898	+12.8	21	857	+24.2	21	424	+12.5	16	311	+11.3	15	398	+7.7
1970-71	79	2,082	+4.7	23	787	-8.2	23	381	-7.8	18	383	+22.2	15	524	+32.3
1971-72	86	2,118	+1.7	24	725	-7.9	25	503	+28.8	21	388	-2.9	18	521	+6.8
1972-73	86	2,430	+14.7	21	818	+12.8	26	483	-4.0	23	552	+38.0	16	577	+16.7
1973-74	92	2,624	+8.0	21	911	+11.4	26	539	+11.6	24	602	+9.2	19	571	+1.0
1974-75	100	2,678	+2.1	24	885	+4.8	26	516	-4.3	29	642	+6.5	19	595	+1.0
1975-76	106	3,417	+27.8	26	1,188	+24.2	28	688	+23.3	33	854	+33.0	19	689	+21.8
1976-77	102	3,808	+11.2	24	1,284	+8.3	28	857	+24.8	33	1,027	+20.6	17	632	+8.3
1977-78	109	4,255	+12.0	26	1,573	+22.5	24	915	+6.8	37	1,145	+11.5	17	627	+1.6
1978-79	118	4,998	+18.0	27	1,620	+3.6	32	988	+7.8	41	1,307	+14.1	16	573	-8.2
1979-80	121	4,735	-5.3	29	1,565	-4.0	32	1,068	+8.3	41	1,333	+2.0	16	588	+2.2
1980-81	127	4,998	+5.1	30	1,472	-5.9	30	1,207	-13.0	46	1,510	+13.3	21	629	+9.5
1981-82	133	5,149	+3.0	32	1,520	+3.9	34	1,289	+6.9	48	1,463	+3.1	24	661	+10.2
1982-83	141	5,039	-2.1	34	1,565	+2.3	38	1,230	-4.6	45	1,225	-12.1	24	519	-16.0

† A temporary, non-academic program was included.

#170 Student Characteristic

Graduations from Master's Programs: Functional Area

- The majority of students who graduated from master's nursing programs specialized in advanced clinical practice (70.0%). This is a drop of 3.3 percent from the previous year and is the first time a decrease has been registered in this category.
- Students with a specialization in teaching constituted 16.4 percent of all master's graduates, an increase of 3.5 percent from the previous year.
- A slight decline (-0.9%) was recorded for students who graduated with a specialization in administration/management, they comprised 12.2 percent of all graduations for 1982-83.

Table 57

GRADUATIONS OF NURSES IN MASTER'S PROGRAMS, BY FUNCTIONAL AREA OF STUDY:
1973-74 TO 1982-83

YEAR	GRADUATIONS BY FUNCTIONAL AREA OF STUDY									
	TOTAL		TEACHING		ADMINISTRATION MANAGEMENT		ADVANCED CLINICAL PRACTICE		OTHER	
	Number	Percent	Number	Percent	Number	Percent	Number	Percent	Number	Percent
1973-74	2,643	100.0	864	32.7	280	9.9	1,504	56.9	15	0.5
1974-75	2,694	100.0	789	28.6	217	8.0	1,632	60.6	76	2.8
1975-76	3,437	100.0	895	26.0	309	9.0	2,916	84.7	217	6.3
1976-77	3,830	100.0	944	24.7	269	7.0	2,468	64.4	149	3.9
1977-78	4,271	100.0	974	22.8	416	9.7	2,675	62.7	206	4.8
1978-79	4,621	100.0	946	20.5	351	7.6	3,000	64.9	324	7.0
1979-80	4,778	100.0	794	16.6	392	8.2	3,342	70.0	250	5.2
1980-81	5,026	100.0	862	17.2	405	8.0	3,577	71.2	182	3.6
1981-82	5,193	100.0	670	12.9	690	13.3	3,806	73.3	27	0.5
1982-83	5,085	100.0	834	16.4	620	12.2	3,558	70.0	73	1.4

Table 58

GRADUATIONS OF NURSES FROM MASTER'S PROGRAMS, BY NURSING CONTENT AREA: 1973-1974 TO 1982-1983

ACADEMIC YEAR	GRADUATIONS BY NURSING CONTENT AREA											
	TOTAL		MEDICAL SURGICAL		MATERNAL CHILD		PSYCHIATRIC MENTAL HEALTH		COMMUNITY HEALTH		OTHER (ADVANCED CLINICAL PRACTICE, TEACHING, ADMINISTRATION OR NOT DESIGNATED)	
	Number	Percent of Total	Number	Percent of Total	Number	Percent of Total	Number	Percent of Total	Number	Percent of Total	Number	Percent of Total
1973-74	2,643	100.0	176	6.6	470	17.8	368	13.9	780	29.5	147	5.6
1974-75	2,694	100.0	811	30.1	487	18.1	551	20.5	319	11.8	286	10.6
1975-76	3,437	100.0	869	25.3	524	15.2	620	18.0	329	9.6	395	11.5
1976-77	3,830	100.0	1,007	26.3	579	15.1	678	17.7	384	10.0	382	10.0
1977-78	4,271	100.0	1,211	28.3	595	14.0	732	17.1	284	6.6	449	10.5
1978-79	4,621	100.0	1,647	35.6	756	16.4	726	15.7	526	11.4	611	13.2
1979-80	4,778	100.0	1,678	35.1	823	17.2	781	16.3	627	13.1	669	14.0
1980-81	5,026	100.0	1,743	34.7	842	16.8	731	14.5	655	13.0	865	17.2
1981-82	5,193	100.0	1,221	23.5	847	16.3	787	15.2	724	13.9	718	13.8
1982-83	5,085	100.0	1,144	22.5	826	16.3	673	13.2	577	11.3	765	15.0

#170 Student Characteristic

Graduations from Master's Programs: Clinical Specialization

- The breakdown of graduates from master's nursing programs in terms of clinical specialization is indicated below

Medical-surgical	33.5%
Maternal-child	16.2%
Community health	15.2%
Psychiatric-mental health	13.3%
Other (e.g., combined psychiatric-community health or administration of maternal-child programs)	21.8%

- For the past three years, small decreases in the numbers of graduations from master's programs have been noted for students specializing in medical-surgical nursing, maternal-child nursing and psychiatric-mental health nursing.

	<u>Percentage Change since 1980-81</u>
Medical-surgical	-2.2%
Maternal-child	-2.6%
Psychiatric-mental Health	-2.4%

- Since 1980-81, the number of master's graduates specializing in community health and in other specializations have registered steady increases:

	<u>Percentage Change since 1980-81</u>
Other specializations	+5.0%
Community health	+2.2%

- The notable increase for the number of master's graduates with "other" specialties is due primarily to the rise in the number of students selecting combined majors in administration and clinical practice.

#170 Student Characteristic

Table 42
ENROLLMENTS AND PERCENTAGE CHANGE FROM PREVIOUS YEAR
OF NURSES IN DOCTORAL PROGRAMS LOCATED IN NURSING EDUCATION DEPARTMENTS:
1964 TO 1983

ACADEMIC YEAR	NUMBER OF PROGRAMS	ENROLLMENTS					
		Total		Full time		Part time	
		Number	Percent Change	Number	Percent Change	Number	Percent Change
1964	4	157	7.1	85	54.1	72	45.9
1965	4	211	+34.4	94	44.5	117	55.5
1966	5	199	-10.4	89	47.1	100	52.9
1967	5	208	+10.6	105	50.2	104	49.8
1968	6	258	+23.4	103	39.9	155	60.1
1969	6	286	+10.9	170	58.4	116	40.6
1970	8	312	+9.1	120	38.5	192	61.5
1971	8	283	-6.1	151	51.5	142	48.5
1972	8	402	+37.2	180	44.8	222	55.2
1973	8	375	-6.7	161	42.9	214	57.1
1974	9	482	+28.5	192	39.8	290	60.2
1975	12	506	+5.0	199	39.0	307	60.7
1976	14	632	+24.9	278	44.0	354	56.0
1977	16	790	+25.6	294	37.2	496	67.8
1978	21	789	-0.1	358	45.4	431	54.6
1979	22	980	+24.2	504	51.4	476	48.6
1980	22	1,019	+4.0	603	59.2	416	40.8
1981	23	1,163	+14.1	625	53.7	538	46.3
1982	25	1,342	+15.4	655	48.8	687	51.2
1983	27	1,495	+11.4	685	45.8	810	54.2

Table 43
ENROLLMENTS OF REGISTERED NURSES IN DOCTORAL PROGRAMS LOCATED IN
NURSING EDUCATION DEPARTMENTS: 1974 TO 1983

REGION	NUMBER OF ENROLLMENTS									
	1974	1975	1976	1977	1978	1979	1980	1981	1982	1983
United States	482	886	632	799	789	980	1,019	1,163	1,342	1,495
North Atlantic	407	394	404	545	441	524	452	450	518	576
Midwest	2	25	51	80	127	170	209	251	275	278
South	46	59	85	120	145	172	212	271	329	409
West	27	28	32	45	76	114	146	191	220	232

Table 44
GRADUATIONS OF REGISTERED NURSES FROM DOCTORAL PROGRAMS LOCATED IN
NURSING EDUCATION DEPARTMENTS: 1973-74 TO 1982-83

REGION	NUMBER OF GRADUATIONS									
	1973-74	1974-75	1975-76	1976-77	1977-78	1978-79	1979-80	1980-81	1981-82	1982-83
United States	68	74	62	59	53	101	125	121	137	138
North Atlantic	47	65	58	44	36	69	85	62	59	45
Midwest	0	0	0	0	5	6	13	22	17	33
South	0	3	2	7	7	17	19	21	23	36
West	3	5	2	8	5	9	8	14	18	24

#170 Student Characteristic

STATE UNIVERSITY OF NEW YORK AT BUFFALO SCHOOL OF NURSING

Minority Representation in Nursing

The 1980 national survey of registered nurses conducted under the auspices of the Bureau of Health Professions of the U.S. Department of Health and Human Services indicated that 1,662,382 nurses held a license to practice in the United States (ANA, 1985). Of these, 1,272,900 were actually employed in nursing. By 1982, the number of active nurses increased to 1,357,300, a 6.6% increment. If the Division of Nursing estimates of a 3% annual increment continue to hold true, the total number of employed nurses may be nearing one and one-half million. When one considers that, as recently as 1970, the number of active registered nurses was only 750,000, the increase has been dramatic.

However, when nursing manpower is examined in terms of racial/ethnic composition, some important facts are notable. Although, in 1980, minorities constituted more than 13% of the total U.S. population, the proportion of non-white registered nurses was only 7.2% - 3.7% Black, 2.0% Asian, 1.3% Hispanic and 0.3% American Indian/Alaskan Native (ANA, 1985).

Data on minority enrollments in nursing programs provides some evidence as to whether the 1980 percentage is increasing. This information has been systematically collected by the National League for Nursing since 1975 at three year intervals. Table 1 indicates that while actual numbers of minority students admitted to nursing programs have increased since 1978, the percentage of minority admissions relative to total admissions has declined from 13.4% in 1981 to 11.8% in 1984 (Vaughn, 1982; NLN, 1986).

#170 Student Characteristic

Table 1

Minority Students Admitted to Nursing Programs
in the United States: 1975, 1978, 1981 and 1984

Year	Blacks		Hispanics		Am. Indian/Oriental		Total	
	Number	Percent	Number	Percent	Number	Percent	Number	Percent
1975	8159	9.1	2080	2.3	1083	1.2	11,322	12.6
1978	7313	7.2	2520	2.5	1379	1.4	11,212	11.0
1981	8537	8.3	3515	3.4	1747	1.7	13,799	13.4
1984*	9226	7.4	2877	2.3	2544	2.0	14,647	11.8

Source: John C. Vaughn. "Educational Preparation for Nursing, 1981"
Nursing and Health Care 3 (October 1982) 454-455.

*1984 data from National League for Nursing, Nursing Student Census with Policy Implications, New York, to be published in April 1986.

The actual numbers of minority graduations have also shown increments but relative to the total numbers of graduations, there has been no gain. In 1975, as shown in Table 2, minorities represented 8.4% of the total graduations from nursing programs; in 1984, the percentage was 8.3%.

Table 2

Minority Students Graduated from Nursing Programs
in the United States: 1975, 1978, 1981 and 1984

Year	Blacks		Hispanics		Am. Indian/Oriental		Total	
	Number	Percent	Number	Percent	Number	Percent	Number	Percent
1975	3527	5.7	1147	1.8	596	1.0	5270	8.4
1978	3279	4.7	1558	2.2	887	1.3	5724	8.1
1981	3571	5.1	1568	2.3	379	1.3	6018	8.7
1984*	3822	4.7	1511	1.8	1411	1.7	6744	8.3

Source: John C. Vaughn "Educational Preparation for Nursing, 1981"
Nursing and Health Care 3 (October 1982) 454-455.

*1984 data from National League for Nursing, Nursing Student Census with Policy Implications, New York, to be published in April 1986.

#170 Student Characteristic

When one examines the data relative to minority representation in baccalaureate nursing programs, an uneven picture emerges. Table 3 indicates that, in 1981, minorities constituted 16.5% of the total number of baccalaureate admissions, a 4.2% increase over 1978. However, in 1984, the percentage decreased to 13.9%.

Table 3

Minority Students Admitted to Baccalaureate Nursing Programs
in the United States: 1975, 1978, 1981 and 1984

Year	Blacks		Hispanics		Am. Indian/Oriental		Total	
	Number	Percent	Number	Percent	Number	Percent	Number	Percent
1975	3650	12.4	807	2.7	454	1.5	4911	16.6
1978	2905	8.2	970	2.7	491	1.4	4366	12.3
1981	2797	8.6	1813	5.6	780	2.4	5390	16.5
1984*	3521	8.9	893	2.2	1070	2.7	5484	13.9

Source: John C. Vaughn "Educational Preparation for Nursing, 1981"
Nursing and Health Care 3 (October 1982) 454-455.

*1984 data from National League for Nursing, Nursing Student Census with Policy Implications, New York, to be published in April 1986.

One finds a somewhat more favorable picture relative to minority graduations from baccalaureate programs. As shown in Table 4, the percent of graduations has risen from 7.2% in 1979 to 11.0% in 1984.

Table 4

Minority Students Graduated from Baccalaureate Nursing Programs
in the United States: 1975, 1978, 1981 and 1984

Year	Blacks		Hispanics		Am. Indian/Oriental		Total	
	Number	Percent	Number	Percent	Number	Percent	Number	Percent
1975	1053	6.0	360	2.0	260	1.5	1673	9.4
1978	992	4.3	405	1.7	301	1.3	1698	7.2
1981	1079	4.8	782	3.4	373	1.6	2234	9.8
1984*	1488	6.2	422	1.7	709	2.9	2619	11.0

Source: John C. Vaughn "Educational Preparation for Nursing, 1981",
Nursing and Health Care 3 (October 1982) 454-455.

*1984 data from National League for Nursing, Nursing Student Census with Policy Implications, New York, to be published in April 1986.

#170 Student Characteristic

Let this finding be interpreted too optimistically, it should be noted that the number of minority baccalaureate admissions still far exceeds graduations indicating that problems with retention persist. As can be seen in Table 5, in each year surveyed the total number of minority admissions to baccalaureate programs was more than double the number of minority graduations.

Table 5

Number of Minority and Non-Minority Admissions and Graduations from Baccalaureate Nursing Programs in the United States and Percent of Graduations Relative to Admissions: 1975, 1978, 1981 and 1984

Year	Minority			Non-Minority		
	Admissions	Graduations	Percent Graduated	Admissions	Graduations	Percent Graduated
1975	4911	1673	34.1	24,568	15,993	65.1
1978	4366	1698	38.9	31,076	21,589	69.5
1981	5390	2234	41.4	27,158	20,440	75.3
1984*	5484	2619	47.8	33,916	21,099	62.2

Source: John C. Vaughn, "Educational Preparation, 1981", Nursing and Health Care 3 (October 1982) 454-455.

*1984 data from National League for Nursing, Nursing Student Census with Policy Implications, New York, to be published in April 1986.

The disparity between admission and graduation figures is much greater for minority than for non-minority baccalaureate students. For example in 1984, the percentage of graduations of minority students from baccalaureate programs relative to admissions was only 47.8% whereas the same statistic for non-minority students was 62.2%. The difference between the two groups, however, appears to be narrowing.

The underrepresentation of minority nurses in general and of minority baccalaureate nurses in particular is especially unfortunate since minority nurses have characteristics that make them very effective health care providers. For example, they have higher labor force participation rates than non-minority nurses (Sian, 1975). Also, black nurses are more willing to work in inner city areas than white nurses, (DDHS, 1982). Nurses who already live in underserved areas such as inner cities are more likely to remain than those who are attracted for a limited period of service (Feldbaum, 1980). For these reasons, it is not surprising that the Institute of Medicine Study, Nursing and Nursing Education: Public Policies and Private Actions (1983) notes that increasing educational opportunities for minority nurses is a very sound investment.

#170 Student
CHARACTERISTIC

STATE UNIVERSITY OF NEW YORK AT BUFFALO
SCHOOL OF NURSING

REFERENCES

American Nurses' Association, Facts About Nursing 84-85. Kansas City, Missouri: The Association, 1985.

Department of Health and Human Services, Health Resources Administration. The Registered Nurse Population, an Overview. From National Sample Survey of Registered Nurses. November 1980. (Report No. 82-5, revised June 1982).

Feldbaum, E.G. Registered Nurses at Work. A Report to Administrators of Health Facilities. College Park, Maryland: Bureau of Governmental Research, University of Maryland, 1980, p. 32.

Institute of Medicine, Division of Health Care Services. Nursing and Nursing Education: Public Policies and Private Actions. Washington, D.C.: National Academy Press, 1983. pp. 79, 164-168.

National League for Nursing. Nursing Position Statement on Nursing's Responsibility to Minorities and Disadvantaged Groups. New York: The League, 1979.

Slan, F.A. The Geographic Distribution of Nurses and Public Policy. (DHEW Publication No. HRA-75-53). Washington, D.C.: U.S. Government Printing Office, 1975, pp. 150-155.

Vaughn, J.C. "Educational Preparation for Nursing - 1981," Nursing and Health Care 3 (October 1982): 447-455.

UNIVERSITY AT BUFFALO
STATE UNIVERSITY OF NEW YORK
SCHOOL OF NURSING

Evaluation of Faculty Retreat

1. Structure of retreat was acceptable.-----
2. The Faculty retreat was productive.-----
3. The goals for the school as identified by the faculty through the Delphi technique are acceptable.-----
4. The strategies as identified by groups are acceptable.-----
5. Our sense of "mission" is clear.-----
6. There is a need for additional sessions to address these topics further.-----

Agree			Disagree		
1	2	3	4	5	6

Yes No

If yes, which topics need to be discussed in additional sessions:

#170 Student

CHARACTERISTIC

PAST AND CURRENT GRADUATE CHARACTERISTICS

#170 Student Characteristic

