

State University of New York College at Buffalo - Buffalo State University

Digital Commons at Buffalo State

Pamphlets

Pilgrim Missionary Baptist Church

1-1-1989

1989; Pamphlet; Queen Contestants

Pilgrim Missionary Baptist Church

Follow this and additional works at: <https://digitalcommons.buffalostate.edu/pilgrim-pamphlets>



Part of the [Cultural History Commons](#), [Historic Preservation and Conservation Commons](#), [Religion Commons](#), [Social History Commons](#), [Urban, Community and Regional Planning Commons](#), and the [Urban Studies and Planning Commons](#)

Recommended Citation

"1989; Pamphlet; Queen Contestants." Pamphlets. Pilgrim Missionary Baptist Church Collection. Monroe Fordham Regional History Center, Archives & Special Collections Department, E. H. Butler Library, SUNY Buffalo State.

<https://digitalcommons.buffalostate.edu/pilgrim-pamphlets/82>

This Book is brought to you for free and open access by the Pilgrim Missionary Baptist Church at Digital Commons at Buffalo State. It has been accepted for inclusion in Pamphlets by an authorized administrator of Digital Commons at Buffalo State. For more information, please contact digitalcommons@buffalostate.edu.

~*~

QUEEN CONTESTANTS

~*~

1989

SIS. DOROTHY GATES

SIS. SHEILA HOLLOWAY

SIS. GRACIE STEWART

*

OUR ACTIVITIES

*

STAY-AT-HOME TEA

BOWL-A-THON

PATRONS

QUEEN CONTEST

DINNER and FASHION SHOW

Thank You!

It is with heartfelt gratitude I express my sincere thanks for your actions and co-operation in helping to make this Women's Day program a very memorial occasion. A special thanks to the chairman and co-chairman of the committees.

I further extend a deep appreciation to the members of the Pilgrim Baptist Church for their faithfulness in this endeavor.

May I wish you God's speed, as you begin the next years of Christian service.

**Prayerfully,
Vidas McCoy
Chairperson**

Committees

Chairperson	Sis. Vidas McCoy
Co-Chairperson	Sis. Aurelia Tinch
Secretary	Sis. Gladys Barr
Program	Sis. Minnie Bester
Assistants	Sis. Norma Jackson Sis. Gladys Brown
Advisor	Sis. Beatrice Holloway
Finance	Sis. Almeata Beavers, Chairperson Sis. Naomi Nelson Sis. Renita Chatman

“Captains”

Leader	Sis. Avery Keys
Sis. Jean Alexander	Sis. Eula Boyd
Sis. Artelia Chambers	Sis. Mary Marrow
Sis. Margaret Eison	Sis. Jimmy Green
Sis. Louise Hines	Sis. Betty Oliver
Sis. Lillian Walker	Sis. Edna Webster
Sis. Goldie Wheeler	Sis. Anne Wilson
Sis. Lee Wyatt	(Youth) Sis. Tyrenza Swink

Ways & Means Committee

Sis. Gwen Hull	Chairperson
Sis. Gladys Brown	
Sis. Jimmie Green	
Videotaped by	Natheer Hasan, Sr.

Afternoon Program

Banquet	Aurelia Tinch, Chairperson — Sis. Clara Wood
Sis. Henrietta Davis	
Fashion Show	Sis. Beatrice Holloway

— COMMITTEE —

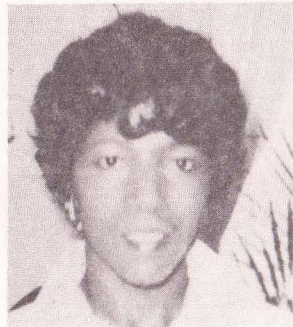
Chairperson	Sis. Aurelia Tinch
Co-Chairperson	Sis. Gwendolyn Hull
Secretary	Sis. Charmette Miller
Chaplain	Sis. Eula Boyd
Advisor	Sis. Beatrice Holloway
Publicity	Sis. Freddie Staples
Program Chairperson	Sis. Mary Morrow Sis. Renita Chatman Sis. Wanda Johnson Sis. Gaynell Smith
Finance Chairperson	Sis. Almeta Beavers Sis. Renita Chatman Sis. Naomi Nelson Sis. Shirley Pratcher
Ways & Means	“The Rainbow Eight”
Captain of Captains	Sis. Grace Knox
Captains	Sis. Eula Boyd Sis. Henrietta Davis Sis. Gertie Grahams Sis. Jimmie Green Sis. Venora Green Sis. Tanisha Harris Sis. Louise Hines Sis. Renee Horne Sis. Nellie Kenner Sis. Avery Key Sis. Shirley Quince Sis. Tyrenza Swink Sis. Leola Thomas Sis. Clara Wood Sis. Lee Wyatt
“The Rainbow Eight”	Sis. Freddie Staples Sis. Fran Pearson Sis. Martha Swink Sis. Bonita Nixon Sis. Katherine Kirkland Sis. Vidis McCoy Sis. Gwendolyn Hull Sis. Aurelia Tinch

KEYNOTE SPEAKER



Earline Collier

— WOMEN'S DAY QUEEN 1989 —



*Many Thanks to all of you
for your fine support in my
endeavors last year.
It has been an honor and a
pleasure to serve as
Women's Day Queen.
Again, Thank You.*

— Dorothy Gates

**— OUR CHAIRPERSON —
"Special Thanks"**

Thanks to God for this magnificent opportunity for service. The cooperation I received from you I hold dear in my heart. I would like to give honor to our Pastor for confidence and leadership, his wife for loyalty and fellowship.

Many thanks to my co-chairperson and all the Women of Pilgrim for their support and cooperation.

I would like to thank my committees who worked so diligently. Thanks to your families and friends who have been so supportive and cooperative.

We have a new attitude for the first year of the last decade in our pursuit of excellence, in our Christian endeavor.

Aurelia C. Tinch
Chairperson

• HONORARY CHAIRPERSONS •

- Sis. Vidis McCoy Women's Day 1989
- Dea. Robert Staples Men's Day 1990

— ORDER OF WORSHIP —

MUSICIANS

Bro. George Davis • Bro. Paul Echols

DEVOTIONAL LEADERS

Sis. Grace Knox • Sis. Goldie Wheeler • Sis. Betty Adams

MISTRESS OF CEREMONIES

Sis. Machel Smith



Call to Worship

Processional Participants & Choir

Congregational Hymn

No. 211 "Leaning on the Everlasting Arms"

Responsive Reading Sis. Deborah Watkins

Prayer Sis. Bonita Nixon

Selection Choir

Benevolent Offertory Sis. Savilla Crosby

Greetings & Recognition of Visitors Sis. Lucy Reed

Selection Choir

Reading Sis. Barbara Dismond

Offertory Sis. Wanda Johnson

Sis. Renee Horne

Sis. Alicia Webster

Sis. Lucy Chatman

Sis. Nellie Kenner

Special Music Women's Day Choir

Introduction of Speaker Sis. Evelyn Jones

Solo Sis. Marsha Davidson

Keynote Speaker Sis. Earline Collier

Peoples Community United Church of Christ

Rev. Landon McCall, Pastor

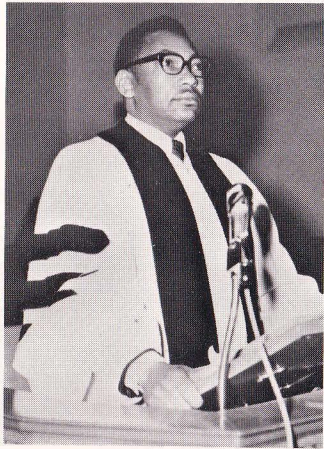
Selection Choir

Invitation to Discipleship Pastor R. D. Holloway

Expressions Sis. Aurelia Tinch

Remarks

Benediction Rev. R. D. Holloway



Photos by Pierce

CONGRATULATIONS BEA & HOLLOWAY

For The Twenty-five years
of service at
**Pilgrim Missionary
Baptist Church**

**YOUR MOM AND SISTER
“Sis” & Mary Ruth Street**