

1980S SATANIC PANIC KENMORE, NEW YORK

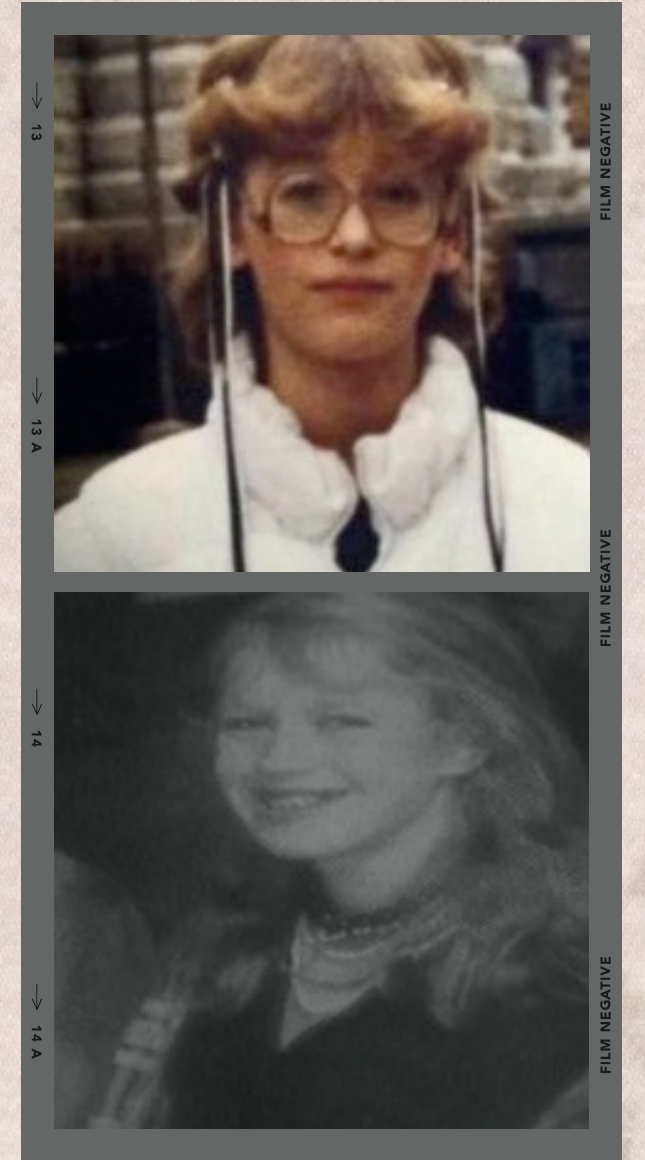


SNAKELAND: INDUSTRIAL PLAYGROUND OR SATANIC SITE?

The Eastern State Farmer Exchange Feed Mill, once a thriving grain mill in Tonawanda, New York, was decommissioned in the 1960s following deindustrialization. The mill became a local hangout spot for youths, who in the 1980s dubbed it "Snakeland." After a series of accidents, suicides, and strange occurrences, Snakeland earned the reputation as a hub for Satanic activity. These claims were often used to stigmatize marginalized groups and justify moral crusades against teenage deviance. Snakeland was a place of dark legends that was used as a rite of passage to the local teenagers. It was a spot where youths could socialize, create art, and engage in mostly harmless mischief, making it their own in the process. The Satanic Panic of the 1980s made places like Snakeland, cult epicenters. Despite allegations of Satanic activity, the truth behind Snakeland's reputation remains ambiguous. Rather than being hubs of occult rituals, they likely served as industrial playgrounds during the "go out and play" era.

2 MURDERED:

NO SUSPECTS



Top: Michelle Kasperek
Bottom: Katherine Herold

Police investigate potential link between murders of Michelle Kasperek, 13, and Katherine Herold, 15, who were found dead in similar circumstances in May 1984 and July 1985, respectively. Buffalo and Tonawanda detectives have interviewed some of the same youths and are considering the possibility of the same killer or killers. No suspects have been convicted as of 2024.

IF YOU HAVE ANY INFORMATION CALL:
CRIME STOPPERS WNY: (716) 867-6161

**SATANIC PANIC
GRIPS KENMORE, NY:**

**RESIDENTS FEAR
CULT INFLUENCE**



FOR MORE INFORMATION: SPEAK TO EMILY JARNOT