

State University of New York College at Buffalo - Buffalo State University

Digital Commons at Buffalo State

Elms, Student Yearbooks

Buffalo State Archives: History of the Institution

1-5-1956

The Elms 1956

Buffalo State College

Follow this and additional works at: <https://digitalcommons.buffalostate.edu/theelms>



Part of the [History Commons](#)

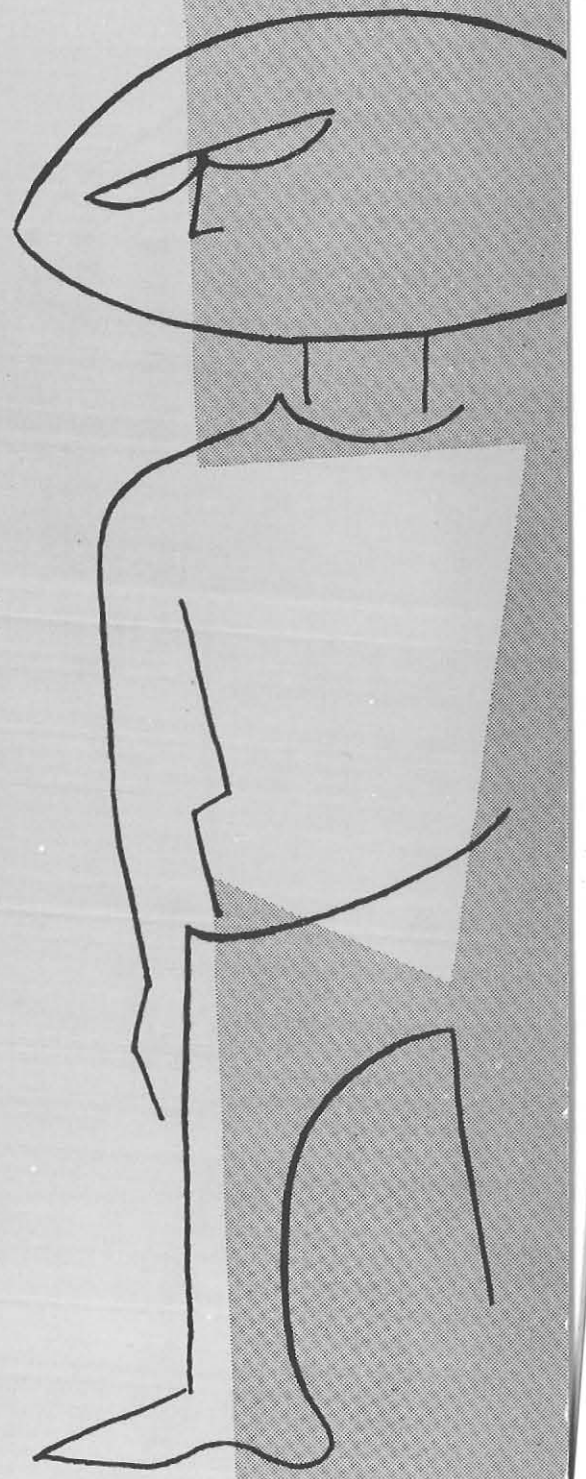
Recommended Citation

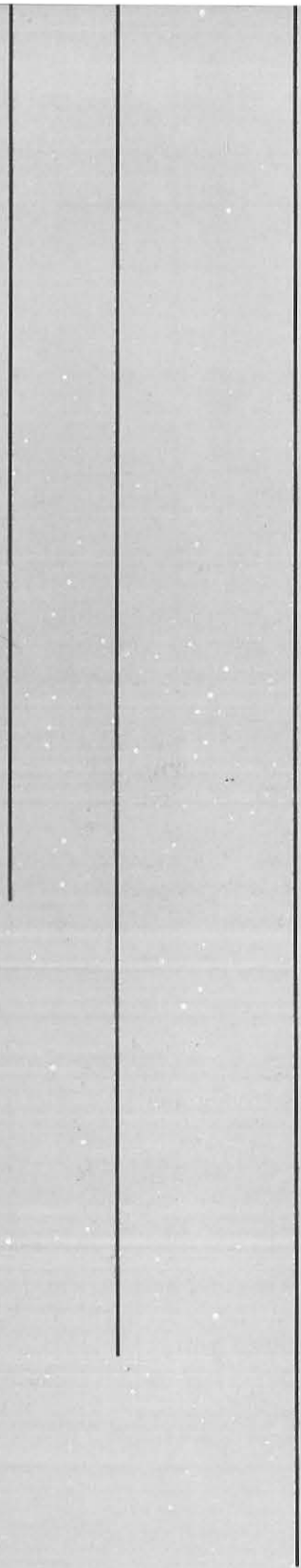
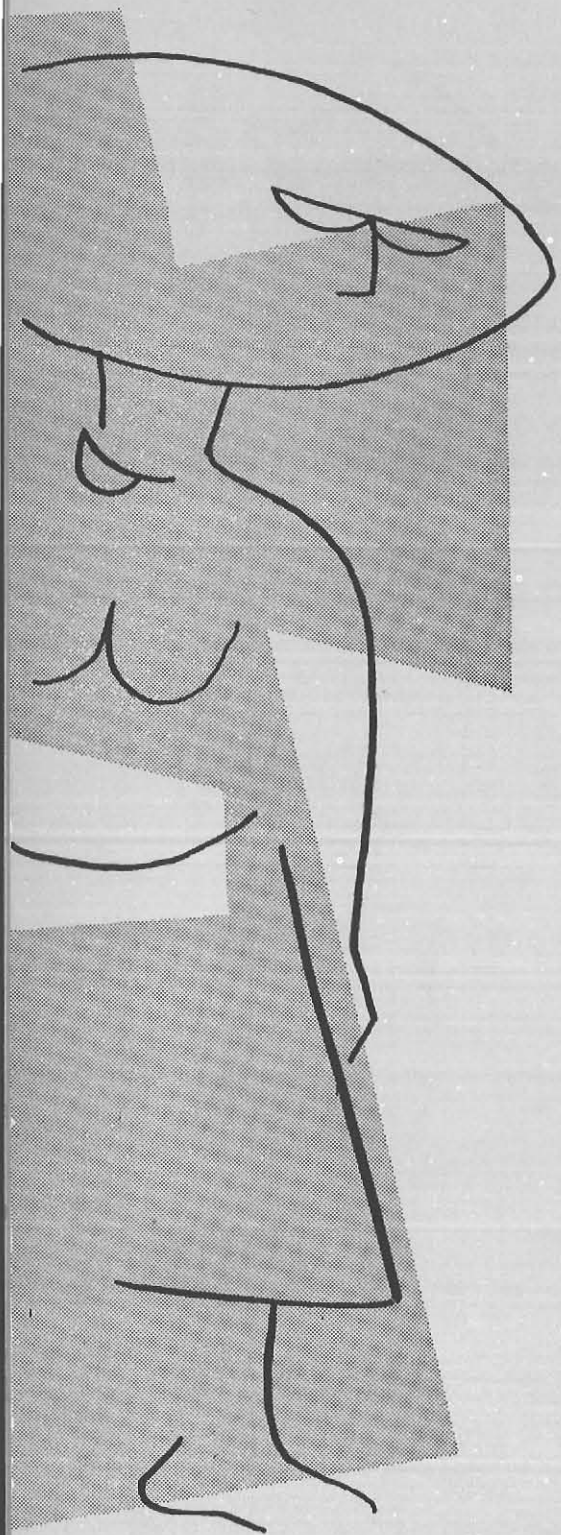
Buffalo State College, "The Elms 1956" (1956). *Elms, Student Yearbooks*. 45.
<https://digitalcommons.buffalostate.edu/theelms/45>

This Book is brought to you for free and open access by the Buffalo State Archives: History of the Institution at Digital Commons at Buffalo State. It has been accepted for inclusion in Elms, Student Yearbooks by an authorized administrator of Digital Commons at Buffalo State. For more information, please contact digitalcommons@buffalostate.edu.

ELMS

fifty-six





This is your ELMS . . . this is the story of '56 at State . . . A story can be told in many varied ways, we've tried to tell a story about you . . . the student at State.

Where else could we begin but with coffee in the snack bar, pinochle in the game room, free hours in the lounge, Friday evening dances and wherever we found you having fun.

We then looked for you in the classroom, listening and learning . . . meaningful experiences, problem areas, form follows function, camshafts and mechanical . . . or in the library with a difficult paper.

If we didn't find you in the snack bar or the classroom, we were sure to find you at a meeting . . . integration in governmental organization, drama, music, sports, publications, the committee on committees . . . if only we didn't have classes.

Next follows the administration, without whom most of our story wouldn't be possible . . . increased student freedom, students helping to decide about curriculum . . . a wonderful philosophy of administration.

Our book ends with classes and the seniors . . . on the threshold of a college career, four years and on the threshold of a life's career.

We've tried to find every one of you with our camera . . . you are here in the Elms . . . eating a ham sandwich, on the dance floor, in the classroom, at a Tuesday night meeting, or in the library studying.

You are an individual at State, and because we believe in the preciousness of each human mind and the dignity of each human soul, we dedicate the 1956 Elms to you the individual at State, to him . . . to her . . . and to you.

RON DEVITO
Editor

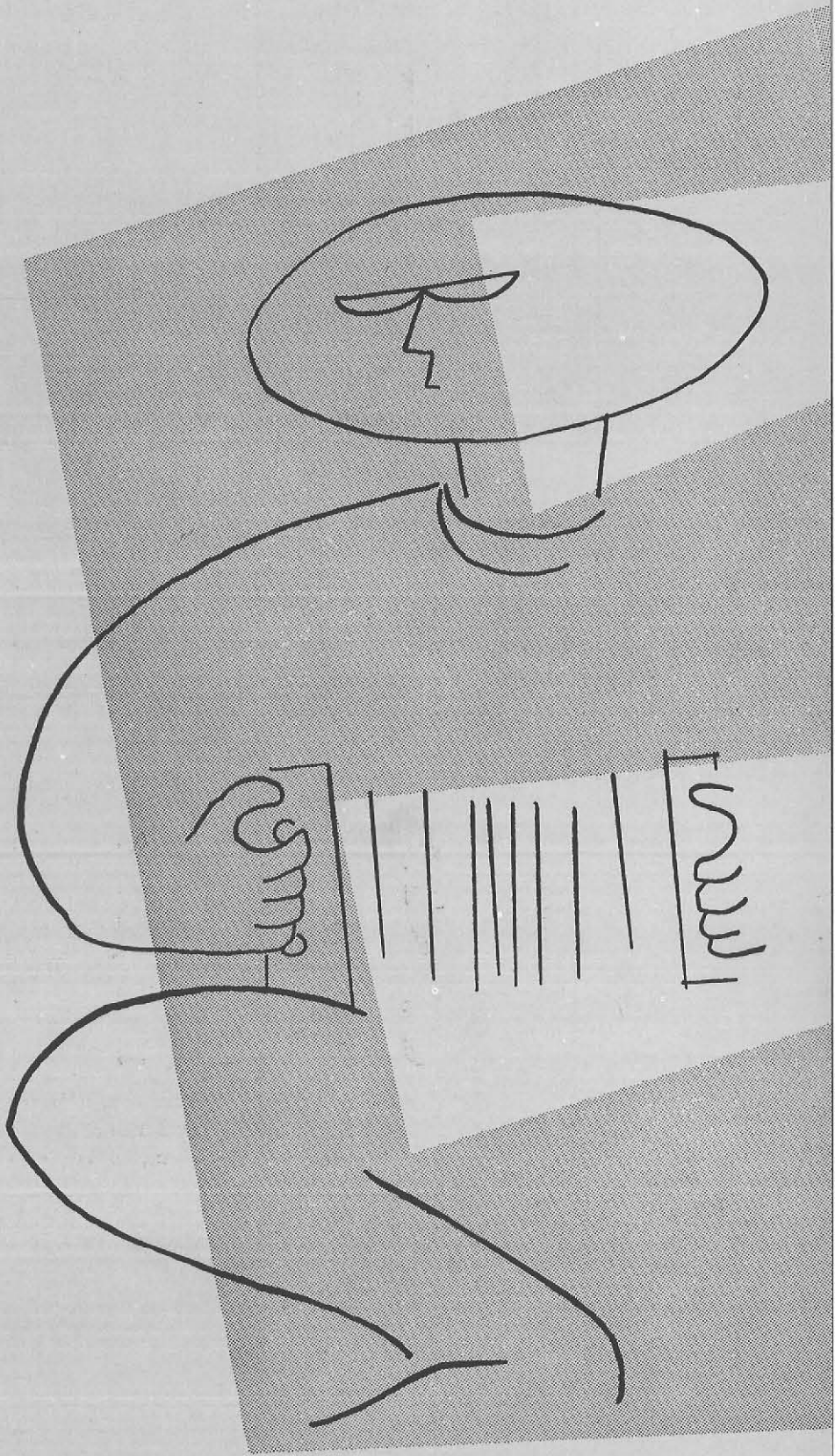
state university of new york
college for teachers at buffalo

56

ELMS

SOCIAL LIFE

He reached out and touched, and all that he touched became part of him . . . the recognition, failure, laughter, work, friendship, disappointment and spirit of campus life became part of him . . . and no student became like another . . . and each grew through student life.











A student at State . . . an individual like no other. He takes one discouraged moment from yesterday, one small recognition from today and builds his tomorrow. He grows. From social life he grows.

He hunts for a chair in the Ad cafeteria or eats lunch in a quiet corner of the auditorium. He gets four or five phone calls a day, or he writes phone messages for someone else.











He's here on these pages . . . dancing, drinking, talking, cheering, eating, walking, thinking, smiling, loafing.

A girl in a tweed coat hops puddles on her way to the gym; another stares out the window at a dance in the union.











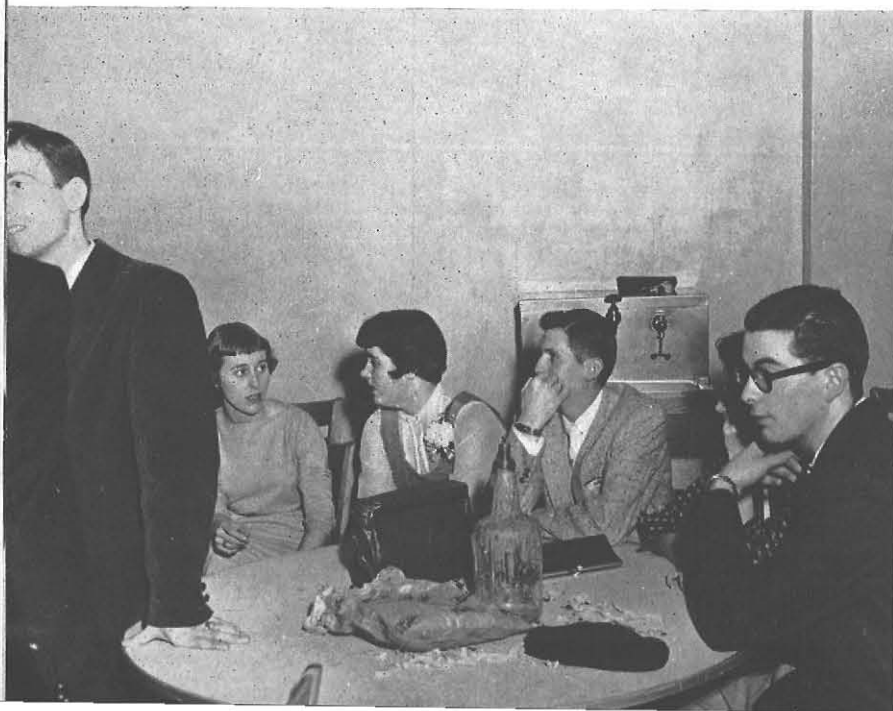












A student everyone knows presents a gift on Moving-up day. Someone hardly anyone knows plays the piano in the lounge and is proud and frightened.

For this is anyone — everyone . . . an organization president drinking black coffee, a student helper watching television, a dorm girl phoning home.

Everyone . . . bad moods, good moods.















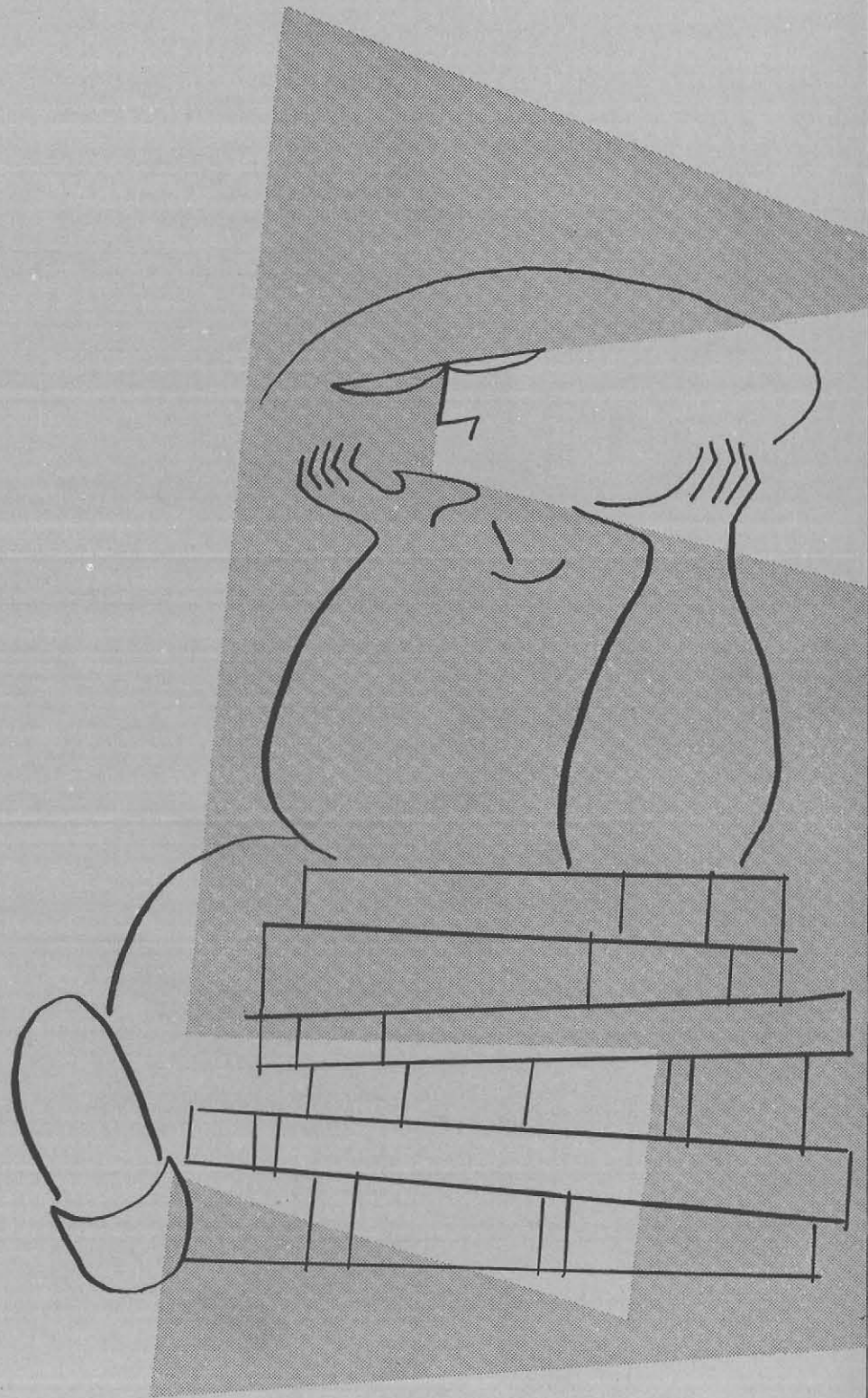


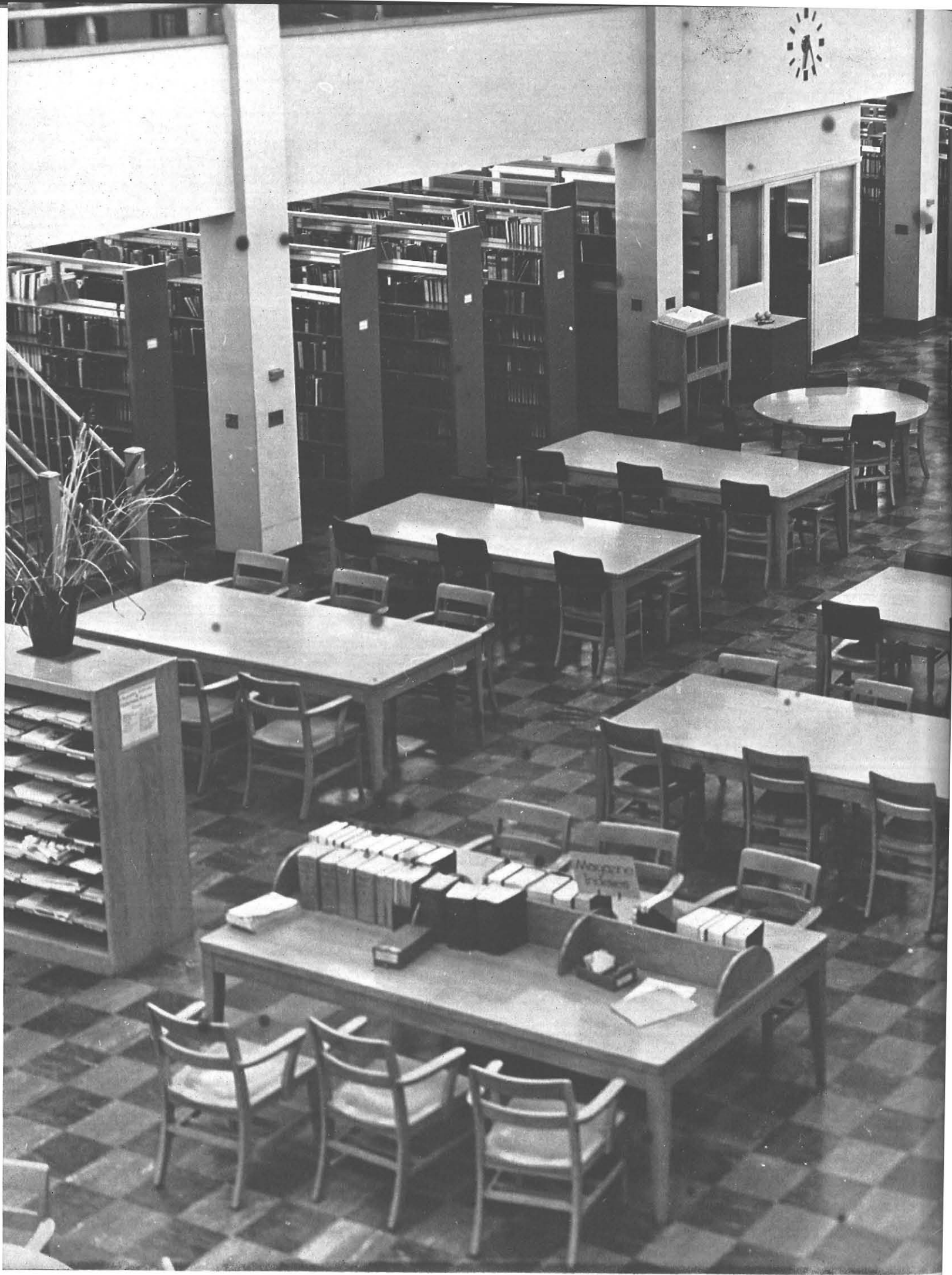
A student at State.
He's the fellow with the brown brief case . . .the one
who's never late for class.
The girl who pretends to be someone she isn't.
The basketball star who participates in the kinder-
garten.
Anyone — everyone.



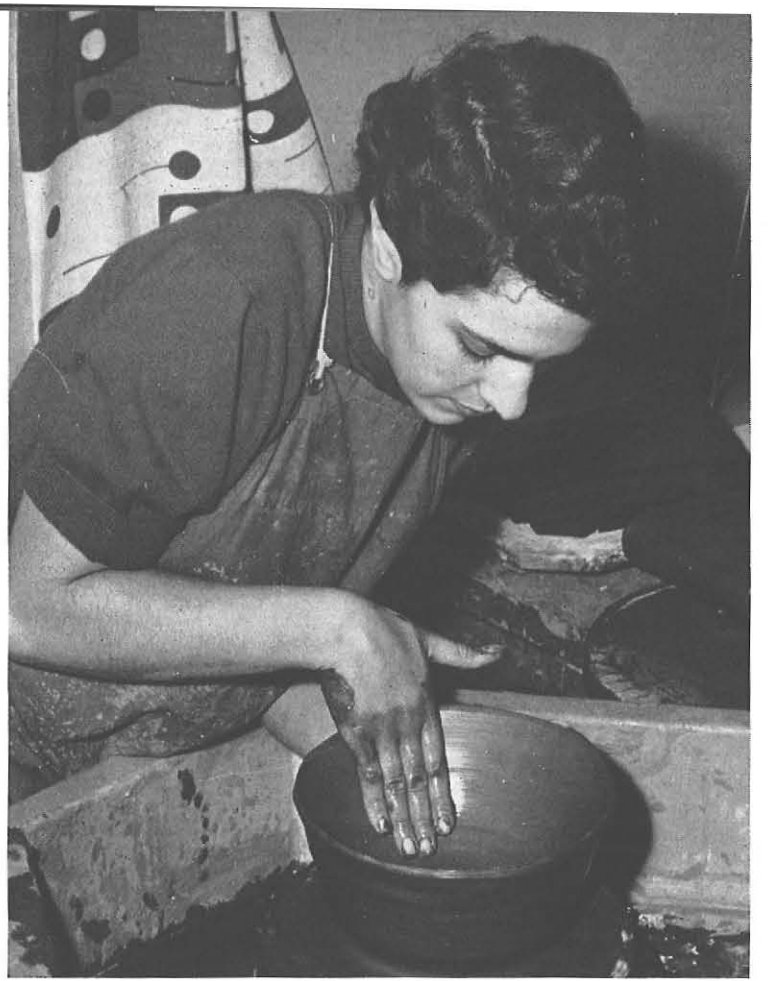
A new idea, a broadening concept of life, and from the thought of the past the student molded his philosophy for the future . . . and he read eagerly of Emerson and his friend studied the genius of Poe . . . and each in his own right learned through academic life.

ACADEMIC LIFE









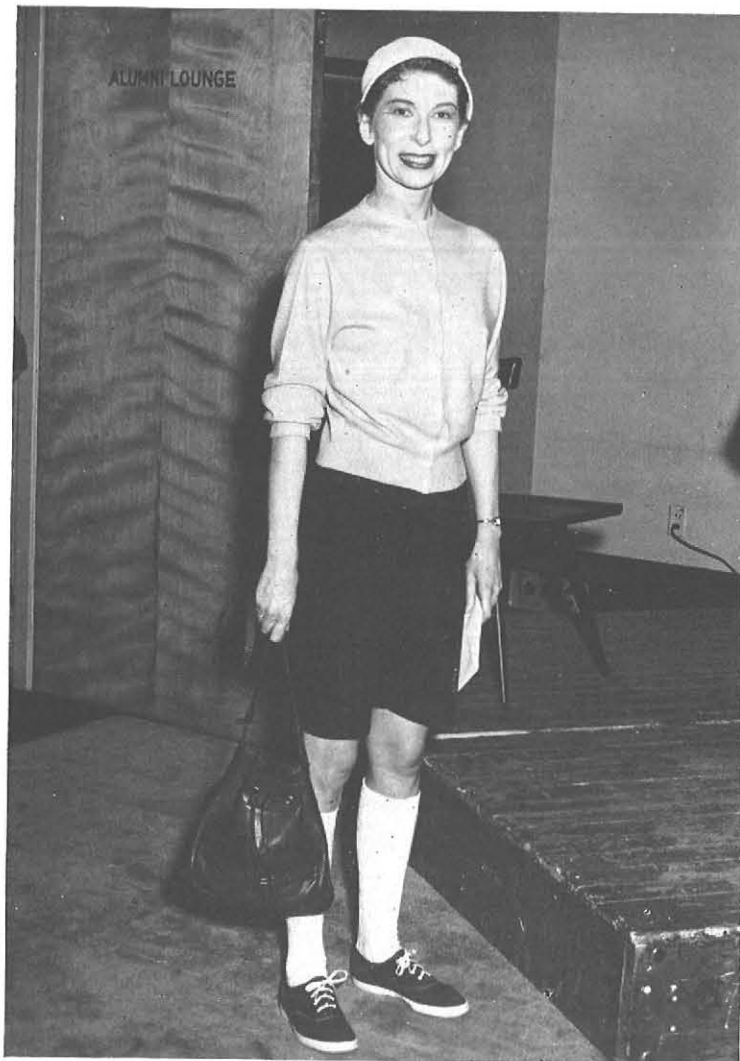


The art ed student . . . brushes, paints, oils,
canvas, cameras . . . projects.

Classes in the union, classes in the Ad, a
schedule crowded with class hours.

The art ed student . . . planning, learning,
contributing, teaching.

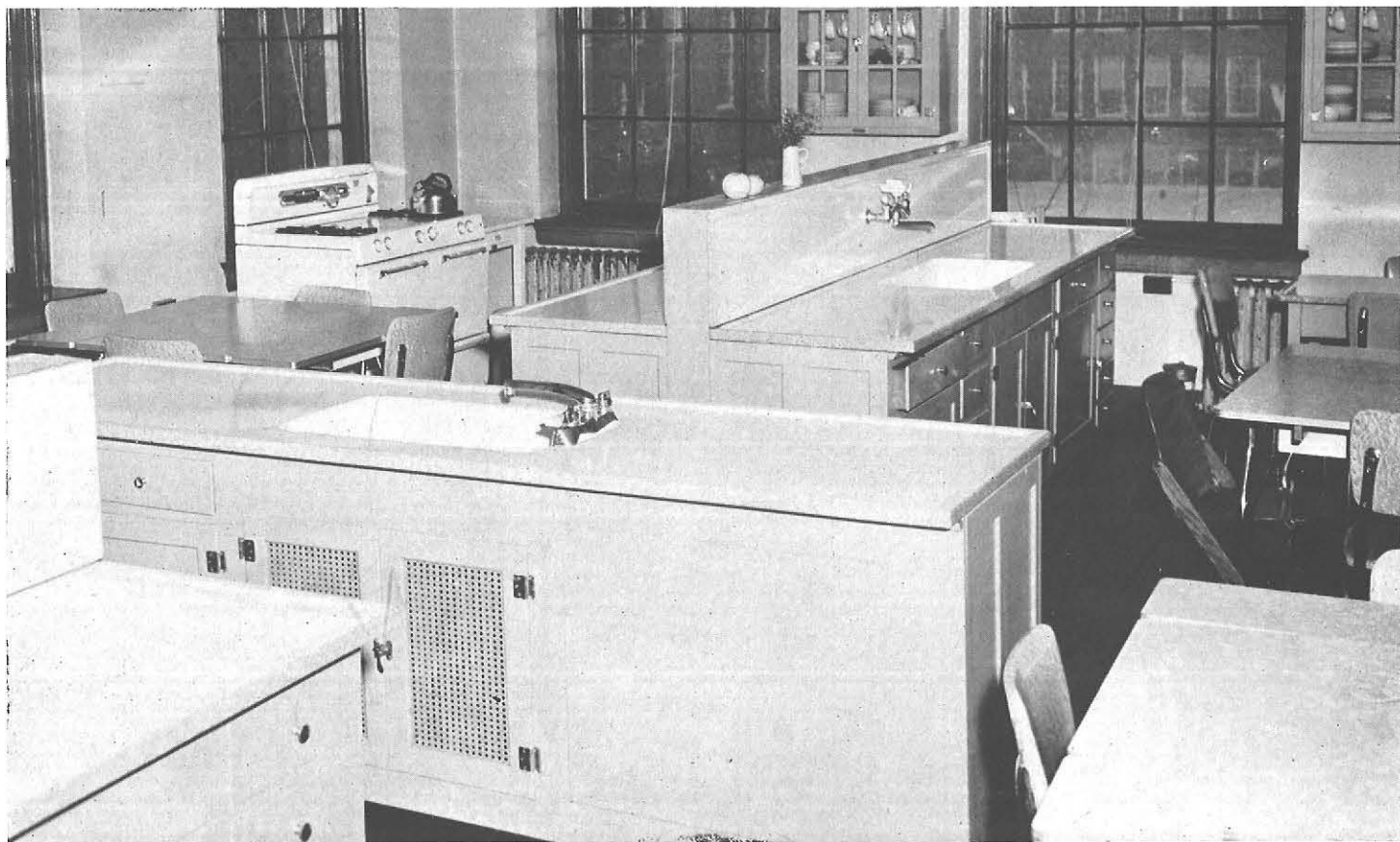


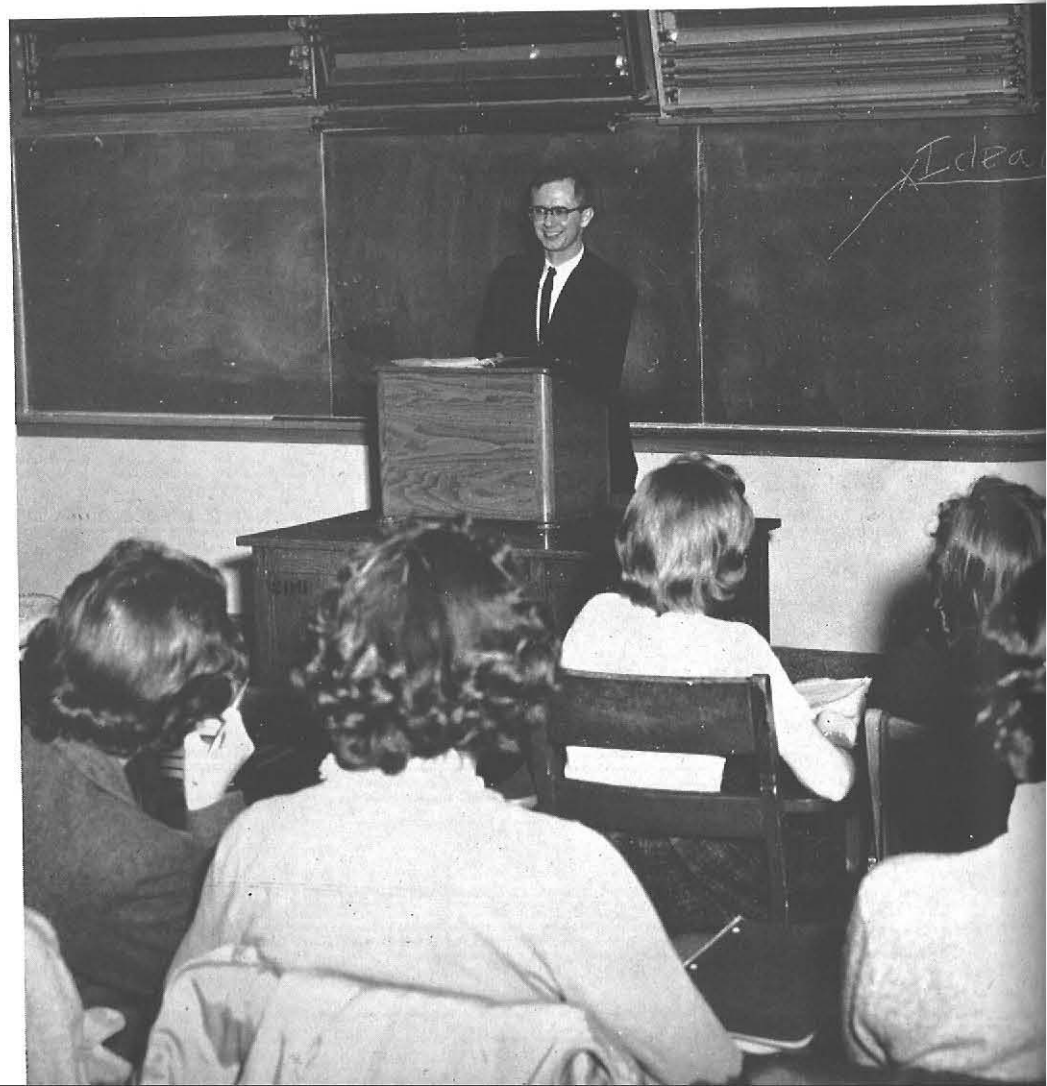






Home economics.
A girl in a white uniform, white shoes . . . professional.
From fudge to full-course dinners, from aprons to coats, she
grows in skill.
And she teaches.







Elementary education.

From the commas and semicolons of freshman composition to the epic of John Brown's body.

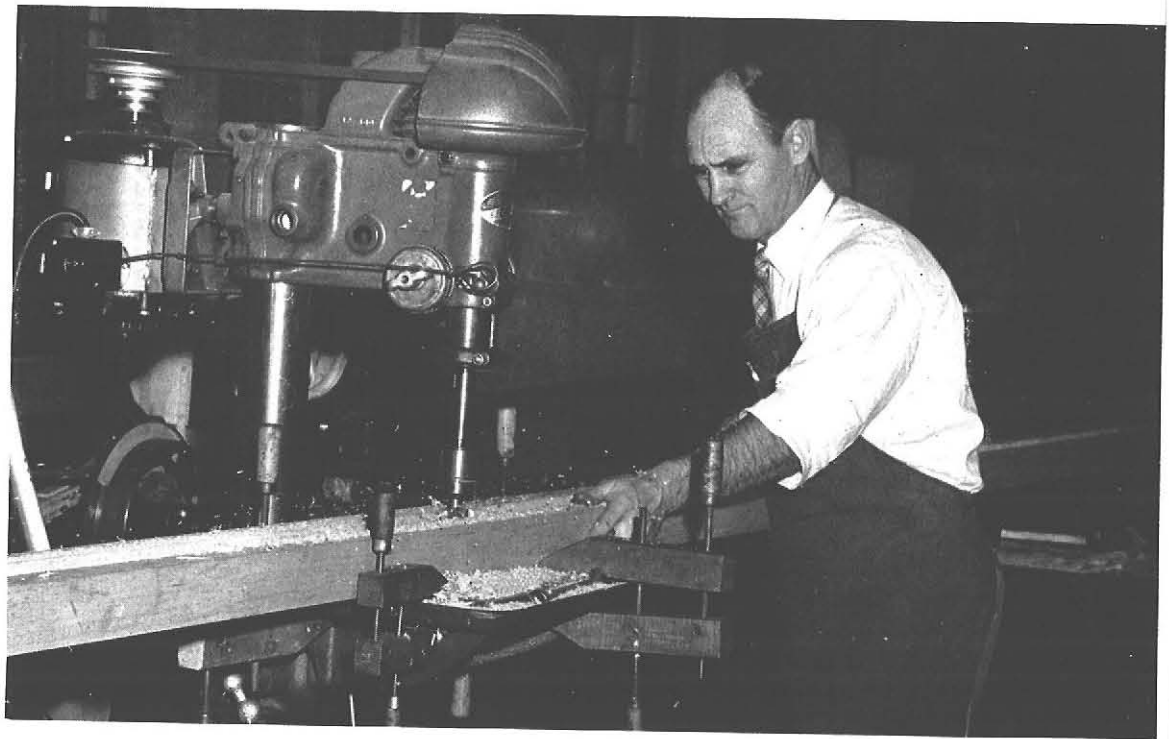
From western civilization to the social theories of this age.

Steps of scientific method, identification of trees, square roots, decimal systems, flutophones, paper sculpture, French civilization — elementary education.





Industrial arts division.
Plans, tools, machines.
Ceramics, wood, leather, metal, plastic, textiles, paper, printing, electricity . . . materials.
Learning skills, learning methods, teaching.

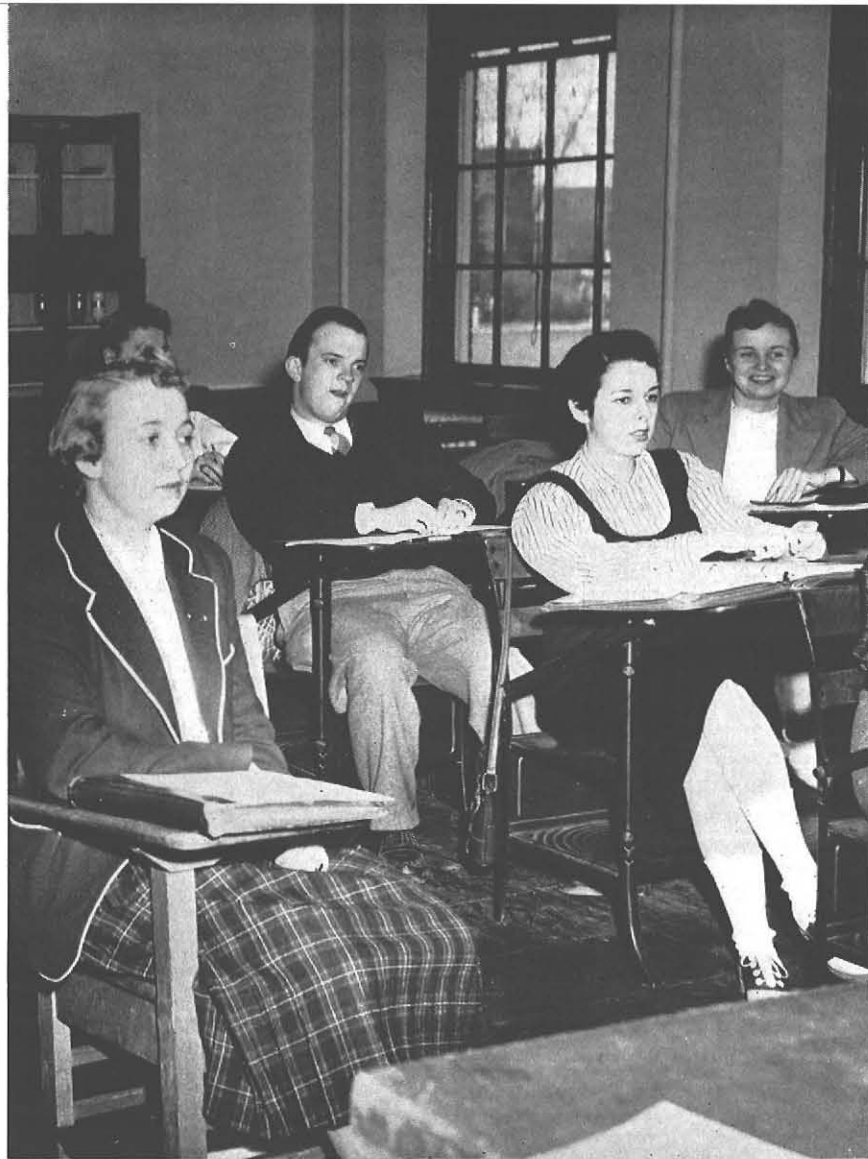


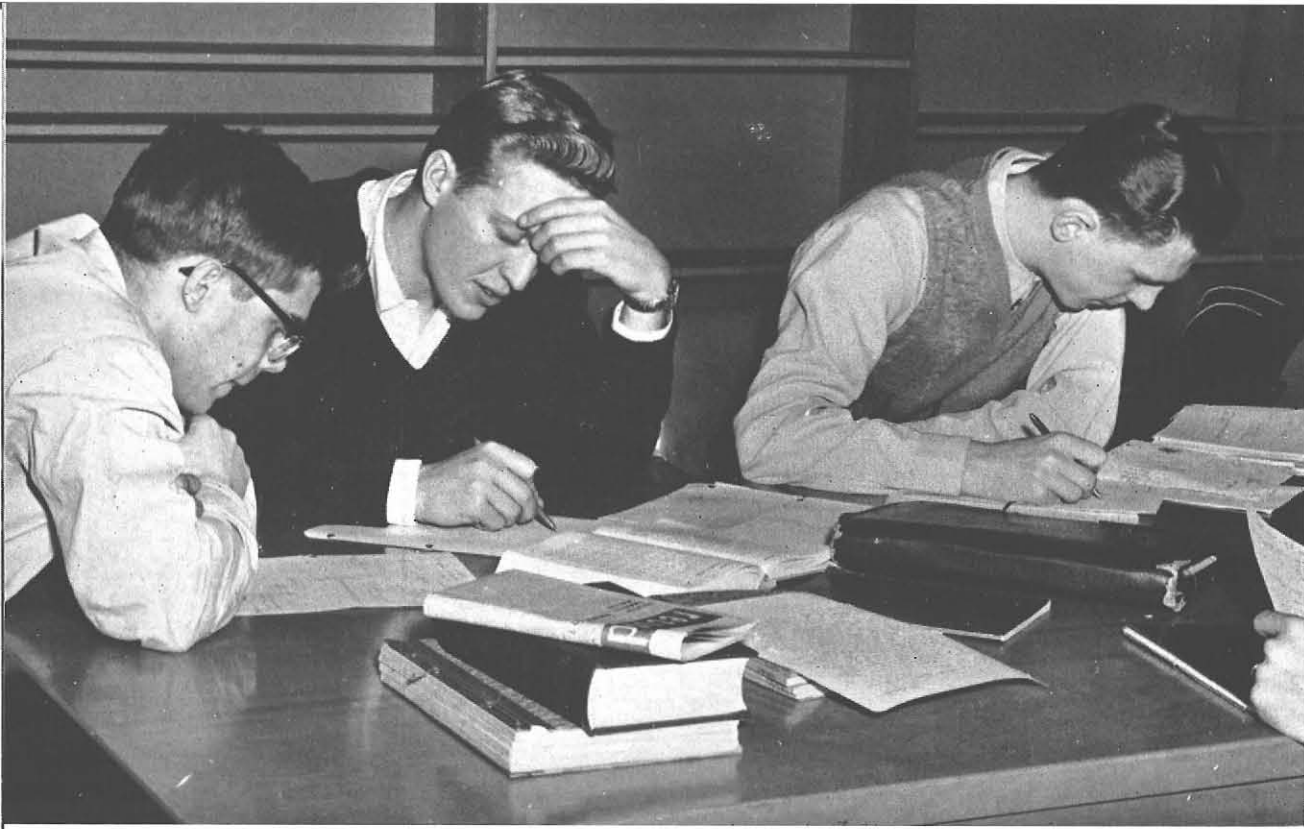
A student in education for the exceptional . . . working with speech handicapped children, mentally retarded children, orthopedically handicapped children.

Education . . . teaching a girl with cleft palate, a boy who can learn only very slowly, a boy with epilepsy or cerebral palsy.

Believing in special education.







Term papers to do. Students comb the card catalog
and consult the Readers Guide. They ask questions. Arms
ache from carrying eight or ten books. Three by five cards,
a typewriter, a paper punch, a blue cover.
And then a grade.



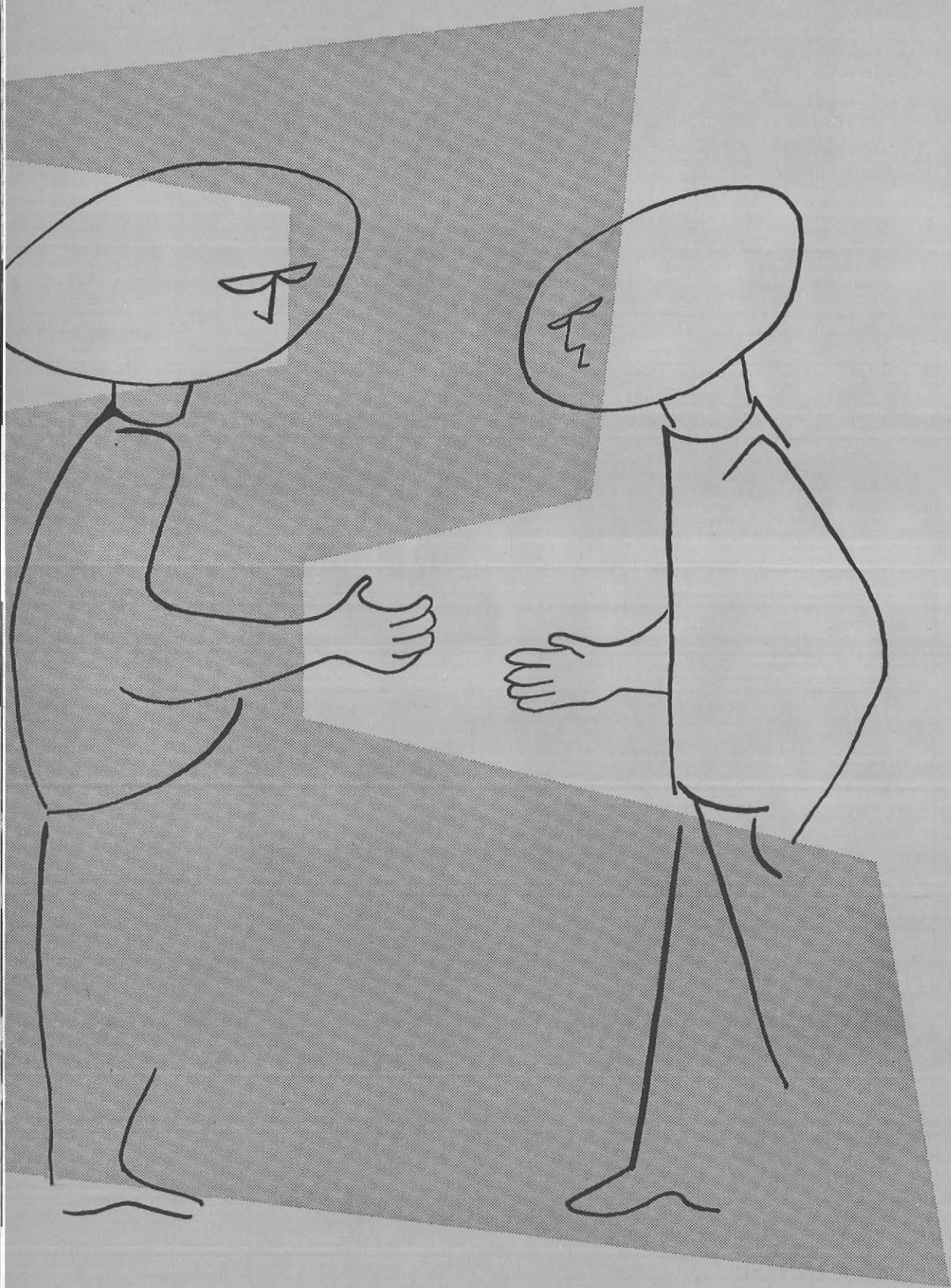


Dean of the college . . . administrator of academic life. Conflicts, requests for extra hours and special course needs bring students to Dean Ralph Horn for academic guidance.

A library staff . . . trained, ready to answer questions about records, books, magazines, teaching materials.

A library . . . growing. Core of college academic life.





Drama drew many together . . . and music and faith and art, and each artist differed from his fellow . . . within the scope of the group there was a leader, and many were followers . . . and the student gave of himself to others, and he became rich through extra-curricular life.

ORGANIZATIONS







First row: Doris LaRosa, JoAnn Twist, Ronald Devito, Cynthia Hurley, Mary Wiktorowski, Susanne Erckert, Dolores Adams, Beverly Mc-Nett, Nancy Molter, Gordon Klopf, adviser. Second row: Joan Dean, acting recording secretary; Judy Dingeldey, acting first vice-president; Joan Haley, recording secretary; Daniel Idzik, president; Rodney Van Housen, vice-treasurer; Barbara Ernst, second vice-president; Joanne Taylor, corresponding secretary; Mary Lou Schmitt, first vice-president; Gail Stephenson, treasurer; David Maul, sergeant-at-arms; Carol Vertalino. Third row: Anna Maria Rosch, Lynn Winter, Francis Reilly, Sally Ann Henry, Anthony Tabbi, Gerald Dalven, Lorraine Weaver, Janice Becker, Joan Kosinski, Donna Schultz, Arthur Frasier, Judith Millspaugh, Annette Arendt, Ronald Thrun, Carol Dean, Ruth Garrett.



student
congress



c-
si
t;
8;
ne
th





First row: Elaine Kourelis, Jacqueline Rush, Joan Kosinski, secretary; Gail Stephenson, chairman; Cecil Rodney, adviser; Deidre Davis, Mary Callahan, Rita Rosati. Second row: Joseph Trimboli, Mary Lou Lynch, Francis Reilly, Arthur Frazier, Anton Schwarzmuller, Dean Zuch, Robert Jennette, Gary Runckel, Sharon Wright, Herman Kuebler.

Student Congress, voice of the student body. An expression of democracy and citizenship in the college community. Congress seeks to represent everyone.

An office in the union, the clicking and tapping of a typewriter, a voice on the phone, people hurrying in and out. A bulletin board.

Meetings — activity room, music room. Delegates, chairmen, officers, committees.

Finance agency . . . a subdivision of Student Congress. It presents the student budget to Congress for approval and to the student body for ratification.

finance
agency



Davis,
r, Dean





First row: Dorothy Hayn, Gail Stephenson, Nancy Slinde, Patricia Walsh. Second row: Jean Fidd, JoAnn Twist, corresponding secretary; Mary Lou Lynch, recording secretary; Donna Schultz, vice-president; Cynthia Hurley, president; William Thomas, treasurer; Susanne Erckert. Third row: Joseph Cannamela, Lynn Winter, Margaret Kneuppel, Nancy Molter, Patricia O'Leary, Anthony Queeno, Donna Gottung.

college union board

College Union board . . . regulating union activities and services.

Christmas week — a tree in the lounge, Wassail bowl, choir, bell ringers, a fireside sing. Coffee hours.

Open house . . . fun and college spirit.





First row: Mary Jane Wickham, Meta Norenberg, Rita Rosati, Margaret Matheson. *Second row:* Ronald Devito, Elizabeth Garcea, Dean Zuch, Benjamin Gronewold, Walter Greenwood, John McRae.

publications board

handbook

Mary Jane Scrymgeour, Mary Jane Wickham, Virginia Beard.





First row: Rita Rosati, Nancy Nichols, Emily Bradshaw, Anthony Tabbi, Joy Yondt, Arlene Layer, Arlene Newell. Second row: Rose Marie Aquino, Joanne Waskey, William Hazelton, Bill Vantine, Joan Boxer, Doreen Pelletier, Colleen Buckley, Margaret Woodall, Margaret Matheson.

The Handbook . . . a student guide on college policy and tradition.
Record . . . a busy Friday night, a box in the hall. A phone ringing
in the publications office, a red pencil, a party.
Elms . . . decisions on theme and cover. Pictures in the lounge.
Deadlines.
Elm Leaves . . . an expression of student thought. Judging, typing,
copy-reading, printing, distributing. Student creativity.

record



Frances Manka, Hazel Ensminger, Maureen Lawler, Jane Anne Haughton, Dean Zuch, Mary Jane VanDyke, Marlene Zack, Jo Anne Reeb, Jean Pancio.





Business staff. Joan Bordeaux editor; Doris Frey, managing editor.

elms



Photography staff. Bill Vantine, editor.



Literary staff. Doreen Pelletier, editor; Jane Anne Haughton, typing editor.



Art staff. Connie Manuse, Mary Owens, editors.



First row: Joris Tate, Mary Callahan, Meta Norenberg, adviser; Rita Rosati, editor; Mary Jane Scrymgeour, Doreen Pelletier. Second row: Ann Druschel, Dean Zuch, Mary Ann Vullo, Jodelle Wuertzer, Margaret Kapp.

elm leaves

summer sessions board

First row: Ellsworth Russell, Margaret Knueppel, Concetta Terranova, Marlene Zack, Albert Burns, Martin Barrett, Marilyn Henline.
Second row: George Sherrie, Gordon Klopf, Lorraine Lange, Theodore Moss, Lorraine Cardillo, Walter Greenwood, Mary Glor, Alfred Jungberg.





pioneer hall

First row: Joan Mitchell, Ruth Walton, secretary. Second row: Sheila Fitzgerald, vice-president; Susan Linnetz, president; Jacqueline Gotti, treasurer.

dormitory council

First row: Carole Tuthill, Nancy Raziano, Sandra Ward, Wilma Benjamin, Joyce Altpeter, Anne George, Elaine Schwimmer, Gloria Dresher. Second row: Mary Ann Canz, Carolyn White, treasurer; Margaret Murphy, Judith Millspaugh, secretary; Mary Ann Abrams, president; Dianne Schmuckmier, vice-president; Elizabeth O'Shea, Mary Lou Lynch, Jane Anne Haughton. Third row: Barbara Brightman, Evelyn Rosenstein, Gayle Schrader, Patricia Davies, Sonya Herbart, Elaine Kahler, Helene Rosenstein, Helen Taylor, Joan Wood, Ann Kavulich, Donna Dahar, Laurita Lodestro, Marie Re, Sheila Fullenweider, Janice Edwards, Hazel Ensminger, Sandra Philbad.





First row: Carole Nelson, Barbara Miller, Wilda Benson, *vice-president*; Doris Heidenreich, Lois Gilbert. *Second row:* Esther Stewart, Jeanne Hyland, *treasurer*; Leila Haywood, *president*; Kathryn Harries, *adviser*; Ann Howard, *secretary*; Hazel Ensminger. *Third row:* Elaine Albrecht, Joanna Sespico, Janet Corrigan, Joanne Messura, Freda Judge, Lola Anne Powers, Gladys Davis, Marjorie Hodgins, Nancy Conklin, Anita Becken.

residence centers council

She lives away from home, and nothing is so important as a letter and a phone call.

Dorm life . . . late hours, unit meetings, dinner at six, rules, special permissions, roommates.

Washing machines that are out of order, luggage rooms overflowing with suitcases, boxes and crinoline, rooms with matching bedspreads and stuffed animals, rooms with socks drying on chairs.

Dorm life.

music board



First row: Joseph Wincenc, faculty chairman; James Rauhe, secretary; Catherine English. Second row: Edward Kostuk, student chairman; William Tallmadge, Robert Jennette, treasurer.

The band . . . a group that really works, a group with spirit. And the band brings spirit to others — students, children, veterans. The vital force of the organization is embodied in Mr. Joseph Wincenc, director.

The orchestra . . . appreciating the great classics and the modern works it plays and interprets, creating a musical appreciation in its audience, enjoying its work.



hungry five

Seated: Francis Ciurezak. *Standing:* Charles Mussen, John Bruno, Stanley Zimmerman, Walter Eustace.



band



First row: John Bruno, Lillian Erth, Lester Bragg, Dolores Russ, Joyce Wright, Beverly McNett, Joyce Sutton, Kathleen Williams, Gretchen Pease. *Second row:* Barbara Rankie, Peter Macris, Carolyn White, Jane Welty, Helene Enoch, June Zefers, Jane Bauer, Barbara Thorley, Geraldine Heck, Dale Trost.

First row: Adrian Bryce, Donald Weaver. *Second row:* Mary Jane Lewis, Ada Carpenter, James Rauhe. *Third row:* Joseph Stevens, Robert Gitzin, Jean Battles, James Scott, Edward Ahrens.

First row: Charles Wolffer, Charles Andolino, Stanley Zimmerman. *Second row:* Lois Gilbert, Leila Haywood, Joan Metselaar, Joyce Cameron. *Third row:* Newton York, Luke Welgoss, Bruce Donn, David Axelson.





Robert Jeanette, Nancy Gallagher,
Charles Mussen, Agnes Freiner, Barbara
Mabie.

First row: Edith Rothman, Doris Willert, Anne Saxton,
Dorea Bumbar. *Second row:* Mary Laine Phatiger, Annette
Fayer, Joan Droit.

First row: Jay Tuttle, Elaine Schwimmer. *Second row:*
Ilse Doerler, Barbara Miller, Janice Becker, Janice Bloom,
Sharlene Bolt. *Third row:* Willian Ogden, Ralph Slade,
Nobert Gurbacki.



Stanley
wood,
York,



orchestra



string ensemble



Jane Welty, Bonnie Brock, Rosemary Simpson, Helen Taylor.





glee clubs

First row: Paul Homer, William Tallmadge, *adviser*. *Second row:* Herman Keubler, Peter Macris, Robert Weaver, Edouard Koeppel, Paul Josephson, George Weinfurtner, *secretary-treasurer*; Daniel Kowalski, Walter Merrick, Robert Gitzin, Sheldon Merritt. *Third row:* Paul Cline, Joseph McCabe, Kenneth Hennig, Ivan Lawson, Newton York, Lowell Smith, Francis Conrad, Lee Travers, Monroe Whiting, Eugene Piedmont, *president*; Thomas Phillipponi. *Fourth row:* Thomas Brown, William Farrell, Allan Jones, Albert Sinnigen, Gordon Ressus, Paul Manke, J. Reginald Miles, Howard Penny, Pearson Bailey.

First row: Rhonda Roucco, Joan Schroeder, Marilyn Watkins, Virginia Crozier, Cynthia Denny, Jean Nussbaum, Louise McLennan, Thelma Grisson, Mary Lou Gray. *Second row:* Anita Becken, Carole Tragash, Geraldine Borom, Loretta Borkowski, Barbara Brimont, Kathleen O'Rourke, Mary Jane VanDyke, Joan Heintz, Ann Rasmussen, Johanna Wagner. *Third row:* Jean Fidd, Clara Smith, Gloria Craine, Carol Schultz, M. Joanne Meloon, Dorothy McMahon, Elsie Zdzieblo, Patricia Schlehr, Madie Curry, June Sibble, Dale Lewis, Bess Mae Greenberger. *Fourth row:* Shelia Fitzgerald, Wilda Benson, Joyce Staudt, Susan Smith, Carol Ann Bettcher, Mary Louise Frombgen, Susan Phelps, Nancy Potter, Elizabeth Washington, Annette Roth, Majorie Grant, Jean Naish.

a capella

First row: Barbara LaBarge, Roberta Beebe, Jane McLaughlin, Barbara Betschen, Ethel Bailey, Shirley Covell, Nancy Gilson, Marilyn Valentine. *Second row:* Carole Tuthill, Beverly Courtney, Donna Walker, Carol Klein, Barbara Bailey, Constance Carberry, *secretary-treasurer*; Margaret Miller, Jean Barone, William Tallmadge, *adviser*. *Third row:* Diane Hall, Marion Touseye, Mary Fiebelkorn, Carol Mills, Patricia Horn, Madie Curry, Helen King, Barbara Gertz, Janice Bennett. *Fourth row:* George Weinfurtner, Francis Conrad, Walter Merrick, Lawrence Griffin, J. Reginald Miles, Thomas Phillipponi, Gordon Ressus, William Ogden, Paul Cline, Thomas Brown, Robert Weaver, Peter Macris, Herman Keubler. *Fifth row:* Nicholas Macrides, Monroe Whiting, Edward Kostuk, *president*; Paul Manke, Howard Penny, Eugene Piedmont, Lee Travers, Pearson Bailey, Albert Sinnigen, Lowell Smith, Edouard Koeppel, Allan Jones, Kenneth Henning.



madrigals

A Cappella choir . . . familiar robes, a familiar name on concert programs, good voices. A Cappella . . . opportunity for trips and varied programs.

Glee clubs . . . Christmas concert, spring concert, singing music loved by college students. Creating music and fellowship, too.

First row: Pearson Bailey. *Second row:* Constance Carberry, Walter Merrick, Robert Weaver, Lawrence Griffin, Barbara LaBarge, Barbara Gertz, Ethel Bailey, Madie Curry.





First row: Carol Palmer, co-captain; Patricia Hackenberry, co-captain. Second row: Sonia Root, Jane Carr, Joanne Cohn, Marjorie Hodgins, Ann Kavulich, Patricia Minken.

majorettes



gunnerettes

First row: Barbara Munro, Rosemary Costello, Jeanne Bermann, Edith Lapham, Susan Rosenberger, Lorraine Weaver, Joyce Staudt, Suzanne Munro, Gail Reilly, Marie Kirkland, Dolores Russ, Sharon Dobrovolsky, Elizabeth Olson, Louise McLennan, *secretary.* *Second row:* Carole Wittner, *treasurer;* Phyllis Bueger, Patricia Bjorklund, Diana Pares, Linda Joslin, Velma Boyles, *captain;* Dorothea Wlodarczyk, Jean Fidd, Deanna Davy, Joanne Blaha, Sandra Haas, Joanne Granite, Shirley Schwartz, Joan Gardner, *co-captain.*



drilletes

First row: Mary Insera, Margaret Newman, Joanne Smith, Arline Annunziato, Arlene Klem, Barbara Bottomley, Susan Phelps. *Second row:* Victoria Cosmano, *co-captain;* Eileen Dickson, Diane Kaiser, *co-captain.* *Third row:* Josephine Parkes, Marcia Kieta, Marjorie Anderson, Frances Manka.

tes



First row: Geraldine Marapese. Second row: Carole Piper, Joan Rindfleisch, Helen Taylor. Third row: Phyllis Carpenter, Joan Ormsby, Donna Delahunt. Fourth row: Judith Millspaugh, Ann Scheer, Joan Staub, Muriel Kay, Nancy LaLonde.

cheerleaders



speech arts board



First row: Phyllis Levine, treasurer; Concetta Terranova. Second row: Walter Blind, Daniel Clifford, Arnold Popinsky, president; Francis Reilly.



First row: Colleen Mullen, vice-president-secretary. Second row: Arnold Popinsky, Concetta Terranova, president; Donald Trueblood, adviser. Third row: Mary Jones, Henry Walbesser, Janice Edwards.

nu kappa alpha



First row: Herman Kuebler, Walter Blind, vice-president; Pauline Duckett, corresponding secretary; Cynthia Miller, Shirley Sandler, Thomas Ahern. Second row: Lucy Silvaroli, Mary Rickert, Patricia McKeon, Patricia Hackenberry, Carol Palmer, Mina Goossen, adviser; Francis Reilly, president; Phyllis Levine, treasurer; Kaloma Thompson, Sandra Sisson, Jane Carr, Myrna Jean Carr, Linda Kanowitz. Third row: Marilyn Tropman, Donald Wildy, Donald Bieber, Ronald Peters, Theodore Di Pasquale, Daniel Clifford, Robert Wiegand, John Richert, Barbara Willis, Beverly Wiegand, Bonnie Kulow, Yvonne Castellion, Anthony Cox.



casting hall

Casting Hall . . . interpretation and presentation.

Arena theater or stage production — lights dim, programs rustle and then are quiet. Only the world of the play exists.

Nu Kappa Alpha — forensic group.

Debating a prominent issue, meeting other college debating organizations.



Cynthia
Patricia
Kalo-
Troopman,
and John





convocations board

Publicity, good publicity. A crowded auditorium — or a smaller audience. Introductions, ideas, coffee hours.

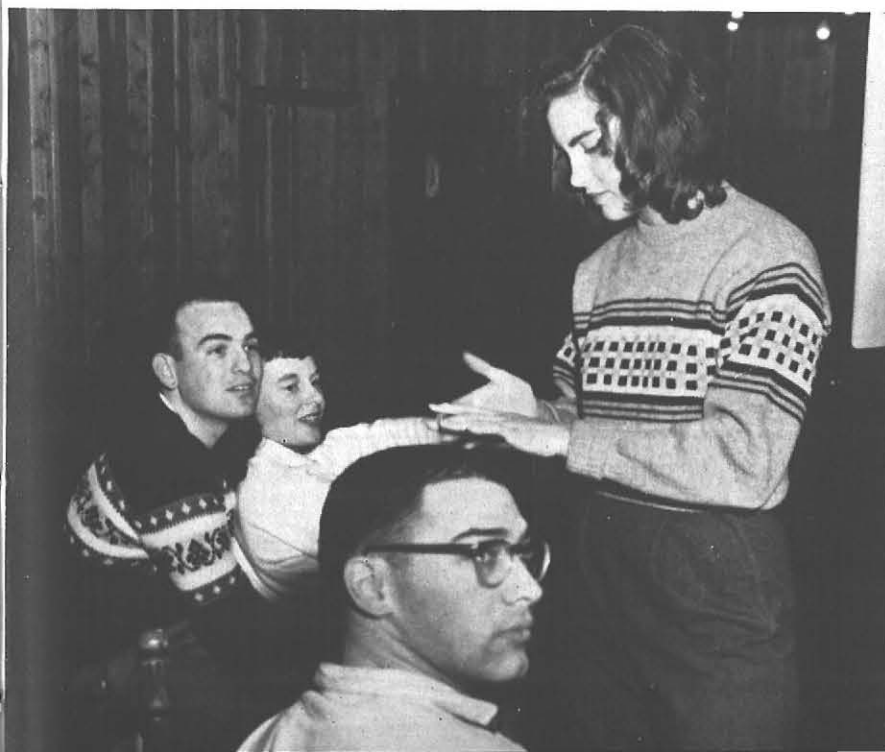
Convocations board.

Janet Weber, *co-chairman*; Marilyn Koerber, *recording secretary*; Allan Jones, *treasurer*; Dorothy Duminuco, Sharon Wright, Donna Schultz, *corresponding secretary*; Emily Bradshaw, *co-chairman*; Margaret Matheson, Gordon Klopf, Carl Hein, *adviser*.



camp board

First row: Katherine Meyerhans. Second row: Doris VanAllen, Lyn Musalino, Herman Kuebler. Third row: Howard Bethel, vice-chairman; Marilyn Morris, secretary; David Hammond, treasurer; Grace Aspray, faculty representative. Fourth row: James Strauch, Louis Callan. Fifth row: Charles Fellner, Raymond Bradley, John Urban, chairman.



College camp.
Toboggans, snow, cold fingers.
Planting trees, searching for insects.
Memorable days.



First row: Robert Kersch, vice-president; Alfred Heinen, Margaret Julian, Gerald Duffy, Charles Torch, president; Edith Lapham. Second row: Robert Smith, Denise Aakeson, Miriam Spaulding, adviser; June Fischer, Dolores Russ, secretary; Martha Hasner, Barbara Tansey, William Ogden. Third row: Robert Lamparter, treasurer; Mercer Guerry, Mary Jane Lewis, Ann Scheer, Gary Runckel, Leland Gage, Mary Hendricks, Albert Tomm, Artnoll Wegner, adviser; James Jedele.

athletic
board

women's athletic association

First row: Mary Ann Vullo, Margaret Matheson, June Fischer, vice-president; Janet Lau, treasurer; Joan Kosinski, Arlene Newell. Second row: Mary Szpakowski, Mary Hendricks, Miriam Spaulding, adviser; Jo Ann Carberry, Jane McNess, recording secretary; Marilyn Morris, Margo Myers. Third row: Gloria Ryerse, Diane Reinecke, Winifred Macnish, president; Patricia Bell.



men's athletic association

First row: August Hein, chairman; Albert Tomm, Alfred Heinen, treasurer; Paul Luczak, Gary Runcel. Second row: George Kontos, secretary; Richard Kearsing, Artroll Wegner, adviser.





First row: Robert Smith, Raymond Haines, Dennis Taylor, Gary Rungle, Paul Lempko, James Deerfoot, Frank Cadaro, Charles Andolino, Emanuel Axelrod, Robert Kersch, William Keller. Second row: Joseph Biondolillo, Norman Gustavel, Jack Pangburn, Douglas McGregor, Donald Woods, Stanley Zimmerman, Richard Kearsing, William Forbes, Bruce Garnish, Michael Pirowskin, J. Reginald Miles, Bruce Nichols, Silas Manspeaker, John Schnabel, Rudolph Burger, coach.

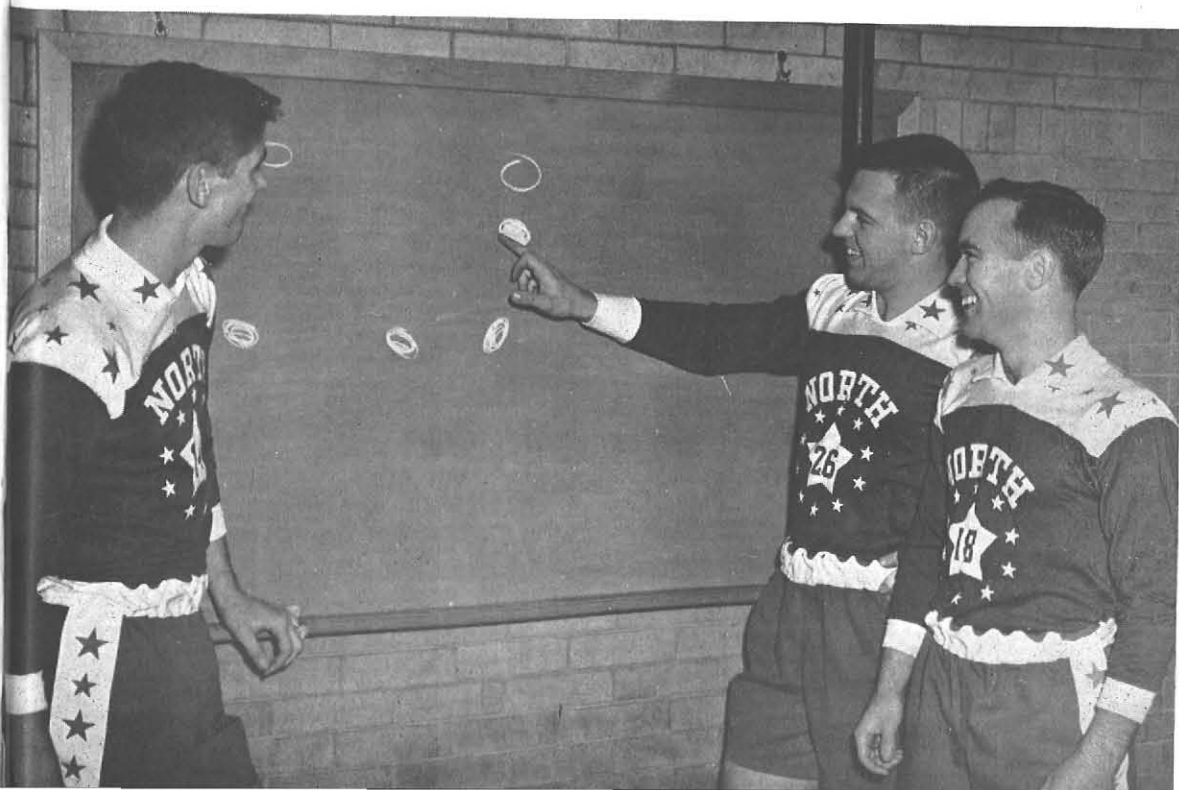
A rainy day with mud — perhaps a loss. A win the next time.

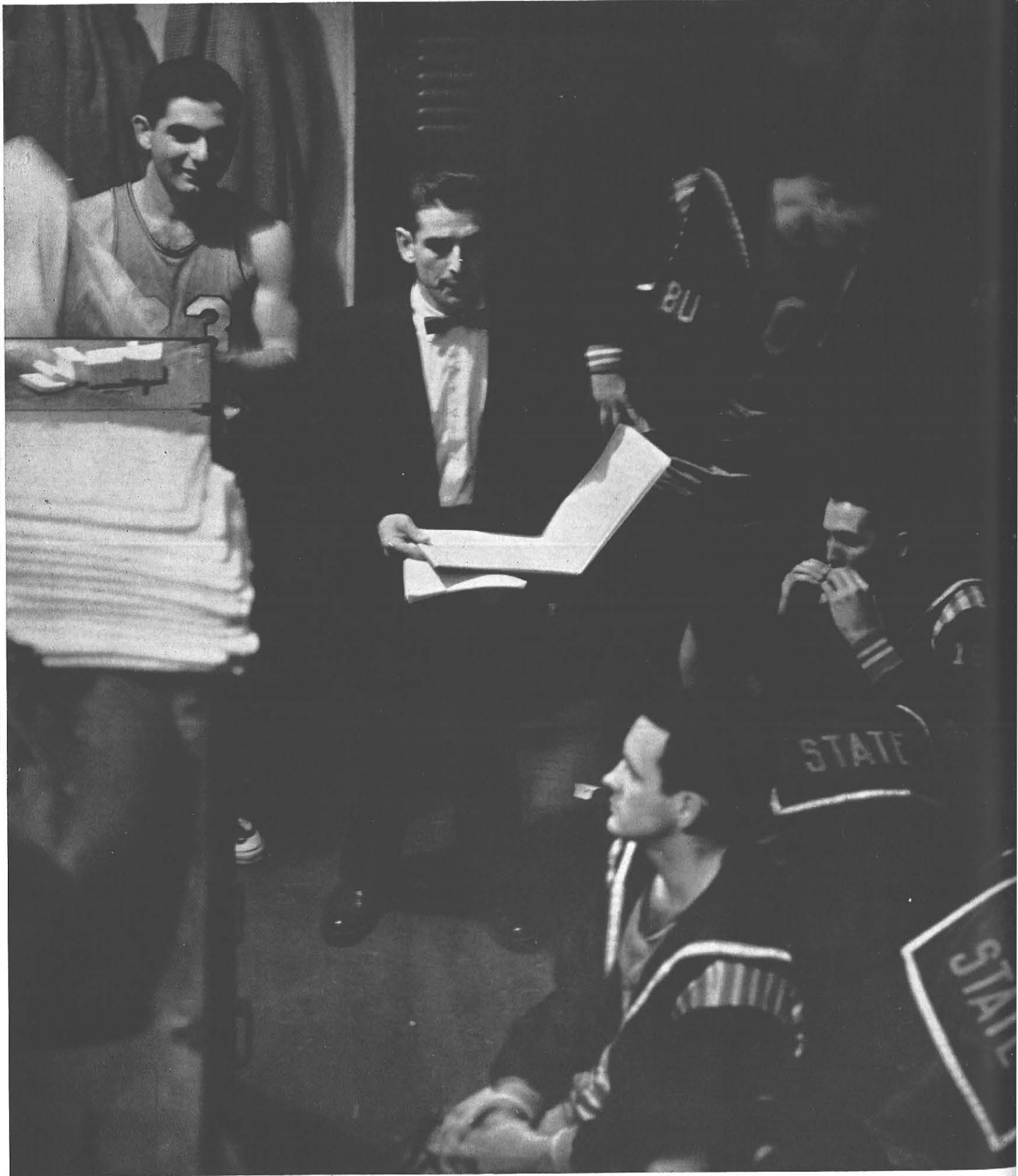
Team spirit, school spirit, yells and color — a soccer day.

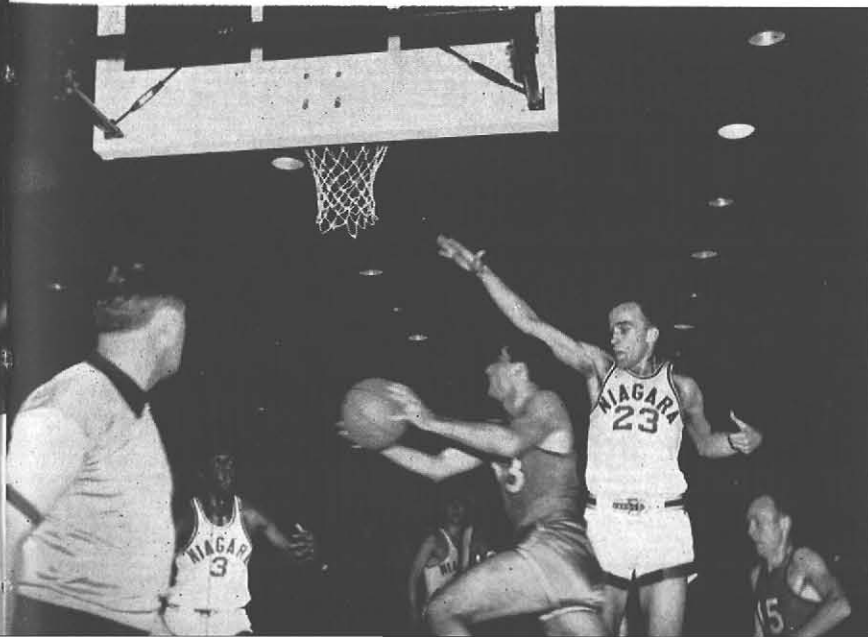
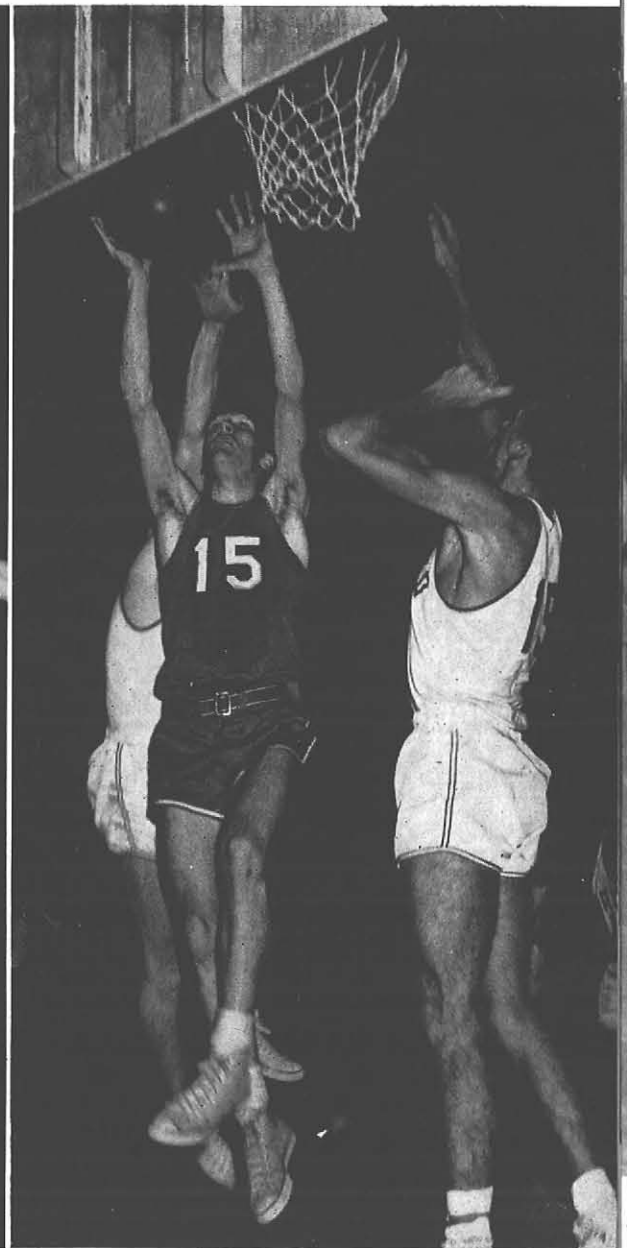
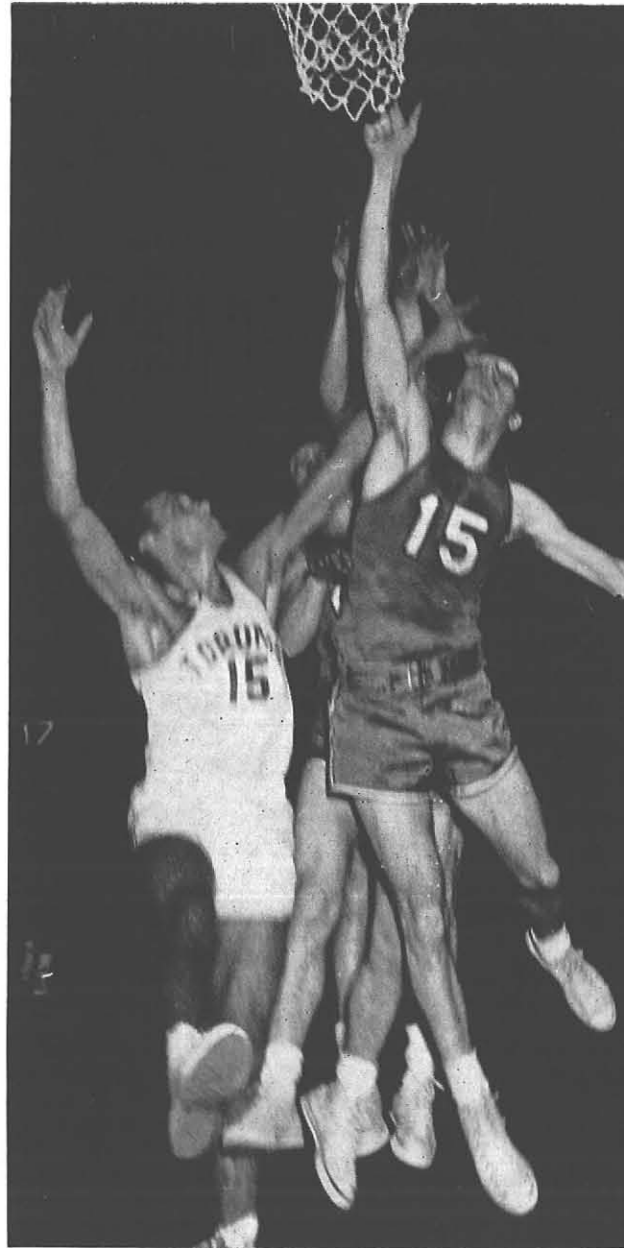
Seniors leaving, freshmen learning, a team constantly losing and gaining ability, growing surely.

Pride, competition and co-operation.

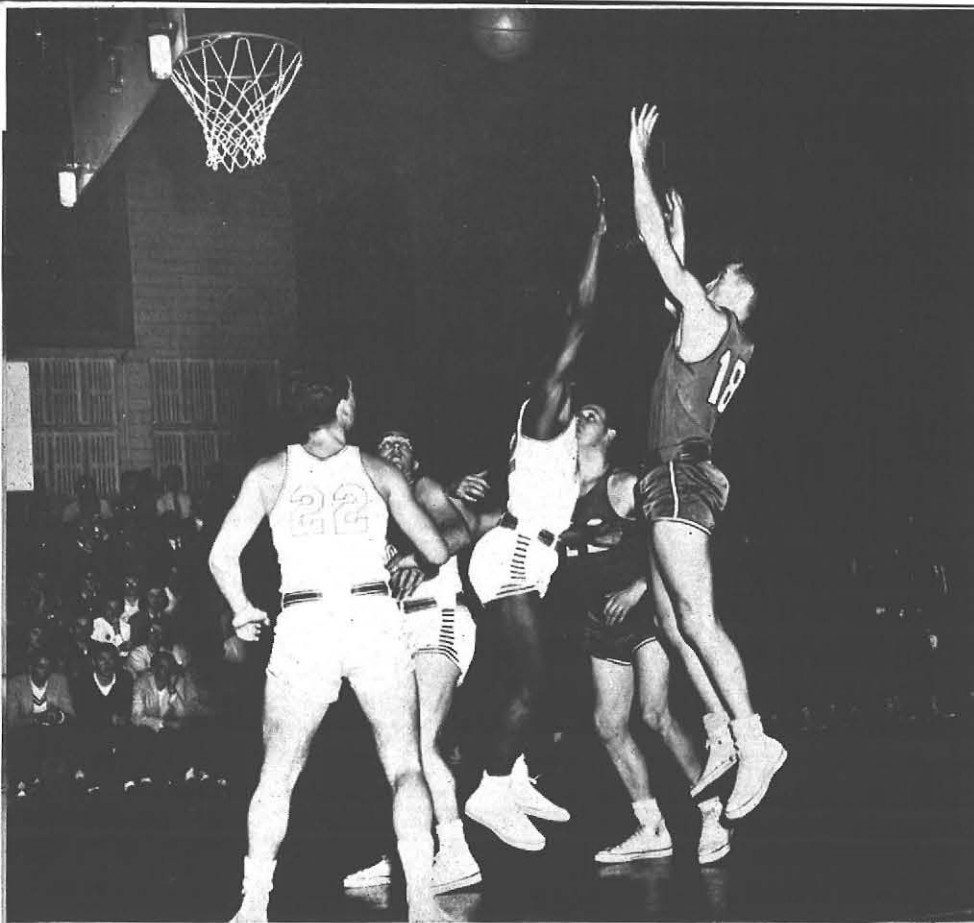
SOCCER







basketball

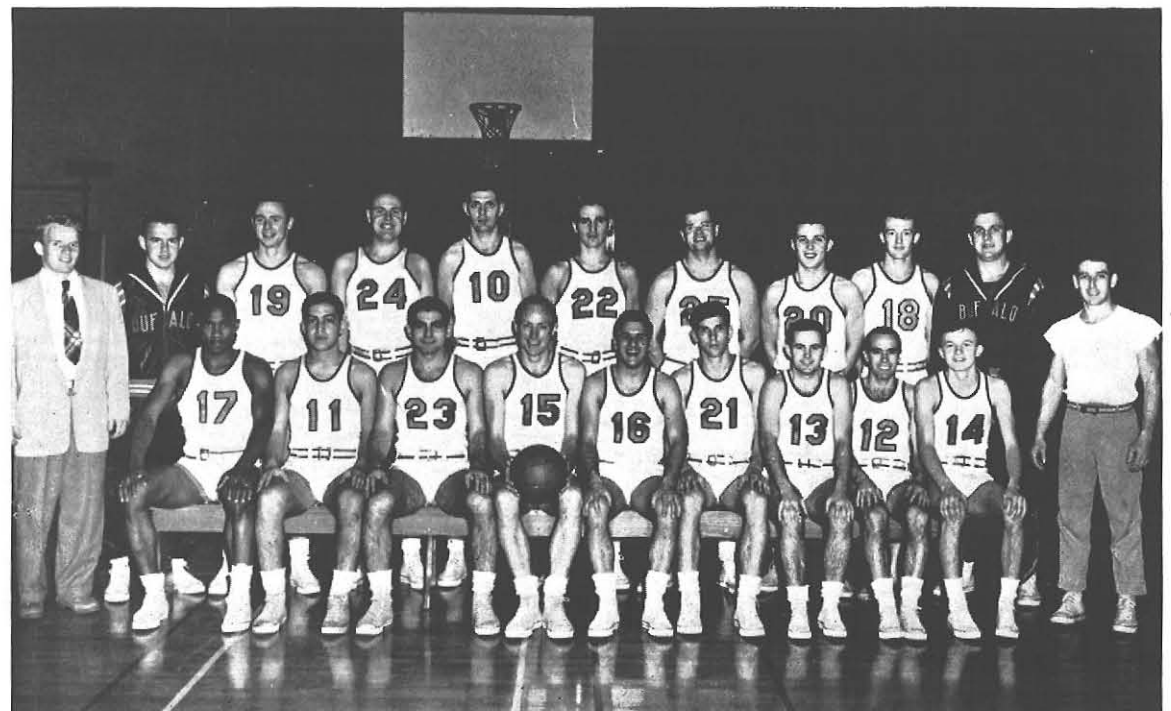


Basketball.

Fast-moving, requiring skill, ability, teamwork. A hard game.

A blast on the whistle, a crowd's cheers and screams, a basket.

First row: Samuel Austin, James Coppola, Joseph Merlo, Richard Stotz, captain; Joseph Teresi, Raymond Haines, Donald MacLeod, Silas Manspeaker, Stanley Radomski. Second row: Evan MacDonald, manager; Gary Runckle, manager; John Schnable, Thomas Maloney, James Brown, Howard Meyers, William Parker, Paul Luczak, Mercer Guerry, William Keller, manager; Lawrence Katzman, coach.





First row: Donald Ellis, J. Reginald Miles, Russell Nolte, William Gagnon, Frank Cordaro, Patric Murphy, John Yambor. *Second row:* Alan Sommen, *manager*; Joseph Bessel, Anthony Mesmer, George Fisher, Alfred Heinen, Dennis Taylor, Bill Vantine, Robert Knapp, Robert Winters, Richard Mazur, Sery Marasco, Glenn Shupe, Robert Murray, *coach*.

track





indoor track

Cross country, indoor track, outdoor track.

A tough meet and a cold day.

Groups of cheering onlookers. A winning squad, a championship.

First row: William Gagnon, Richard Mazur, Dennis Taylor. Second row: Robert Murray, coach; Glenn Shupe, Alfred Heinen, George Fisher, Stanley Zimmerman, Bill Vantine, Walter Warner, manager.





First row: Joseph Bessel, William Gagnon, Dennis McCarthy, John Yambor. Second row: Walter Warner, Donald Ellis, Anthony Mesmer, George Fischer, Robert Knapp, Alfred Heinen, Robert Murray, coach.

cross country

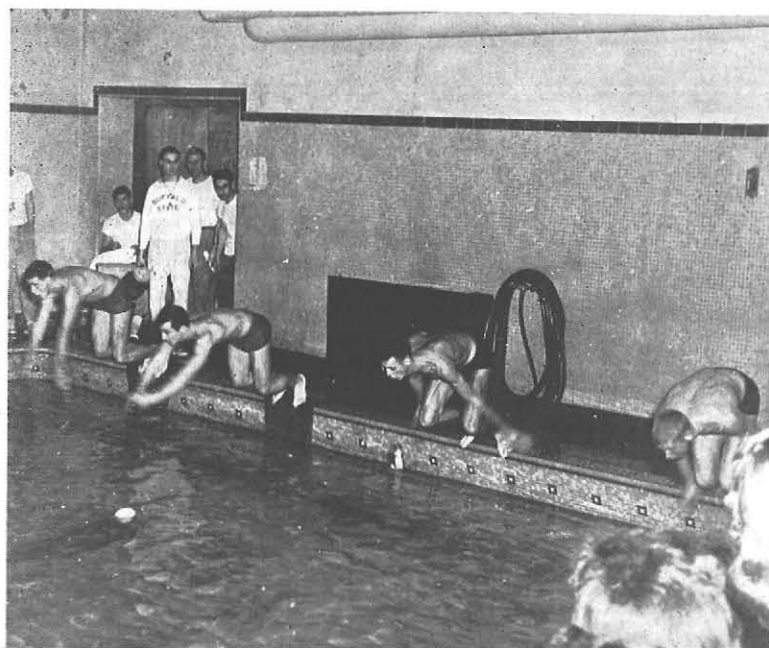


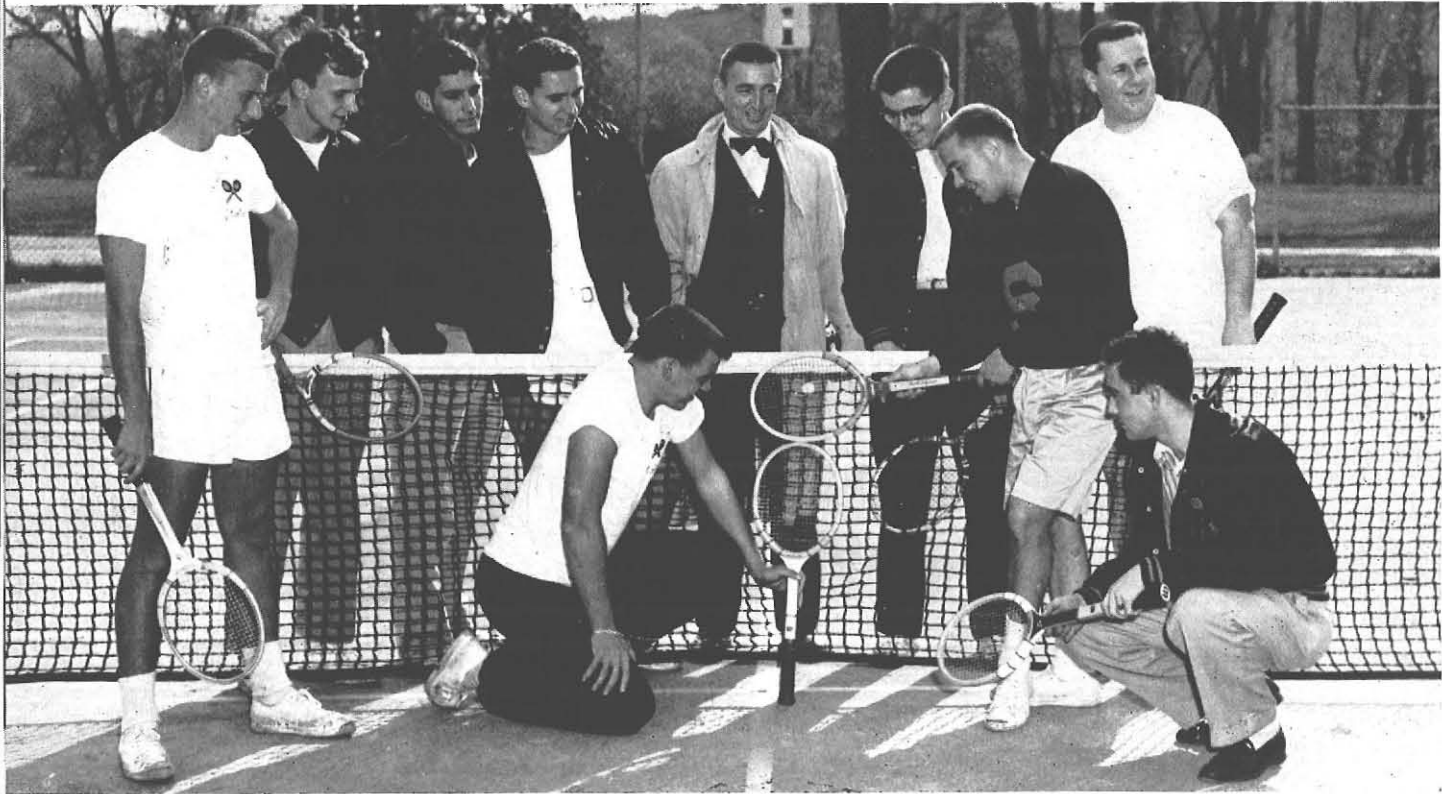




First row: Robert Maybeck, Howard Bethel, Kenneth Hennig, Robert Zastrow. *Second row:* Lawrence Zangerle, *coach*; August Hein, *manager*; Alfred Bean, David Daboll, Raymond Kissel, Robert Kersch, George Kontos, James Lavell.

swimming





First row: Robert Olear, Richard Weigert, captain; Robert Sprenger, Newton York, manager. Second row: Stanley Radomski, Anthony Bueme, John Filsinger, Howard Sengbusch, coach; Henry Dowski, Thomas Kiene.

tennis

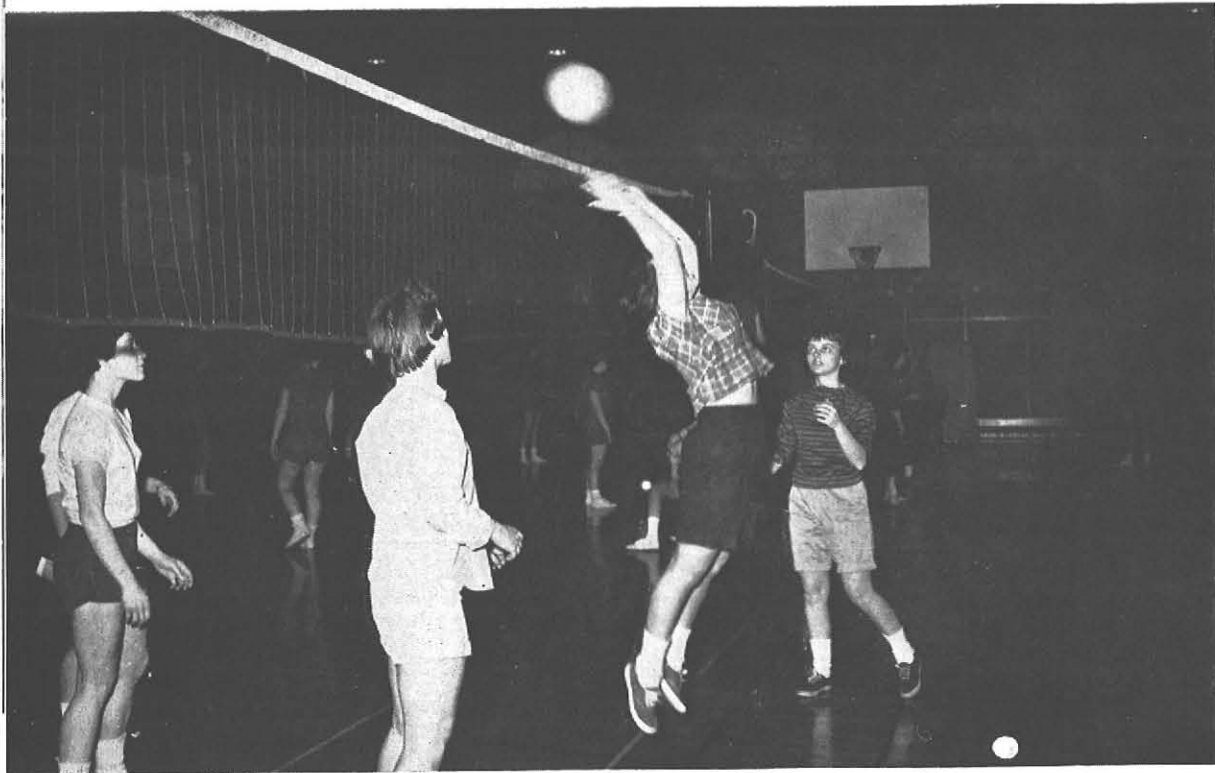
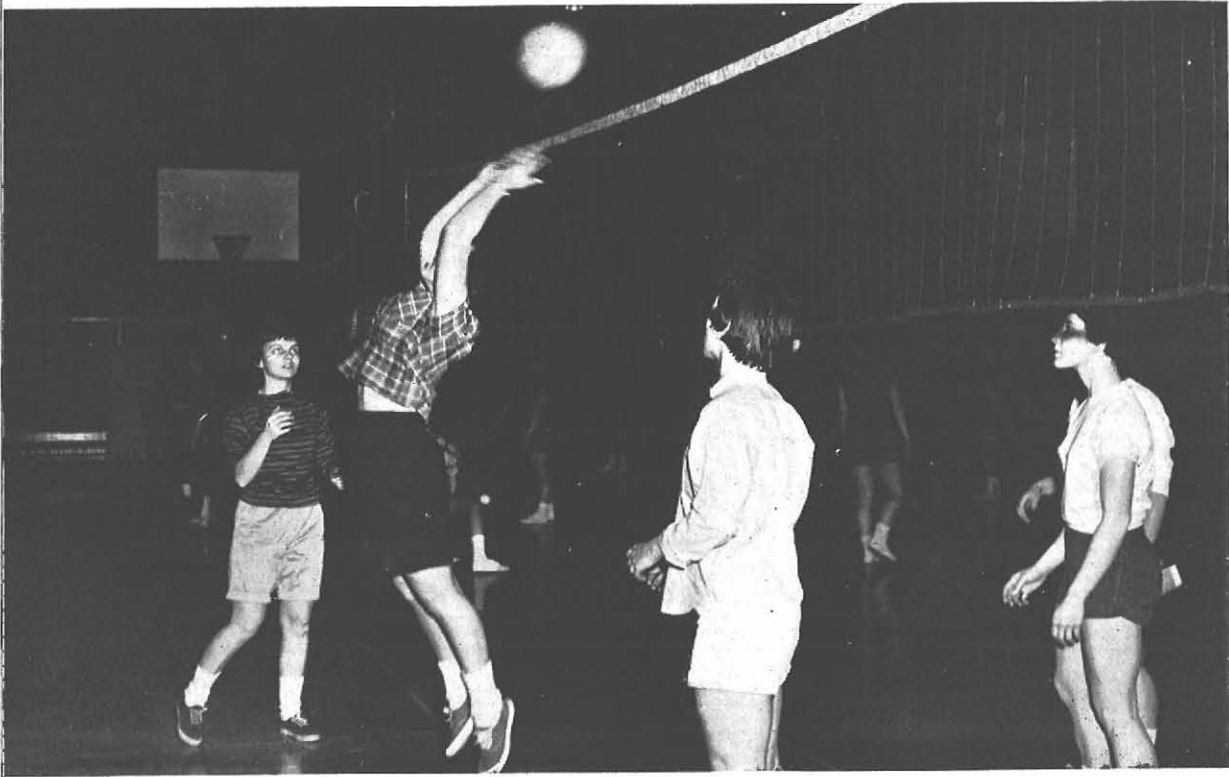
golf

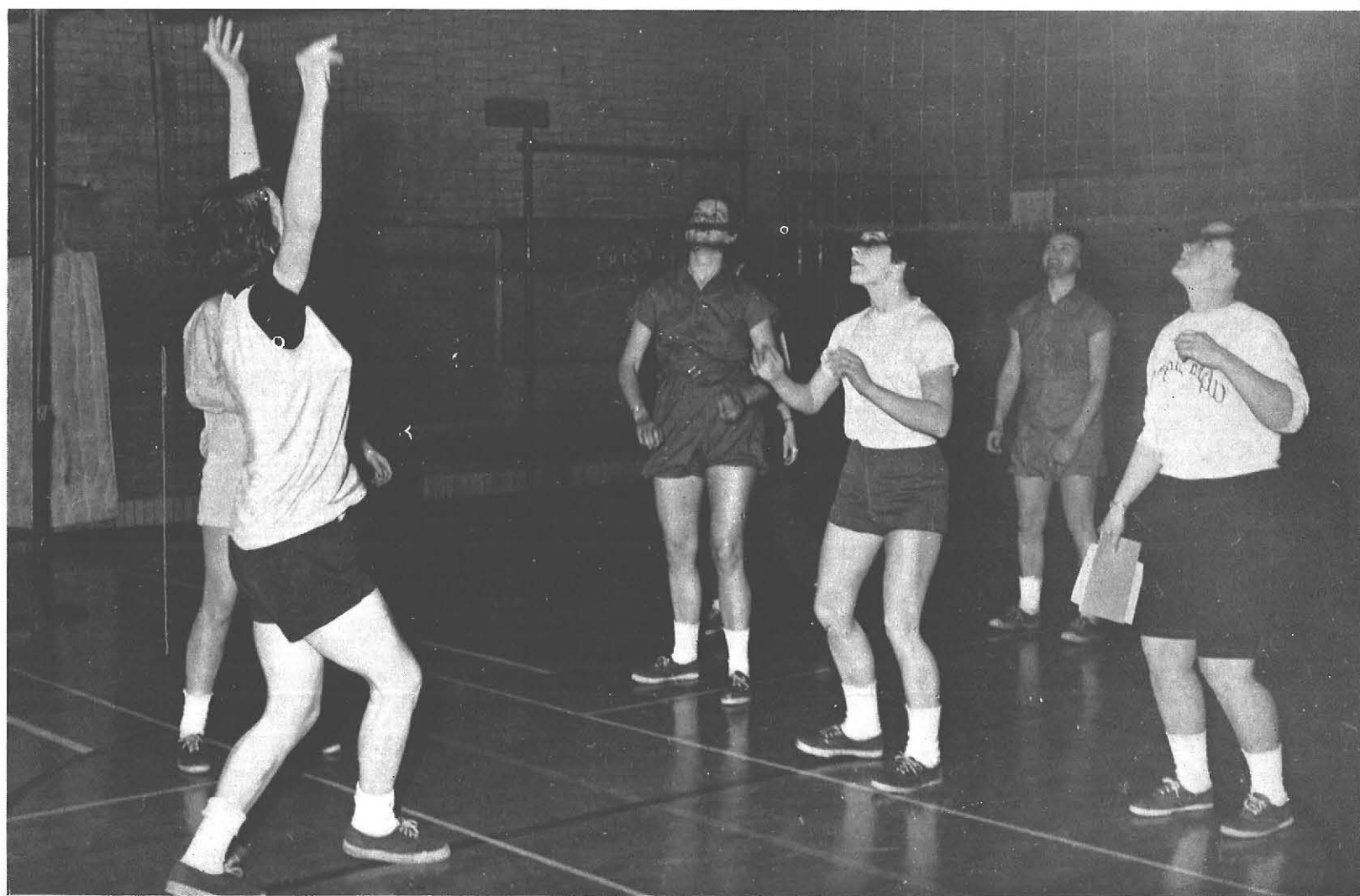


Golf . . . driving and putting skills.
Tennis . . . improving a serve, a return.
Hard work, steady gains, a team working
together.
Swimming . . . speed, strength. An out-
standing team.

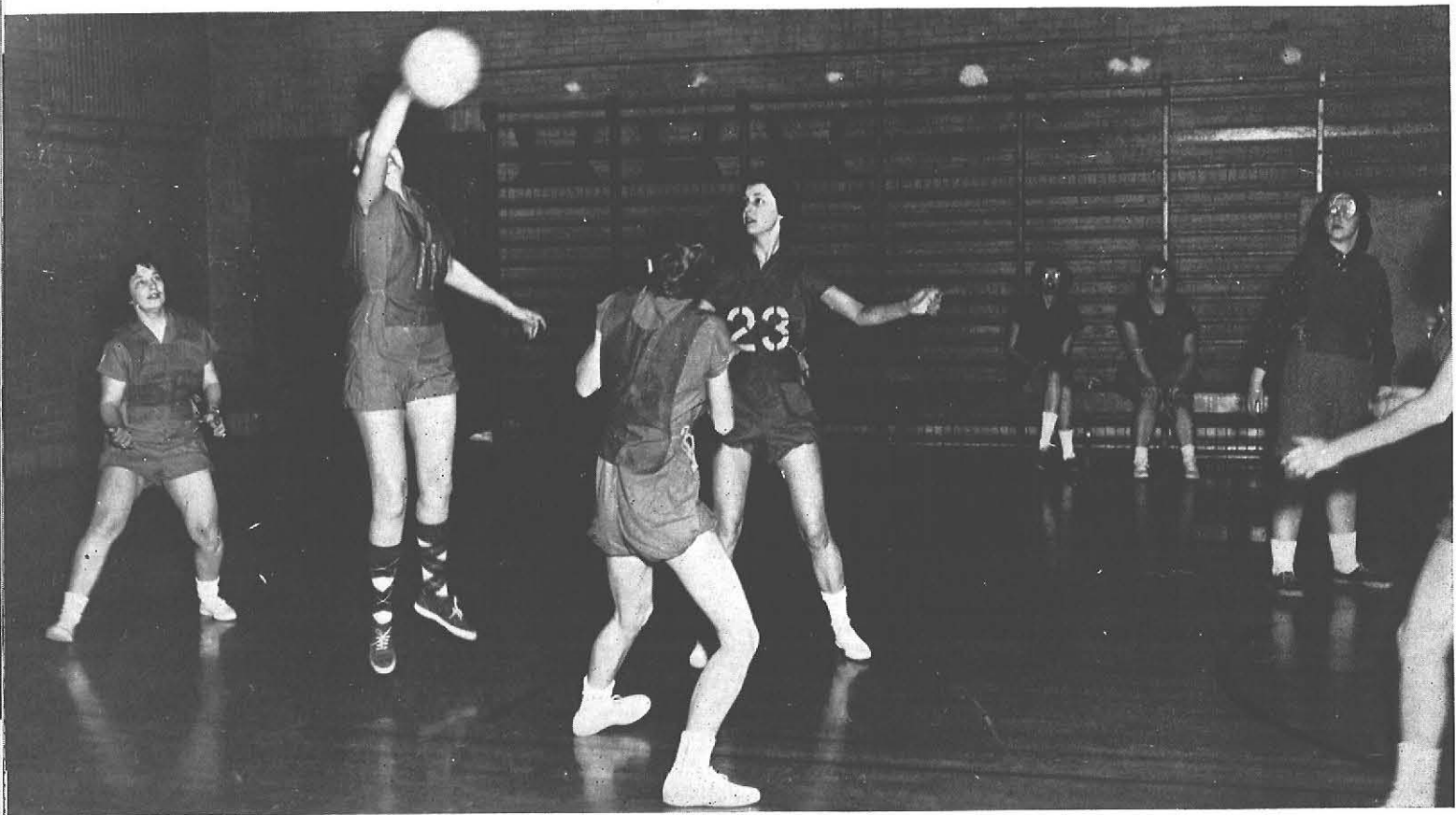


First row: Donald Anderson. Second row: Curt Schultz, John Shanahan, Lester Racz, Silas Manspeaker. Third row: Leonard Hiemenz, Philip Gould, James Lavell, Thomas Maloney, Lawrence Katzman, coach; Richard Arnold, J. Lee Travers.





women's sports



Women's sports . . . cheerleading and the practice and fun that go with it.

Softball techniques, basketball plays, fencing methods, volleyball attacks.

Riding lessons, swimming and life-saving instruction, badminton, table-tennis, golf, bowling, tennis, archery, dancing . . . physical and social education.



canterbury club



First row: Patricia Schoonmaker, Betty Gilbert, Anne Saxton, Donna Parks, Sylvia Emmons. *Second row:* Enid Raine, Norma Swan, Donna Darrow, James McKendrick. *Third row:* Richard Durnin, adviser; Rev. George Easter, chaplain; Monroe Whiting.

lutheran student association



First row: Lois Wetzel, Lois Marvin, secretary; Jane Bauer, Anita Becken, Beverly Muir, Bonnie Kullow, Linda Repp, president; Virginia Thomas. *Second row:* Richard Pratt, treasurer; Rev. W. A. Rowen, chaplain; Paul Homer, adviser.



First row: Margaret Barrett, Paula Neill, Jane Kauffman, Judy Odell, Joan Salli, Dianne Schmuckmier, Joanne Waskey. *Second row:* Jeanette Marino, Loretta Borkowski, Ann Lindenberg, Patricia Walsh, Nancy LaLonde, Mary Fitzgerald, Joan Juszcak, Mary Rose Ali-candro, Mary Ellen Glass, Joy Courtney, Judy Yauchzy, Elizabeth Rozek, Phyllis Horton, Dorothy Duminuco. *Third row:* Josephine Mauri, Rosemary Sabuda, Lucy Silvaroli, Thomas Klier, Daniel Kowalski, Annette Donaruma, Barbara Anne Nowacki, Janet Schmid, Marjorie Moran. *Fourth row:* Marilyn Barno, Joyce Jurczak, Marie Re, Susan Hayes, Nancy Mitrano, Jacqueline Gotti, Joan Kosinski, Joanne Korkowicz, Ann Zappia, Kathleen Murphy, Anton Schwarzmuller, Margaret Wizeman, Aldona Miskinis, Dolores Kudla.

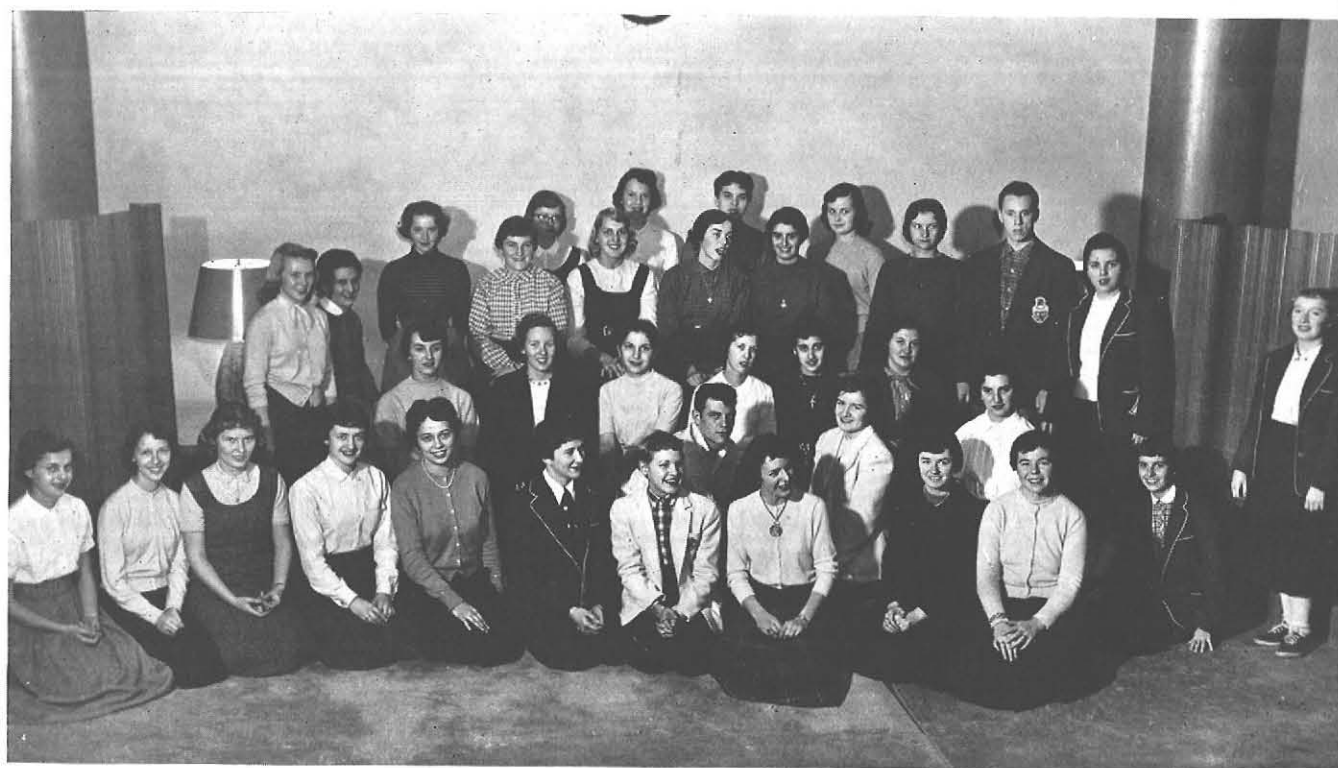


First row: Barbara Zynda, recording secretary; Kenneth Hennig, treasurer; Marjorie Hickey, president; Dorothy Duminuco, corresponding secretary; Catherine Silliman, vice-president. *Second row:* William Thomes, vice-president; Fraser Drew, adviser.

newman club



First row: Gail Reilly, Dolores Russ, Nancy Ann Thorne, Frances Foltasz, Jean McNab, Winifred Cody, Mary Jane VanDyke, Sylvia Kowal, Marie Battaglia, Maureen Lawler, Arline Annunziato. *Second row:* Margaret Hetteric, Rosemary LoDestro, Nancy Rodenbaugh, Rose Pineau, Colleen Buckley, Laurita LoDestro, Jeanette Daccardi. *Third row:* Janice Bloom, Freda Judge, Arline Little, Dorothea Wlodarczyk, Eugene Stepnick, Edward Skudlarek, Elsie Zdzieblo, Lucille Tomasulo, Joanne Millonzi, Helen Sauer, Patricia Traum, Marlene Dietrich, Barbara Turner, Catherine Bucki. *Fourth row:* Thomas Brown, Robert Jennette, Joseph Marino, Margaret Ryan, Shelia Casey, Antoinette Orlando, Mary Ann Padlo, Marie Sepcich, Rita Ferraro, Dorothea Pitarra, Rosemary Costello, Harriet Hanson, Mary Ann Manka, Elaine Abelli, Joseph Angelo. *Fifth row:* Joan Besenfelder, Ellen Mack, Hazel Ensminger, Marcia Kieta, Marianne Misulich, James Moore.



First row: Mary Clare Hungerman, Carol Berry, Theresa Kuwik, Joan Klima, Barbara Ernest, Mary Hendricks, Cynthia Jacobson, Francis Conrad, Joyce Butler, Margaret Murphy, Mary Bonner, Carol Mahoney. *Second row:* Carole Podsiadlo, Margaret McNamara, Mary Mantione, Dolores Ferraro, Marie Curro, Celine Kosciuszko, Mary Ann Vullo, Judy Armstrong. *Third row:* Patricia Kenney, Judy Reinlander, Agnes Freiner, Mary Moore, Elizabeth Donovan, Catherine Whall, Ann Rizzo, Marilyn Ann Wagner, Richard Lautz, Cynthia Hurley, Patricia Cantwell. *Fourth row:* Laura Smith, Carol Campbell, Clementine Soltys, Carol Marie Piver.

hillel





First row: Rita Nagan, Shirley Schwartz, corresponding secretary; Stella Moscowitz, Dolores Heft, Marlene Zack, Sylvia Lieberman, Bonnie Brock, Phyllis Rudd. Second row: Elaine Schwimmer, Sue Goldfarb, Rosalyn Wietzman, Sandra Selig, Barbara Ruben, Leigh Rumack, Enid Zimmerman, recording secretary; Dorene Baltimore, Enid Rimes, Jane Cooperstein, Walter Kohn, adviser; Carolyn Stern, president. Third row: Judith Ackerman, Rabbi Justin Hofmann, Sandra Gordon, Sandra Haas, treasurer; Judith Simon, Joanne Granite, vice-president; Deanne Margolius, Ellen Schiffrin, Barbara Brightman, Frances Lukaczer.

Religion on campus.

Student Christian association — from the quiet of vesper service to the fun and gaiety of State Fair.

Inter-Varsity Christian fellowship — offering a lecture series on religious belief, providing a camp weekend.

Hillel — interpretation of the rich Jewish heritage, a dance.

Newman club — apologetics classes, the beauty of Mass and rosary. Twilight Twirl.

Each faith teaches a pattern of living; each provides a social atmosphere for application of the pattern.



First row: Dorothy Whitten, June Sibble, Muriel Mayer, Katherine Vossler, William Willerth, Marilyn Hile, Beverly Corby. *Second row:* Barbara Corby, Beth Kroecker, Marjorie Hodgins, Marilyn Passmore, Cynthia Miller, Jean Battaglia. *Third row:* Phyllis Clements, Dianne Burnham, Sharon Neva, Robert Allen, Samuel Austin, Frederick Odenwald, Donald Ehat, Louis Mofsie.

inter-varsity
christian fellowship





First row: Jane Welty, Barbara Mabie, Myrna Reynolds, Joan Dean, Jean Kabel Clark, Margaret Anderson, Carol Dean. *Second row:* Audrey Cole, Janet Lau, Barbara Glad, Gail Eveleigh, Carole Nelson, Barbara Rankie, Joyce Kindt, Marjorie Grant. *Third row:* Suzanne McQueen, Elaine Kahler, Esther Stewart, Marjorie Shay, Norman Gustavel, Gay Harter, Sylvia Emmons, Sharlene Bolt, Lucille Cochran, Patricia Geiger, Virginia Beard, Margaret Miller, Jean Naish, Marilyn Fleming, Joan Wood.



First row: Jean Wendel, acting secretary; Patricia Davies, first vice-president; Helen Halstead, treasurer. *Second row:* Anna Maria Rosch, acting treasurer; Joseph Sakumura, chaplain; Ruth Garrett, vice-president.

student
christian
association

ing secre-
vice-presi-
er. Sec-
ch, acting
ra, chap-
resident.

First row: Walter Blind, Daniel Clifford, Hugh Neil. Second row: Charles Mussen, Anthony Tabbi, Dean Zuch, Donald Wildy, president; William Forbes, Francis Reilly. Third row: Joseph Yelich, Lawrence Beebe, Joseph Di Pasquale, John McRae, adviser; Edouard Koeppel, Kurt Legait, Gaetano Nasci.



sigma upsilon



tion



First row: Mae Costigalia, Barbara Jakiel, Tanya Bellomo. Second row: Mary Jane Wickham, treasurer; Patricia Fillipponi, Hallie Smith, president; Jean Fidd, Patricia Davies, Dana Alexander, Suno Go. Third row: Mary Lou Schmitt, Joan Lautensack, Dolores Adams, corresponding secretary; Dianne Schmuckmier, Ruth Garrett, vice-president.

phi upsilon omicron



First row: Ronald Devito, treasurer; Gladys Wreszin, Mary Lou Schmitt. Second row: Annjeanette Hanner, Mary Lou Coleman, secretary; Esther Ceterski, president; Harriet Brot, Hallie Smith, Patricia Davies, vice-president; Helen Halstead. Third row: Daniel Clifford, Daniel Idzik, Richard Lautz, Edward Zwick, Gordon Klopf, adviser; Joan Haley, Howard Bethel.

alpha

Alpha tapping . . . darkness, a light, a student is accepted into Alpha. His leadership is recognized — there's joy in recognition.

Kappa Delta Pi — education . . . Phi Upsilon Omicron — home economics . . . Epsilon Pi Tau — industrial arts.

They honor . . . and encourage qualities that call for honor.



First row: Norma Mattci, Judy Armstrong, Barbara Zynda, Janice Bloom, Elizabeth Olson, Doris VanAllen. *Second row:* Patricia Lamb, Cynthia Hurley, Diane Hall, Rochelle Cantor, Winifred Macnish, Mary Owens, Carole Podsiadlo. *Third row:* Joyce Staudt, Alice Lyman, Ruth Allbert, Paula Caplan, Marian Grover, Barbara Rochester. *Fourth row:* Rhoda Levine, Edward Zwick, Doreen Pelletier, Joseph DiPasquale, Arnold Facklam, Norman Gustavel, William Miller, Lynn Winter, Joan Staub, Barbara Sperling, Richard Lautz, Nancy Sweet, Rita Rosati, Rosanne Perry, Janet Sutter.

kappa delta pi



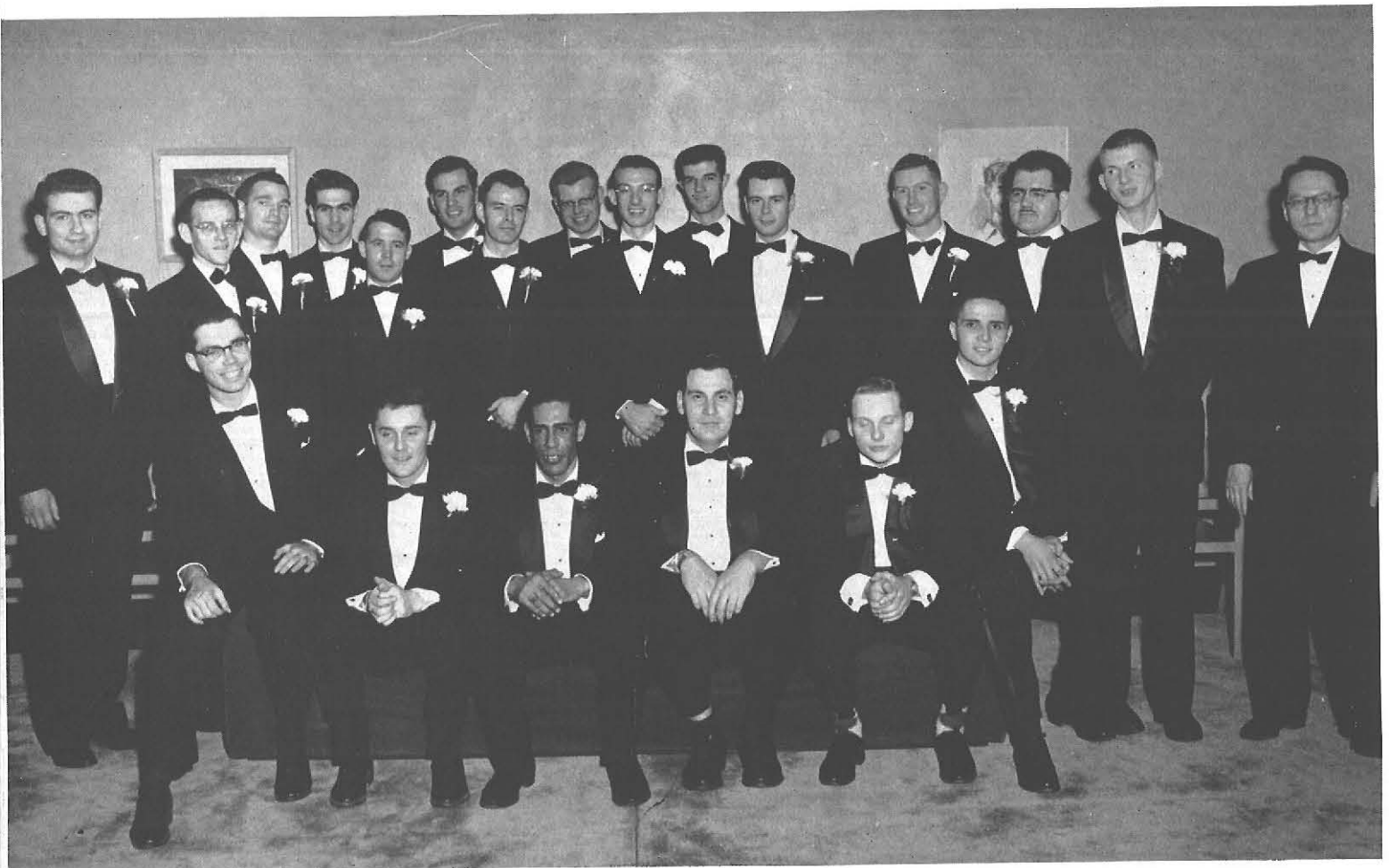
First row: Lorraine Meinke, Marilyn Koerber, Mary Lou Schmitt, Patricia O'Leary, Barbara Ernst, Joan Yates, Anna Maria Rosch, Astra Ziverss, Joan Dean, Ruth Garrett, Theresa Czarnecki. *Second row:* Patricia Harris, Mary Ann Cooke, Judith Stern, Louise Whittaker, Nancy Apa, Carol Ann Bettcher, Anne Farrell, Ada Carpenter, Patricia Davies, Wilma Benjamin, Mary Ann Ziblut. *Third row:* James Riendeau, George Klein, Violet Hoffman, Arline Little, Mary Ann Malecki, Mary Ann Manka, Gayle Foster, Nancy Leinbach, Ruth Gritzke, Jane Gerken, Donna Johnson, Dianne Burnham, Donna Klumpp, Joan Metselaar.

Gladys Wreszin, *president*; Ruth Sugarman, *adviser*; Helen Halstead, *historian*; Doris Frey, *secretary*.



epsilon pi tau

First row: Edward Zwick, Franklin Webster, treasurer; Mohammed Bubshait, Edward Fink, Donald Stebbins vice-president; Arnold Facklam, president. Second row: Lester Bragg, Jack Walters, Gordon Watt, Edward Burt, Louis Nichols, Donald Weaver, Bruce Nicoll, Horace Foley, Robert Kaufman, secretary; Kenneth Brown, adviser. Third row: William Farrell, Thomas Friedman, Norman Symington, Alan McMillen, Robert Grandits.



First row: Nancy Svensson, Carole Wilkinson, corresponding secretary; Gretchen VanDerhoof, Suzanne Stark, co-chairman; Eleanor Kahle. Second row: Jean Acenowr, recording secretary; Joanne Higbie, Beverly Price, Jean Zalenski, Robert Weigand, co-chairman. Third row: Celine Kosciuszko, Phyllis Levine, Richard, Wolf, Robert Allen, Robert Fox, John Evans, Joseph Bolinsky, Joseph Marino, Barbara Karpio, Gaetano Nasci, treasurer.



art education club





First row: Virginia Beard, *secretary*; Elizabeth Washington, Clayton Berlinghoff, *president*; Janet Ledlie, *vice-president*; Barbara Brimont, Elaine Rockman, *treasurer*; Donna Johnson. Second row: Kathryn Childress, Mary Jane VanDyke, Joan Heintz, Shirley Mason, Dorothea Wlodarczyk, Esther Silverman, Rose Pineau, Jean Clark. Third row: William Rauch, Lola Skidmore, Laurita Lodestro, Herbert Rowswell, Marilyn Nadin, Jane Tooley, Joan Droit, Kay Vanderhoff, Rose Marie Russick, George Sherrie, *adviser*, Diane Hall.



future
teachers
of america

early childhood education club

Membership in a professional club provides experiences in a field of professional interest.

Meetings, committees, notes in an organization box.

Education and fun, too.

First row: Anne Tauriello, Lela Harness, Lorraine Julian, Anne Dempsey. Second row: Ellen Mack, Louise Whittaker, Helene Schultz, vice-president; Jean McNab, Sandra Philblad, Rochelle Cantor, Virginia Beard, treasurer. Second row: Carol Schultz, Margaret Wizeman, Astra Ziverss, Katherine Shoup, president; Jane Wiedemann, secretary; Evelyn Jacobs.





international council for exceptional children

First row: Virginia Thomas, Rosemary Sabuda, treasurer; Jean Bancroft, secretary. Second row: Leon Barsky, president; James Strauch, Mary Ann Cooke, Patricia Harris, Kathleen O'Rourke, Judith Stern, vice-president; Donald McDonald, Evanne Ravins, Murray Bloustein, adviser. Third row: Marlene Hession, Grace Tennant, Donna Johnson, Dianne Burnham, Joanne Blanchard, Phyllis Levine, Loretta Borkowski.





First row: Dolores Kudla, Esther Stewart, Annette Roth, Annette Hagen, Dorothea Wlodarczyk, Patricia Bell. *Second row:* Dianne Schmuckmier, Marian Grover, Kaloma Thompson, Ellen Ross, Phyllis Rudd, Aldona Miskinis, Donna Darrow, Jo Howard, Jean Fidd. *Third row:* Jane Allen, Alice Wolfe, Virginia Cardot, Beverly Hilton, Margaret McNamara, Judith Yauchzy, June Sibble, Carol Hahn. *Fourth row:* Rosaline Tabone, Marian Seaman, Marjorie Shay, Carol Gangnagel, Marilyn Dienstbier, Marjorie Hodgins, Jane Carr, Marjorie Grant, Dorothy Mellwaine, Yvonne Castellion, Margaret Farrell, Marjorie Moran, Maureen Sutor, Dawne Trombley.

home economics club

First row: Sandra Adams, Ada Carpenter, Nancy Raziano, Priscilla Watson, Shirley Sherman, *secretary*; Roberta Snyder, *president*; Nancy Apa, *vice-president*; Suzanne McQueen, Patricia Fillipponi, Jeanette Halsey, Tanya Bellomo, Sandra Selig, Winifred Cody, Barbara Tucker, Jean Underwood, Barbara Ann Connor, Nancy Gibson. *Third row:* Barbara Ann Miller, Elaine Kahler, Phyllis Horton, Edith Batchelder, *adviser*; Barbara Hoffmann, Barbara Schwigler, Agnes Batt, Annette Mancusco, Ann Howard, Gloria Ryerse, Lynn Griffin.





First row: Nancy Nissen, Helen Sauer, Cleo Beeman, William Willerth, treasurer; Lawrence Beebe, secretary; Kurt Legait, vice-president; Joan Staub, president; Joan Yates, Maureen Lawler, James Moore. Second row: Norbert Gurbacki, Lowell Smith, Lois Smith, Ruth Rose, Charles Mussen, Nancy Thorne, Freda Judge, Daniel Kowalski, Thomas Klier.

science club

international relations club

Joan Britt, Edmund Brown, *adviser*; Shirley Mason, Jenny Constantino, *chairman*; Monica Sander, Lawrence Beebe.



industrial arts club

First row: Rodney Van Housen, Gary Runckel, James Moore, Robert Winters, Alec McAllister, Thomas Friedman, *vice-president*; Edward Burt, Charles Fellner, *secretary*; Norman Symington, *president*. *Second row:* Samuel Tuttolomondo, Anthony Tona, Edward Novak, Donald Weaver, Paul Terhorst, Charles Schwender, James Burns, Hugh Smith. *Third row:* Stanley Zimmerman, Timothy Malone, Michael Pirowskin, Richard Krug, Thomas Malone, Daniel Kowalski, Gordon Anderson, Joseph Kauffman, John Faliszewski, John Szczypkowski, Howard Meyers, Howard Meyer, *adviser*. *Fourth row:* Edward Ahrens, Thaddeus Zajac, Thomas Klier, Robert Jones, David Timm.



veterans club

First row: Raymond Johnston, Nicholas Chickos, Anthony Queeno, Robert McClellan. Second row: Ralph Slade, corresponding secretary; Steven Gittler, adviser; Norman Connelly, president; Milton Conomos, first vice-president; George Kontos, Fred Chapman, second vice-president; Anthony Alberti. Third row: Ronald DePentu, Howard Meyers, Willard Schum, Jack Fawcett, Bruce Nicoll, William Keller, Francis Matthews, Samuel Giordano, Alex Craig, James Wells, Alfred Heinen, treasurer; William Hazelton, August Hein, Cornelius Mahoney.





First row: Arthur Hadley, Jacqueline Rush, Audrey Grinter, *treasurer*; Barbara Olson, Nancy Raziano, Ellen Schiffrin, Joanne Higbie, H. D. Stark, Jeanne Bermann, Barbara Cordes, John Peters, Susan Rosenberger, William Keller. *Second row:* Janet Kramer, Nicholas Macrides, *president*; Ilse Doerler, *secretary*; Gail Reilly, Mary Tachco, Gertrude Mank, Joanne Blaha, Elizabeth O'Shea, Donna Delahunt, Sue Goldfarb, Delphine Szafranski. *Third row:* Ada Purdy, Carole Wittner, Joan Ormsby, Geraldine Marapese, Ann Scheer, Donna Dahar, Carol Gallo, Janet Lockwood, Gloria Upton, Helen King, Barbara Roesch, William Hoffman, Cynthia Monroe, Joseph Merlo, Thomas Maloney, Howard Meyers.

art kraft klub

OK-AKK . . . and the poster goes up.
 Originality and creativity in admission and in social
 functions . . . unusual letters and a costume ball.
 Scholarship award . . . parties and fun.
 Art Kraft Klub.

inter-fraternity

First row: Robert Weigand, Willard Schum, secretary-treasurer; Richard Lallmang, president; Robert Kersch, corresponding secretary. Second row: Steven Gittler, adviser; David Hammond, Leland Gage, Allan Jones, Howard Bethel, George Clever.



inter-sorority

First row: Dorothy Duminuco, Barbara Ernst, treasurer; Janet Kramer, corresponding secretary; Judy Armstrong, president; Sylvia Solkoff, recording secretary; Lenore Kemp, adviser. Second row: Judy Dingeldey, Joanne Smith, Dorothea Wlodar, Carole Wilkinson, Joyce Hiscutt, Lois Pudney, Geraldine Marapese.





First row: Barbara Zynda, Fay Ellen Mickel, Jean Moksiki, Lou Ann Doyle, Patricia Cantwell, Rose Marie Aquino, Joan Rindfleish, Janet MacFarlane. Second row: Valerie Severance, assistant treasurer; Sally Henry, vice-president; Joan Valasek, Sharon Dobrovolsky, Cynthia Hurley, treasurer; Ruth Albert, Kathleen Ryan, Jo Ann Twist, recording secretary; Mary Lou Marzolf, Marlene Garfield, president; May Frankenbach, Catherine Silliman, Jeanette Elek. Third row: Marilyn Brauch, Mary Hendricks, Joan Kosinski, Marlene Dietrich, Alice Wylegala, Carol Timm, Jean Acenowr, Sallie Smith, Sylvia Kowal. Fourth row: Doris Van Allen, Sharon Marzolf, Patricia Bjorklund, Judith Millspaugh, Dorothy Hayn, Marcia Hicks, Susanne Erckert, Joan Wood, Donna Schultz, Judy Dingeldey, Judy Armstrong, Joanne Taylor, Doris LaRosa.

A busy day, the Alpha Sig's . . . with Fireman's Ball publicity, seminar in the library, a committee meeting for Jacket day. There's lunch with other girls of the red and white, coffee after a stiff exam . . . always friendship.

With pride she is an Alpha Sig.



Rind-
Sharon
M. Mar-
adricks,
Van
Donna

with
the
ocket
of the

alpha sigma pi



delta kappa

First row: Mercer Guerry, David Maul, Anthony Tabbi, Alfred Bean. *Second row:* Ronald Meyers, Daniel Clifford, Howard Bethel, president; Edward Kostuk, vice-president; Gerald Duffy, treasurer; Robert Turgeon. *Third row:* Joseph Dipasquale, David Elmer, Howard Luff, Kenneth Hennig, James Coppola, Donald MacLeod, David Hammond, Stanley Zimmerman, Charles Mussen, James Rauhe, Rodney Van Housen. *Fourth row:* Eugene Lewis, Donald Wood, Raymond Haines, Kenneth Macdonald, Dennis Matteson, John Peters, Robert Lamparter, Martin Camarata, recording secretary; Robert Kirchmyer, corresponding secretary; Robert Kersch, Charles Torch, Marshall Chazen, Ronald Devito, Gerald Dalven, Bradley Smith, William Hoffman, James Aprile.





The triangle pin, the maroon and white jacket . . .
and he's Delta Kappa, a campus leader.

Crystal Ball and Community Chest, Student Direc-
tory, Kappa Kapers . . . spirit in all he does.

Fellowship and leadership running through his cam-
pus fraternity life . . . he's Delta Kappa. And his is real
brotherhood.





alpha tau sigma



First row: Colleen Buckley, Hazel Joslin, Margaret Buehlmann, Marilyn Olear, Henrietta Moshammer. *Second row:* Anne McDowell, *president*; Martha Hasner, *corresponding secretary*; Janet LaSpisa, Jean Pierotti, Joanne Smith, *Vice-president*; Mary Jane Scrymgeour, Elaine Jones, *recording secretary*; Susann Kenline, *treasurer*; Mary Jan Van Dyke, Jane Welty, Dorothea Wlodar. *Third row:* Marie Egnsteiner, Laurita Lodestro, Dolores Crapsi, Marcia Schultz, Carolyn Rumberger, Cecilia Hale, Patricia Lamb. *Fourth row:* Jean McNab, Ann Williams, Virginia Sly, Nancy Miller, Lola Powers, Doris Heidenreich, Shirley Brisk, Betty Lundgren, Shelia Casey, Arlene Layer.

She may be preparing a bulletin board for the fifth grade, tacking up Tau Dreamtime posters, soliciting toys for those boys and girls in Kentucky . . . or perhaps she is developing the theme for sorority-interest party . . . Her yellow jacket is symbolic of Alpha Tau Sigma.

For the non-sorority girl, the Luella Chapman award. Striving for new ideas . . . a holly corsage sale . . . cherishing the old traditions, too.

The Alpha Tau.



psi beta phi



He wears the familiar jacket, works on a Moving-up day float, is active in inter-fraternity sports.

A fall night, with students and spirit . . . Psi Phi burns the jinx.

Psi Phi . . . a get-together in the Snack Bar after meetings, publicity for Club Collegiate and plans for Miss Collegiate.

He's Psi Phi . . . a member of State's oldest fraternity.

First row: George Binner, recording secretary; James Riendeau, treasurer; Stephen Kovac, vice-president; James McKendrick, president. Second row: George Clever, Willard Schum, George Kiener, Robert Wiegand, Leonard Kaplan, Richard Mazur, George Klein.





First row: Harriet Brott, Dorothy Duminuco, Gail Stephenson, Roberta Wray, Joan Schroeder, Paula Neill, Anna Maria Rosch, Roberta Horn, Carolyn White. Second row: Lois Pudney, Barbara Jakiel, corresponding secretary; Diane Reinecke, second vice-president; Clara Benedetti, first vice-president; Dolores Adams, president; Mary Callahan, treasurer; Virginia Abel, recording secretary; June Blatt, Nancy Slinde, Dianne Schmuckmier, Ann Zappia. Third row: Joan Haley, Joy Yondt, Elizabeth Sexsmith, Emily Bradshaw, Sariann Morris, Cynthia Monroe, Beverly McNett, Phyllis DeBole, Joan Staub, Muriel Kay, Carole Smith, Nancy Potter, Joanne Korkowicz, Barbara Miller, Leila Haywood. Fourth row: Donna Gottung, Janet Weber, Margaret Barrett, Dorothy Schutrum, Maria George, Rosemary Tenney, Anna Kavulich, Phyllis Horton, Cleo Beeman, Nancy Nissen, Nancy Lagowski, Sally Leman, Joan Hoffman, Alice Lander, Donna Delahunt, Linda Sutton, Elaine Kahler, Beverly Zucker, Elma Hardy, Mary Lou Schmitt.

delta sigma upsilon

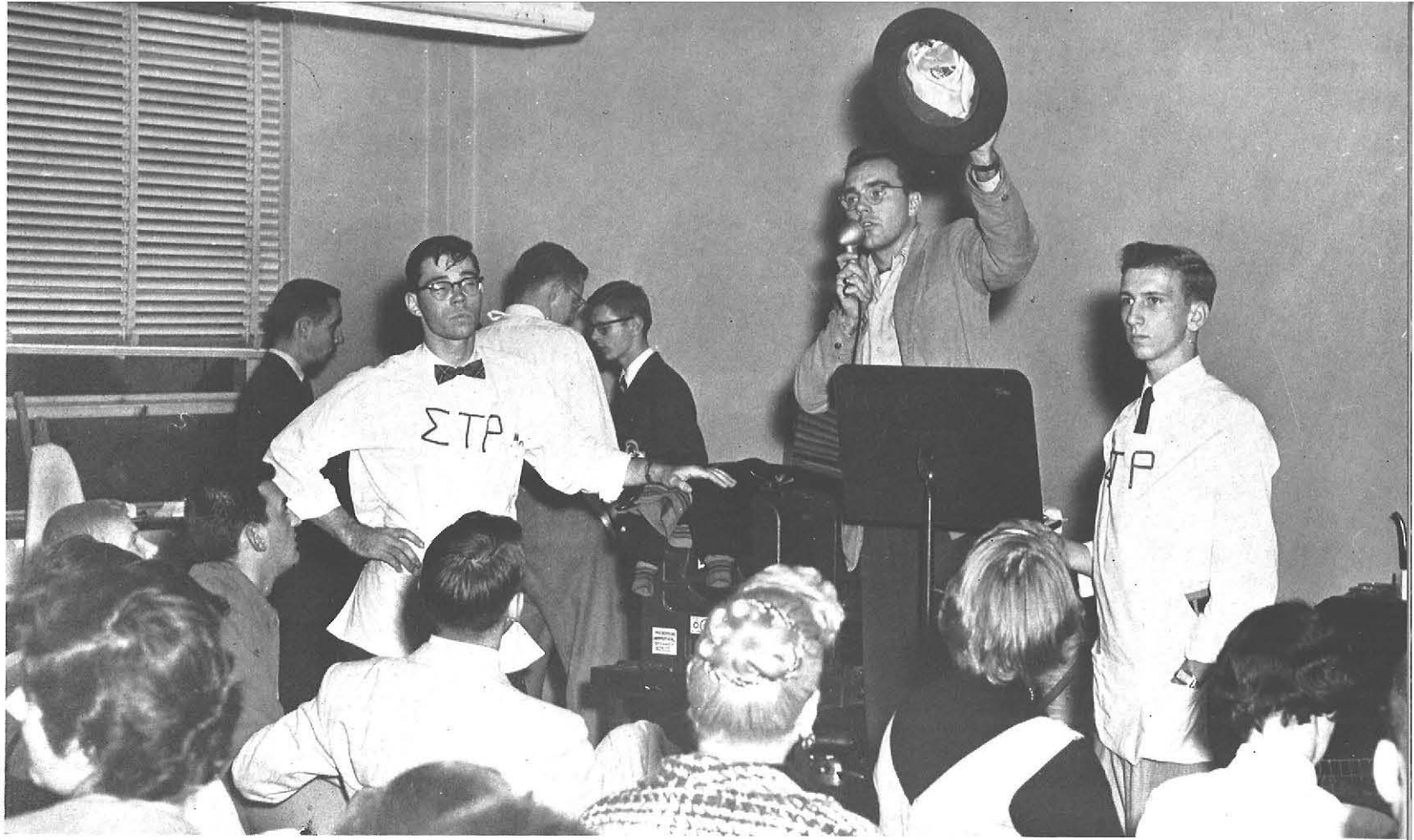
Her sorority year is full . . . plans to help a hospital patient, gala Emerald Eve, State Fair and Moving-up day.
Delta Sigma Upsilon . . . a green jacket and a smile.



sigma tau rho

First row: Paul Manke, secretary; Anthony Hoppa, treasurer; Donald Stebbins, vice-president; Edward Zwick, president; J. Robert Levesque, Ronald Thrun, Sam Maisano, Norman Symington. Second row: William Giles, James Camann, William Blizard, Norman Plezia, Anton Schwarzmuller, Norman Gustavel, Thomas Ghent, Jan Arbiter, Richard Lautz. Third row: George Weinfurtner, Paul Krauss, William Thomes, Leland Gage, Paul Terhorst, Michael Eberwein, Lester Bragg, Charles Wolffer, Albert Paulter, Allan Jones, Robert Hopkins, Richard Lallmang, Lowell Smith, Albert Burns.

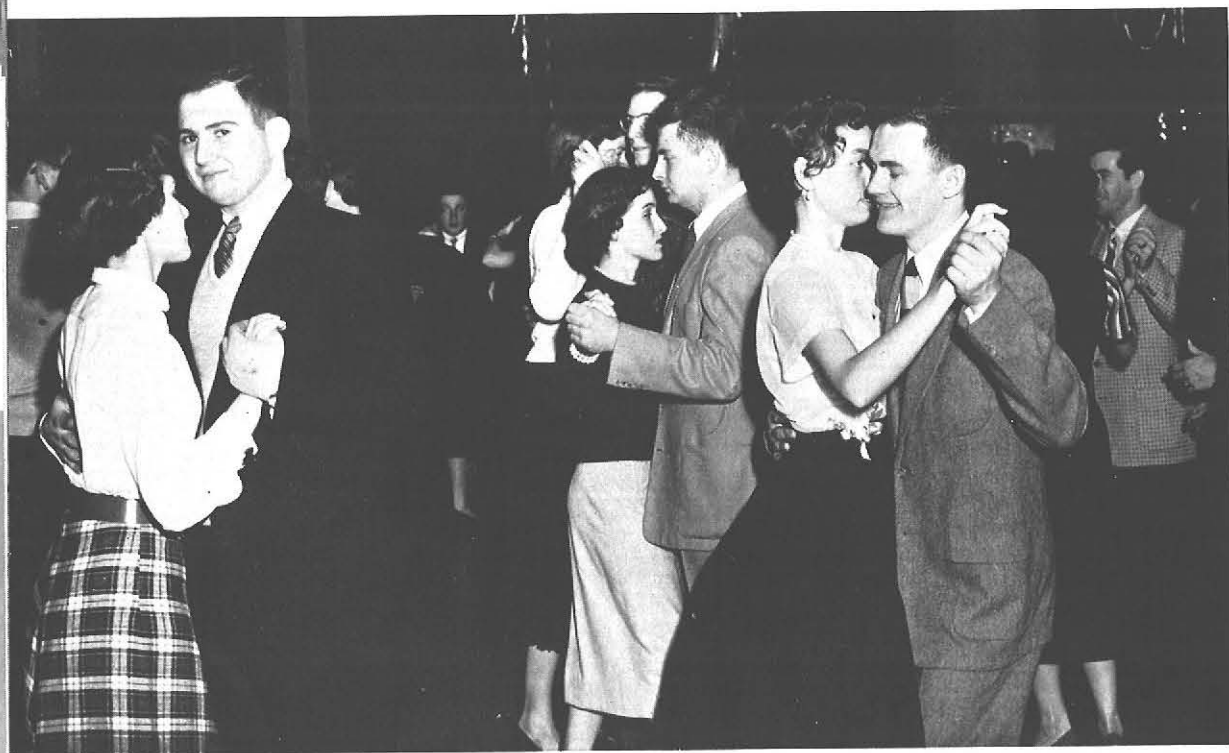


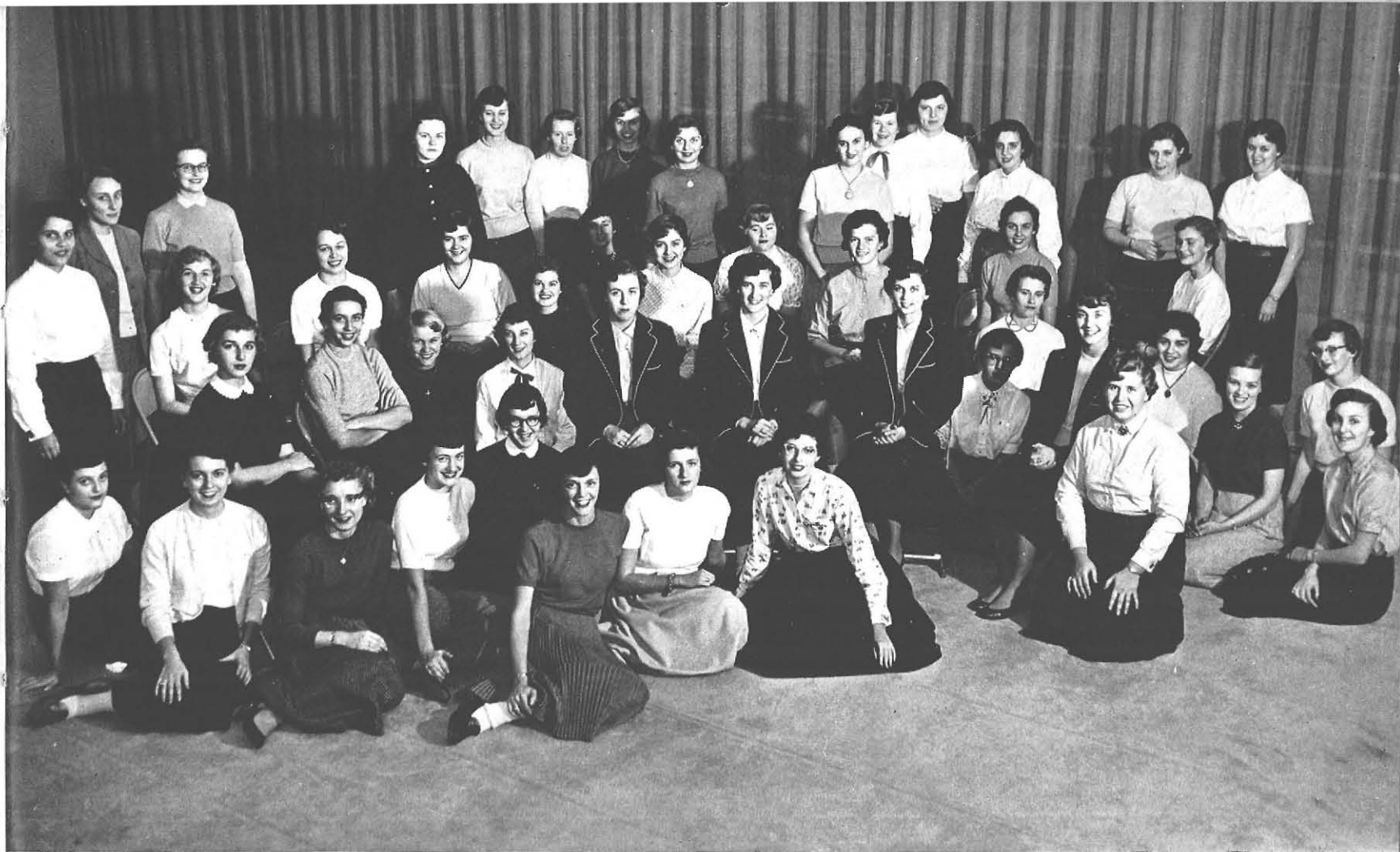


He's Sig Tau.
He's the varied activities . . . White
Elephant sale, social calendar, the tradi-
tional White Rose dance.
He's the blue jacket.
And he's loyalty . . . and fellowship.



Wearing the navy blue . . . she reflects the pride and fellowship of Pi Kappa Rho.
Mardi Gras and King Rex, rushing, pledging, Jacket day, classes, study, work . . . she's all these things.





First row: Lois Will, Nancy Molter, Linda Repp, Joan Klima, Arlene Newell, Eileen Dickson, Johanna Wagner, Cynthia Denny, Helen Szczesniak. *Second row:* Patricia Geiger, JoAnne Reeb, Jane Wiedemann, Margaret Matheson, Ruth Rose, *treasurer*; Margaret Miller, *president*; Agleia Economou, *vice-president*; Janet Lau, Marlene Rahuba, Carole Podsiadlo, *secretary*; Caryl Vertalino, Suzanne Braun, Lois Marvin, Mary Ellen Barth. *Third row:* Marilyn Koerber, Barbara Ernst, Joyce Hiscutt, Barbara Bottomley, Rhonda Ruocco, Patricia O'Leary, Rose Russick, June Fischer, Margaret Woodall, Ruth Garrett. *Fourth row:* Elizabeth Blakemore, Anne Saenger, *adviser*; Donna Klumpp, Ruth Voetsch, Teresa Smutko, Carol Dean, Betty Jane Strodel, Frances Manka, Jean Wendel, Jean Naish, Mary Kirsch, Marilyn Flemming, Joan Dean, Carolyn Kreuger.

pi kappa rho



Sigma Lambda Phi.
Service to campus and community . . . Heart
Fund, library work, books and toys for Children's
hospital.
She wears royal blue and white . . . a jacket
and a hat.
Inter-sorority meetings and Jacket day, pledge
pin, rushing.
Fun and work in Moving-up day, State Fair,
her own Columbus Capers.
Goals to meet . . . scholarship to achieve . . . sis-
terhood to live.



sigma lambda phi

First row: Sylvia Solkoff, president; Mary Anne Katz, vice-president; Carole Partridge, Carole Wilkinson, secretary. Second row: Marlene Zack, Lenore Kemp, adviser; Phyllis Levine, Suzanne Stark, Helen Halstead, Joyce Rogers.





First row: Deborah Cook, Janet Lockwood, Sandra Haas, Patricia Miller, Ada Purdy, Nancy Raziano. *Second row:* Sandra Ward, Audrey Grinter, Joan Cotter, Janet Corrigan, Janet Kramer, Linda Joslin, Ann Mutschler, Nancy LaLonde, Marian Carroll, *adviser*. *Third row:* Jane Cooperstein, Geraldine Marapese, Helen Cutaiar, *treasurer*; Barbara Cordes, Sally Ann Barry, Lorraine Weaver, *corresponding secretary*; Annjeanette Hanner, *president*; Mary Lou Lynch, *vice president*. *Fourth row:* Norman Mattei, Jacqueline Rush, Edith Lapham, Joan Kranock, Elizabeth Olson, Lorraine DeMarco, Patricia Wellech, Roxanne Root, Joan Orsmby, Joyce Staudt, Marilyn Cadwallader, Gail Reilly. *Fifth row:* Susan Van Buren, Susan Rosenberger, Carole Delmore, Dolores Russ, Ginevra Evans, Velma Boyles, Judith Odell, Jane Kauffman, Lynn Winter, Alice Lyman, Joan Gardner, Barbara Payne.

sigma sigma



Ward,
ad-
erraine
Mattei,
Oram-
Dolores
eye.

A girl in white and violet . . . fun and laughter, a party, a hamburger with friends in the Snack Bar . . . a Sigma.

They are busy days, with work and fun. She feels the richness of her Sigma Sigma life.





Those with experience
guided him . . . and with wis-
dom they led him.

Their work was for the
student.

And he came to know him-
self . . . and he grew in mind
and spirit.

He became rich through
administrative life.

ADMINISTRATION



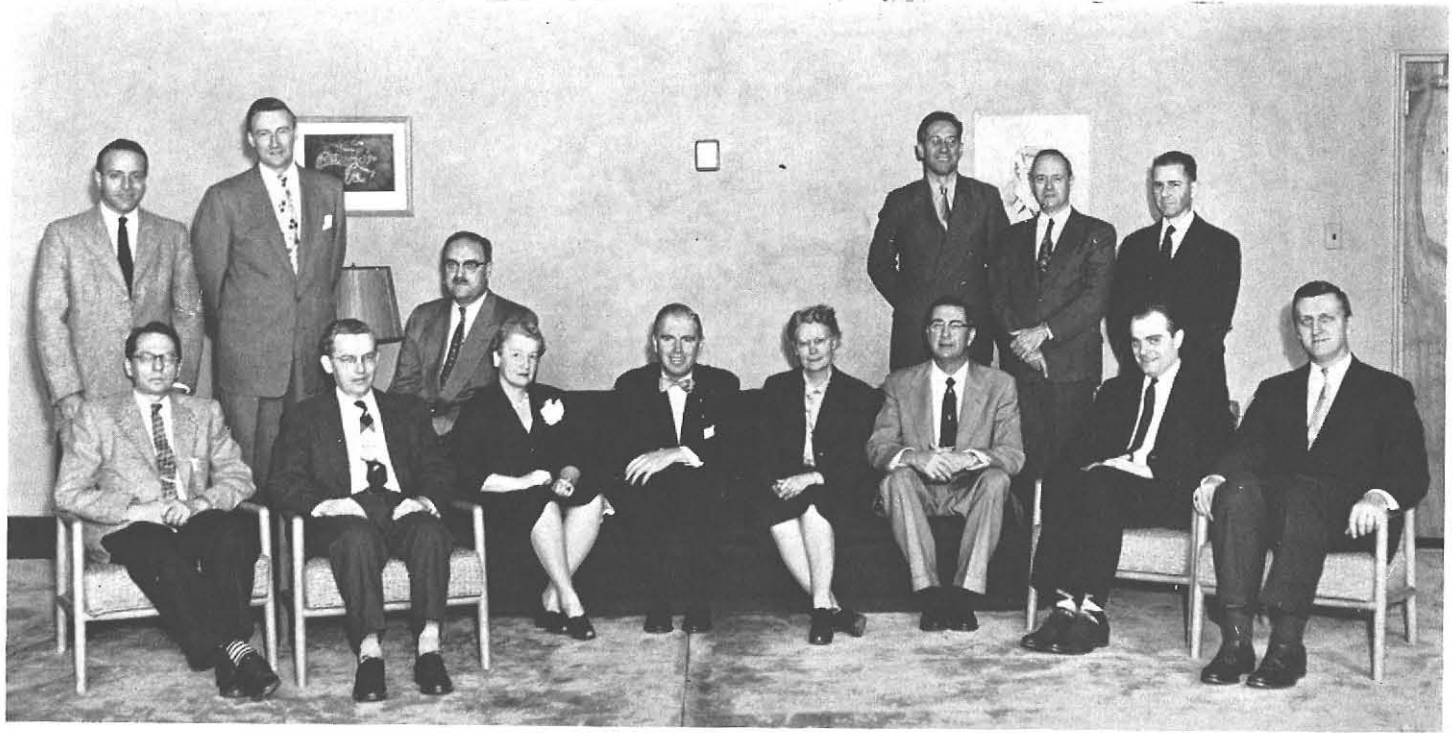
faculty personnel

First row: Kathyryne Whittemore, Clarence Cook, Catherine English, Martin Fried. *Second row:* Pearson Bailey, Julius Hubler, Anna Burrell, John Fontana, Ellsworth Russell.



student personnel council

First row: Daniel Idzik, Kathryn Harries, Lorraine Lange, Anna Martorana, Ruth Buddenhagen, Richard Brown, Lorraine Raps. *Second row:* Houston Robison, James Spence, Howard Sengbusch, Ralph Horn, Gordon Klopff, Nicholas Carriero, John Urban, Anne Zierleyn.



First row: Kenneth Brown, Allen Sexton, Margaret Grant, Harvey Rice, Kathyne Whittemore, Ralph Horn, Gordon Klopff, Robert MacVittie. *Second row:* Horace Mann, James Spence, Richard Lampkin, Stanley Czurlis, Robert Albright, Harold Steffen.

college cabinet

First row: Lorraine Lange, Allen Sexton. *Second row:* John McRae, Charles Messner, James Spence.



public relations

First row: Kenneth Brown, Margaret Grant, Joseph Wincenc, Reuben Ebert, John Urban. *Second row:* Horace Mann, Arthur Bradford, Rudolph Cherkauer, Charles Messner, Stanley Czurles.



First row: Robert Albright, Frederick Hollister, Gordon Klopff, Ralph Horn, Katheryne Whittemore. *Second row:* Robert MacVittie, Mazie Wagner, D. Paul Smay.



educational
policies council



First row: Mildred Stalbird, Mazie Wagner, Berdena Dolberg, Lillian McKenneth, Loraine Raps, June Truesdale. Second row: Joseph Cannamela, Margaret Knueppel, Madeline Turner, Steven Gittler, Anne Zierleyn, Kathryn Harries, Gordon Klopf, James Spence, George Sherric.

student personnel staff



A working staff.
 Student Personnel . . . committees of
 students and faculty on college camp, con-
 vocations, student activities, financial aid,
 housing, conduct, publications.
 Administrative co-operation.



First row: Robert Albright, Stanley Czurles, Horace Mann, John Urban, Margaret Grant, Ralph Horn.
Second row: John Fontana, Frederick Hollister, Cecil Rodney, Kenneth Brown, Arthur Bradford, Joseph Wincenc.

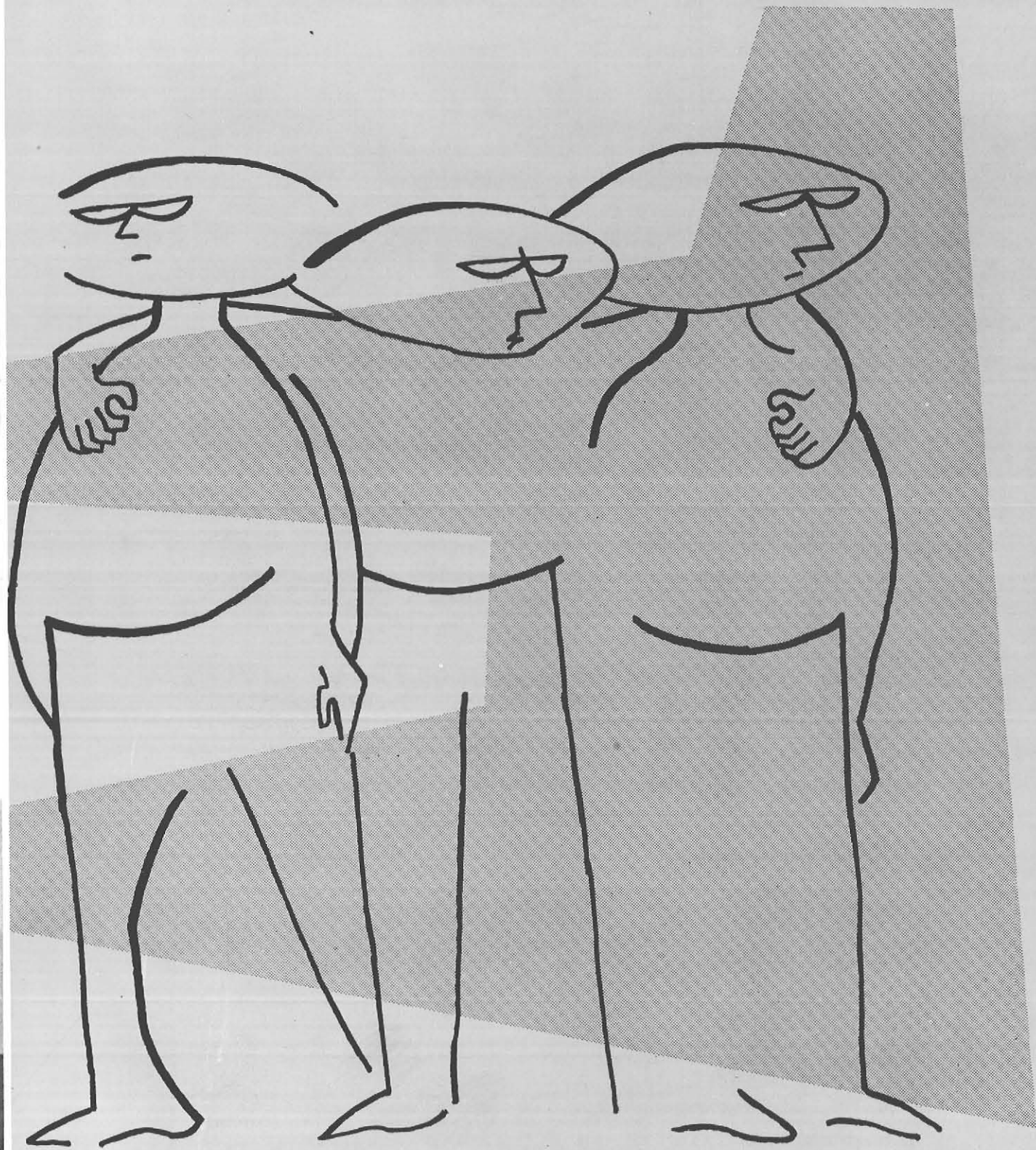
extra sessions





harvey m. rice

The college president.
Routine tasks and decisions of consequence.
Recognizing a familiar face at Dean's Tea . . . seeing new faces,
new smiles . . . shaking hands.
Being appreciated, not being appreciated.
Attending a meeting, a convocation, a dinner . . . being asked to
say a few words . . . hurrying from office to office, person to person.
Standing behind a desk, sitting at a desk . . . calendars, memos,
pens, ink, a clock.
Knowing many students, not knowing many.
With dignity, with a familiar smile, with enthusiasm, President
Rice symbolizes his college.



CLASSES

He was a senior, and his were the memories . . . the junior, the sophomore, the freshman . . . each bound to his own in creating what was to be remembered.

The student was part of his class and was his class . . . the green carnation, or the pink, or blue . . . or a red rose . . . the spirit of Sing, the color of Moving-up day.

Assimilation, participation, leadership, culmination . . . and another beginning.

And the college was class life.



A freshman . . . meaning many things.
Dressing with care for a first observation in School 52.
Hurrying to the Union from Pioneer Hall at 7:30 a. m. for a breakfast of scrambled eggs and rye toast.
Clammy hands in speech class.
Mail line, lunch line, co-op line.
Discussing wrongs and rights of orientation classes . . . praising an instructor, tearing down an instructor.
Running for an NFT.
Decisions - - an original research paper or someone else's . . . sleep or church Sunday morning . . . the boy back home or this one . . . Holly Hanging or better things.
Dark skirts and white blouses, dark trousers and white shirts . . . Sing.
Stuffed animals.
A freshman . . . years ahead of success and failure, color and monotony.
Challenging years.

freshman class



Paul Lempko, *president*; Carol Mills, *recording secretary*; William Hazelton, *treasurer*; David Axelson, *vice-president*; Catherine Whall, *corresponding secretary*.



sophomore class

A sophomore.

Tobogganing at camp, snow and hiking and hot coffee. A bus ride and songs.
Planting trees and bushes, identifying a snake, a shrub, a millipede.

Wool socks and loafers.

A prom, a cocktail party, a new formal.

Class meetings and parliamentary procedure, cabinet meetings, committee meetings.

An organization box in the hall.

These things are a sophomore.



Marcia Hicks, *treasurer*; J. Robert Levesque, *vice-president*; Donna Schultz, *recording secretary*; Jean Naish, *corresponding secretary*; Anton Schwarzmuller, *president*.



First row: Roberta Snyder, Marilyn Nadin, Carol Pfeil, Carole Tuthill, Evelyn Rosenstein, Joan Staub, Patricia Bjorklund, Fay Ellen Mickel, Barbara Zynda, Dianne Schmuckmier, Janice Bloom. *Second row:* Emily Bradshaw, Paula Neill, Anna Maria Rosch, Nancy Molter, Marilyn Koerber, Patricia O'Leary, Elizabeth Blakemore, Carole Smith, Muriel Kay, Cynthia Monroe. *Third row:* Gail Stephenson, Jacqueline Rush, Mary Heath, Janet Lau, Margaret Matheson, Arlene Newell, Barbara Jakiel, Marilyn Olear, Janet Weber, Theresa Kuwik, Joan Sager, Norma Mattei. *Fourth row:* Patricia Harris, Mary Ann Cooke, Eleanor Hartmann, Nancy Gallagher, Galye Foster, Betty Jane Stroedel, Virginia Beard, Joan Dean, Barbara Bottomley, Dorothy Duminuco, Suzanne Braun, Jane Wiedemann, Joan Klima, Carole Podsiadlo, Phyllis Schneider, Susann Kenline, Sharon Dobrovolsky, Carole Wilkinson, Phyllis Levine, Theresa Czarnecki, David Maul, Alice Lyman, Wilda Benson. *Fifth row:* Norman Symington, Richard Pratt, David Hammond, Paul Terhorst, Allan Jones.

junior counselors



Robert Lamparter, *vice-president*; Evelyn Rosenstein, *treasurer*; David Hammond, *president*; Barbara Zynda, *recording secretary*; Dorothy Duminuco, *corresponding secretary*.

The junior.

Participation, a walk to School 52 on a winter morning, a friendly critic, the children who were Stevie and Annette and Kenny.

Counseling . . . summer letters and name tags, registration and phone calls.

Sing, Prom, Moving-up day . . . those who always worked and those who never did . . . disappointments and spirit.

Late hours — a lesson plan . . . a letter home . . . a date . . . or just a talk.

Picture files.

A geography quiz.

Thoreau and Emerson.

Ditto machines, purple hands.

Hurrying days, quickening pace — study, work, fun, study . . . for next year will be the last.





Donald MacLeod, *president*; Irene Lasczewski, *secretary*; Jack Peters, *treasurer*; Sandra Philblad, *corresponding secretary*; Nicholas Macrides, *vice-president*.

senior class





These things he will remember... this senior.

Boy coats and plaid scarves, bucks and charcoal flannels, bermudas and knee socks.

Alarm clocks and tower chimes and school bells.

A sixth-grader named Tommy, who had red hair and couldn't read... a first grader who couldn't pronounce his name.

Individual differences.

Annex rooms that were too hot in summer, library seminars that were too crowded.

Cheeseburgers and small cokes.

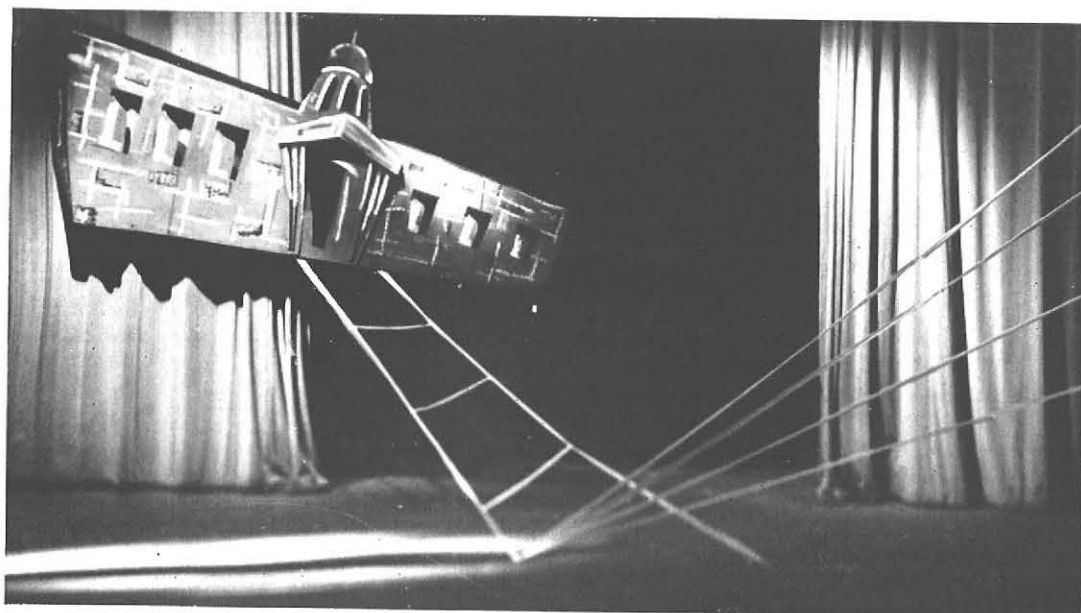
Instructors who didn't understand... and those who did.

Falling icicles.

A rerose.

Four years.

And he leaves confused and eager, and he will be like no other person ever was.





VIRGINIA LEE ABEL
Buffalo, New York
Elementary Education

MARY ANN ABRAMS
Patchogue, New York
Elementary Education

SARA GLORIA ACHTER
Buffalo, New York
Elementary Education



DOLORES M. ADAMS
Binghamton, New York
Home Economics



JOHN TURNER AIKEN
Buffalo, New York
Industrial Arts

ANTHONY J. ALBERTI
Buffalo, New York
Industrial Arts

DANA ALEXANDER
East Aurora, New York
Home Economics



JANE B. ALLEN
Kenmore, New York
Home Economics

JOYCE M. ALTPETER
Rochester, New York
Elementary Education

RUTH E. ALLBERT
Buffalo, New York
Elementary Education



JEAN ANN AMICO
Buffalo, New York
Elementary Education





STUART W. ANDREWS
Colden, New York
Industrial Arts



PATRICIA ANDRUCZYK
Buffalo, New York
Elementary Education



ROLF ANSELM
Buffalo, New York
Industrial Arts



ROSE MARY ANTHONY
West Seneca, New York
Elementary Education



ANTHONY ANTOLENA
Buffalo, New York
Elementary Education



NANCY L. APA
Buffalo, New York
Home Economics



JAN J. ARBITER
Yonkers, New York
Art Education



JUDY ANN ARMSTRONG
Salamanca, New York
Elementary Education



ALICE AVERY ASH
Hamburg, New York
Elementary Education



LOUIS JOSEPH AUGELLO
Buffalo, New York
Elementary Education



MAYMIE M. ARONICA
Buffalo, New York
Elementary Education



BETTY JEAN AUSTIN
Kenmore, New York
Elementary Education



GAIL YVONNE AUSTIN
Olean, New York
Elementary Education



JOSEPH BABISCH
Buffalo, New York
Art Education



JAMES WILSON BAER
Lancaster, New York
Elementary Education

ELIZABETH J. BAGLEY
Vineyard Haven, Mass.
Education for
Exceptional Children

BARBARA MAY BAILEY
Snyder, New York
Elementary Education





BARBARA JEAN BANE
Rochester, New York
Home Economics

MARIE HELEN BANE
Snyder, New York
Elementary Education



JEAN FRANCES BARONE
Niagara Falls, New York
Art Education



DOUGLAS MANLEY BATES
Colden, New York
Industrial Arts

GERALDINE F. BATT
Buffalo, New York
Elementary Education



MARJORIE ANN BECK
Fredonia, New York
Elementary Education

JANICE ALICE BECKER
Wayland, New York
Home Economics



LAWRENCE EMMETT BEEBE
Kenmore, New York
Elementary Education



CLARA ROSE BENEDETTI
Buffalo, New York
Elementary Education

WILMA A. BENJAMIN
Belfast, New York
Elementary Education

ZELDA C. BERNHARDT
Snyder, New York
Elementary Education



JANICE GENEVIEVE BENNETT
Franklinville, New York
Elementary Education

JILL A. BERNHARDT
Buffalo, New York
Elementary Education





HOWARD G. BETHEL
New Hyde Park, N. Y.
Industrial Arts
Art Education



JOSEPH A. BIONDOLILLO
Buffalo, New York
Elementary Education



ELIZABETH BLAKEMORE
Kenmore, New York
Elementary Education



JOAN L. BORDEAUX
Franklinville, N. Y.
Elementary Education



CARMELA B. BORGESE
Niagara Falls, N. Y.
Elementary Education



CAROL ANN BETTCHER
Gowanda, New York
Elementary Education



LOIS ANN BIESINGER
Buffalo, New York
Elementary Education



JUNE PHYLLIS BLATT
Kenmore, New York
Art Education



ANTHONY BONAVENTURA
Buffalo, New York
Industrial Arts

ELIZABETH BORKOWSKI
Buffalo, New York
Elementary Education

BARBARA BOTTOMLEY
Buffalo, New York
Elementary Education



STEPHANIE S. BOWER
Far Rockaway, N. Y.
Art Education



MILTON L. BOYARSKY
Hunter, New York
Industrial Arts

VELMA RUTH BOYLES
White Plains, N. Y.
Art Education



MARILYN ANN BRAUCH
Buffalo, New York
Art Education

JOAN RUTH BRITT
Buffalo, New York
Elementary Education



BONNIE BEBE BROCK
Buffalo, New York
Elementary Education

HARRIET IDA BROTT
Orchard Park, N. Y.
Elementary Education



KATHERINE A. BROWN
Pulaski, New York
Home Economics

JOHN BRUNO
Buffalo, New York
Elementary Education



PATRICIA JANE BRUNO
Buffalo, New York
Home Economics



CHRISTINE BUGALA
Lackawanna, New York
Elementary Education



DIANNE M. BURNHAM
Ashville, New York
Education for
Exceptional Children



ALBERT C. BURNS
Utica, New York
Elementary Education



EDWARD STUART BURT
Buffalo, New York
Industrial Arts



RICHARD A. BUSSE
Kenmore, New York
Industrial Arts



JAMES CHARLES CAMANN
Tonawanda, New York
Art Education



MARTIN L. CAMARATA
Rochester, New York
Art Education



BEULAH PETERS CANFIELD
Angola, New York
Education for
Exceptional Children



STEPHANIE CAPUSON
Buffalo, New York
Elementary Education



MARY C. CARBERRY
Kenmore, New York
Education for
Exceptional Children

ESTHER THERESA CETERSKI
Hagaman, New York
Education for
Exceptional Children



MYRNA JEAN CARR
Endicott, New York
Elementary Education



MARY ANN CARTER
Buffalo, New York
Elementary Education





FRED EARL CHAPMAN
Buffalo, New York
Industrial Arts



RICHARD P. CHATELAIN
Gloversville, New York
Industrial Arts



MARSHALL CHAZEN
Buffalo, New York
Industrial Arts

MELVIN E. CHAMBERS
Niagara Falls, New York
Elementary Education



KATHRYN VILANTE CHILDRESS
Kenmore New York
Elementary Education



DONALD M. CLARKE
Buffalo, New York
Art Education



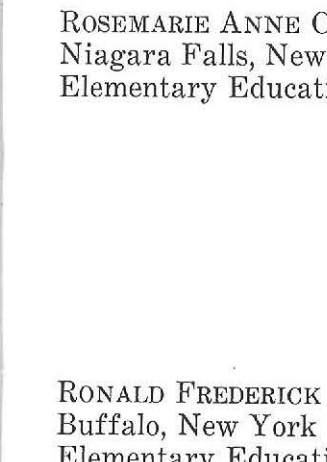
MARJORIE ANN CLARKE
Lockport, New York
Elementary Education



ROSEMARIE ANNE CHIDO
Niagara Falls, New York
Elementary Education



PHYLLIS A. CLEMENTS
Niagara Falls, N. Y.
Elementary Education



DANIEL JAMES CLIFFORD
Buffalo, New York
Elementary Education



RONALD FREDERICK CLINE
Buffalo, New York
Elementary Education



B. LUCILLE COCHRAN
Buffalo, New York
Elementary Education



ANGELINE P. COLAFRANCESCHI
Lackawanna, New York
Elementary Education



MARY LOU COLEMAN
Buffalo, New York
Elementary Education



MARY C. CONWAY
Buffalo, New York
Elementary Education



MARY ANN COOK
Buffalo, New York
Elementary Education



VICTORIA M. COSMANO
Buffalo, New York
Elementary Education



SUSAN MARY COUELL
Kenmore, New York
Home Economics



ELAINE AGNES COVENY
Kenmore, New York
Elementary Education



DANIEL E. CROWLEY
Olean, New York
Industrial Arts



JOSEPHINE C. CZEKAJ
Lockport, New York
Elementary Education



GERALD DALVEN
Long Beach, N. Y.
Elementary Education



PATRICIA ANN DAVIES
Batavia, New York
Home Economics





BENNIE DAVIS, JR.
Buffalo, New York
Elementary Education

BEVERLY J. DECKER
Elmira, New York
Education for
Exceptional Children

M. ANNE DEMPSEY
Bolivar, New York
Elementary Education



RONALD JOHN DEVITO
Lawrence, New York
Art Education



MARY JANE T. DIEBOLD
Williamsville, N. Y.
Elementary Education

MARY ANNE DIFRANCO
Niagara Falls, N. Y.
Elementary Education

BARBARA ANNE DILLS
Pavilion, New York
Art Education



MARY JANE DILorenzo
Snyder, New York
Art Education



JOSEPH DIPASQUALE
Buffalo, New York
Elementary Education

JOAN MARIE DIRR
Buffalo, New York
Education for
Exceptional Children

ANNETTE D. DIVITO
Niagara Falls, N. Y.
Elementary Education





LUCY MARY DOJCSAK
Buffalo, New York
Elementary Education



PAUL BERNARD DOMBROWSKI
Buffalo, New York
Art Education



DORIS ELAINE DODGE
Angelica, New York
Elementary Education



LOUIS R. DONATO
Buffalo, New York
Industrial Arts



FLORENCE DONDAJEWSKI
Cheektowaga, New York
Elementary Education



JOAN F. DOWNEY
Buffalo, New York
Elementary Education



LOIS ANN DOYLE
Pekin, New York
Art Education



PATRICIA ANNE DOWNES
Buffalo, New York
Elementary Education



LORRAINE C. DWECK
Buffalo, New York
Elementary Education



LOIS JOANN EBERHARDT
Buffalo, New York
Home Economics



DONALD MILLER EHAT
Eden, New York
Elementary Education



BARBARA ANN ELLIOTT
Buffalo, New York
Elementary Education



DAVID RICHARD ELY
Buffalo, New York
Elementary Education



SUZANNE E. EMERY
Athol Springs, N. Y.
Elementary Education



BARBARA ANNE ERNST
Orchard Park, N. Y.
Elementary Education



JEAN MARIE ERNST
Kenmore, New York
Home Economics



GINEVRA FRAME EVANS
Holland Patent, N. Y.
Elementary Education

ARNOLD FACKLAM, JR.
Buffalo, New York
Industrial Arts



CAROLYN ANN FEELEY
Niagara Falls, N. Y.
Elementary Education



MARY FETTO
Buffalo, New York
Elementary Education

EDWARD FINK
Buffalo, New York
Industrial Arts

BARBARA FISHELMAN
Newburgh, New York
Education for
Exceptional Children



GLORIA ANN FOLLETT
Olean, New York
Home Economics



WILLIAM M. FORBES
Buffalo, New York
Elementary Education

FLORENCE M. FORSTER
Buffalo, New York
Elementary Education

ISABELLA W. FOSTER
Cayuga, New York
Education for
Exceptional Children



BEVERLY ANN FRANKE
East Aurora, N. Y.
Elementary Education

MAY E. FRANKENBACH
Southampton, N. Y.
Home Economics

PHYLLIS C. FOSTER
Buffalo, New York
Elementary Education



MARY ANN FRANKLIN
Buffalo, New York
Elementary Education

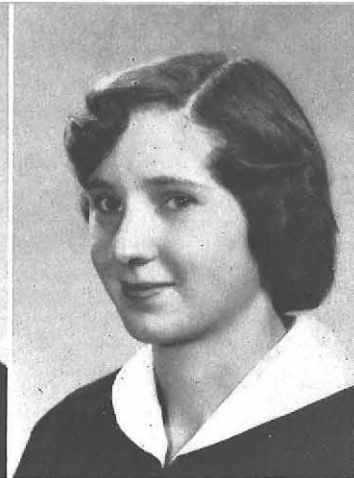




JAMES L. FRANKLYN
Sherburne, New York
Industrial Arts



JERRY R. FREIFELD
Bronx, New York
Education for
Exceptional Children



DORIS HEDWIG FREY
Waterville, New York
Elementary Education



JANET E. FRICK
Buffalo, New York
Elementary Education



THOMAS F. FRIEDMAN
Buffalo, New York
Industrial Arts



PEARL F. FRISCIC
Buffalo, New York
Elementary Education



GLORIA JEAN FROST
Bolivar, New York
Elementary Education



JACQUELYN A. FUNK
Salamanca, New York
Elementary Education

MARGARET GALLAGHER
Buffalo, New York
Elementary Education

JOAN ANN GARDNER
Fulton, New York
Elementary Education



MARIE JEANNE GAGNON
N. Tonawanda, N. Y.
Education for
Exceptional Children





MARLENE A. GARFIELD
Jamestown, New York
Elementary Education

PATRICK E. GASKIN
Henrietta, New York
Industrial Arts



MARIE IDA A. GEHRT
Liberty, New York
Art Education

MARIA D. GEORGE
Buffalo, New York
Elementary Education

MARILYN JANE GEORGE
Kenmore, New York
Elementary Education

OLIVE MAY GERNATT
Springville, New York
Home Economics





MICHAEL JAMES GERYAK
Buffalo, New York
Art Education



SYLVIA GETTY
Tonawanda, New York
Elementary Education



THOMAS D. GHENT
Cortland, New York
Art Education



ANITA MARY GIARDINO
Niagara Falls, New York
Elementary Education



LINDA MARI GIBBS
Buffalo, New York
Elementary Education



MARY ANN R. GILBERT
Buffalo, New York
Elementary Education



PATRICIA A. GILBERT
Buffalo, New York
Elementary Education



WILLIAM HENRY GILES
Kenmore, New York
Art Education



PAMELA ANN GILL
Gloversville, New York
Elementary Education



BARBARA G. GINSBERG
Buffalo, New York
Elementary Education

DAVID LEE GREEN
Kenmore, New York
Art Education



MARY M. GIORDANO
Buffalo, New York
Elementary Education



SUNO GO
Tokyo, Japan
Home Economics





LODEMA M. GREEN
Buffalo, New York
Elementary Education



MARION GREEN
Buffalo, New York
Elementary Education



LUCILLE M. GREGORIO
Buffalo, New York
Elementary Education



RUTH ELAINE GRITZKE
Buffalo, New York
Elementary Education



MARIAN E. GROVER
Erin, New York
Home Economics



FREDERICK E. GUERRA
Buffalo, New York
Art Education



EDWARD J. GUINDON
West Seneca, N. Y.
Industrial Arts



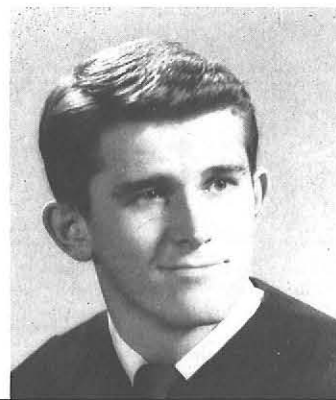
NORBERT J. GURBACKI
Buffalo, New York
Elementary Education

ARTHUR LEWIS HADLEY
Buffalo, New York
Industrial Arts

CHARLOTTE S. HALE
Hamburg, New York
Home Economics



NORMAN L. GUSTAVEL
Buffalo, New York
Elementary Education



ROLAND DONALD HALE
Oakfield, New York
Elementary Education



JOAN F. HALEY
Buffalo, New York
Home Economics



JEANNETTE M. HALSEY
Mexico, New York
Home Economics



HELEN L. HALSTEAD
Middleport, New York
Education for
Exceptional Children



ALBERT J. HAMMAN
Lawtons, New York
Industrial Arts



BARBARA LEE HANLON
Horseheads, New York
Home Economics



ANNJEANETTE HANNER
West Albany, N. Y.
Art Education



FAY ANN HANWELL
Depew, New York
Elementary Education



W. EDNA HARGROVE
Buffalo, New York
Elementary Education



JANICE LOUISE HART
Williamsville, N. Y.
Elementary Education





RUSSELL JACOB HASTREITER
Buffalo, New York
Art Education



SHIRLEY G. HAYES
Niagara Falls, N. Y.
Art Education



NANCY ANN HEIN
Buffalo, New York
Elementary Education



KENNETH RICHARD HENNIG
Kenmore, New York
Elementary Education



SALLY ANN HENRY
Buffalo, New York
Elementary Education



LELAND CARY HIRSCH
Buffalo, New York
Elementary Education



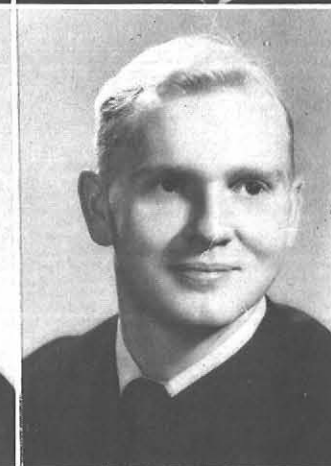
JOAN HOFFMANN
Cortland, New York
Home Economics



VIOLET A. HOFFMAN
Buffalo, New York
Elementary Education



WILLIAM EUGENE HOFFMAN
Buffalo, New York
Elementary Education



WILLIAM J. HOHMAN
Eggertsville, N. Y.
Art Education

CYNTHIA RICHARDSON HURLEY
Elmira, New York
Elementary Education



JAMES JOSEPH HOLLAND
Buffalo, New York
Industrial Arts



NORA L. HOLLEARN
Northville, New York
Elementary Education





ARTHUR RALPH HUTCHINGS
Buffalo, New York
Art Education



EUGENE THOMAS IRELAND
Buffalo, New York
Industrial Arts



BEVERLY ANN JOHNSTON
Rossie, New York
Elementary Education

MELINDA HUTCHINGS
Buffalo, New York
Elementary Education

RICHARD VINCENT HYLAND
Kenmore, New York
Industrial Arts

DANIEL RONALD IDZIK
Depew, New York
Elementary Education

MARY G. INSERA
Buffalo, New York
Elementary Education

ARLENE J. JANKOWSKI
Cheektowaga, N. Y.
Elementary Education

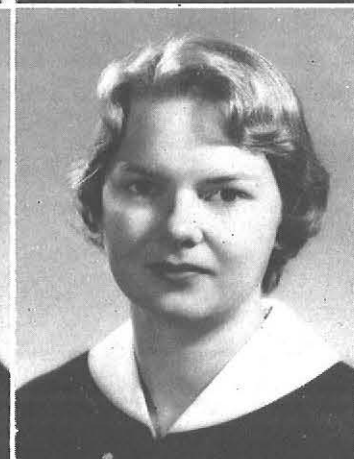
SHIRLEY ANN JAVERT
Lancaster, New York
Elementary Education

JAMES GARY JEDELE
Tonawanda, New York
Elementary Education

DONNA MARIE JOHNSON
Jamestown, New York
Education for
Exceptional Children

RAYMOND JOHNSTON
Buffalo, New York
Industrial Arts

MARY DIANE JONES
Kenmore, New York
Elementary Education



PAUL A. JOSEPHSON
New York, New York
Elementary Education



MARGARET L. JULIAN
Olean, New York
Elementary Education



CHESTER KACZMAREK
Lancaster, New York
Industrial Arts



BRIGITTE V. KALLEN
Buffalo, New York
Elementary Education



ROSE MARIE KARAGOZ
Buffalo, New York
Elementary Education



MARGARET D. KATTAU
Westbury, New York
Art Education



MARYANNE KATZ
New Hyde Park, N. Y.
Elementary Education



ROBERT E. KAUFMANN
Springville, New York
Industrial Arts



WILLIE MAE KEATON
Buffalo, New York
Elementary Education



RONALD B. KELLEHER
Buffalo, New York
Art Education





ANNE E. KENNEY
Lockport, New York
Elementary Education

ROBERT L. KERSCH
Niagara Falls, N. Y.
Elementary Education

THOMAS HENRY KIENE
Williamsville, N. Y.
Industrial Arts



GEORGE A. KIENER
Clarence, New York
Elementary Education



ROBERT J. KIRCHMYAR
Buffalo, New York
Art Education

MARY B. KIRSCH
Lockport, New York
Elementary Education

RAYMOND P. KISSEL
Tonawanda, New York
Art Education



GEORGE HERBERT KLEIN
Buffalo, New York
Elementary Education

CAROL G. KLINCK
Buffalo, New York
Education for
Exceptional Children

JEANETTE M. KITTEL
Brooklyn, New York
Elementary Education



DONNA JEAN KLUMPP
Eggertsville, New York
Elementary Education





MARILYN E. KOERBER
Buffalo, New York
Elementary Education



DIANE E. KRAATZ
Akron, New York
Elementary Education



ANNE G. KOBERSTEIN
Buffalo, New York
Education for
Exceptional Children



PAUL GEORGE KRAUSS
Albany, New York
Art Education



RICHARD A. LALLMANG
Buffalo, New York
Industrial Arts



JANET F. LASPISA
Buffalo, New York
Elementary Education



IRENE JANE LASZEWSKI
Endicott, New York
Education for
Exceptional Children



DORIS DICKINSON LAROSA
Buffalo, New York
Elementary Education



JOAN CAROLYN LATZA
Buffalo, New York
Elementary Education



RICHARD EUGENE LAUTZ
Buffalo, New York
Elementary Education



JOAN H. LAUTENSACK
Poughkeepsie, New York
Home Economics



IVAN DAVID LAWSON
Albany, New York
Art Education



KURT LEGAIT, JR.
N. Tonawanda, New York
Elementary Education



ROSLYN MARIE LEOY
Niagara Falls, N. Y.
Art Education



DIANE L. LINKNER
Snyder, New York
Elementary Education



ARLINE JANE LITTLE
East Concord, N. Y.
Elementary Education



KENNETH MACDONALD
Buffalo, New York
Industrial Arts

ANN B. MACDOUGALL
Buffalo, New York
Art Education



DONALD M. MACLEOD
Buffalo, New York
Elementary Education





NICHOLAS MACRIDES
Syracuse, New York
Art Education



CONWAY T. MAGEE
Speculator, New York
Art Education

SALVATORE J. MAISANO
Buffalo, New York
Elementary Education



MARY ANN MALECKI
Buffalo, New York
Elementary Education



ROBERT MALINOWSKI
Buffalo, New York
Elementary Education



THOMAS J. MALONEY
Buffalo, New York
Elementary Education

LOIS FLORENCE MALOY
Ashville, New York
Elementary Education



PAUL F. MANKE
Kenmore, New York
Elementary Education

GERALDINE MARAPESE
Rochester, New York
Elementary Education

MARY ANN MANKA
Buffalo, New York
Elementary Education



THOMAS F. MARION
Geneva, New York
Industrial Arts





DON CARL MARKHAM
Buffalo, New York
Elementary Education



SHARON LYN MARZOLF
Kenmore, New York
Art Education



RICHARD E. McADOO
Ripley, New York
Industrial Arts



JOSEPH M. McCABE
Worcester, New York
Education for
Exceptional Children



ZULA A. McCLELLAN
Buffalo, New York
Elementary Education



VERA ANNE MCDOWELL
Manlius, New York
Elementary Education



JEAN IRENE MCINNIS
Buffalo, New York
Elementary Education



WILLIAM A. MCINNIS
Buffalo, New York
Elementary Education



JAMES F. MCKENDRICK
Buffalo, New York
Elementary Education

PATRICIA J. McKEON
Binghamton, New York
Art Education

MABLE G. McMAHON
Buffalo, New York
Art Education





DORIS B. MCNETT
Pulaski, New York
Home Economics



PHYLLIS JEAN MEAD
Kenmore, New York
Elementary Education



MARILYN MEININGHAUS
Lancaster, New York
Elementary Education



LORRAINE M. MEINKE
Buffalo, New York
Elementary Education

JOAN L. METSELAAR
Buffalo, New York
Elementary Education



RONALD G. MEYERS
Buffalo, New York
Art Education





J. REGINALD MILES
Buffalo, New York
Elementary Education



BEVERLY B. MILLER
N. Tonawanda, N. Y.
Elementary Education



JANE E. MILLER
Rochester, New York
Art Education



JOANNA MARIA MILLER
Buffalo, New York
Elementary Education



MARGARET A. MILLER
Blasdell, New York
Elementary Education



NANCY JEAN MILLER
Watkins Glen, New York
Elementary Education



WILLIAM E. MILLER
N. Tonawanda, N. Y.
Elementary Education



DOROTHY A. MOCH
Dunkirk, New York
Art Education



FRANCES MARLENE MONACO
N. Tonawanda, New York
Elementary Education



DIANA JEAN MOORE
Grand Island, N. Y.
Art Education

ILENE W. MOSE
Addison, New York
Education for
Exceptional Children



KATHLEEN MARIE MOORE
Niagara Falls, New York
Elementary Education



SARIANN MORRIS
Buffalo, New York
Home Economics





ELAINE RUTH MUNTER
Buffalo, New York
Elementary Education



HEATHER D. NICHOLS
Depew, New York
Elementary Education



SALLY HALL NICHOLS
Salamanca, New York
Elementary Education



MARYANN T. NICHTER
Hamburg, New York
Elementary Education



BRUCE VALENS NICOLL
Rochester, New York
Industrial Arts
Art Education



DOROTHY NIEDZWIECKA
Buffalo, New York
Elementary Education



JOANNE RAE NOBLE
Buffalo, New York
Elementary Education



PATRICIA G. NOLLINGER
Clymer, New York
Art Education

PATRICIA ANN O'LEARY
Buffalo, New York
Education for
Exceptional Children

ELIZABETH ANN OLSON
Latham, New York
Art Education



MARILYN MARIE OLEAR
Cheektowaga, N. Y.
Elementary Education



JOAN LUCILLE ORMSBY
Buffalo, New York
Home Economics



ELIZABETH A. O'SHEA
Cortland, New York
Education for
Exceptional Children

JOAN C. OSMUNDSON
Williamsville, N. Y.
Art Education



JOHN ALBERT PALMER
Buffalo, New York
Elementary Education

FRANCES L. PALMISANO
Buffalo, New York
Elementary Education



CAROLINE S. PALONAI
Buffalo, New York
Elementary Education

JOSEPH P. PANDOLFINO
Buffalo, New York
Elementary Education



GRACE PANZARELLA
Buffalo, New York
Home Economics

DAVID M. PAPKE
Buffalo, New York
Elementary Education



DIANA E. PARES
Patchogue, New York
Elementary Education



MARY KAY PARKES
Buffalo, New York
Elementary Education



CAROLE HEALEY PARTRIDGE
Buffalo, New York
Art Education



LORETTA MAE PAULL
Olean, New York
Elementary Education

BARBARA N. PAYNE
Watertown, New York
Elementary Education



BETTY ARLENE PAYNE
Fulton, New York
Elementary Education

CARYL R. PENNER
Buffalo, New York
Elementary Education



HOWARD LEE PENNY
Buffalo, New York
Elementary Education



ROSANNE PERRY
Buffalo, New York
Elementary Education

JANET LAWSON PERT
Buffalo, New York
Elementary Education

SHIRLEY MARIE PETERS
N. Tonawanda, New York
Elementary Education



MARY ELLEN BARTH PETER
Buffalo, New York
Elementary Education

JOHN A. PETERS
Cheektowaga, N. Y.
Elementary Education





SANDRA LOU PHILBLAD
Olean, New York
Elementary Education



NANCY LOU PHILLIPS
Marcellus, New York
Home Economics



MARY LOUISE PIAZZA
Buffalo, New York
Art Education

CAROL ANN PFEIL
Hamburg, New York
Elementary Education



EUGENE BERNARD PIEDMONT
Holley, New York
Elementary Education



JEAN LOUISE PIEROTTI
Buffalo, New York
Elementary Education



MADDALENA ILIA PINNOLA
Lawrence, New York
Art Education



BARBARA MARY PIELER
Blasdell, New York
Elementary Education



ROBERT TAYLOR PLUMB
Potsdam, New York
Art Education

HELEN GERTRUDE POPE
Buffalo, New York
Home Economics



ARNOLD D. POPINSKY
New York, New York
Art Education

BEVERLY DIANNE PRICE
Falconer, New York
Art Education



LOIS ANN PUDNEY
Buffalo, New York
Elementary Education



JOHN PURPURA
Long Island City, N. Y.
Art Education



MARLENE L. RAHUBA
Buffalo, New York
Elementary Education



DIANE M. REINECKE
Farmingdale, N. Y.
Elementary Education



MARJORIE J. RIEDEL
Grand Island, N. Y.
Home Economics



ELAINE C. ROCKMAN
Jamestown, New York
Elementary Education



SALLY JANE ROCKWOOD
Boston, New York
Elementary Education



LORETTA C. ROGALA
Lackawanna, New York
Elementary Education



JOYCE W. ROGERS
Buffalo, New York
Elementary Education



JOAN MARIE ROLL
Buffalo, New York
Elementary Education



ELIZABETH ANN ROSE
Buffalo, New York
Education for
Exceptional Children





RUTH IRENE ROSE
Buffalo, New York
Elementary Education

SUSAN U. ROSENBERGER
Rockville Centre, N. Y.
Elementary Education

MALCOLM C. ROSS
Oneonta, New York
Art Education



LEONARD ROSSI
Buffalo, New York
Industrial Arts



HERBERT J. ROWSWELL
Buffalo, New York
Art Education

RHETA SUSAN RUBIN
Newburgh, New York
Elementary Education

NANCY RUSH
Rochester, New York
Elementary Education



WILLIAM JOHN RYAN
Niagara Falls, N. Y.
Industrial Arts

MARY LOUISE SANCHEZ
Lackawanna, New York
Elementary Education

RICHARD H. RUSSELL
Buffalo, New York
Elementary Education



EDWARD J. SANDEL
Jamestown, N. Y.
Elementary Education





MONICA CATHERINE SANDER
Buffalo, New York
Elementary Education



MARY ANN SCHLIERF
East Amherst, New York
Elementary Education



ROBERT C. SCHULER
Buffalo, New York
Elementary Education

SAMUEL J. SAWYER
Norwich, New York
Art Education

HELEN M. SCHAFER
Lancaster, New York
Elementary Education

ANN L. SCHEER
Syracuse, New York
Home Economics

MARION SCHILLACI
Buffalo, New York
Home Economics

MARY LOU SCHMITT
Kenmore, New York
Home Economics

DORIS ANN SCHNEEGAS
Hornell, New York
Home Economics

GAYLE A. SCHRADER
Rochester, New York
Education for
Exceptional Children

JOAN MARILYN SCHROEDER
Buffalo, New York
Elementary Education

HELENE I. SCHULTZ
Elba, New York
Elementary Education

RUTH CAROL SCHULZ
Buffalo, New York
Elementary Education





ROBERT SCHUMACHER
Tonawanda, New York
Industrial Arts



DOROTHY L. SCHUTRUM
Buffalo, New York
Home Economics



MARY J. SCRYMGEOUR
Rochester, New York
Elementary Education



ARLENE H. SELDOW
Rochester, New York
Education for
Exceptional Children

ELIZABETH SEXSMITH
Fort Erie, Ont., Can.
Home Economics

MARGARET SHERWOOD
Liberty, New York
Elementary Education





KATHERINE A. SHOUP
Jamestown, New York
Elementary Education

JOAN ELAINE SIEGEL
Kenmore, New York
Elementary Education

CATHERINE SILLIMAN
Farmingdale, N. Y.
Elementary Education



CATHERINE N. SIMON
Kenmore, New York
Home Economics



EDWARD W. SIMONSEN
Buffalo, New York
Elementary Education

PATRICIA SLAWIENSKI
Buffalo, New York
Elementary Education

NANCY E. SLINDE
Cicero, New York
Home Economics



GORDON GRANT SMITH
Brockport, New York
Industrial Arts

HALLIE SMITH
Buffalo, New York
Home Economics

VIRGINIA DOROTHY SLY
Rochester, New York
Elementary Education



JACQUELINE L. SMITH
Buffalo, New York
Elementary Education

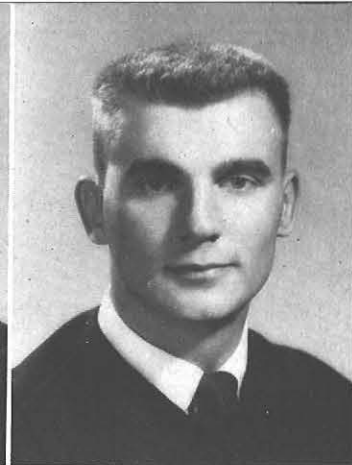




LOIS MAY SMITH
Buffalo, New York
Elementary Education



LOWELL L. SMITH
Peekskill, New York
Elementary Education



SHERWOOD J. SMITH
Angola, New York
Art Education



TERESA ANN SMUTKO
Niagara Falls, N. Y.
Elementary Education



SYLVIA SOLKOFF
Rochester, New York
Elementary Education



JOYCE ANN STAUDT
Baldwin, New York
Art Education



DONALD J. STEBBINS
Buffalo, New York
Industrial Arts



WINONA STONEBRAKER
Buffalo, New York
Home Economics



BETTY JANE STRODEL
Buffalo, New York
Elementary Education

JOYCE E. STRONG
Lockport, New York
Elementary Education

RICHARD J. STUBLEY
Warsaw, New York
Industrial Arts





MARY JANE SULLIVAN
Williamsville, N. Y.
Education for
Exceptional Children



SHIRLEY A. SYLVESTER
Medina, New York
Home Economics



DELPHINE SZAFRANSKI
Buffalo, New York
Art Education



HELEN A. SZCZESNIAK
Buffalo, New York
Elementary Education

ANTHONY PAUL TABBI
Buffalo, New York
Elementary Education



CAROL JEAN TALBOT
Kenmore, New York
Elementary Education





RICHARD SAMUEL TAMBE
Rochester, New York
Industrial Arts



JOANNE W. TAYLOR
Tonawanda, New York
Elementary Education



JOYCE A. TAYLOR
Lawtons, New York
Home Economics



ROSEMARY ANN TENNEY
Buffalo, New York
Elementary Education



A. JEAN THOMPSON
Kenmore, New York
Home Economics



MARY ANN TIRONE
Buffalo, New York
Elementary Education



ALBERT CARL TOMM
Tonawanda, New York
Elementary Education



CHARLES LOUIS TORCH, JR.
Buffalo, New York
Elementary Education



GRACE PARMELEE TRAVIS
Canisteo, New York
Home Economics



EDWARD C. TUCHOLSK
Buffalo, New York
Elementary Education

CAROLYN LOIS VERNER
Niagara Falls, New York
Art Education



DORIS ANNE VANALLEN
Warsaw, New York
Elementary Education



CHARLOTTE J. VENESKI
East Amherst, N. Y.
Elementary Education





LENORE VOLO
Athol Springs, N. Y.
Elementary Education



DIANNA M. WARREN
Snyder, New York
Elementary Education



MARILYN J. WATKINS
Buffalo, New York
Elementary Education



WILLIAM ELLIS WEAN
Buffalo, New York
Art Education



LORRAINE G. WEAVER
Rockville Centre, N. Y.
Art Education



FREDERICK R. WEBER
Lockport, New York
Elementary Education



FRANKLIN R. WEBSTER
Buffalo, New York
Industrial Arts



WILLIAM M. WEIKEL
Buffalo, New York
Elementary Education

JAMES PAUL WELLS
Buffalo, New York
Elementary Education

CAROL ANN WESSEL
Buffalo, New York
Home Economics



THADDEUS S. WELLENC
Buffalo, New York
Elementary Education



JOSEPH A. WHALEN
Lockport, New York
Art Education



MARY JANE WICKHAM
Hector, New York
Home Economics



JANE E. WIEDEMANN
Kenmore, New York
Elementary Education



RICHARD ROY WIEGERT
Buffalo, New York
Elementary Education



JOAN MARIE WIGHT
New Rochelle, N. Y.
Elementary Education



NANCY JEAN WILLARD
Franklinville, N. Y.
Education for
Exceptional Children



SALLY ANN WILLIAMS
Akron, New York
Art Education



LYNN WINTER
Grand Island, N. Y.
Elementary Education



CORINNE J. WITTMAN
Buffalo, New York
Elementary Education



CAROLE S. WITTNER
Scotia, New York
Elementary Education





MARGARET EILEEN WIZEMAN
Palmyra, New York
Elementary Education

DOROTHEA WLODARCZYK
Cowlesville, N. Y.
Home Economics



JUDITH A. WOLF
Tonawanda, New York
Elementary Education



ALICE LOUISE WOLFE
South Dayton, New York
Home Economics

PAUL R. WOLLENBERG
Eden, New York
Industrial Arts

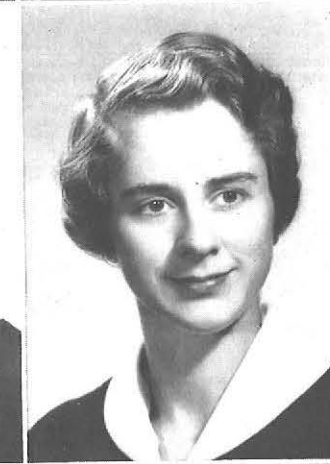


MARILYN KAY WOODARD
Buffalo, New York
Elementary Education

ROBERTA A. WRAY
Binghamton, N. Y.
Education for
Exceptional Children



GLADYS ANN WRESZIN
Cedarhurst, New York
Education for
Exceptional Children



JOYCE ANN WRIGHT
Chowchilla, California
Elementary Education

JOAN MARY YATES
Northville, New York
Elementary Education

M. RUTH YOUNG
Wellsville, New York
Elementary Education



JOY OLIVE YONDT
Buffalo, New York
Elementary Education

LOIS YOUNG
Salamanca, New York
Education for
Exceptional Children





PAUL A. YOUNG
Kenmore, New York
Elementary Education

JEAN M. ZALENSKI
Binghamton, N. Y.
Art Education



MARY ANN L. ZIBLUT
Niagara Falls, N. Y.
Education for
Exceptional Children



HELEN MARIE ZOLTAK
Buffalo, New York
Elementary Education

ASTRA ZIVERSS
Buffalo, New York
Elementary Education



DEAN FREDERICK ZUCH
N. Tonawanda, N. Y.
Elementary Education



EDWARD H. ZWICK
Lake George, N. Y.
Industrial Arts

JOHN E. ZWICK
Kenmore, New York
Elementary Education

