

State University of New York College at Buffalo - Buffalo State University

Digital Commons at Buffalo State

Elms, Student Yearbooks

Buffalo State Archives: History of the Institution

1-5-1947

The Elms 1947

Buffalo State College

Follow this and additional works at: <https://digitalcommons.buffalostate.edu/theelms>



Part of the [History Commons](#)

Recommended Citation

Buffalo State College, "The Elms 1947" (1947). *Elms, Student Yearbooks*. 36.
<https://digitalcommons.buffalostate.edu/theelms/36>

This Book is brought to you for free and open access by the Buffalo State Archives: History of the Institution at Digital Commons at Buffalo State. It has been accepted for inclusion in Elms, Student Yearbooks by an authorized administrator of Digital Commons at Buffalo State. For more information, please contact digitalcommons@buffalostate.edu.



Elms

EDITORS

EDITOR-IN-CHIEF.....MAURA LYONS
BUSINESS MANAGER.....JANET CAMPBELL
ART-LAYOUT EDITOR.....BARBARA RICHARDSON
ART-LAYOUT EDITOR.....JANET WHALLEY
LITERARY EDITOR.....SALLY ABGOTT
PHOTOGRAPHY EDITOR.....DONALD HENDERSON
TYPING EDITOR.....HELEN JAMES

ART STAFF

Dorothy Eiss.....Virginia Pfeffer
Gloria Grossman.....Patricia Radtke
Barbara LaVigne.....Virginia Teufel
Kathryn McIlreath...George Weinheimer
Ruth Neaman

LITERARY STAFF

Dorothy Barrett.....Roberta Howard
Marilyn Berry.....Carol McDougall
Ernesta Del Prince.....Beryl O'Mara
Leo Fenar.....Deborah O'Hagan
Marilyn Grotzka.....Lois Scheurele

PHOTOGRAPHY STAFF

Walter Erb.....Robert Querns
Jewel Gerstmann.....Thomas Schreiner

TYPING STAFF

Marjorie Hutcheson.....Mary Alice Ryan
Marilyn Miller

The Elms

New York State College for Teachers
Buffalo, New York

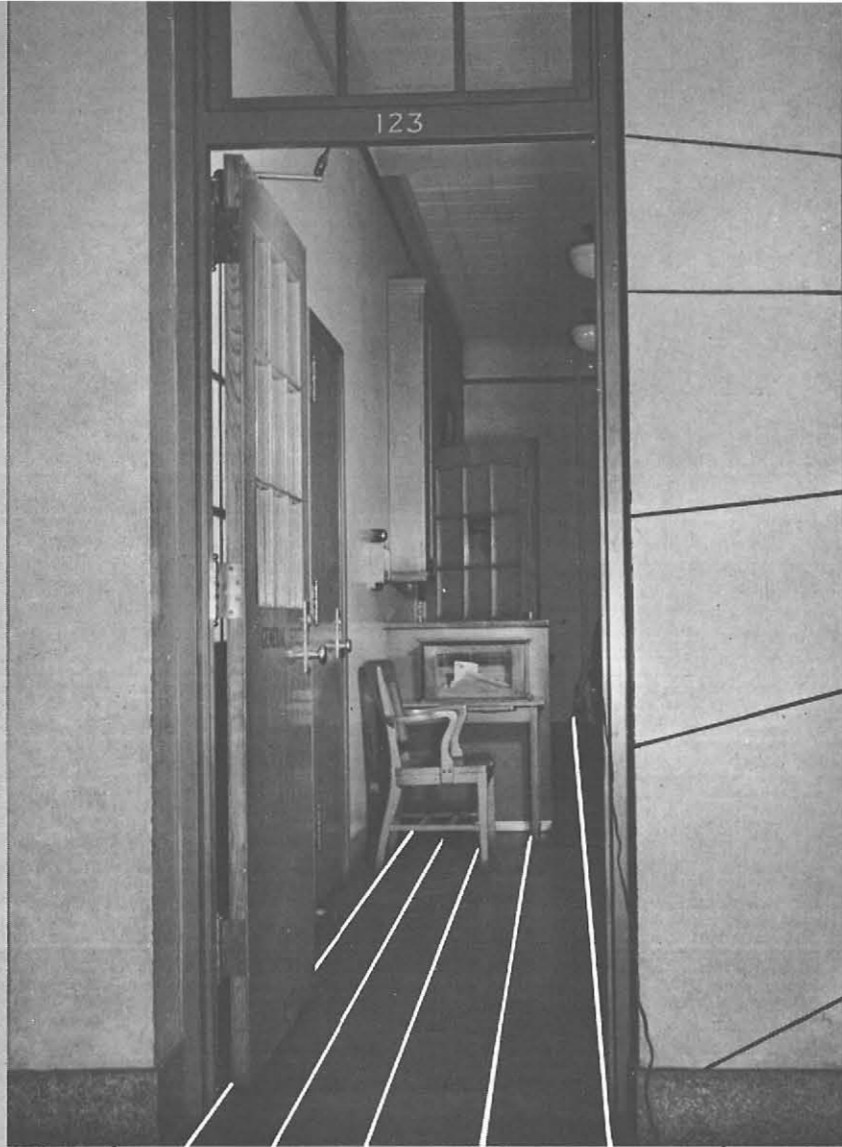
The **EL-47**
Elms

In you we have welded
Our hope—
Chime softly bell.
Our traditions—
Chime clearly bell.
Our very best—
Chime ever bell.



"Up in the tower a bell
shall ring—
Here in our hearts a voice
shall sing —"

"the college campus grew
and still it GROWS!!"



In you we have welded
Our hope—
Chime softly bell.



Campus
TOWN
1947

DR. HARRY W. ROCKWELL, PRESIDENT

No institution—, project—, or endeavor, can succeed without an understanding and capable leader. We are indeed fortunate to have Harry Westcott Rockwell as our college president, for his achievements are far-reaching, and his contribution to the prestige of the college can never be repaid. Truly, here is a man who has progressed with the times, — for he has given all of us a true concept of Experiencing, — Sharing, — and Appreciating — EDUCATION

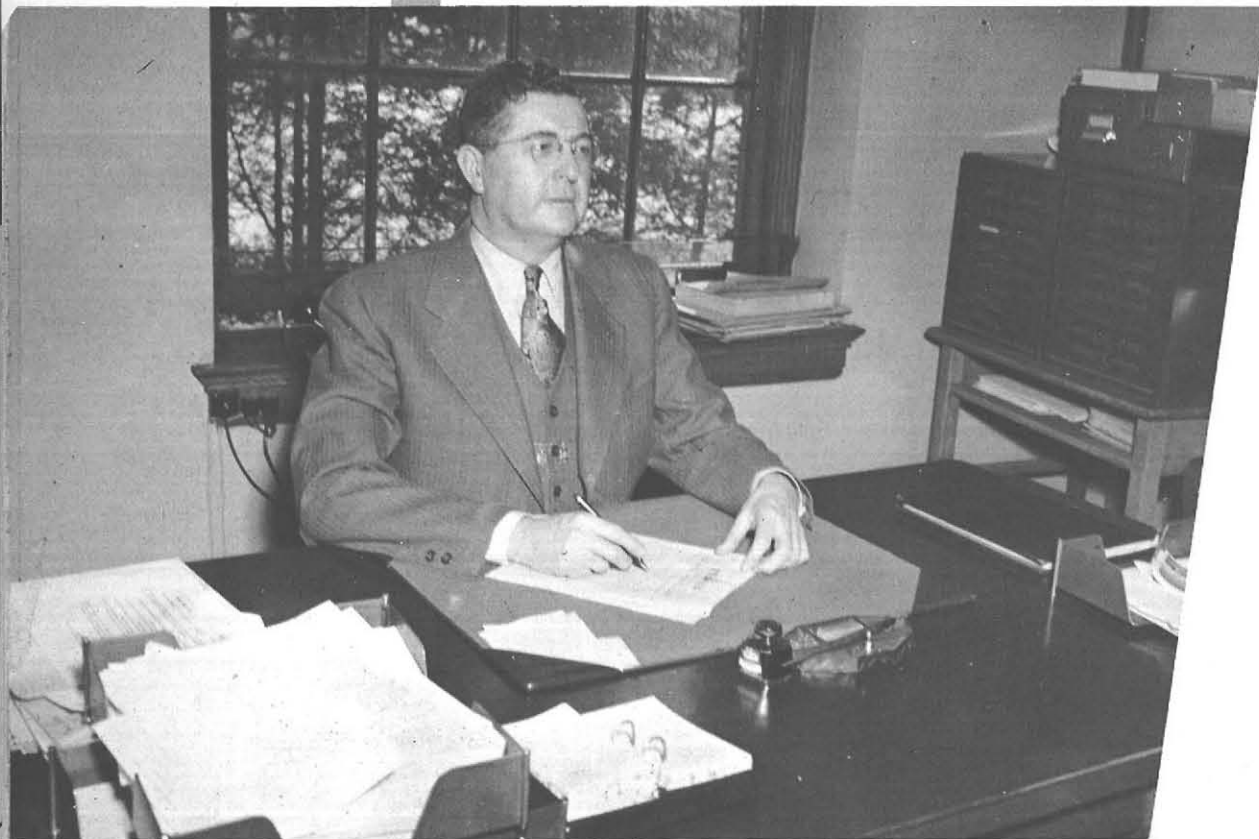
DEAN HORN

Patient, in his attempt to mature our choices; Steadfast, in his goals for student achievement; Friendly, in his contact and genial in his acquaintance with the student body, he is our trusted and respected, efficient administrator, Ralph Horn, Dean of the college



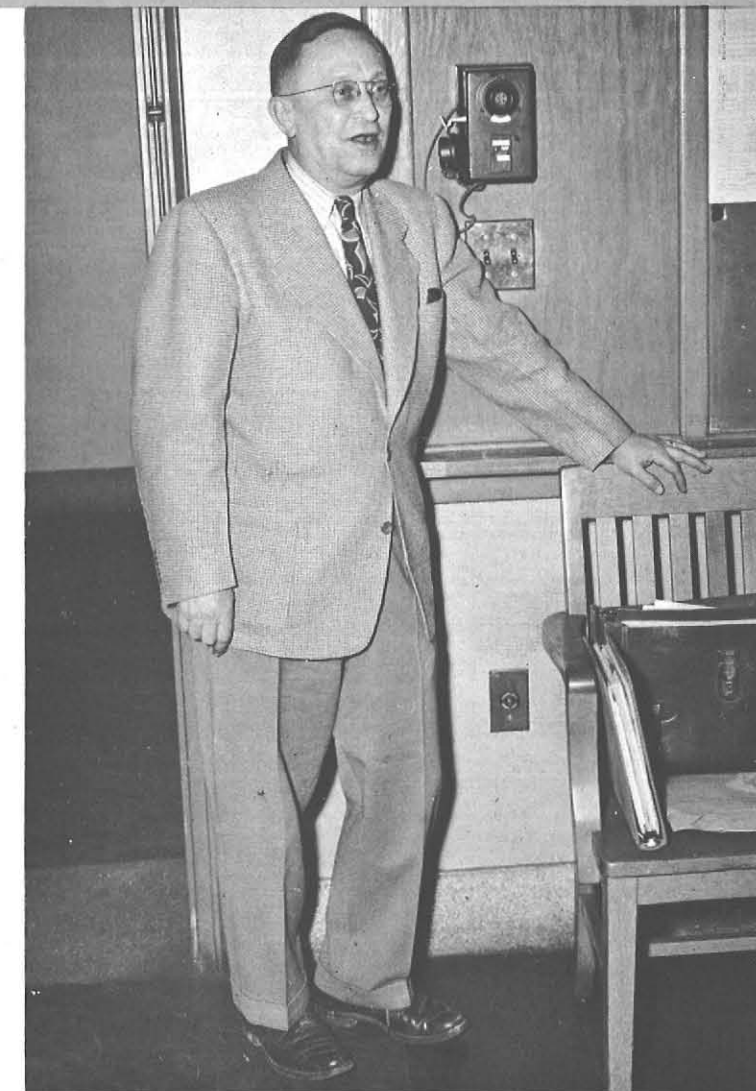
DEAN REED

Alumni remember her as part of our college spirit, because they knew her enthusiasm when they were freshmen; her vitality when they were sophomores; her sedulousness when juniors; and her master efficiency while they were seniors. A ZEAL . . . A SPIRIT . . . a reminder that college life is a clearance for insignificance and a development for only essentials



DEAN FRETZ

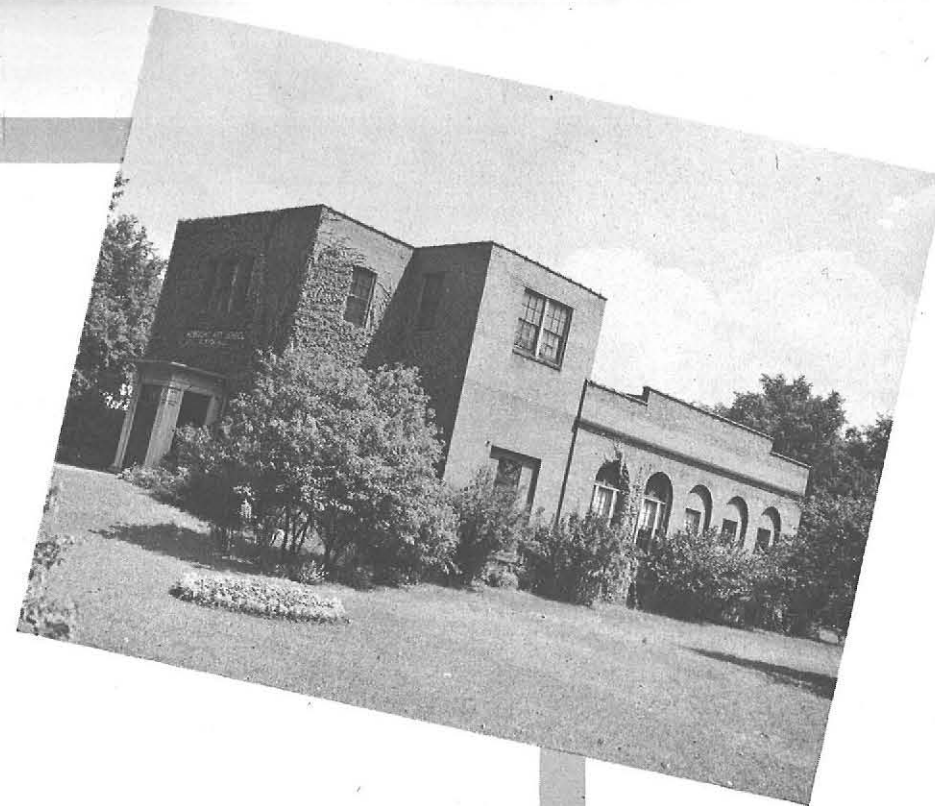
The student's choice is Dr. Fretz . . . BECAUSE—he is a dependable counsel, an understanding mentor; BECAUSE he is an optimist and a champion of student opinion. A friend, humorous and helpful; REMEMBERED—forever and two days





Left to right, seated: Edith Wolf, Ruth Karcher, Instructors; standing: D. Kenneth Winebrenner, Assistant Professor; Stanley A. Czurlis, Director of Training in Art Education; Edna Meibohm, Carolyn Heyman, Instructors; D. Paul Smay, Assistant Professor

ART EDUCATION DEPARTMENT



ALBRIGHT ART SCHOOL

Left to right: Philip Elliott, Art School Director; Edward Kasper, Instructor in Painting; Allen Downs, Fritz Pfeiffer, Instructors in Painting; Chet La-More, Instructor in Design; Helen New, Instructor in Lettering; Rena Rubenstein, Instructor in Drawing





Left to right, seated: Alma R. Roudebush, Assistant Professor of Home Economics; Harriet Thompson, Acting Professor in Home Economics; Martha Pratt, Assistant Professor of Home Economics; Arline Johnson, Margaret Grant, Instructors; Sara Pratt, Assistant Professor; standing: Faye Keever, Ruth Palmer, Lois Adams, Ruth Buddenhagen, Instructors; Mildred Sipp, Director of Training in Home Economics

HOME ECONOMICS DEPARTMENT



Seated: Walter Weber, Assistant Professor of Electrical Theory; Frederick Finsterbach, Instructor in General Shop; George Quackenbush, Assistant Professor of Vocational Organization; Irving Perkins, Director of Industrial Arts Teacher Education; Burton Waagen, Instructor in Elementary Industrial Arts; Emerson Neuhardt, Assistant Professor of Industrial Arts; Harold Steffen, Instructor in Drafting; standing: Edgar Strong, Instructor in Ceramics; Owen Harlan, Instructor in Metalwork; Charles Weigand, Instructor in Printing; Edward Morrice, Instructor in Methods; Louis Callan, Instructor in Woodworking; John Fontana, Instructor in Mechanics; Andrew Grabau, Assistant Professor of English; Henry Mandel, Instructor in Transportation

INDUSTRIAL ARTS DEPARTMENT



EDUCATION

Left to right, seated: Mae O'Brien, Assistant Professor; Oscar E. Hertzberg, Professor of Education, Head of Department; Kate V. Wofford, Professor of Rural Education, Head of Department; Harry Steel, Director of Training; standing: Paul W. Sloan, Professor of Education; Martha G. Metz, Assistant Professor of Education; Chester A. Pugsley, Professor of Elementary School Administration; Anna A. Martorana, Homer A. Bruce, Instructors in Education; Margaret S. Quayle, Assistant Professor of Education; Sherman G. Crayton, Professor of Education



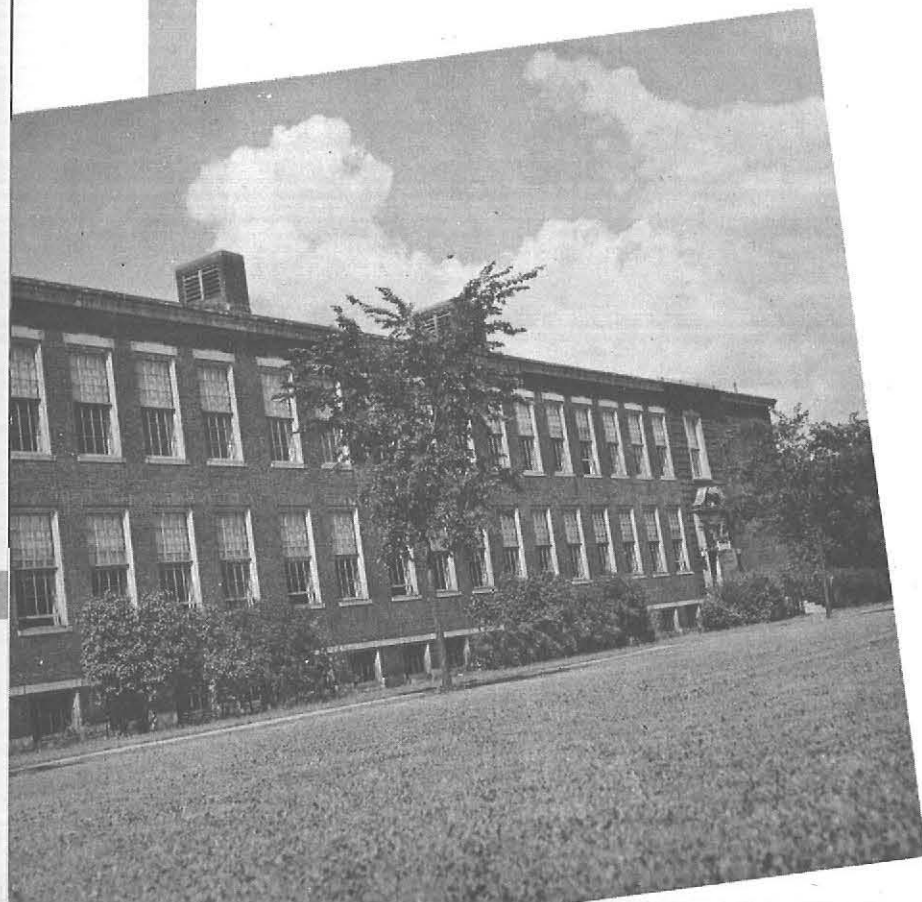
Left to right, seated Mildred S. Roesser, Marion P. Dana, Instructors; standing: Harold F. Peterson, Professor of History, Head of Department; Lester B. Mason, Assistant Professor of History; Marguerite Stockberger, Instructor; Robert E. Albright, Professor of Sociology; Marvin Rapp, Assistant Professor of History

SOCIAL STUDIES



Left to right, seated: Marguerite Stockberger, Instructor in History and Social Studies; Helen Rimkus, Assistant College Librarian; Mary Jamison, Instructor in Kindergarten; Ruth Sugarman, Instructor in Fifth Grade; Edith Wolf, Instructor in Art; Hertha Ganey, Instructor in English and Latin; standing: Chester A. Pugsley, Principal; Faye Mansfield, Dolores Mason, Dorothea Krivicich, Eleanor Gover, Inez Knapp, Instructors in Grades; Melvina Svec, Instructor in Geography; Paul W. Eberman, Instructor in Mathematics

SCHOOL OF PRACTICE



ENGLISH

Left to right: John M. Thurber, Professor of English, Head of Department; Alfred Holman, Jr., Assistant Professor of English; Betty Gallagher, Instructor; Arthur L. Bradford, Professor of English; Hertha S. Ganey, Instructor; Phariss C. Bradford, Assistant Professor; Mina S. Goossen, Assistant Professor of English and Dramatics; Andrew W. Grabau, Assistant Professor of English; Fraser B. Drew, Instructor





Left to right: Mary Louise McMahon, Kenneth R. Coghill, Instructors in Music; Silas Boyd, Professor of Music, Head of Music Department

MUSIC

LANGUAGE

Charles A. Messner, Professor of Languages



VISUAL EDUCATION

D. Paul Smay, Director of Visual Education and Instruction



SCIENCE

Left to right, seated: Raymond Fretz, Assistant Professor of Science; Eleanor Schrader, Instructor in Science; H. Emmett Brown, Professor of Science, Head of Department; standing: John Urban, Professor of Science; Sigurd W. Sheel, Instructor in Chemistry; Charles A. Vail, Assistant Professor of Science



Left to right: Hubert E. Coyer, Virginia Jordan, Instructors in Health Education; Ruth E. Houston, Professor, Head of Department; Kathleen Barber, Beryl E. Frech, Instructors in Health Education

HEALTH EDUCATION

DRAMATIC PRODUCTION

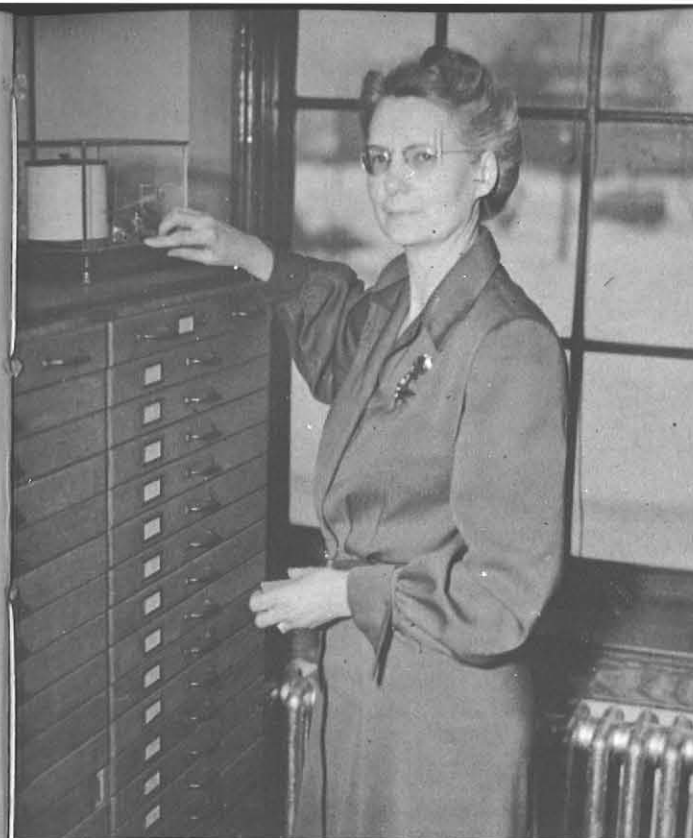
Mina Goossen, Director of Dramatics; Betty Gallagher, Instructor in English





SPECIAL EDUCATION

Gladys R. Reid, Assistant Professor;
Maurice H. Fouracre, Professor, De-
partment for Handicapped Children



GEOGRAPHY

Katheryne Whittemore, Assis-
tant Professor of Geography



EXTENSION

Robert E. Albright, Professor of
Sociology, Director of Extension

MATHEMATICS DEPARTMENT

Left to right: Paul W. Eberman, Instructor in Mathematics;
Reuben S. Ebert, Professor of Mathematics, Head of Depart-
ment; Harry C. Johnson, Assistant Professor of Mathematics



PLACEMENT

Mrs. June Truesdale,
Alumni and Placement
Secretary; Harry Steel
Director of Placement



LIBRARY

Left to right: Frances Breen, Junior Librarian; Frances G. Hepinstall,
College Librarian; Helen Rimkus, Marion Buchholz, Assistant Librarians



HEALTH SERVICE

Left to right: John V. Wadsworth, Physician; Doris S.
Bonnar, Assistant Nurse; Kathleen Barber, College Nurse





Charlot Fetterman, Manager of Bookstore
 Marietta R. Ferro, Assistant Manager

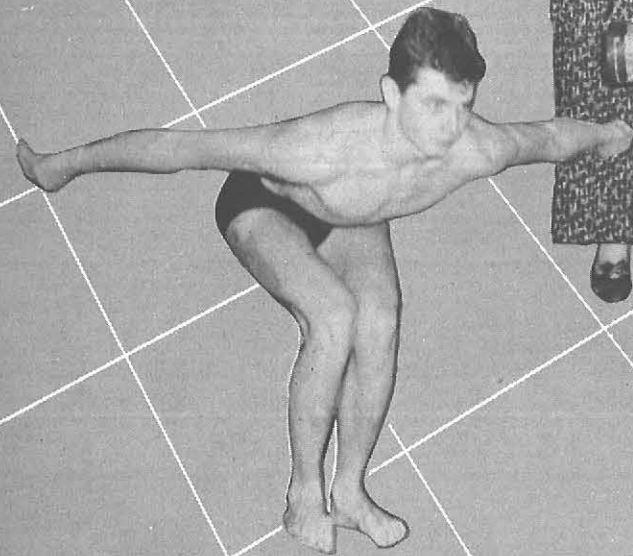
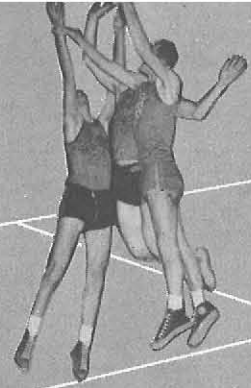
CO-OP



Left to right, seated: Clara Bauer, Stenographer; Kathryn S. Graham, President's Secretary; Rosemary Fornes, Stenographer; standing: Jeanne Hennessey, Stenographer; Mary M. May, Senior Stenographer; Mary Alÿce Blanco, Jane L. DiAddario, Berdena C. Dolberg, Edith Levin, Catherine Rudolph, Stenographers

OFFICE

"show them skill and method,
bring forth the INDIVIDUAL! !"



"in our TRADITIONS—
Chime clearly bell . . ."



ALPHA HONOR SOCIETY

October—December—May—are significant months in campus life; they are marked by certain traditions of "State" presented through Alpha Honor Society. October means Organization Day—when each campus club has an opportunity to present its purpose and program to its prospective membership. Holly Hanging, sponsored by Alpha, shows our halls bedecked with gay Christmas greens. Each Spring a special assembly program provides the opportunity for the impressive Alpha Tapping Ceremony. At this time, certain members of the upper two classes, recognized for outstanding leadership abilities, are selected for membership in Alpha and have the honor of wearing the symbol of the Greek letter "A"



PHI UPSILON OMICRON

The members of Phi Upsilon Omicron have every right to be proud of this organization. First, membership in this organization is the highest honor that can come to a girl in the Home Economics Department; and secondly, this club upholds to the utmost its task of advancing the Home Economics field and promoting the moral and intellectual development of its members. This group has presented several interesting lecturers and a tea for Home Ec. sophomores



EPSILON PI TAU

A group of Industrial Arts men, active in promoting the efficiency and research of the department organized, in 1938, to become Tau Chapter of Epsilon Pi Tau, international honorary professional fraternity. Since its founding, the organization has carried on an outstanding program in behalf of the profession which it represents. During the spring of this year the fraternity, in cooperation with the Industrial Arts Department, was influential in organizing the First Annual Spring Conference for western New York Industrial Arts Instructors. During the conference fifteen members were initiated into this group on our campus. Outstanding among the initiates was Miss Mary Jacobs, the first woman to become a member of the Tau chapter and the second woman to be honored with membership in this international fraternity

MEN'S CAMPUS CLUB

With a complete calendar of informal supper meetings, bowling parties, sports nights, and movies, Men's Campus Club has returned to the college. From the new Men's Frosh Camp in the fall through to the revival of the Spring Athletic Banquet, the club has cut across all religious, fraternal, departmental and student-faculty organization lines. Hopes are high among the members to continue the years of growth which were interrupted by the war





NU LAMBDA SIGMA

" . . . a stone, a leaf, an unfound door of a stone, a leaf, a door . . . " and all the familiar faces of Nu Lambda Sigma members on the Elms, the Record, the Handbook staffs . . . We came to this campus to further our interest in literature and creative writing, and for this purpose have we labored long and arduously . . . This year Nu Lambda Sigma has again come to the fore in arousing student interest in publications—particularly by co-sponsoring with the Record, our very successful short story contest



FOREIGN LANGUAGE CLUB

Strictly cosmopolitan? That's the Foreign Language Club! The members interests are as far reaching as the earth, and their aim is to study, appreciate, and become acquainted with the various cultures the world over. Meetings, therefore, include not only discussion groups, but also, whenever the opportunity presents itself, addresses by people of foreign countries. Through these meetings members learn "first hand," the customs of various people





HOME ECONOMICS CLUB

The "Pirate's Den" was one of their offerings—and so were numerous Home Economics lectures, the Foreign Fellowship Student March and parties, parties, and more parties! Thus runs the busy social calendar of the pre-professional Home Ec. Club, and thus they fulfill the social phase of their purpose. The organization has further proposed to influence others to realize the importance of Home Economics as a profession, to develop leadership and aid its members to be more effective citizens in communities



NON-RESIDENT ASSOCIATION

A newly recognized group on campus is the Non-Resident Association which helps to make life away from home pleasant and interesting. It aids in the acclimation of students to their new surroundings, fosters improvements in the environment of students, and discusses problems arising in residence centers. Various social activities and excursions to local points of interest are planned to round out the year's program for this group of out of town girls from our college



FUTURE TEACHERS OF AMERICA

Future Teachers of America, our most representative organization on campus, is a Junior branch of the National Education Association. The group is interested in solving educational problems and aims at developing individuals with well-rounded personalities, who, in turn, will make well-rounded teachers! These aims are accomplished by such things as field trips, lectures, discussions, and camping experiences. F.T.A. also sponsors an annual cookie sale and this year has done much in promoting spirit at basketball games

PSYCHOLOGY CLUB

It is with a sense of accomplishment and pride that the Psychology Club celebrates its tenth anniversary. In 1937, thirteen charter members met to frame and adopt our constitution. The succeeding ten years have overwhelmingly proven that an increasing number of students have become interested in the purpose of this club. These aims are primarily to enable the students of education to delve further into all phases of psychology, beyond those offered in the classroom and thereby develop themselves to the fullest so that they may, in turn, develop the children under their care. So popular has the club become that in addition to previous requirements each person interested in joining must write a research paper of a psychological subject in which he is interested



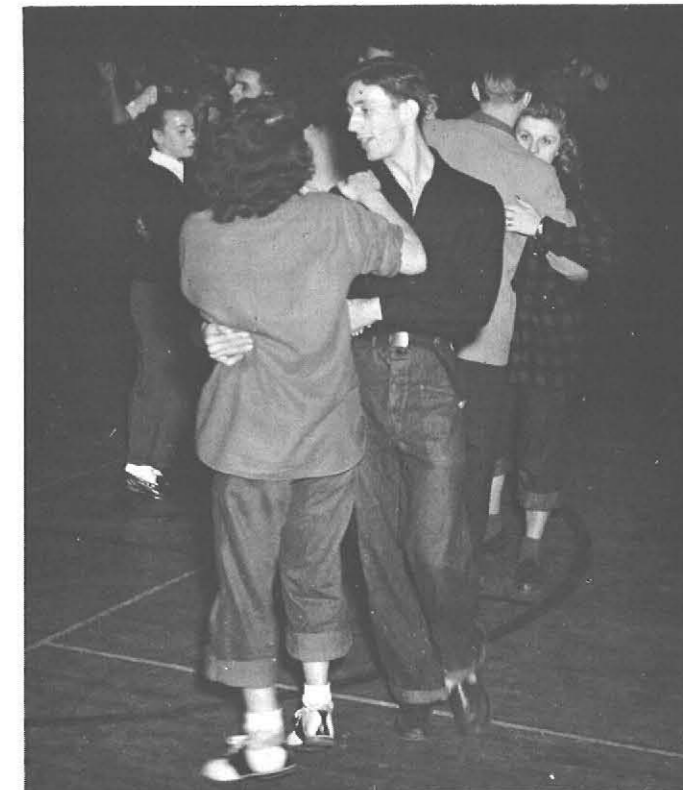
NEWMAN CLUB

Composed of Catholic students on campus Newman Club is the largest organization at State. Being national in scope, the club has been holding joint socials with U.B. and supper meetings. Two delegates were sent to the national convention last August in Chicago. The group has been proud of its well-attended dances, and this year's "Twilight Twirl" was another success for Newman Club. The spiritual goal of Newman Club is attained through monthly communion breakfasts and annual spring retreats with U.B.



STUDENT CHRISTIAN ASSOCIATION

The Student Christian Association was created on campus this year to meet the religious needs of Protestant students. It has carried out an active three-fold program—worship, study, action—S.C.A.





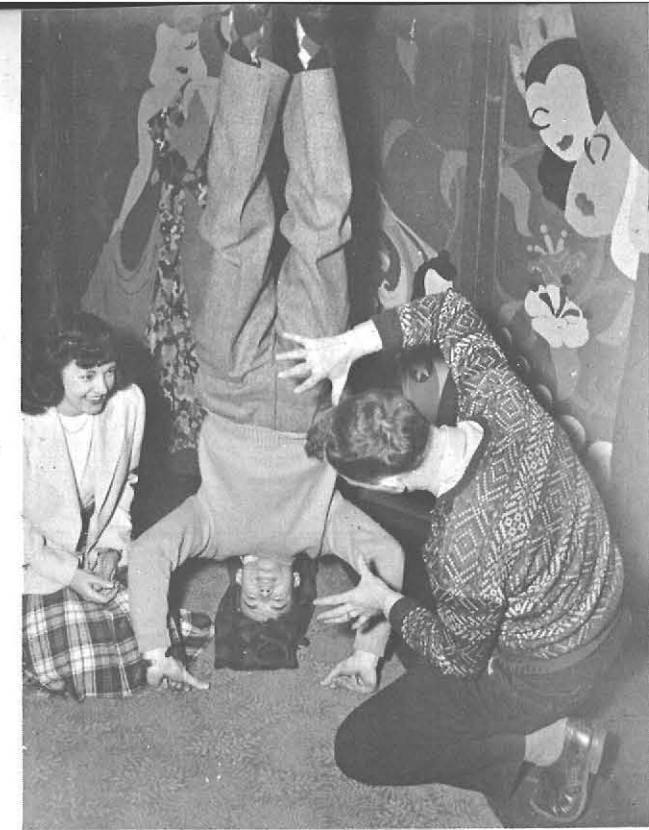
INTER-VARSITY CHRISTIAN FELLOWSHIP

The Inter-Varsity Christian Fellowship movement has its roots back in Cambridge University of eighteenth-century England. Since then it has been transmitted to colleges the world over, coming to America from Canada. One of the chief aims of each I.V.C.F. chapter is to make the Scriptures as familiar a part of a student's life as his textbooks or the daily newspaper. Through Bible studies, prayer meetings and discussion groups, I.V.C.F. encourages its members to rely upon God and His Word and to seek God's purpose and plan for their own lives

AKIBA

Three years old, Akiba strives for the stimulation and advancement of social, cultural, and religious activities in regard to Judaism. Akiba endeavors for abatement of racial intolerance and prejudices by creating a most tolerant, brotherly attitude among fellow college students. This year the club has become affiliated with Hillel, a nationwide organization, and various programs have been held in conjunction with Hillel at U.B. Thus Akiba grows





ELMS

This Elms is our college annual. In this, the 1947 Elms, the editors, the staff, the advisors have tried, through photographs, written comments and artistic layouts, to weld for you the hopes, the traditions, the very best of our college



HANDBOOK



The Handbook offers to all freshmen a written picture of the activities, the functions, and the accepted regulations of their college. Through it, new students may make their first acquaintance with campus organizations and facilities; with college songs and traditions; with class and club officers; with New York State College for Teachers at Buffalo. The Handbook is an index to off-campus religious and cultural facilities for out-of-towners. This compact guide of the college and city is presented to newcomers on registration day. During Freshmen Dazing they quickly learn to realize its full value as they quote "en toto" to sophomore superiors. Then the Handbook is tucked safely into pocket or notebook, always available for future information, for future service to our students

RECORD

The Record has attempted, in this its thirty-eighth volume, to become truly your college newspaper. The Record staff presented and interpreted student news and opinion. The Record headlined our college sports, our dances, our seventy-fifth anniversary. Its editorial page brought current issues to the attention of the entire college. In its new service, Letters to the Editor, The Record directly presented student ideas and views. The short-story contest, sponsored by Nu Lambda Sigma and The Record, offered an opportunity to all who were interested to have their creative work published; it made available to the entire school the work of our own students. The Record is our newspaper; in this and all years it reflects for us our actions, our thoughts, our college





CASTING HALL

What's in a name? Well if you're referring to Casting Hall there's a great implication. Casting Hall—a long sequence of activities leading to the cast, the stage, the productions. Here is an organization that is maintained by the blending of numerous committees; of makeup and costumes, properties; of stage hands, ushers, typists and publicity managers. The group, under the direction of Mina S. Goossen, gives two public performances and each semester dramatizes a one-act play in convocation. Casting Hall is the name of a cultural organization that has developed dramatic knowledge and criticism on campus



DANCE CLUB

For any woman on campus sincerely interested in dancing, despite the fact she may have had no previous guidance, the Dance Club provides weekly meetings for intensive training in exercises and dance steps in ballet, modern dance and folk dances. This year tap work was introduced and there was a more concentrated effort in the field of creative dancing. The Dance Club, which is operated entirely by student members, performs in cooperation with other campus activities



ART KRAFT KLUB

Although membership in Art Kraft Klub is limited, it is open to students in all departments who are interested in promoting character, leadership, and achievement through creative efforts. This year, nineteen new members proudly wear the coveted A.K.K. pin. Very informal meetings, Klub 1300, Baby Picture contest, peanut sales, Egyptian themed dance and Esrever Ecnad (Reverse Dance) highlighted the year's activities. Supplementing these are the scholarship award and the supervision of bulletin boards which Art Kraft Klub offers to the campus. With us—it's "O.K.—A.K.K."





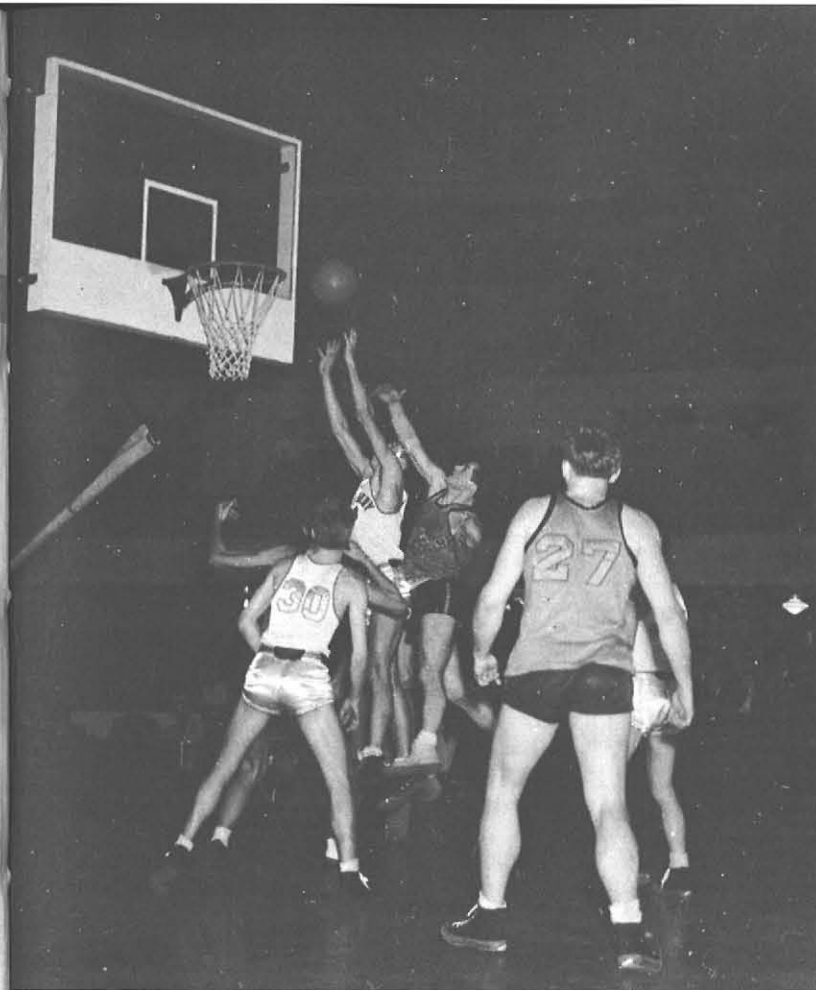
ART EDUCATION CLUB

Palette in hand, and much attention toward social activities the members of the Art Education Club attend meetings designed to stimulate art experience and promote social situations. Organized specifically for students in the Art Education Department the members plan the annual auction and Friday night dance. Their attractive box in Student Center always holds plans for their meetings

FRESHMAN WOMEN'S GLEE CLUB

"Service in Song"—the purpose of the Freshmen Women's Glee Club It is a group always prepared to serve the college musically and does so annually at the Christmas Play, Christmas Concert, Lenten Services, and Spring Musicale. Fall tryouts insure the club of select voices, and dependable members have secured for the organization an enviable reputation. Here we have culture in music





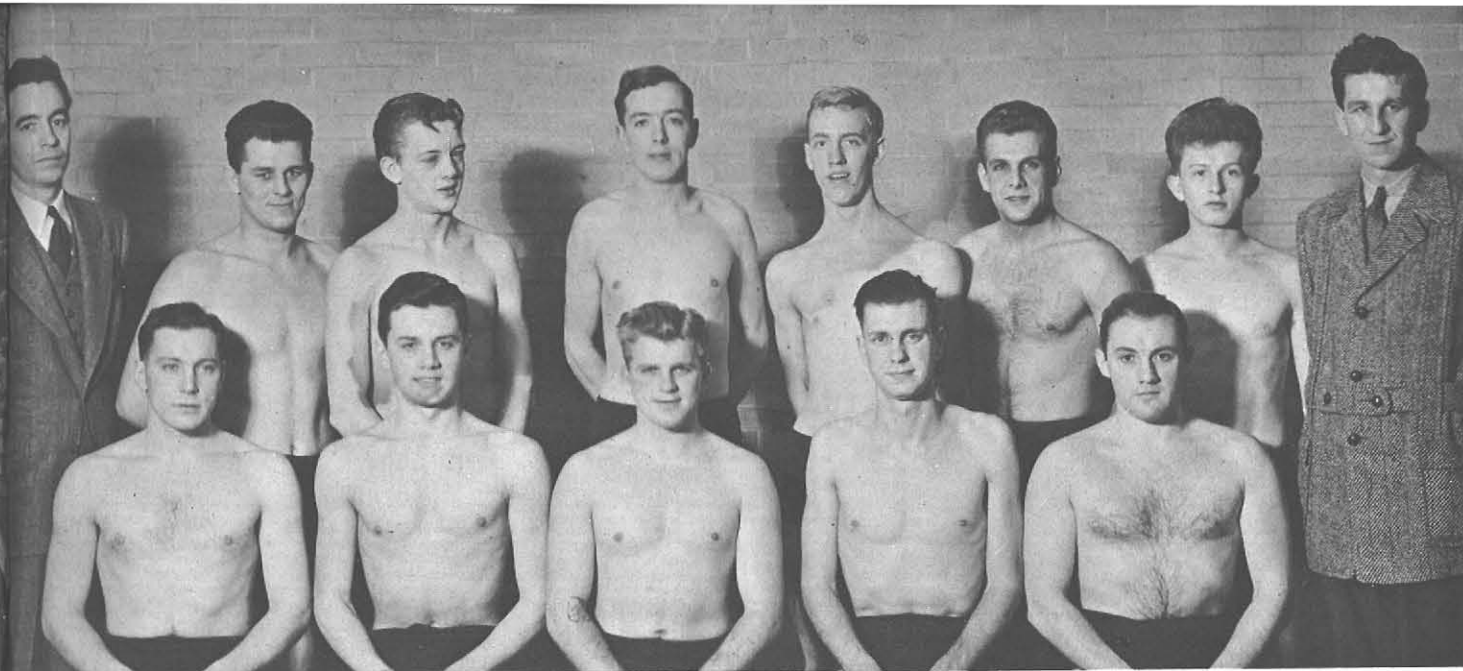
SPORTS

"Var - sity! Vic - t - ory! Varsity — Victory —, Fight, TEAM, Fight!" That's the cry of State's cheerleaders as they rush out onto the floor—and that's our cry for the cheerleaders, who this year have done so much in fostering school spirit at sports events. They have shown State proud at games with their cries of VICTORY and their orange S's flashing the signal "fight" to the gallant team. Through hours of practice, cases of laryngitis, and sore muscles, these dozen students have not only survived, but given spirited service to our college athletics





TRACK

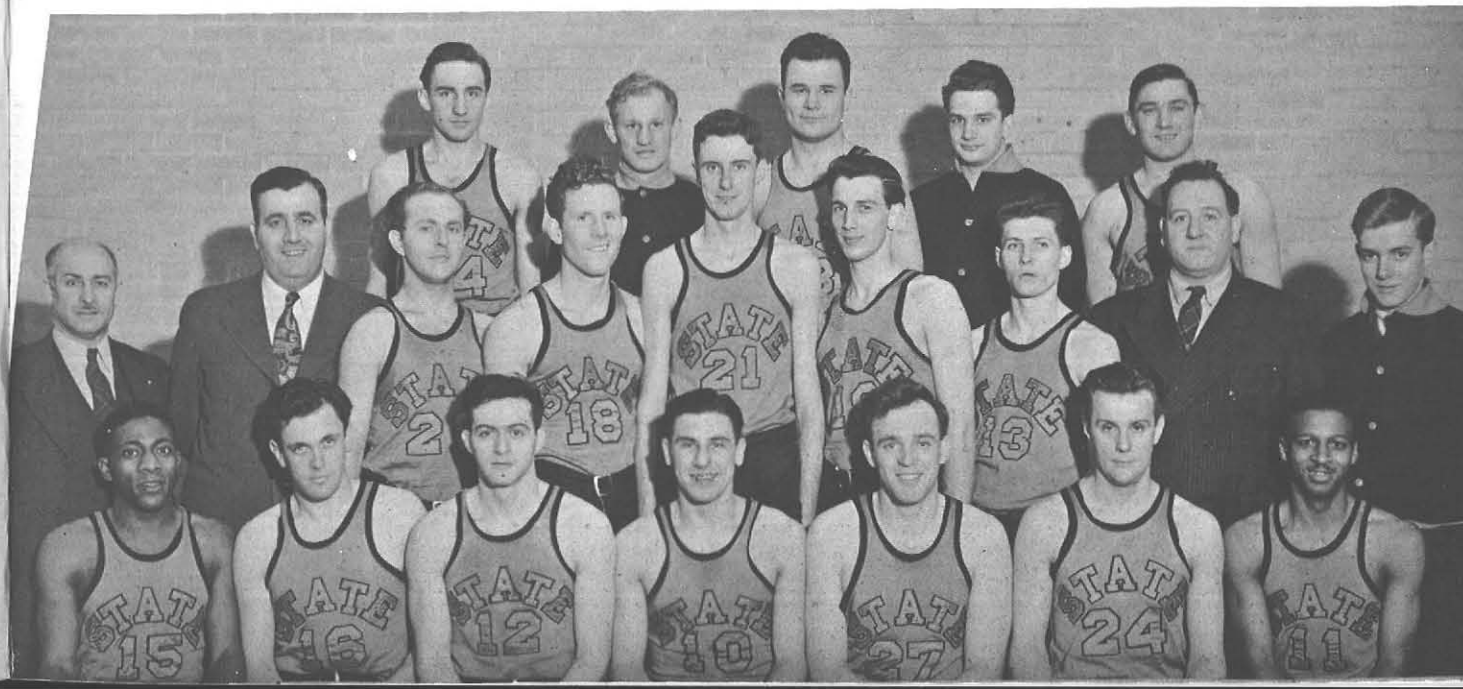


SWIMMING

SOCCER



BASKETBALL





SENIOR WOMEN'S GLEE CLUB

It's always "preparation" in the Senior Women's Glee Club! And if it's not a concert at Kleinhans Music Hall or thirty minutes broadcasting over WBEN, it's assembly programs, Lenten Services, or the Spring Musicale! We have watched and we have noticed, they're harmonious not only in voice but in costume;—one time all 120 appear in formals and then again it might be red — white — and — blue campus outfits. Yes, it's always preparation in the Senior Women's Glee Club—and always enjoyment for those fortunate enough to hear them sing

The birth of the Athletic Association coincides with the beginning of a sports program at State. The first formal constitution, giving the student body control of all phases of athletics, was completed in 1936. During the season 1938-1939, the Athletic Council was created to organize the program and put sports on a higher collegiate level and to encourage greater participation. War took the men from campus, and the women carried out the limited program until the spring of 1946, when our men re-enrolled and a new constitution was written. The birth of the athletic tax, and its acceptance by the student body, made possible the picture of greater programs and better teams at State. September's registration, the greatest ever, provided the material for an athletic program including well-manned varsities, "J.V." teams, additions to the coaching staffs, improved facilities and games in Memorial Auditorium; all of which helped to put our Buffalo State out in front,—a college with an active sports program

ATHLETIC ASSOCIATION



A CAPELLA CHOIR

Performances at out-of-town colleges, local religious centers, Kleinhans Music Hall and over our local radio stations, have shown us what an accomplished organization our A Capella Choir really is. We of State are proud of the select male and female voices numbering over fifty, which compose this outstanding musical group. Truly, here is beauty—here is power—here is real achievement





MEN'S GLEE CLUB

Men's Glee Club is not a new organization on campus. This year, however, has been an especially bountiful one for the club. With more men at college than in many years, it has become a larger group than ever before. We at State have deeply enjoyed and appreciated each performance of Men's Glee Club this year



BAND
 "There's a flare of bugles and a ruffle of drums" at college this year. With an increased membership, and new instruments, the BAND has returned to State. Under the direction of bandmaster Coghill, "the cymbals clang and the drums go bang" in assembly programs, at basketball games, and other sports events. "Marching along together," say band members as they look to next year

ORCHESTRA

Forty enthusiastic new members . . . bright new instruments . . . diligent rehearsals . . .
RESULT . . . an orchestra, of which State can well be proud. The orchestra's participation in musical programs and assemblies provided interesting entertainment for the college family. It's good to have the orchestra back in action. Such organized spirit and effective cooperation will bring more pleasant listening at STC





The Pan Hellenic Association, consisting of two representatives, and the presidents of the six national sororities on campus is the organization in which sororities can work together cooperatively. This year, a tea honoring national sorority officers residing in the Buffalo area and the Inter-Sorority Ball were presented by Pan Hellenic Association

PAN-HELLENIC ORGANIZATION

ALPHA SIGMA ALPHA

Alpha Sigma Alpha and red jackets . . . an English hunt and informal parties . . . initiations . . . the Sweetheart Dance and—always activity! Red and white was busy in the extra-curricular program, holding honors scholastically and publicizing New York State College locally and through the national "Phoenix." Aspire, seek, attain; a motto in practice with the Alpha Sigs





ALPHA SIGMA TAU

Have you ever wanted to go on a "World Cruise" or a "Mexican Hayride?" Your wish could have been granted had you been a rushee to either of the Alpha Tau's rush parties. Then the rushees became pledges, — and the pledges became actives,—and the actives served sorority in the Pine Hill Mountain Social Service project and as capable salesgirls in the annual White Rose Sale at State. Fraternal spirit was exemplified in all activities including bowling and bridge parties and usual "sisterly" advice sessions. It was a busy, useful year for Alpha Tau's



DELTA SIGMA EPSILON

As African Tom-Toms beat out a royal "head-hunter's" welcome, the Upsilon chapter of D.S.E. went native in a "Safari" rush party. With eighty Deltas on campus this year, the sorority services and duties became more extensive, and among the activities were: the giving of gifts to European War orphans, musical entertainment, dramatic acts, and baked goods for the patients at the Marine Hospital. With the pledge hayride, the riotous Christmas party, and the inimitable "Beer Garden" at State Fair, the Delta Sigs rounded out a year filled to the hilt with State spirit and sisterly love . . . And who can forget all that singing, shouting and laughter at the Delta Sig CAROUSEL in May . . . Sure'n the wearin' of the GREEN is a proud fashion



PI KAPPA SIGMA

Pi Kappa Sigma has been one of the most alert and enthusiastic organizations at the college this year; alert in campus service, in pledging and initiation activities; enthusiastic in social activities within the chapter and for the entire school. At their "Mardi Gras," the Pi Kaps crowned the first king of State College for Teachers, amid palms and gay Mardi Gras trimmings. Lively Pi Kaps set up their traditional apple booth and sold huge, sticky cinnamon coated apples to all State Fair go-ers. State co-eds were adorned with gardenias this spring from Pi Kappa Sigma's annual sale in Student Center. Yes, Pi Kappa Sigma has been one of the most alert and enthusiastic organizations at the college this year and looks forward to an equally successful future





SIGMA SIGMA SIGMA

This year at National Convention Tri-Sigma will celebrate her fiftieth birthday. Zetas are looking forward to the celebration as a wonderful end to a bang-up year and hope to be well represented at the Williamsburg Conclave. In their Sigma book of memories the girls in the purple and white have recorded such memorable events as their Greek Rush Party, Toledo Regional Meet, Tea at the Statler, Spring Dance and the ever impressive Founder's Day, pledging and initiation ceremonies. Tri-Sigmas will be remembered this year for their workers and leaders in campus organizations, social service at Westminster House, support of their Belgian baby, as well as fruit baskets, books and magazines for the Marine Hospital at Christmas



THETA SIGMA UPSILON

We here at State are proud of the girls in dusty-rose—the Theta Sig's. Among the many activities they are famous for is their annual Cider-and-Donut sale in Student Center. This year the girls have taken on the project of making scrap-books for crippled children and also selling T.B. Christmas seals. For extending hospitality to faculty members and other sorority women, Theta Sig has its Courtesy Day Tea held in January. At State Fair the group holds its traditional Chamber of Horrors and the screams, laughter and howls echo throughout the gym

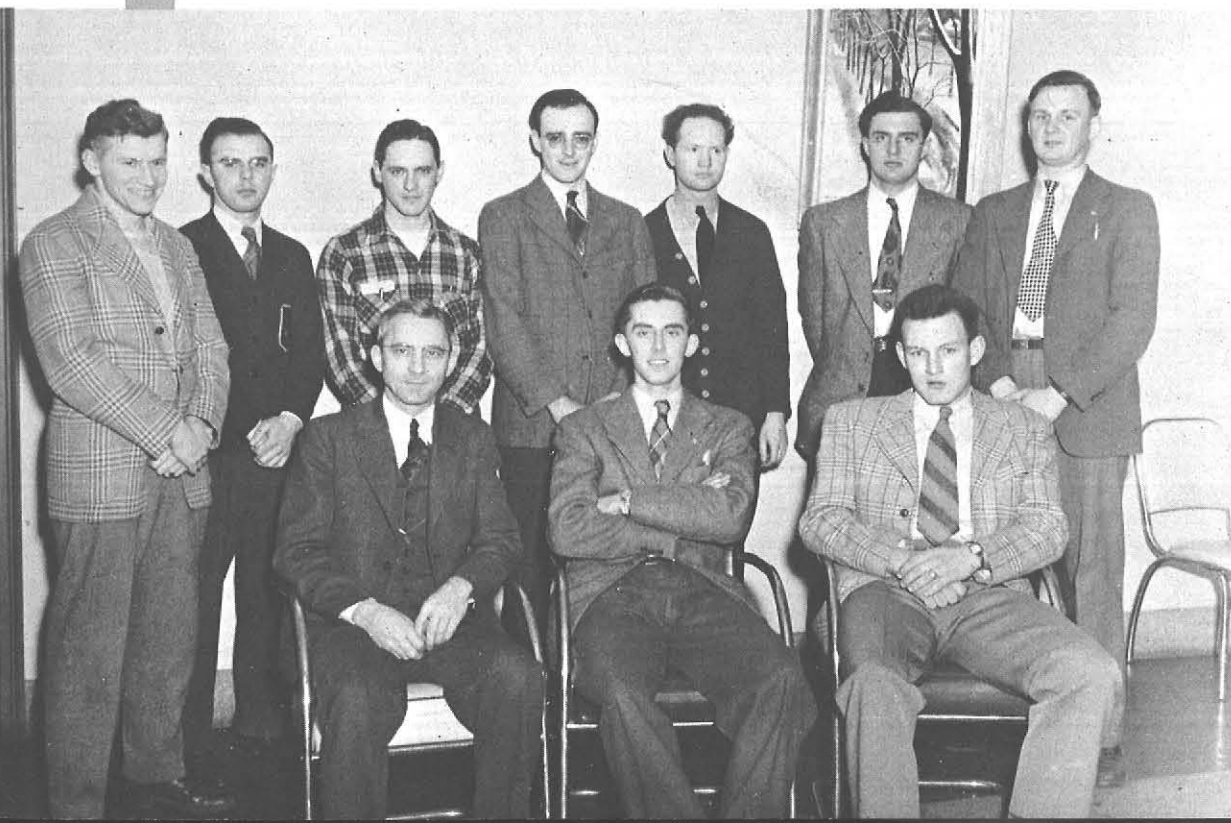


DELTA KAPPA

Once again, Delta Kappa fraternity proudly presented the Student Directory, the student's guide to a well-seasoned semester. This year's edition is the largest and most complete in our history. Moving-up Day and Delta Kappa's tribute to our Alma Mater was expressed in the presentation of the DK award for scholarship, leadership and character—and the Delta Kappa Athletic Award to the graduating senior excelling in sports. Fraternal participation and co-operation may be exemplified most vividly in the completion of the mirror-bedecked, revolving ball proudly exhibited at the annual dance "The Crystal Ball." Surely this is one of the memories we shall carry with us through the many years to come

PSI PHI

With State's return to post-war "normalcy," Psi Phi has met the stride. Founded in Binghamton, N. Y. in 1920, a wealth of tradition has since been built and perpetuated across the years, basing itself upon the fraternity's foundations of Honor, Generosity, and Fidelity. Notable has been the custom of late years for Psi Phi to sponsor State Night at one of the hockey games in Memorial Auditorium, while the annual Spring Dance is an occasion which has linked the name of Psi Phi with that of our college in a band of friendship





SIGMA TAU GAMMA

Nineteen forty-seven, and Sigma Tau Gamma participates in campus services, sports and other extra-curricular activities. Linger in the memories of all are the most successful skating party and the annual White Rose Dance—always a highlight in our social calendar. An artistic job of wall-papering has brightened up the chapter house, providing a gay background for informal parties, and the return of former Sig Tau brothers from military service has engendered new friendships and renewed old ones, continually enlarging fraternal fellowship





75th ANNIVERSARY CELEBRATION

... Everybody knew about the laying of the cornerstone ... to THIS we celebrate. For three-quarters of a century men and women have passed through her halls, shared in her strides toward progress and absorbed the youth, gaiety, and life she offered ... We look back upon these seventy-five years of growth and memories ... We look ahead to seventy-five years of pride and progress at State



FROSH CAMP

Yippee-Yea! Yippee-Yo! Roundup time at Frosh Women and Men's Camps and "Campus Prairie," with 250 girls and fellows as the "buck-a-roos." The men from camp left their "Range" and visited the gals who were at Forty Acres — while the "tenderfeet" from "Campus Prairie" participated in "Stall Squalls" and "Prairie Doin's." 'Twas a terrific week-end for friendship. 'Twas a terrific weekend for a real beginning in college. Frosh Campers thus brought back a new spirit to our college; their "home on the range"—the spirit of making, and keeping friends

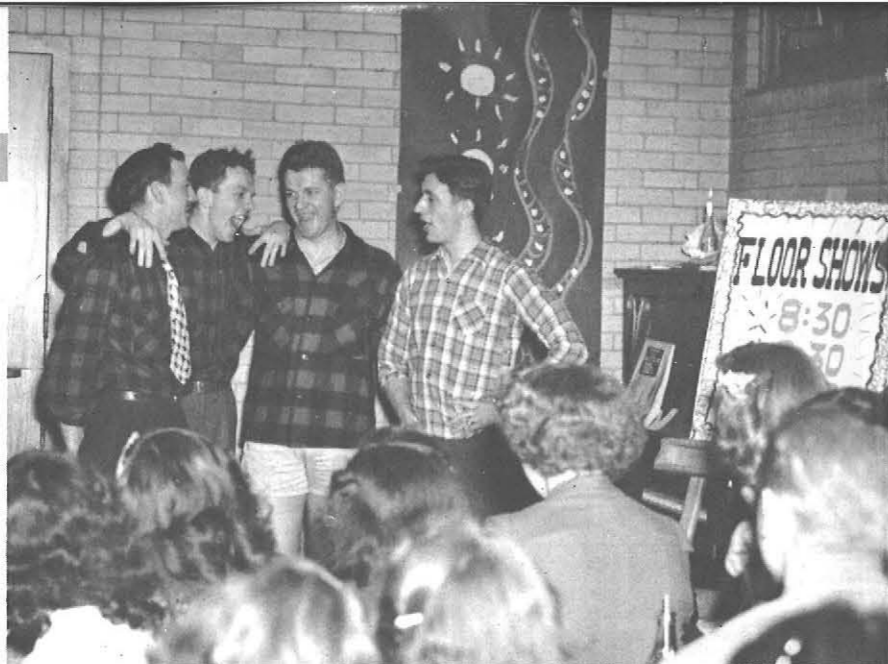




HOLLY HANGING

Santa Claus . . . arms filled with packages . . . scenes of the nativity . . . turkey and plum pudding . . . trees laden with gifts and bright trimmings . . . these things remind us of Christmas. Mistletoe in Student Center . . . silvered organ pipes in the foyer . . . snow scenes in the Social Centers . . . Christmas dinner in the cafeteria . . . caroling through the halls . . . Casting Hall and "The Alien King" . . . crowds in the Co-op . . . pine boughs and holly . . . A WREATH ON THE CENTER DOOR . . . these things remind us of Holly Hanging. Sponsored by Alpha, the annual Holly Hanging celebration arouses the Christmas spirit in almost every student at college. Few can afford to miss the singing and laughter, the anticipation and suspense while waiting for the announcement of the winning class to hang the huge wreath on the front center door of State. Holly Hanging lives on and on as one of State's finest, inspiring and most beautiful traditions

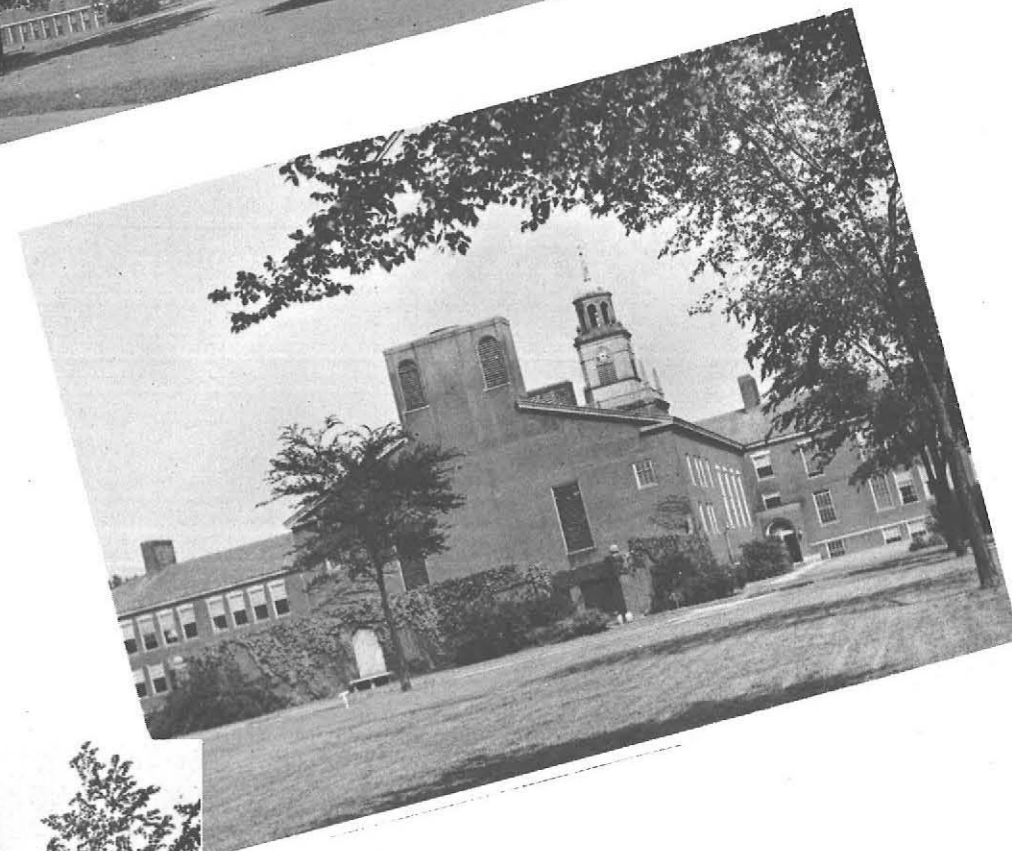
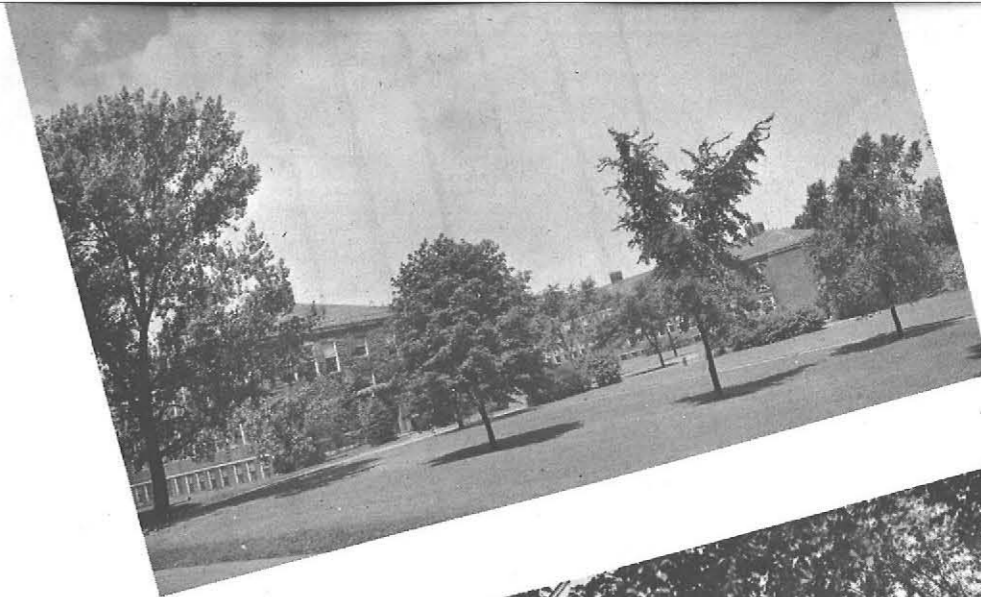




STATE FAIR

INTERCLASS SING

Traditions at State are treasured possessions of all those who pass the halls in our college. Heading these traditions is Interclass Sing—a moving and co-operative activity where ability and originality shine forth. This year the class of 1948 won the Sing with their song, "We Build Anew," dedicated to the new buildings and the future of our New York State College for Teachers at Buffalo



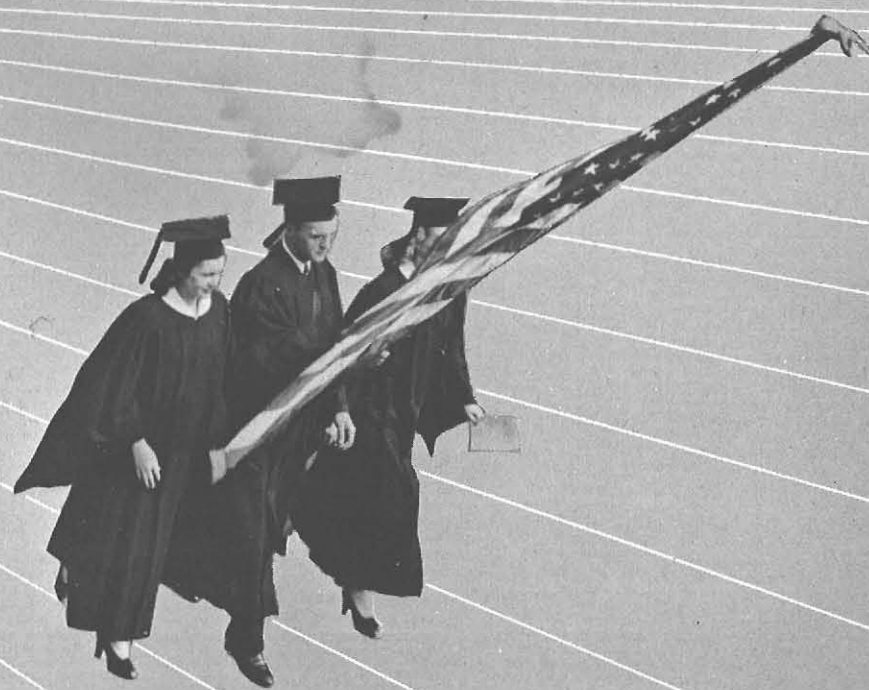
COLLEGE VIEWS



CAMPUS VIEWS



"let no prejudice be a shell
let directness and ability tell—
and — they will be liberal."



"our very BEST—
Chime ever BELL . . ."



FRESHMAN CLASS

September 9, 1946, marked a red-letter day for over 500 freshmen, Yes, it was the first day of college. We entered State bewildered and excited for this was just the beginning! Frosh Camp, the first week-end of the school year enabled many fellows and girls to get to know the upper-classmen. None of us will ever forget that week-end. Wonderful . . . it couldn't be beaten! "Frosh dazing" initiated us into the swing of college life. For three days we honored the sophomores. "Their wish was our command." Millions of campaign posters at election-time—RESULT—four capable, effective leaders. Creative and organized spirit at Christmas time—RESULT—a terrific toyland in the former library. Happy, active, and sincere class committees—RESULT—a class that progresses with spirit "en masse"—this our Class of 1950





SOPHOMORE CLASS

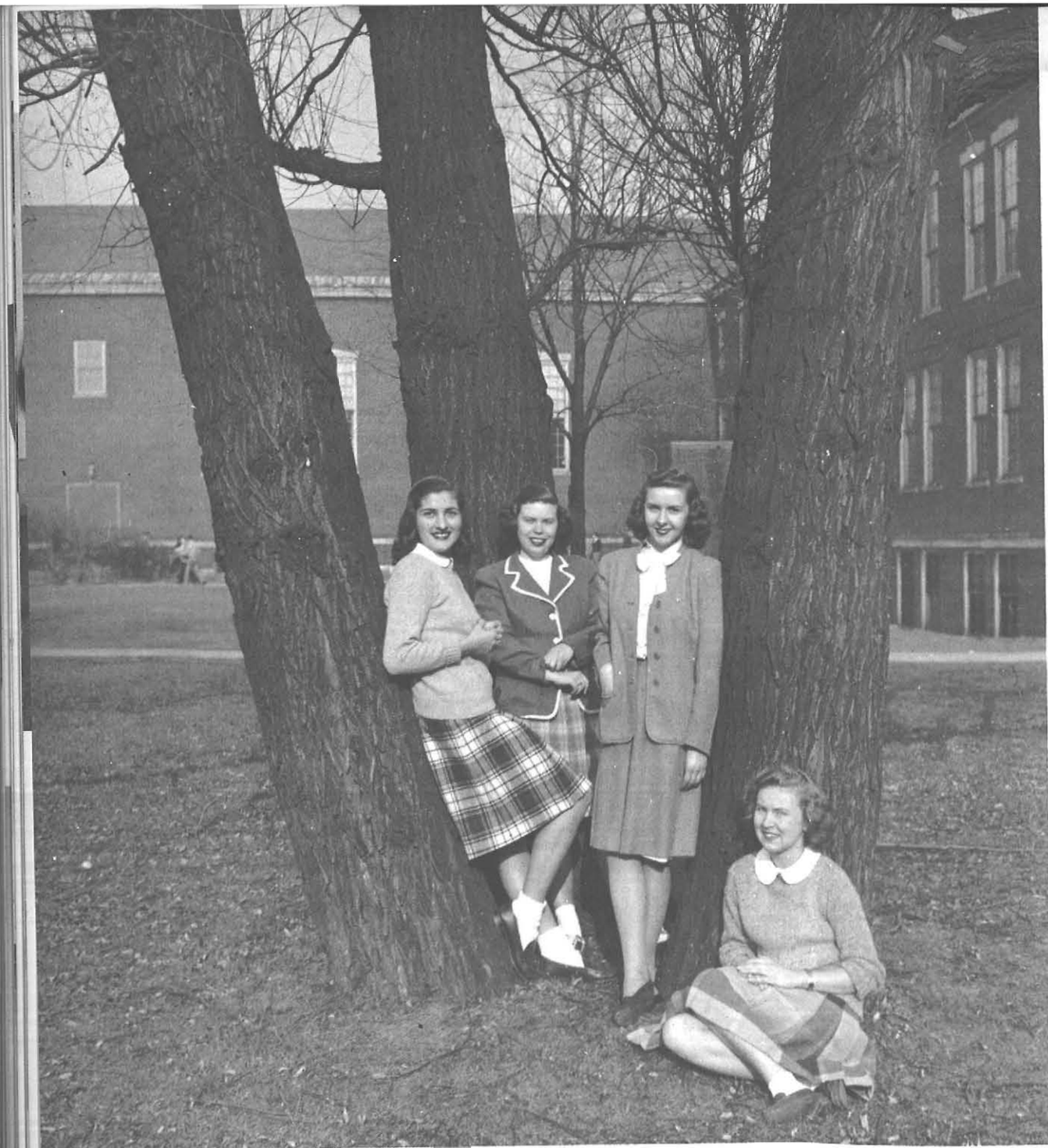
Vacation over, our mighty sophomore class came back to campus with fond memories and great ambitions. Those new Frosh are wonderful sports! They met Father Time during court trials and survived all punishments while we laughed lustily when the class president lost his outer garment. Soon it was term papers, midnight oil, and exams, all interrupted by our all-out support of the powerful new basketball team in its games at the Aud. Second semester found us making this new resolution, "more classwork concentration" . . . that is 'till spring. Beautiful spring—snow disappears—romance re-appears, and a new different soph assembly. State Fair had every sophomore on a committee proving that class spirit was an outstanding feature of our famed sophomore group. Moving-Up day with its beauty and beauties tells us our SOPH days are but memories—we look ahead





JUNIOR CLASS

We look back over college traditions . . . INTERCLASS SING—two years of defeat, two stiff weeks of rehearsal, and none of it mattered on that glorious morning—for we won! We'll never forget "We Build Anew" or the victory celebration in the aud . . . JUNIOR PROM—"Autumn Nocturne" and tickets sold like mad. Tuxes came out of mothballs and took their places next to lovely formal gowns in the Grand Promenade . . . programs and favors went into scrap books and memories of Autumn Nocturne—into our hearts . . . HOLLY HANGING—Christmas in the air and juniors in the Student Center and then . . . STATE FAIR—we liked being there while something new was born from something old . . . MOVING-UP DAY—a special event—beautiful in every detail and the special thrill of our own class float! . . . TRADITIONS AND THEN SOME—junior counseling, class assembly, sports events—cheer-leading, dances, club meetings, meetings and more MEETINGS . . . That's the picture we frame as "Last Year" . . . This Year our theme is "SENIORS"



SENIOR CLASS

Nineteen forty-three . . . Enter Class of '47 . . . Spirit of four years to come . . . Frosh camp, frosh daze, friendships, fun . . . Working . . . studying . . . on the run . . . Gay Nineties assembly . . . Class Sing won . . . Second place—Holly Hanging . . . College—began. **Nineteen forty-four** . . . Change in manner . . . Smooth and sure . . . Sophisticated Sophomore . . . Frosh Hazing days in Army style . . . Letters . . . post-cards . . . servicemen . . . Holly Hanging—second place again . . . Toboggan parties . . . dances . . . fun . . . Year—well done . . . **Nineteen forty-five** . . . Upper classmen—you can tell . . . Hurry . . . Study hard . . . work well . . . Prom—"Snow Whirl" . . . Much Snow fell . . . Men returning . . . welcome home . . . Class Banquet . . . Men . . . No more to roam . . . Mid-semesters . . . Moving Up Day . . . At last . . . we're Seniors . . . Shout, "Hurray" . . . **Nineteen forty-six** . . . Year of hope, joy and farewell . . . Hail STC, we've loved thee well . . . Work . . . Study . . . purpose well in mind . . . We're teachers now . . . Jobs to find . . . Fond traditions clung to fast . . . Holly Hanging—won at last . . . Moving UP . . . Class Day . . . Caps and gowns—sheepskin . . . College—past . . . **Nineteen forty-seven** . . . Graduates at last . . .





ALBERT ABGOTT
B. S. in Industrial Arts Education



BETTY JO ANDERSON
B.S. in Art Education



KATHRYN ANDERSON
B.S. in Education



ELAINE ANSELL
B.S. in Home Economics



HELEN ADAMCZAK
B.S. in Art Education

LEONA ADELMANN
B.S. in Education



EVA ANTHONY
B.S. in Education



JOHN ARMSTRONG
B.S. in Industrial Arts Education



MARY ANN BARTON
B.S. in Home Economics



BARBARA BAUMER
B.S. in Home Economics



GRACE BELTZER
B.S. in Art Education



WANDA BEILING
B.S. in Home Economics



PAULINE BINGENHEIMER
B.S. in Art Education



NAOMI BERGER
B.S. in Art Education

JOSEPH BATES
B.S. in Industrial Arts Education



CONSTANCE BELL
B.S. in Art Education



ARLENE BOICE
B.S. in Home Economics



GRETCHEN BUCHHOLZ
B.S. in Education



HORTENSE BUTTS
B.S. in Education



MARY CALLAN
B.S. in Education



JANET CAMPBELL
B.S. in Education



JOHN BOLM
B.S. in Industrial Arts Education



CHARLES BRADY
B.S. in Industrial Arts Education



ALICE BROWN
B.S. in Home Economics

MARILYN CAMPBELL
B.S. in Home Economics





ELLIOTT CARLSON
B.S. in Industrial Arts Education



ANTHONY CAVALIERI
B.S. in Industrial Arts Education



RUDOLPH CHERKAUER
B.S. in Education



GENEVIEVE CHIAVARO
B.S. in Home Economics



WILLIAM CLYDESDALE
B.S. in Art Education



VASHTI COLEMAN
B.S. in Education



HOWARD COLLINS
B.S. in Art Education

ALBERT CLARKE
B.S. in Industrial Arts Education



CHARLES CLEMONS
B.S. in Industrial Arts Education



ELLEN COLLINS
B.S. in Education



KERMIT CRISSEY
B.S. in Education



CHARLES CUMBO
B.S. in Industrial Arts Education



ELIZABETH CURTIN
B.S. in Education



HILDA DAY
B.S. in Home Economics



ERNESTA DEL PRINCE
B.S. in Education



JESSIE DE SORMO
B.S. in Education



GLORIA DI CESARE
B.S. in Education



ROBERT DICKINSON
B.S. in Industrial Arts Education

JEANNE DILGER
B.S. in Art Education



NORMA DI PIRRO
B.S. in Home Economics



HELEN JANE DOLAN
B.S. in Education



JEANNE DORMAN
B.S. in Education

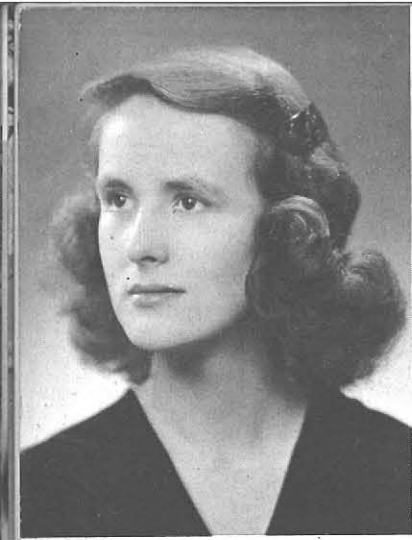


JOSEPH DORCZAK
B.S. in Industrial Arts Education



ELEANOR DOMBROWSKI
B.S. in Education





NANCY DUNN
B.S. in Home Economics



DOROTHY EISS
B.S. in Art Education



ARLENE EBERT
B.S. in Home Economics



MARGARET ENGELMANN
B.S. in Home Economics

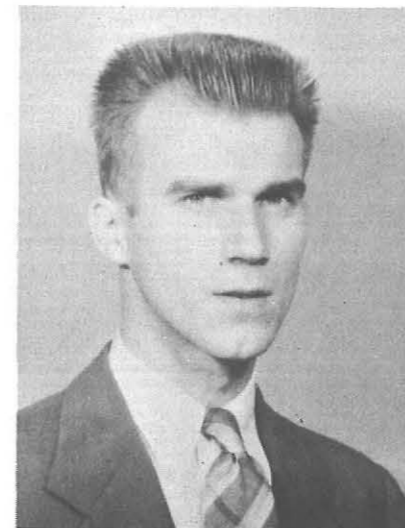


LOIS EAMES
B.S. in Education

DOROTHY EBERHARDT
B.S. in Home Economics



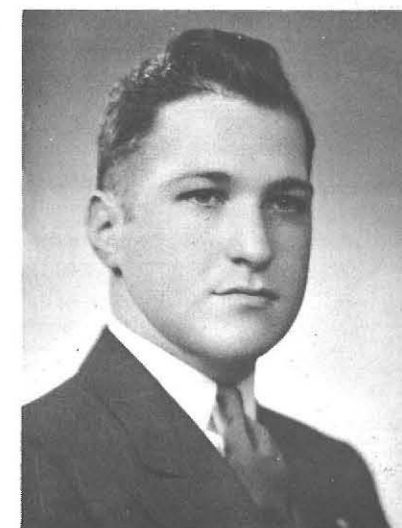
MAYNARD FELDMAN
B.S. in Industrial Arts Education



BETTY ENNESSER
B.S. in Education



WARREN FRAHN
B.S. in Industrial Arts Education





CHARLES FOSTER
B.S. in Industrial Arts Education



MARALYN GABBEY
B.S. in Education



JOAN FRANK
B.S. in Art Education



JANE GALLUP
B.S. in Education

BENJAMIN GARELICK
B.S. in Industrial Arts Education



MIRIAM FRANKENFELD
B.S. in Education



JEAN FITZHENRY
B.S. in Home Economics



MARGARET GAU
B.S. in Home Economics





ALTHEA GILLMEISTER
B.S. in Home Economics



STEPHEN GODFREY
B.S. in Industrial Arts Education



MIRIAM GOTTHELF
B.S. in Education



THADDEUS GREENDA
B.S. in Industrial Arts
Education

BEATRICE GAY
B.S. in Education



ANDREW GRZYWA
B.S. in Education



HARRIET GERBER
B.S. in Education



PATRICIA GILLIAN
B.S. in Education



MARY FRANCES HACKFORD
B.S. in Education



JEANNE HALEY
B.S. in Education



RUTH HALEY
B.S. in Home Economics



VIOLA HALL
B.S. in Education



DOROTHY HARE
B.S. in Home Economics

CLEMENT HERMAN
B.S. in Industrial Arts Education

ALICE HOFFELT
B.S. in Home Economics



DONALD HARTMAN
B.S. in Industrial Arts Education

DANIEL HEALY
B.S. in Education





HORTENSE HOFFMAN
B.S. in Education



IRENE IGNATZ
B.S. in Art Education



MARY JACOBS
B.S. in Industrial Arts Education



GRACE JANKE
B.S. in Education



RUTH JOERG
B.S. in Education



MARY ELLEN HURLEY
B.S. in Education

MARY IERVOLINO
B.S. in Education





CELESTINE KACZMAREK
B.S. in Home Economics



RAYMOND KLAS
B.S. in Industrial Arts Education



JOHN KNAPP
B.S. in Education

VERA KOHLING
B.S. in Education



GERTRUDE KOOP
B.S. in Home Economics



VICTORIA KOWALSKI
B.S. in Education



VIRGINIA KRUK
B.S. in Education



WILMA KUNEY
B.S. in Home Economics



VIRGINIA KUHN
B.S. in Education





ANN LA CORTE
B.S. in Home Economics



HELEN LATZA
B.S. in Education



BARBARA LA VIGNE
B.S. in Art Education



BERTRAM LEARMAN
B.S. in Industrial Arts Education



LAREE LADANYI
B.S. in Home Economics

BETTY LA REAU
B.S. in Home Economics



GERTRUDE LESCH
B.S. in Home Economics



EMMA LE VERME
B.S. in Education



PATRICIA McCORMICK
B.S. in Education



ELEANOR McKENNA
B.S. in Education

SHIRLEY MacLACHLAN
B.S. in Education



MAURA LYONS
B.S. in Home Economics



LOUISE McNINCH
B.S. in Home Economics
JANE McRAE
B.S. in Home Economics



MARY MACALUSO
B.S. in Education



MARION MANDLEY
B.S. in Education





WANDA MARKOWSKA
B.S. in Home Economics



NANCY MEARIG
B.S. in Home Economics



MARY ELIZABETH MASTERSON
B.S. in Education



CAROL MASTERENKO
B.S. in Home Economics

→
Pictures switched
Annette Marx
and
← Wanda Markowska



ANNETTE MARX
B.S. in Home Economics

GLORIA MICHAELIS
B.S. in Education



MARY ELLEN MARION
B.S. in Home Economics



ALBERT MAROONE
B.S. in Industrial Arts Education



ROSE MIGLIORE
B.S. in Home Economics



CHARLOTTE MILLER
B.S. in Education



JANET MILLER
B.S. in Home Economics



MARIA MOGAVERO
B.S. in Home Economics



JEAN MOORE STRONG
B.S. in Education



MILDRED MONTANARI
B.S. in Education



ANITA MONTESERIN
B.S. in Education



BEATRICE MORRISON
B.S. in Home Economics



EMILY MOULIN
B.S. in Education



ANNE MULLENHOFF
B.S. in Education



HARRY NELSON
B.S. in Industrial Arts Education



JOSEPH NEUHAUSER
B.S. in Art Education



WILMA NICHOLS
B.S. in Education



JOYCE NOBLES
B.S. in Home Economics



MARJORIE MURPHY
B.S. in Home Economics



JEANETTE NAPPA
B.S. in Education



PAULINE NOWAK
B.S. in Education



DANIEL O'DONNELL
B.S. in Industrial Arts Education



ROSALIE OLIVER
B.S. in Education

VRESIDA PARENTIS
B.S. in Home Economics



JOY PATTERSON
B.S. in Education



HELEN PETRIE
B.S. in Home Economics



FLORENCE PILARSKI
B.S. in Education

GEORGE PIEPER
B.S. in Industrial Arts Education





MILTON PLESUR
B.S. in Education



MARY RACZ
B.S. in Education



RITA RADZIK
B.S. in Education



DOROTHY RAWSON
B.S. in Home Economics



VALERIA PONIATOWSKI
B.S. in Education

BARBARA RACE
B.S. in Art Education



MARGARET RENNER
B.S. in Home Economics



BARBARA RICHARDSON
B.S. in Art Education



WERNER ROGERS
B.S. in Industrial Arts Education



EUNICE ROTH
B.S. in Art Education

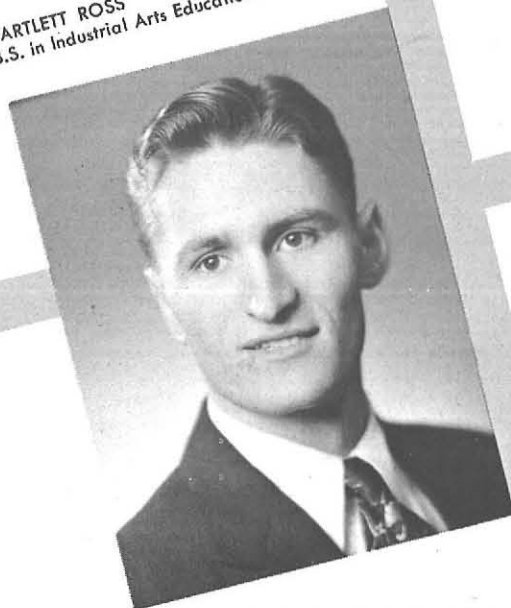


DONALD RUNYAN
B.S. in Education

ROSE RUSSO
B.S. in Education



BARTLETT ROSS
B.S. in Industrial Arts Education

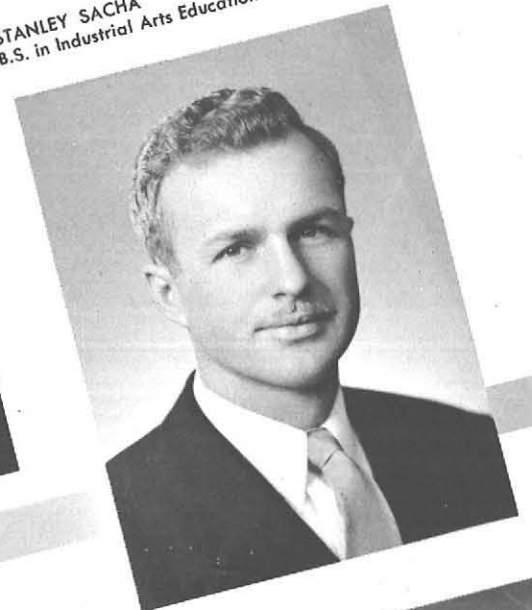


EDWIN RYDEN
B.S. in Industrial Arts Education

BETTY RYEN
B.S. in Home Economics



STANLEY SACHA
B.S. in Industrial Arts Education



MARION SALMON
B.S. in Home Economics





NORMA SCHMID
B.S. in Home Economics



NORINE SCHOY
B.S. in Education



THOMAS SCHREINER
B.S. in Industrial Arts Education



LUELLA SCHUTRUM
B.S. in Home Economics



JOY SANDY
B.S. in Education



LORETTA SCHELBE
B.S. in Home Economics



LOIS SCHEUERLE
B.S. in Education

WILLIAM SDAO
B.S. in Education





CAROL SEGA
B.S. in Education



MARY ELLEN SEIBERT
B.S. in Home Economics



PATRICIA SHAPLEY
B.S. in Education



ELIZABETH SHAW
B.S. in Home Economics



ELIZABETH SICKLES
B.S. in Education

VIRGINIA SHERMAN
B.S. in Education

BETTY SHORT
B.S. in Education



BURTON SILBERMAN
B.S. in Education



DOLORES SIMCOE
B.S. in Education





BARBARA SIMONIAN
B.S. in Education



BARBARA SLOATE
B.S. in Education



ELAINE SMITH
B.S. in Education



ROSAMOND SNYDER
B.S. in Art Education



MARILYN SPENCER
B.S. in Home Economics



DOLORES SKINNER
B.S. in Home Economics



DOROTHY SKORUPSKA
B.S. in Home Economics



HENRY STACHOWICZ
B.S. in Industrial Arts Education



MERVIN STAINES
B.S. in Industrial Arts Education



EVELINE STEFFAN
B.S. in Art Education

RUTH STICKNEY
B.S. in Education



GRACE STRANGIO
B.S. in Home Economics



GRACE SWANNIE
B.S. in Home Economics



MARCELLA TATU
B.S. in Education

NORMA TAYLOR
B.S. in Home Economics



JOHN SYKES
B.S. in Industrial Arts Education



LORETTA TEDESCO
B.S. in Art Education



ELEANOR TOMIC
B.S. in Home Economics



EDGAR TULLOCH
B.S. in Industrial Arts Education



JEAN VANDERGRIFT
B.S. in Education



HELEN THORNELL
B.S. in Home Economics

MARGARET TIGHE
B.S. in Home Economics



LOUIS VASTOLA
B.S. in Industrial Arts Education



ROLLIN VOGAN
B.S. in Industrial Arts Education



DONALD VOGHT
B.S. in Industrial Arts Education



NANCY WEISBECK
B.S. in Home Economics



NITA WEITZMAN
B.S. in Education

MARY GRAFF WELLEN
B.S. in Education



ROBERT WATSON
B.S. in Education



RUTH WESTPHAL
B.S. in Education



JANET WHALLEY
B.S. in Art Education



LOIS WHEELER
B.S. in Education



JEAN WHITING
B.S. in Education



JOHN WOLF
B.S. in Education



ANNA WOZNIAK
B.S. in Education



ELIZABETH YOUNG
B.S. in Education



RUTH YOUNGWIRTH
B.S. in Education



LORRAINE WILLIAMS
B.S. in Education



BARBARA WILSON ROUTH
B.S. in Home Economics



LEITA WOELLER
B.S. in Education

MARIE ZARCONE
B.S. in Education



RUTH ZELLER
B.S. in Home Economics



ADDITIONAL GRADUATES

HOWARD BARRETT.....B.S. in Education
IRENE BRANT.....B.S. in Education
MICHAEL BRENNAN.....B.S. in Education
CLARA CLEMONS.....B.S. in Education
ANNA MAE FOX.....B.S. in Education
FRANCES FRANKE.....B.S. in Education
DOROTHY HECHT.....B.S. in Education
ALICE HERMAN.....B.S. in Art Education
DONALD KUHNS.....B.S. in Industrial Arts Education
FLORENCE MERRITT.....B.S. in Education
DOROTHY RYDER.....B.S. in Education
LOUISE SCHAEFER.....B.S. in Education
JAMES SEATTER.....B.S. in Industrial Arts Education
FRED SIXT.....B.S. in Industrial Arts Education
JOSEPHINE SPENCER.....B.S. in Education
CHESTER SWIERCZYNSKI.....B.S. in Art Education
GLADYS ULMER.....B.S. in Education
FLORENCE WEIMER.....B.S. in Education