

State University of New York College at Buffalo - Buffalo State University

Digital Commons at Buffalo State

Elms, Student Yearbooks

Buffalo State Archives: History of the Institution

1-5-1944

The Elms 1944

Buffalo State College

Follow this and additional works at: <https://digitalcommons.buffalostate.edu/theelms>



Part of the [History Commons](#)

Recommended Citation

Buffalo State College, "The Elms 1944" (1944). *Elms, Student Yearbooks*. 33.
<https://digitalcommons.buffalostate.edu/theelms/33>

This Book is brought to you for free and open access by the Buffalo State Archives: History of the Institution at Digital Commons at Buffalo State. It has been accepted for inclusion in Elms, Student Yearbooks by an authorized administrator of Digital Commons at Buffalo State. For more information, please contact digitalcommons@buffalostate.edu.

Elms



ELMS

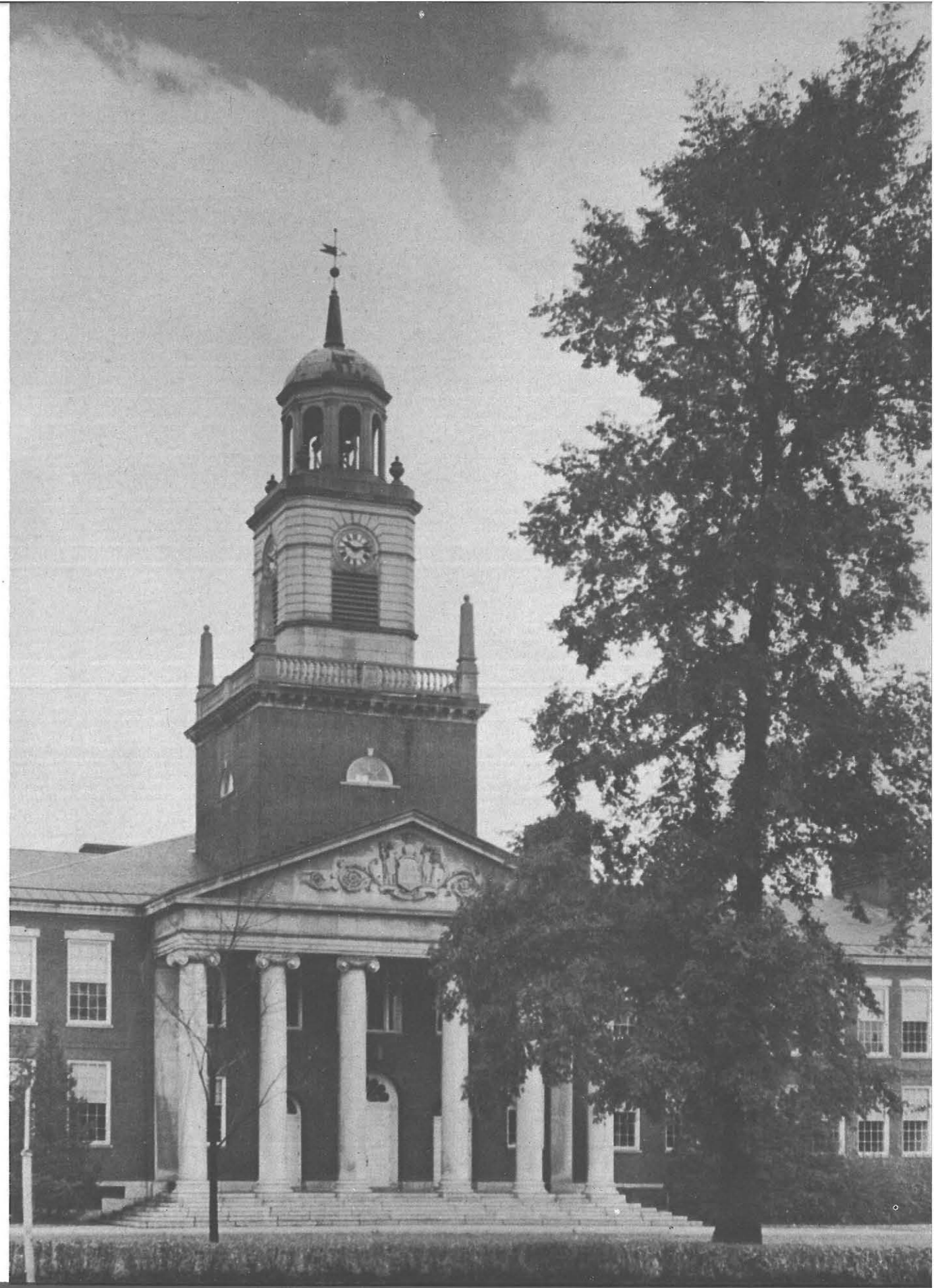
DESIGNED AND PUBLISHED
BY THE STUDENTS OF THE
STATE TEACHERS COLLEGE
AT BUFFALO • NEW YORK

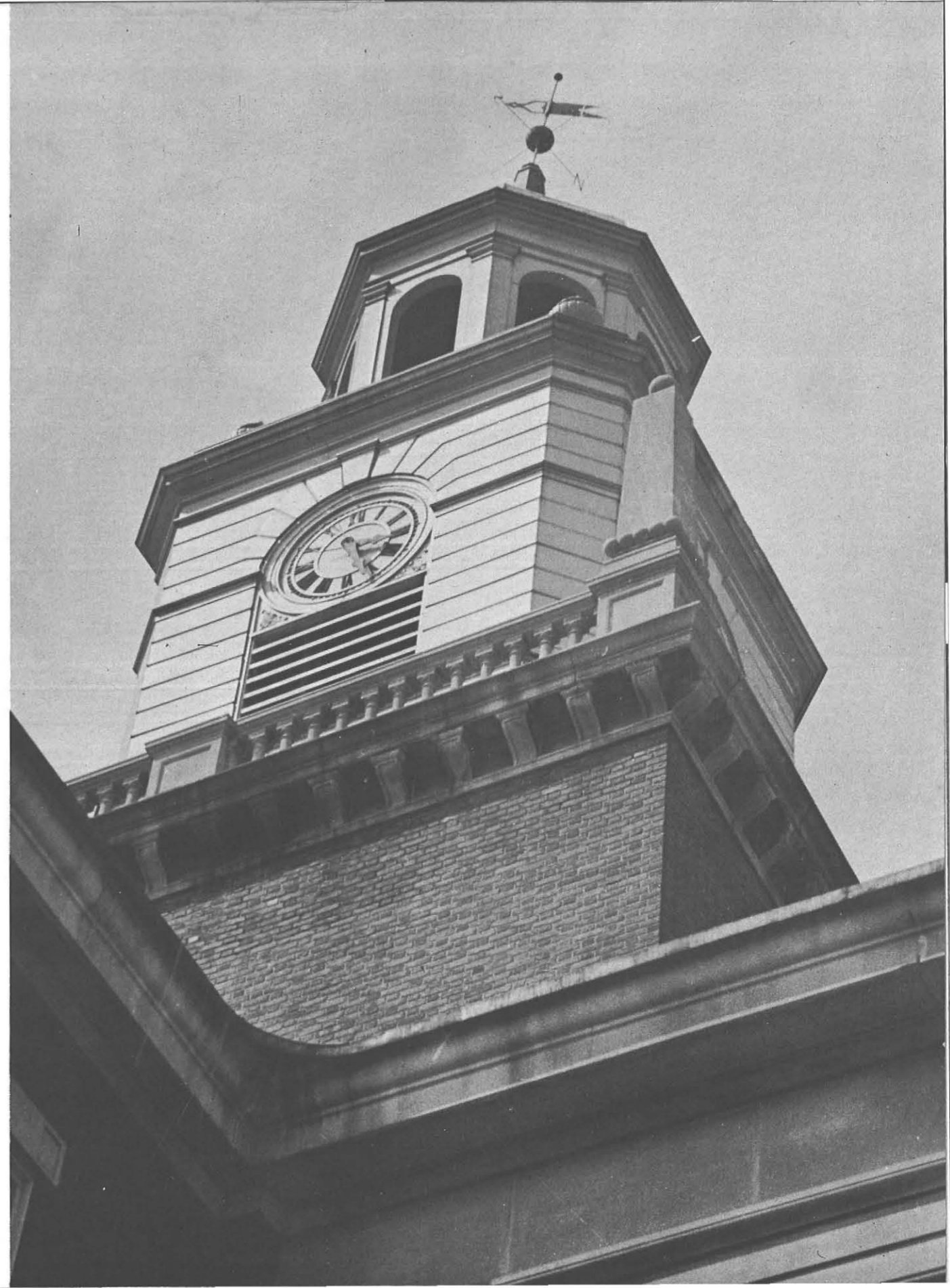
MARJORIE FELBER • EDITOR-IN-CHIEF
HERBERT NEWLOVE • BUSINESS MANAGER

REPRODUCED THROUGHOUT BY LITHOGRAPHY
THE WILLIAM J. KELLER COMPANY • BUFFALO

F O R E W O R D

TO A GRADUATE, PERHAPS HALF THE FUN OF HIS YEARBOOK IS THE BELIEF THAT IN TEN, FIFTEEN YEARS HE WILL PICK IT UP, TURN ITS PAGES, LOOK AT A PICTURE AND SAY TO HIMSELF, "I REMEMBER THAT." BUT THIS YEAR'S GRADUATES WILL NOT BE ABLE TO SAY THIS. SCATTERED THROUGHOUT THE ELMS WILL BE PICTURES OF INTERCLASS SING, Y CARNIVAL, DANCES . . . CERTAINLY . . . BUT THEY WILL BRING BACK MEMORIES TO ONLY HALF THE ORIGINAL CLASS. FOR '44 IS A DIVIDED CLASS — DIVIDED BY A WAR WHICH HAS DRAFTED MOST OF ITS MEN FROM OUR CAMPUS. LIKE THE TREE FOR WHICH IT IS NAMED, THE ELMS HAS FORKED IN TWO DIRECTIONS — THE ONE DEPICTING THE LIFE OF SERVICE TO COLLEGE AND COMMUNITY, THE OTHER, OF MUCH GREATER SERVICE TO COUNTRY. THIS IS AN ELMS FOR YOU WHO WILL GRADUATE IN JUNE . . . AND FOR YOU WHO WOULD HAVE GRADUATED HAD NOT FATE INTERVENED. BUT MAY THIS STORY OF COLLEGE LIFE PRESENTED HERE DEFY TIME AND DISTANCE, TO MAKE US AGAIN, IN SPIRIT AT LEAST, ONE CLASS



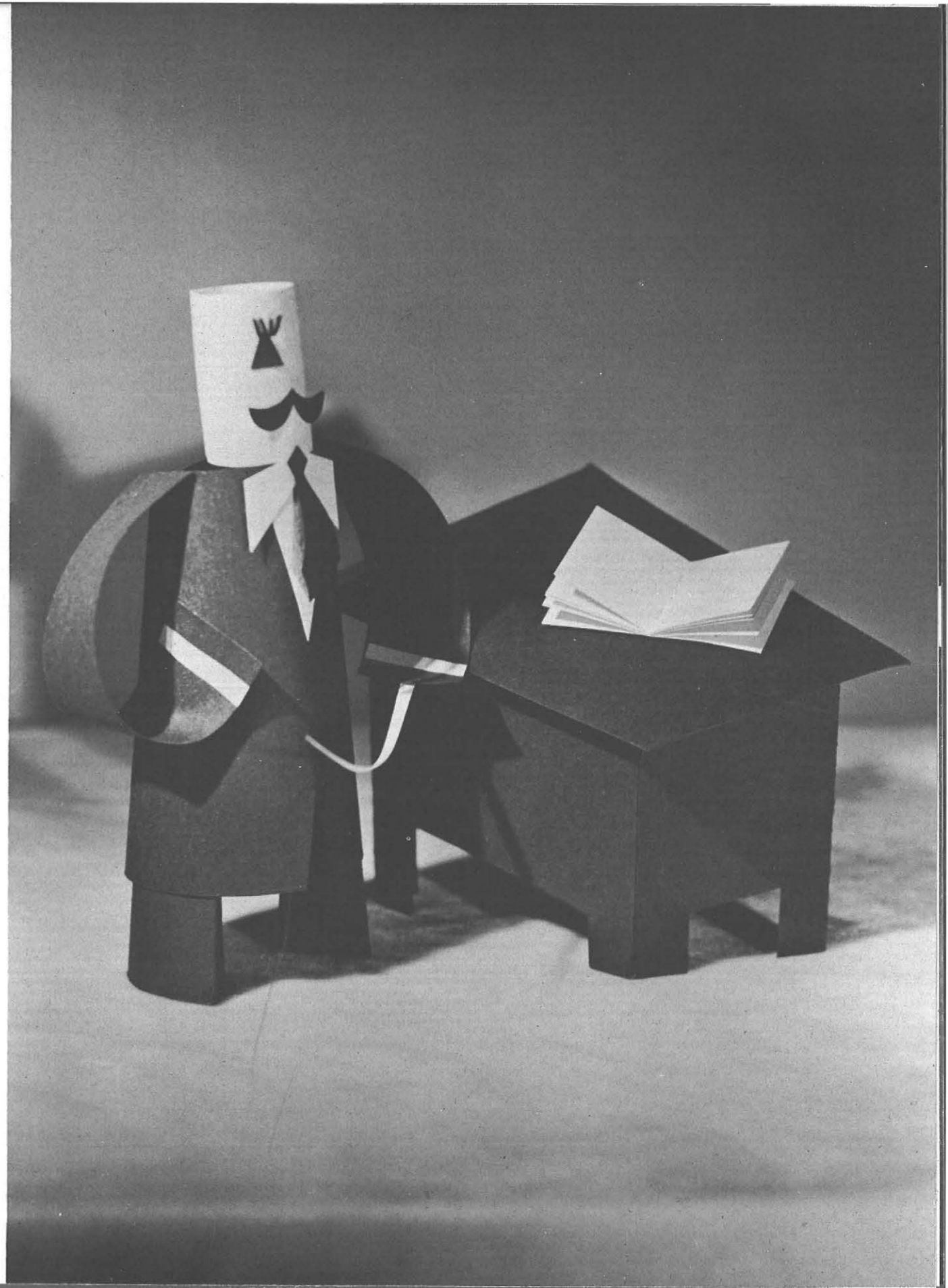




DEDICATION

TO MR. CHARLES BRADLEY WE DEDICATE THIS ELMS IN APPRECIATION OF HIS YEARS OF SERVICE TO THE COLLEGE. OF THE ART DEPARTMENT WHICH HE FOUNDED, FOSTERED, AND STILL HEADS, HE HAS JUST CAUSE TO BE PROUD. HIS DEPARTMENT HAS GAINED STATEWIDE FAME BECAUSE HE HAS KEPT HIS MIND OPEN WITH THE YEARS, AND TEMPERED NEW THEORIES WITH HIS EXPERIENCE. AS A FRIEND AND FATHER, HE HAS ALWAYS BEEN APPROACHABLE, EASY TO TALK WITH, AND READY WITH SOUND, PRACTICAL ADVICE. AS A TEACHER, HE HAS NEVER LOWERED A STANDARD OR COMPROMISED A PRINCIPLE. AS AN ARTIST, HE HAS ACHIEVED RECOGNITION IN MANY FIELDS AND ESPECIALLY IN WATER COLOR PAINTING. AS A CRAFTSMAN HE HAS DISPLAYED UNUSUAL ABILITIES IN WOOD CARVING. AS A MAN, MR. BRADLEY REPRESENTS TO US THE EPITOME OF HIGH PROFESSIONAL INTEGRITY

OUR FACULTY





Harry W. Rockwell, President for Twenty-five Years of Forward Looking Service

1 9 4 4

FATEFUL YEAR OF DESTINY IN WHICH THE TIDE OF VICTORY CHANGED DECISIVELY IN OUR FAVOR; WHEN OVER 600 OF OUR STUDENTS AND RECENT GRADUATES, PATRIOTIC AND LOYAL TO THE AMERICAN IDEALS LEARNED IN SCHOOL AND COLLEGE CLASSROOMS, WERE IN OUR ARMED FORCES CONSECRATING THEMSELVES TO THE TRIUMPH OF JUSTICE AND DECENCY OVER TYRANNY AND TREACHERY; WHEN IN HUMBLE PRIDE AND SINCERE GRATITUDE WE EAGERLY FOLLOWED THEIR FORTUNES IN TRAINING CAMPS, ON THE HIGH SEAS AND ON FOREIGN FRONTS AND ANXIOUSLY AND PRAYERFULLY AWAITED THE JOYOUS DAY OF THEIR RETURN; WHEN OUR COLLEGE, CONSCIOUS OF HER LOSS BUT PROUD OF HER MISSION, CONTINUED TO CARRY ON AND PREPARE OTHERS FOR THE SERVICE OF AMERICAN DEMOCRACY IN THE SCHOOL ROOMS OF OUR NATION.—H. W. R.



DEAN CATHERINE REED

To Dean Reed we owe much of what we got out of our four years at State. Through her insistence that we assume responsibilities, we have become increasingly self-directing persons. We admire her for her magnificent ability at organization; we are grateful for her expert guidance and helpful advice



DEAN RALPH HORN

Most crowded waiting room on campus is Dean Horn's. In his office, he has untangled many a schedule, listened to many a perplexing problem and solved them. It is to him servicemen home on furlough come to talk over the old days, and the future. His earnest desire to raise professional standards is overshadowed only by the genuine warmth and geniality of his contacts with us



DEAN RAYMOND FRETZ

The student's friend — that's Dr. Fretz. A firm believer in the value of student opinion, he has carried our banner into the battle on countless occasions. His rare teaching ability, his remarkable insight and inimitable sense of humor, have endeared him to us and made him a tradition that's unforgettable

H I S T O R Y

Mildred S. Roesser, History Instructor



Left to right: Irving C. Perkins, Instructor in History; Lester B. Mason, Assistant Professor of History; Robert O. Demond, Professor and Department Head; Marion P. Dana, Instructor





E D U C A T I O N

Robert E. Albright, Professor of Sociology,
Director of Extension and 1944 Summer Session

Left to right: Row one, Irene H. Summers, As-
sistant Professor of Education; Paul W. Sloan,
Professor of Education; Margaret S. Quayle,
Assistant Professor of Education; Row two,
Opal A. Risinger, Instructor in Teacher Train-
ing for the Physically Handicapped; Grace A.
Allen, Assistant Director of Training; Homer
A. Bruce, Instructor in Education; Sherman G.
Crayton, Professor of Education; Row three,
Oscar E. Hertzberg, Professor of Education,
Head of Department; Chester A. Pugsley, Pro-
fessor of Elementary School Administration;
Kate V. Wofford, Professor of Rural Education,
Head of Department; Harry J. Steel, Director
of Training, Placement, Professor of Education



S C I E N C E

Left to right: Marchiona M. DiMarco, In-
structor in Science; Eleanor L. Schrader, In-
structor in Science; Charles A. Vail, Instruc-
tor in Science; Raymond M. Fretz, Assistant
Professor of Science; Anna M. Gemmill, As-
sistant Professor of Science, Head of Depart-
ment; Margaret Dupre, Instructor in Science



L A N G U A G E

Charles A. Messner, Professor of Languages





Left to right: Grace A. Allen, Assistant Principal; Chester A. Pugsley, Principal

SCHOOL OF PRACTICE

Left to right: Hertha S. Ganey, Instructor in English and Latin; Inez M. Knapp, Instructor in Fourth Grade; Martha G. Metz, Instructor in First Grade; Chester A. Pugsley, Principal; T. Dolores Rousseau, Instructor in Second Grade; Marguerite Stockberger, Instructor in History and Social Studies; Harry C. Johnson, Assistant Professor of Mathematics and Science; M. Melvina Svec, Instructor in Geography; Irma L. Mazzarella, Instructor in Fifth Grade; Eleanor M. Gover, Instructor in Sixth Grade; Hildred L. Washburn, Instructor, Third Grade; Grace A. Allen



Left to right: Esther M. McGinnis, Professor of Home Economics; Margaret A. Grant, Instructor in Home Economics Education; Arline Johnson, Instructor in Home Economics Education; May C. Nye, Instructor in Home Economics; Mildred L. Sipp, Professor of Home Economics, Head of Department; Alma R. Roudebush, Instructor in Home Economics; Esther F. Segner, Assistant Professor of Home Economics Education; Ruth Palmer, Instructor in Home Economics; Faye Keever, Instructor in Home Economics; Agnes H. Louchren, Stenographer; Berdina C. Dolberg, Stenographer; Martha S. Pratt, Assistant Professor of Home Economics Education; Mary Louise Cockefair, Instructor

HOME ECONOMICS



Left to right: Walter B. Weber, Instructor in Electricity; Edward L. Morrice, Instructor in Methods and Practice Teaching; George M. Quackenbush, Assistant Professor of Vocational Organization; Andrew W. Grabau, Instructor in English; Irving C. Perkins, Professor of Vocational Education, Head of Department; John Fontana, Instructor in Mechanics

INDUSTRIAL ARTS



E N G L I S H

Left to right: Eileen C. Mulholland, Assistant Professor of English; Alfred Holman Jr., Instructor in English; Harold C. Crain, Instructor in English; John M. Thurber, Professor of English, Department Head; Mina S. Goossen, Assistant Professor of English and Dramatics





ART EDUCATION

Affiliated Albright Art School; left to right: Philip C. Elliott, Director; Dorothy Sides, Secretary to the Director; Charles Jacobs, Teaching Methods; Caroline Hennieke, Registrar. Not in picture: Virginia Cuthbert, Charles LeClair, Helen Pratt, David Reider, Irma Seitz, Francis Valentine, Clifford Westermeier

Left to right: Carolyn W. Heyman, Instructor in Art; Charles B. Bradley, Professor of Art Education, Head of Department; Stanley A. Czurlas, Assistant Professor of Art; D. Kenneth Winebrenner and Ruth M. Karcher, Art Instructors



MUSIC

Left to right: Kenneth R. Coghill, Instructor in Music; Mary Louise McMahon, Instructor in Music; Silas L. Boyd, Professor and Department Head

GEOGRAPHY

Katherine Thomas Whittemore, Assistant Professor, Department Head





REGISTRAR

Isabel Houck Kidney



PLACEMENT

Harry J. Steel, Director of Placement; Mary Lutz Ball, Alumni, Placement Secretary

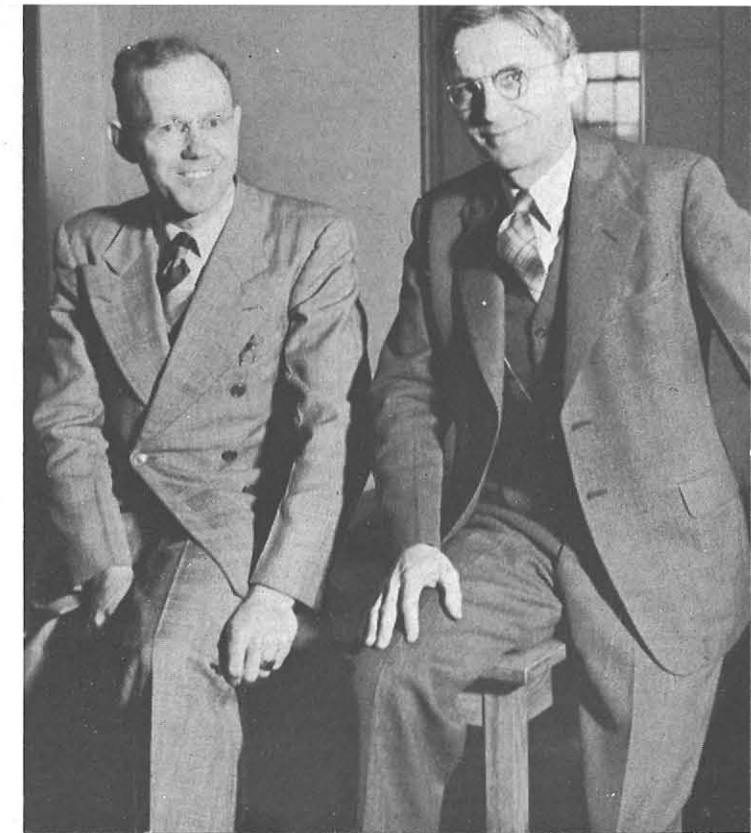


FINANCIAL SECRETARY

Marion Clark Breene

MATHEMATICS

Left to right: Harry C. Johnson, Assistant Professor; Reuben S. Ebert, Professor of Mathematics



PHYSICAL EDUCATION

Left to right: Virginia M. Frost, Instructor in Physical Education; Beryl E. Frech, Instructor in Health Education; Martin H. Rogers, Instructor in Health Education; Gertrude Roach, Instructor in Health Education; Ruth E. Houston, Professor of Health Education, Head of Department





VISUAL EDUCATION

Stanley Czurlis, Director of Visual Education, Assistant Professor of Art



COLLEGE CO-OP

Top to bottom: Joan Steinmiller, Wilma Nichols, Kathyne Michaels, Student Assistants. Standing left to right: Charlot M. Fetterman, Manager of Bookstore; Marietta Rindone, Assistant Manager of College Bookstore

LIBRARIANS

Left to right: Frances G. Hepinstall, Head, and Marion Buchholz, Assistant



HEALTH SERVICE

Left to right: Ethel M. Hansen, College Nurse; Marion F. Ayers, Assistant



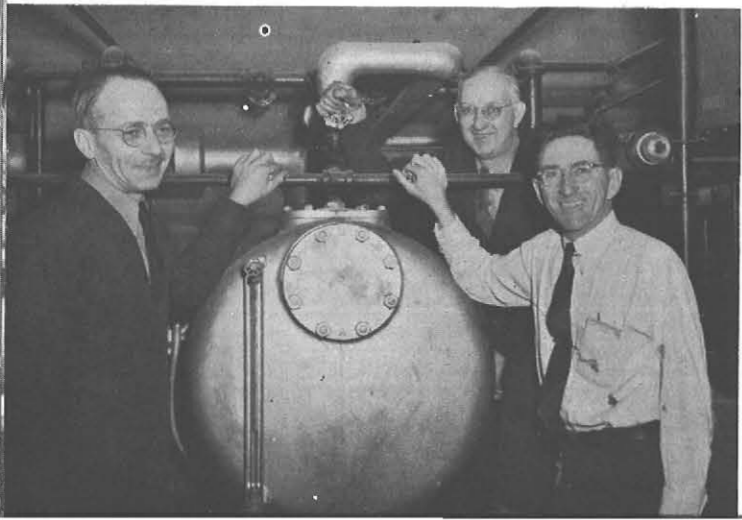
OFFICE STAFF

Left to right: Kathryn S. Graham, Catharine Rudolph, Jane L. Diaddario, Agnes H. Louchren, Berdena C. Dolberg, Mary Hulse, Rosemary Fornes, Clara E. Bauer, Mary M. May



CAFETERIA

Left to right: Mrs. James Rose, Anna H. Miles, Mabel Gilbert, Manager; Mrs. Duncan Radloff



MAINTENANCE

Left to right: Herman Lorenz, Lloyd Myhill, Harry Curtin, Superintendent of Buildings

THESE WE WOULD HONOR



For their noble ideals and scholarship, for their years of service to our Alma Mater, for their sympathetic guidance to the students, for the examples which they have set inspiring us to a deeper pride and enthusiasm in our profession these we would honor



Top to bottom: Miss Eileen C. Mulholland, Miss Grace A. Allen, Dr. Anna M. Gemmill

TRADITIONS



FROSH DAYS



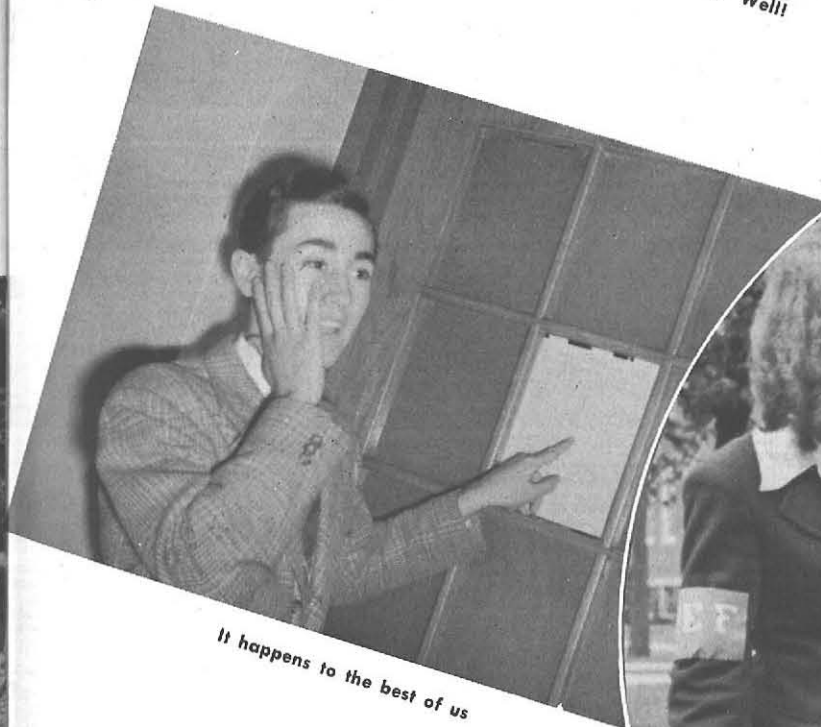
Statewide man hunt

State's youngest member class, the Freshman, has left its mark. Starting right off in a musical vein, they upset the College during Freshman week with their singing of **Don't Do It Darlin'**. They further upset it a few weeks later by becoming the first Freshman class in history to win the Interclass Sing. And still later with their assembly program. Their one year at College has been typified by their unity of action, their desire and ability to follow the capable people whom they have made leaders

Dirty work afoot



Well! Well! Well!



It happens to the best of us





INTERCLASS SING



Victory serenade

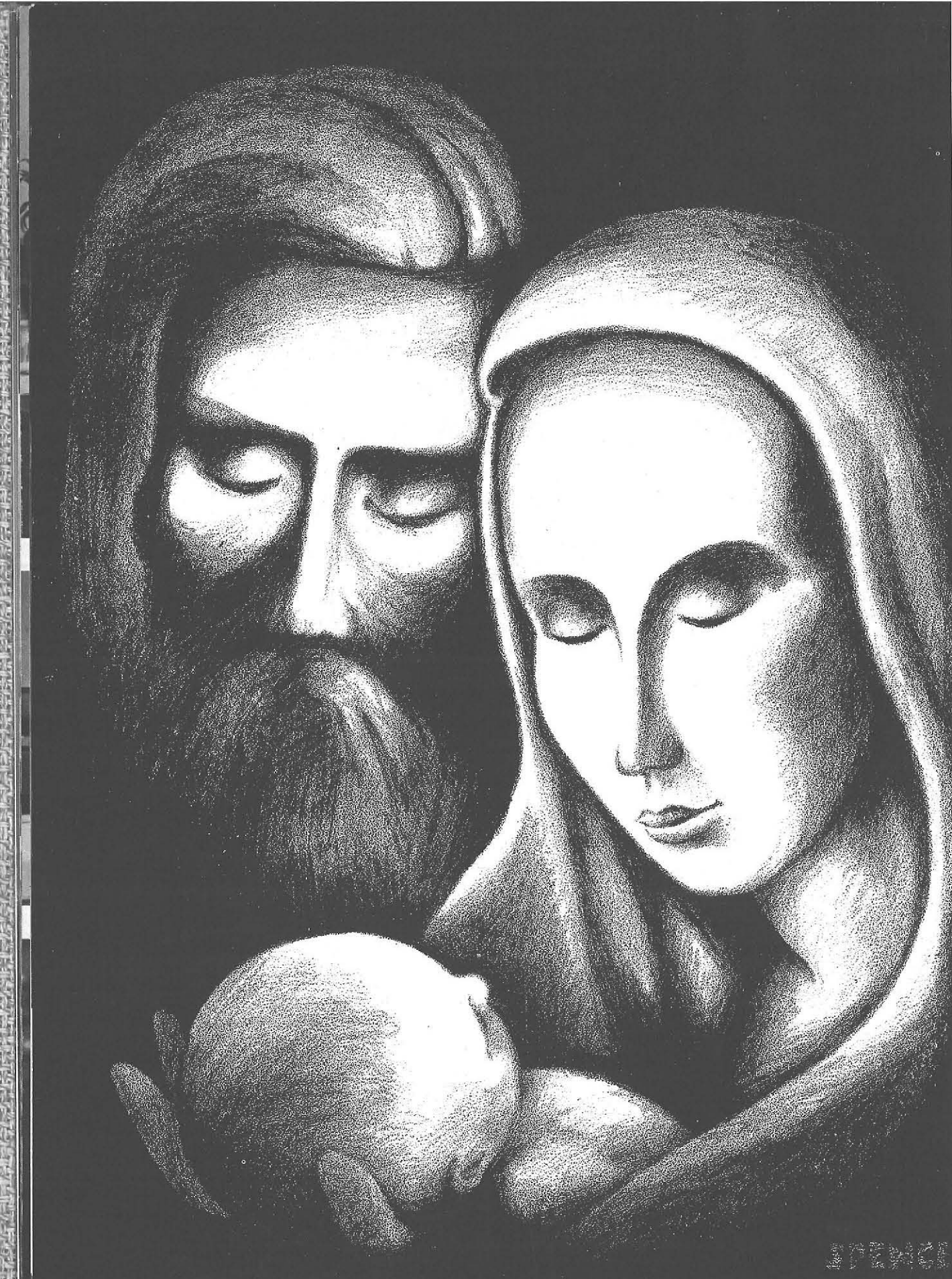
Pleasure time



The lights dim. The leader's arms are raised in readiness. The curtain slowly opens to a cadence of humming voices, feeling the rhythm of the voices, feeling the rhythm of our hearts as we wait breathlessly, hopefully, knowing your song is best. Each song is the wish, the spirit and the purpose of those who sing it. Each song should win. But then—the curtain closes, the leader's arms fall in an echoing bow, the lights laugh on, and the rhythm of a hundred feet and hands demands one choice. One choice—one winner—three letters edged in black! The Seniors know absolutely they will win; the Juniors positively; the Sophomores surely have The Chance; the Freshmen? Impossible! But—what's this? The impossible happened. The proud Freshmen were announced as winners of the 1943 Interclass Sing at State

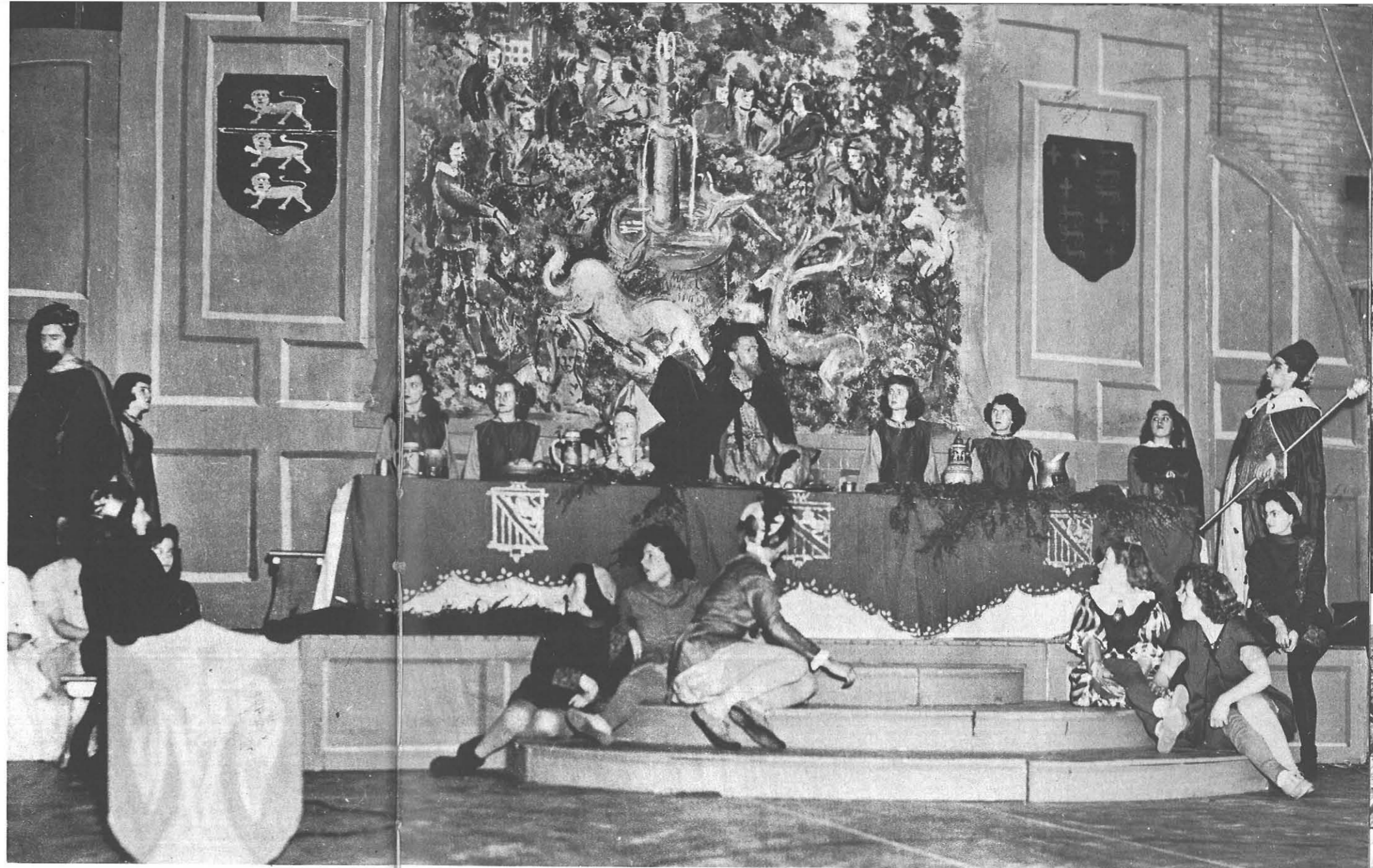
CHRISTMAS

Every year we have come to expect from the Dramatic Club a true presentation of the Christmas ideal, in the form of a religious drama. This Christmas season, the College enjoyed a Medieval Christmas Festival, **Southumberland's Yule Tide**. The gym was transformed into the Great Hall of the Castle of Southumberland, and here came the Duke and Duchess, Lords and Ladies, Bishop, Monk and Nun, Men-at-Arms, Waits, Minstrels, Singing Girls, Jesters, and Mummers. The trumpet sounded three blasts for silence, and then the Herald proclaimed that the Great Hall should be given over for one jolly night on the Eve of Christmas to the Lord of Misrule. Yeoman dragged in the Great Yule Log, and the company sang "God Save the King." Then the fun began. Punch and Judy carried on their traditional show of the doctor, the baby and the Evil One. The Lord of Misrule was borne into the Hall with courtly pageantry. The Morris Dancers were followed by the Tumblers and the Acrobats. A peddler was allowed to show his wares, the Chief Steward carried in the Boar's Head. Yes, the Three Blind Mice were at the Festival, and old Father Christmas. And of course St. George killed the Turk, who was revived by the Necromancer, while the Dragon passed the old money box through the crowd for "five or six shillings"





Bib 'n Trucker



The Duke greets his subjects

Gosh! Men!

All through the Festival the carols wove the magic spell of Christmas. But when the glorious melody, "Hark the Herald Angels Sing" was heard in the Great Hall, a quiet fell on the lively scene. The lights were lowered, the curtains drawn, and the beautiful, medieval Festival ended with the solemn tableau of the Nativity. Thus the cheerful simple faith of the Middle Ages was recaptured for several hours in the Christmas Festival at State





Stop drooling

Y CARNIVAL



Ladeez and Gentlemen! Step right up and purchase a lovely soovuneer of college days. . . . Only a dime. . . . "So I says to him" . . . "And waddya think he had for lunch?" . . . Six cents! Do I hear seven cents? Going-going-gone! . . . Even better than last year" . . . Your profile for a penny! . . . "Only a 'B' when it should have been" . . . Apples on a stick! . . . Buy some pretzels—three holes on a red, red ribbon—and take them with you to the Beer Garden! Muzzle while you guzzle! . . . "Besides the Marines always do" . . . "Holman and Crain are in it I think" . . . And if you do not tell the truth you must pay the consequences: How are the seats in the balcony lettered? No, not with black crayon—from Aa to Oo. Oh, Oh! And there are thirty-five boxes in the Student Center! S-o-o-o if you'll kindly sling this pie at your opponent, we'll be glad to launder your wardrobe free of charge . . . Feelin' loose, Goose?" . . . "Heavenly Knights! Twelve already" . . . What? No more floor show? No ice cream left? . . . So long pleeze . . . Red Cross thank you

Three years of classes, of listening to instructors, and suddenly positions are reversed. You find yourself standing in front of a room with approximately thirty pairs of eyes focused on you; now you are one of those students you have been hearing about ever since you came to State. But soon you find that you don't really mind taking care of a class in spite of your dread of that moment. You may have sworn that you'd rather die than teach music or art or science, or whatever your own particular Waterloo might be.

But after a few weeks you're teaching those subjects as if you were a past master of them. It begins to be fun to put your theories into practice. It's a real thrill to find out that those youngsters to whom you are teaching a unit on seeds went home and tramped thin the soles of ration stamp Number 18 hunting for one seed that is especially hard to find. The effort seems worthwhile when one little fellow carries an apple seed in his mouth all the way to school so that he will be very sure not to lose it. Then, more



PRACTICE TEACHING



quickly than you thought possible those weeks of practice teaching have flowed down the stream of time into the pool of the past. You face the future with confidence. You know you have much to learn, but, while teaching, you have been taught—taught the most comprehensive course of your college career

Try it this way



The candidates



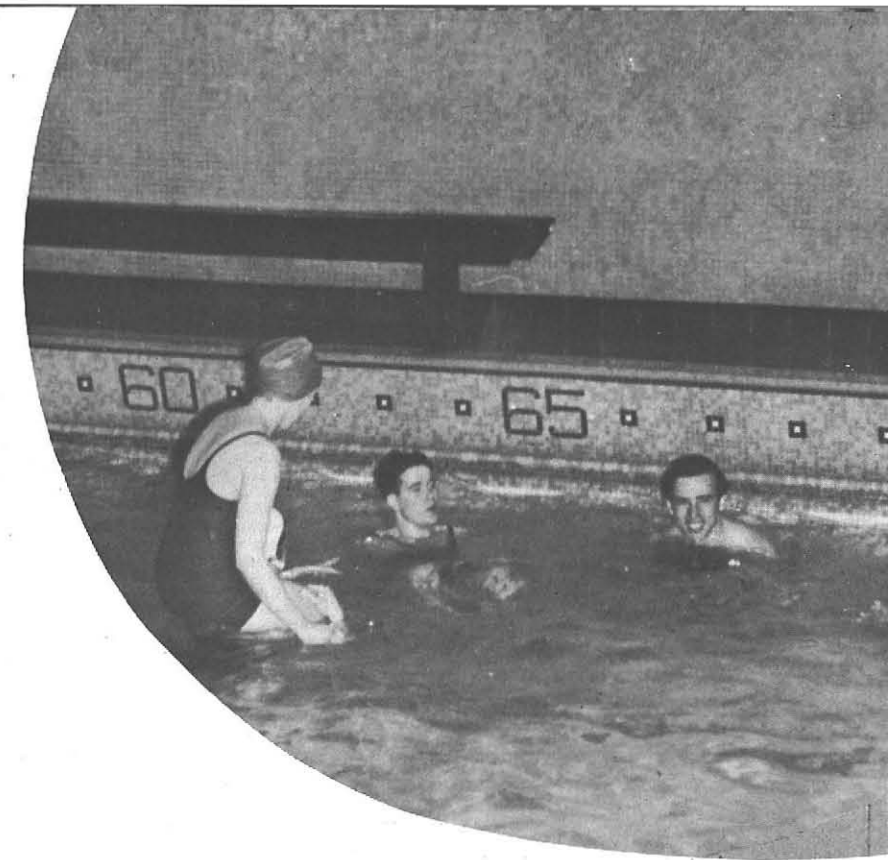
The Queen

JUNIOR PROM

"They said that it couldn't be done, but they did it." The Class of '45 was told it couldn't be done—but they did it. They were told that this was a war year, and that you just couldn't sell a Junior Prom to the students. But they did it. The entire class and their committees made careful and detailed plans, and they wound up with one of the most successful Junior Proms in the College's history. And they topped off a night of dancing by crowning a queen, secure with the thought that another State tradition had been kept "in state" for our boys

SENIOR NIGHT

'Til that day when peace comes again, the traditional Senior Ball has departed. Holding its place is something new . . . Senior Night. Occurring this year on March 17, **Senior Shenanigans** consisted of varied activities — dancing, swimming and badminton. Senior Night was fun. But it will never take the place of the Senior Ball whose return to our social calendar we are all awaiting with great eagerness

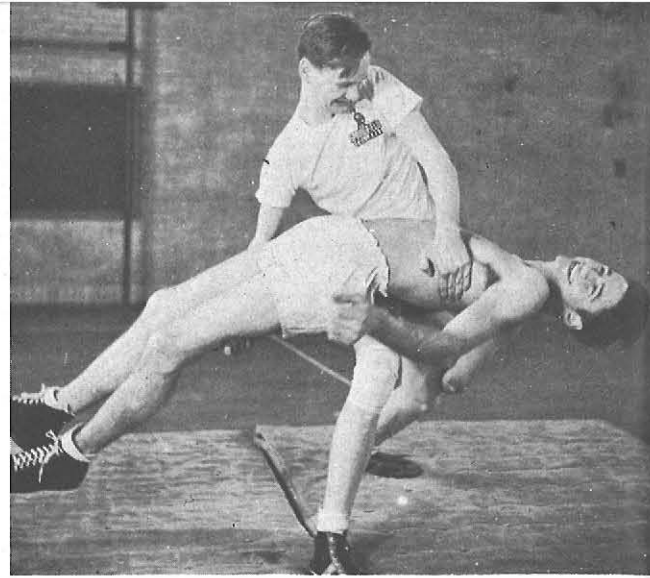


The pause that refreshes



SPORTS

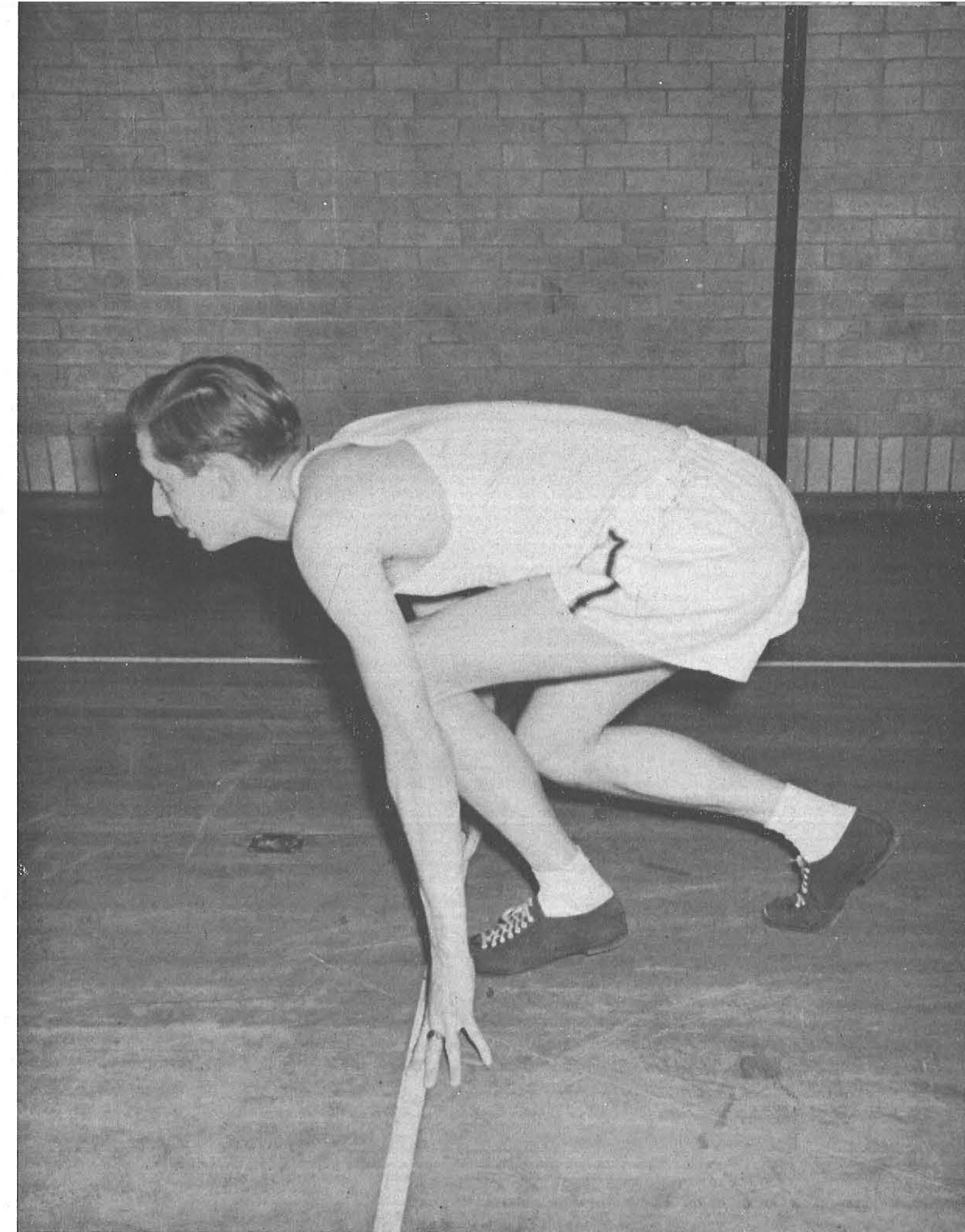
War has dug deeply into what was formerly a buzz of activity in our gymnasium. Basketball this year was informal, but at least the game was kept alive. The same can be said for swimming. Inter-mural sports were the thing. Competition between classes was keen, and the games, no matter what else, were hard fought and cleanly played. In addition to Soccer, Tennis, Badminton, Volleyball and Ping Pong, there was a revival of interest in Archery. Physical recreation during times like these should be a part of every curriculum. We have tried to make ours varied and interesting



May I have the next one?

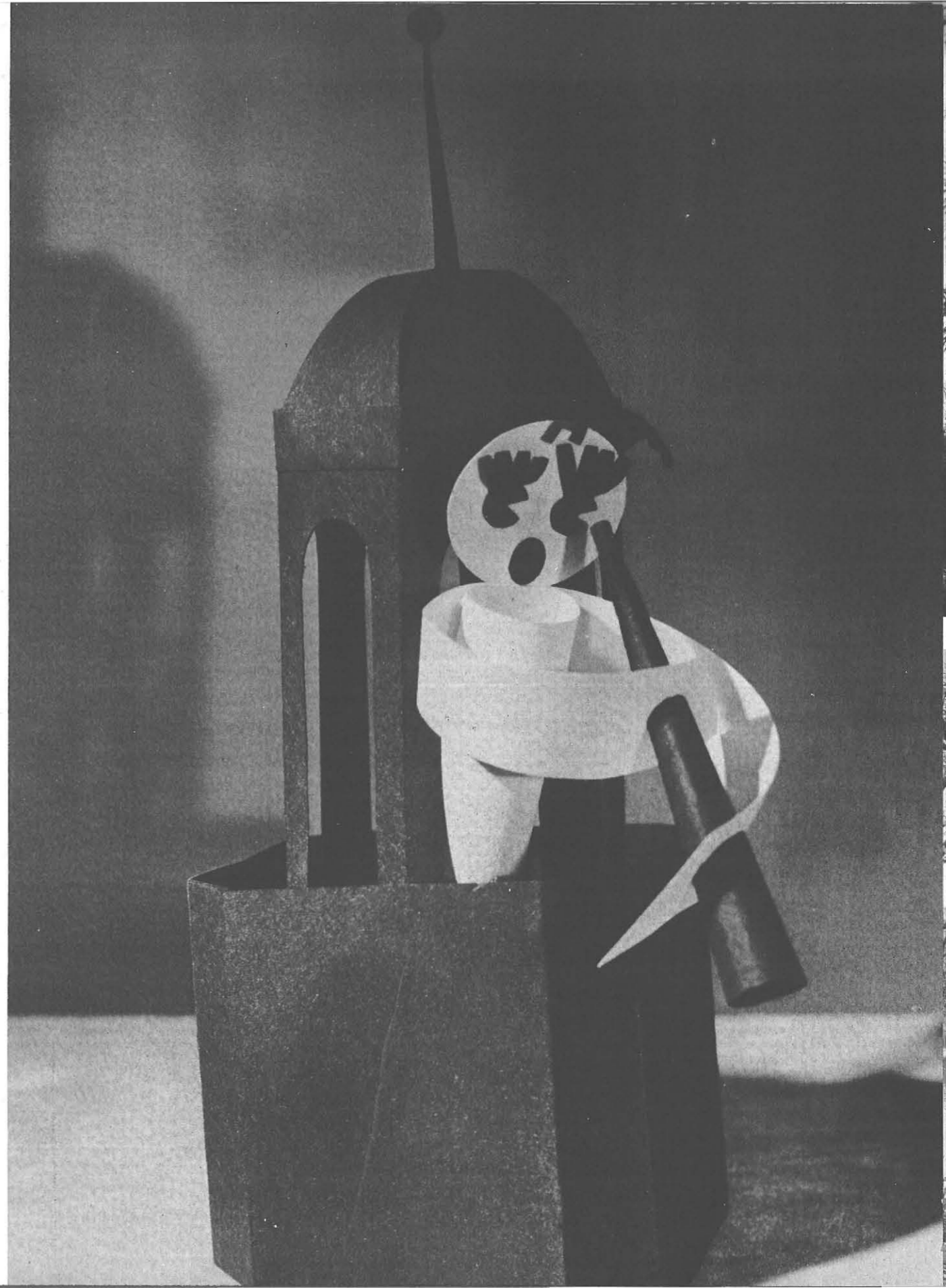


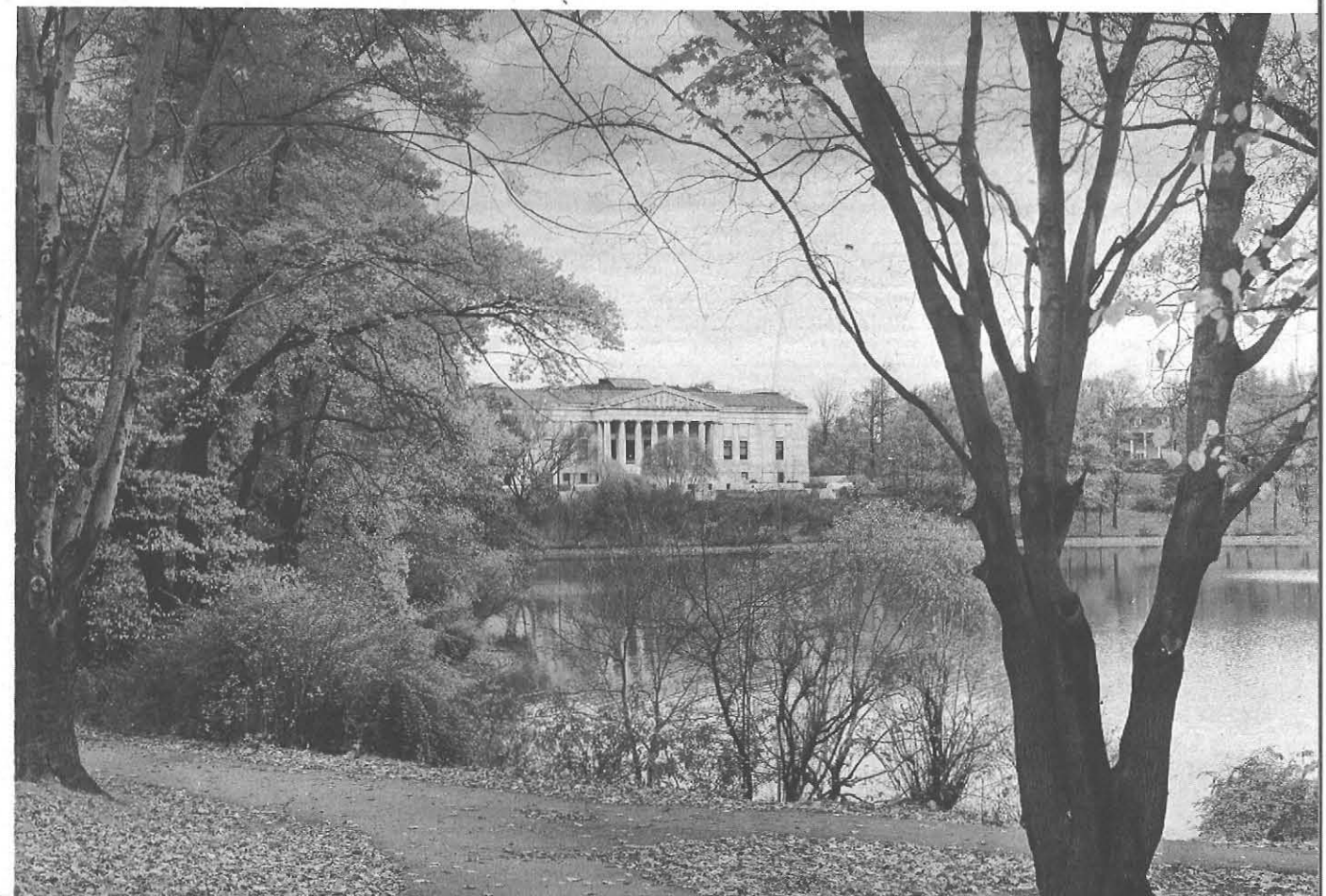
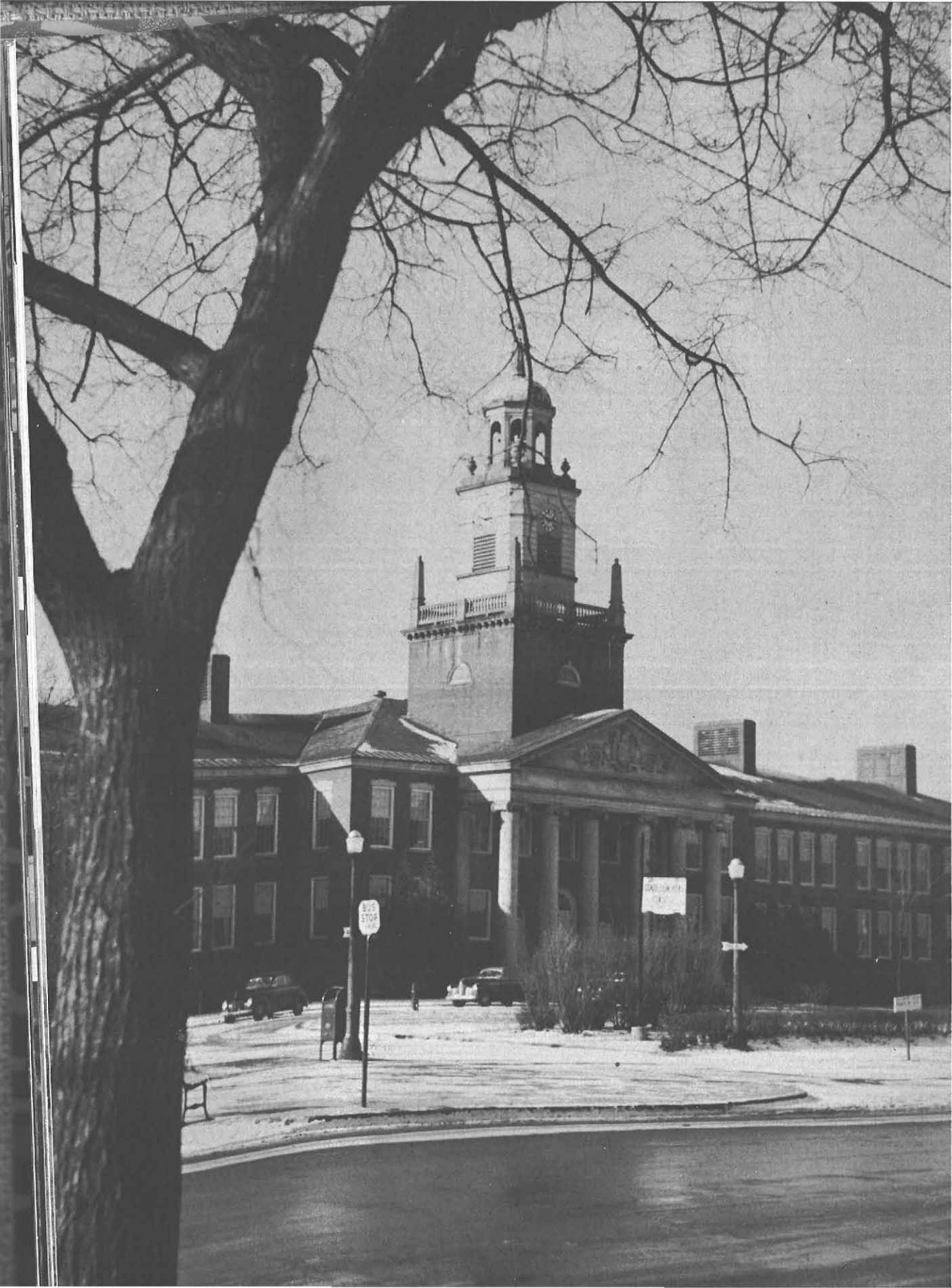
Arrowschmid

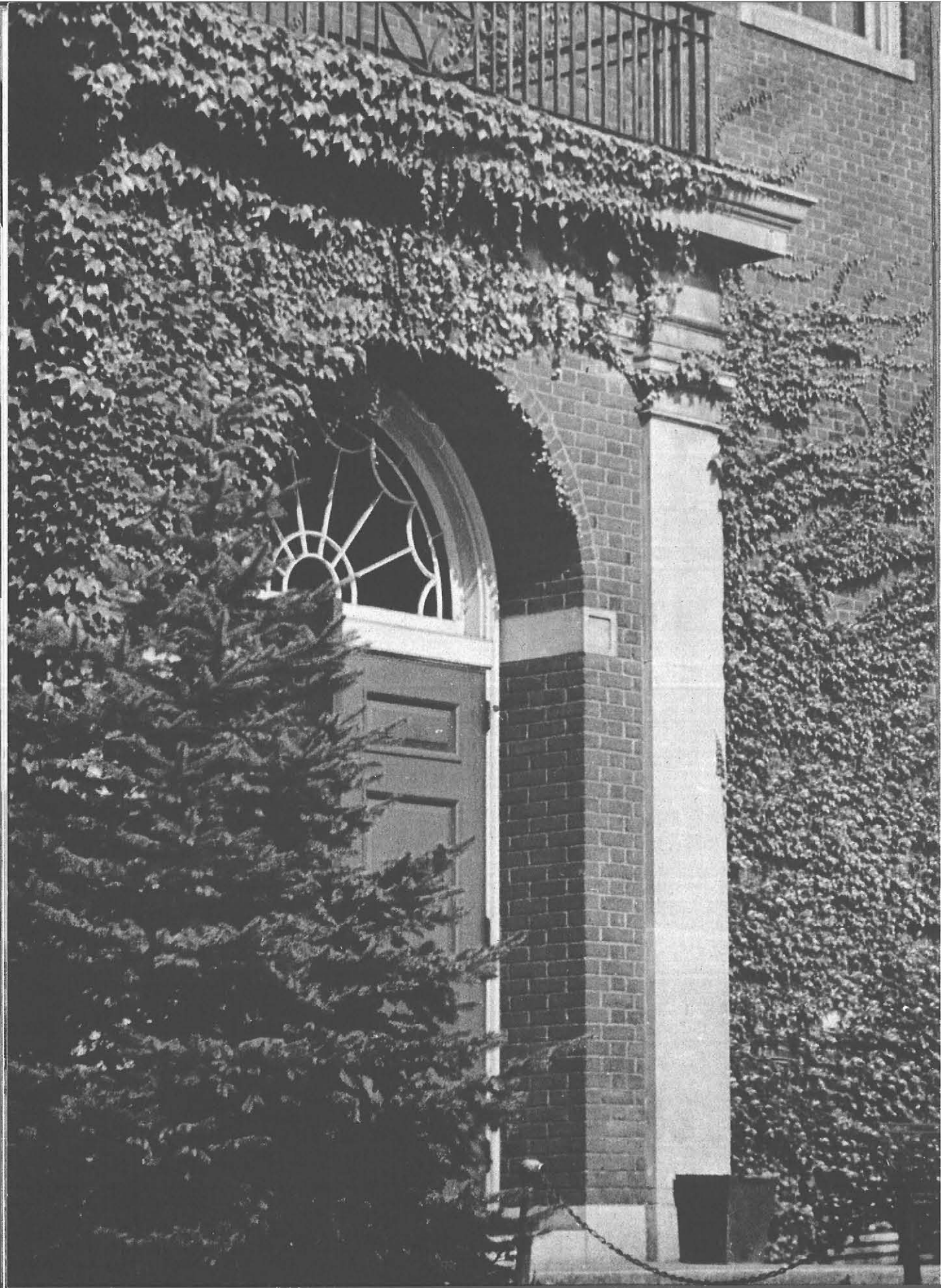


Dazzling Don — at the post

COLLEGE VIEWS







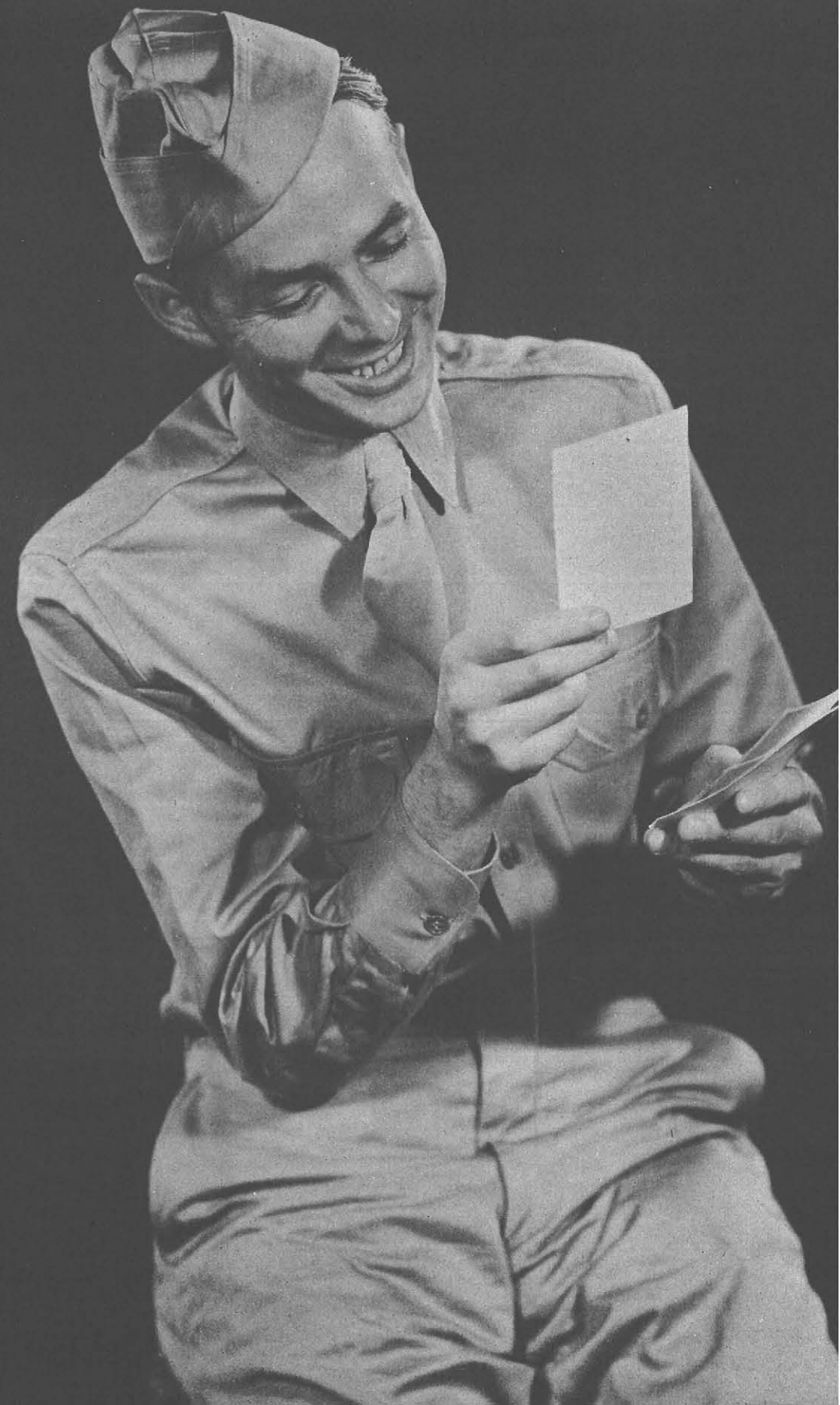
T H E Y S E R V E

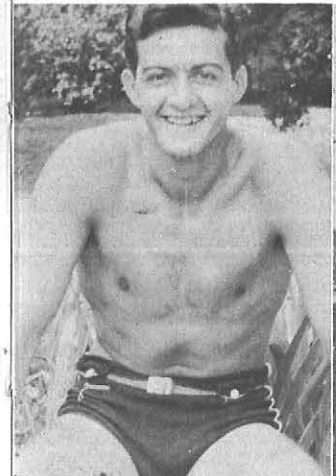
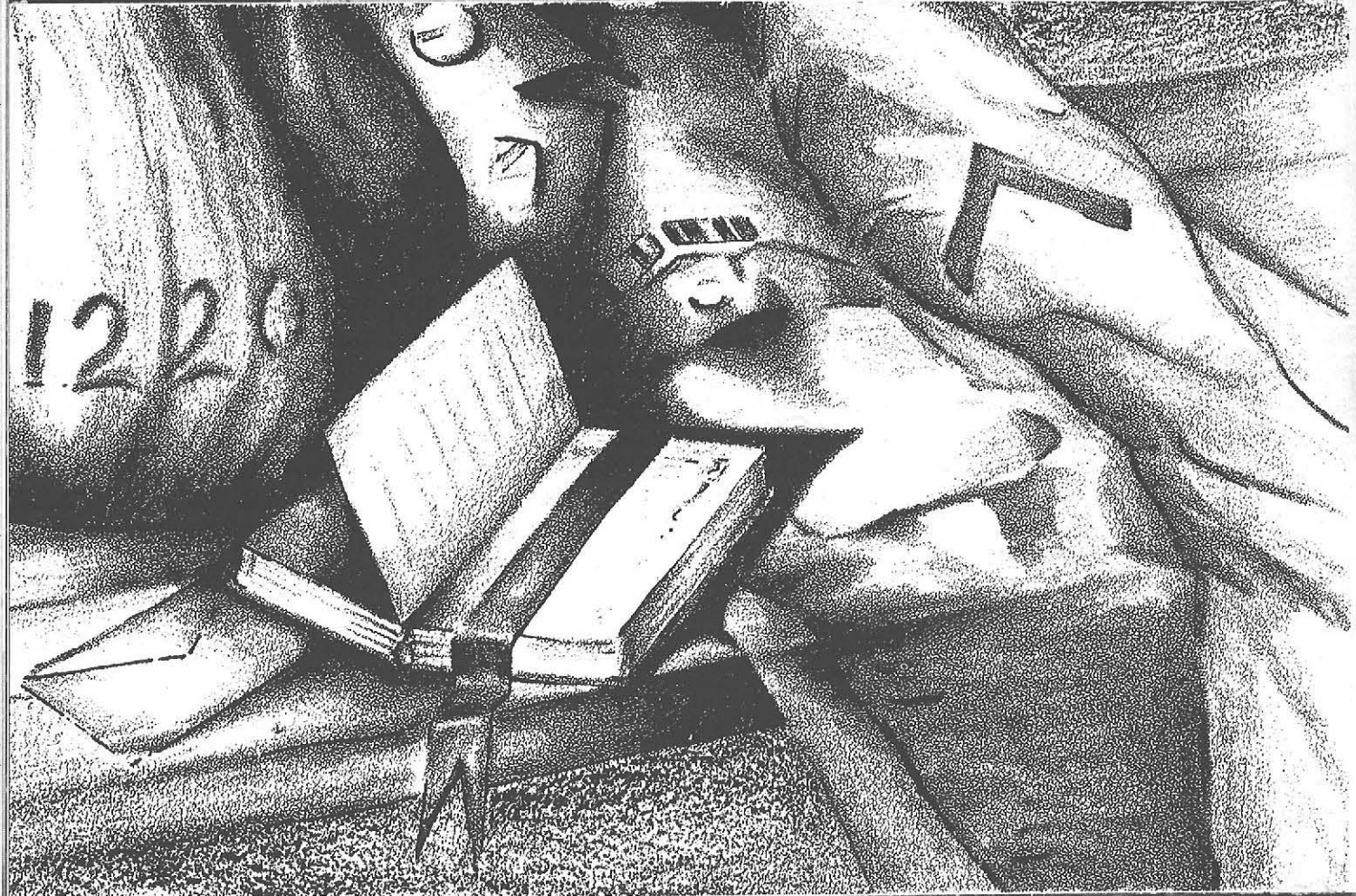
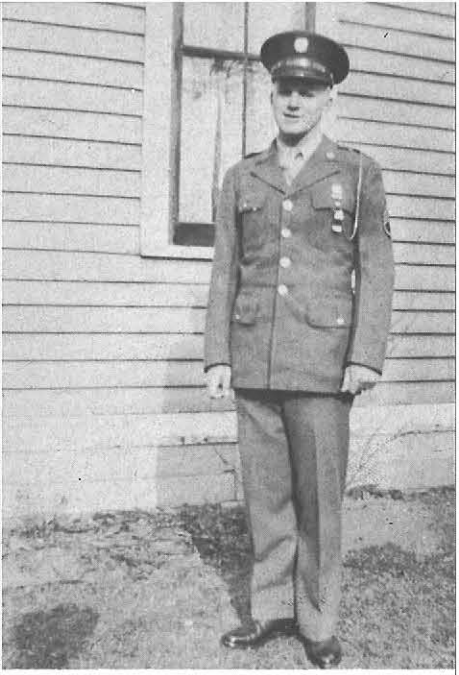


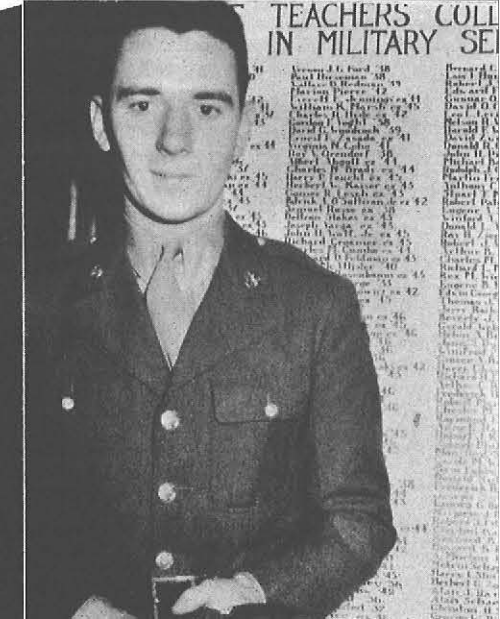
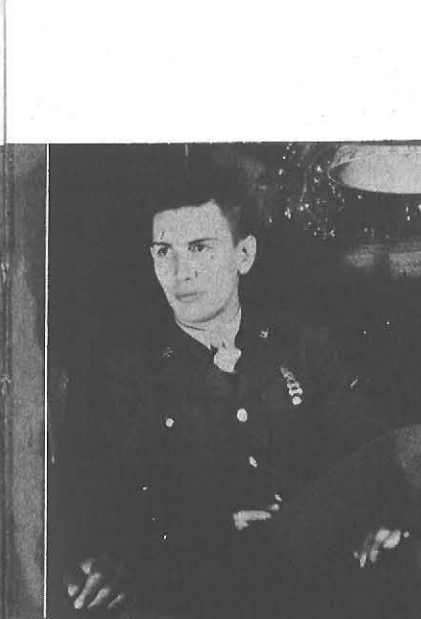
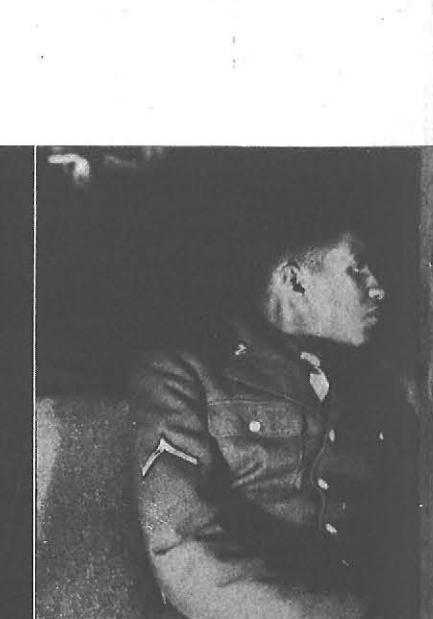
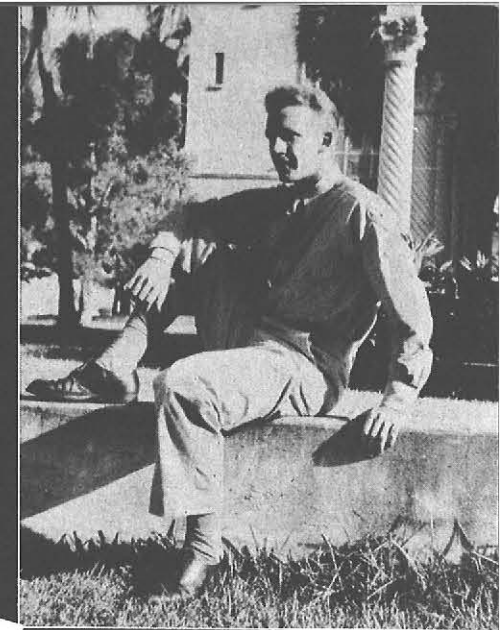


AN OPEN LETTER TO THE CLASS OF 1944 — As the elected leader in your sophomore year, I would like to ask you a favor. What are you going to do with all this wonderful clay you will soon find in your hands? What kind of person will result from the mold you are about to create? For a sculptor you will be—of beautiful, workable clay. May I ask you to make something fine of it? May I say—mind not the mental capacity, the color, the ancestry, the religion of the parts. But each of these and all of these make Americans.—Lt. Walter Mordaunt (President, Class of 1944, Sophomore Year)

Stanley Dietz — who posed for this fine picture showing the soldier's joy upon receiving mail from home — was one of the first alumni from State to die in service







The blackout which we had the other night seemed for a moment to suspend time, and in its stillness, crystallized the multitude of thoughts which we had been trying to grasp. We can't help but think of this war as a temporary blackout, and we know that someday, as that lovely song declares, the lights will go on again all over the world. In the meantime, we at State are not living in an ivory tower. We are conscious every minute of the day that there is a war, but we are not letting that fact warp our minds. We are proud of each one of you who has left our halls to fight for that intangible something for which man's soul cries out . . . call it democracy or freedom . . . call it the right to be right, or the right to be wrong, perhaps you have no name for it, but you're fighting for it, and we are with you. You may have left your name in the roster of your State fraternity, but now you have joined the biggest fraternity in the world, the armed forces, striving to bring fraternity to all

We know that you are proud of State too, that there is an affection toward our little quadrangle that will never leave you. Many of you have been back to visit. With some of you it was the desire to see old friends; with others, whose classmates have long since graduated, it was the desire to recapture memories of those with whom they once walked the halls. For you are really living in two worlds now . . . physically, you are finishing a grim task . . . spiritually you are often home, here with us, lounging in the Co-op, drinking a coke. You are even laughing perhaps at the difficulties you once encountered—that seemed so serious at the time—and now are bright humorous moments in your mind. The monotony of the daily routine, which seemed so irksome, now gives you a sense of security as you look back. When the blackout is over, and the gleam of lights pierce the shadows one by one, our light will shine as it always has, brighter than it ever has before. You will make it so

TEACHERS COLL
IN MILITARY SE

1
2
3
4
5
6
7
8
9
10
11
12
13
14
15
16
17
18
19
20
21
22
23
24
25
26
27
28
29
30
31
32
33
34
35
36
37
38
39
40
41
42
43
44
45
46
47
48
49
50

ALBERT ABGOTT * JANE ADAMS * CHARLES AMBELLAN * FREDERICK AMBELLAN * DONALD ARMAGOST * THOMAS ASBURY * RAY AST * WILLIAM ATKINS * CHARLES AUSTIN * MARGARET BABCOCK * STANLEY BABCOCK * LAVINE BACKUS * PAUL BACON * CLIFTON BAINARD * ROBERT BAKER * WILLIAM BAKER * MICHAEL BALWAN * KATHLEEN BARBER * AGNES BARD * EDWIN BARON * HOWARD BARRETT * RAYMOND BARRETT * LAWRENCE BARTZ * GROVER BATES * JOHN BATTAGLIA * ARTHUR BAUMEISTER * CHARLES BAUMLER * HAROLD BEAL * CLARENCE BECKER * MATHEW BISKUP * OSCAR BIXKY * ROBERT BLACK * GEORGE Blich * CLARENCE BOEBEL * ROBERT BOLLARD * FREDERICK BORKOWSKI * CLIFFORD BORTH * SHERWOOD BOWKER * EDMUND BOWMAN * EARL BOYD * WILLIAM BOYLE * CHARLES BRADY * JOHN BRANICKI * HOWARD BREMER * GEORGE BRIGHTON * RALPH BRIGHTON * PHILIP BRIND-AMOUR * HELEN BROSNER * DONALD BROSSMAN * ALBERT BROWN * FREDERICK BROWN * FREMONT BROWN * JEWETT BROWN * PERRY BROWN * RAYMOND BROWN * PAUL BRUCATO * GEORGE BUDD * JAMES BURKE * RUSSELL BURLEY * KATHERINE BURLINGAME * ALEX BURNES * CHARLES BURR * DORTHEA BURTON * HARVEY BUTLER * JOHN BUTLER * WALTER CALHOUN * WILLIAM CALLON * ANDREW CAMPBELL * BOYD CAMPBELL * CHARLES CAMPBELL * LAWRENCE CAMPBELL * DAVID CAPIELLO * ELLIOTT CARLSON * STUART CARLSON * RICHARD CARNIVAL * ARTHUR CARR * RAYMOND CARR * SAMUEL CARR * HARMON CARTER * CARMEN CATUZZI * HELEN CEPURA * FRANK CERATO * ROSANNA CHAD * DONALD CHAMPAGNE * HARRY CHAPMAN * HORACE CHARLES * RUDOLPH CHERKAUER * JOHN CHIAVARO * PHILIP CHRISTNER * DONALD CLARK * ALBERT CLARKE * GERALD CLARKE * W. KENT CLARKE * JOSEPH CLAYTON * TAD CLEMENTS * ISABELLE CLIFFORD * WILLIAM CLYDESDALE * GEORGE COCHERN * ROBERT COHO * VIRGINIA COHO * BRIAN COLE * PAUL COLEMAN * EDWARD COLLARD * HOWARD COLLINS * FRANCIS CONRAD * SAMUEL CONTI * DAVID COOKE * ROBERT COPPOLA * THERESA COPPOLA * RUTH COSSABOON * RICHARD COUGHLIN * WAYNE COVERT * IRVING COWLE * EDWARD COWLEY * DAVID COWNIE * HUBERT COYER * RAYMOND CRANE * RICHARD CREAMER * KERMIT CRISSEY * CHARLES CUMBO * CATHERINE CUNNINGHAM * MURDOCK CUNNINGHAM * CHARLES CURTIN * HAROLD CURTIS * ABE CUTCHER * GEORGE DAILEY * JAMES DALEY * HUBERT DAVIES * THOMAS DAVIS * GEORGE DECKER * PAUL DELLINGER * ARTHUR DEMBOWSKI * ROBERT DICKINSON * ALOYSIUS DIEBOLD * WILLIAM DIEHL * STANLEY DIETZ * JOSEPH DIGESARO * JAMES DIXON * PAUL DOANE * DON DOERING * HOWARD DOMST * JOSEPH DORCZAK * DONALD DONLEY * ARTHUR DOTY * EDWIN DROPER * ESTHER DUDZIAK * LEONARD DUDZIAK * MATHEW DUGGAN * MARION P. DUNNING * JANE S. DUNNING * ANTHONY DURLAK * MARJORIE DuROCHER * LEO DUSTMAN * PAUL EBERMAN * KENNETH EDMUNDS * RALPH EGGLESTON * LAURA EHMAN * JOHN EIGENBROD * CLARENCE ELVEY * GEORGE EMBLIDGE * EDGAR ENEA * FRANK ESTVAN * STEWART FAIRBROTHER * SAM FEHRENZ * MAYNARD FELDMAN * MARGARET FELSINGER * LEO FENAR * MICHAEL FENIELLO * CARLYLE FENWICK * JOSEPH FERRAR * HENRY FESSARD * HARRY FEUCHT * DONALD FINKLE * WILLIAM FINNEGAN * EDWARD FIRESTONE * RAYMOND FISHER * ROBERT FITZGERALD * EDWARD FLAYER * ERNEST FLEMMING * THOMAS FLOOD * CHARLES FOSTER * HARVEY FOX * WARREN FRAHN * MARTIN FRIED * FRED FULLER * ERMO FURLANI * VINCENT GALBO * NORMAN GALEMBO * CHARLES GAMBERT * BENJAMIN GARELICK * CARLETON GERBRACHT * CHARLES GERBRACHT * HAROLD GERBRACHT * HOWARD GEORGE * RICHARD GIBBONS * ALPHANSO GIGLIA * CHARLES GIGLIA * HAROLD GILBERT * BERNARD GLASER * WILLIAM GLASGOW * STEPHEN GODFREY * WYONA GOETZ * ISRAEL GOLDWATER * ELIZABETH GOODFELLOW * DONALD GOODMAN * THOMAS GOODMAN * BERNARD GORROW * ANNE GOULD * ROBERT GRAHAM * WILSON GREATBATCH * HARRY GREEN * ROBERT GREEN * JOHN GREGGO * CHARLES GREMKE * ROBERT GRIFFIN * LOUIS GRITIN * DANIEL GROSSMAN * ROGER GROTH * WILLIAM GROTKE * M. ANDREW GRZYWA * JOSEPH HAFFEY * CREDE HAGERTY * ANNE HAGGERTY * LLOYD HAHN * PAUL HALE * EDWARD HALL * SAMUEL HALPERT * CALISTA HALSTEAD * GLENN HAMILTON * JOHN HAMMEL * LAURENCE HANRATTY * STEPHEN HARRISON * HUGH HASLETT * DANIEL HEALY * ROBERT HEIST * FREDERICK HELLENBERG * EDWARD HELWIG * HENRY HEMPSTEAD * A. WILLIAM HENDERSON * WILLIAM HERDLE * CLEMENT HERMAN * WILLIAM HERMANN * WILLIAM HERRICK * WARD HERRMANN * RUSSELL HEWITT * EUGENE HILTON * HERBERT HILTON * PAUL HIRSEMAN * KENNETH HODGE * EUGENE HOFFLER * GEORGE HOFFMAN * FRANCES HOLBROOK * JAMES HOLFELNER * CLAYTON HOLLAND * MARVIN HOLLAND * GORDON HOLLENBECK * O. WILLARD HOLLOWAY * ALBERT HOPKINS * BARBARA HOSKINS * JOSEPH HOURIHAN * WALTER HRYCIK * EDWARD HUDSPITH * RICHARD HUGHES * LOIS HUMPHREY * CHARLES HYDE * ELLIS HYDE * WILLIAM HYDE * EVELYN JAMES * ROBERT JOHNS * ROBERT JOHNSON * CLYDE JONES * EDWARD JONES * REES JONES * RICHARD JONES * WILLIAM JONES * DONALD JOSEPH * ALBERT JOYCE * HERBERT KAISER * ALBERT KALLET * MELVIN KALLET * CLAYTON KAMINSKA * RICHARD KAPPLER * IRWIN KARCHMER * EDWARD KELLY * ALFRED KENYON * CHARLES KIEFER * STANTON KILBURN * WILLIAM KILCOYNE * ALBERT KINGSTON * ROBERT KINGSTON * VERA KINSLEY * JOSEPH KINZIE * GEORGE KIRCH * ROBERT KIRSCH * STEPHEN KLYM * WILLIAM KNEER * GEORGE KOENIG * CARL KOGLER * LEO KOTULA * MAYNARD KRANZ * JOHN KRYLO * DONALD KUHUS * GEORGE KUHN'S * ANTHONY LaBUE * RALPH LADE * RICHARD LAPE * WALTER LARE * DONALD LAWLESS * DAVID LAWRENCE * JAMES LAZARONY * LLOYD LEACH * BERTRAM LEARMAN * ERWIN LEDERER * CHARLES LEE * HENRY LEEGE * NORMAN LEEGE * GEORGE LEHR * GOMER LESCH * JOHN LESLIE * LEO LEVENKIND * AARON LEVINE * JOHN LITTLE * HERBERT LIDSTROM * RUTH LIND * GUNNAR LINDSTROM * ELMER LIPOWICZ * SAMUEL LoMAGLIO * RUSSELL LONGLEY * ALEXANDER LORINCZ * LEONARD LOUIS * HAROLD

LOWE * SOL LUBOW * PETER LUCAS * LORAIN LUCE * JOHN LUNGER * MURRAY LUSTIG * FRANCES LYNCH * NORMAN LYON * AGNES MAHONEY * WINIFRED MAHONEY * PORTER MALLORY * BETTY MALLUE * SALVATORE MANISCALCO * JEANNETTE MANNELLO * RICHARD MANSKE * ROBERT MARKOVITZ * ROBERT MARKS * ALBERT MAROONE * EDMOND MAROONE * JOHN MAROSY * WILLIAM MARSH * JOHN MARSO * ELMER MARTIN * SEBASTIAN MARTORANO * ROBERT MASON * EDDIE MASSET * EUGENE MATHES * JOHN MATTISON * FRANK MATZKE * DOROTHY MAY * FOREST MAXWELL * ALFRED MEGER * EARL MERRITT * ROSELYN MEYERS * JOHN MICHAELS * FREDERICK MICHELS * RICHARD MICHERDZINSKI * HOWARD MILLER * JAMES MILLER * RUDOLPH MILLER * WILLIAM MILLER * HARRY MILOFSKY * ROBERT MOHR * WALTER MORDAUNT * SAMUEL MORGANTE * WILFRED MORIN * GLENN MORRISON * ROBERT MORRISSEY * SAMUEL MUNICH * JACK MURPHY * LEO MURPHY * JOHN MURRAY * STUART MYERS * JOSEPH McALLISTER * JOHN McBRIDE * CHARLES McCARTHY * J. T. McCARTHY * TYRIL McCOY * JOHN McDONALD * ROBERT McDOWELL * PAUL McMAHON * DANIEL McNERNEY * WALTER McVEE * HENRY NAWOTKA * JOHN NEFF * EDWARD NELSON * HARRY NELSON * JOSEPH NEUHAUSER * ELMER NEUREUTHER * LAURENCE NEWCOMB * JOHN NICHOLS * FRANK NUTIS * STEVEN NYITRAI * EARL OBERMEYER * DANIEL O'DONNELL * DONALD OGLEVEE * CHESTER OLENIACZ * JOSEPH OLIVER * CLARENCE OLSON * PATRICK O'SULLIVAN * ROY OREN-DORF * WALTER ORING * J. ALLEN OWEN * LeGRAND OWEN * GEORGE PAGAN * CHESTER PALKA * ARTHUR PANKOW * HARRY PARKER * ROBERT PATELUNAS * JOSEPH PATTI * JACK PATTYSON * JAMES PECK * ROBERT PECK * GLENWOOD PENSLIEN * ALFRED PERKINS * JACK PERMAN * WILLIAM PERRY * HAROLD PETERSON * KENNETH PHILLIPS * ROBERT PHILLIPS * JOHN PIATAK * GEORGE PIEPER * PATRICK PINTO * JEANNE PIPER * NATHAN PLATT * PHILIP POHLMAN * LLOYD POLLOCK * KAREN POPP * ESTELLE PORCHER * RAYMOND PORTER * ROBERT POTTER * WYATT POTTER * ERBY POWELL * O. K. PRENTICE * DAVID PRITCHARD * SALVATORE PULEO * ROBERT QUERNS * ANNE QUINLAN * SHERWOOD QUICK * JERRY RAIKEN * MORRIS RAIKEN * ALAN RAMM * HOWARD RANDALL * A. MORTON RAYCH * J. DONALD RAYNOR * WALLACE REDMAN * MALCOLM REDMARE * ROY REED * WILBUR REESE * NANCY REID * ROBERT REIST * ARTHUR RESSING * ASBERY REYNOLDS * HELEN REYNOLDS * FRANKLIN RICHARDS * PAUL RICOTTA * GEORGE RILEY * RAYMOND RINDFUSS * LEWIS RINDONE * HARRY ROBERTS * RALPH ROBERTSON * LANORA ROBINSON * WILLIAM ROCHELLE * WERNER ROGERS * JACK ROMANIUK * JOSEPH ROMANO * EARL ROOD * CASS ROONEY * PAUL ROONEY * HAROLD ROSENBAUM * BENJAMIN ROSENTHAL * BARLTETT ROSS * BEVERLY ROSS * CHARLES ROSS * BERNARD ROSTAD * ROSS ROWLEY * FREDERICK RUBENS * JOSEPH RUFFINO * DONALD RUNYAN * SAMUEL RUSSO * CLYDE RUTTENBER * ALBERT RYDZYNSKI * GEORGE RYNDERS * DAVID SANFORD * MONTFORD SCHRADER * AARON SIMON * LEWIS SMITH * WILLIAM SPALDING * GILBERT TAUFFNER * JAMES TEICHMANN * EARL TELSCHOW * RICHARD TEMLITZ * RALPH THEOBALD * RALPH THOMAS * EUGENE THOMPSON * ROBERT TIMERSON * LESTER TOKARS * INA TRACY * SAMUEL TRIPPE * GEORGE TROMBLEY * ROBERT TRUDEL * MARVIN TRUDEL * EDGAR TULLOCH * HAROLD ULRICH * NELSON UPTON * RALPH UPTON * EUGENE URBANSKI * WALTER VAN BUREN * JOSEPH VARGA * LOUIS VASTOLA * JOSEPH VERBA * THOMAS VER HAGE * MARIE VIOX * LEON VIVIER * ROLLIN VOGAN * DONALD VOGHT * GORDON VOGHT * NELSON VOGHT * DONALD VOLTZ * GEORGE WAGNER * RAYMOND WAGNER * BERNARD WAMBSGANSS * FRANCES WANDELL * FREDERICK WARREN * GRACE WATROUS * ROBERT WATSON * CECILE WATT * SHERILL WEBB * CARL WEBER * LEO WEBER * EDWIN G. WEINHEIMER * JOEL WEISBERG * REX WEIST * JOHN WELCH * GERALD WELSTED * JAMES WERICK * GRANT WETT-LAUFER * JEROME WILKER * LEONARD WIELOPOLSKI * EDGAR WILLIAMS * MERRELL WILLIAMS * ROGER WILLIS * CLAYTON WILSON * STANLEY WITMEYER * KENNETH WITTER * HENRY WOJCIKI * JOHN WOLF * ROBERT WOLF * JOHN WOLANYK * ROBERT WOOD * DAVID WOODCOCK * HAROLD WOOLCOTT * JOHN WUJEK * MICHAEL WOYKULICH * FRANCIS WYROBA * STEPHEN YURANOVICH * ERNEST ZASADA * RAY ZIER * HERBERT ZOLLITSCH * DAVID ZWICK * ALICE ACQUARD * JOHN ARMSTRONG * DAVID BORCHARD * ROBERT FILER * EVERETT JENNINGS * RAYMOND KENDALL * NORBERT LYNCH * PATRICIA NICHOLS * GERALD WOLF * EDWARD ZIEGLER * STANLEY SACHA * ARTHUR SAGER * VINCENT SAIA * ALDEN SALLACK * EUGENE SALTARELLI * ELWOOD SAMSON * WILLARD SAUTER * HUBERT SAYLOR * MARJORIE SCHAAP * ALAN SCHAEFER * MELVIN SCHAPIRO * JOHN SCHASSAR * GRACE SCHENK * CHARLES SCHILLING * JOHN SCHLOERB * CHESTER SCHOENBORN * DONALD SCHOLZ * MARION SCHRIEBER * RAYMOND SCHULTZ * ROBERT SCHULTZ * NORMAN SCHUSSLER * JOSEPH SCHWARTZ * WILLIAM SCHWIER * WILLIAM SDAO * GLEN SEAMAN * HOWARD SENGBUSCH * CLEON SERVICE * ALLAN SEXTON * FREDERICK SHAW * GORDON SHAW * WILLIAM SHELDON * ROBERT SHEPPARD * FRANCIS SIEMANKOWSKI * WILLIAM SION * FRED SIXT * GEORGE SKINNER * GERALD SKINNER * WALTER SLADE * ARTHUR SMITH * DAVID SMITH * RALPH SMITH * ROLAND SMITH * ALLEN SMUKLER * SAM SNITZER * FRANK SNYDER * CHARLES SODERLUND * DAVID SPEAKMAN * GILMORE SPEAR * HARRY SPURR * HENRY STACKOWICZ * MERWIN STAINES * CHESTER STANKO * R. H. STELLRECHT * KENNETH STENZEL * EVERETT STEVENSON * HARRY STEVENSON * JOHN STEWART * DELLZON * STOKES * RICHARD STOTTLER * DAVID STREBE * HARRY STRICKLAND * GRACE STRONG * ROBERT STRUNK * JOSEPH STURM * JOSEPH SULLIVAN * WINFORD SWANSON * RICHARD SWART * HUBERT SWIFT * JAMES SWEET * CHESTER SWIERCZYNSKI * BERNARD SWIFT * CARL SWIFT * JOHN SYKES * ROBERT SYLVES * JOSEPHINE SYRACUSE * STEPHEN SZAFRON * EDWARD SCYMANSKI * THEY SERVE * THEY SERVE * THEY SERVE * THEY SERVE * THEY SERVE * THEY

ORGANIZATIONS



ALPHA HONOR SOCIETY

Take a good look at the students pictured on this page. They are the leaders at State, and the members of Alpha Society. Each Spring a limited number of Juniors and Seniors who have shown outstanding leadership in College activities, are tapped for membership



The Society encourages well-directed student activities and high standards in existing organizations. Alpha practices what she preaches too, for she annually sponsors Leadership and Organization Days, as well as the traditional Holly Hanging





Operating the ever frequented Bureau of Instructional Materials is their big job. It is not widely known that the Bureau is run independently of the main library and the management of it falls to student organizations which have shown leadership and ability. Every year, during National Education Week, Kappa Delta Pi really goes to town. This past year was no exception

KAPPA DELTA PI

Kappa Delta Pi is an early bird organization — for most of its meetings are held by the dawn's early light. It is a National Educational Fraternity which fosters fellowship, scholarship and achievement in educational work. Membership in this organization is limited to students with above average grades



NU LAMBDA SIGMA



Nu Lambda Sigma counts among its members superior English students possessing a keen interest in literature. This year, as in few years before, Nu Lamb has been a powerful force behind **The Record**, its members contributing to the paper regularly. At the meetings themselves, discussions have waxed hot and heavy on such controversial subjects as James Farrell, Robinson Jeffers, and D. H. Lawrence. A new innovation was the discussion of other Art Forms, showing their direct relation to literature. Long to be remembered was the reading of their own poetry by members



PHI UPSILON OMICRON



Membership in Phi Upsilon Omicron Honorary Sorority is limited to those Home Economics students who have shown superior scholastic ability, integrity of character and qualities of leadership. During the College year, the girls have participated in a national program for Consumer Education and supervised refreshment serving at the Freshman Tea. Most memorable of all Phi U's many activities this year, was their sponsorship of the Charm School

The Pan-Hellenic Organization is a federation of all the women's Greek letter organizations on campus. It consists of members from each sorority who regulate and thresh out the peculiarities of sorority life. Pan-Hell's party for girls interested in sororities annually acquaints the girls with their future sisters. This year Pan-Hellenic took on a new job, that of distributing the student directory, in addition to their old job of running a war stamp-bond booth



PAN-HELLENIC



ALPHA
SIGMA
ALPHA



This year has been momentous in the history of Pi Pi Chapter of Alpha Sig, for this Fall they opened their new house on Tudor Place, a haven of hospitality for our boys home on leave. Here they held their jolly holiday dance with Christmas presents for everyone. Here they held their annual Father's Day Tea. Here in a more serious mood they have contributed time and effort to war service. They have sponsored a "Cards to the Boys Campaign." They have collected money for Russian Relief. And always there has been a zippy Alpha Sig way of accomplishment



ALPHA SIGMA TAU

Year after year, Alpha Sigma Tau presents a one hundred dollar scholarship to a deserving non-sorority girl. This has become a tradition at State. They, too, have entered the sorority fashion parade, stealing the show with their tastefully selected outfits

However, Alpha Sigma Tau has been doing some behind the scenes work which perhaps you haven't heard about. The girls have addressed copies of **The Record** to former State men everywhere in service. They have assisted their faculty sponsor, Dr. Quayle, in keeping the many and complicated service files up to date. Thus our servicemen have been assured of receiving the various pieces of mail sent to them from the College — and promptly. This sorority has done everything expected of it



Arethusa Upsilon Chapter of Delta Sigma Epsilon Sorority came to State only eighteen years ago, but in that short period of time they have built up an honorable record. Besides offering the Bishop Honor Medal, which recognizes superior professional ability, the sorority has acquired a charming house on Lincoln Parkway, a center of fine hospitality. They have a way of getting things done. No one can deny the clever originality of their servicemen's birthday cards, but even more important to those men in service was their sponsoring of the annual Red Cross Drive. No one can or cares to deny Delta Sig's loyalty to State



DELTA SIGMA EPSILON





Pi Kappa Sigma Sorority is about as different an organization as you'll ever run into. Its members accomplish much with seemingly little effort. Pi Kap was the official College greeter to the boys in service. At Christmas and at Easter time, appropriate cards were addressed and sent out. Their apple sucker booth, and their quaint stand at the "Y" Carnival were well patronized. A great achievement of Pi Kap's — support of the war bond and stamp drive



PI KAPPA SIGMA



State has good cause to be proud of Tri-Sig Sorority. Always active in the field of social service, this year Zeta Chapter has worked hard on the adopted school project in Argentina. Their promotion of the Cheer Fund, coordinating unit of all servicemen's committees, was unbeatable at State in 1943-1944. The girls have rolled out the mat at their new house on Dorchester Rd. And State will always roll out its welcome mat for them



SIGMA
SIGMA
SIGMA





We here at State Teachers College take great pride in Theta Sigma Upsilon Sorority. During this past year, Theta Sigs have made a contribution to the College upon which no price could be set. Their assembling of the College Scrap Book has been a huge job. In it are contained letters from our boys in service, clippings about them, pictures of them and their experiences. Sorority spirit and cooperation has risen to new heights this year, with every undertaking being successfully concluded. Theta Sig looks forward to many big years at State and we are looking forward with them to a fulfillment of their ideals



THETA SIGMA UPSILON





SIGMA TAU GAMMA



There is a bit of remorse in Sig Tau's hearts because it is impossible to keep up the life giving element of rivalry with the other fraternities on our College campus



Sigma Tau Gamma Fraternity has endeavored to keep the fraternity spirit alive through this trying period. The Tremont Avenue frat house is the nucleus of this spirit. It is a reference tie to old acquaintances, for men on furlough and a meeting place for members on campus. The annual fraternity White Rose Ball was held again this year in the gym with Marty Albright queen





Hymn for Our Boys

Words by Betty Germoney, Class of 1944

Music by Jeanne Jettas, Class of 1944

Oh Lord, hear Thy ch - il - dren, Anx - ious hearts we lift to Th - ee; — Be

Thou the Faith e - ter - nal That leads a - gain to vic - t'ry. Watch

o'er those who ser - ve us, Whe - ther here or o - ver th - ere, Give

hope a - nd strength, And let them hear our prayer. Oh - pray er.

As you've turned the pages of this book you've probably noticed several organizations conspicuous by their absence. The members of Psi Phi and Delta Kappa Fraternities, and of the Men's Glee Club have for the most part entered the armed services. These organizations have gone inactive for the duration. That they will not be forgotten we salute them here, if only by the mention of their memory recalling names

We of the class of '44 can never put down on paper our feeling of gratitude to you boys who have left our campus to fight the war of survival. All we can do is repeat again the beautiful HYMN FOR OUR BOYS, and by it reaffirm that you are always in our prayers



ELMS



ART EDUCATION CLUB



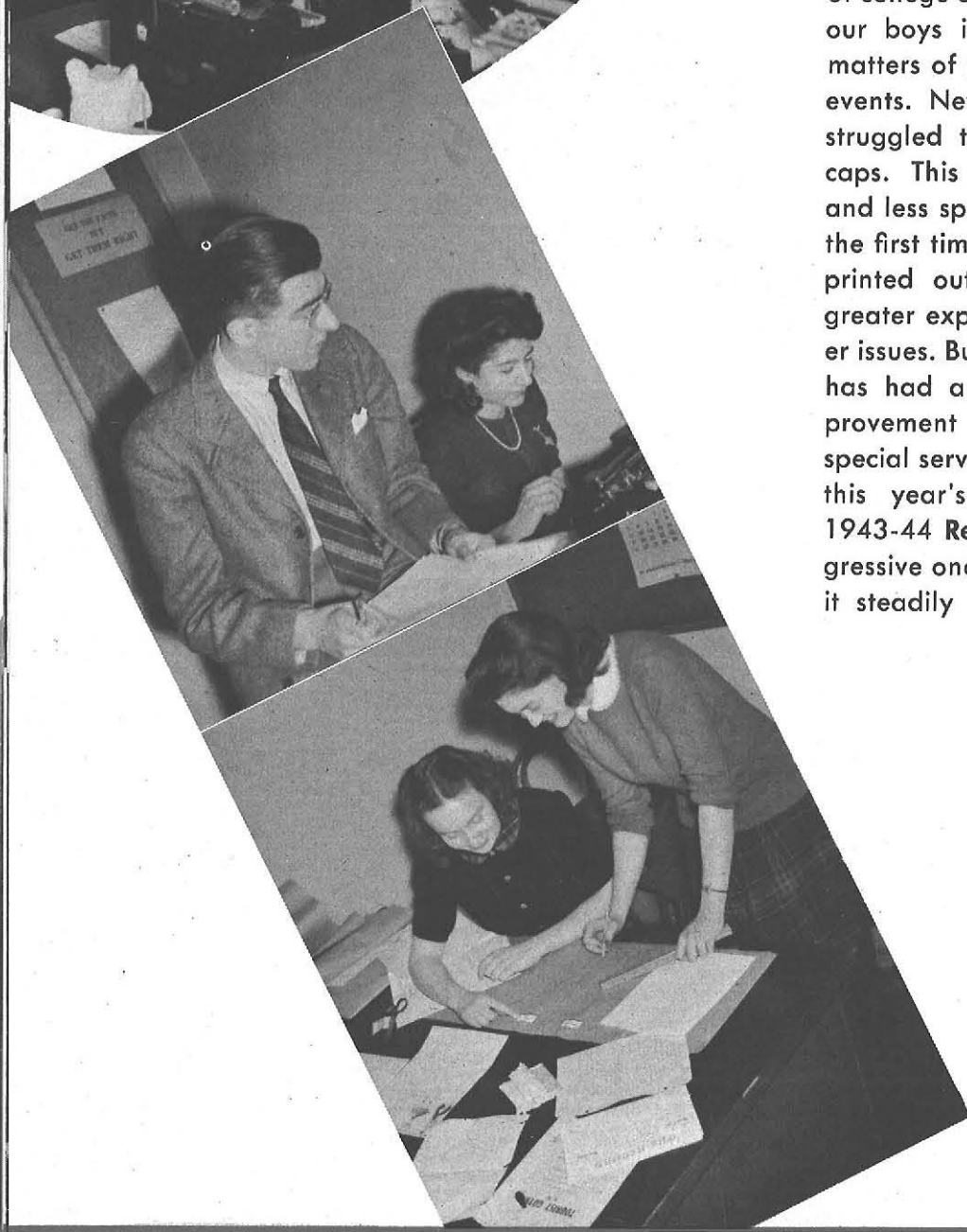
Art Ed Club is a popular organization. They plan successful activities, and they have fun doing it. Unforgettable this year was their Surrealist Ball, with costumes out of this world. Art Ed.'s Bohemian Bazaar is always a hit. It is then that the members sell their priceless arty work for a song, acquaint the rest of the College with their mysterious, amazing way of having fun beautifying their lives

The 1944 Elms has been produced under great difficulties. Members of the staff have worked hard, and long. What you, our friends, see in this year-book is the result of that effort



RECORD

The **Record** is the tie between the College and the student body. It is the medium of student opinion, the record of college activities. It brings us news of our boys in service. It comments on matters of professional and even world events. Never before has a **Record** staff struggled to overcome greater handicaps. This year, there was more news and less space in which to write it. For the first time in history, **The Record** was printed outside the College entailing greater expense and necessitating fewer issues. But despite all this, **The Record** has had a good year. A steady improvement from issue to issue, plus a special servicemen's number have made this year's **Record** noteworthy. The 1943-44 **Record** has tried to be a progressive one. May the coming year find it steadily marching forward at State



HANDBOOK



The Handbook is the Freshman's Bible. Published annually by students with the backing of the Publications Committee, the Handbook contains information about customs, College traditions, academic regulations. It describes not only the activities of the College but also the character of its institutions. The Handbook is as valuable to upperclassmen as to Freshmen

FOREIGN LANGUAGE CLUB



The Foreign Language Club has had a varied season, this past College year, if nothing else. Under the direction of Dr. Messner and Mildred Sharick, club members have gone all out for French War Relief. Clothing has been shipped to the Red Cross, and directly to French Aviation Cadets. Also books and other reading matter. But the Foreign Language Club is not interested in French alone. A special Latin party was held, and was adjudged a big hit. A repeat performance is promised soon. Spanish and German were also given the attention which they deserve — a club meeting being conducted in each of these two languages. The Foreign Language Club sets no high standards for admission—merely an interest in foreign languages



The Non-Resident Association is an organization limited in membership, as the name implies, to women attending State and living away from home. The NRA acts as a Travel Bureau, giving directions, helpful hints, and making away-from-home girls feel at home. Because of the energy expended by club members, their annual toy drive at Christmas time went over the top. All year long NRA has had lots of fun hiking, bowling, and dancing together

NON-RESIDENT ASSOCIATION



FUTURE TEACHERS OF AMERICA

Future Teachers of America is more important now than ever before in its history. This organization is deeply concerned with the impending teacher shortage. Speakers and panel discussions have played a prominent part in the presenting of the facts of the problem. It is up to FTA and the College in general to solve it. Future Teachers of America which has been in existence at State for only three years has vowed that it will not let young America down, and that it will make every effort to raise the standards of our chosen profession of teaching

HOME ECONOMICS CLUB

You probably couldn't tell by looking at its members, but the Home Economics Club is one of the oldest organizations in existence at State Teachers College today. With the aid of guest speakers and intra organization discussions, they lived up to their purpose—of promoting the work of Home Economics, and fostering friendship among its members. The girls sewed while they worked, their biggest task, mending swim suits





You can't put your finger on it—but there's something unusual about the loyalty of the members to their Dramatic Club. It might be those all-night rehearsals, those late suppers, or even that moment just before the show goes on. But whatever it is, it enables the Dramatic Club to keep up a high standard of performance even in these difficult times. The club reached new heights this year with **Once a Pupil** and **Ladies in Retirement**

DRAMATIC CLUB

To become a member of the Club one must earn his way. He may build scenery, sew on costumes, apply make-up, gather properties, help with lights, or—just plain perform on the stage. What the playgoer never sees, are the things that make Dramatic Club productions so polished. May their success, the result of much behind-the-scenes work, and more work, last through the years





FRESHMAN WOMEN'S GLEE CLUB

Many a girl has chosen State as her college for the sole privilege of singing in the Girls' Glee Club. It has, therefore, a good name in the community as well as on campus, and is a training ground for future musical education. Under the leadership of Miss McMahon, the Freshman Women's Glee Club's public debut at the Christmas Festival will be long remembered for its excellence and workmanlike performance.



Seven years at State—that's the enviable record of the Newman Club. One of the later clubs to be organized, it has jumped to the foreground through the never-flagging interest and sincerity of its members, and the zeal of its Moderator, Father Dempsey. Newman Club was formed to promote Catholic culture, fellowship, and social development among the Catholic students of the College. This past year it has done all these things and more. Something about which you might have heard little, are the regular Communions offered for State men in service



NEWMAN CLUB



SENIOR WOMEN'S GLEE CLUB

Senior Women's Glee Club has had a glorious record here at State. This year, under a new director, they have risen to new levels of musical expression. Their harmonizing at the Christmas Festival was just what it should have been, and then some. During the Lenten Season and particularly at the special religious devotions, the Senior Women's Glee Club's devout interpretation of the old familiar hymns left a long lasting mark on the College



ATHLETIC ASSOCIATION

The newly reorganized Athletic Organization is two years old. It is their chief function to guide and supervise all athletic activity on campus. Those combination informal basketball games, swimming meets, and dances were the pride and joy of our own competent AA. Athletic Association arranged schedules for all tournaments, and made available toboggans for student use





For Student Council, 1943-44 was a dream come true. After years of promise and frustration, Council came into its own this year. With a smaller governing body than ever before, it has been able to get things done. Direct student opinion and interest were solicited by the installing of a Suggestion Box in the Student Center. By popular request a Smoking Room supervised by members of Student Council was opened; new student mailbox regulations were made and enforced. In the Spring came Class elections guided by our own new College Association—at last a power, no longer just a name

COLLEGE ASSOCIATION

YOUNG WOMEN'S CHRISTIAN ASSOCIATION

The YWCA is one of the most active organizations on campus. This past year their direct purpose was social service. During the College year the "Y" sponsored a camp for Freshman Women, a Thanksgiving Drive to collect food for the needy, a religious discussion circle, and Lenten services. The "Y" Carnival was held to raise money for the Red Cross and student loan which may be used by anyone in the college. We find it impossible to estimate their values



The Rural Club was organized in 1933 to foster interests in various aspects of rural life. Members of the club have had a busy year. Their social contributions have included a Stage Door Canteen Dance for servicemen and active participation at USO dances. True to its original purpose, the club has continued to keep the community in touch with rural areas. There have been outside speakers, round table discussions, and the usual supervision of the ever growing Bureau of Instructional Materials. Until one attempts practice teaching, he never knows the value of the Bureau, the contribution of Rural Club



RURAL CLUB





ART KRAFT KLUB

AKK was founded in 1920 to promote the principles of character, leadership, and achievement through creative effort. Klub members are chosen from all departments of the college according to their individual talents. Formerly, Stunt Nite was their baby. But that has fled for the duration, and in its place is Club 1300 which shows no sign of closing at war's end. This year, AKK presented to the College a polar-centered map showing the locations of State men in the service. As always, the supervision and decoration of the bulletin boards were managed by the AKK'ers



ASSOCIATION FOR CHILDHOOD EDUCATION

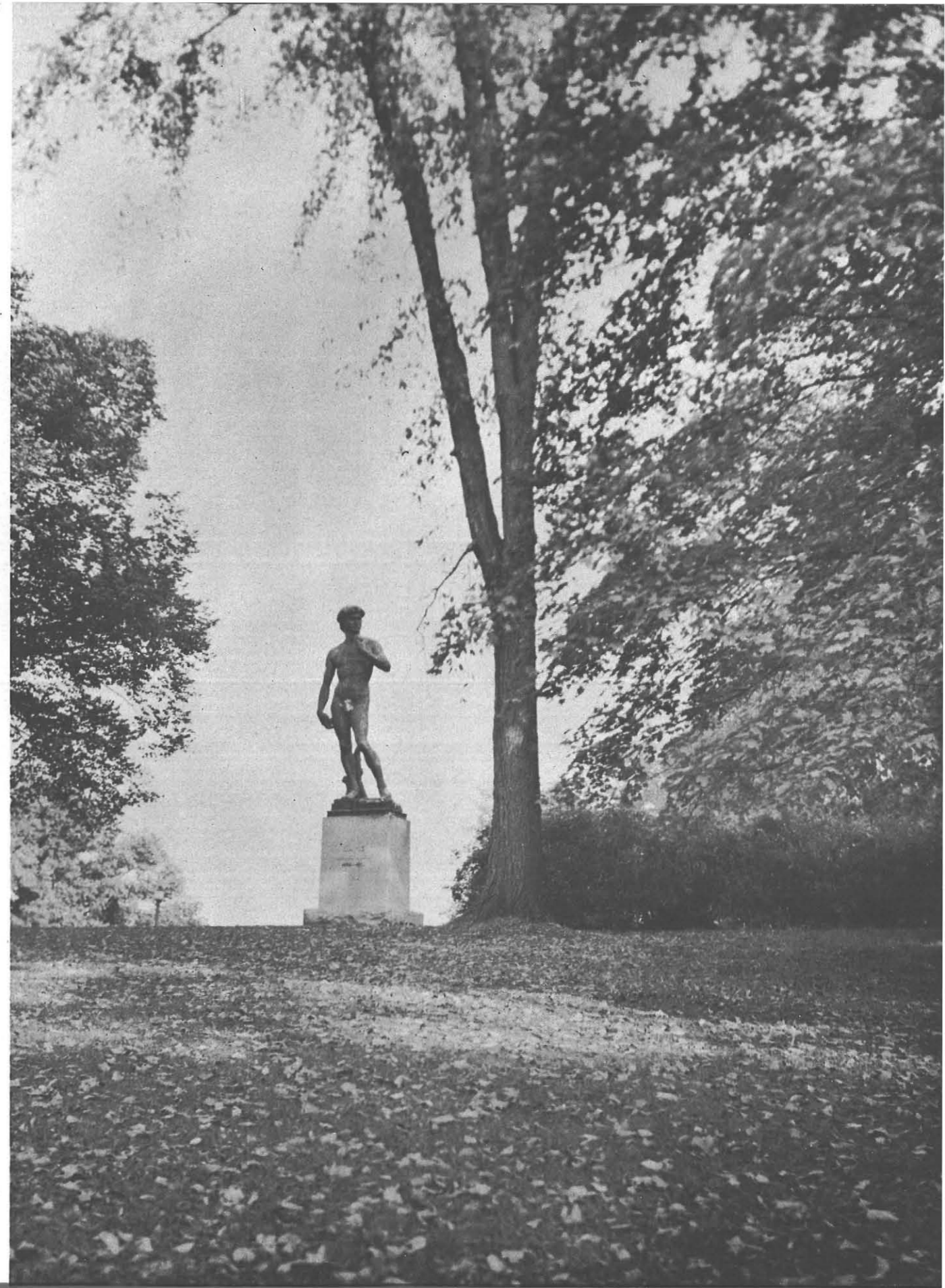
The Association for Childhood Education is one of the most active war industries on campus. In their own quiet way, the members have accomplished a great deal without a great deal of fuss and bother. ACE'ers are storytellers. They pinch-hit for teachers in over-crowded nursery schools and settlement projects, and they tell charming stories to the children. They have kept aware of new trends in the fields of Kindergarten and Primary work through discussions with experts in the fields of rhythm, literature, and the crafts





PSYCHOLOGY CLUB

Psychology Club members never forget their organization. For in it they do such interesting things. Visits to the Buffalo State Hospital are common occurrences with this group. Recently they visited City Court and Police Headquarters studying the practice of criminal psychology and the lie detector, sponsored a party for Crippled Children





Here is something the students didn't see or get a chance to eat—Dr. Rockwell's twenty-fifth anniversary cake—Faculty Party

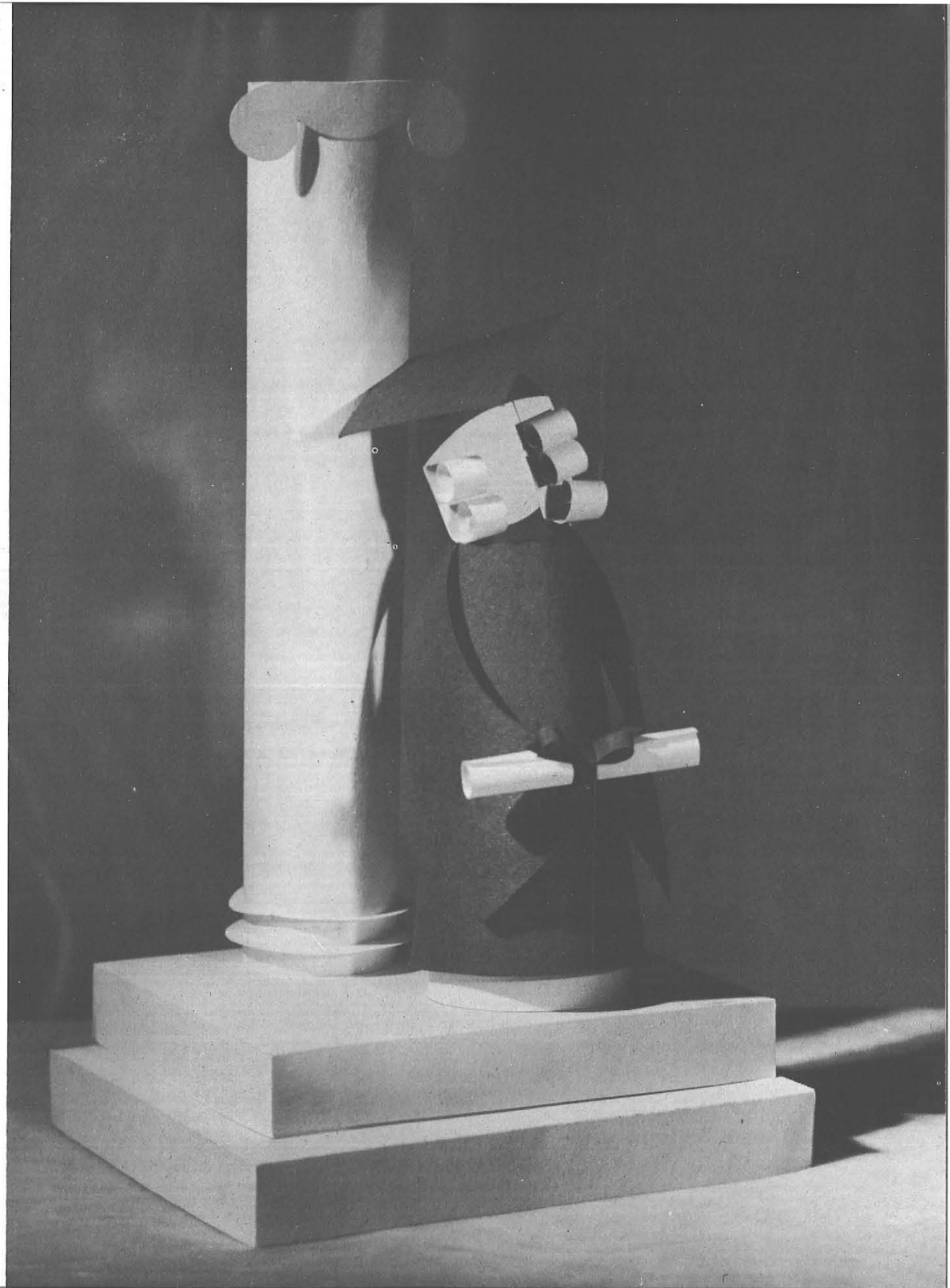


Faculty men waited on table and they only broke one cup—and it was empty





S E N I O R S



Alberta Ackler

Cecelia Adamczak

Bernita Adams

Alberta M. Arcangel

Louise C. Arnold

Betty D. Ashley

B.S. in Home Economics Conewango Valley

B.S. in Education Depew

B.S. in Education Lockport

B.S. in Home Economics Buffalo

B.S. in Home Economics Bergen

B.S. in Home Economics Kenmore



Eloise B. Adams

Sarah Aefvini

Agnes Alvarez

Rosaria H. Balling

Dorothy F. Barclay

Rosalie Bargman

B.S. in Art Education Greene

B.S. in Art Education Buffalo

B.S. in Education Niagara Falls

B.S. in Education Tonawanda

B.S. in Education Snyder

B.S. in Education Buffalo



Mary Buszka

Doris H. Campbell

Juliet L. Cappiello

B.S. in Education Buffalo

B.S. in Education Buffalo

B.S. in Education Batavia



Harriet J. Carr

Annette Clark

Katherine Clark

B.S. in Education Afton

B.S. in Education Rochester

B.S. in Education Syracuse



Abbe Jean Bartlett

Agnes C. Basher

Corinne Rued Better

B.S. in Education Oxford

B.S. in Education Lancaster

B.S. in Home Economics Buffalo



Betty Bel

Betty J. Binder

Mrs. Elizabeth B. Bond

B.S. in Home Economics Ontario Center

B.S. in Home Economics Buffalo

B.S. in Education Kenmore

Mary E. Clark

Babbi Cochran

Chasov L. Coombs

B.S. in Art Education Canton B.S. in Art Education Cazenovia B.S. in Home Economics Canaseraga



Helen Duttweiler

Marjorie Ekde

Jeannette Paddoul

B.S. in Art Education Jeffersonville B.S. in Education Buffalo B.S. in Education Niagara Falls

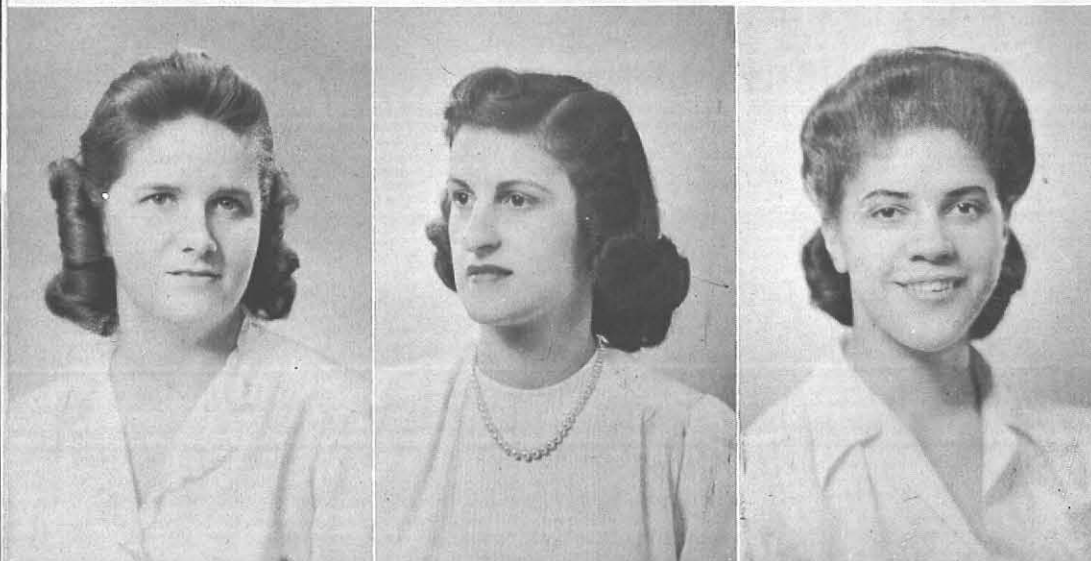


Pearl J. Cooper

Catherine V. DiLizis

Genevieve Dixon

B.S. in Home Economics Lyndonville B.S. in Education Buffalo B.S. in Education Buffalo



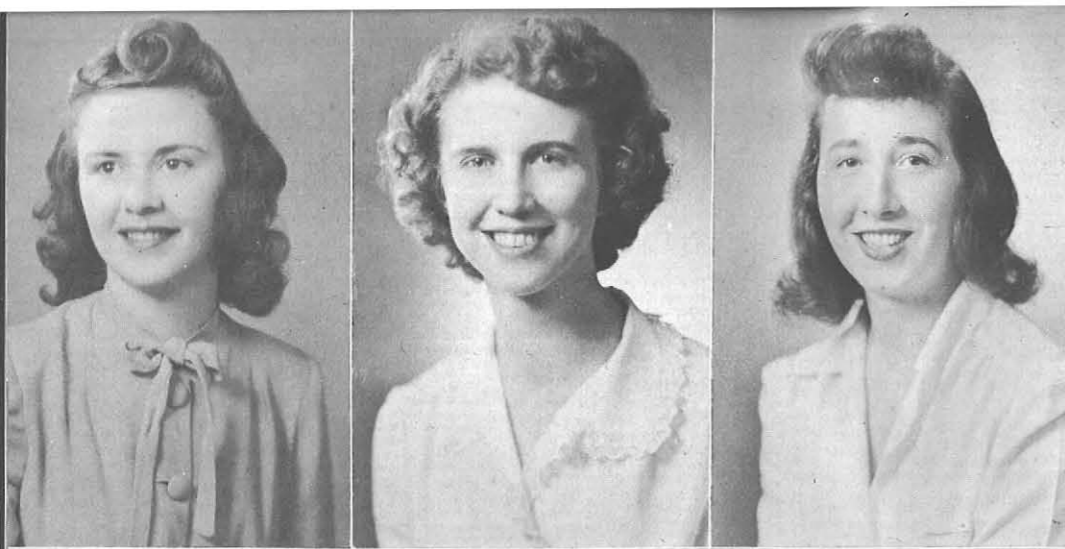
Jane Fairbank

Marjorie Felber

Francis L. Penn

B.S. in Home Economics Ashville B.S. in Art Education Buffalo B.S. in Home Economics Ransomville





Mary E. Breanoff

Ruth D. Ironer

Dorothy McNeil

B.S. in Education Hamburg

B.S. in Education Elmira

B.S. in Education Buffalo

Judy Hemstreet

Pita Margaret Hency

Elizabeth M. Neamey

B.S. in Home Economics Kenmore

B.S. in Education Buffalo

B.S. in Education Eggertsville



Phyllis M. Frantz

Clarine Genet

Betty M. Garmoney

B.S. in Education Strykersville

B.S. in Education North Tonawanda

B.S. in Art Education Buffalo

Virginia Lill

Alkone Gilman

Rose Graffeo

B.S. in Education Whitney Point

B.S. in Art Education Buffalo

B.S. in Home Economics Buffalo



Mildred L. Hood

Arlene M. Jerolds

Jeanne Marie Jettas

Shirley Lack

Dorothy E. Lang

Vicki Lauer

B.S. in Home Economics Buffalo

B.S. in Education Olean

B.S. in Art Education Buffalo

B.S. in Art Education Lynbrook

B.S. in Home Economics Batavia

B.S. in Home Economics Buffalo

Margery R. Kiehl

Adele J. Kimble

Harriette C. Krone

Olga Lawrow

Evelyn M. Height

Audrey Lindholm

B.S. in Education Syracuse

B.S. in Education Buffalo

B.S. in Education Lackawanna

B.S. in Education Hornell

B.S. in Education Akron

B.S. in Education Buffalo



Elizabeth J. Fitchfield

Inez Livermore

Alice Lobaus

Terry McGuire

Ann McGuth

Helen Mc Masters

B.S. in Home Economics Mayville

B.S. in Home Economics Cooper's Plains

B.S. in Art Education Buffalo

B.S. in Art Education Syracuse

B.S. in Education Niagara Falls

B.S. in Art Education Canton



Vera Rucyga

Rose M. Lunghino

Karolka R. McCray

Florence Malone

Mary W. Maynard

Helen M. Mazzuca

B.S. in Education Buffalo

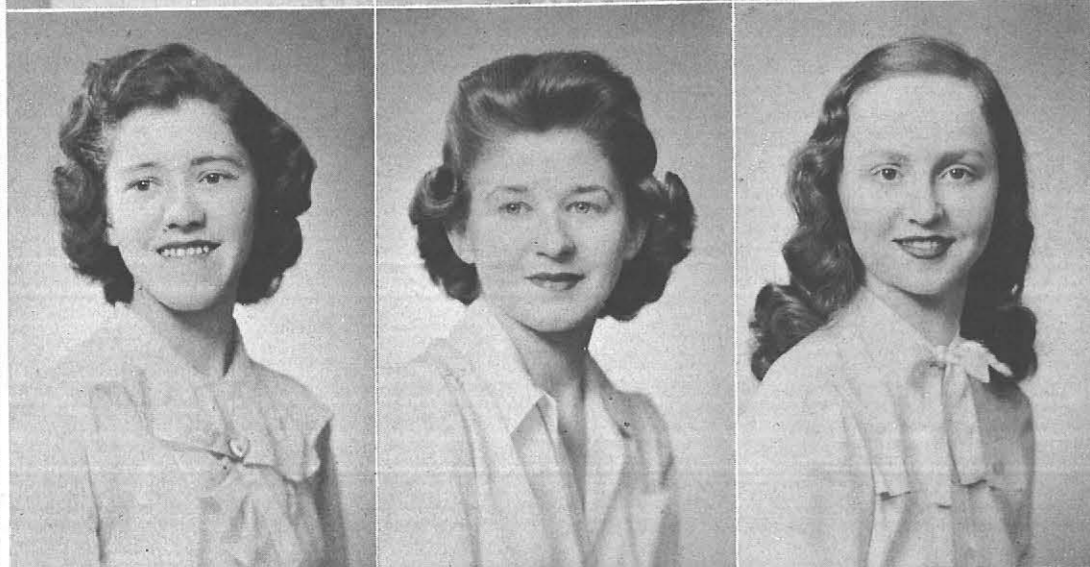
B.S. in Education Buffalo

B.S. in Education Waverly

B.S. in Education Lackawanna

B.S. in Education Kenmore

B.S. in Education Buffalo



Barbara Merriweather

Norma Fabian Metzger

Jan Mitchell

B.S. in Education Buffalo

B.S. in Art Education East Aurora

B.S. in Education Kenmore

Anna Morawka

Meg Murray

Sylvia Lieber Namjet

B.S. in Education Cheektowaga

B.S. in Art Education Kenmore

B.S. in Education Buffalo



Herbert Newlove

Mary Jane Orcutt

Audree Oughterson

B.S. in Art Education Utica

B.S. in Education Buffalo

B.S. in Art Education Buffalo

Katherine Pembroke

Lois Jane Perkins

Jean Mary Perner

B.S. in Education Lockport

B.S. in Education Syracuse

B.S. in Education Buffalo

Josephine A. Pileri

Thelma O. Popp

Irene Putnam

B.S. in Education Buffalo

B.S. in Education Buffalo

B.S. in Art Education Batavia



Lois Lilty

Janice Rance

Lois M. Riebenmacht

B.S. in Education Saratoga Springs

B.S. in Education Buffalo

B.S. in Home Economics Port Leyden

Martha L. Riley

Janet P. Rizzora

Helen Harris Roudet

B.S. in Education Jamestown

B.S. in Education Buffalo

B.S. in Education Lancaster



Kathryn Rupert

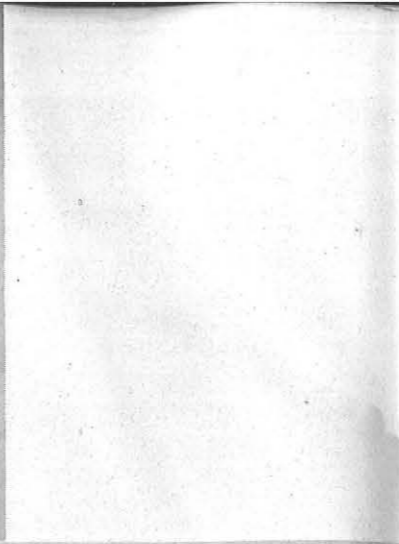
Doris Ruelink

Marie Ryan

B.S. in Education Geneva

B.S. in Home Economics Clymer

B.S. in Education Binghamton



Helen C. Rybak

Alma H. Armand

Lucille Schalge

Mildred Sharick

Ruth E. Sheffer

Beatrice Alvey

B.S. in Home Economics Depew

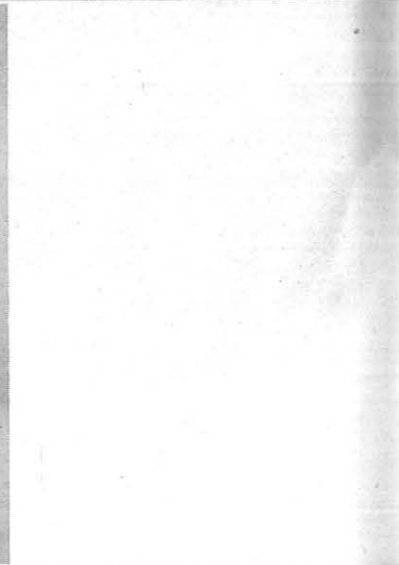
B.S. in Education Babylon

B.S. in Home Economics Akron

B.S. in Education Depew

B.S. in Education Lackawanna

B.S. in Education Niagara Falls



Dorothy Schelble

Ellen Marie Schichtel

Geraldine W. Schmahl

Charlotte Simmons

James D. Singletary

Bertha Smith

B.S. in Education Boston

B.S. in Home Economics . . Orchard Park

B.S. in Education Buffalo

B.S. in Education Buffalo

B.S. in Education Buffalo

B.S. in Education Batavia

Ether Smith

B.S. in Education Buffalo

Lisa Spencer

B.S. in Art Education Kennedy

Helen E. Stanga

B.S. in Education Buffalo

Jean Tuttle

B.S. in Art Education Frankfort

Rose T. Kelone

B.S. in Home Economics Jamestown

Betty Vander Steel

B.S. in Home Economics Rochester

Joyce Thomas

B.S. in Education Buffalo

Ginny Tomic

B.S. in Education Buffalo

Lois Tubey

B.S. in Art Education Geneva

Ruth Van Wie

B.S. in Education Canisteo

Madeleine Vey

B.S. in Education Buffalo

Tina Volpini

B.S. in Education Blasdell





Jeanne Walsh

Arline T. Wandlinger

Janet Wood

Helen Yianilos

B.S. in Home Economics . . . Ogdensburg

B.S. in Education Buffalo

B.S. in Art Education De Ruyter

B.S. in Home Economics Tonawanda

Marge Woodruff

B.S. in Home Economics Geneseo

Elizabeth Zogorb

B.S. in Education Lackawanna

Anita D. Zuberis

B.S. in Home Economics Albany

Earl Horn Jr.

B.S. in Industrial Arts Buffalo



ADDITIONAL GRADUATES

BACHELOR OF SCIENCE IN EDUCATION JUNE 1944

Patience Avery Buffalo Aldene Fox Sinclairville
Iva Farnham Kenmore Helen Hoag Cattaraugus
Marvin Washburn Collins Center

BACHELOR OF SCIENCE IN INDUSTRIAL ARTS JUNE 1944

Montford Schroeder Kenmore

BACHELOR OF SCIENCE IN ART EDUCATION JUNE 1944

Jean White Snyder

BACHELOR OF SCIENCE IN EDUCATION JANUARY 1944

Esther Clark Niagara Falls Mary Jane Orcutt Buffalo
Katherine Gasper Buffalo Hilda Paddock Mexico
Geraldine Gough Lockport Loraine Prichard Williamsville
Doris Hills Forestville Grace Raymond Borber
Sybil Nitzberg Buffalo Everett Stevenson Buffalo
Donald Voltz Buffalo

BACHELOR OF SCIENCE IN INDUSTRIAL ARTS JANUARY 1944

Edward Smith Rochester Joseph Varga Buffalo

BACHELOR OF SCIENCE IN ART EDUCATION JANUARY 1944

Max Waldman Brooklyn Sybil Hutchinson Kenmore

BACHELOR OF SCIENCE IN EDUCATION AUGUST 1943

Janet Isadore Angus Corning Margaret Grace Brown Kenmore
Elsie Bell Tarrytown Lois Catherine Buell Holcomb
Lena Blossom Friendship Margaret I. Carl Boston
Eleanor Louise Bolt Rochester Edna May Chaffee Groton
Helen Laura Bond Binghamton Lucille Marie De Luca Holley
Helen Foley Brandes Belfast Marion Denison Jacksonville
Frederick William Brown Newark Valley Lillian J. Donahue Auburn

ADDITIONAL GRADUATES

Sara Ann Ferraro Rochester
Leona W. Gelder Ithaca
Marian B. Graves Watertown
Eleanor M. Griffin Hudson
Lucy H. Guerra Depew
Margaret Mary Haggerty Binghamton
Mary E. Hand Java Center
Louise H. Harmon Castile
Beatrice Hart Albion
Elna Cora Hartman Elmira
Elizabeth Jean Harvey West Winfield
Laura Adell Havens Cortland
Fannie E. Haynes Arkport
Rhea D. Hobart Lakewood
Arland Tillotson Hotchkiss Dryden
W. Elfrieda Jacob Seneca Falls
Rhoda Mae Owens Jennings Johnson City
Agnes L. Joslin Boonville
Helen M. Kennedy Appleton
Virginia Ruth Kilberer Lockport
Esther Catherine Kohel Strykersville
Shirley I. Kohel Strykersville
Caroline Kohlmeier Salamanca
Helen F. Kyle Geneseo
Anna M. Lempke Florida
Hallis Jean Littlefair Norwich
Sara Louise Lounsberry Brooktondale
Margaret E. Lowery Utica
Mary E. McCarthy Rochester
Eleanor M. McDonough Richfield Springs

Lorraine Marshall Tarrytown
Ruth Wega Mead Johnson City
Irene J. Muniga Olean
Grace H. Nash Buffalo
Duncan A. Nixon Batavia
Kathleen K. O'Hargan Troupsberg
Patricia Mary O'Hern Lancaster
Marietta Agnes Parnell Churchville
Jack Ward Pattyson Hempstead
Dorothy Margaret Pinkel Cold Spring
Lucia Elizabeth Raub Scottsville
Catherine Lois Reed Randolph
Evelyn Elizabeth Ritch Saltaire
Martha V. Saile Batavia
Pauline Bailey Sanford Hornell
Elsie M. Schehl Webster
Elizabeth K. Schnaiter Kenmore
Clara M. Smith Albion
Jeannette Elizabeth Stowell Campbell
Elizabeth E. Streets Clayton
Mildred M. Suits Jordan
Grace E. Sweet Dolgeville
Margaret Laura Taylor Edmeston
Ann Marie Tillinghast Ilion
Marjorie M. Todd Rochester
Mary E. Turnball Batavia
Gladys Linnea Weiss Jamestown
Dorothea Ellen Wilber Otto
Marjorie B. Young Johnson City
Dolores Carlin Zahm Buffalo

BACHELOR OF SCIENCE IN HOME ECONOMICS AUGUST 1943

Dorothea Marie Del Nero Rome Mary A. Stengel Buffalo
Hilda Lee Stein Utica

BACHELOR OF SCIENCE IN ART EDUCATION AUGUST 1943

Betty Elaine Andert Buffalo

1 9 4 4 E L M S S T A F F

Editor-in-Chief Marjorie Felber
Business Manager Herbert Newlove

Associate Editors

Elizabeth Germoney Jeanne Jettas

Art Editors

Iris Spencer Audree Oughterson

Literary Editor Thomas Liddle
Features Editor Alma St. Amand
Service Editor Terry McGuire
Photography Editor . . Patricia MacClure
Typing Editor Martha Tiedemann

Art Staff

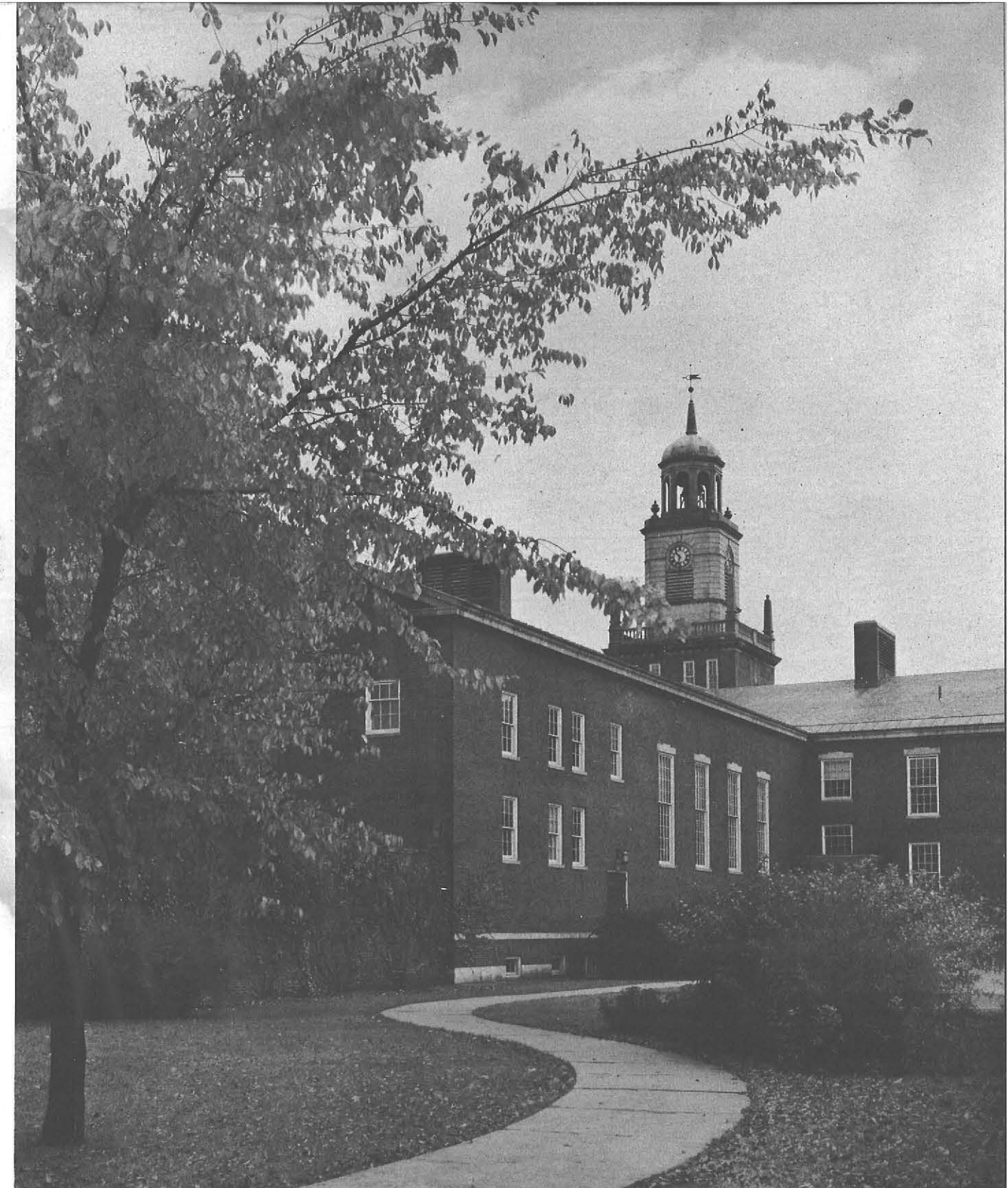
Helen Duttweiler Alkone Gilman
Dolores Mergler Beatrice Palmerton
Janet Wood

Literary Staff

Ann Andrews Margery Flanders
Mary Clark . Jane Harris . Anne Hayes
Marie Nowak Cyril S. Pevney
Kathryn Rupert Helen Tillotson

Typing Staff

Annette Brown Ruth Christman
Phyllis Dodge Shirley Lack



• • • "THE BEST IS YET TO BE"