

State University of New York College at Buffalo - Buffalo State University

Digital Commons at Buffalo State

Elms, Student Yearbooks

Buffalo State Archives: History of the Institution

1-5-1941

The Elms 1941

Buffalo State College

Follow this and additional works at: <https://digitalcommons.buffalostate.edu/theelms>



Part of the [History Commons](#)

Recommended Citation

Buffalo State College, "The Elms 1941" (1941). *Elms, Student Yearbooks*. 30.
<https://digitalcommons.buffalostate.edu/theelms/30>

This Book is brought to you for free and open access by the Buffalo State Archives: History of the Institution at Digital Commons at Buffalo State. It has been accepted for inclusion in Elms, Student Yearbooks by an authorized administrator of Digital Commons at Buffalo State. For more information, please contact digitalcommons@buffalostate.edu.



HAROLD F. PETERSON

Ex Libris



S Elms

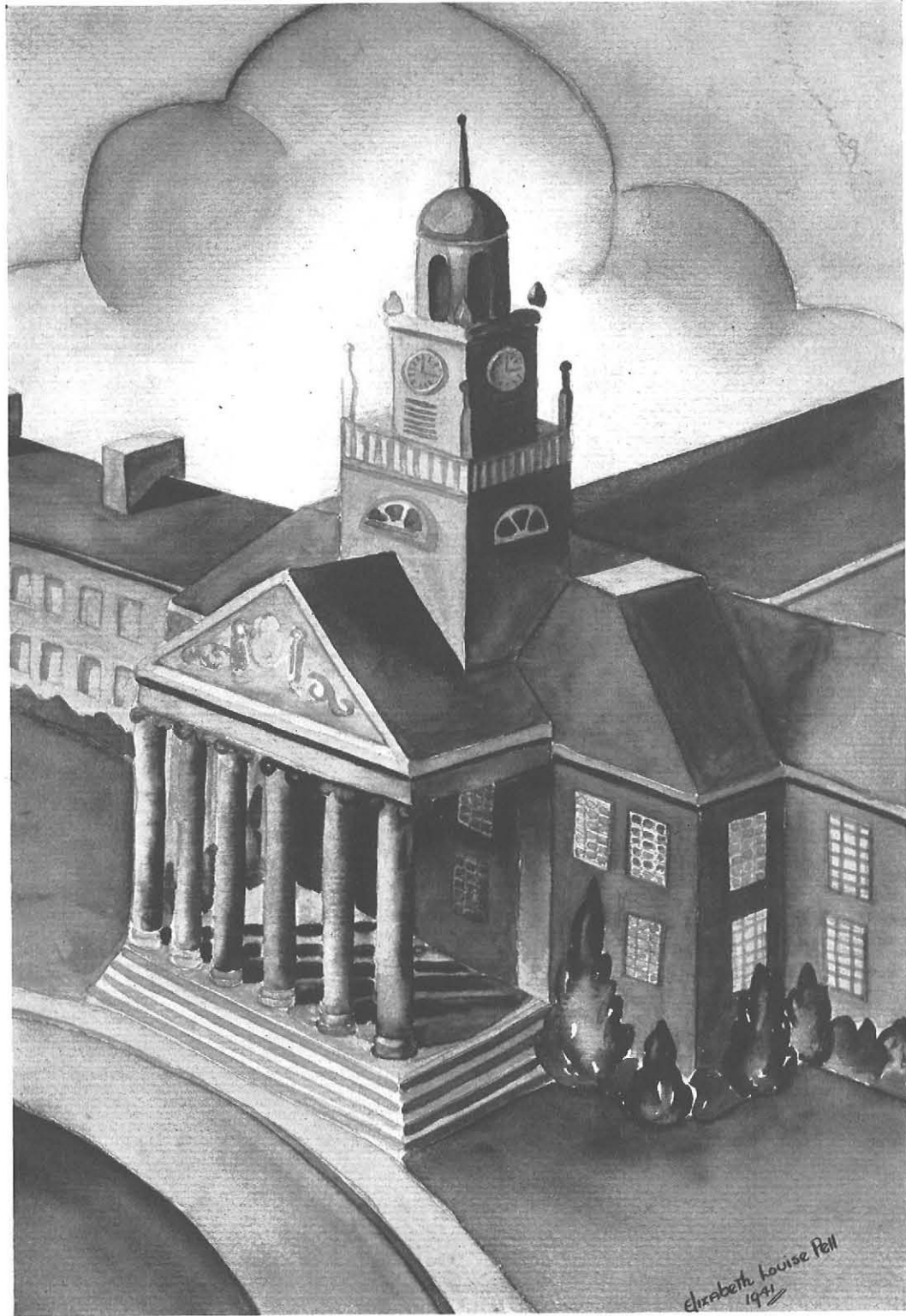
Bertha Dembowski • Editor

Richard Coughlin • Business Manager

Forty-One

STATE TEACHERS COLLEGE

Buffalo, New York



1941

Elms

PUBLISHED FOR THE GRADUATING CLASS
STATE TEACHERS COLLEGE
BUFFALO, NEW YORK

Foreword

THIS IS YOUR YEARBOOK—vivid memories of a happy, exciting year. This is you, as you were in year 1940-1941, epitomized in snapshots and memos. The ELMS staff this year has sought to preserve for you those special fleeting moments, that happy combination of daily trivials and memorable events that have given this year its distinctive personality.

From campus and classroom, from gymnasium and ballroom, the staff has tried to place between the covers of the ELMS, memories of what we, the students, have done between September and June.

It is our hope that you will find interest in these pages today, love them in a year or two, cherish them forever.

Contents:

1. ACADEMIC PROCESSION
2. DAYS FILLED WITH LAUGHTER
CAMPUS FEATURES AND TRADITIONS
3. AND THESE SHALL NEVER DIE
HONORARY FRATERNITIES
SOCIAL FRATERNITIES
ORGANIZATIONS
4. JUST WATCH THAT TEAM GO
SPORTS
5. SING TO EACH CLASS
VERDANT FRESHMEN
BLITHE SOPHOMORES
SOPHISTICATED JUNIORS
STATELY SENIORS



rare humor



critical meditation

thorough scholar



hospitality "well done"

historical "authority"

witty interpretation



DEDICATION

TO DR. ROBERT O. DEMOND, we dedicate this 1941 ELMS in appreciation of his conservative informality, unusual hospitality; and unequalled interpretation of American History. Spiced by his unique humor, stimulated by his Socratic questioning, his classes have been an inspiration to those of us who seek light in a world of darkness. His high standards of scholarship have won the respect and admiration of students and colleagues alike.

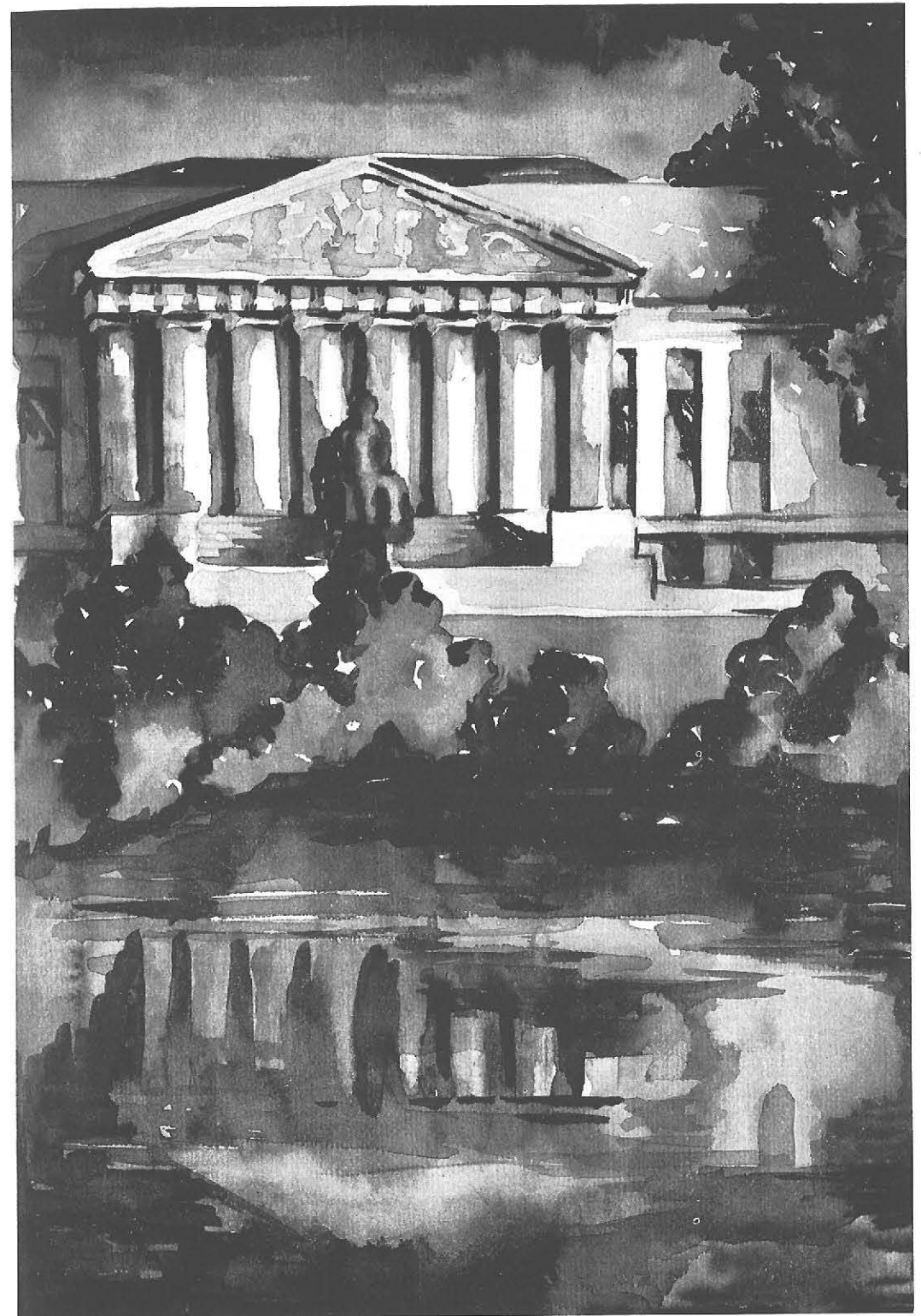
Shadows

Will always find my memory

Deep in the bygone used to be

*And then once again in the hush of the
twilight and shadows*

You're with me



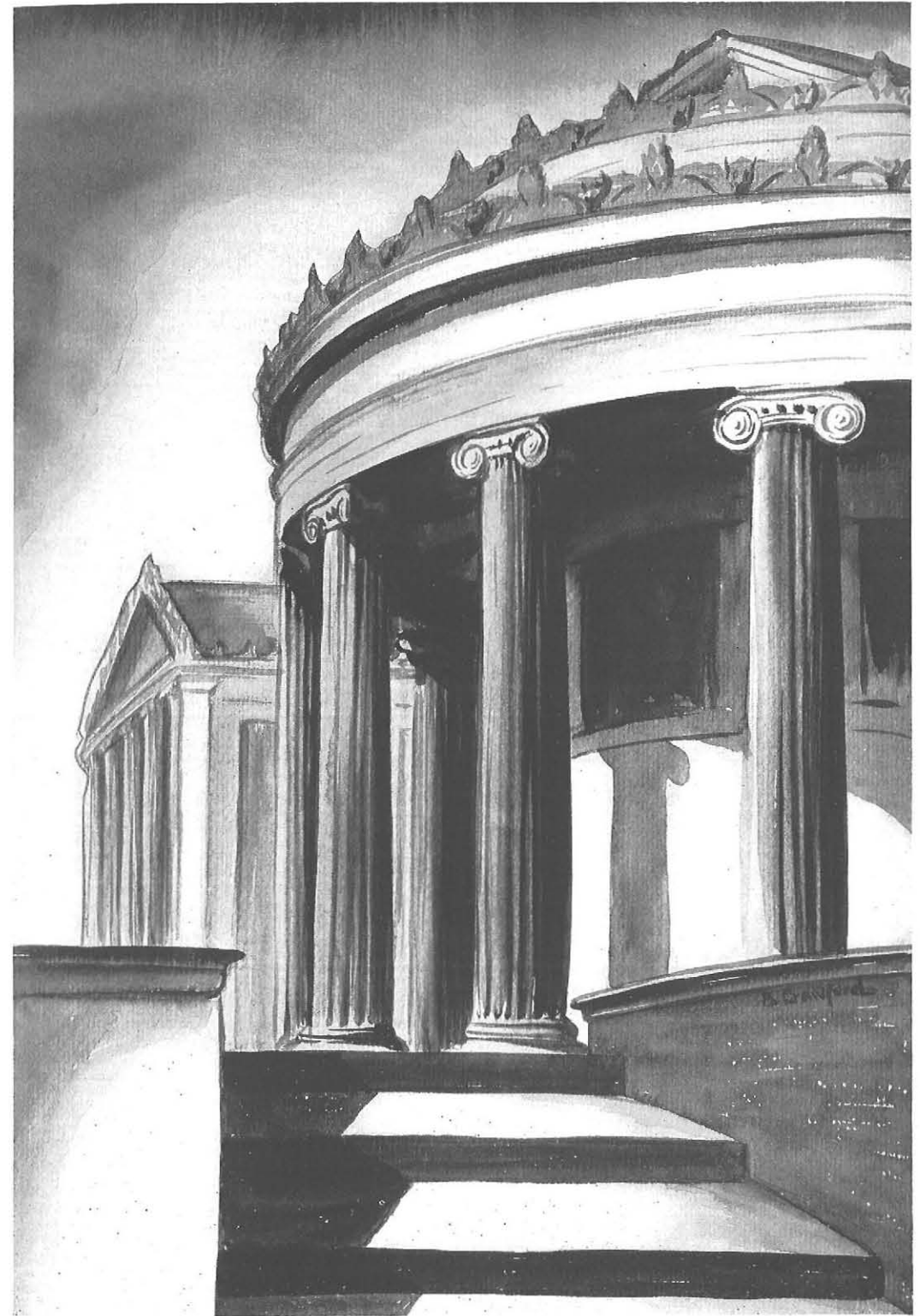
Shadows

And every breeze that wanders by

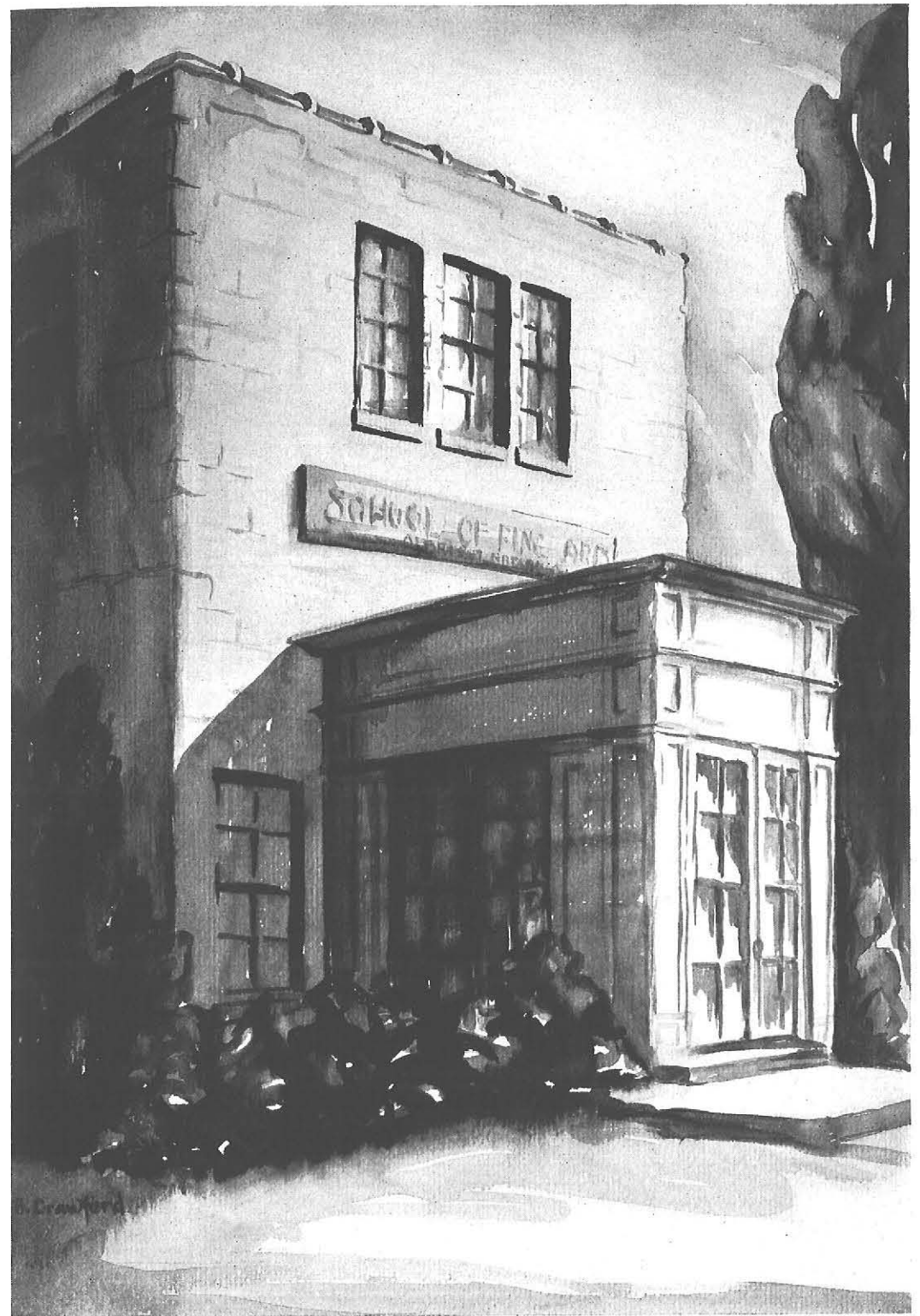
Whispers to me . . . your fond good-bye

*Oh please remember the traditions that
we've treasured*

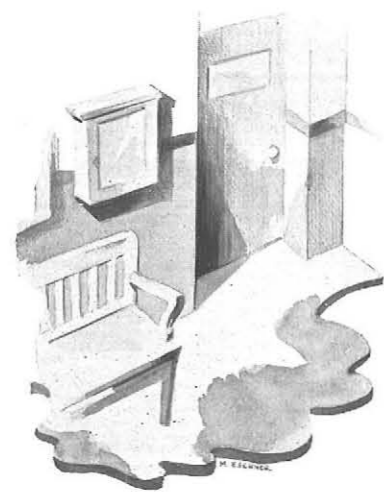
Ne'er let them die



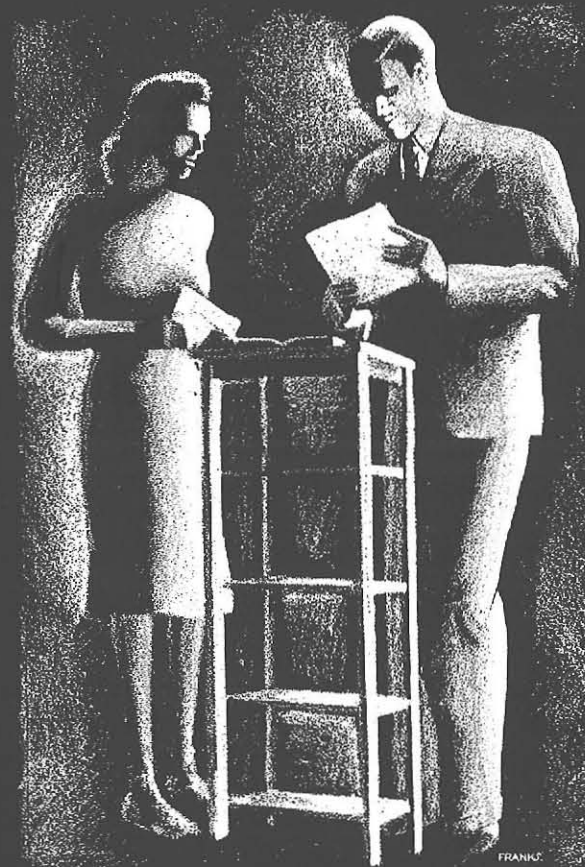
Echoes of the campus
Come and fill our hearts



*Give us just this memory
Before we depart*



Academic Procession



FACULTY

They stand before us, the finished product—teachers. They are the models, after which we, the raw material, shall be fashioned. With pride and admiration, we look up to these experienced faculty members. They are leading us along the “royal road to learning.” We see them as the symbols of academic achievement we are striving to attain—our faculty . . . the academic procession.



Harry W. Rockwell, President

OUR PRESIDENT . . . loquacious, magnetic, thorough . . . the amateur who looks at the world, sometimes with mature optimism, sometimes with undeniable pessimism . . . full of undying zeal for improving campus life and campus activities . . . severe critic, ever raising the standards beyond our reach.

ADMINISTRATION



RALPH HORN
DEAN OF MEN



CATHERINE E. REED
DEAN OF WOMEN



ROBERT E. ALBRIGHT
Professor of Sociology, Director of Extension

GRACE A. ALLEN
Assistant Director of Training, Assistant Principal of the
School of Practice

CHARLES B. BRADLEY
Professor of Art Education

SHERMAN G. CRAYTON
Professor of Education

ROBERT O. DEMOND
Professor of History

REUBEN S. EBERT
Professor of Mathematics

OSCAR E. HERTZBERG
Professor of Psychology

RUTH E. HOUSTON
Professor of Health Education

ESTHER MCGINNIS
Professor of Home Economics

CHARLES A. MESSNER
Professor of Languages

IRVING C. PERKINS
Professor of Vocational Education

CHESTER A. PUGSLEY
Professor of Elementary School Administration, Principal
of the School of Practice

CHARLES C. ROOT
Professor of Education, Director of the Summer Session

MILDRED L. SIPP
Professor of Home Economics

PAUL W. SLOAN
Professor of Education

HARRY J. STEEL
Professor of Education, Director of Training

JOHN M. THURBER
Professor of English

KATE V. WOFFORD
Professor of Rural Education

RAYMOND M. FRETZ
Assistant Professor of Science, Acting Dean of Men

ANNA M. GEMMILL
Assistant Professor of Science

MINA S. GOOSSEN
Assistant Professor of English and Dramatics

IRENE HIRSCH
Assistant Professor of Education

EILEEN MULHOLLAND
Assistant Professor of English

MARTHA S. PRATT
Assistant Professor of Home Economics Education

GEORGE M. QUACKENBUSH
Assistant Professor of Vocational Organization

MARGARET S. QUAYLE
Assistant Professor of Education

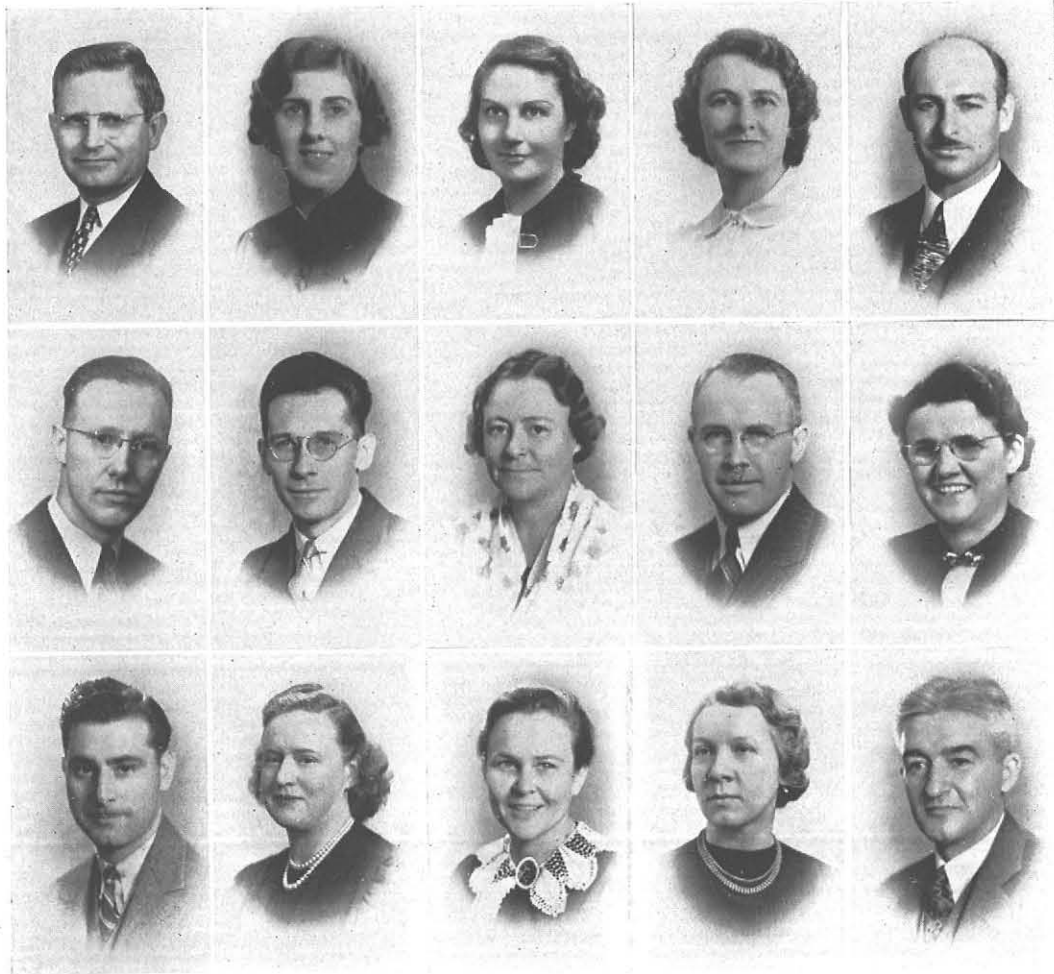
ESTHER F. SEGNER
Assistant Professor of Home Economics Education

RUTH E. SPEIR
Assistant Professor of Music

KATHERYNE THOMAS WHITTEMORE
Assistant Professor of Geography

GEORGE L. BOYD
Instructor in Mathematics and Science





HOMER A. BRUCE
Instructor in Education

MARION A. CLARK
Financial Secretary

RUTH M. CLARK
Instructor in Art

VELMA R. CLARK
Instructor in Home Economics

HUBERT E. COYER
Instructor in Health Education and Coach

HAROLD C. CRAIN
Instructor in English

STANLEY A. CZURLES
Instructor in Art

MARION P. DANA
Instructor in History

GEORGE C. DECKER
Instructor in Woodworking

MARGARET DUPRE
Instructor in Science

JOHN FONTANA
Instructor in Mechanics

VIRGINIA M. FROST
Instructor in Physical Education

HERTHA S. GANEY
Instructor in English and Latin

ELEANOR M. GOVER
Instructor in Sixth Grade, School of Practice

ANDREW W. GRABAU
Instructor in English

MARGARET A. GRANT
Instructor in Home Economics Education

DANIEL GROSSMAN
Instructor in Art

FRANCES G. HEPINSTALL
Head Librarian

CAROLYN W. HEYMAN
Instructor in Art

DAVID R. HODGIN
Instructor in English

GEORGE E. HUCKINS
Instructor in Printing

EDNA W. HURD
Instructor in Music

MARY L. JAMISON
Kindergarten Instructor, School of Practice

ARLINE JOHNSON
Instructor in Home Economics Education

HARRY C. JOHNSON
Instructor in Mathematics and Science, School of Practice

RUTH MCLEAN KARCHER
Instructor in Art

FAYE KEEVER
Instructor in Home Economics

ISABEL HOUCK KIDENEY
Registrar

INEZ M. KNAPP
Instructor in Fourth Grade, School of Practice

MARY LOUISE McMAHON
Instructor in Music





LESTER B. MASON
Instructor in History

MARTHA G. METZ
Instructor in First Grade, School of Practice

EDWARD L. MORRICE
Instructor in Methods and Practice Teaching

MAY C. NYE
Instructor in Home Economics

STELLA O'REILLY
Instructor in Fifth Grade, School of Practice

RUTH PALMER
Instructor in Home Economics

HAROLD F. PETERSON
Instructor in Economics and History

GERTRUDE ROACH
Instructor in Health Education

THERESA A. ROEHSLER
Instructor in Second Grade, School of Practice

MILDRED S. ROESSER
Instructor in History

HAROLD J. ROESSER
Instructor in Science

ALMA R. ROUDEBUSH
Instructor in Home Economics

WINIFRED SALOM
Instructor in Health Education

MURIEL S. SHOEMAKER
Instructor in Third Grade, School of Practice

MARGUERITE STOCKBERGER
Instructor in History and Social Studies, School of Practice

M. MELVINA SVEC
Instructor in Geography, School of Practice

CHARLES A. VAIL
Instructor in Science

WALTER B. WEBER
Instructor in Electricity

D. KENNETH WINEBRENNER
Instructor in Art

ROSAMOND OLIEF ABATE
Assistant Librarian

ALEEN BEYER ACKERMAN
Assistant in Extension Department, Director of Publicity

MARION F. AYERS
Assistant College Nurse

HARRY W. CURTIN
Superintendent of Buildings and Grounds

CHARLOT MOEHLAU FETTERMAN
Assistant Manager of the Bookstore

MARY R. FONTANA
Manager of the Bookstore

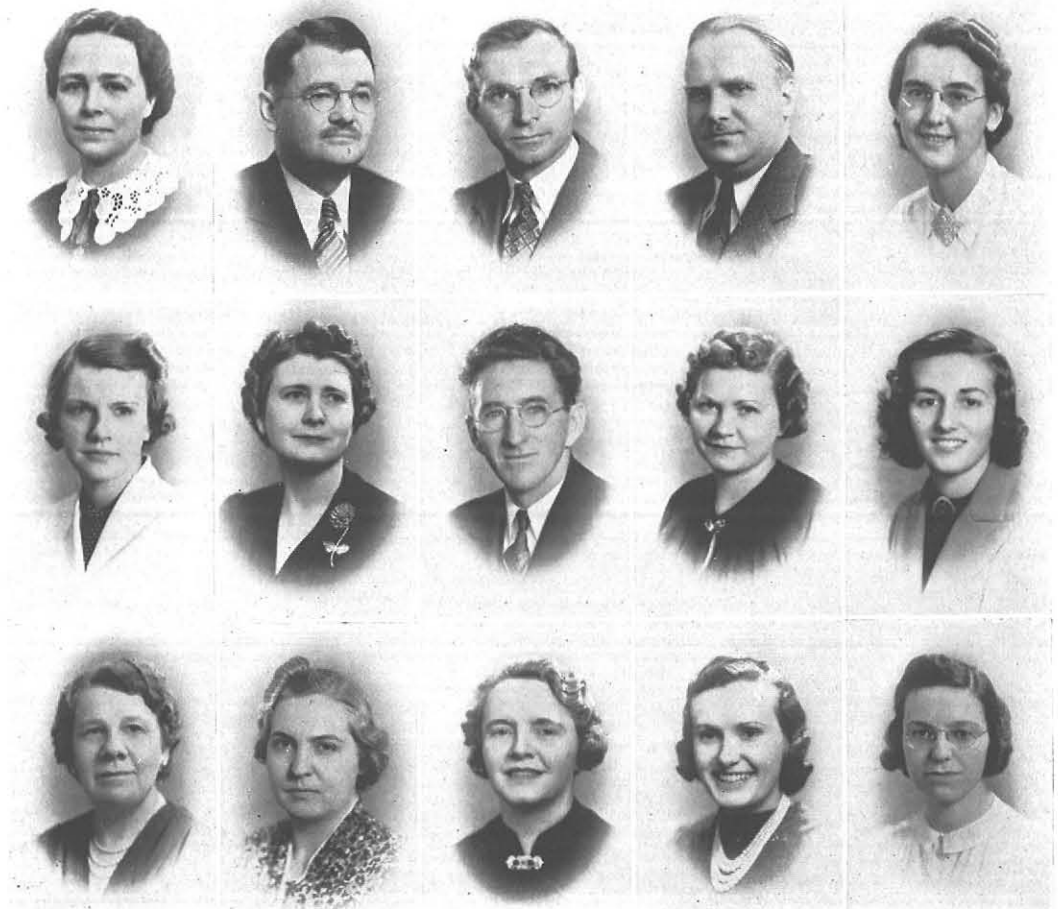
MABEL B. GILBERT
Cafeteria Director

CAROLINE KINSEY GORDNIER
Alumni and Placement Secretary

ETHEL M. H. HANSEN
College Nurse

AMALIA L. ONODY
Assistant Registrar

KATHRYN S. GRAHAM
Senior Stenographer





HAZEL S. BLATT
Stenographer

AGNES H. LOUCHREN
Stenographer

JANE L. DIADDARIO
Stenographer

MARY M. MAY
Stenographer

BERDENA C. DOLBERG
Stenographer

ROSEMARY G. FORNES
Stenographer

Local Board of Visitors

EDWARD H. BUTLER

MOREY C. BARTHOLOMEW

WILLIAM WARREN SMITH

President

Secretary

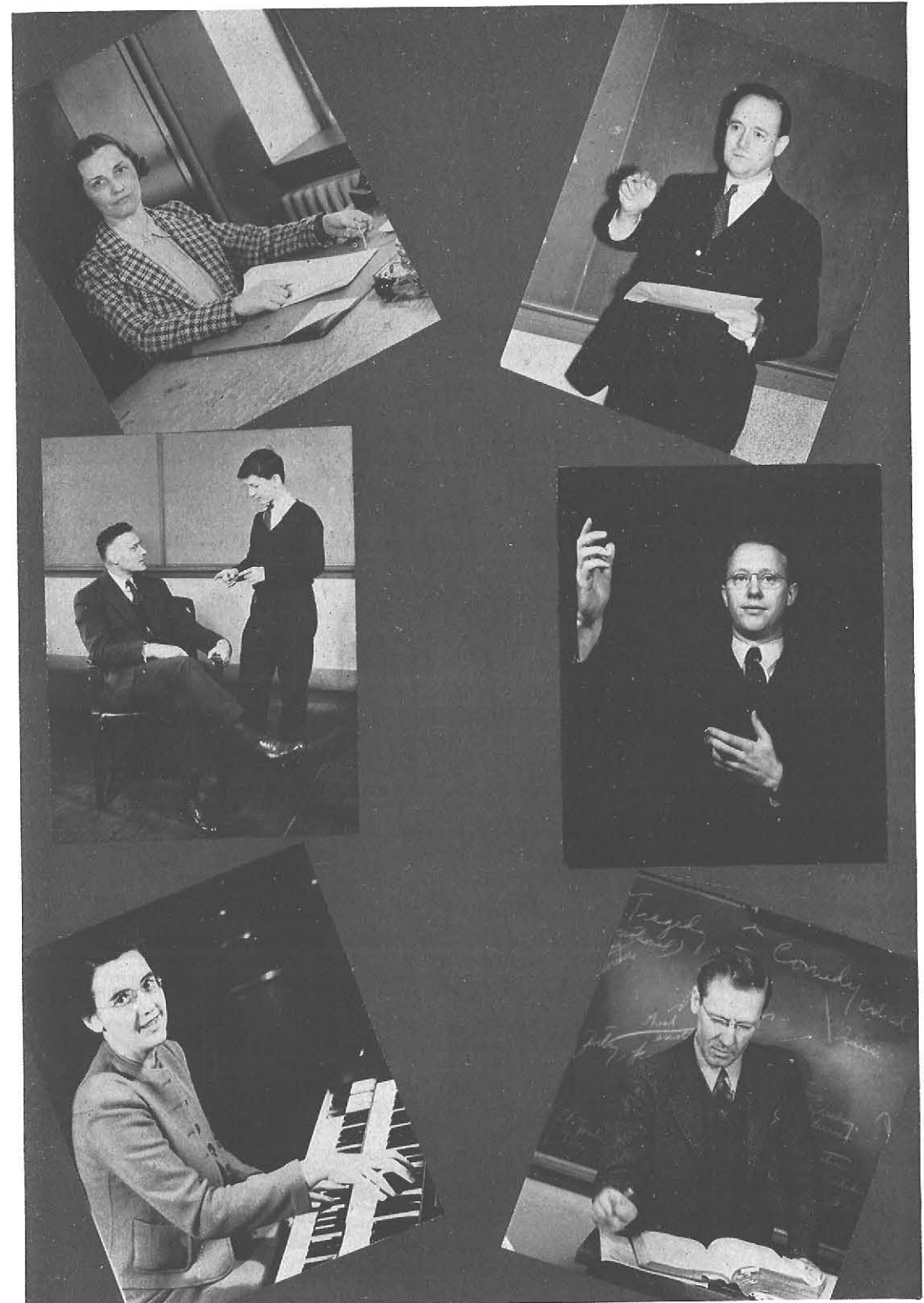
Treasurer

THOMAS B. LOCKWOOD

DANIEL J. KENEFICK

ALBERT HART HOPKINS

HELEN Z. M. RODGERS



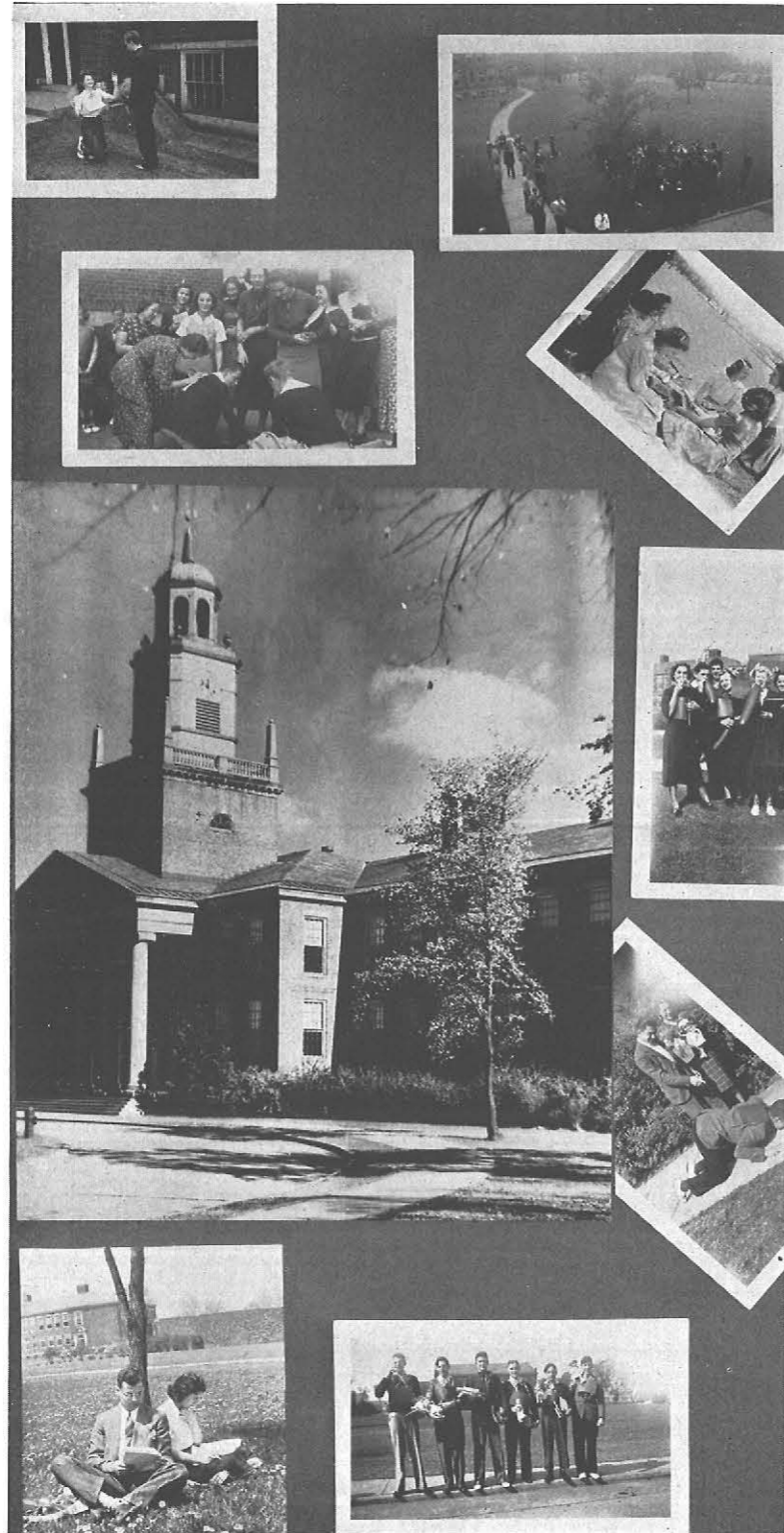
Days filled with Laughter



FEATURES

The long procession passes before your eyes. You as you are at work; you as you are at play. The kaleidoscope of college life—you full of Christmas spirit, merrily decorating at Holly Hanging; you in all your elegant finery, dreamily dancing at the Junior Prom and the Senior Ball. Good times of a glowing year are now marching memories—1000 lusty voices ringing out at Interclass Sing; that gaiety at Moving-Up Day; and the thrills and excitement of Stunt Night. Preserved here are the cherished fleeting moments which would have escaped us forever. . . the days filled with laughter and friendships.

First whiff of real college . . . first green days filled with massive name tags, unsure "hellos" to austere upperclassmen . . . Alma Mater sung as solo, as a duet, even as a chorus . . . proposals in the most awful places and at most inconvenient times . . . baby dolls . . . balloons, peanuts by the nose along a grating sidewalk . . . piles of books to be carried for those silly sophs . . . signatures, signatures and still more autographs . . . frosh court brings out hidden talent . . . at the end comes the tug-of-war; one last chance to show the sophs who's who . . . Then frosh camp . . . gangs of scared newcomers . . . complacent upperclassmen taking competent charge . . . describing the joys and good times of college life . . . hiking through the colorful woods . . . do you come from Podunk? Oh, do you know Blu Bluefuss? . . . how about a set of tennis . . . you see that teacher over there? They say she gives horrible tests . . . skits tonight . . . what'll we do? Treasure hunt? . . . ah, suckers in the treasure chest . . . sunny Sunday morning . . . the last breakfast . . . goodbye . . . but it's the beginning of a college career at State . . . As long as you live will you ever forget the scene of the tower silhouetted against the sky in the moonlight . . . or the campus completely buried under a blanket of snow . . . School of Practice . . . student teachers dashing in . . . and out . . . wild-haired geniuses carting huge drawings into the art school . . . all these become a part of the you that's going to college . . .

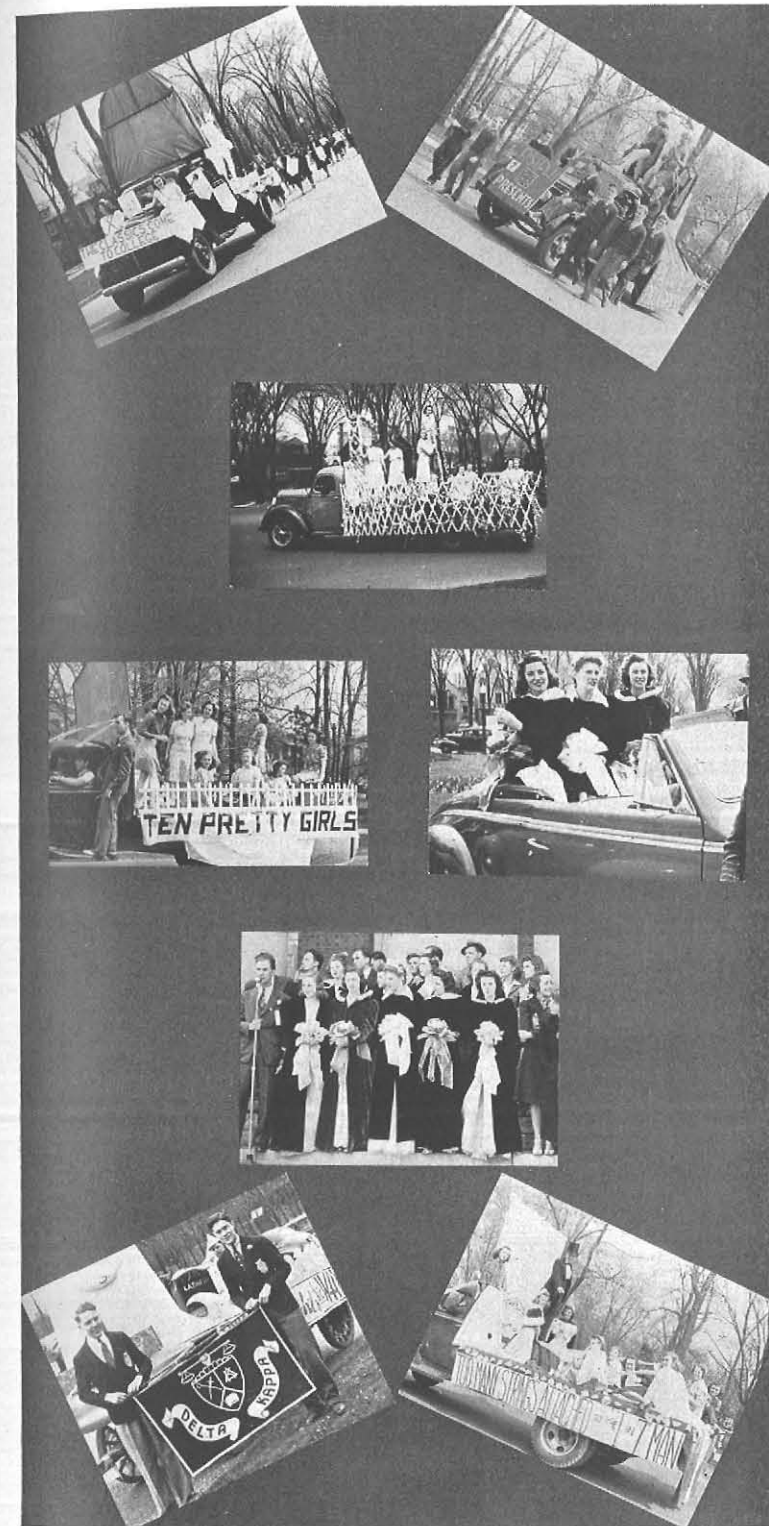


Delta, Alpha, Phi, Omicron and all the rest . . . secret mottoes and pledges wreathed in a Greek name . . . promises of undying devotion . . . and loyalty . . . new found brothers . . . that extra-special smile from someone . . . that meaningful glint in a sister's eye . . . dances with those you love, your fraternity pals and your best beaux . . . bull-sessions . . . intimate meetings . . . special news . . . special jokes . . . doing things together . . . sales in the student center, selling everything from green carnations to cookies . . . dances in the gym . . . etiquette for sorority study tonight . . . binding friendships that will live always . . . Long after the memories of A's and C's have disappeared, there will be thoughts of jolly get-togethers . . . parties with other fraternities and sororities . . . Inter-fraternity Ball every fall . . . symbol of extended good fellowship . . . pride in showing off your date . . . fraternity pins hung on your favorite girl . . . rushing season . . . meeting people . . . judging . . . weighing . . . deciding . . . pledging . . . dressing in grotesque outfits . . . performing humiliating tasks . . . carrying pails and wearing earrings and hair bows . . . laughed at . . . and laughing . . . drawn closer and closer into the bond of brotherhood . . . Pan-Hel dance . . . everyone radiant . . . new gowns of pale billows . . . or sleeky sophisticated formals . . . best fellows in attendance . . . meeting your sorority sisters' "one and only" . . . parting at graduation . . . joining alumni chapters . . . coming back to meetings to reminisce . . . and sigh.

State's Queen of the May for 1941 . . . dark, intelligent, soft spoken Joan . . . her eyes like deep pools . . . haunting . . . mysterious . . . her smile demure in spite of its quiet warmth . . . willing to offer her assistance . . . with prudence and care . . . reliable as the tower chimes . . . an unobtrusive friend . . . wisdom profound as the deep sea . . . this is our May Queen . . . our choice for the Queen of '41.

Ready to wait upon her majesty's word are the attendants . . . Seniors . . . Peggy . . . a gay ingenue . . . sparkling, flirtatious eyes . . . an Irish pug nose . . . and dimples . . . friendly to all . . . and perfectly lovable . . . Norma of the soft black hair . . . penetrating, understanding . . . and ever ready with sympathy . . . companion alike to man and woman . . . Juniors send Arlene . . . cute . . . demure as the first breath of spring . . . quiet with calm consideration . . . disinclined to seek out recognition . . . Ruth, the sporty one . . . black hair, intelligent eyes with sparkles of gayety . . . warm-hearted smile . . . ever ready for what comes . . . loyal . . . trustworthy . . . has a good time always . . . Sophomore attendants . . . Jean, the honey blond . . . perfect features . . . a brilliant smile . . . blithe as a mocking bird . . . acts with charming absurdity . . . gay . . . fun . . . Isabel . . . full of charming naivety . . . with a hint of fascinating sophistication . . . soft eyes . . . young, refreshing . . . American girlhood at its best . . . From the Freshman class . . . Betsy . . . sleek suavity . . . stately as a duchess . . . streamy blond tresses . . . sometimes in pig-tails . . . blue eyes clear as ice . . . soft spoken . . . a bewitching smile . . . Mary . . . simple, dark and lovely . . . sparkling eyes with knowing depths only slightly veiled in a dazzling smile . . . and quiet, dependable friendship.

These are our court for the Moving-Up Day celebration.



Moving-Up Day, 1940 . . . Dark assembly filled with the hush of anticipation . . . a gleaming stage with the royal throne in the center . . . into the silence the strains of stately martial music first creeps, then pours forth . . . down the aisles float lovely wisps of femininity . . . huge bouquets of riotous spring blossoms . . . then Her Royal Highness . . . the queenliest beauty of them all . . . a gracious smile . . . ooh . . . Then the court in session . . . Seniors reminisce . . . Juniors brag . . . Sophomores strut . . . Freshmen promise grand achievements . . . those to leave lay down their blooms . . . they are soon picked up . . . the torch to be carried forward . . . each class member gives up his flower, the symbol of his rank . . . and assumes another . . . one more year gone by so swiftly . . . so full . . . now another rung to climb on the ladder to the summit . . . another challenge to be met and conquered . . . for the Freshmen, the first step forward . . . half-way mark for the Sophomores . . . on to the end for the Juniors . . . a regretful finis murmured from the full hearts of the Seniors.

On to the parade . . . a lovely Spring day . . . sun-filled, clear and windy . . . beautiful girls on the back of a convertible . . . float models in flimsy garb shivering and smiling . . . parade of progress on a fraternity float . . . streamers of gaudy crepe-paper . . . virile men, showing their brawn . . . huge heads on the A. K. K.-ers . . . bulky but empty heads . . . parade of floats winding out of the drive . . . gangs of spectators jogging alongside the creeping trucks . . . back to Alma Mater . . . back to the crowd gathered on the portico . . . excited, cheering, predicting, anticipating . . . watching the judges for a nod or gleam . . . a breathless hush while the announcer approaches the mike . . . third . . . second . . . the winner!

And these shall never die



ORGANIZATIONS

The power behind the throne or the incentive behind scholastic achievement is the organization. We have learned to fill our days chuck full of extra-curricular activities. Every available moment not devoted to academic work is spent in some absorbing outside interest. We are caught in a stride which has swept us into a dilemma of activity. We cover the campus news feverishly; we raise our voices in harmonious song in the glee clubs; we act behind the footlights like true thespians; we play expertly under the baton; we debate—all these are outlets for expression of engrossing interest . . . and these shall never die.



WILLIAM EXTON, Secretary-Treasurer



CHARLES TURCOTT, Vice-President



CHARLES WEIGAND, President



ALPHA

"In Spring a young man's fancy turns to love," but here at State, everyone's fancy, regardless of sex, turns to—Alpha. Happy are those Juniors and Seniors who thrill to the "Tap" at the Senior Ball. Selected

for outstanding leadership in college activities is a limited number of "brain trusts" who become members of Alpha Society through this traditional tapping ceremony.

One of the outstanding successes of the year was the Leadership Day program at the Trap and Field Club. There, the faculty mingled freely with the "campus leaders," and discussed problems and philosophies of leadership.

The next coup of Alpha was Organization Day. In a regular assembly program, every organization on campus was presented to the College, chiefly for the benefit of the Freshmen.

Sponsored by Alpha, the traditional Holly Hanging once more bedecked good ole' Alma Mater in her festive Christmas robes. This year, the prize went to the Juniors for their clever transformation of the Student Center.

MEMBERS

RUTH ALBRIGHT
CHARLES MCCARTHY
BETTY SCHREINER

BERTHA DEMBOWSKI
JEAN MAYER
CHARLES TURCOTT

WILLIAM EXTON
ROBERT POTTER
CHARLES WEIGAND





TAU CHAPTER

EPSILON PI TAU

January 1940-41

Office

January 1941-42

CHARLES F. TURCOTT	<i>President</i>	KENNETH PHILLIPS
LINDSAY G. FARNAN	<i>Vice-President</i>	JOSEPH S. ZAHM
HUGH J. HASLETT	<i>Treasurer</i>	HAROLD G. GILBERT
PAUL E. DAUCHER	<i>Recording Secretary</i>	BOYD P. CAMPBELL
CHARLES F. WEIGAND	<i>Corresponding Secretary</i>	CARLTON J. GERBRACHT

MEMBERS OF THE CLASS OF '41

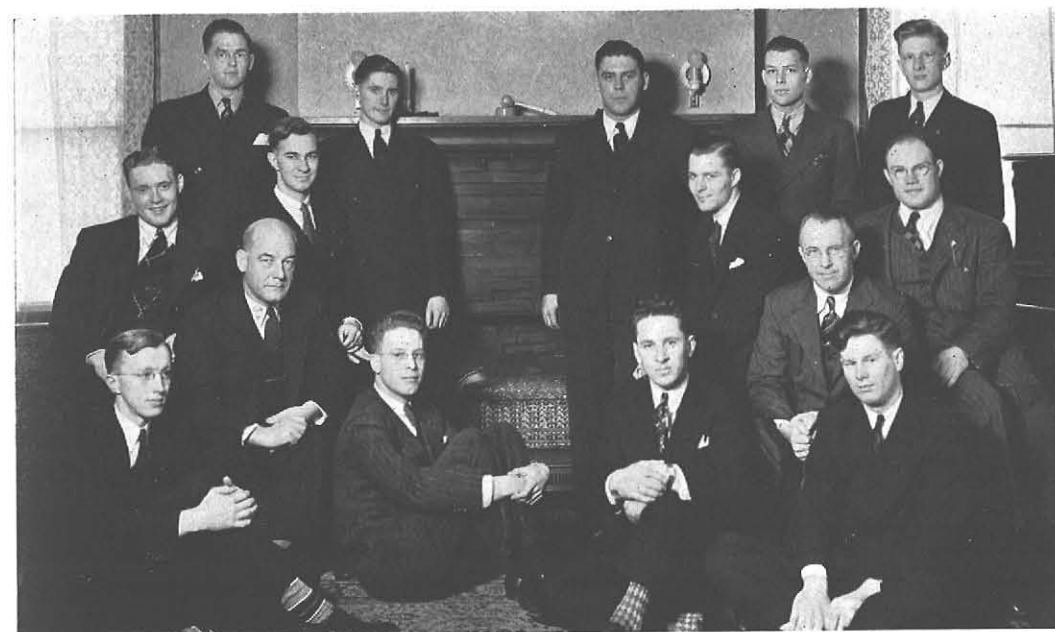
CHARLES BALL	PAUL DAUCHER	LINDSAY FARNAN
HUGH HASLETT	WARREN HELWIG	WILLIAM SION
CHARLES TURCOTT		CHARLES WEIGAND

MEMBERS OF THE CLASS OF '42

RALPH BRIGHTON	BOYD CAMPBELL	CARLTON GERBRACHT
HAROLD GILBERT	PETER LUCAS	KENNETH PHILLIPS
GRANT WETTLAUFER	JOSEPH ZAHM	

FRATRES IN FACULTATE

IRVING C. PERKINS	JOHN FONTANA
GEORGE C. DECKER	GEORGE E. HUCKINS



EPSILON PI TAU

Only the cream of the Industrial College student body is selected for Epsilon Pi Tau membership. Not only must a member be a Junior or Senior in the Industrial Arts Department, but, as a further qualification, he must be in the upper quartile of his classes.

Those who do survive the rigorous requirements are well-suited to pursue the primary purpose of Epsilon Pi Tau in its work to further development and research in the Industrial Arts field.

This national honorary society, the first in New York, seeks to stimulate scholarship, leadership, and professional promise.





GAMMA MU CHAPTER

KAPPA DELTA PI

OFFICERS

<i>President</i>	DAVID O. COOKE
<i>Vice-President</i>	BETTY SCHREINER
<i>Recording Secretary</i>	MARGUERITE REINHARD
<i>Corresponding Secretary</i>	MARIAN SONTHEIM
<i>Treasurer</i>	ANNE GOULD

MEMBERS OF THE CLASS OF '41

ALBERTA BROWN	FRANCES CAROTHERS	ARTHUR CARR
DAVID O. COOKE	RICHARD COUGHLIN	BERNICE FRANKS
ANNE GOULD	GRACE HIMMELE	WINIFRED JENNER
JEAN MAYER	BEATRICE MINKEL	ROBERT PECK
MARGUERITE REINHARD	BETTY SCHREINER	AARON SIMON
BETTY JANE SMITH	MARIAN SONTHEIM	JOAN TARRANT
MARY TAYLOR		FRANCES WEISSMAN

MEMBERS OF THE CLASS OF '42

MARIA CORSI	JEANNE McMAHON	EARL OBERMEYER
MARION PIERCE	BARBARA RUDOLPH	RUTH VIOX
	ESTHER WEINSTEIN	

FRATRES IN FACULTATE

SHERMAN G. CRAYTON	REUBEN S. EBERT	D. KENNETH WINEBRENNER
CAROLINE K. GORDNIER	DANIEL GROSSMAN	ANNA M. GEMMILL
STELLA O'REILLY	CHESTER A. PUGSLEY	IRENE HIRSCH
PAUL W. SLOAN	MARGUERITE STOCKBERGER	MARGARET S. QUAYLE
MILDRED L. SIPP		KATE V. WOFFORD

HONORARY MEMBERS

RALPH HORN	IRVING C. PERKINS	CATHERINE E. REED
HARRY W. ROCKWELL	CHARLES C. ROOT	



KAPPA DELTA PI

The "upper crust" comprises the membership of the Gamma Mu Chapter of Kappa Delta Pi. Membership is limited to only those Juniors and Seniors who attain high scholastic standing and who show an interest in the advancement of education.

Kappa Delta Pi takes care of the Dean's Tea which is an annual affair given for all the students who make the Dean's list.





NU LAMBDA SIGMA

OFFICERS

<i>President</i>	LUCILLE BEARDSLEY
<i>Vice-President</i>	JEANNE PIPER
<i>Treasurer</i>	ESTHER HOAG
<i>Recording Secretary</i>	RUTH MILLER
<i>Corresponding Secretary</i>	JEANNE MANNEAR

MEMBERS OF THE CLASS OF '41

THELMA ABEL	EVA BALDWIN	LUCILLE BEARDSLEY
JOYCE BROWN	VERA BURCKLEY	KAY CZERNIEJEWSKI
BERTHA DEMBOWSKI	MARGARET ESCHNER	JANE EVANS
MARY GRAHAM	NORMA GRESSELL	GRACE HIMMELE
WINIFRED JENNER	RUTH KRIEMAN	KATHLEEN LAPPIN
EDITH MARTIN	BEATRICE MINKEL	JEANNE PIPER
JOAN TARRANT	MARY TAYLOR	RUTH TRAVIS
	JEAN VEDDER	

MEMBERS OF THE CLASS OF '42

SARAH BARNES	CAROL FRAZEE	VERN HECK
ESTHER HOAG	JEANNE MANNEAR	RUTH MILLER
RUTH OWEN	MARJORIE PHILLIPS	ESTHER WEINSTEIN

SORORES IN FACULTATE

FRANCES G. HEFINSTALL	EILEEN MULHOLLAND
-----------------------	-------------------



NU LAMBDA SIGMA

Active on campus for the last sixteen years, Nu Lambda Sigma, honorary literary sorority, encourages in its members a genuine interest in reading. Each year the organization investigates a specific phase or type of literature. New members are chosen from honor students in the composition courses, and those showing unusual literary interest.





MU CHAPTER

PHI Upsilon Omicron

OFFICERS

<i>President</i>	BERNICE FRANKS
<i>Vice-President</i>	BETTY SCHREINER
<i>Secretary</i>	ELEANOR KAY BRANT
<i>Treasurer</i>	FRANCES CAROTHERS
<i>Chaplain</i>	ELEANOR WILLIAMS
<i>Historian and Librarian</i>	RUTH ALBRIGHT
<i>Editor</i>	ELLEN HIRSEMAN

MEMBERS OF THE CLASS OF '41

RUTH ALBRIGHT	ELEANOR KAY BRANT	FRANCES CAROTHERS
BERNICE FRANKS	ANNE GOULD	MARJORIE HAFFA
MARY HUSSEY	HELEN JOHNSON	MURIEL LEVER
JEAN MAYER	RUTH NOBLE	BETTY SCHREINER
	ELEANOR WILLIAMS	

MEMBERS OF THE CLASS OF '42

MURIEL FRENCH	ELLEN HIRSEMAN	MARY LUTZ
MARJORIE PEIRCE	EUDENE SCHENCK	MADELINE YUELLS

SORES IN FACULTATE

FAYE KEEVER	ESTHER MCGINNIS	MARTHA S. PRATT
ALMA R. ROUDEBUSH	ESTHER F. SEGNER	MILDRED L. SIPP

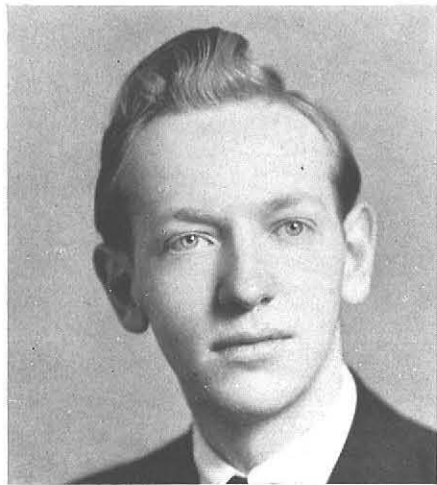


Phi Upsilon Omicron

There's an old saying, "When cooks get together, they talk shop." Not so, however, with Phi Upsilon Omicron, National Honorary Fraternity of the Home Economics Department. Instead, the organization seeks to establish and strengthen bonds of friendship, promote the moral and intellectual development of its members as well as to advance Home Economics.

The Mu Chapter was established on this Campus in 1924 and from that time on has been active in school life. Besides helping to maintain the Bureau of Instructional Materials, Mu Chapter contributes to the national professional work of consumer education. Then, too, Mu Chapter has social tendencies, which it exercises by entertaining the Freshmen each year.





SIGMA UPSILON

OFFICERS

President	GERALD E. CLARKE
Vice-President	RALPH L. SMITH
Treasurer	GLENN MORRISON
Secretary	BERNARD ROSTAD
Debate Manager	DAVID O. COOKE

MEMBERS OF THE CLASS OF '41

HAROLD BEAL	DAVID COOKE	RICHARD COUGHLIN
DAVID COWNIE	DONALD DONLEY	WILLIAM EXTON
MILTON GURVITZ	ROBERT GRIFFIN	TYRIL MCCOY
CHARLES MCCARTHY	GLENN MORRISON	ROBERT PECK
MORRIS RAIKEN	AARON SIMON	THOMAS SMITH
	JAMES SWEET	

MEMBERS OF THE CLASS OF '42

WILLIAM CALLAN	BOYD CAMPBELL	GERALD CLARKE
IRVING COHEN	MURDOCK CUNNINGHAM	ROBERT MARKS
ROLAND MURPHY	BERNARD ROSTAD	RALPH SMITH

MEMBERS OF THE CLASS OF '43

HOWARD BAEUMLER	EDWARD GREENE	DONALD JOSEPH
GOMER LESCH	DONALD VOLTZ	

FRATRES IN FACULTATE

ANDREW W. GRABAU	CHARLES A. MESSNER	CHARLES C. ROOT
HAROLD F. PETERSON	PAUL W. SLOAN	JOHN M. THURBER



Sigma Upsilon

Sigma Upsilon is a National Honorary Literary Fraternity. Alpha Delta Chapter was founded at State in 1931, the first teachers college chapter to be chartered.

Meeting at Dr. Thurber's home, the group this year spent many a Wednesday night discussing poetry, English in the public schools, drama as literature, and personal experiences with literature.

A highlight of Sigma U's activity this year was the successful sponsoring of a college debate team. Besides entertaining the faculty and students with an unusual and enlivened home debate during an assembly program, this team successfully met such rivals as Niagara University, McMasters University, Canisius College, and Syracuse University.





PAN-HELLENIC

OFFICERS

<i>President</i>	MARY BUECHNER
<i>Recording Secretary</i>	CATHERINE CROCUSTON
<i>Corresponding Secretary</i>	MARY JANE OELKERS
<i>Treasurer</i>	JEAN MAYER
<i>Faculty Advisor</i>	MARGARET S. QUAYLE

MEMBERS

<i>Alpha Sigma Alpha</i> NORMA WILLIAMS	JEAN MAYER	MADLINE YUELLS
<i>Alpha Sigma Tau</i> MARJORIE PEIRCE	CATHERINE CROCUSTON	ESTHER YACKUBOSKIE
<i>Delta Sigma Epsilon</i> NORMA KRAUSE	MARY JANE OELKERS	LOIS JOHNSTON
<i>Pi Delta Theta</i> MAY STRIPP	MARY SCOTT	RITA HOLLANDS
<i>Pi Kappa Sigma</i> JEAN PADGINTON	MARY BUECHNER	EDITH HEFFELFINGER
<i>Sigma Sigma Sigma</i> WINIFRED JENNER	MARGARET McCULLOR	PATIENCE ELSTON
<i>Theta Sigma Upsilon</i> MURIEL LEVER	RUTH KRIEMAN	DOROTHY THOMAS



Pan-Hellenic

The Greeks had their central governing body, so State's sororities have theirs—Pan-Hellenic. As the name implies, this organization embraces all the social sororities on campus.

This year, Pan-Hellenic has aimed to help non-sorority girls understand more fully the privileges and joys offered by membership in a sorority. Since freshmen were ruled eligible to be rushed in the spring, Pan-Hellenic invited all freshman girls to a party in the gym. Games, box lunches, and intimate discussion groups made the party a complete success.

Nineteen forty-one saw a new and different Pan-Hellenic day. For the first time, the dinner and dance were held off campus, at the Hotel Buffalo. A record crowd of one hundred seventy-five girls attended.





ALPHA SIGMA ALPHA



PI PI CHAPTER

OFFICERS

President	NORMA WILLIAMS
Vice-President	CAROL FRAZEE
Secretary	RUTH ALBRIGHT
Treasurer	ELEANOR KAY BRANT
Editor	RAMONA BARNES
Chaplain	RUBY FITCH
Registrar	ELEANOR THOM

MEMBERS OF THE CLASS OF '41

RUTH ALBRIGHT	RAMONA BARNES	MIRIAM BEUTHER
ELEANOR KAY BRANT	VIRGINIA COHO	MARJORIE DUTHIE
MARY DWYER	GERALDINE HARMON	MARY HUSSEY
JEAN MAYER	JUNE PERRY	MARGUERITE REINHARD
JANE WANTHOUSE	BETTY JEAN WILLIAMS	ELEANOR WILLIAMS
	NORMA WILLIAMS	

MEMBERS OF THE CLASS OF '42

RUBY FITCH	CAROL FRAZEE	ESTHER HOAG
JEAN KLEPPMAN	MARY LUTZ	NORMA MUNGER
JOAN RICK	EUDENE SCHENCK	LUCILLE SWICK
ELEANOR THOM	MADLINE YUELLS	

MEMBERS OF THE CLASS OF '43

MARGERY BENNETT	MARGARET BROWN	MARJORIE FRISBEE
EDITH GAUPP	WINNIFRED KENDALL	MARIAN MOLLNOW
OLGA PARENTI	ROSEMARY RATHMAN	AMY SMITH
JANET STOWELL		NATALIE WILLIAMS

SORORES IN FACULTATE

CAROLYN W. HEYMAN	ROSAMOND O. ABATE
-------------------	-------------------



Alpha Sigma Alpha

Romance will never die at State, or at least not as long as Alpha Sigma Alpha continues to present love-seats to the College on Moving-Up Day. This year's gift is the third to be added to the quadrangle.

Although Alpha Sigma Alpha made the college see red, don't yell "Communist." Red only characterized the very effective Fireman's Ball, which it sponsored in the fall.





ALPHA SIGMA TAU



SIGMA CHAPTER

OFFICERS

President	MARJORIE PEIRCE
Vice-President	RUTH FOSTER
Recording Secretary	GRETCHEN KAUTZ
Corresponding Secretary	KATHLEEN GOODMAN
Treasurer	FRANCES KRAINZ
Chaplain	EUNICE TEPAS
Historian	GEORGIA FRESE

MEMBERS OF THE CLASS OF '41

CATHERINE CROCUSTON	RUTH FOSTER	GRETCHEN KAUTZ
FRANCES KRAINZ	JEAN ROBINSON	MARIAN SONTHEIM

MEMBERS OF THE CLASS OF '42

LAURA MAE EHMAN	GEORGIA FRESE	KATHLEEN GOODMAN
RUTH OCHS	MARJORIE PEIRCE	EUNICE TEPAS
DORIS WATERWORTH		ESTHER YACKUBOSKIE

MEMBERS OF THE CLASS OF '43

HELEN BROOKS	FRANCES PIWOWARCYK
--------------	--------------------

SORORES IN FACULTATE

MARGARET S. QUAYLE



Alpha Sigma Tau

The fragrance of red roses transformed the bustling Student Center into an avenue of romance when Alpha Sigma Tau, second oldest sorority on campus, held its annual flower sale. In March, the sorority held Skyline Scampers in the gym. Immediately after exams comes the annual house-party at Lime Lake where it is easy to drown, among other things, one's sorrows. Again this year a scholarship award of one hundred dollars was presented to a deserving non-sorority girl. The identity of the recipient is kept a secret from all but the deciding committee.





DELTA SIGMA EPSILON



ARETHUSA UPSILON CHAPTER

OFFICERS

President	NORMA KRAUSE
Vice-President	BERYL CRAIG
Treasurer	EMILY MAE BUTLER
Recording Secretary	LILLIAN BUDDENHAGEN
Corresponding Secretary	MARY GRAHAM
Chaplain	BETH GOODFELLOW
Sergeant	MURIEL HOLMES
Historian	ELIZABETH PELL

MEMBERS OF THE CLASS OF '41

EDICE ANDERSON	LILLIAN BUDDENHAGEN	EMILY MAE BUTLER
BERYL CRAIG	BERTHA DEMBOWSKI	MELROSE FRANKLIN
MARY GRAHAM	MURIEL HOLMES	NORMA KRAUSE
ELIZABETH MAUL	MARGARET McDONOUGH	MARY JANE OELKERS
ELIZABETH PELL	BETTY SCHLOTZER	BETTY ANN SEIBERT
VIRGINIA SHANAHAN	JEAN TILLOU	MARY GERTRUDE VIVERETTE

MEMBERS OF THE CLASS OF '42

BETH GOODFELLOW	LOIS JOHNSTON	BEVERLY JUNE
	EVELYN WALTERS	

MEMBERS OF THE CLASS OF '43

JEAN DALY	ANNA BELLE FITZGERALD	ARLINE FRANK
HELEN GILDERSLEEVE	MARJORIE HUETTER	SYBIL HUTCHINSON
MARGARET MARY WOEPPEL		BETTY YOUNGBERG

PLEDGES

ELIZABETH DELANEY	JEAN HAMMERSMITH	MARGARET MCGOVERN
JEAN REEVES	MARGARET RUSSELL	NANCY LEE SMITH

SORORES IN FACULTATE

MARGARET A. GRANT	RUTH PALMER	MILDRED L. SIPP
-------------------	-------------	-----------------



Delta Sigma Epsilon

Delta Sig, having completed the furnishing of its green and rust sorority room, held meetings and entertained there this year. When Delta Sigs held the annual cookie sale in February, for an entire day the whole college, students and faculty included, went about munching cookies. The girls honored their mothers this year, as every year, at a Mothers' Day tea. In addition to a magazine subscription which the sorority presents annually to the library, it awards the Bishop Honor Medal to the senior girl who has participated most effectively in student life.





PI DELTA THETA



ZETA CHAPTER

OFFICERS

<i>President</i>	MAY STRIPP
<i>Vice-President</i>	MARGARETTE TOLMSA
<i>Alumni Chairman</i>	JANE EVANS
<i>Secretary</i>	FRANCES ALBERTS
<i>Treasurer</i>	RITA HOLLANDS
<i>Registrar</i>	EVELYN FRIEDL
<i>Editor</i>	JANE EVANS
<i>Chaplain</i>	JANET LEWIS

MEMBERS OF THE CLASS OF '41

FRANCES ALBERTS	JANE EVANS	MARY SCOTT
	MAY STRIPP	

MEMBERS OF THE CLASS OF '42

RITA HOLLANDS	KATHLEEN LINK	MARGARETTE TOLMSA
---------------	---------------	-------------------

MEMBERS OF THE CLASS OF '43

EVELYN FRIEDL	BETTY HUBBARD	JANET LEWIS
---------------	---------------	-------------

SORORES IN FACULTATE

ALBEN B. ACKERMAN	ELEANOR M. GOVER	IRENE HIRSCH
	MAY D. ROOT	



Pi Delta Theta

Early in the fall Pi Deltas got together with Theta Sigs in the college gym to swing a Melody Lane, complete with grace notes and smooth syncopation. On Founders Day in February the girls celebrated with a banquet at which they entertained their mothers as honored guests. As a herald to sweet summertime, Pi Deltas, on May 1, sold flowers from their Student Center garden.





PI KAPPA SIGMA



RHO CHAPTER

OFFICERS

<i>President</i>	JEANNE PADGINTON
<i>Vice-President</i>	RUTH BLACKER
<i>Recording Secretary</i>	HELEN KOWALSKI
<i>Corresponding Secretary</i>	PHYLLIS KENYON
<i>Treasurer</i>	HELEN JOHNSON
<i>Sergeant-at-Arms</i>	ELAINE COLE
<i>Keeper-of-the-Archives</i>	EDITH HEFFELFINGER
<i>Editor</i>	HELEN JOHNSON

MEMBERS OF THE CLASS OF '41

MARY BUECHNER	ELAINE COLE	HELEN JOHNSON
PHYLLIS KENYON	HELEN KOWALSKI	HELEN MERENA
MARJORIE ROSE		

MEMBERS OF THE CLASS OF '42

SHIRLEY ADAMS	RUTH BLACKER	RUTH HUPPUGH
EDITH HEFFELFINGER	JEANNE PADGINTON	THERESA PETRAS

MEMBER OF THE CLASS OF '43

SONJA HUGO

PLEDGES

HELEN AGLE	FLORENCE COGHILL	JEAN GORDON
EILEEN HEALY	ELEANOR MINTRUM	JUNE ROST

SORORES IN FACULTATE

MARY FONTANA	HERTHA S. GANEY	ESTHER MCGINNIS
--------------	-----------------	-----------------



Pi Kappa Sigma

Pi Kaps became very domestic this year, producing dresses, bonnets and mittens of pale blue corduroy, embroidered with the Greek sorority emblems. On one day the sorority filled the Student Center with culinary lusciousness in the form of apple suckers for the traditional sale. Romance was encouraged on another occasion when gardenias were sold to the romantically inclined by Pi Kap cupids.

"Starlight, Starbright,

Let's all have fun tonite," was the theme of this year's campus dance sponsored by the girls.





SIGMA SIGMA SIGMA



ZETA CHAPTER

OFFICERS

<i>President</i>	WINIFRED JENNER
<i>Vice-President</i>	LOIS KROENIG
<i>Corresponding Secretary</i>	MARION PIERCE
<i>Recording Secretary</i>	MARION PRICE
<i>Keeper of Grades</i>	MARGARET McCULLOR
<i>Treasurer</i>	A. MARIE BARKER

MEMBERS OF THE CLASS OF '41

MARIE BARKER	MARGARET ESCHNER	WINIFRED JENNER
MURIEL KIEFFER	MARZETTA LATHAM	MARIE MAHL
MARGARET McCULLOR	BEATRICE MINKEL	MARION PRICE

MEMBERS OF THE CLASS OF '42

ONNALEE BEL	HELEN BOLTON	PATIENCE ELSTON
LOIS KROENIG	RUTH MILLER	DOROTHY NICHOLS
JANE NORTH	MARION PIERCE	

MEMBERS OF THE CLASS OF '43

VIRGINIA BOYD	MARY DOLAN	HARRIETTE EBBLIE
JOYCE FLAMMANG	WILLENA HENRY	GWENDOLYN JONES
BETTY KING	LEILA KING	MARGUERITE SHEA

PLEDGES

MARION BARTOW	MARY BISTOFF	JEANNE KLOCKE
DOROTHY MAHL	EILEEN QUINN	RUTH STERLING

SORORES IN FACULTATE

ETHEL M. HANSEN	THERESA A. ROEHSLER
-----------------	---------------------



Sigma Sigma Sigma

Sigma Sigma Sigma has the distinction of being the oldest national sorority on campus. Tri-Sig, as it is better known, established the Zeta Chapter in 1911. As befitting such a distinguished sorority, the members actively participated in the Red Cross "Bundles for Britain" campaign. Another feature of a busy year was the presentation of the Upton Memorial Scholarship to a deserving junior.





THETA SIGMA UPSILON



THETA CHAPTER

OFFICERS

<i>President</i>	MURIEL LEVER
<i>Vice-President</i>	ALICE CHMURA
<i>Secretary</i>	OLIVE NICHOLS	
<i>Treasurer</i>	HILDRED MULLER	

MEMBERS OF THE CLASS OF '41

BETTY BROWN	EVELYN CAGE	ALICE CHMURA
MERIBETH DUNCKEL	RUTH KRIEMAN	MURIEL LEVER
HILDRED MULLER	OLIVE NICHOLS	

MEMBER OF THE CLASS OF '42

DOROTHY THOMAS

MEMBER OF THE CLASS OF '43

DORIS HARRISON

PLEDGES

ESTHER DUDZIAK MARY GUILD

SORORES IN FACULTATE

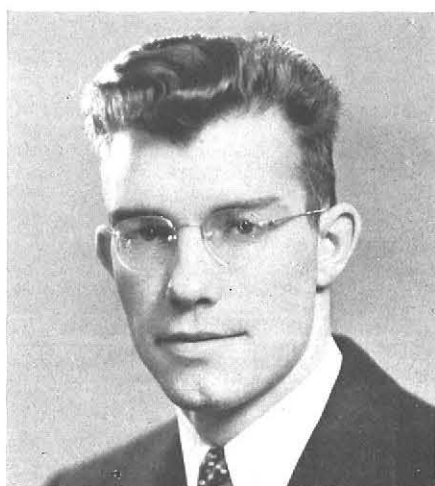
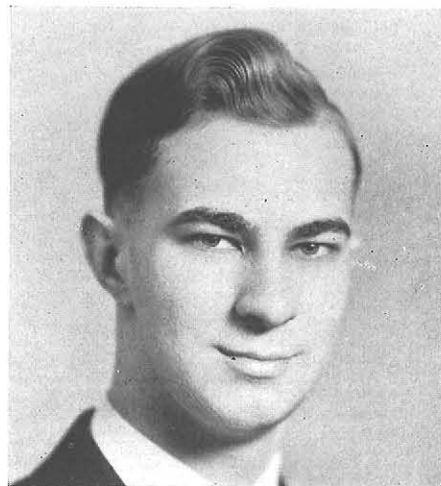
MARGARET DUPRE	ARLINE JOHNSON	ALMA R. ROUDEBUSH
----------------	----------------	-------------------



Theta Sigma Upsilon

Rose and silver conjure the picture of warmth blended with refinement, but to the Theta Chapter of Theta Sigma Upsilon those colors symbolize, in addition, the sorority's challenge to its members of loyalty and sterling qualities of mind and heart. Thus, it was only natural for Theta Sigma Upsilon to sponsor the Courtesy Day Tea in honor of the faculty and the other sororities on the campus.





ALPHA CHAPTER

DELTA KAPPA

First Semester

HAROLD GILBERT
 VERNON STRUB
 ROBERT ISENBERG
 GLENDON SEAMAN
 STEPHEN HARRISON
 CHARLES BALL
 HUGH HASLETT
 GEORGE M. PAGAN

OFFICE

President
 Vice-President
 Corresponding Secretary
 Recording Secretary
 Treasurer
 Chaplain
 Sergeant-at-arms
 House Manager

Second Semester

ROBERT ISENBERG
 CHARLES BALL
 CARLTON GERBRACHT
 RICHARD TEMLITZ
 WERNER ROGERS
 IRWIN KARCHMER
 RICHARD VROOMAN
 GEORGE M. PAGAN

MEMBERS

CLASS OF '41

CHARLES BALL
 PAUL DAUCHER
 IRVING FUHRMANN
 HUGH HASLETT
 CLAYTON KAMINSKA
 PATRICK PINTO
 WILLIAM SION
 ANGELO SUOZZI

HAROLD BEAL
 ANTHONY DeSCIPIO
 WILLIAM GLASGOW
 WARREN HELWIG
 GEORGE KUHN
 ROBERT POTTER
 SEYMOUR SOMMERS
 CHARLES TURCOTT

DAVID CAPPIELLO
 LINDSAY FARNAN
 STEPHEN HARRISON
 ROBERT ISENBERG
 JOHN LESLIE
 GLENDON SEAMAN
 VERNON STRUB
 CHARLES WEIGAND

CLASS OF '42

RALPH BRIGHTON
 IRVING COHEN
 HAROLD GILBERT
 JOHN A. MATTISON
 KENNETH PHILLIPS
 RICHARD TEMLITZ

BOYD CAMPBELL
 THOMAS DAVIS
 JOSEPH HAPPY
 EARL OBERMEYER
 HENRY STACHOWICZ
 RICHARD VROOMAN
 LEONARD WIELOPOLSKI

JOHN CHIVARO
 CARLTON GERBRACHT
 PETER LUCAS
 GEORGE M. PAGAN
 RICHARD SWART
 GRANT WETTLAUER

CLASS OF '43

JOHN ARMSTRONG
 EDWARD HELWIG
 GEORGE PIEPER

WALDEMAR BOHM
 IRWIN KARCHMER

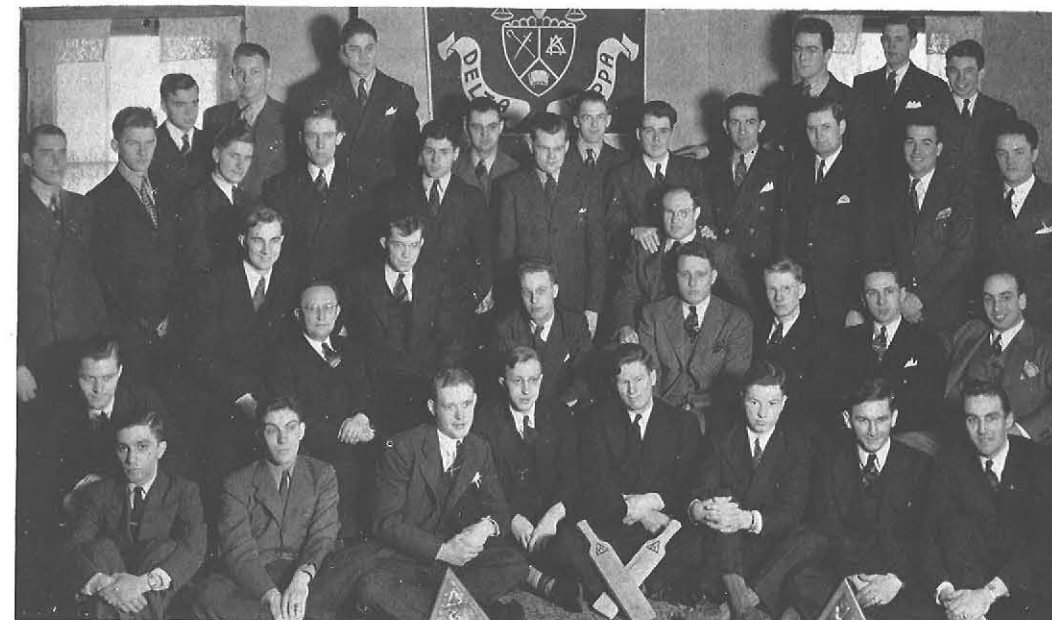
CORNELIUS CANAVAN
 DONALD KUHN
 WERNER ROGERS

FRATRES IN FACULTATE

HOMER A. BRUCE
 RAYMOND M. FRETZ

HAROLD C. CRAIN
 JOHN FONTANA

STANLEY A. CZURLES
 EDWARD L. MORRICE

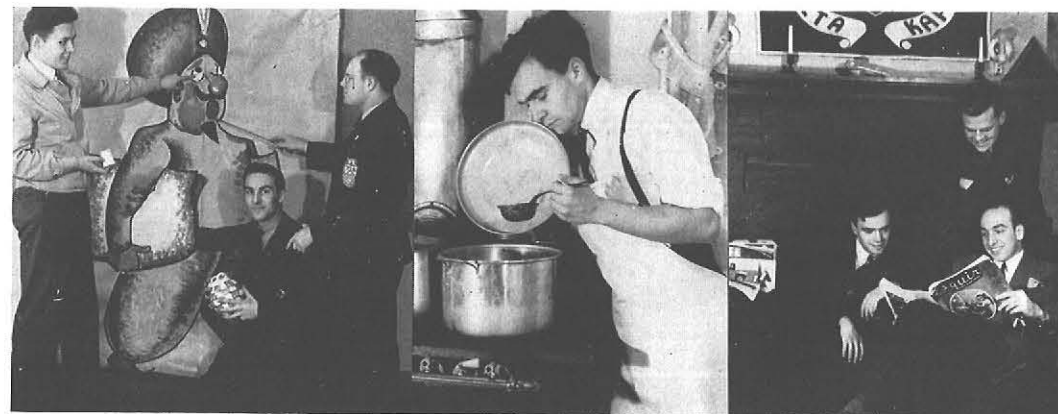


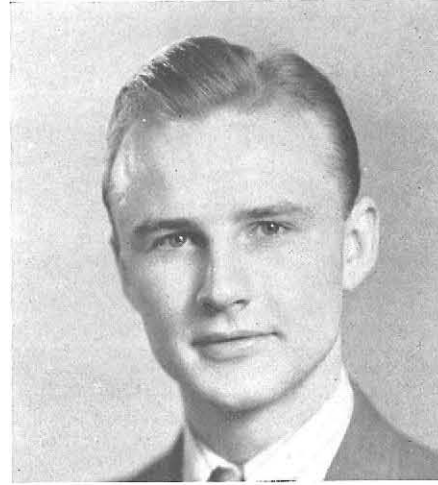
Delta Kappa

Delta Kappa officially has a roof over its head now. After months of continued labor by fraternity members, the rambling cottage on Richmond Avenue formally materialized into Delta Kappa headquarters at a student-faculty housewarming party held last fall.

State's Alpha Chapter played host to a state-wide convocation of Delta Kappa fraternities at its new lodging.

In addition to presenting the Delta Kappa Scholastic and Athletic awards, and to providing a very complete social calendar, Delta Kappa again published their indispensable "little black notebook," the Student Directory.





BETA CHAPTER
PSI PHI

<i>First Semester</i>	OFFICE	<i>Second Semester</i>
ROBERT J. GRIFFIN	President	DAVID L. COWNIE
ROLAND MURPHY	Vice-President	GEORGE KIRCH
MARVIN TRUDELL	Treasurer	ROBERT J. GRIFFIN
DAVID L. COWNIE	Financial Secretary	MARVIN TRUDELL
DANIEL O'DONNELL	Recording Secretary	DANIEL O'DONNELL
WILLIAM TRAUTMAN	Corresponding Secretary	WILLIAM EXTON
DAVID O. COOKE	Chaplain	DAVID O. COOKE

MEMBERS

GEORGE COCHERN
WILLIAM EXTON
CHARLES MCCARTHY

CLASS OF '41

DAVID COOKE
ROBERT GRIFFIN

DONALD DONLEY
GEORGE KIRCH
JOSEPH WITKA

CLASS OF '42

ROBERT MARKS

ROLAND MURPHY
BERNARD ROSTAD

CLASS OF '43

ALEX LORINCZ
ROY REED
ROBERT SCHULTZ
GILBERT TAUFFNER
DONALD VOLTZ

DANIEL O'DONNELL
STANLEY SACHA
EVERETT STEVENSON
WILLIAM TRAUTMANN
FRANCIS WANDELL

FRATRES IN FACULTATE

HUBERT E. COYER
RALPH HORN

ROBERT O. DEMOND

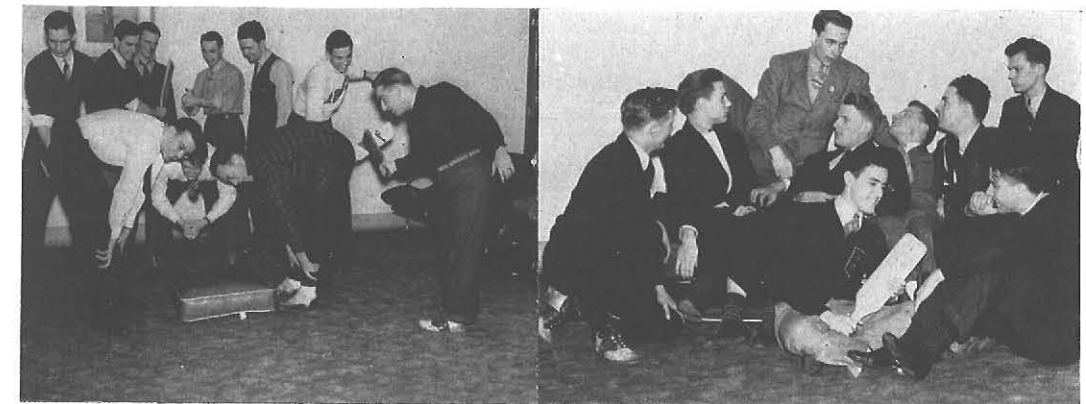
REUBEN S. EBERT
GEORGE M. QUACKENBUSH

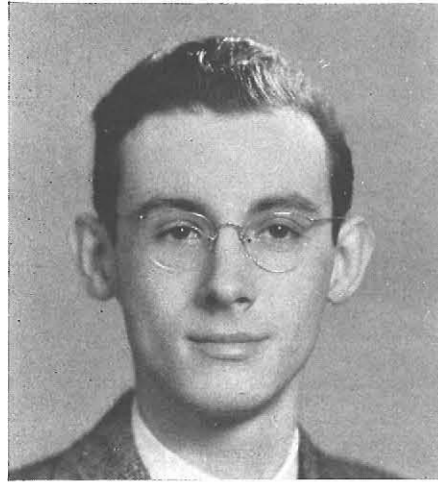


Psi Phi

Psi Phi fraternity has as many faces as the tower clock. In 1930 it presented one face of the tower clock to the new College building, and has since taken the responsibility of taking care of all the clock's faces.

Each year the Beta Chapter of Psi Phi fraternity compiles and distributes athletic schedules, sponsors a "jinx-burning" before the Cortland game, and contributes to the social life of the college by offering noon-hour dancing. The annual dance, last of an exciting campus season, was the informal success of the year.





RHO CHAPTER

SIGMA TAU GAMMA

<i>First Semester</i>	OFFICE	<i>Second Semester</i>
ROBERT PECK	President	ALBERT D. CLARKE
HENRY NAWOTKA	Vice-President	ROLLIN G. VOGAN
HAROLD ROSENBAUM	Corresponding Secretary	JAMES A. SWEET
LEON GRABER	Saga Reporter	HAROLD ROSENBAUM
JOSEPH ROMANO	Secretary	SOL ELFENBEIN
ARTHUR C. CARR	Treasurer	EDWARD RECKE

MEMBERS

ARTHUR C. CARR
 JOHN KRYLO
 ROBERT F. PECK
 JAMES SWEET

CLASS OF '41
 NORMAN GALEMBO
 HOWARD McCULLOUGH
 JOSEPH ROMANO
 JOHN WUJEK

CHARLES GREMKE
 ALLEN OWEN
 ROBERT SCHAFER
 EDWARD ZIEGLER

CLASS OF '42
 ELLIOT CARLSON

CLASS OF '43
 ALBERT D. CLARKE
 MAYNARD FELDMAN
 HAROLD ROSENBAUM
 ROLLIN G. VOGAN

ROBERT DIETTER
 HENRY NAWOTKA
 JOHN SCHULER

JACK H. CHARLES
 SOL ELFENBEIN
 EDWARD RECKE

FRATRES IN FACULTATE

ROBERT E. ALBRIGHT
 HARRY C. JOHNSON
 CHARLES A. VAIL

CHARLES B. BRADLEY
 CHESTER A. PUGSLEY
 WALTER B. WEBER

OSCAR E. HERTZBERG
 PAUL W. SLOAN
 D. KENNETH WINEBRENNER



Sigma Tau Gamma

Essential to all Buffalo State social climbers, the Social Calendar is the annual gift of Rho Chapter, Sigma Tau Gamma. For its own members, Sigma Tau strives to foster fellowship among men entering the teaching profession and to help them advance in scholarship and leadership.

In 1933 Rho Chapter became affiliated with the national organization of Sigma Tau Gamma, the oldest National Social Professional Education Fraternity in the country. Annually, this council awards keys to the two outstanding members of its chapters.





THE ELMS

Editor-in-Chief BERTHA DEMBOWSKI
Business Manager RICHARD COUGHLIN

ASSISTANTS:

Associate Editor MILTON GURVITZ
Associate Editor MARJORIE DUTHIE
Art Editor RAYMOND RYBCZYNSKI
Literary Editor GERALD CLARKE
Sports Editor HAROLD BEAL
Features Editor WILLIAM EXTON
Typing Editor SYLVIA LEVIN
College News Editor KATHLEEN MCKENNA

STAFF:

LITERARY

JEAN DALY
 RUTH ROSEN
 JEAN REEVES
 WILLIAM SDAO

ART

KATHERINE COLE
 DOROTHY BLECHSTEIN
 GEORGE COCHERN
 EILEEN FRANKS
 GLORIA RAWLEIGH
 MARGARET MURRAY

FEATURES

MURDOCH CUNNINGHAM
 MARY HUSSEY
 BETTY KING
 EDWARD NELSON

BUSINESS

EUNICE TEPAS
 BARBARA RUDOLPH
 RUTH STEEN
 SOPHIE ORKISZ

COLLEGE NEWS

VIVIENNE MILLER
 PATRICIA O'HERN
 BOYD CAMPBELL

PHOTOGRAPHY

STUART MYERS
 MARY GRAHAM
 ALBERT RYDEYSKI

SPORTS

NANCY LEE SMITH
 CLAIRE CROCKER
 LEONARD LIPSCHITZ
 VIRGINIA COHO

TYPING

HELEN MANDRY
 EILEEN HEALY
 EDNA GORDON



Elms

"Memories of this year at State" is the theme the ELMS staff has tried to develop in this yearbook. How well we have done this is for you to judge. In an informal style we have recalled the events and reproduced personalities which have given this college year its distinctive flavor.

We believe that this "1941 notebook" represents an improvement over the twenty-nine editions of the ELMS which have preceded it. Still leaving to our successors room for improvement, we give our best to the college—a true yearbook, written and compiled by contemporaries as a lasting memory-book of this year on our campus.





HANDBOOK

Nothing, except perhaps an occasional prayer, serves as a greater aid to incoming Freshmen than the Student Handbook. From fatherly advice on the values of study and a map of Buffalo, to the rules governing student probations, the Handbook covers every phase of student activity at State Teachers.

This year, more than ever, the Freshmen studied their Handbooks. This intent was stimulated, in no small manner, by President Rockwell's offer of five dollars to the Freshman who was best versed in the contents of the manual.

For upperclassmen, the Handbook information concerning school traditions, customs and regulations has more than once come to the aid of their faltering memories.

OFFICERS

Editor	ALBERTA HAMISTER
Information and Literary Editor	HELEN BROOKS
Curriculum Editor	BARBARA RUDOLPH
Social Editor	INEZ GRODS
Sports Editor	ANTHONY DESCIPIO
Art Editor	CLIFTON BAINARD
Make-up Editor	CARLTON GERBRACHT

STAFF

EVA BALDWIN	LEONARD LIPSCHITZ	MARGARET MCGOVERN
WILLIAM SDAO		LOUISE SLOCUM



STUDENT COUNCIL

Student Council, the true hub of all school activities, has the essential task of differently coordinating student effort. As an advisory board, the Council serves as a medium to express the recommendations and opinions of the student body on matters of vital interest.

Unity and college spirit, which the Student Council fosters, are its main objectives. With these aims in view, the Council annually sponsors the Christmas Party, the Inter-Class Sing, pep rallies, student assemblies, and the Charity Drive.

The representative membership of the Council includes section captains, class officers and faculty representatives.

OFFICERS

President	DONALD DONLEY
Vice-President	PETER LUCAS
Secretary	EDITH GAUPP
Treasurer	JEAN DALY

FACULTY MEMBERS

Members ex officio: RALPH HORN, RAYMOND M. FRETZ, CATHERINE E. REED, HARRY W. ROCKWELL
 Elected Members: ESTHER MCGINNIS, ALMA ROUDEBUSH, PAUL W. SLOAN, REUBEN S. EBERT



ASSOCIATION FOR CHILDHOOD EDUCATION

"Old books, any books. What have you? What do you want?" was the slogan of the A. C. E. annual Christmas book exchange. The K. P. specialists also featured Santa Claus parties for two nursery schools.

In addition, the members of the organization sent delegates to their Long Island convention, and took part in a panel discussion with the city branch of the organization.



OFFICERS

President	MARY TAYLOR
Vice-President	MARY GRAHAM
Recording Secretary	MARION RICOTTA
Corresponding Secretary	EDITH MARTIN
Treasurer	BETTY JANE SMITH

MEMBERS

SHIRLEY ADAMS	FLORENCE ARMITAGE	MARIE BARKER
MARJORIE BELL	GWEN BELLAMY	VIRGINIA BOYD
HELEN BROOKS	MARGARET BROWN	VERAL CASHMORE
DORIS COFFEY	BERYL CRAIG	PHYLLIS CREED
RITA DeMEO	GERALDINE FALING	KATHLEEN GOODMAN
EDITH HEFFELPINGER	NORMA HUBER	GRETCHEN KAUTZ
RUTH KRIEMAN	LOIS KROENING	JEAN LITTLEPAIR
ELAINE LONGNECKER	AUDREY LYNDS	BEATRICE MACE
EDITH MARTIN	ELEANOR MINTRUM	MARGARET MORTON
RITA MURPHY	KATHERINE NUNLEY	JEANNE PADGINTON
ALICE PEREW	MARJORIE PHILLIPS	MARION RICOTTA
ETHEL ROLL	RITA SAJECKI	HELEN SANDECKI
ESTHER SAUER	HELEN SCHULER	VIRGINIA SHANAHAN
LOUISE SLOCUM	BETTY JANE SMITH	MARION SONTHEIM
BETTY STEGMAN	ALICE STIELOW	MARY JANE SULLIVAN
JOAN TARRANT	MARY TAYLOR	ARLINE THOMPSON
GENEVIEVE TREICHLER	JEAN VEDDER	BETTY WOLF

FACULTY MEMBERS

GRACE A. ALLEN	IRENE HIRSCH	MARY L. DARKER
MARY L. JAMISON	MARTHA G. METZ	THERESA A. ROEHLER
FRANCES M. RUDELL		EDNA M. SHAW

ART EDUCATION CLUB

Going—going—gone! And as the gavel came down, another picture had been sold to the highest bidder in the Annual Art Auction. Student ingenuity is at work every year in this fashion to provide money with which to keep the Art Social Center a place of "beauty and rare comfort."

As a member organization of the Junior Division of the Eastern Arts Association, a professional organization for art teachers, the Art Education Club sent delegates to the annual convention which this year was held at New York.

OFFICERS

President	WILLIAM EXTON
Vice-President	EMILY CONAWAY
Corresponding Secretary	KATHERINE COLE
Recording Secretary	BETTY KING
Treasurer	HELEN GILDERSLEEVE

FACULTY ADVISORS:

CHARLES B. BRADLEY	CAROLINE W. HEYMAN	RUTH M. KARCHER
--------------------	--------------------	-----------------



MEMBERS

ELOISE ADAMS	SARAH ALPIERI	BETTY ANDERT
JACK BANNISTER	MARION BARTOW	ONALEE BEL
ANN BORGMAN	JEWEL BROWN	MARY CLARK
WILLIAM CLYDESDALE	GEORGE COCHERN	KATHERINE COLE
EMILY CONAWAY	BETTY ANN DION	BEATRICE EBLING
WILLIAM EXTON	NORMA FABIAN	GERTRUDE FLEISCHMAN
RUTH FOSTER	EDITH GAUPP	BETTY GERMONY
HELEN GILDERSLEEVE	NORMA GRESSSELL	PHYLLIS GRESS
LORENE GIESLER	CAROL GRISWOLD	GEORGETTA HERL
ROYTHA HUMAN	MARGUERITE IRVING	EVELYN INGHAM
BETTY KING	HARRIET KINGSLEY	ALICE LOHANS
DOROTHY MAHL	HELEN MANDRY	RITA McDONOUGH
HELEN McMASTERS	HELEN MELROSE	MARGARET MURRAY
HERBERT NEWLOVE	AUDREE OUGHTERSON	RUTH OWEN
BETTY PELL	ANTHONY POLLEY	IRBNE PUTNAM
BERNARD ROSTAD	RAYMOND RYBCZYNSKI	ALICE SADROGA
OLGA SHAPER	HELEN SHERWOOD	RUTH STERLING
HELEN TARAYAS	GILBERT TAUFFNER	RUTH THOM
DOROTHY THOMAS	JEAN TUTTLE	FRANCES WEISSMAN
BEATRICE WITTIG		ESTHER YACKUBOSKIE

ART KRAFT KLUB

When each section scurries about seeking an entirely new idea, holding secret meetings, raiding old trunks and garrets for grotesque costumes, Art Kraft Klub is responsible, for it all means that AKK's Stunt-Nite is approaching. But it's worth all the fuss and torture, for besides being one of the most popular nights on campus, it provides a scholarship for some worthy Art frosh.

All posters which are displayed in the college are first checked by the club, likewise all bulletin boards must be O.K.'ed.

Although the membership is limited, it is open to those in all departments of the college who show an interest in "seeking beauty and finding it."

OFFICERS

President	EARL OBERMEYER
Vice-President	PETER LUCAS
Recording Secretary	GERTRUDE BERLIN
Corresponding Secretary	VIRGINIA COHO
Treasurer	RICHARD SWART
Bulletin Board Chairman	MARIE D'AMICO

MEMBERS

GERTRUDE BERLIN	MIRIAM BEUTHER	VIRGINIA COHO
EVA CORCORAN	GEORGE DAILEY	DOROTHEA DEL NERO
BERTHA DEMBOWSKI	MARIE D'AMICO	DONALD DONLEY
SOL ELFENBEIN	EILEEN FRANKS	EDITH GAUPP
JEAN GIPP	WILLIAM GLASGOW	JOSEPH HAFPEY
MARGUERITE IRVING	DORIS LARSEN	JEAN LITTLEFAIR
PETER LUCAS	HELEN McMASTERS	EARL OBERMEYER
ALLEN OWEN	KENNETH PHILLIPS	HILDA LEE STEIN
RICHARD SWART	CHARLES WEIGAND	JOSEPH WITKA
ESTHER YACKUBOSKIE		MADLINE YUELLS

FACULTY MEMBERS

CHARLES B. BRADLEY	STANLEY A. CZURLES	MARY R. FONTANA
MINA S. GOOSSEN	CAROLYN W. HEYMAN	RUTH M. KARCHER
HARRY W. ROCKWELL		D. KENNETH WINEBRENNER



CLASSICAL CLUB

For those who delight in exploring into the literature of the ancients, the Classical Club offers numerous opportunities for such adventures. The club, which is under the guidance of Dr. Messner, is associated with the national organization, the Junior Classical League.



OFFICERS

<i>First Semester</i>		<i>Second Semester</i>
MARIA CORSI First Consul	BETTY DOHN
SANTA GIGLIA Second Consul	GERALDINE DEPIRRO
EDWARD GREENE Quaestor	SANTA GIGLIA
EILEEN HEALY Censor	PATRICIA O'HERN
BETTY DOHN Scribe	RUTH HOUSER

MEMBERS

CELIA ADAMCZAK	ALICE CHMURA	MARIA CORSI
GERALDINE DEPIRRO	BARBARA DERRICK	CATHERINE DEVIZIO
BETTY DOHN	NORMA FABIAN	MARJORIE FELBER
ANNABELLE FITZGERALD	MARY FLECKENSTEIN	SANTA GIGLIA
EDWARD GREENE	RUTH HOUSER	EILEEN HEALY
DOROTHY HEIL	EVELYN HESS	GRACE HIMMEL
WINIFRED JENNER	DONALD JOSEPH	MURIEL KIEFFER
ROSE LOVECCHIO	ROSE LUNGHINO	DOROTHY MICHERDZINSKI
SHIRLEY MOORE	RUTH OCHS	PATRICIA O'HERN
CELINE PACZYNSKA	EVELYN PERENEY	JULIA PETO
INEZ PICKENS	ANGELA PROVENZANO	JANET RIZZONE
AMELIA SALVAGGIO	JEAN THOMPSON	DORIS WATERWORTH

FRENCH CLUB

To the polyglots of Buffalo State, the French Club fills a definite need for an organization that provides a better understanding and appreciation of the language and cultural background of the French people.

In addition to sponsoring an annual French publication, the Club program of activities also provides for the presentation of French drama and guest speakers. Only those students who have at some time studied the French language can be considered for membership of the Les Amateurs de la France.



OFFICERS

President	JOAN TARRANT
Vice-President	MARIE DELLAS
Secretary	MADALENE MARSHALL
Treasurer	ROSE GEORGE
FACULTY ADVISOR	DR. CHARLES A. MESSNER

CONSEIL

MARY DOLAN	MARGARET O'BRIEN	MARTHA RILEY
DAVID SPEAKMAN		RUTH VIOX

MEMBERS

ELIZABETH COLWELL	JEANETTE FADDIOL	RICHARD MELOON
CATHERINE CROUSTON	VIRGINIA GILL	PATRICK O'SULLIVAN
DOROTHY DUBERT	GEORGE HAHN	JEAN PERNER
HELEN ROUDET		MILDRED SHARICK

HOME ECONOMICS CLUB

Ever on the alert to solve problems and needs, the Home Economics Club's chief project this year was knitting and sewing for the Red Cross. The year's first campus dance, a flower-laden, leis-filled Hawaiian hop, was sponsored by the homemaking girls. Open-house Day, a yearly tradition in which the girls cooperated with the boys downstairs, is conducted to acquaint the public with the very many activities of the department.

Since the club is an active chapter of the American Home Economics Association, delegates are sent each year to the national convention.

OFFICERS

President	ELLEN HIRSEMAN
Vice-President	MURIEL LEVER
Secretary	MURIEL FRENCH
Treasurer	HELEN B. AGLE

MEMBERS

HELEN AGLE	JUNE A. BEARSELL	CORRINE BEBBER
ELIZABETH J. BEL	MARGERY BENNETT	JEAN BOWEN
PEARL BREITMAIER	VERA BRODY	ANNE BRUNETTE
JEAN CANNON	FRANCES CAROTHERS	DOROTHY CHAMPLIN
LILLIAN CHIRLIN	RUTH A. CLARK	MILDRED R. COHEN
DORIS CONKLIN	JENNIE V. CRANSTON	BARBARA CURRY
JEAN DALY	JEANNE DEFFGE	MILDRED DRAGON
LAURA MAE EHMAN	PRISCILLA FAIRBANK	JUNE FERNAAYS
BERNICE FRANKS	MURIEL FRENCH	VIRGINIA FULLER
JEAN GORDON	MARJORIE HAFFA	MARGARET HAMMOND
MARCELLE HAMSHIRE	DORIS HARRISON	ETHEL HELLEMS
GERTRUDE E. HEMSTREET	ELLEN HIRSEMAN	SONJA HUGO
WINNIFRED KENDALL	SHIRLEY H. KOHAN	MURIEL LEVER
OLIVE LIGHTFOOT	INEZ LIVERMORE	SARAH MANNING
PAULINE MARTIN	E. JEAN MAXWELL	LYDIA MENGES
MARIAN MILITELLO	VIVIENNE E. MILLER	MARIAN V. MOLLNOW
GRACE MORRISSEY	MARY O'TOOLE	ANN E. REED
JEAN RODWELL	JUNE M. ROST	MARGARET RUSSELL
THERESA SCALIA	RUTH SCHAERTEL	EUDENE SCHENCK
BETTY SCHLOTZER	ELEANOR SPEER	MARY STENDEL
RUTH DEDRICK TABER	MARGARET MARY WOEPPEL	MARJORIE WOODRUFF
HELEN K. YIANILOS	MADLEINE YUELS	BETTY R. YOUNGBERG





DRAMATIC CLUB

OFFICERS

President	RALPH SMITH
Vice-President	SARAH BARNES
Secretary	MAY POLAKOV
Treasurer	VERN HECK
Program Director	GERTRUDE BERLIN
FACULTY ADVISOR	MINA S. GOOSSEN

MEMBERS

SALLY BARNES
 OLIVE BELLAMY
 HELEN BROOKS
 GERALD E. CLARKE
 BETTY ANNE DION
 NORMA FABIAN
 BETTY GLASS
 ANNE HAGGERTY
 GEORGETTA HERL
 ARLENE JEROLDS
 VICTORIA LAUER
 KATHLEEN JANE LINK
 VIVIENNE MILLER
 CLAIRE O'BRIAN
 IRENE M. PUTNAM
 JOAN RICK
 BARBARA RUDOLPH
 HILDA LEE STEIN
 LOIS TUKEY
 GEORGE WEINHEIMER

PEARL BREITMAIER
 GERTRUDE BERLIN
 RUTH CLARK
 MILDRED R. COHEN
 MILDRED E. DRAGON
 RUBY FITCH
 MARY GREANOFF
 GEORGE HAHN
 BETTY HIEMENZ
 MADELYN KEEVERS
 JAMES LAZARONY
 ROSARIA LO VECCHIO
 JEAN MITCHELL
 ELEANOR OSTRANDER
 ANN REED
 RUTH ANNE ROSEN
 OLGA SHAPER
 ETHELREDA SWIERAT
 RUTH VAN WIE

BETTY BEL
 ANN MARIE BORGMANN
 MARY CLARK
 HARRISON J. COLBURNE
 NATALIE ELDER
 G. ARLINE FRANK
 PHYLLIS LOUISE GRESS
 VERN HECK
 SONJA M. HUGO
 SHIRLEY LACK
 SYLVIA BRENDA LIEBER
 HELEN C. McMASTERS
 NORMA MUNGER
 MAY POLAKOV
 JEAN REEVES
 JUNE M. ROST
 DAVID SPEAKMAN
 ELEANOR THOM
 RUTH G. VIOX
 DOROTHY WINCHESTER



The glimmer of stage lights and the thrill of greasepaint! Ah, how well State Thespians yield to its glamour. Shakespeare was certainly right when he said, "All the world's a stage, and all the men and women merely players" Fascinating and interesting, the art of acting lures one, forever pulling with the force of a magnet at intellect, instinct and the emotions.

As an assembly program, the Dramatic Club presented such hits as "Why I Am a Bachelor" and "Command Performance." At Christmas, capacity audiences thrilled to the traditional Nativity Play, "Bethlehem," by A. E. Houseman. During the year several one-act plays were produced by student directors at the College, at churches, and for banquets. Then under the direction of Miss Mina Goossen, the spring play, "Arms and the Man," by George Bernard Shaw, was presented. Exceptionally well done, it was the highlight of a successful season.

Back of the drops, behind the bright footlights was glamour and thrills of a different kind. There, the mechanical portion of the Dramatic Club worked with nimble and dextrous fingers on lighting, costuming, make-up and advertising. There, the talents of students of all departments found an outlet.

Dating back to the Normal School, the Dramatic Club has been an integral part of college life. The meetings have presented an opportunity for all members to contribute to discussions of current plays and books; to meet authorities on drama and the theater; to learn interesting information concerning acting and the theater.



NEWMAN CLUB



JOAN HAGERTY
DAN O'DONNELL
JEANNE McMAHON
DONALD VOLTZ
HELEN KELLEY
FATHER DEMPSEY
EILEEN MULHOLLAND

President
Vice-President
Treasurer
Secretary
Moderator
Faculty Advisor

DONALD VOLTZ
CORA PAVONE
ALEX LORINCZ
DOROTHY HEIL
HELEN KELLEY
FATHER DEMPSEY
EILEEN MULHOLLAND

MEMBERS

CELIA ADAMCZAK, AGNES ALVAREZ, ROSARIA BALLING, ELIZABETH BARUCH, AGNES BASHER, BETTE BELLRENG, JOAN BIANCHI, DOROTHY BLECHSTEIN, CHARLES BRADY, CARYL BRENNAN, PHILIP BRIND'AMOUR, MARGARET BROWN, MARY BUSZKA, BETTY BUTCHARD, WILLIAM CALLAN, CORNELIUS CANAVAN, ANNE CARLIN, JULIET CAPPIELLO, MARY CARUSO, JOHN CHIAVARO, ALICE CHMURA, JANE CIRRITO, ELIZABETH COLWELL, EDITH CORCORAN, MARIA CORSI, CHARLES CURTIN, JEAN DALY, MARIE D'AMICO, ELIZABETH DELANEY, MARY DELANEY, DOROTHEA DEL NERO, RITA DE MEO, GERALDINE DE PIRRO, HELEN DESMOND, LIBBY DI PASQUALE, CATHERINE DI VIZIO, MARY DOLAN, ESTHER DUDZIAK, MARY DWYER, MAGDELIN EICHLER, JEANNETTE FADDOUL, HENRY FESSARD, IRMA FIOCCA, ANNA BELLE FITZGERALD, EVELYN FRIEDL, ALICE GAMBLE, SANTA GIGLIA, WYONA GOETZ, EDWARD GREENE, MARY LOUISE GRIBBIN, ROBERT GRIFFIN, VIRGINIA HABICHT, MARGARET HAMMOND, DANIEL HEALY, EILEEN HEALY, DOROTHY HEIL, WILLENA HENRY, ELIZABETH HIEMENZ, PATRICIA HOPMAYER, JAMES HOHENSEE, MADELINE JOHNSON, HELEN KELLEY, JEAN KLOCKE, HENRIETTA LASH, OLGA LAWROW, JAMES LAZARONY, ROSE LUNGHINO, PATRICIA MACCLURE, MARGARET McDONOUGH, RITA McDONOUGH, MARY McDONOUGH, MARGARET MCGOVERN, TERESA MCGUIRE, ANN MCGUTH, JEANNE McMAHON, MARY A. MCPARLIN, GRACE MORRISSEY, IRENE MUNIGA, ANNE MURPHY, JACK MURPHY, RITA MURPHY, ROLAND J. MURPHY, STUART MYERS, HENRY NOWATKA, CLAIRE O'BRIAN, DOROTHY O'CONNOR, DAN O'DONNELL, MARY T. O'HERN, PATRICIA O'HERN, PATRICK O'SULLIVAN, OLGA PARENTI, CORA PAVONE, GENE PAWLOWSKI, LAWRENCE PERICAK, JEAN PERNER, MARY PFLANZ, JOSEPHINE PILERI, PATRICK PINTO, PATRICIA QUIGLEY, LOIS QUILTY, EILEEN QUINN, JANICE RANCE, SARAH RANDAZZO, GLORIA RAWLEIGH, CHARLES REDDY, MARGARET RICHARDSON, MARIAN RICOTTA, JANET RIZZONE, HELEN ROACH, CASS ROONEY, HELEN ROUDET, WINIFRED RYAN, MARY LOU SCHILL, MARGARET SCHOTT, MONTFORD SCHRADER, BETTY SCHREINER, WILLIAM SDAO, VIRGINIA SHANAHAN, MARGUERITE SHEA, BEATRICE SILVEY, HELEN SLAZYK, ROSEMARY SULLIVAN, JOAN TARRANT, WILLIAM TRAUTMAN, CHARLES TURCOTT, DONALD VOLTZ, ELIZABETH WAGNER, GEORGE WAGNER, LEO WEBER, ARLINE WENDLINGER, MARGARET MARY WOEPPEL, JOHN WUJEK, ESTHER YACKUBOSKIE.

Although primarily of a religious nature, the Newman Club is generally conceded to throw the most successful, informal parties.

The purpose of the organization is threefold: spiritual, intellectual, and social. The spiritual aim is fulfilled by retreats, Communion-breakfasts and the formal initiation. Through its speakers and discussion periods, the intellectual ideal is sought. Apparent in all its meetings, the social atmosphere is attained through dances, parties, and the Baccalaureate Breakfast for the Seniors. All three aims are combined in the annual three-day Province meeting.

NON-RESIDENTS ASSOCIATION

"Mother knows best" is true in the case of Buffalo girls who are fortunate in being able to live at home; but for those out-of-towners who room and board in the city, the union of non-residents is a substitute. Founded twelve years ago on State's campus, it has served these girls faithfully and cheerfully, showing them the "ropes" of College and City life. The N.R. A. is a versatile organization since it believes that "all work and no play makes Jill a dull girl." It promoted many activities throughout a year, highlighted by the "Reverse Rhythms" dance.



OFFICERS

President
Vice-President
Corresponding Secretary
Recording Secretary
Treasurer
FACULTY ADVISORS:

ESTHER MCGINNIS RUTH PALMER

OLGA PARENTI
JEAN MAXWELL
SONJA HUGO
HILDRED MULLER
ALBERTA BROWN
CATHERINE E. REED

MEMBERS

BERNITA ADAMS
NOTBURGA BACHMANN
DOROTHY BLECHSTEIN
CARYL BRENNAN
MARY BUECHNER
MARY CARUSO
CECILE CONKLIN
PEARL COOPER
BETTY ANN DION
ESTHER DUDZIAK
HELEN DUTTWEILER
JUNE FERNAAYS
ANNE GOULD
MARCELLE HAMSHIRE
CONSTANCE HOWE
CAROLINE KEYES
INEZ LIVERMORE
PAULINE MARTIN
ANN MCGUTH
ELEANOR MINTRUM
DOROTHY NICHOLS
RUTH POTRAPKE
MARGARET RUSSELL
KATHRYN RUFERT
DOROTHY SCHELBLE
ERIO SMITH
BETTY VANDER WERL
MARJORIE WOODRUFF

HELEN AGLE
JOANNE BALDWIN
JEAN BOWEN
ALBERTA BROWN
DOROTHY CHAMPLIN
MARY CLARE
EDITH COOMBS
JENNIE CRANSTON
MILDRED DRAGON
MERIBETH DUNCKEL
JEANNETTE FADDOUL
ANNABELLE FITZGERALD
MARY GUILD
EVE HENRICKS
SONJA HUGO
RUTH KLINE
JANE LESSO
JEAN MAXWELL
LYDIA MENGES
EMMA MORONE
OLGA PARENTI
LOIS QUILTY
LOIS RIEBENNACHT
AMELIA SALVAGGIO
MARY K. SEARS
GERTRUDE SOULE
JEANNE WALSH
ANN YAW

LOUISE ARNOLD
MARGERY BENNETT
VIRGINIA BOYD
ANNE BRUNETTI
HARRIET CARR
MILDRED COHEN
ELEANOR COOMBS
ELINOR DIKEMAN
DOROTHY DUBERT
DORIS DUTCHER
FRANCES FENN
PRISCILLA GIBSON
MARGARET HAMMOND
WILLEMA HENRY
HELEN JOHNSON
CLARASA KRISHER
MYRTLE LOTTES
DOROTHEA MCCRAY
HELEN MELROSE
HILDRED MULLER
EVELYN PERENBY
MARJORIE REDFERN
MARY RYAN
RUTH SCHAERTEL
AMY SMITH
LOIS TUKEY
MARY WHEELER
ANITA ZUBRES



MEN'S CAMPUS CLUB

OFFICERS

President	CHARLES H. CLEMONS
Vice-President	JACK H. CHARLES
Treasurer	DONALD F. KUHNS
Secretary	CHESTER A. PALKA

FACULTY ADVISORS: RAYMOND M. FRETZ, ANDREW W. GRABAU

MEMBERS

- | | | |
|----------------------|-------------------|-------------------|
| ALBERT ABGOTT | EDMUND BACH | ROBERT BLACK |
| WALLY BOHM | EDMUND BOWMAN | WILLIAM BOYLE |
| CHARLES BRADY | RALPH BRIGHTON | BOYD CAMPBELL |
| CORNELIUS CANAVAN | ELLIOT CARLSON | ARTHUR CARR |
| CARMEN CATUZZI | JACK CHARLES | RUDOLPH CHERKAUER |
| JOHN CHIAVARO | CHARLES CLEMONS | IRVING COHEN |
| BRIAN COLE | EDWARD COLLARD | RAY CRANE |
| CHARLES CUMBO | SCOTTY CUNNINGHAM | THOMAS DAVIS |
| PAUL DELLINGER | ROBERT DIETTER | JOSEPH DORCZAK |
| SAMUEL FEHRENZ | JOSEPH FERRARA | CARLTON GERBRACHT |
| HAROLD GILBERT | WILLIAM GLASGOW | ROBERT GRAHAM |
| WILSON GREATBATCH | CHARLES GREMKE | STEPHEN HARRISON |
| EDWARD HELWIG | CLEMENT HERMON | EARL HORN |
| HERBERT KAISER | ROBERT KINGSTON | DONALD KUHNS |
| BERTRAM LEARMAN | NORMAN LEEGE | GOMER LESCH |
| PETER LUCAS | MURRAY LUSTIG | JOHN MAROSY |
| JOHN MATTISON | FRANK MATZKE | ROBERT MAYER |
| NORMAN MEYER | WILFRED MORAN | DONALD MUNSON |
| HENRY NOWATKA | ELMER NEUREUTHER | HERBERT NEWLOVE |
| FRANK NUTIS | DANIEL O'DONNELL | GEORGE PAGAN |
| CHET PALKA | ROBERT PATELUNAS | DASHIELL PERKINS |
| LAWRENCE PERICAK | KENNETH PHILLIPS | GEORGE PIEPER |
| ROY REED | CHARLES REEDY | PAUL RITTMAN |
| HAROLD ROSENBAUM | STANLEY SACHA | ROBERT SCHAPER |
| MONTY SCHRADER | JOHN SCHUELER | NICHOLAS SMITH |
| AL SMUKLER | GILMORE SPEAR | WILLIAM STAUFFER |
| EVERETT STEVENSON | DELLZON STOKES | JAMES SWEET |
| CHESTER SWIERCZYNSKI | RICHARD TEMPLITZ | WILLIAM TRAUTMAN |
| LOUIS VARGA | JOSEPH VARGA | ROLLIN VOGAN |
| DONALD VOLTZ | RICHARD VROOMAN | FRANCIS WANDELL |
| LENN WIELOPOLSKI | CHARLES WEIGAND | JOHN WIJEK |
| | ROBERT WOLF | |



Men's Campus Club

Baffled freshmen bless the "ice-breakers" that the Men's Campus Club provides in Freshman Camp for men. The big gap between high school and college seems much smaller after a care-free weekend with upper-classmen and faculty. Freshmen, however, are not the only ones who benefit by Campus Club activities. Throughout the year the club offers dinner dances, gymnasium nights and skating parties, which serve to bring together a large cross-section of students. Unrestricted membership and a continued program of activity make the Men's Campus Club a popular organization for both Freshmen and upper-classmen.



PSYCHOLOGY CLUB

Since "I" has always been of supreme interest to the individual, it was only natural for a group of students curious about the intricacies of the human mind to form an organization. In 1937 such a group of students did combine and call themselves the Psychology Club. Mental Hygiene was the keynote, and this has been broadened to include all phases of psychology beyond that offered in the classroom.

Although a keen interest in the work and purposes of the club is a deciding factor for membership, only those with a pre-semester average of "B" in psychology and an aggregate average of "C" are eligible.

In the four short years of its existence the club has been able to offer its members a varied program, which not only satisfied curiosities about psychology but also aroused new curiosities and problems. Included in the many activities in which the club participated was an assembly program, and the annual collection of old books and magazines for the library of the State Hospital.

OFFICERS

President	BARBARA RUDOLPH
Vice-President	GERALD CLARKE
Recording Secretary	EUNICE TEPAS
Corresponding Secretary	FRANCES EPSTEIN
Treasurer	MARIA CORSI

FACULTY ADVISORS

REUBEN S. EBERT	MARGARET S. QUAYLE	OSCAR E. HERTZBERG
ESTHER MCGINNIS	PAUL W. SLOAN	

MEMBERS

GERTRUDE BERLIN	HELEN BROOKS	GERALD CLARKE
MARIA CORSI	JEAN DALY	FRANCES EPSTEIN
ALICE FULLER	MARY GRAHAM	NORMA KRAUSE
JEAN MACMAHON	MARIAN MADEE	ROBERT MARKS
HELEN MELROSE	RUTH OCHS	ROBERT PECK
MARIAN RICOTTA	HELEN MELROSE	BARBARA RUDOLPH
JANICE SMITH	RALPH SMITH	JOAN TARRANT
	EUNICE TEPAS	



RURAL CLUB

Known principally because of its enthusiasm for fresh air and country life, the Rural Club attempts to acquaint its members with the problems of the rural school. The chief project of the rustics is the Bureau of Instructional Materials, a great boon to practice-teachers meeting their first experiences in the country school.

This year the members again "adopted" a rural school. They expressed their paternalism by sending gifts of clothing, and by entertaining the children with a play. The May Banquet, to which all rural critics and school trustees were invited, was another feature of the club's program to foster a relationship between the college and the rural schools.



OFFICERS

President	LORRAINE CLEARY
Vice-President	SHIRLEY MOORE
Secretary	RUTH MILLER
Treasurer	BETTY STEGMAN

MEMBERS

AGNES ALVAREZ	EUGENIA BENCAL	IRENE BATT
OLIVE BELLAMY	NINA BROWN	RUTH BLACKER
JOYCE BRINKEL	ANN EARL	LORRAINE CLEARY
MARIA CORSI	HANNA GETZ	ALICE EATON
SYLVIA GAROFALO	ARLENE GROLL	SANTA GIGLIA
MARJORIE GOTTLIEB	HELEN JUZWIAK	JANIS HAENSZEL
RUTH HUPPUGH	DOROTHY LOCKE	GRETCHEN KAUTZ
DOROTHY KLEIS	PATRICIA MARONEY	ELAINE LONGENECKER
ROSE LOVECCHIO	VIRGINIA MIELCARSKI	JEANNE McMAHON
MARY ALICE MCPARLIN	EMMA MARONE	RUTH MILLER
SHIRLEY MOORE	SOPHIE ORKISZ	RITA MURPHY
JEANNE PIPER	ANGELA PROVENZANO	MOLLY PRYNNE
SARAH RANDAZZO	DOROTHEE REYNOLDS	MARION RICOTTA
HELEN ROACH	HELEN SANDECKI	BEATRICE SILVEY
BETTY JANE SMITH	MARION SONTHEIM	BETTY STEGMAN
ALICE STIELOW	IRENE STRIKER	EDITH TAYLOR
MARY TAYLOR	MARGARET TEFFT	JEAN THOMPSON
GERTRUDE TJEERDSMA	GENEVIEVE TREICHLER	JEAN VEDDER
RUTH VIOX		DORIS WATERWORTH

FACULTY ADVISORS

KATE V. WOFFORD

HOMER BRUCE



Y. W. C. A.

OFFICERS

President	MARGARET ESCHNER
Vice-President	JEANNE PADGINTON
Secretary	MARION PIERCE
Treasurer	RUTH HUPPUGH

MEMBERS

ROSARIA BALLING
 ISABELLE BRAMMER
 DORIS CAMPBELL
 DOROTHY CORLIS
 GERALDINE DEPIRRO
 JEAN DOUGAN
 DORIS DUTCHER
 JUNE FERNAAYS
 ARLINE FRANK
 MARJORIE FRISBEE
 ELIZABETH GERMONEY
 BETTY GREVER
 GEORGETTA HERL
 KATHERINE HORNUNG
 MARION JOHNSON
 INEZ LIVERMORE
 MADELINE MARSHALL
 HELEN MELROSE
 IRENE MUNIGA
 GRACE NIMMER
 ULINE PACZYNSKA
 CORRINE PALMBERTON
 MARION PIERCE
 THELMA POPP
 MARGERY REDFERN
 DORIS RUSLINK
 MARY SEARS
 ERMA SILL
 BETTY SMITH
 BETTY STEGMAN
 EUNICE TEPAS
 DOROTHY VINCENT
 GERALDINE WELSH

JEAN BEARDSSELL
 PEARL BREITMAIER
 WINIFRED CAPLE
 JUNE CORNELL
 BARBARA DERRICK
 JEANETTE DOUGAN
 MARJORIE EHDE
 RUBY FITCH
 CAROL FRAZEE
 EDITH GAUPP
 JEAN GIPP
 JUNE HAGSTROM
 ELLEN HIRSEMAN
 RUTH HOUSER
 BETTY KING
 PATRICIA MACCLURE
 EDITH MARTIN
 JEAN MITCHELL
 MARGARET MURRAY
 RUTH OCHS
 JEANNE PADGINTON
 ALICE PEREW
 FRANCES PIWOWARCZYK
 ROSEMARY RATHMAN
 JEAN REEVES
 WINIFRED RYAN
 OLGA SHAPER
 CHARLOTTE SIMMONS
 ELIZABETH SNOKE
 RUTH STERLING
 JOYCE THOMAS
 BETTY WAGNER
 BETTY WOLF
 HELEN YIANYLOS

RUTH BLACKER
 BETTY BUTCHART
 MARJORIE COOK
 PEGGY DAVIES
 BETTY DOHN
 JEANETTE DUMKE
 MARGARET ESCHNER
 JOYCE FLAMMANG
 EVELYN FRIEDL
 CLARINE GENET
 JUNE GRANT
 GERTRUDE HEMSTREET
 MILDRED HOOD
 RUTH HUPPUGH
 JANET LEWIS
 MARION MADER
 EMMAJEAN MCGURN
 NORMA MUNGER
 MARGARET NEVILLE
 MARY JANE ORCUTT
 VIRGINIA PAGE
 THERESA PETRAS
 MOLLY PRYNNE
 GLORIA RAWLEIGH
 BETTY RUDEN
 RUTH SCHAERTEL
 MARGUERITE SHEA
 BETTINA SMITH
 HELEN STANAGE
 JANET STOWELL
 VIRGINIA TOMIC
 ADELE WALSH
 HELEN WOLFPORD



Y. W. C. A.

Amidst a busy season of knitting for the Red Cross, conducting frequent religious round-table discussions, and holding supper meetings, the Y.W.C.A. took time out at Thanksgiving to present a colorful pageant in the Assembly. At the same time, its members distributed baskets to poor families. During the Christmas season, a party was held for the under-privileged children of Buffalo.

A panorama of Nursery rhymes, turtle races, root beer gardens, and flower stalls made the "Y" Carnival one of the most colorful ever held.



ALUMNI ASSOCIATION

As a means of keeping State graduates in continued close contact with their Alma Mater, the Alumni Association participates actively in campus life. Its yearly program, although it is planned to interest all students, offers special guidance to the Seniors, soon to meet the joys and problems of their profession. Like a large but loving family, the Alumni Association is ever ready with encouragement—guidance—friendship.



ALUMNI ASSOCIATION OFFICERS

<i>President</i>	MRS. JEAN CARMICHAEL VEDDER, '25
<i>Vice-President</i>	MR. BYRON SCHOTTIN, '26
<i>Recording Secretary</i>	MISS MARY LENNIE, '21
<i>Financial Secretary</i>	MRS. AGNES REIMAN VOLLMER, '13
<i>Treasurer</i>	MR. FREDRICK SCHULTZ, '16
<i>Historian</i>	MISS MARY DARKER, '37
<i>Permanent Secretary</i>	MRS. CAROLINE K. GORDNIER, '36
<i>Immediate Past President</i>	MR. PAUL WAMSLEY, '15

DIRECTORS

1938-1941	1939-1942	1940-1943
MRS. ELIZABETH MACK ROTH, '07	Miss Helga Castren, '21	MR. WALTER HEFFLEY, '35
MR. ARTHUR LORD, '34	MISS ELIZABETH MATSON, '22	MR. ROBERT GRILE, '28

ATHLETIC ASSOCIATION

OFFICERS

<i>President</i>	HAROLD BEAL
<i>Vice-President</i>	VIRGINIA COHO
<i>Secretary-Treasurer</i>	LINDSAY FARNAN

FACULTY MEMBERS

HUGH E. COYER	JOHN FONTANA	RUTH E. HOUSTON
---------------	--------------	-----------------

MEMBERS

AGNES BARD	MARGERY BENNETT	WILLIAM CALLAN
IRVING COHEN	ANTHONY DISCIPIO	MARJORIE DUTHIE
SAMUEL HALPERT	EUPHRA LUPKIEWICZ	CHARLES MCCARTHY
MARGARET MCCULLOR	CHESTER PALKA	HELEN SLAZYK
BETTY SNOKE	WINFORD SWANSON	VIRGINIA TOMIC
ROBERT WOLF		

If the mystery of the disappearing five-dollar bill (which occurs semi-annually in connection with the payment of our Blanket Tax) has caused some consternation among the student body, it is doubtlessly consoling to know that the payment automatically makes the student a member of the Athletic Association.

The Association, chosen from the student body and faculty, supervises all phases of athletic activity in the College. The extensive program includes scheduling varsity athletic games, receiving visiting teams, arranging after-game dances, awarding athletic awards, and conducting tournaments and intra-mural games.



SENIOR WOMEN'S GLEE CLUB

OFFICERS

President	BETTY JEAN WILLIAMS
Vice-President	BETTY JANE SMITH
Secretary	JANE NORTH
Treasurer	EUPHRA LUPKIEWICZ
Librarian	HELEN BOLTON
Scribe	MARY BISTOFF

MEMBERS

SALLY ANDERSON	RAMONA BARNES	GWENDOLYN BELLAMY	MARY BISTOFF
HELEN BOLTON	VIRGINIA BOYD	CARYL BRENNAN	VERA BURKLEY
EVELYN CAGE	ANNE CARLIN	VERAL CASHMORE	BERYL CRAIG
PHYLLIS CREED	LUCILLE DAKE	BETTY DOHN	DOROTHY DUBERT
DORIS DUTCHER	FLORENCE DZIOMDA	NATALIE ELDER	JOYCE FLAMMANG
MARJORIE FRISBEE	KATHLEEN GOODMAN	MARJORIE GOTTLIEB	HELEN GRAVES
RUTH HELSTROM	GRACE HIMMELE	SYBIL HUTCHINSON	WINIFRED JENNER
WINIFRED KENDALL	RUTH KRIEMAN	LOIS KROENING	ROSARIO LeVECCHIO
RITA LICHTBLAU	LAURA LINK	EMILY LUKASZEK	EUPHRA LUPKIEWICZ
MARGARET McCULLOR	KATHLEEN McKENNA	MARY ALICE McPARLIN	BEATRICE MACE
THELMA MILLER	VIVIAN MILLER	VIVIENNE MILLER	ELEANOR MINTRUM
MILDRED NEVILLE	JANE NORTH	OLGA PARENTI	ALICE PEREW
MARJORIE PHILLIPS	MARJORIE PEIRCE	FRANCIS PIWOWARCZYK	ROSEMARY RATHMAN
DOROTHEE REYNOLDS	MARGARET RUSSELL	HELEN SANDECKI	BETTY JANE SMITH
GERTRUDE SOULE	HILDA LEE STEIN	JANET STOWELL	JOAN TARRANT
RUTH TRAVIS	GERTRUDE TJEERDSMA	MARY VIVERETTE	BETTY JEAN WILLIAMS
	DOROTHY WINCHESTER	RITA WONSIEWICZ	

FACULTY MEMBERS

ROSAMOND O. ABATE RUTH E. SPEIR

"Music hath her charms" as does the Senior Women's Glee Club. No one will ever forget that dramatic moment when this organization, consisting of women with select voices, sang the beautiful carols at the Christmas Play. Yes, the Senior Women's Glee Club will always be remembered for the thrilling Spring Concert, and fascinating Spring Festival. Acting as host, in place of the University of Buffalo, State entertained a number of New York State Colleges including the previous hosts, the University of Rochester and Syracuse University.



FRESHMAN WOMEN'S GLEE CLUB

OFFICERS

President	CORA PAVONE
Secretary	THELMA POPP
Treasurer	AUDREY LINDHOLM

FACULTY ADVISOR

MARY L. McMAHON

MEMBERS

CELIA ADAMCZAK	LOUISE ARNOLD	PHYLLIS BAHLER	ROSARIA BALLING
BEATRICE BECKMAN	MARY BUSZKA	HARRIET CARR	ANNETTE CLARK
PEARL COOPER	HELEN DESMOND	CATHERINE DiVIZIO	ANNA DOYLE
FRANCES FENN	CLARINE GENET	WYONA GOETZ	RUTH GRONER
PATRICIA HOFMAYER	ARLENE JEROLDS	JEAN JETTAS	EILEEN KELLY
SYLVIA LIEBER	AUDREY LINDHOLM	ROSE LUNGHINO	DOROTHEA McCRAY
BETSEY MUELKE	CORA PAVONE	THELMA POPP	IRENE PUTMAN
JANET RANCE	MARGERY REDFERN	JANET RIZZONE	HELEN ROACH
HELEN ROUDET	KATHRYN RUPERT	ELIZABETH SAGE	ALICE SAMPSON
RUTH SCHAERTEL	DOROTHY SCHELBE	MILDRED SHARICK	BEATRICE SILVEY
CHARLOTTE SIMMONS	BERTHA SMITH	VIRGINIA TOMIC	JEAN TUTTLE
RUTH VAN WIE	ELIZABETH WAGNER	ADELE WALSH	HELEN WIGHTMAN

Organized under the direction of Miss Mary Louise McMahon, the Freshman Women's Glee Club provides a background and foundation in music for the future members of the Senior Women's Glee Club. This year, the club participated in both the Christmas Play and the Spring Concert. Frequent parties provided a medium for social activities.

TRIADS

OFFICERS

President	RITA LICHTBLAU
Vice-President	MARY BISTOFF
Secretary	DOROTHY BISHOP
Treasurer	EILEEN QUINN

FACULTY ADVISOR MARY LOUISE McMAHON

MEMBERS

AGNES ALVAREZ	DOROTHY BISHOP	MARY BISTOFF	MARIA DELLAS
GERALDINE DePIRRO	BARBARA DERRICK	MARJORIE EHDE	GERALDINE FALING
ROSE GEORGE	RUTH HOUSER	VERONICA KNAUBER	RITA LICHTBLAU
DOROTHY LOCKE	MARIAN MADER	HELEN MANDRY	EMMAJEAN MCGURN
EVELYN PERENY	EILEEN QUINN	KATHRYN RUPERT	MARGARET TEFFT
	ELIZABETH WOLF	NORMA ZIEGLER	

"Her voice was ever gentle, low and sweet" can be attributed to Triad members. Because Triads is a musical organization for non-members of the Women's Glee Clubs, music appreciation opportunities are combined in addition to voice work. Triad members enchanted us at the Christmas party when we saw them in the guise of colorful carolers and they entertained and impressed us with charming songs at the Spring Concert. Music has many sides, as does the Triads, for this organization does not neglect the social life of the college.



MEN'S GLEE CLUB

OFFICERS

President	GLENN SEAMAN
Vice-President	MARVIN TRUDELL
Secretary	LEON GRABER
Treasurer	WALT BOLM
Accompanist	RUTH ALBRIGHT

FACULTY ADVISOR HAROLD C. CRAIN

MEMBERS

ALBERT ABGOTT	CHARLES AMBELLAN	WALT BOLM
DAVID COWNIE	THOMAS DAVIS	DONALD DONLEY
LEON GRABER	ROBERT GRAHAM	ROBERT GRIFFIN
ROBERT ISENBERG	ROBERT KINGSTON	JAMES LAZARONY
PETER LUCAS	CHARLES MCCARTHY	RICHARD MELOON
JOHN MOROSY	CARL OBERMEYER	ROY REED
DONALD RUNYAN	RAYMOND RYBCZINSKI	GLENN SEAMAN
CHESTER SWIER	MARVIN TRUDELL	JOSEPH VARGA
	DONALD VOLTZ	

Under the directorship of the new faculty member, Harold Crain, the masculine vocalists of the College meet twice a week to bellow out chords and choruses. This year, the men took an active part in the traditional Christmas Play. It was the annual Spring Concert, however, which offered the best opportunity for the club to display its various talents.

ORCHESTRA

OFFICERS

President	CHARLES GREMKE
Vice-President	STEPHEN HARRISON
Secretary	WINIFRED JENNER
Treasurer	WINIFRED JENNER

FACULTY ADVISOR

EDNA HURD

MEMBERS

ALBERTA ACKLER	RUTH ALBRIGHT	DOROTHY BARCLAY	CORNELIUS CANAVAN
HARRIET CARR	RUDOLPH CHERKAUER	CLAIRE CRACKER	MURDOCH CUNNINGHAM
LUCILLE DAKE	THOMAS DAVIS	GENEVIEVE DIXON	HARRIET EBBLIE
MAGDALENA EICHLER	GEORGIA FRESE	WYONA GOETZ	MARJORIE GOTTLIEB
MARY GREANOFF	CHARLES GREMKE	MARY LOUISE GRIBBIN	STEPHEN HARRISON
HUGH HASLETT	EDWARD HELWIG	RITA HENRY	HERBERT HILTON
MURIEL HOLMES	ROBERT HUNTINGTON	WINIFRED JENNER	CLAYTON KAMINSKA
JOHN KRYLO	HENRIETTA LASH	EVELYN LEIGHT	GOMER LESCH
RITA LICHTBLAU	MARY LUTZ	DOROTHY MAHL	MARIE MAHL
RICHARD MELOON	KATHERINE MUNLEY	MILDRED NEVILLE	DOROTHY NICHOLS
AUDREY OUGHTERSON	ROBERT PATELUNAS	ALICE PEREW	GEORGE PIEPER
ELEANOR PRITCHARD	ROY REED	MARGARET RUSSEL	ALBERT RYDZYNSKI
ELLEN SCHICHEL	ERIS SMITH	ALLEN SMUKLER	RUTH VIOX
RICHARD VROOMAN	NANCY WALKER	ROSS WILLSON	MARGARET WOEPPPEL

It peals with anticipation before each assembly; it swells with satisfaction afterwards; it gives forth its glorious best each spring at the annual college concert—our orchestra.
For those who, with their woodwinds, brasses and strings, take an active part, as well as for those who adopt a passive part in enjoyment, the orchestra is a vital part of college life.



BAND

OFFICERS

President	EDWARD HELWIG
Vice-President	GOMER LESCH
Secretary-Treasurer	MARGARET RUSSELL

FACULTY ADVISOR

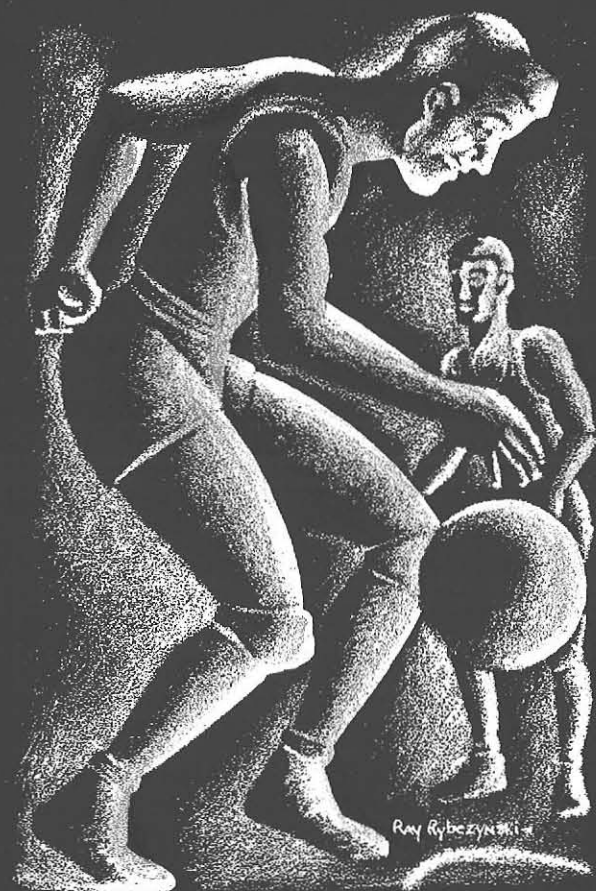
REUBEN S. EBERT

MEMBERS

JOANNE BALDWIN	CORNELIUS CANAVAN	HARRIET CARR
MARY CLARK	MURDOCH CUNNINGHAM	ELINOR DIKEMAN
GENEVIEVE DIXON	HARRIETTE EBBLIE	WYONA GOETZ
CHARLES GREMKE	STEPHEN HARRISON	HUGH HASLETT
EDWARD HELWIG	CLAYTON KAMINSKA	GOMER LESCH
DOROTHY MAHL	MARIE MAHL	MILDRED NEVILLE
AUDREY OUGHTERSON	GEORGE PIEPER	ROBERT POTTER
ROY REED	MARGARET RUSSELL	DOROTHY SCHELBLE
GLENDON SEAMAN	ALLEN SMUKLER	WILLIAM VANDAL
RICHARD VROOMAN	JANET WOODS	

There's something stirring about band music, especially when played at athletic contests. Our band certainly added to the color of the games and at the same time gave admirable support. Not limited to exciting "marches," the band also contributed to many phases of extra-curricular life. Foremost was the Spring Concert, which was very delightful. The band again covered itself with glory when, according to precedent, it led the Moving Up Day parade.

Just Watch that Team go



SPORTS

"Peace hath her victories no less than war." Yes, we can remember victories on the athletic field and on the gym floor; victories of mind and muscle; victories in fair play and school spirit. The muscle factory, in addition to turning out hosts of young Dianas and Apollos, gave us many thrilling and hotly contested games and intra-mural tournaments.

We recall here our heroes, those symbols of outstanding prowess whom we adore; our teams made of strength and unity; and the spectators who made each battle a winning one, in spirit at least. Through losses and victories we still say with pride, "Just watch that team go."

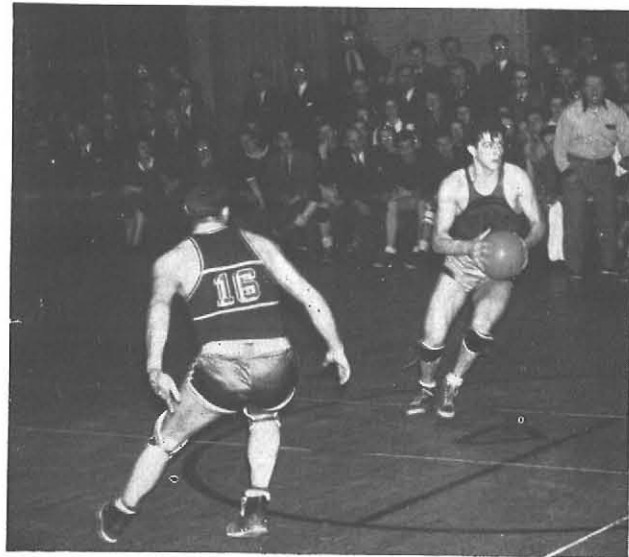
VARSDITY BASKETBALL

Captain—LINDSAY FARNAN
Manager—HAROLD BEAL

	State	Opponent
SYRACUSE	19	47
OSWEGO	52	54
WAKE FOREST	39	42
ALLEGHENY	29	34
FREDONIA	47	57
ST. BONAVENTURE	42	51
GENESE0	71	37
ONTARIO	45	49
THIEL	32	34
NIAGARA	35	59

Soccer season has passed, and the wintry winds of Buffalo are sweeping across the Quadrangle. Captain Farnan and his boys are working hard in the Gym in preparation for one of the most imposing schedules to face a State basketball team. We see on the schedule such teams as Syracuse, Wake Forest, St. Bonaventure, and Niagara—four of the outstanding quintets of the East.

The first game is with none other than the "Big Orange" of Syracuse. State loses to Lou Andreas' great team, which later defeated many of the top teams of the basketball world; but in this defeat the Orange



Lou, the ball, Niagara



Kneeling—Left to Right—Cohen, Vastola, Kingston, Captain Farnan, Halpert. Standing—Manager Beal, Chiavaro, Wolf, Swier, Swanson, Garelick.

and Black plays excellent ball, led by Swanson with ten points.

Oswego, an old rival, next journeys into town to take our team by two points in a heartbreaker.

On New Year's night we are all seated in the new Municipal Auditorium, fresh from Christmas vacation, among a crowd of over four thousand people. It is the moment that we all have been waiting for, to see the Orange and Black in action against the Southern Conference champions, Wake Forest. At the half, State is trailing by fifteen points and things look rather dark. In the most exciting second half of the season, our team rallies and is outscoring Wake Forest, 23-11; but at the end of the game, we are three points short of a victory, losing 39-42. Lou Vastola, a freshman and new star, tallies seventeen points in the game.

In the following week, we play hosts to Allegheny College of Pennsylvania. Again it is a close game, with Allegheny coming out on top, 34-29.

At Dunkirk and Olean, State loses to Fredonia and St. Bonaventure. Irv Cohen comes into prominence against Fredonia by chalking up sixteen points. At St. Bonaven-



The Big Game.

ture, we notice for the first time a small but scrappy freshman, Bob Kingston, who celebrates moving up from the Junior Varsity by dropping in seven points against the rugged Olean team.

State students take heart again when the Orange and Black drop Geneseo to the tune of 71-37, with Irv Cohen accounting for twenty of the seventy-one points.

Thiel College knows that it has met a difficult team when it comes to Buffalo the next week to defeat State by a margin of four points, 47-43. Lou Vastola is high scorer of the evening with twelve points. In the same week, State loses again by that unlucky four to the Ontario Agricultural College at Guelph, Ontario. Vastola is again high with thirteen.

The great day comes when State meets Niagara, traditional basketball rival for many years. Spectators are packed in the Gym so tightly that one hardly dares to breathe. Despite Murphy's fourteen and Vastola's ten tallies, State bows to a superior Niagara team. However, every old grad at the game will remember it as one of the best.

At first thought, the record of nine losses and one win does not

look too impressive. Then we remember the great games that we have seen — Wake Forest, Allegheny, Niagara, Thiel—, and decide that it wasn't such a bad season. We have four great prospects for three years in Vastola, Swanson, Kingston, and Garelick. With the return of Cohen, Murphy, and Swier our prospects for next season look very promising. We decide that a winning quintet is not necessarily the one that scores the most baskets but the one that plays its best in a sportsmanlike manner. We have that team.

JUNIOR VARSITY BASKETBALL

Coach . . . JOHN CHIAVARO
Captain . . . ANGELO SUOZZI
Manager . . . STANLEY SACHA
Assistant Manager FRANK MATZKE



Front Row—Trudell, Dailey, Captain Suozzi, Foster, Snitzer. Back Row—Coach Chiavaro, Stevenson, Manager Sacha.

Record	J. V.	Opponent
MILLARD		
FILLMORE	19	17
NICHOLS	32	19
BUFFALO ATH- LETIC CLUB	38	45
HUMBOLDT Y. M. C. A.	33	49
BUFFALO ATH- LETIC CLUB	32	29
NIAGARA FROSH	26	46
	180	205

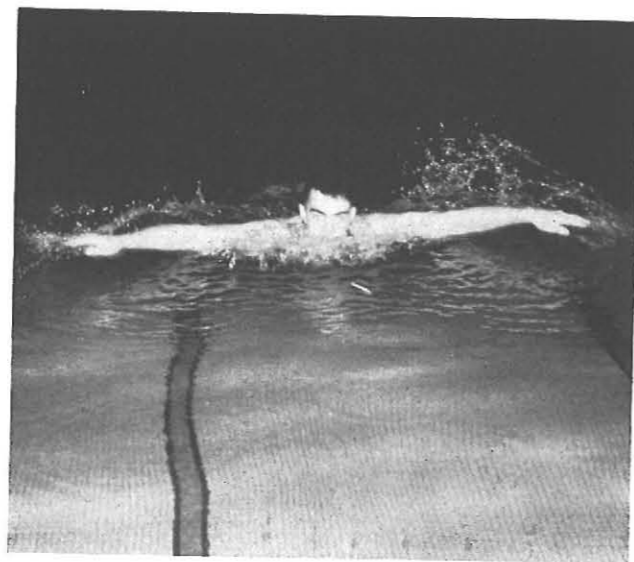
As we look at the Junior Varsity now, at the beginning of the season, we see what seems to be a better than average team. Wolf, Maroone, Foster, Dailey, Snitzer, and Herrick are good Freshman material for our team. Captain Suozzi, Stevenson, Trudell, and Palka are on the floor again to give some exciting moments in the preliminary games.

Under John Chiavaro's coaching, we find that the J. V. is able to start the season right with wins over Millard Fillmore and Nichols School. Palka has the high for the evening with eight points against Millard Fillmore and Wolf with eleven in the Nichols game.

The "Youngsters" drop the next



Front Row—Isenberg, Lipschitz, Cohen, Haslett, Captain Potter, Lucas, Romano, Marosy, Trudell. Second Row—Rosenbaum, Manager Sacha, Callan, Murphy, Griffin, Wolf, Chiavaro, Cownie, Maroone, Coach Coyer. Back Row—Phillips, Cunningham, Gilbert, Rogers, Stevenson, Voltz, Gremke, Ferenz, McCarthy.



Not a Splash!

two games with the Buffalo Athletic Club and Humboldt Y. M. C. A. quintets. Snitzer, with a twelve point total against the Athletic Club, and Stevenson, gathering nine in the Humboldt fray, stand out in their sharpshooting ability.

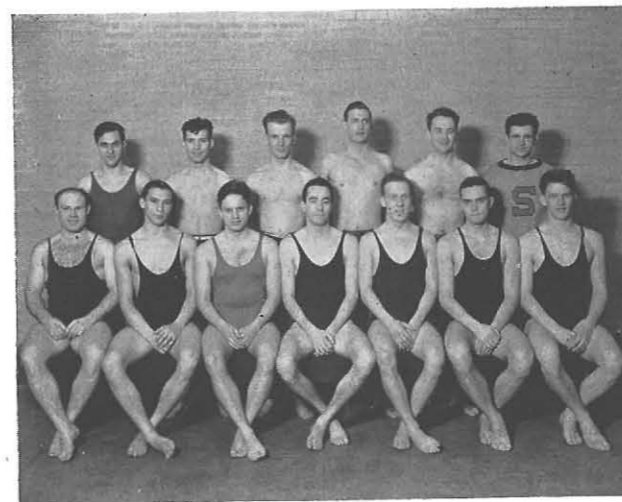
The following week the J. V.'s have an opportunity to avenge the earlier defeat at the hands of the Buffalo Athletic Club, and in true basketball spirit take over the game despite the presence of Bob Stewart, a former Syracuse luminary, in the Club lineup. Captain Suozzi with nine, and Wolf with eleven points lead the Statesmen to victory.

In the last game of the year, Niagara's strong yearlings defeat a stubborn State team in a rough and tumble battle. Aiken, a newcomer, a transfer from Alfred, leads our team in scoring.

Now, at the end of the season, we find that the Junior Varsity has brought out some very likely prospects for next year's varsity in the persons of Stevenson, Wolf, Aiken, and Foster, whose performances in the past merit their promotion.

SOCCER

It's a balmy day in September, and we are wondering how we are



Front Row—Phillips, Cherkauer, Kneer, Coach Tierney, Captain Ambellan, Rowley, Temnitz. Back Row—Rindone, Isenberg, Wandell, Vrooman, Clark, Manager Bach.

ever going to stand another year of that terrible grind. Suddenly we look toward the Soccer Field and see a large group of men kicking around a piece of leather filled with air. It's State's soccer team, with Captain Bob Potter, already down to hard work.

We stroll over toward this twisting mass of arms and legs and find Coach Coyer and Manager Sacha counting last year's letter-men—all four of them—Bob Potter, Joe Romano, Hugh Haslett, and Pete Lucas. We see some new faces in the group. Sacha tells us that the pink-cheeked boy is a refugee, fresh from the boat from war-torn Europe, John Marosy. The red-haired goalie is a Freshman, Bob Wolfe. Dave Cooke and Lennie Lipschitz are looking fit after the summer's vacation. It looks like a team with plenty of that element which makes soccer an interesting game to see.

Now it's the end of the season, and we review in our minds a few of the exciting highlights. We did lose five games to Oswego, Cortland, Allegheny, University of Rochester, and Colgate; and we tied Slippery Rock; but who can forget the stellar defensive work of fullbacks Cohen and Haslett, or Joe Romano's expert

handling of the ball! It was a team that, win or lose, played its best for the love of playing. With our new athletic field next year, and that fighting spirit all of our teams have, next year we may well say, "Watch that team go!"

Varsity SWIMMING

Captain CHARLES AMBELLAN
Manager HARRY SPEAR
Coach THOMAS TIERNEY

Record	State	Opponent
ROCHESTER	20	55
ALLEGHENY	37	25
NIAGARA	43	32
COLGATE	25	50
NIAGARA	37	38
	162	200

One of the major sports of the campus which has received too little attention in the past has been swimming. For several years our mermen have been outstanding in the East as swimmers. Through depression and budget cut, this team has continued to turn out fine performances. If we review the record of Captain Charles Ambellan's team of the past season, we find it was no exception.



The Megaphonists—Kneeling—Hilda Lee. Standing—Mac, Elsie, Skib.

Early in December, Coach Tierney and his boys boarded a bus to journey to the "River Campus" of the University of Rochester. The Yellowjackets have had an undefeated swimming team for the past three years. Here, Coach Tierney and a newcomer, Rudy Cherkauer, placed first in the 150 yard backstroke and 100 yard freestyle.

In the next meet, Allegheny came to Buffalo and was taken over by State to the tune of 37 to 25. In this, the first win of the year, Tierney, Rowley, and Cherkauer took first in the medley, Kneer in the 200 yard and 400 yard freestyle; Cherkauer in the 100 yard freestyle; Tierney in the 150 yard backstroke; and Rowley in the 200 yard breaststroke.

The following week, the same men took first places in identical events to defeat Niagara by the score of 43 to 32.

Although the team lost the next meet at Colgate 25 to 50, the medley trio of Tierney, Rowley and Cherkauer came through again with a first. Rowley made his usual win in the 200 yard breaststroke.

The final event of the year was a thriller with Niagara with State losing out in the last event by a one-point margin, 37 to 38. State won the medley, all of the freestyle events, and the 200 yard breaststroke.

An interesting sidelight to the season was the keen rivalry between Ross Rowley and Dick Temnitz in



Fencing—the newest sport at State

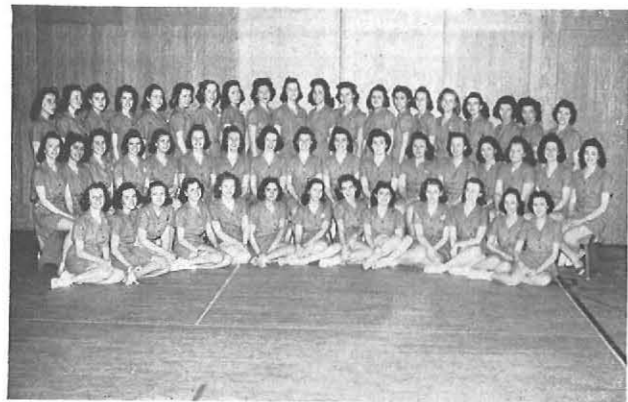
the 200 yard breaststroke. Rowley won the event four times with Temnitz close on his heels. Our medley team was defeated only at Rochester. Cherkauer and Kneer took most of the freestyle events in all of the five meets. State had the first place men but needed those extra points in the second and third places to come out on top in all of the meets.

FENCING

An innovation on State's Campus this year is the fencing group. An interested group of men and women of the campus have banded together to parry and thrust with the foil. Growing interest in the sport seems to give it promise of a long life on our campus.

CHEER LEADING

Cheer leading this year was handled ably by Skip Sommers and his dynamic helpers, Hilda Lee Stein, Mac Karchmer, and Sol Elfenbein. To Skip and his group must be given much credit for helping to inject the old Orange and Black spirit into the basketball games.



Girls' Cagers



Girls at Play.

WOMEN'S SPORTS

SOCCER

When the weather gets brisk—that means soccer—in mud half of the time, but that doesn't stop the games. The girls run out, bundled in sweaters, scarfs, and even mittens. Those on the front line tire rather quickly, while the goalies are bemoaning their lack of action. The girls like soccer because they can take out their hard feelings on the ball and other people's legs. You aren't a real player unless you finish the season with at least two bruises on your shins.

The Seniors were the upper-class winners. The final game was played against the Home Ec. Sophomores.

There was a separate contest for the Freshmen which was played in section teams. The winners, the Art Frosh, then played and beat the Seniors. Members of the winning team are: Eloise Adams, Mary Clark, Betty Germony, Carol Griswald, Jean Jettas, Shirley Lack, and Alice Lohans.

BASKETBALL

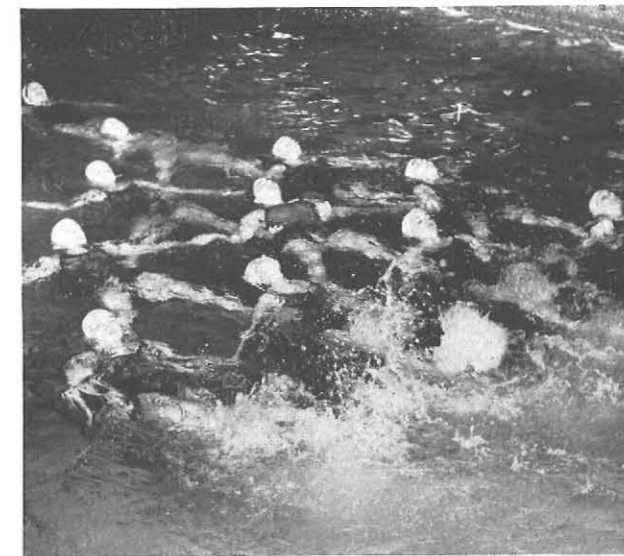
It's fast, it's exciting, it's fun! The best and most popular of women's sports is basketball. The turnout is tremendous and the eliminations started early this year. Freshmen especially showed a lot of spirit and good playing.

At the finish of the contest, the all-class games were played. The best players from each class were chosen to play against those from the other classes. In May the Orange and Black teams were picked, and they had a game to which all participants of the tournament were invited.

Three teams were left in the final tournament; Frosh Home Ec, Soph Home Ec, and Junior Home Ec.

SWIMMING

It's not the ole swimming hole these days for State mermaids; instead it's the pool. Dripping hair and turbaned scarfs are the ever-present evidences of this invigorating sport. It is compulsory for Freshmen and Sophomores. Accurate records of each person's achievement are being kept this year. Certificates are given for the passing of the tests.



In the Swim.

Sing to each class



BY NIAGARA'S RIPPLING WATERS,
STANDS OUR CITY'S PRIDE,
DEARER TO HER SONS AND DAUGHTERS
THAN ALL ELSE BESIDES.
HAIL, TO THEE, O ALMA MATER,
WE SHALL HONOR THEE,
ALL OUR LOVE AND DEEP DEVOTION,
THINE SHALL EVER BE.

FAR AND NEAR HER GLORY SHINING
DRAWS US TO HER SIDE,
NE'ER TO ANYONE DECLINING
HELPING HAND TO GUIDE.

GLORY, THEN, TO ALMA MATER
THROUGH THE YEARS SHALL RING,
AND ALL THOSE WHO FOLLOW AFTER
LIKE OURSELVES SHALL SING.

This being a freshman is just one long, exciting joy-ride—with all the trimmings, from spills and spine-tingling scares to negotiating impossible turns and getting all flustered over the disaster that never overtakes us.

There's that first long, gradual, down-grade from the pinnacle of diligence that all freshmen resolve to maintain at the beginning of their college adventure; that sharp, precipitous up-shoot that precedes semester exams, then that long, endless, breath-taking, terrifying swoop into the abysmal depths of the "dismals" that accompany the posting of marks. The second half of the ride is disastrously similar.

We dared to be taken for that ride. A courageous class, you see, but rather gullible. Otherwise we would not have fallen for the despicable trick that the Sophs pulled on us by greasing our end of the tug-of-war rope during Freshman Week.

But, as for exemplary conduct and behavior, that's a different matter. Ask President Rockwell about our assembly conduct or

VERDANT



FRESHMEN



look at our Betty Grever who, as head of the Student Council Ethics Committee, is a model of freshman poise and decorum.

No former Freshman Class has ever submitted more meekly to its torturing week of hazing. We rolled peanuts down the Student Center with our noses, we romanced "Dog-patch style," we attempted to have stray faculty members determine whether or not "ontogony did recapitulate philogony," and, oh yes, we even got married—to please Sophomore Kay McKenna.

And when it comes to athletics—well! We present with justifiable pride Winford Swanson, a fast-stepping lad on any gym floor, whether it be during a basketball game or noonday dancing—or take Vastola and Ben Garelick. You see, there were as many Freshmen in there losing for dear old B. S. T. C. as there were Sophs, Juniors, or Seniors.

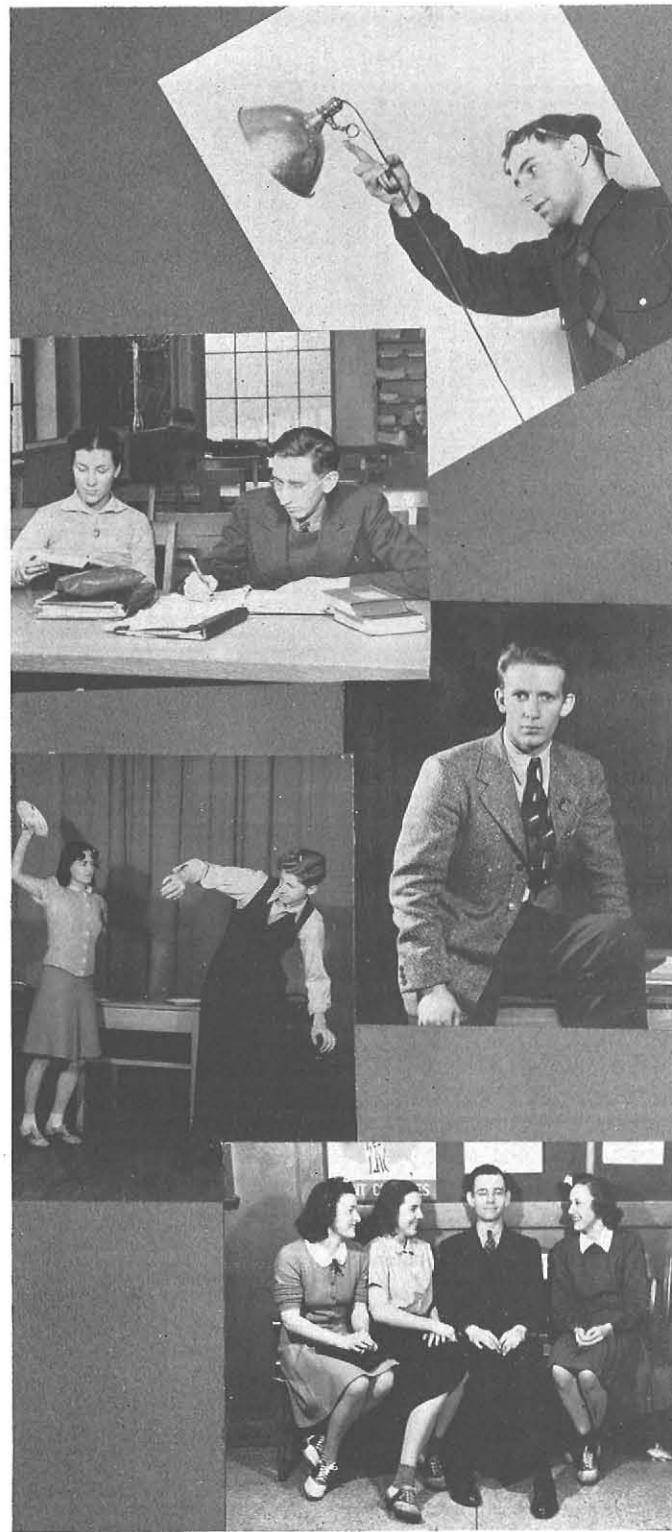
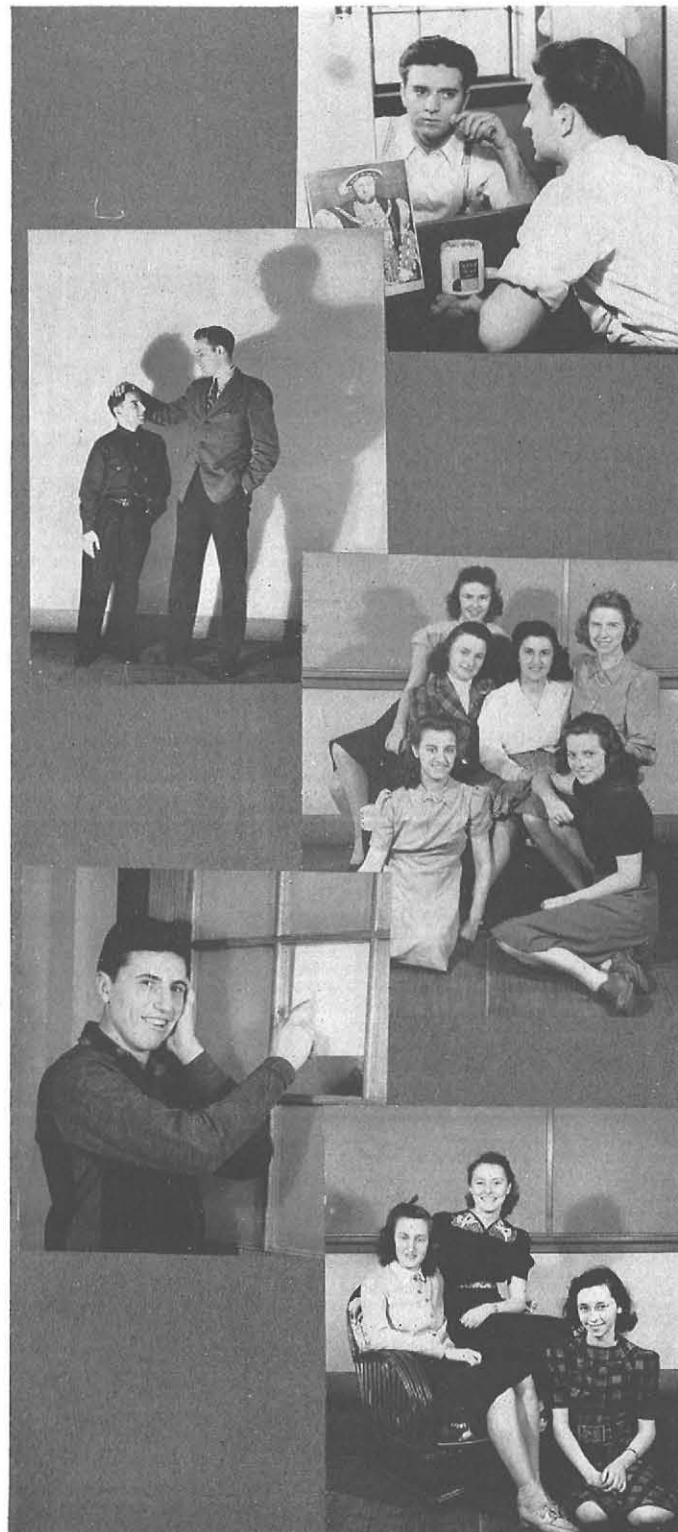
There's no denying that Jim Cherkaur splashed on as much water out of our pool as any upper-classman on the swim squad, and it's common knowledge that Bob Wolf and John Morosy assisted

Joe Romano on the soccer squad as ably as any of the players. It may, however, have skipped your attention that our own Sam Snitzer, of scholastic fame, was the only B. S. T. player to win a match in the first ping-pong tournament against the U. of B.

We shall tactfully pass over scholastic achievements, claiming that uninitiated freshmen are the natural prey of college profs, and jump into another field of freshman achievement by presenting Don Runyon, as good a debater as has ever wiggled an uvula in defense of the Orange and Black.

Trodding creakingly over the boards into the field of dramatics, we feel secure in stating that no other freshman class could possibly have boasted of having so heavenly a Madonna as Vicky Lauer, so lovely an Angel of the Star as Betsy Muelke, or so stately a St. Gabriel as be-wigged Walt Mordaunt.

And singing! How many freshman classes can say they presented the school with a new Alma Mater or that they had such a leader as Jean Jettas to conduct them into a position of honorable mention at the Interclass Sing? However, we frankly admit defeat when the



subject of Music 101 is broached. That is becoming too specific—it was only in matters of mass discord that we excelled.

Not a trick did we Freshmen leave untried. When Uncle Sam first called, Brian Cole and Bill Greatbacht threw off their shop coats and donned army khaki to prove that the sword is still mightier than the lathe.

All through the year—Faculty Reception, Holly Hanging, Soph-Frosh Hop, Stunt Nite, Moving-Up Day—the Freshmen continually had their fingers in the pie.

Largely responsible for whatever successes the class enjoyed are the Freshman officers, Walter Mordaunt, Anne Yaw, Wilbur Moran and Jean Hanrahan.

And so, now that the Art Section can draw an artistic game of tit-tat-toe, the Home Ecs can baste a seam—and almost cook, the Industrial boys have completed their fourth set of matched Chop Sticks, and the General College group has discarded the old-fashioned hickory stick in lieu of modern Child Psychology, we feel ourselves free to throw off the verdant badge of Freshmanhood and assume the pseudo-sophistication of Sophomores.

We came to State in the fall of '39, eager, wide-eyed, a little scared, and filled to the hilt with noble aspirations. From a collection of strangers, we very quickly became friends, and out of our class grew a unity of respect, of spirit, and of love—our class.

So it was together we learned about college, together with our companions we grew slowly wiser, more sophisticated, more self-asserted. We earned our first laurel at Christmas time when we decorated the second floor well enough to merit first prize in the Holly Hanging contest. Soon afterwards we staged our first dance, the Leap Year Hop, in cooperation with the Sophomores. We even established a date bureau, a first-come, first-catch service with our beautiful co-eds giving complete cooperation.

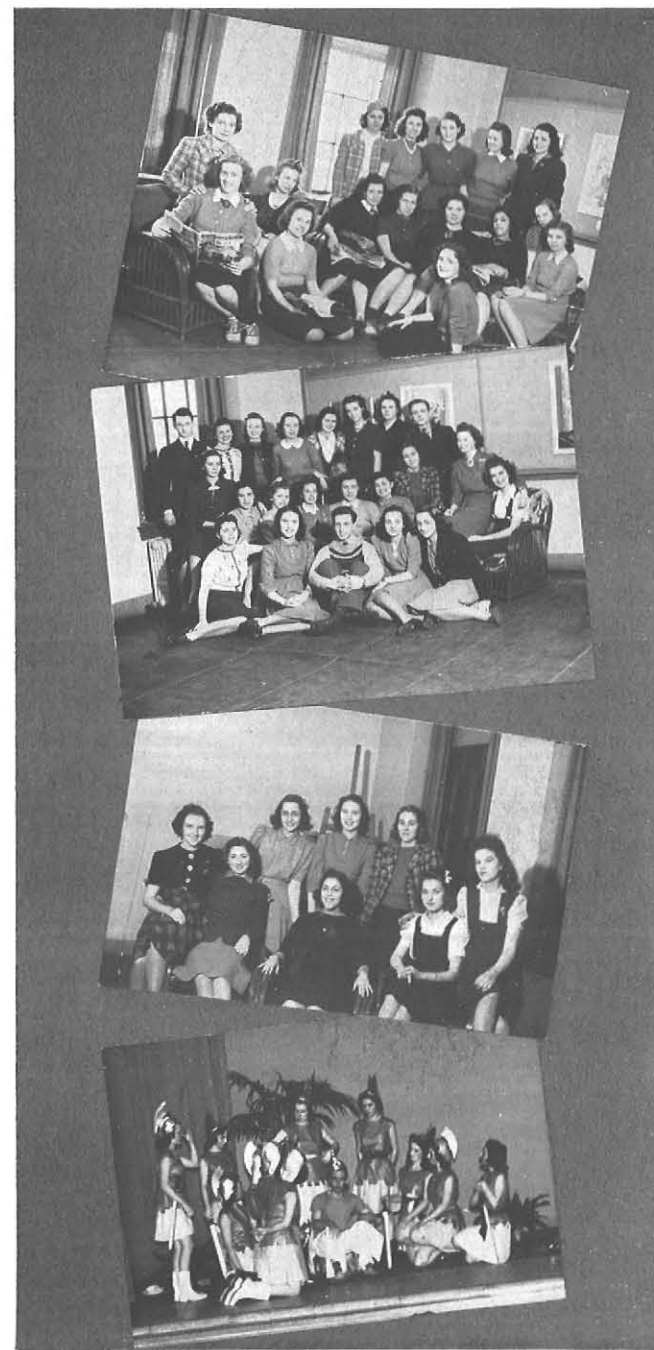
We were not lacking in sport participation either that first year. Lanky Chet Swier became one of Coach Coyer's best scorers on the varsity basketball team. Our plucky Home Ec-ers, under direction of star player Marge Bennett, wrested the championship with some difficulty from determined Seniors. We were well represented at all times on the badminton court and in the ping-pong room.

On Stunt Nite, Section 4 came forth with the hilarious antics of Chuck Reedy, Don Voltz and Del

BLITHE



SOPHOMORES



Stokes on a "Bored of Censorship."

In the early spring we decided that, despite our warnings, the members of the faculty were, after all, interested in our welfare and not our scalps. So we dressed up in our best suits and afternoon dresses and gave them a tea just to show them we were appreciative. We hope we have established a precedent for all freshman classes to follow.

During the past few years our country has been becoming increasingly airplane-conscious. From their own dry enthusiasm and to promote the interests of others on campus, two of our Jacks, Armstrong and Charles, organized the Aviation Club. With the assistance of the faculty advisor, Miss Palmer, the club soon became a very popular activity.

The Y Carnival came along and we came along, too, with our low prices, quick service marriage bureau. The parson did his best to pacify the campus queens and make the eligible bachelors ineligible.

Before long it was Moving-Up Day and our first chance to participate in this lovely tradition. We sent Peg Brown and Marge Shea to wait on the Queen, while we all exchanged roses, and thus abandoned our babyhood. In the parade, our Home Ec-ers won first prize

with their huge birthday cake decorated with human candle-holders. Our hygienic class float received honorable mention.

But then—could we believe it—June came upon us. Parting was near. For one last glorious fling, we threw our memories party. Into one joyous evening, we crowded a year of laughs, of tears, of happiness, a little heartache, a great deal of friendship. We had a strengthening bond of love now—memories to share. "S'long—write—good-bye."

We came back again another fall to find ourselves sophisticated sophomores, no longer undried frosh. There were youngsters about, eagerly asking questions to which we distributed blithe answers. We asked them to make vegetable dolls with a "there, now!" attitude. But those clever frosh came very near to turning the tables on us when they submitted their assignments. So exquisite were their creations that we had to call "HELP" when it came to the judging.

Soon Interclass Sing was in the air, with its uproar of magnificent hopes, whispered plans, and frantic rehearsals. Kelley and Daly, once their Irish was aroused, haunted the halls, nabbing us unexpectedly and chasing us to rehearsals until



we learned to bellow our very best. On that glorious day of the sing, Rosemary Rathman led us, while we vowed from our hearts "Always and Forever, we'll think of thee—". When the results came—joy of joys! We had won, we had received the coveted Interclass Sing banner.

After that, we turned a little corny and cast haystacks about the gym for our second Soph-Frosh Hop. Right hands round dary doe, swing your partner—we danced till we shook the rafters off the Little Red Barn.

Withal our activity, we did not neglect the more serious aspects of our training. Four of our boys, Bill Trautman, Jack Armstrong, Jack Charles and Jack Bannister, received flying certificates which they earned from CAA training. We partook of another Stunt Nite, conducted turtle races at the Y Carnival, and on one more Moving-Up Day we advanced another notch.

Yes, we've sailed two years so far, two full, superb years. With staunch Captain Dan O'Donnell ever at the helm, we sailed always toward new and richer horizons. We feel at least a little justified now, as we ask,

"If the class of '44 comes, can success be far behind?"

The scene—A stately Georgian portico—

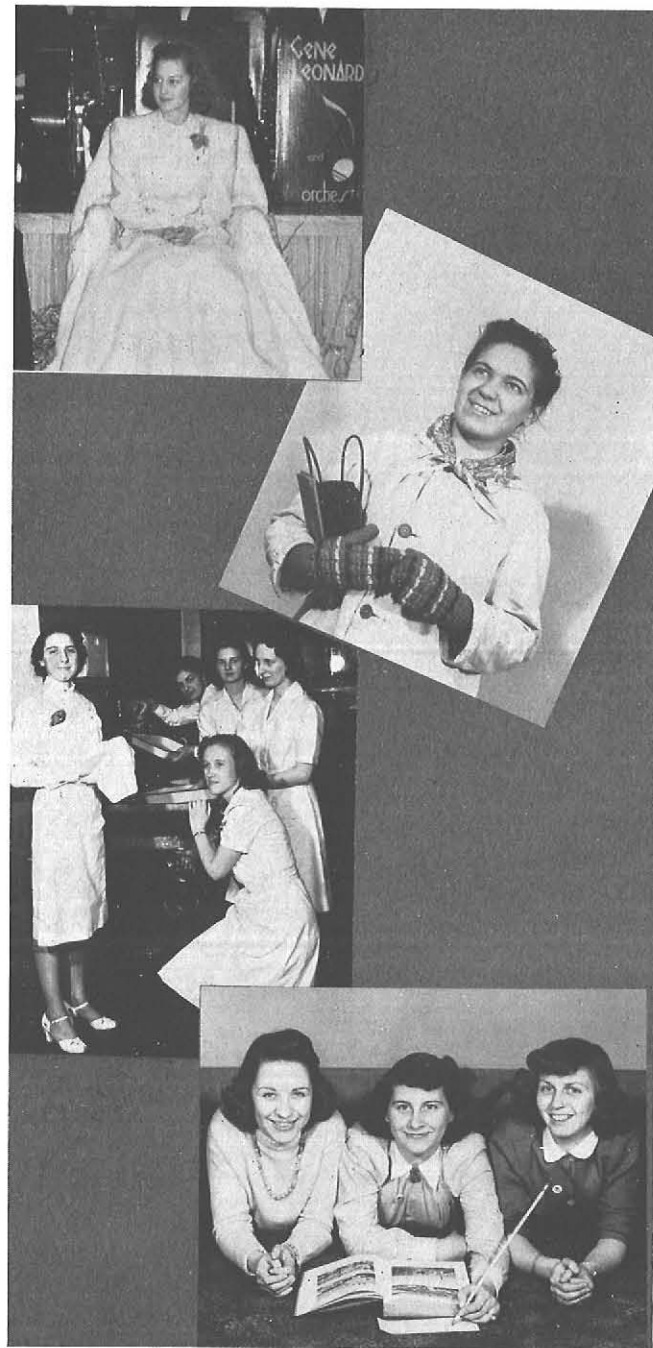
The time—A fine, late-summer day, September, 1938, early in the morning—

The characters—The young, eager, untried Class of '42—

Yes, that was we on freshman registration day in 1938. Many of us were still flushed from our adventures at Freshman Camp, and we carried this glow with us through our orientation days and "hell week."

Very soon, as our class entered whole-heartedly into college life, a number of personalities began to emerge. Roland Murphy, Peter Lucas, Bill Callan, and Irv Cohen, on the soccer squad were giving an indication of the talent our class has since brought to all State's athletic fields. Mary Lutz, as our class vice-president, became known as an able and friendly leader. Earl Obermeyer, Gertrude Berlin, Ralph Smith, and Bob Marks were recognized among the

SOPHISTICATED



122

JUNIORS



123

actors of the class, and George Pagan had already demonstrated that business-like efficiency which has since served our class so well. And so, with many things to do, we came rapidly to Moving-Up Day, sans the sadness of the Seniors and the poignancy of departure, and stood at the threshold of a new experience.

We arrived at college in our Sophomore year, surely a little more sophisticated, a little more mature. How we entered into college life that year! It was our turn to initiate the newcomers to the college family, and we did this with a conscience,—yet tradition was tempered with a mercy learned from our own earlier, harsh experience. We brought our energy and enthusiasm to all the traditional Sophomore activities—the Inter-class Sing, the Toy Drive, and the Soph-Frosh Hop. More personalities were coming to the fore. Ken Philips began to demonstrate our version of the perennial treasurer.

Barbara and Juanita Rudolph appeared prominently on publications staffs, the Dramatic Club and the Psychology Club, while Dick Swart and Esther Yackuboskie were active in the Art Education circle. Carol Frazee, our vice-president, established a reputation for knowing something about everyone. Probably, of all our memories of our Sophomore year, in our college middle-age, we shall think most often of Moving-Up Day, and our re-elected president, Mary Lutz, enunciating so ably our belief in a democratic class solidarity.

Another September brought many of us to college as Junior Counselors. Under the chairmanship of Gerald Clarke, volunteer counselors guided the new Freshman Class successfully through the exciting first days of college—days pleasantly reminiscent of our own mellowed experiences.

The first half of this year was marked by an ever-increasing pace of activity for the Junior Class—



a pace that reached its pitch just before the Christmas vacation, with the class generously represented on the cast of the Christmas Play; with jolly Ken Philips acting as the white-bearded guest of honor at the Christmas Party; and "Winterlude," at the new Kleinhans Music Hall, ending the season in a triumph for the Class of '42. Who will ever forget our Snow Queen, Ruby Fitch, or those forward-looking favors?

After the semester examinations, the color of the class changed, taking on very definitely that professional hue which has tinted us from time to time since our beginnings here. We started this year, students only; we leave it, students still, but teachers also.

And now, the curtain has closed on this, our third and "best-so-far" act. With the confidence won by three years of success, we are waiting for the curtain to open on our last act—we, the Class of '42, a united, experienced, confident cast.

This I behold or dreamed it in a dream . . .

It seemed like such a massive structure—fine, stately portals; entering were a group of laughing, singing voices.

The tune changed, however, as hazing took place and college life assumed formality at the Freshman Reception. But those were happy, happy days—the Social Centers were pools of recreation. The Student Center featured the Levin girls in "Levin style." Then Interclass Sing—song history was made with our version of "S. T. C." to the tune of "Three Blind Mice," with Albert Rydzynski's broken-down accompaniment. So—we hurried on—overwhelmed with Christmas traditions, intensified at exams, amused at Stunt Nite and with anticipation of Moving-Up Day.

What is happening to these little timid folk? Sections 3 and 4 steal prizes at Stunt Nite. Raiken and McCoy are featured as Pete and Gus, and Beri Craig sets her reputation as a "cute lil' secretary." Remember Charlie Campbell appearing at school one day in a blue uniform? And, of course, the campus glamour boys of those days—Sid Morgan and Dan McNerney. Norman Galebo came through with the White Rose of Sigma Tau. Under the leadership of Tommy Smith we proved that this Class of '41 had possibilities.

Not to be outwitted by the former Junior Class, this group set out to break all preceding records. We

STATELY



SENIORS



junior counselled with more advice, we sang with more volume, we danced with more swing, we taught with more proficiency, we played with more sport and we dramatized with more feeling. In this dilemma of activity, there arose notable personalities—we can't forget Charlie "the organizer" Turcott, Opal "sing-mistress" Oelkers, David "chair-prom" Capriello, Secretary Mayer, Mermaid Duthie, Cheer-leader Skip Sommers, Class-conscious Cochern, and the Harmony girls, Winnie Jenner and Marg McCullor. The Aquacade boys, Tierney and Rowley, put State on the Waterway. Manager Beal would qualify as a fireman, he's a veteran "revivor," but the draft comes first. Hold me back, girls, that handsome Greek god is Joe Romano. He plays soccer, too. Another who kicks the ball around is "Cutie" Potter. Living up to the sentiments that Exton and Schlotzer so neatly portrayed, Cupid shot (not a chocolate arrow, either) at Peg McDonough and Bob Griffin. The lovebug also bit Dave Cownie and Joy Brown. Betty Anne Seibert and Ann Earl go on ahead,—haven't you noticed those tricky berets they wear? Don't look now, but that walking linguist is Jack Murphy. Ruth Albright came through on ye ole Charity Drive. When it came time to "test your knowledge, it doesn't matter, anyway," for the State inquiry, the quiz kids, Gurvitz and Simon, topped off high honors. And then, not to be out-done by the masculine

line, Mary Taylor took the award for excellency in practice-teaching. The Eighteenth Century drawing room was adorned more graciously by Queen Norma Williams. My, my, we certainly have the talent, but now what are they doing?

People dash up to the Bureau, they haunt the library, they frequent the museums and galleries, they look worried and terrified, the girls are losing weight, and the boys haven't slept in weeks. The moment of anxiety and then—a C! Remember practice-teaching? For the few on campus, Cooke, whose middle initial should be "A", cynical Peck, and man-of-the-hour Coughlin, fight to uphold the affirmative side of the question. At the rostrum, Don Donley, the erstwhile President of Student Council, referees. Sections 3 and 4 satirize the new restrictions on assemblies. Joan Tarrant puts on a drive to raise the Joint Charities quota. Stage-door Johnnies Weigand, Sion, Strub, Kaminska, and Kirch prove the auctioneer's report that, with men who know, it's 2 to 1. The personalities of Charlie McCarthy and Bertha Dembowski cannot be omitted from this annual—they have contributed their all to our class. And then, the colossal event of the year—the Senior Ball conducted successfully by Ball.

As you read the closing chapter of this history you will find that the Class of '41 has carried on the same traditions, has had the same joyful and sad experiences as any class before, but to us it holds sacred memories that we will treasure always.



THELMA ABEL
Buffalo, New York
B.S. in Education



FRANCES ALBERTS
Rochester, New York
B.S. in Education



RUTH ALBRIGHT
Kenmore, New York
B.S. in Home Economics



CHARLES AMBELLAN
Buffalo, New York
B.S. in Industrial Arts



EDICE ANDERSON
Jamestown, New York
B.S. in Home Economics



SALLY ANDERSON
Buffalo, New York
B.S. in Education



EMMA ANNALETT
Dunkirk, New York
B.S. in Education



FLORENCE ARMITAGE
Homer, New York
B.S. in Education

C. WESLEY AUSTIN
Kenmore, New York
B.S. in Industrial Arts

ROSEMARY AVERY
Lackawanna, New York
B.S. in Education

IRENE BAKER
Jamestown, New York
B.S. in Education

EVA BALDWIN
Buffalo, New York
B.S. in Home Economics

HAROLD BEAL
Palmyra, New York
B.S. in Education

LUCILLE BEARDSLEY
Buffalo, New York
B.S. in Education

RUTH BECK
Buffalo, New York
B.S. in Education

MARGARET BEKNAP
Johnson City, New York
B.S. in Education



CHARLES BALL
Peekskill, New York
B.S. in Industrial Arts

A. MARIE BARKER
Buffalo, New York
B.S. in Education

JOY BARKER
Buffalo, New York
B.S. in Education

RAMONA BARNES
Dunkirk, New York
B.S. in Education

MARJORIE BELL
Buffalo, New York
B.S. in Education

BETTE BELLRENG
Niagara Falls, New York
B.S. in Education

FLORENCE BERGTOLD
Buffalo, New York
B.S. in Home Economics

MIRIAM BEUTHER
Buffalo, New York
B.S. in Home Economics

ERNESTINE BOOROM
Interlaken, New York
B.S. in Education

ELEANOR KAY BRANT
Clinton, New York
B.S. in Home Economics

JOYCE BRINKEL
Buffalo, New York
B.S. in Education

ALBERTA BROWN
South Dayton, New York
B.S. in Home Economics

VERA BURKLEY
Buffalo, New York
B.S. in Education

EMILY MAY BUTLER
Castile, New York
B.S. in Education

EVELYN CAGE
Kenmore, New York
B.S. in Home Economics

GRACE CALKINS
Victor, New York
B.S. in Home Economics



ELIZABETH LOUISE BROWN
Prattsburg, New York
B.S. in Home Economics

JOYCE BROWN
Buffalo, New York
B.S. in Education

LILLIAN BUDDENLAGEN
Callicoon, New York
B.S. in Education

MARY BUCHNER
Scotia, New York
B.S. in Education

DAVID CAPPIELLO
Rochester, New York
B.S. in Industrial Arts

FRANCIS CAROTHERS
Kenmore, New York
B.S. in Home Economics

ARTHUR CARR
Sloan, New York
B.S. in Education

VERAL CASHMORE
Kenmore, New York
B.S. in Education

ALICE CHMURA
Buffalo, New York
B.S. in Education

PHILIP CHRISTNER
Pavilion, New York
B.S. in Education

JANE CIRRITO
Dunkirk, New York
B.S. in Education

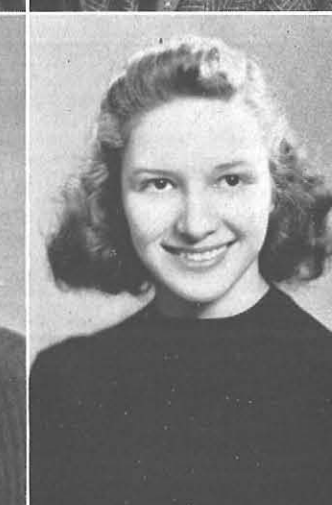
LORRAINE CLEARY
Niagara Falls, New York
B.S. in Education

EMILY CONAWAY
Delevan, New York
B.S. in Art Education

DAVID COOKE
Buffalo, New York
B.S. in Education

EDITH COOMBS
Canaseraga, New York
B.S. in Home Economics

RICHARD COUGHLIN
Buffalo, New York
B.S. in Education



GEORGE COCHERN
Kenmore, New York
B.S. in Art Education

VIRGINIA COHO
Buffalo, New York
B.S. in Home Economics

ELAINE COLE
Lyndonville, New York
B.S. in Home Economics

KATHERINE COLE
Rochester, New York
B.S. in Art Education

DAVID COWNIE
Buffalo, New York
B.S. in Education

BERYL CRAIG
Niagara Falls, New York
B.S. in Education

BETTY CRAWFORD
Williamsville, New York
B.S. in Art Education

PHYLLIS CREED
Lancaster, New York
B.S. in Education

CATHERINE CROGUSTON
Buffalo, New York
B.S. in Education

HARRY CURTIN
Buffalo, New York
B.S. in Industrial Arts

KAZMIRA CZERNIEJEWSKI
Lackawanna, New York
B.S. in Education

PAUL DAUCHER
Buffalo, New York
B.S. in Industrial Arts

ANTHONY DeSCIPIO
Binghamton, New York
B.S. in Industrial Arts

BETTIE DISTLER
Buffalo, New York
B.S. in Home Economics

JEANNE DODSON
Friendship, New York
B.S. in Home Economics

MARGARET DOLAN
Tonawanda, New York
B.S. in Education



NOREEN DAVEY
Keeseville, New York
B.S. in Education

HELEN DAY
Caledonia, New York
B.S. in Education

MARY DELANEY
Ovid, New York
B.S. in Education

BERTHA DEMBOWSKI
Rochester, New York
B.S. in Education

DONALD DONLEY
Buffalo, New York
B.S. in Education

MERIBETH DUNCKEL
Norwich, New York
B.S. in Home Economics

MARJORIE DUTHIE
Buffalo, New York
B.S. in Home Economics

MARY DWYER
Buffalo, New York
B.S. in Home Economics

ANN EARL
Tonawanda, New York
B.S. in Education

ALICE EATON
West Falls, New York
B.S. in Education

BEATRICE EBLING
Buffalo, New York
B.S. in Art Education

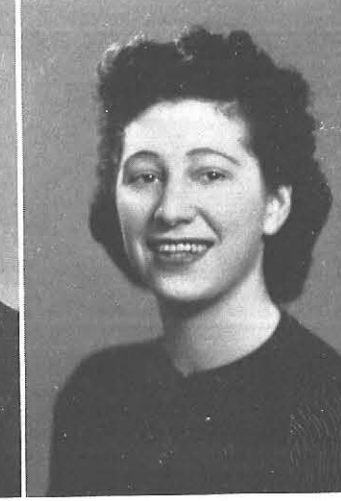
FRANCES EPSTEIN
Buffalo, New York
B.S. in Education

HELEN FORPAHL
Buffalo, New York
B.S. in Art Education

RUTH FOSTER
Akron, New York
B.S. in Art Education

MELROSE FRANKLIN
Belfast, New York
B.S. in Home Economics

BERNICE FRANKS
Buffalo, New York
B.S. in Home Economics



MARGARET ESCHNER
Buffalo, New York
B.S. in Art Education

JANE EVANS
Buffalo, New York
B.S. in Education

WILLIAM EXTON
Palmyra, New York
B.S. in Art Education

LINDSAY FARNAN
Lackawanna, New York
B.S. in Industrial Arts

NORMAN GALEMBO
Buffalo, New York
B.S. in Education

BERNARD GLASER
Buffalo, New York
B.S. in Industrial Arts

EDNA GORDON
Buffalo, New York
B.S. in Education

MARJORIE GOTTLIEB
Ebenezer, New York
B.S. in Education

1941

ANNE GOULD
Cassadaga, New York
B.S. in Home Economics



LEON GRADER
Buffalo, New York
B.S. in Education



MARY GRAHAM
Buffalo, New York
B.S. in Education



CHARLES GREMKE
Buffalo, New York
B.S. in Education



NORMA GRESSELL
Buffalo, New York
B.S. in Art Education



ROBERT GRIFFIN
Buffalo, New York
B.S. in Education



INEZ GRODS
Buffalo, New York
B.S. in Education

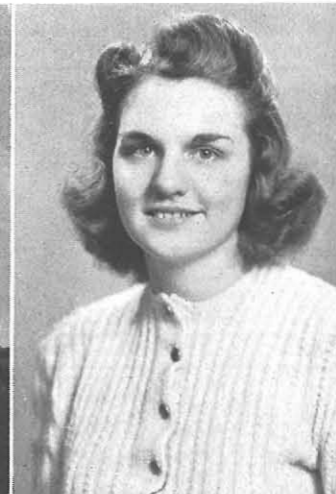


MILTON GURVITZ
Buffalo, New York
B.S. in Education

MARJORIE HAFFA
Holland, New York
B.S. in Home Economics



ALBERTA HAMISTER
Kenmore, New York
B.S. in Education



GERALDINE HARMON
Bronxville, New York
B.S. in Home Economics



STEPHEN HARRISON
Buffalo, New York
B.S. in Industrial Arts



HUGH HASLETT
Pearl River, New York
B.S. in Industrial Arts



ETHEL HELLEMS
Buffalo, New York
B.S. in Home Economics



CLARA HELLEN
Buffalo, New York
B.S. in Education



GERTRUDE HELMER
Buffalo, New York
B.S. in Education

WARREN HELWIG
Tonawanda, New York
B.S. in Industrial Arts

EVELYN HESS
Williamsville, New York
B.S. in Education

GRACE HIMMELE
Buffalo, New York
B.S. in Education

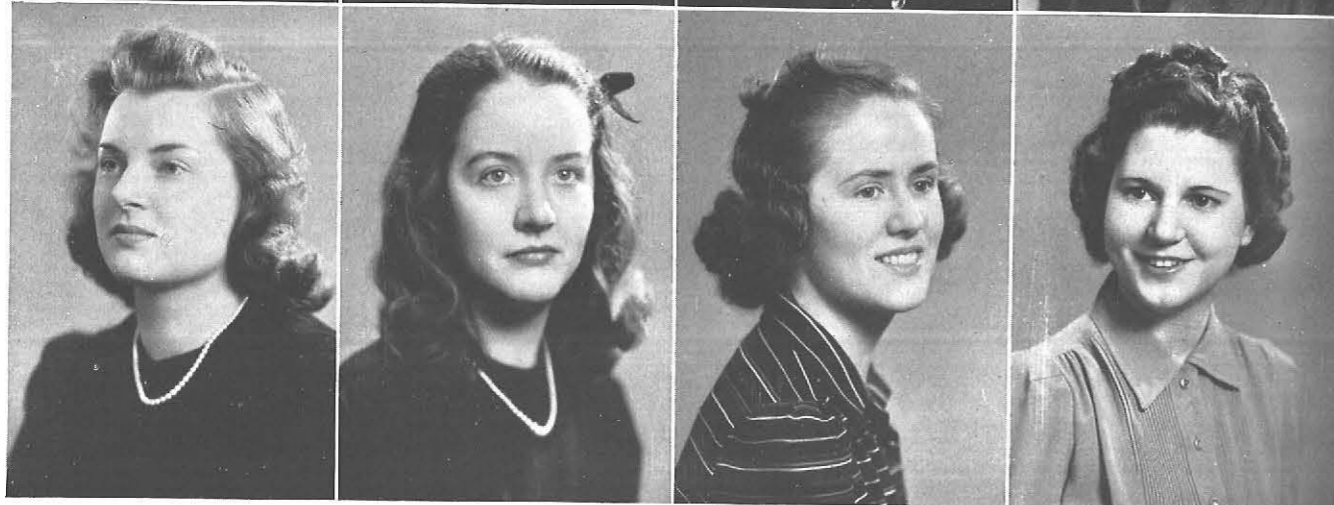
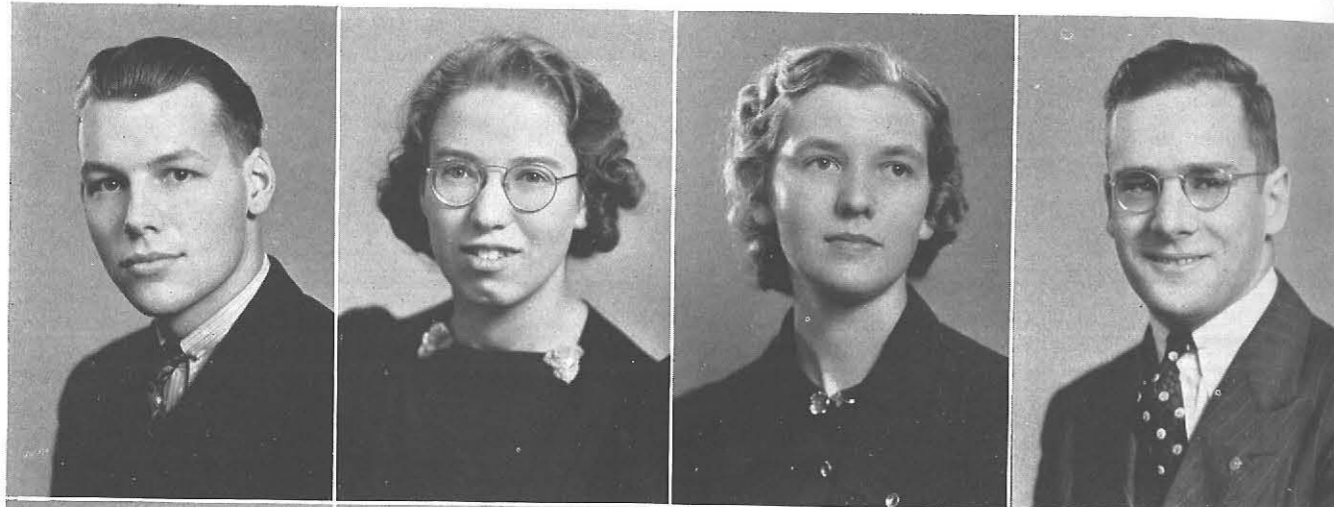
JAMES HOHENSEE
Buffalo, New York
B.S. in Industrial Arts

ROBERT ISENBERG
Oakfield, New York
B.S. in Education

WINIFRED JENNER
Buffalo, New York
B.S. in Education

HELEN JOHNSON
Lyndonville, New York
B.S. in Home Economics

Q. ELIZABETH JONES
Corfu, New York
B.S. in Education



PATRICIA HOLDREDGE
Syracuse, New York
B.S. in Home Economics

MURIEL HOLMES
Patchogue, New York
B.S. in Education

MARY HUSSEY
Seacliff, New York
B.S. in Home Economics

M. EVELYN INGHAM
Jamestown, New York
B.S. in Art Education

CLAYTON KAMINSKA
Buffalo, New York
B.S. in Industrial Arts

GRETCHEN KAUTZ
Olean, New York
B.S. in Education

PHYLLIS KENYON
Lyndonville, New York
B.S. in Home Economics

HARRIET KINGSLEY
Elmira, New York
B.S. in Art Education

1941

GEORGE KIRCH
Floral Park, New York
B.S. in Industrial Arts



HELEN KOWALSKI
Buffalo, New York
B.S. in Education



FRANCES KRAINZ
Gowanda, New York
B.S. in Education



NORMA KRAUSE
Kenmore, New York
B.S. in Education



RUTH KRIEMAN
Tonawanda, New York
B.S. in Education



MYRTLE KRULL
Buffalo, New York
B.S. in Home Economics



GEORGE KUHN
Buffalo, New York
B.S. in Industrial Arts



MARZETTA LATHAM
Elmira, New York
B.S. in Art Education

JOHN LESLIE
Buffalo, New York
B.S. in Industrial Arts



MURIEL LEVER
Niagara Falls, New York
B.S. in Home Economics



SYLVIA D. LEVIN
Buffalo, New York
B.S. in Education



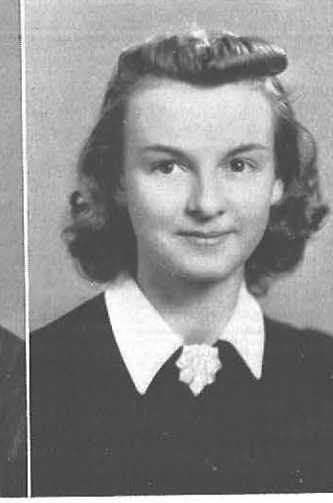
THELMA LIMBURG
Holland, New York
B.S. in Home Economics



PEARL LINDENBAUM
Niagara Falls, New York
B.S. in Education



EDWARD LIPOWICZ
Buffalo, New York
B.S. in Art Education



EVELYN LOCKWOOD
Buffalo, New York
B.S. in Education



MYRTLE LOTTES
Dunkirk, New York
B.S. in Education

MURIEL LYNDS
Lockport, New York
B.S. in Education

CHARLES McCARTHY
Buffalo, New York
B.S. in Education

TYRIL McCOY
Buffalo, New York
B.S. in Education

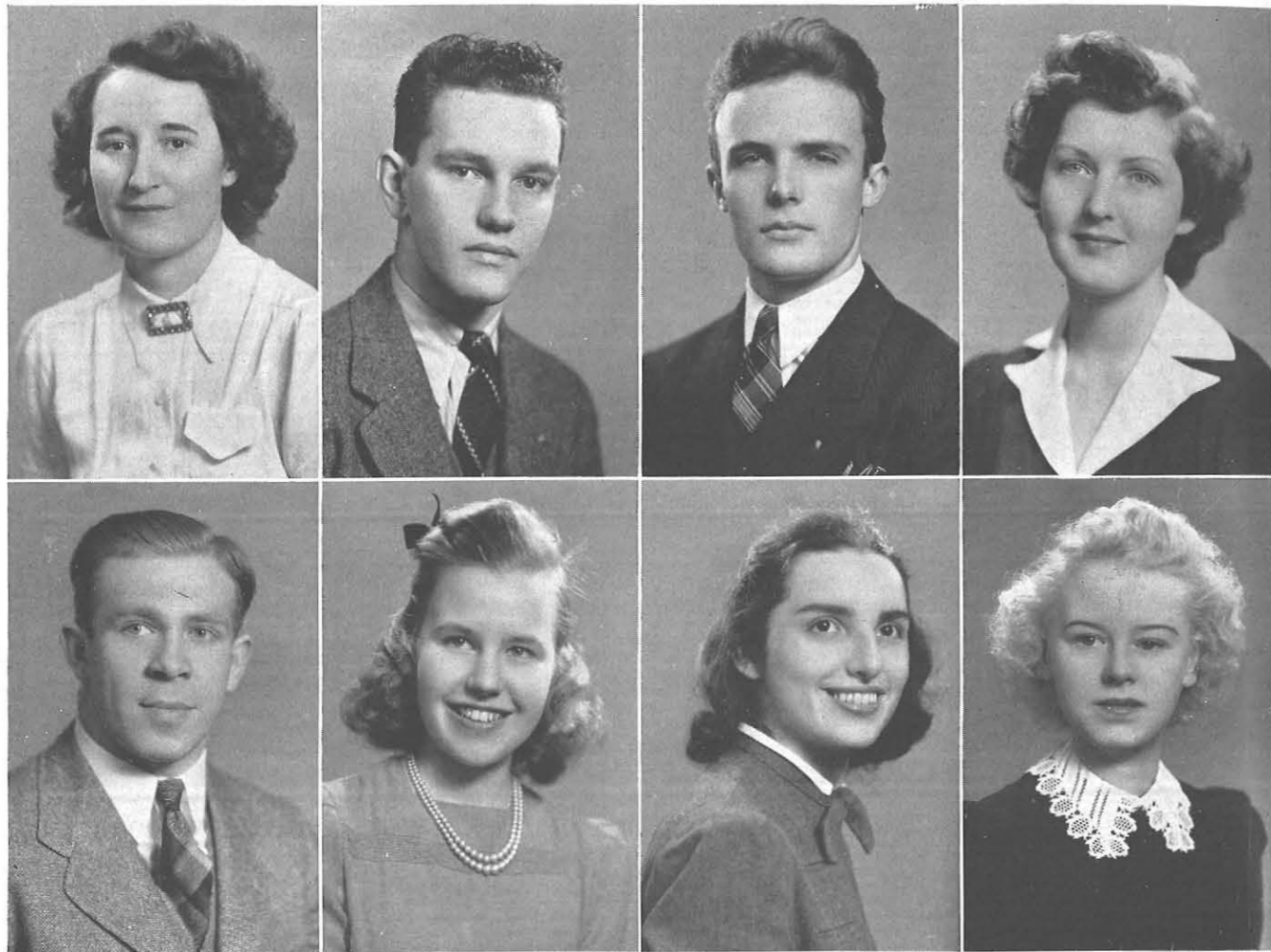
MARGARET McCULLOR
Lackawanna, New York
B.S. in Education

MARIE MAHL
Buffalo, New York
B.S. in Home Economics

HELEN MANDRY
New York Mills, New York
B.S. in Art Education

EMMA T. MORONE
Rochester, New York
B.S. in Education

EDITH MARTIN
Tonawanda, New York
B.S. in Education



J. HOWARD McCULLOUGH
Buffalo, New York
B.S. in Industrial Arts

MARGARET McDONOUGH
Buffalo, New York
B.S. in Education

CATHERINE McLELLAN
Batavia, New York
B.S. in Education

BEATRICE MACE
Lackawanna, New York
B.S. in Education



ELIZABETH MAUL
Buffalo, New York
B.S. in Home Economics

JEAN MAYER
Buffalo, New York
B.S. in Home Economics

BESSIE MENCER
Buffalo, New York
B.S. in Education

HELEN MERENA
Herkimer, New York
B.S. in Home Economics

1941

DOROTHY MICHERDZINSKI
Buffalo, New York
B.S. in Education



THELMA MILLER
Seneca Falls, New York
B.S. in Education



BEATRICE MINKEL
Buffalo, New York
B.S. in Education



SHIRLEY MOORE
Niagara Falls, New York
B.S. in Education



JOHN MURRAY
Oswego, New York
B.S. in Education



OLIVE NICHOLS
Cattaraugus, New York
B.S. in Education



RUTH NOBLE
Buffalo, New York
B.S. in Home Economics



MARGARET O'BRIEN
Sloan, New York
B.S. in Education



GLENN MORRISON
Franklinville, New York
B.S. in Education



HILDRED MULLER
Batavia, New York
B.S. in Education



JACK MURPHY
Buffalo, New York
B.S. in Education



RITA MURPHY
Lewiston, New York
B.S. in Education



EILEEN O'CONNOR
Buffalo, New York
B.S. in Education



MARY JANE OELKERS
North Tonawanda, New York
B.S. in Education



ALLEN OWEN
Buffalo, New York
B.S. in Industrial Arts



MILDRED PAGE
Binghamton, New York
B.S. in Education

GENE PAWLOWSKI
Buffalo, New York
B.S. in Education



ROBERT PECK
Buffalo, New York
B.S. in Education



ELIZABETH PELL
North Tarrytown, New York
B.S. in Art Education



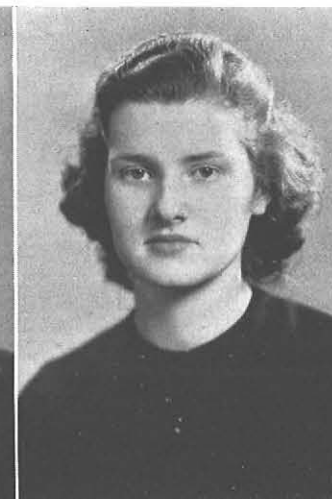
JUNE PERRY
Lockport, New York
B.S. in Home Economics



GLENDA POWELL
Moriah, New York
B.S. in Home Economics



MARION PRICE
Williamsville, New York
B.S. in Home Economics



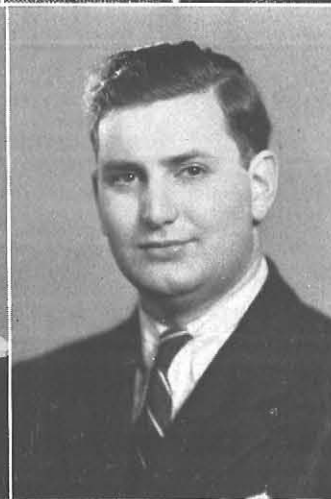
MORRIS RAIKEN
Buffalo, New York
B.S. in Education



EMMA RANG
Lockport, New York
B.S. in Education



JULIA PETO
Springville, New York
B.S. in Education



PATRICK PINTO
Buffalo, New York
B.S. in Industrial Arts



JEANNE PIPER
Lewiston, New York
B.S. in Education



ROBERT POTTER
Manchester, New York
B.S. in Industrial Arts



MARIBELL S. REID
Blasdell, N. Y.
B.S. in Home Economics



MARGUERITE REINHARD
Bay Shore, New York
B.S. in Home Economics



DOROTHEE REYNOLDS
Niagara Falls, New York
B.S. in Education



RUTH RICHARDS
Lockport, New York
B.S. in Education

MARGARET RICHARDSON
Hornell, New York
B.S. in Education



ROSEMARY RIORDAN
Buffalo, New York
B.S. in Education



JEAN ROBINSON
Syracuse, New York
B.S. in Education



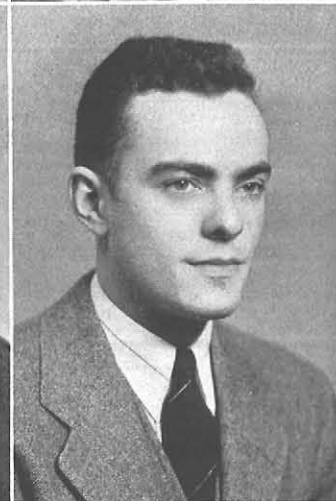
JOSEPH ROMANO
Rochester, New York
B.S. in Education



JAMES ROMBOUGH
Buffalo, New York
B.S. in Industrial Arts



MARJORIE ROSE
Tonawanda, New York
B.S. in Art Education



ROSS ROWLEY
Tonawanda, New York
B.S. in Education



ALBERT RYDZYNSKI
Buffalo, New York
B.S. in Education

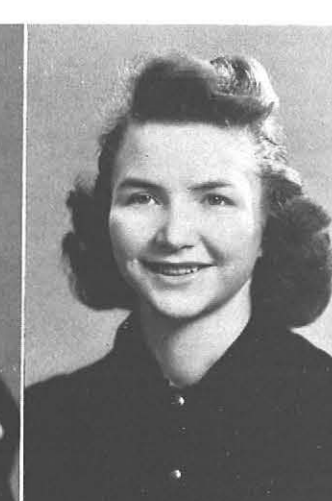
ELAINE SAAB
Buffalo, New York
B.S. in Education



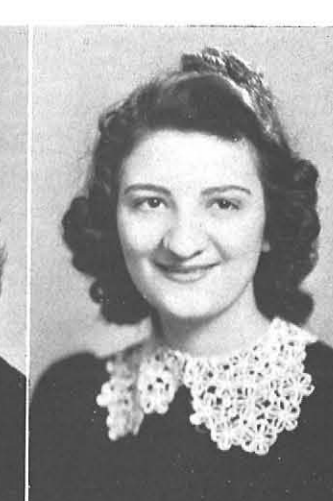
MARY ELIZABETH SAGE
Gowanda, New York
B.S. in Home Economics



RITA SAJECKE
Buffalo, New York
B.S. in Education



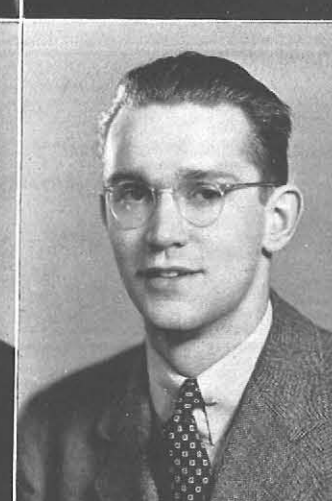
AMELIA SALVAGGIO
Rochester, New York
B.S. in Education



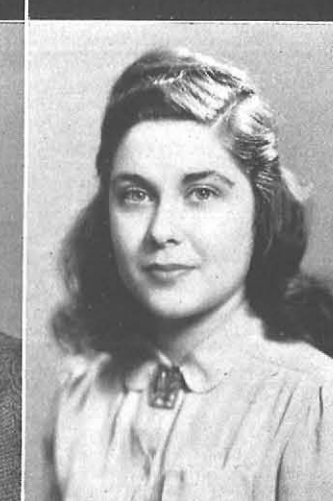
HELEN SANDECKI
Buffalo, New York
B.S. in Education



GORDON SANFORD
Corning, New York
B.S. in Education



ROBERT SCHAFER
Dunkirk, New York
B.S. in Industrial Arts



BETTY SCHLOTZER
Buffalo, New York
B.S. in Home Economics

EDWARD SCHNEIDER
Bovina Center, New York
B.S. in Education

BETTY SCHREINER
Buffalo, New York
B.S. in Home Economics

MARY KATHLEEN SCOTT
Niagara Falls, New York
B.S. in Education

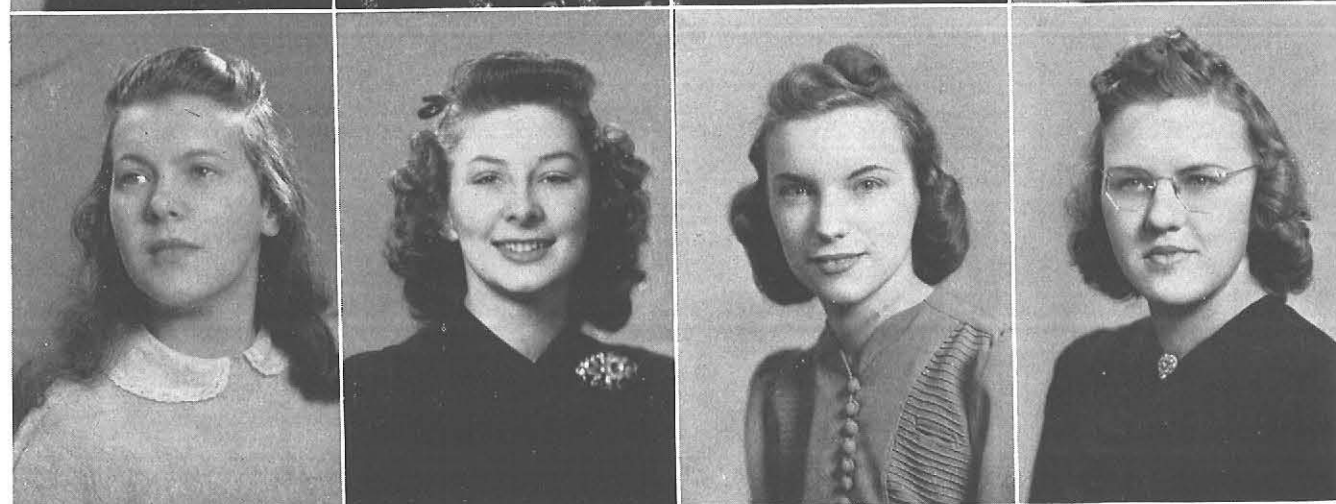
GLENDON SEAMAN
Ogdensburg, New York
B.S. in Industrial Arts

AARON SIMON
Buffalo, New York
B.S. in Education

WILLIAM SION
Hamburg, New York
B.S. in Industrial Arts

LOUISE SLOCUM
Warsaw, New York
B.S. in Education

BETTY JANE SMITH
Buffalo, New York
B.S. in Education



BETTY ANNE SEIBERT
Buffalo, New York
B.S. in Education

VIRGINIA SHANAHAN
Buffalo, New York
B.S. in Education

HELEN SHERWOOD
Buffalo, New York
B.S. in Art Education

IRENE SIEROSLAWSKI
Buffalo, New York
B.S. in Education

THOMAS SMITH
Buffalo, New York
B.S. in Industrial Arts

RACHEL SMYTH
Buffalo, New York
B.S. in Home Economics

SEYMOUR SOMMERS
Monticello, New York
B.S. in Industrial Arts

MARIAN SONTHEIM
Lyons, New York
B.S. in Education

1941

IRENE SPIEWAKOWSKA
Buffalo, New York
B.S. in Art Education

ROBERT SPRING
Lockport, New York
B.S. in Industrial Arts

BETTY STEGMAN
Buffalo, New York
B.S. in Education

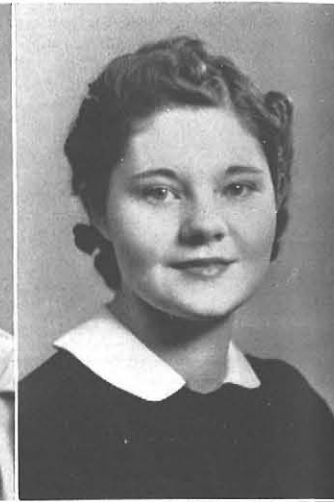
ALICE STIELOW
Medina, New York
B.S. in Education

ANGELO SUOZZI
Buffalo, New York
B.S. in Industrial Arts

JAMES SWEET
Buffalo, New York
B.S. in Education

RUTH TABER
Belfast, New York
B.S. in Home Economics

JOAN TARRANT
Buffalo, New York
B.S. in Education



M. MAY STRIPP
East Bethany, New York
B.S. in Education

VERNON STRUB
Floral Park, New York
B.S. in Industrial Arts

MARJORIE STUDER
Buffalo, New York
B.S. in Home Economics

MARY JANE SULLIVAN
Buffalo, New York
B.S. in Education

MARY JANET TAYLOR
Lockport, New York
B.S. in Education

MARGARET TEFPT
Springville, New York
B.S. in Education

THOMAS TIERNEY
Buffalo, New York
B.S. in Education

GERTRUDE TJEERDSMA
Lion, New York
B.S. in Education

RUTH TRAVIS
Riverhead, New York
B.S. in Education

GENEVIEVE TREICHLER
North Tonawanda, New York
B.S. in Education

MARY EDNA TRULAN
Seneca Falls, New York
B.S. in Art Education

CHARLES TURCOTT
Buffalo, New York
B.S. in Industrial Arts

GRACE WATROUS
Cortland, New York
B.S. in Education

CHARLES WEIGAND
Niagara Falls, New York
B.S. in Industrial Arts

FRANCES WEISSMAN
Buffalo, New York
B.S. in Art Education

BETTY JEAN WILLIAMS
Kenmore, New York
B.S. in Education



WILLIAM VANDAL
Lockport, New York
B.S. in Industrial Arts

JEAN VEDDER
Lockport, New York
B.S. in Education

GERTRUDE WAITE
Barker, New York
B.S. in Art Education

IDA JANE WANTSHOUSE
Westfield, New York
B.S. in Home Economics

ELBANOR WILLIAMS
Camden, New York
B.S. in Home Economics

NORMA WILLIAMS
Rome, New York
B.S. in Education

C. ROSS WILLSON
Derby, New York
B.S. in Education

GENEVIEVE WOODARD
Little Valley, New York
B.S. in Education

1941 Elms

JOHN WUJEK
Buffalo, New York
B.S. in Industrial Arts

BEATRICE YAW
Buffalo, New York
B.S. in Education

EDWARD ZIEGLER
Buffalo, New York
B.S. in Industrial Arts



ADDITIONAL GRADUATES

JENNIE V. CRANSTON

MIRIAM LLEWELYN

EDYTHE H. DURKEE

IRENE M. NORTON

EDNA A. HORSEY

MARJORIE C. RACKHAM

MURIEL ANN KIEFFER

HARRY ALAN SPEAR

EXTENSION GRADUATES

DOROTHY LILLIAN ALLGRIM

BEATRICE M. GEHRING

EDITH BRAND

ROSE GROSS

KATHERINE I. COLLINS

DOROTHEA ELIZABETH HARTMAN

DOROTHY MT. PLEASANT CROUSE

ROY C. HOPPER

LILLIAN CLARA DODD

JOHN JAMES MADEY

EUGENE E. ERB

DOROTHEA SEEGLER

VINCENT C. ESPERSEN

SUE L. TUTTLE

MAURICE E. FRIOT

ALICE M. WEINMAN

JANUARY GRADUATES

JOANNE BALDWIN	ADELINE K. McDONALD
EDITH VIRGINIA BERNER	HELEN J. MILLER
BEATRICE E. CATON	HARRY JOSEPH MURRAY
KATHLEEN C. CROLL	EDNA H. PAUL
HELEN BARBARA DOBSON	ALICE REN POYNTON
IRVING FUHRMAN	ESTHER REUSS
MILACENT M. GRIMES	JOSEPH SPAS
VIVIAN M. HENRY	EDWARD SZYMNASKI
GLADYS J. INGALSBE	JEAN LOUISE TILLOU
MARION A. JACKY	RUTH J. WILLIAMS
KATHLEEN LAPPIN	JOSEPH W. WITKA

GEORGE EDWARD WYATT

AUGUST GRADUATES

LAURA ALMSTEAD ANGELL	JULIA VIOLA CARPENTER
ELSIE C. ARNOLD	CONSTANCE E. CASEY
HELEN L. ARQUITT	ESTHER LUCINDA CASSELMAN
GLADYS M. BAILEY	ROSANNA M. CHAD
GROVER ALFRED BATES	GENET E. CHESTER
RUTHE M. BAXTER	LLEWELLYN F. CLAY
FLORENCE ADELAIDE BEDWORTH	NETA TERRILL COLLINS
WALTER GORDON BLISH	BENJAMIN F. COLUCCI
PAUL CHARLES BRADT	HELEN MARIE COOK
EDWARD AUGUSTUS BROWN, JR.	EDITH J. COTTON
WANDA V. BUCHINSKY	MILDRED ONINK DAHL
LENA Z. BUDDENHAGEN	DORIS DANIELSON
PAULINE KATHRYN BURKE	RUTH DENGLER
HARRIET BYRNES	BETTY GAVER DEYOT
MARION JULIA BYRNES	STANLEY C. DIETZ
ALEXANDER NORMAN CANNIOTO	DORIS WINIFRED EASTWOOD
HELEN JEAN CAPLIN	ELIZABETH EMILY EDWARDS

DORIS M. ERWIN	KATHRYN L. MAY
MARIAN C. FINCH	JULIA E. MILLER
D. NELSON FINCH	J. ROBERT MINKEL
SYLVIA WAGNER FINKELSTEIN	MARJORIE MAE MORRIS
MURIEL PATTISON FREHSEE	FRANCES C. O'DONOGHUE
ANNA S. FREITAS	A. MORTON RAYCH
HELEN M. GOULD	MALCOLM FRANCIS REDMORE
GERALD FRANK HALL	ERNEST L. RISLEY
MARGARET C. HARTNETT	VICTOR FRANCIS ROSTOHAR
MARY RUTH HAWLEY	MARIE ANNE ROY
RUTH W. HEIDEN	REGINA RYAN
FRANCIS EUGENE HENEHAN	GEORGE M. RYNDERS
MILDRED A. HOEHMAN	MARIE T. SCHWEMMER
MARIE JULIA HOFMANN	MILDRED GROVES SHEPHARD
ROBERT HENRY HUBBELL	FLORA SHULTZ
MARTHA MARGOT HUNT	LEONTINE FEATHERSTONE STARKS
ADAH MAE JOHNSON	LETA M. STEPHENS
LA MAR LOUISE JOHNSON	GERTRUDE FLECKSER STEVENS
ANNA M. KANE	HARRIETTE B. SWARTHOUT
CLARENCE H. KELLER	HAZEL J. SWEETAPPLE
MARJORIE ELIZABETH KINNEY	GLADYS E. TAYLOR
HERMAN G. KOHNKEN	HAZEL MILDRED TREICHLER
HAZEL A. LAMB	LOUISE M. TROVATO
CHARLOTTE MILDRED LEWIS	ALICE EDITH VAN ALLER
EARL WILLIAM LODER	MARGARET ANNE VILLARD
RUBY ELIZA LOWREY	FREDERICK ARTHUR WARREN
LUELLA LYNCH	OLIVE WEAVER
FLORENCE B. MCCAPES	HATTIE WETSEL
BERTHENA ANN MCCARTER	GEORGE WHITEHEAD
PORTER LACEY MALLORY	PAUL McCARTY WILLIAMS
WILLIAM HULETT MATSON	FLORENCE MARTHA WILBUR
	RUBY A. WOOLSTON

No more
At last we've reached our parting ways
Nothing for me . . . but bygone days
And so in the shadows of your glory,
ALMA MATER,
We promise to remember thee.

