

State University of New York College at Buffalo - Buffalo State University

Digital Commons at Buffalo State

Studio Arena Programs

Studio Arena

5-22-1930

Sun-Up

The Studio Theatre Players

The Studio School of the Theatre

Follow this and additional works at: <https://digitalcommons.buffalostate.edu/saprograms>

Recommended Citation

The Studio Theatre Players and The Studio School of the Theatre, "Sun-Up" (1930). *Studio Arena Programs*. 27.

<https://digitalcommons.buffalostate.edu/saprograms/27>

This Book is brought to you for free and open access by the Studio Arena at Digital Commons at Buffalo State. It has been accepted for inclusion in Studio Arena Programs by an authorized administrator of Digital Commons at Buffalo State. For more information, please contact digitalcommons@buffalostate.edu.

“SUN-UP”

By LULA VOLLMER

Is the Fifth Production, Season of 1929 - 1930

of

The Studio Theatre Players

545 Elmwood Avenue

Buffalo, N. Y.



Thursday, May 22nd, to Saturday, May 31st
(*Nine Performances*)

Curtain rises promptly at 8.30 o'clock

The Studio School of the Theatre

JANE M. KEELER, *Director*

545 Elmwood Avenue, Buffalo, N. Y.

Catalogue sent on request

Telephone, Tupper 0765

Entire New Collection—Now Ready

Summer Fashions

Dresses

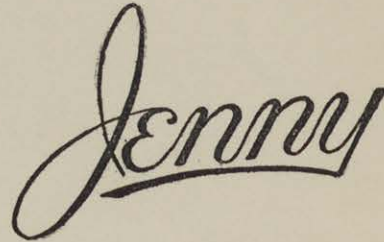
Silk Ensembles

Silk Coats

Pastel Sports Coats

Velvet Wraps

Millinery



HOTEL STATLER

UNTERECKER'S

Candy and Ice Cream

Store on Lower Floor This Building

Printed Chiffons and Crepes

Clever printed silks that enhance the smart style and individuality of each dress

COATS—*Dressy and Sports Models for those who seek the exclusive*

The Katherine Thiell Shoppe

New Fashions at Moderate Cost

45 Irving Place, Between Allen and North Streets

“SUN-UP”

By LULA VOLLMER

CAST OF CHARACTERS

Widow Cagle	Nanette Lancaster
Pap Todd	Sherman Enoch
Emmy	Virginia Butler
Bud	Claude Daniel
Sheriff Weeks	Clifford Jones
Rufe Cagle	J. C. Lindley
Preacher	Merton Wilner
The Stranger	Elliott Berger
Bob	Edward Brady

Produced by permission of Longmans, Green and Company

SCENES

ACT I. Interior Widow Cagle's Cabin. Noonday, June 5, 1917.

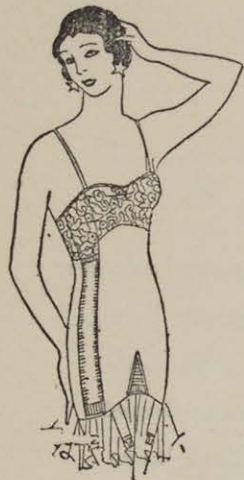
ACT II. Same. Late Afternoon, the following September.

ACT III. Scene 1: Same. Midnight, the following February.

Scene 2: The same. A few hours later, at dawn.

The location of this play is in the mountains of Western North Carolina, near the city of Asheville.

We Specialize in Lingerie Trousseaux
French Foundations



For Feminine Lines

French corsets and corselettes designed and made in Paris exclusively for the Thiell shop. Each garment a perfect foundation for the newest frock.

From \$8.75 up

Special Purchase of Silk Lingerie

French handmade fitted step-ins and chemises daintely embroidered . . . also fitted Princess slips.

From \$7.75 up

M. E. Thiell, Inc.

293-295 Delaware Avenue

Youthful Styles
Exclusively
 in
Frocks, Coats, Suits
 at



Moderate Prices Always

William H. Prentice, Inc.

Interior Decorators

472 Franklin Street

Tupper 0538

S. Spencer
CHOICE MEATS
Poultry

265 WEST UTICA STREET
 At Elmwood Ave.

We deliver

THE DRAMATIC EVENT
OF 1930

The Passion Play at Oberammergau.
 Travel independently or join our group sailing in July via the Mediterranean.
 Steamship reservations at tariff rates.
 No service charge.

Gertrude Werner Travel Service

916 Delaware Ave.

Tupper 8572

TRUSTEES

Mr. Walter P. Cooke Mr. Lars S. Potter Mr. C. Pascal Franchot

The sixth production, Season 1929-1930,
 will be a Program of One-Act Plays

Our members are urged to patronize the advertisers in this program

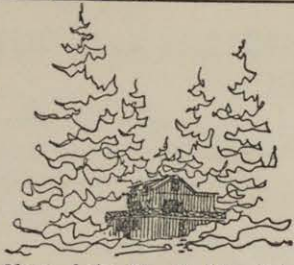
Mae E. Sparling
 Models from Henri Bendel
 545 Elmwood Avenue

TREASURE ISLAND SHOP

70-72-74 ALLEN STREET

At No. 70—Gowns and Jewelry
 At No. 72—Gifts and Decorative Objects
 At No. 74—English Antiques and Lamps

SUMMER
COURSE
IN
MUSIC
THEORY
AT



Camp Twenty Pines, Lake Placid, Adirondacks
Offered by KATHRYN McCARTHY
545 Elmwood Ave., Buffalo, N. Y.
Lake Placid Club, Essex County, N. Y.

Fill out an application form
for membership in

The Studio Theatre Players

Membership drive
May 26-June 10

"Exclusive, but not Expensive"

The Suzanne Shoppe, Inc.

Dresses, Millinery and Hosiery

471 Elmwood Avenue
Phone, Tupper 8691

**Action, Expression, and Pictorial
Quality Combined**

make our

Garden Portraits of Kiddies

most unusual as well as beautiful

The famous Beidler-Viken Twin Camera
has no equal when employed in the
art of child photography and is
used exclusively by

Underwood & Underwood

581 Delaware Ave. Tupper 1315

Amy Corey Fisher

Teacher of Piano and Harmony

Buffalo Seminary

THE PAULL STUDIOS

INCORPORATED

581 Delaware Avenue

Tupper 2158

Draperies :- Walls :- Furniture
Rugs :- Lamps
Antiques

Remodeling of Interiors

Alice M. Hooker
Elise L. Bradford Louis T. Metz

Tupper 1492 After 6 P.M. Riv. 5235

C. E. Jameson & Son

PRINTING

AND

ENGRAVING

288 Rhode Island Street

Expert advice in all printing requirements

The May-Ro Galleries, Inc.

65 ALLEN STREET

Imports

MIRRORS FRAMING
PICTURES GIFTS

The Savoy Shop

224 SUMMER STREET

announces a removal sale of all
**Antiques, Novelties,
Linens and Bags**

Reduced from 20% to 50%

STAFF

Jane M. Keeler, *Director*

Sheldon K. Viele, *Art Director*

Frances Tilly, *Speech Instructor*

Martha Gallagher, *Secretary*

Florence Reid-Rix, *Stage Manager*

Margaret Sossaman, *Assistant Stage Manager*

Neville Hoefler, Harrington Woodworth, Sherman Jewett,
Stage Assistants

Marie P. Hill and Janet Wattles, *Publicity*

Margaret Sossaman, *Advertising*

Otto J. Gaul, *Photographer*

Furniture
Lamps

Wallpaper
Fabrics

Arthur Kowalski

Interior Decorations

224 Summer St.

Paintings
Ceramics

Rugs
Novelties

Bimini Book Service, Inc.

532 ELMWOOD AVE.

**Books to Borrow
Books to Buy**

HELEN FALCONER, Open till 10 P. M.
President Tupper 1119

For the Ultimate in Modern Apartments

we cordially invite inspection of

Twelve-Ninety Delaware Apartments

For immediate occupancy—Two-, three-, four-, and five-room apartments

The five-room apartments consist of kitchen, dining room,
living room, two bedrooms and two bathrooms

Rental Office on Premises

Open Daily and Sunday

Elliott Apartments Linwood at Barker
Nine-Sixteen Delaware Apartments Delaware at Bryant
Mayflower Apartments Linwood at Summer

Built under the LASSER-PREYER PLAN

Fourth Season

Studio Theatre Players

Membership - Ten Dollars

=====
Mrs. James A. Gardner

Chairman of Membership Drive
=====

Membership Drive

Opens Monday, May 26 :-: Closes Tuesday, June 10
