

State University of New York College at Buffalo - Buffalo State University

## Digital Commons at Buffalo State

---

Elms, Student Yearbooks

Buffalo State Archives: History of the Institution

---

1-5-1931

### The Elms 1931

Buffalo State College

Follow this and additional works at: <https://digitalcommons.buffalostate.edu/theelms>



Part of the [History Commons](#)

---

#### Recommended Citation

Buffalo State College, "The Elms 1931" (1931). *Elms, Student Yearbooks*. 20.  
<https://digitalcommons.buffalostate.edu/theelms/20>

This Book is brought to you for free and open access by the Buffalo State Archives: History of the Institution at Digital Commons at Buffalo State. It has been accepted for inclusion in Elms, Student Yearbooks by an authorized administrator of Digital Commons at Buffalo State. For more information, please contact [digitalcommons@buffalostate.edu](mailto:digitalcommons@buffalostate.edu).

*The*  
**ELMS**

NINETEEN  
THIRTY  
ONE





EX LIBRIS



COPYRIGHT 1931

---

*BERNARDINE WENDE*

EDITOR-IN-CHIEF

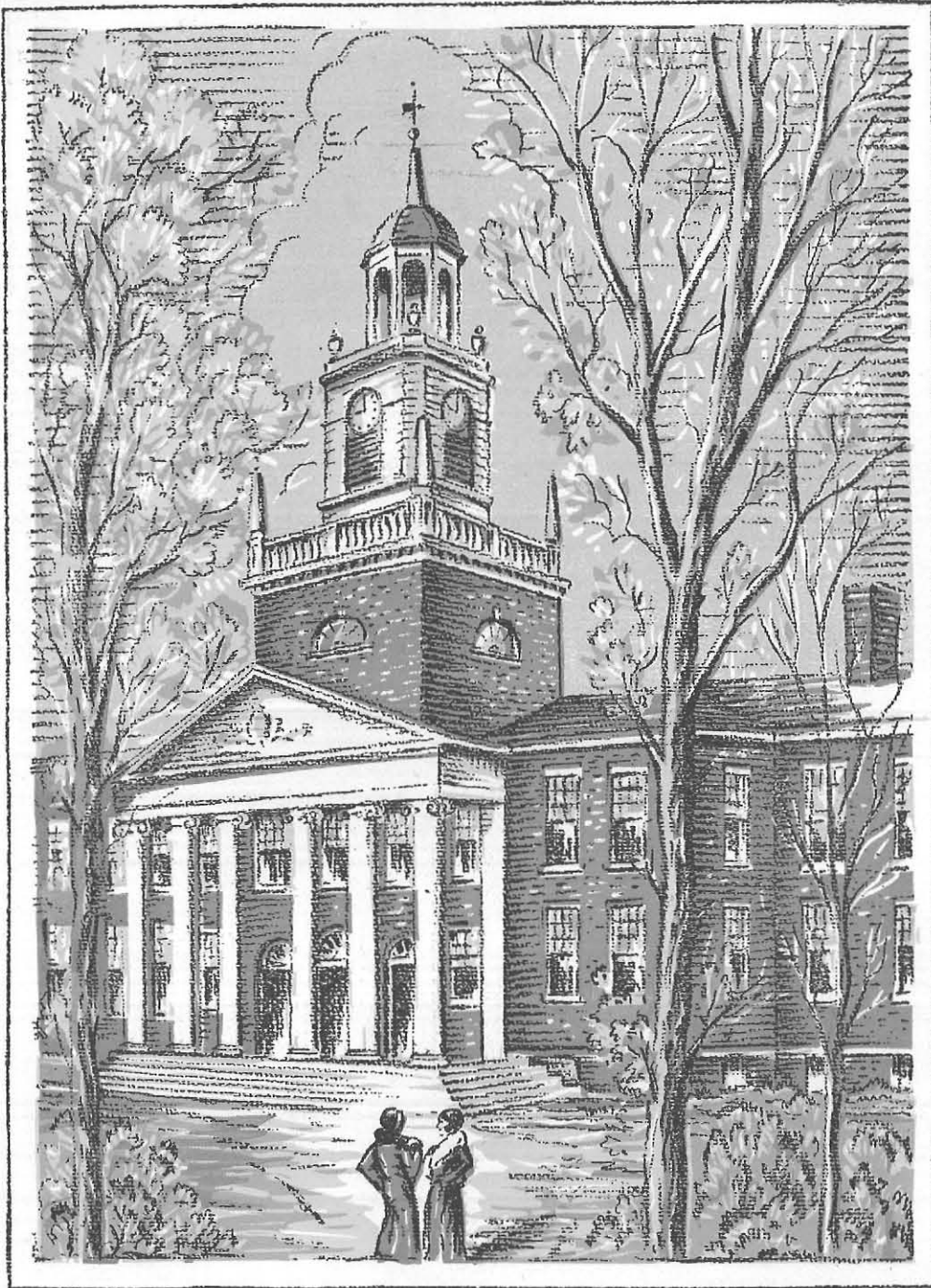
*MARIAN RILEY*

BUSINESS MANAGER



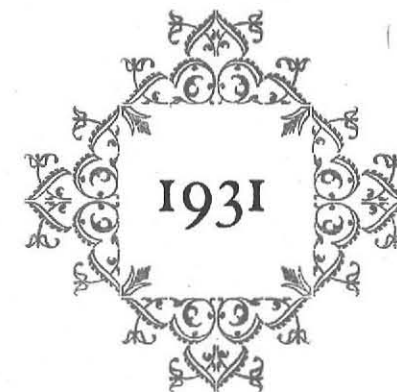
THE ELMS 1931

---



# The ELMS

The Year Book  
OF STATE TEACHERS COLLEGE




*Published for*  
THE CLASS OF NINETEEN THIRTY-ONE  
BUFFALO, NEW YORK



# F O R E W O R D



N THE TWENTIETH VOLUME OF THE ELMS, THE FIRST TO BE PUBLISHED FROM OUR NEW COLLEGE, THE STAFF OF 1931 HAS SOUGHT TO RECORD SOME OF THE HIGH HOPES AND SIGNIFICANT ACHIEVEMENTS OF THIS PERIOD, THE MOST IMPORTANT IN THE DEVELOPMENT OF THE INSTITUTION.



# D E D I C A T I O N



To  
*Our New College,*  
to the  
*realization of a dream,*  
we dedicate  
*this book*





---

---

**In Memoriam**

•  
LOUISE M. CASSETY

•  
CLAUDE FOSTER

•  
FRANKLIN H. SMITH

*"To live in the hearts of friends we  
leave behind is not to have died."*

---

---



**BOARD OF TRUSTEES**



EDWARD H. BUTLER . . . . . *President*

JOHN M. SATTERFIELD . . . . . *Vice-President*

A. GLENNI BARTHOLOMEW . . . . . *Secretary*

WILLIAM WARREN SMITH . . . . . *Treasurer*

MRS. CAROLINE TRIPP CLEMENT

WALTER PLATT COOKE

THOMAS B. LOCKWOOD

We extend our sincere appreciation to the members of our  
Local Board in acknowledgment of their hearty interest and  
efforts in behalf of our college.





C O N T E N T S



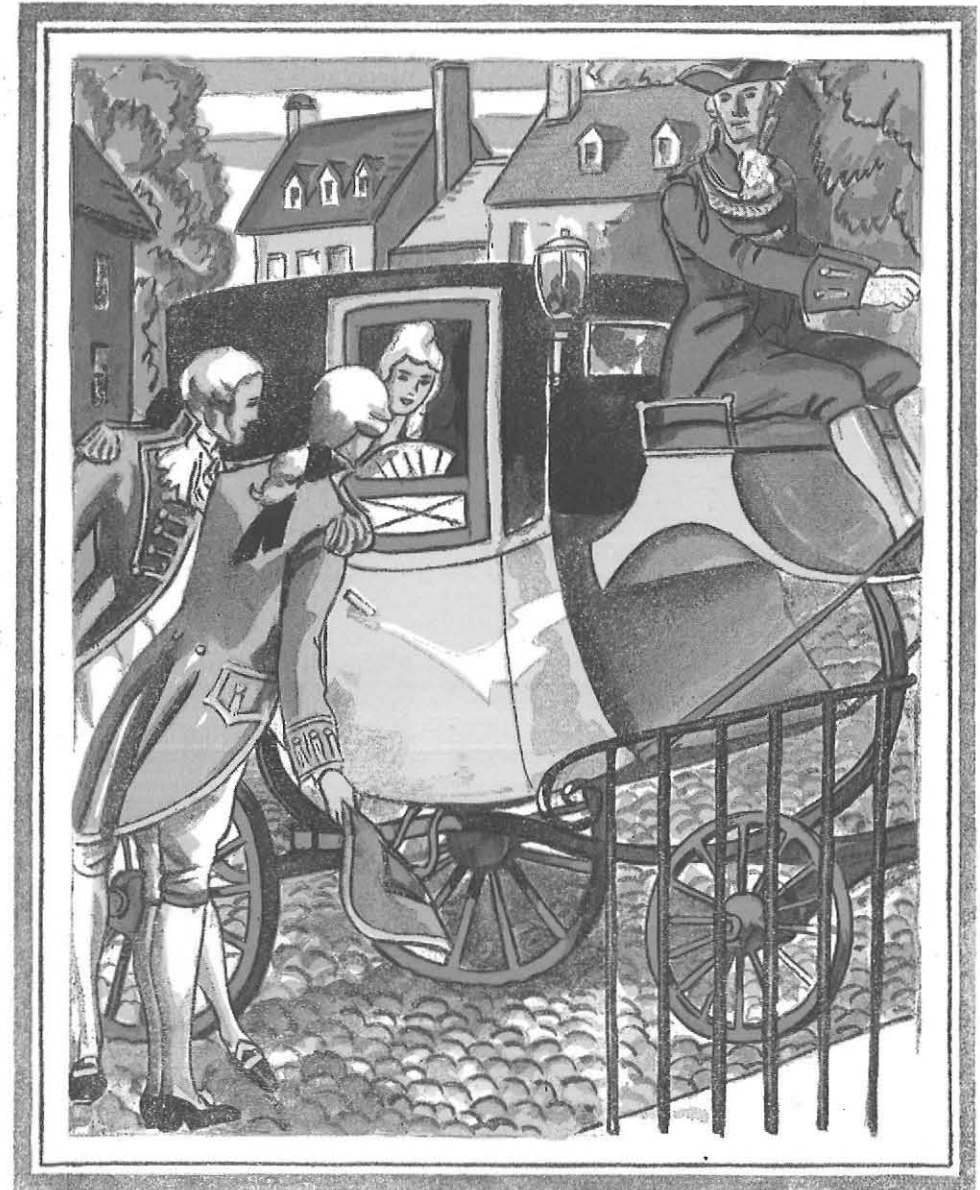
*OUR COLLEGE*

*ADMINISTRATION*

*CLASSES*

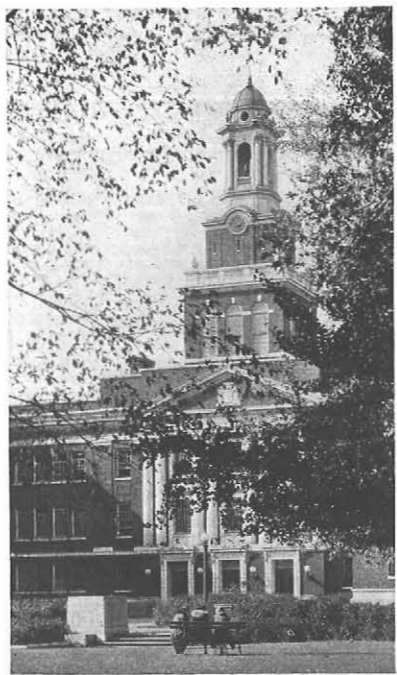
*ACTIVITIES*

*ADVERTISEMENTS*



OUR COLLEGE





## The Normal School 1866-1914

**I**N 1866 the Legislature of New York State authorized the establishment of four new Normal schools in various parts of the state. Spurred on by the magnanimous offer of Jesse Ketchum, a plot of ground north of the city in the block bounded by Jersey, Fourteenth, York and Thirteenth (Normal Avenue), was designated for the new Normal School. To carry through this project the financial co-operation of city, state and county was necessary.

A procession of Masons headed by the Mayor, the Common Council, and other officials, marched to the grounds for the elaborate cornerstone laying ceremony on April 15, 1869. John B. Skinner headed the first Board of Managers appointed in September, 1870. Other Board members were Francis H. Root, Honorable Grover Cleveland, William H. Greene, Albert H. Tracy, Dr. Thomas F. Rochester, Joseph Warren, Allen Potter, and Dr. Henry Lapp. Appointment to principalship of Dr. Henry B. Buckham, a graduate of the University of Vermont, was confirmed by the Board on January 21, 1871.

Seventy-five young women, eleven young men and a faculty of seventeen members were present on the opening day in September. On October 25, 1871, in the presence of distinguished guests and officials, the formal opening took place. The new edifice was constructed of brick, three stories high, and was claimed to possess all the necessary modern improvements. A total investment of one hundred thousand dollars was represented in the project, of which eighty thousand dollars was made available from bonds issued by Erie County and the City of Buffalo.

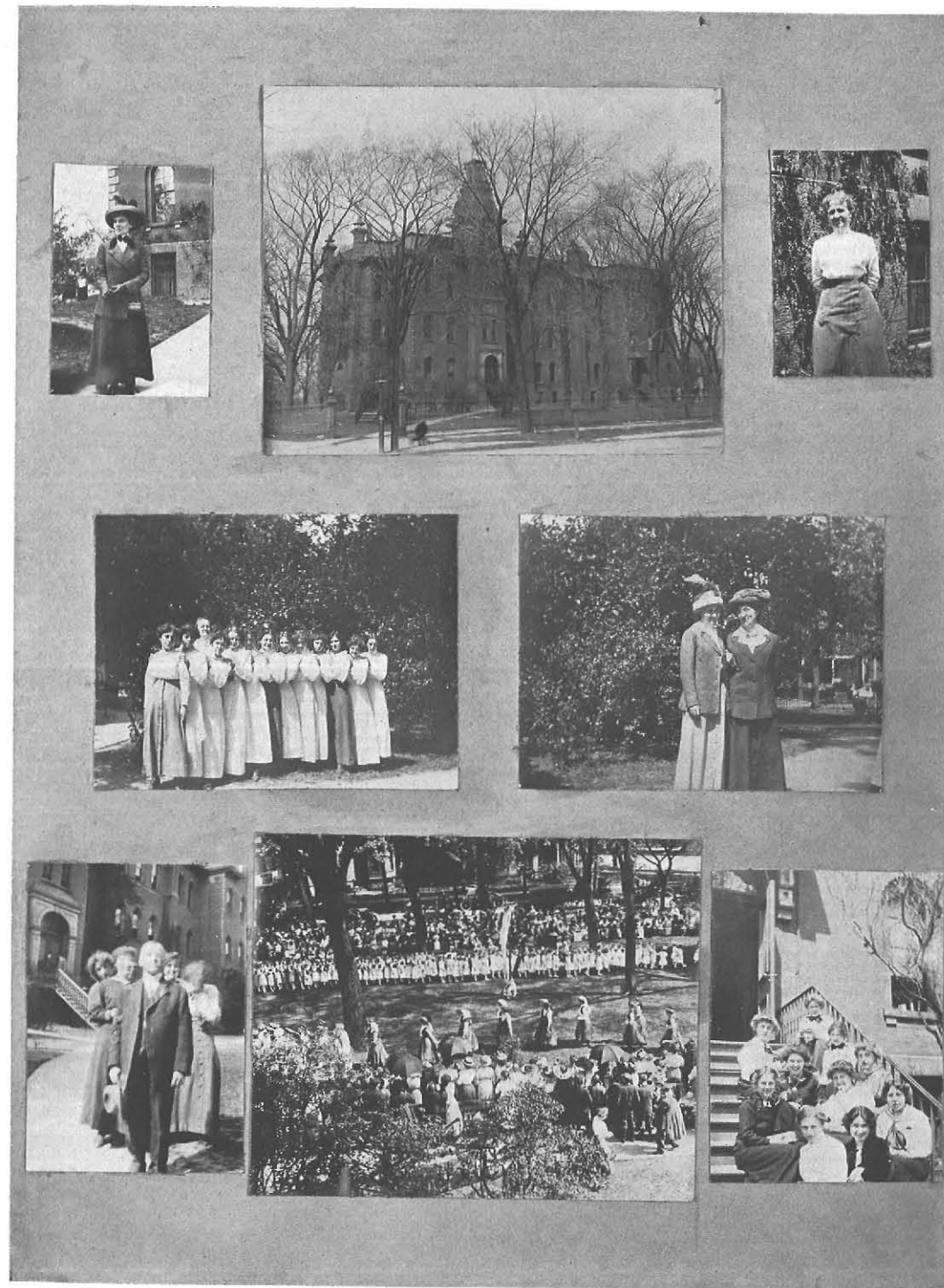
Following the resignation of Dr. Buckham, after successful work at the Normal School, Dr. James M. Cassety was appointed principal of the institution on June 14, 1886. Dr. Cassety was a graduate of Harvard University and his teaching experience included work at Albany, Cortland and Fredonia. Dr. Buckham headed a Normal school at Monmouth, Oregon, until it was closed, when he went with his family to California. He passed away in 1913.

In June, 1887, a Science building was started at the north end of the main building. Connected by the "Bridge of Sighs," this new building served as "gymnasium, Natural Science Department, and chemical experimentation."

The erection of the principal's residence, authorized by the legislature in 1889, was completed in 1894 at a cost of \$10,000. As a semi-private attempt the kindergarten was started in 1892. Dr. Daniel S. Upton, former principal of Technical High School, was appointed principal on July 30, 1909. He was a graduate of Olivet College and Cornell University. Dr. Cassety retired from active educational work upon his resignation.

The addition of a Household Arts and a Vocational department in 1910 found the old building wholly inadequate. After strenuous efforts by Edward H. Butler and Senator Henry W. Hill, plans for a new building were formally approved on March 6, 1912. The first publication of the school, *THE ELMS*, appeared in June, 1912, and the following year the *Record* appeared as a quarterly magazine.

Not until June 14, 1914, did the students bid farewell to the old building at a banquet and reunion.



## 1914-1930

The agitation for the erection of the second Normal School building, standing today at Jersey and Fourteenth Streets, was started by Edward H. Butler as early as 1902. A bill sponsored by the late Senator Henry W. Hill for the drawing of plans was signed by Governor Hughes on June 21, 1910. Due to the intricacies of legislative methods an appropriation was not available for starting the plan until March 6, 1912.

To continue work in the old structure during construction of the new, on the same plot of ground, wings were planned flanking the Science Building on two sides. Connecting these wings was the main facade of the building with a tower modeled after that of Independence Hall at Philadelphia. Back of this facade was the wing containing the gymnasium, auditorium and science rooms. A brief but impressive ceremony marked the laying of the cornerstone of the building on October 9, 1913. President Butler, of the Board of Managers, introduced the speakers of the day, and afterwards, in the presence of distinguished guests, faculty and students of the school, he laid the cornerstone at the entrance of the new structure.

The death of Mr. Edward H. Butler on March 9, 1914 was a great loss to the Normal School. He bequeathed a sum of five thousand dollars to the school for Library purposes. Mr. Robert Livingston Fryer succeeded Mr. Butler as president of the Board. In September, 1914, classes were started in the new building.

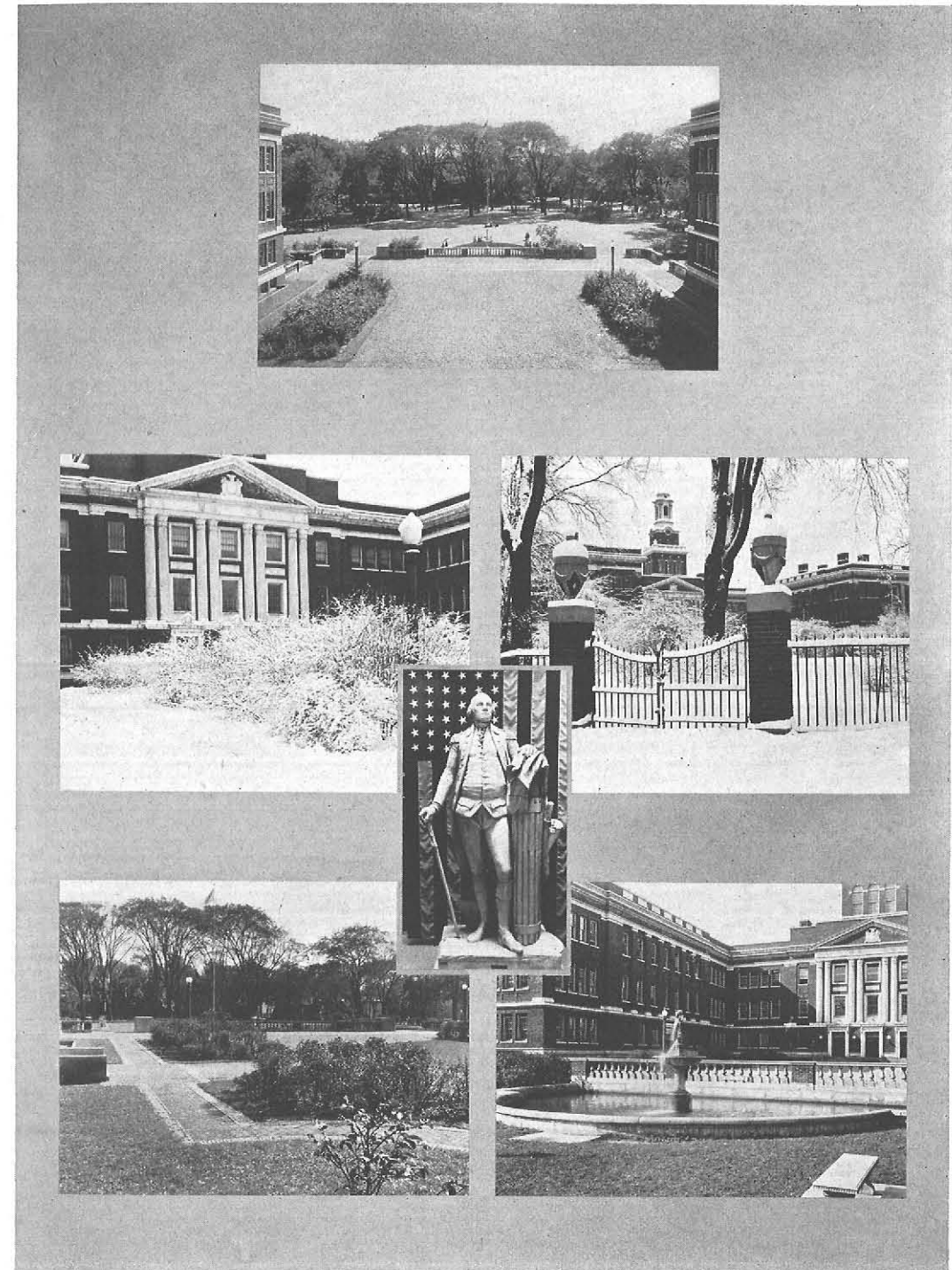
Mr. Robert Livingston Fryer passed away on October 15, 1915 and Edward H. Butler, Jr. became president of the Board. In memory of her husband, Mrs. Fryer presented the Tiffany Clock for the tower, and a bronze tablet to the School.

School 38 was affiliated with the Normal School in September, 1916, for additional practice teaching facilities. The first Summer Session was inaugurated the following year. During this Summer Session in 1918, Dr. Upton passed away suddenly on July 30.

On January 30, 1919, Harry Westcott Rockwell was formally appointed principal of the Normal School. Dr. Rockwell was a graduate of Brown and Columbia Universities, and came to the school following successful work at Pelham, New York. In March of that year came the double ceremony of dedication of the new building and installation of the new principal. The Board of Regents gave the Home Economics Department, in July, 1919, the privilege of offering a four year course with a degree of Bachelor of Science in Home Economics.

In September, 1920, the Vocational-Industrial Department was reorganized through the transfer of a similar department from Albany State College.

In June, 1922, the Normal School celebrated its fiftieth anniversary during commencement week, with appropriate ceremonies. The General Normal course was extended from two to three years' duration in September of that year. On April 25, 1925, the Board of Regents approved the establishment of an optional four year course for elementary and junior high school teachers leading to a degree of Bachelor of Science in Education. This important step forward was definitely authorized on June 24, 1926. With it came many important additions to the faculty.




The ELMS

  
of 1931

The first non-teaching registrar, Miss Isabel Houck, was appointed in 1925, and the position of Dean of Women created in January, 1926. Miss Catherine E. Reed began her work as Dean in September, 1926. Increased registration and overcrowded facilities made a larger plant and campus necessary as each year went by.

On May 27, 1927, in response to a request made by the Board of Managers, in a resolution on April 14, the State Board of Regents changed the name of the Buffalo State Normal School to that of State Teachers College at Buffalo. Credit for this change is due to the late Adelbert Moot, Vice-Chancellor of the Board of Regents. On March 9, 1928, the Legislature passed a bill giving the right to the legal title of New York State College for Teachers at Buffalo. This action gave the college the same Faculty classification and salary schedule as that of the Albany State Teachers College.

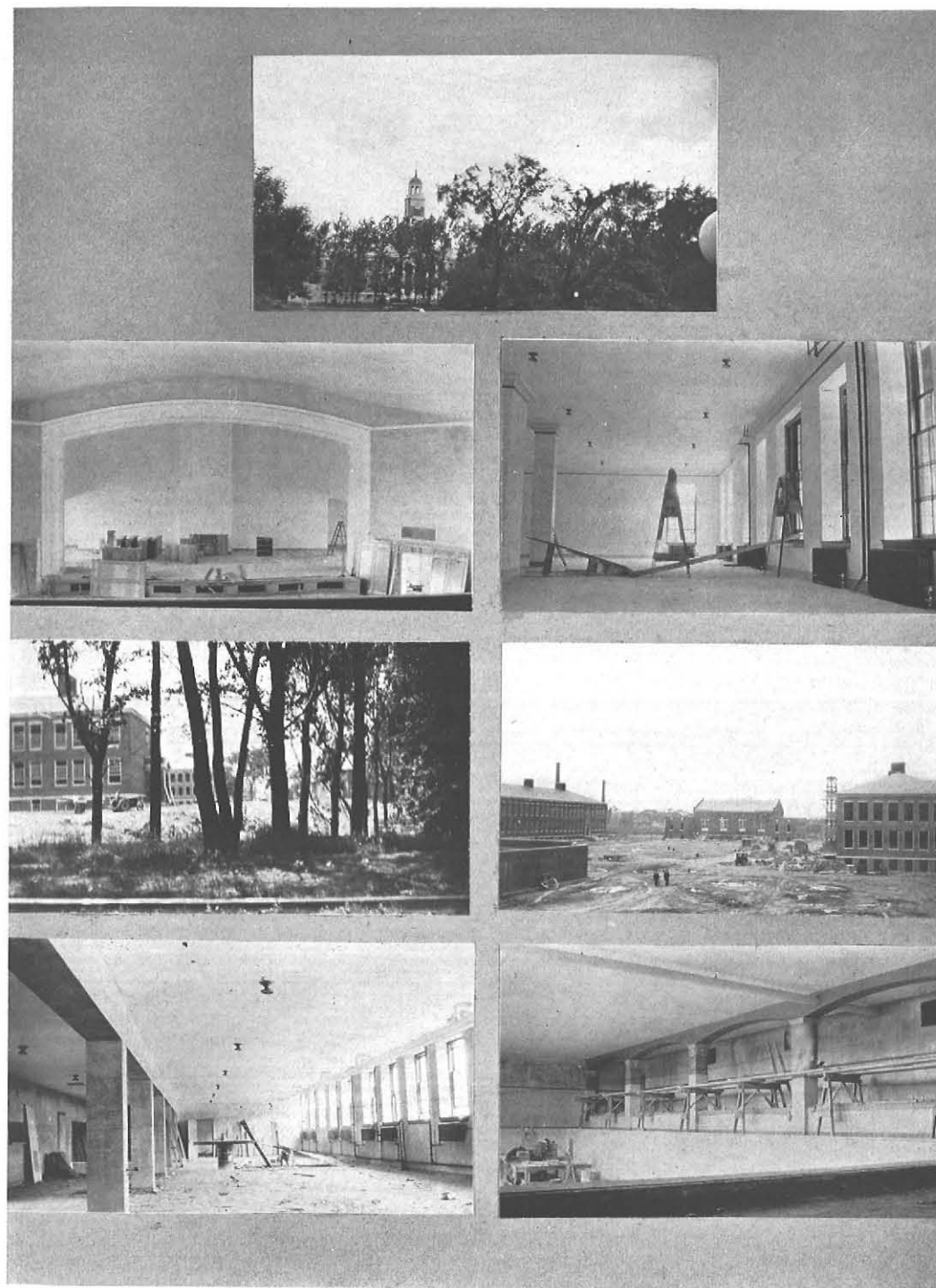
A college nurse was added to the staff in September, 1928. The Vocational-Industrial Department was put on a three year basis in the spring of 1929, and a four year course was planned. An auto mechanics and a general shop will come within two years. In July, 1929, the Board of Regents approved the transfer of the Art Departments from the Potsdam and Fredonia Normal Schools to the State Teachers College at Buffalo. The proximity of the new plant to the Albright Art Gallery and the Buffalo Art School made this change especially advisable.

In August, 1930, the School of Practice was taken over by the State, which thereafter undertook the paying of the salaries of the critics. With even higher standards for entrance, applications were so great in September, 1930, that tests for admission were again given. The new Art Department opened with twenty students at that time.

The expansion of the College from a registration of two hundred seventy-five in 1919 to one thousand, one hundred fifty in 1930 and a relative increase in the number of faculty, marks the amazing growth in the service of the College. A director of training and two associates, increased practice teaching facilities, a department for the training of elementary principals, two new salary schedules, recognition of the degree of the College by several of the larger universities, and the appointment of a Deans Committee are but a few other splendid developments that took place on the Jersey Street campus during this period.

Nearly all fraternities and sororities became nationalized following the collegiate ranking of the school. The American Association of Teachers Colleges also gave the College a grade A rating. State University scholarships were given to students registering at the College, as well as twenty-five vocational scholarships of one thousand dollars each.

On January 1, 1931, the College building was turned over to the City of Buffalo, to be used as the Grover Cleveland High School, with its opening scheduled for September, 1931.



## New Campus 1931

Greatly increased registration and overcrowded facilities suggested the advisability of a new plant for the College. In December 1926, Commissioner Frank C. Perkins proposed to the Council a plan looking toward the development of an educational center on the Buffalo State Hospital grounds. Finally after several proposals and changes, an agreement was reached between representatives of the city, and Governor Smith. The City of Buffalo was to take the Jersey and Fourteenth Street property while the State conveyed to the city, ninety acres on the State Hospital site. Seventy acres of the site was to be made available for use by the city for educational purposes, and twenty acres for a new State Teachers College. The city was to erect a new College at a cost not to exceed one million and a half dollars, and to move the reception building of the State Hospital.

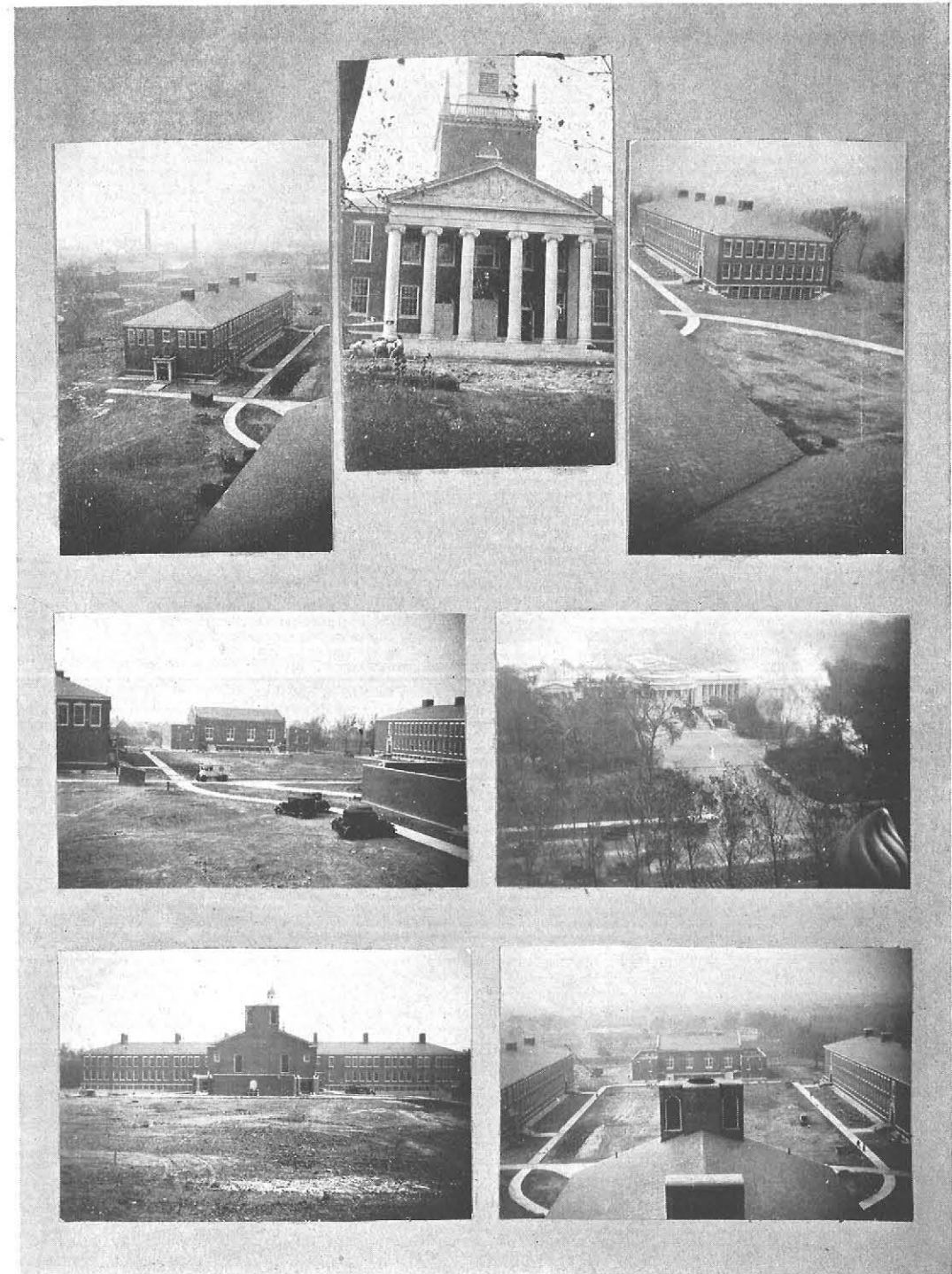
Following the approval of the Common Council and the Legislature, plans were drawn early in 1928. These plans visioned for Buffalo a splendid new College adjacent to the city's finest park and educational institutions. Four college buildings with a quadrangle were planned; namely, the main college building, vocational building, school of practice, and gymnasium. A president's residence and athletic field were also included in the development. The labors of Mayor Schwab, Governor Roosevelt, the late Henry W. Hill, Gregory U. Harmon and Edward H. Butler were important factors in this project.

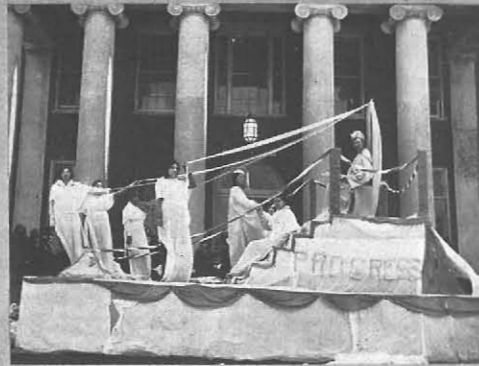
A simple program marked the ground-breaking ceremonies on November 7, 1928, while impressive services of a state and civic nature saw the laying of the cornerstone on October 9, 1929. Presided over by Dr. Rockwell, a history making ceremony took place in the unfinished auditorium in the presence of the Board of Managers, the Mayor and members of the Council of Buffalo, representatives of the State Educational Department and Board of Regents, state officials, and representatives of Buffalo educational institutions. Following the ceremony Edward H. Butler, using the same trowel which his father had employed in 1913, laid the cornerstone of the main building.

The graduating classes planted the first ivy on the new campus in June, 1930. In October 1930, an announcement was made of three gifts of chimes for the tower of the main building. The E bell was presented by the Class of 1930, the C bell by the ELMS staff, and the D bell by an anonymous donor in memory of three former principals. To these bells, a bell from the old campus, a gift of Mrs. Robert Livingston Fryer, was added to complete the set of chimes. The first event in the new college took place on November 10 when the Buffalo Symphony Society opened its concert season in the auditorium. Moving to the new campus started December 17, 1930. A parade of students from the old campus to the new and another impressive ceremony opened the College on January 12, 1931. Messages of congratulation were received from Governor Roosevelt and Commissioner Graves, and personal greetings came from many civic leaders.

Thus in its new setting, in the midst of splendid educational institutions, almost unlimited possibilities in cultural and recreational fields beckon the State Teachers College of Buffalo to a new day of development in elementary education which her eventful history of growth and service has shown in the past.

—HARRY S. DOUGLASS





PHOTOGRAPHS COURTESY BUFFALO EVENING NEWS



# ADMINISTRATION



DR. HARRY WESTCOTT ROCKWELL; A.B., A.M., Pd.D.

Committee of Deans



GEORGE BRADFORD NEUMANN  
B.A., M.A., PH.D.



CHARLES ARTHUR MESSNER  
B.A., M.A., PH.D.



CHARLES C. ROOT  
Pd.B., A.B., A.M., Pd.M.



DEAN CATHERINE E. REED, A.B., M.A.



Rosamond Olief Abate  
B.S.  
*Accompanist and  
Assistant Librarian*



C. B. Burke  
*Instructor in  
Woodworking*

Grace A. Allen  
B.S., M.A.  
*Assistant Director  
of Training*



Myrtle Viola Caudell  
B.S., M.A.  
*Director and Professor of  
Home Economics  
Education*

Gertrude M. Bacon  
B.S., M.A.  
*Professor of Elementary  
Education*



Luella Chapman  
*Instructor in Penmanship*

H. Arnold Bennett  
A.B., A.M.  
*Instructor in History*



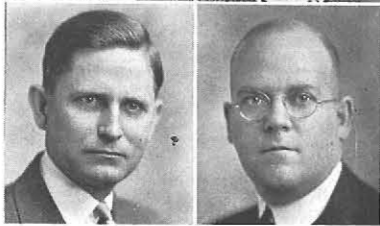
Marion A. Clark, A.B.  
*Secretary*

Charles B. Bradley, B.S.  
*Professor of Art  
Education*



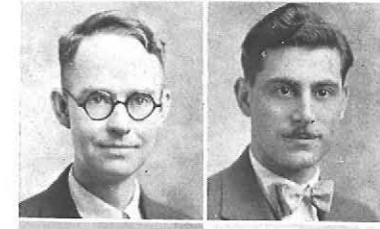
Mary C. Clark, R.N.  
*College Nurse*

Homer A. Bruce  
B.S., M.A.  
*Instructor in Education*



Stephen Clement  
A.B., A.M.  
*Professor of Education  
Director of Extension*

Earl Cranston  
A.B., B.D., M.A., Ph.D.  
*Professor of History*



John Fontana  
*Instructor in  
Machine Shop*

Marion Dana, B.S., M.A.  
*Instructor in  
Kindergarten—  
Primary Methods*



Raymond M. Fretz  
B.S., A.M.  
*Instructor in Science*

Jane L. DiAdario  
*Secretary*



Anna M. Gemmill  
B.S., M.A.  
*Instructor in  
Home Economics*

Winifred Drew  
B.S., M.A.  
*Instructor in Design*



Mabel B. Gilbert  
*Manager of Cafeteria*

Margaret Dupre, B.S.  
*Instructor in Science*



Mina S. Goossen, B.O.E.  
*Instructor in  
English and Dramatics*

Helen G. Englebreck  
A.B., M.A.  
*Instructor in History*



Andrew W. Grabau  
B.S.  
*Instructor in English  
and Psychology*

Kathryn S. Graham  
*Secretary*



George E. Huckins  
*Instructor in Printing*



Frances G. Hepinstall  
B.S.  
*Librarian*



Edna W. Hurd, B.S.  
*Instructor in Music*



Oscar Edward Hertzberg  
B.A., M.A., Ph.D.  
*Professor of Psychology*



Anne M. Hutzler  
*Secretary*



Carolyn Heyman  
*Instructor in Art Education*



Faye Keever, B.S., M.A.  
*Instructor in Clothing*



David R. Hodgin  
A.B., A.M.  
*Instructor in English*



Ida L. Kempke  
Pd.B., A.B., A.M.  
*Professor of English*



Ruth Elliott Houston  
B.A.  
*Professor of Health Education*



Ruth McLean, A.B.  
*Instructor in Art*



Mary Louise McMahon  
B.S.  
*Instructor in Music*



Chester A. Pugsley  
B.A., M.A.  
*Professor of Elementary School Administration*

Edward L. Morrice, B.S.  
*Instructor in Mechanics*



G. M. Quackenbush  
B.S., M.A.  
*Assistant Professor of Vocational Training*

Eileen Mulholland  
Ph.B., M.A.  
*Instructor in English*



Gertrude Roach, R.N.  
*Instructor in Health Education*

May C. Nye, A.B., M.A.  
*Instructor in Foods and Textiles*



Jennie Robson, Pd.B.  
*Instructor in Mathematics and Education*

Mildred Krier Patti  
*Secretary*



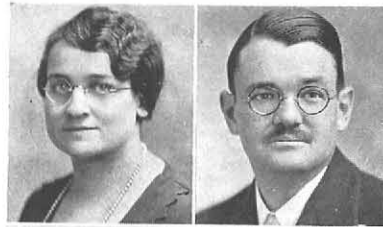
Winifred Salom, B.S.  
*Instructor in Health Education*

Irving C. Perkins, B.S.  
*Director and Professor of Vocational Education*



Alma M. Shugrue, A.B.  
*Instructor in Kindergarten—Primary Methods*

Mildred L. Sipp  
B.S., M.A.  
*Assistant Professor of  
Teacher Training*



Charles A. Vail, B.S., A.M.  
*Instructor in Science*



Ruth E. Speir  
*Assistant Professor  
of Music*



Grace Viele, B.L.  
*Assistant Librarian*



Harry J. Steel, M.A.  
*Director of Training and  
Professor of Education*



Walter B. Weber, B.S.  
*Instructor in Electricity*



Katheryne C. Thomas  
A.B., M.A.  
*Assistant Professor of  
Geography*



Anna Alford, B.A., M.A.  
*First Grade,  
School of Practice*



John Melvin Thurber  
A.B., Ph.D.  
*Professor of English*



Eleanor M. Gover, B.S.  
*Sixth Grade,  
School of Practice*



May C. Turner, B.S.  
*Instructor in Foods*



Mary L. Jamison, B.S.  
*Kindergarten,  
School of Practice*



Carl H. Kumpf, B.S.  
*Mathematics,  
School of Practice*



Marguerite Stockberger  
*History and Geography,  
School of Practice*



Mae O'Brien, B.A.  
*Fourth Grade,  
School of Practice*



Agnes Agnitch  
*Third Grade, School 38*



Stella O'Reilly  
*Fifth Grade,  
School of Practice*



Grace G. Ballard, B.S.  
*Fourth Grade, School 38*



Theresa A. Roehsler, B.S.  
*Second Grade,  
School of Practice*



Mary L. Darker  
*Second Grade, School 38*



Elizabeth Bird Small  
*English and Latin,  
School of Practice*



Lena Denecke  
*Reading and Literature,  
School 38*



Ella M. Smith  
*Third Grade,  
School of Practice*



Mary J. Doe  
*Fourth Grade, School 38*



M. Josephine Durney  
B.S.  
*English, School 38*



Mary Hofmann Roberts  
B.S.  
*Fifth Grade, School 38*

Edna R. Gardner  
*Geography, School 38*



Frances M. Rudell  
*First Grade, School 38*

Thelma M. Hepp, B.S.  
*Second Grade, School 38*



Edna M. Shaw  
*Kindergarten, School 38*

Ethel H. Herlan  
B.S., M.A.  
*First Grade, School 38*



Elma R. Smith  
*Third Grade, School 38*

Ellen C. Mockler  
*Second Grade, School 38*



Inez E. Stebbins, B.S.  
*Second Grade, School 38*

Charlotte M. Moore  
*Arithmetic, School 38*



Marion P. Wakeman  
*Fifth Grade, School 38*

Lydie Chamot  
*French, School of Practice*

Genevieve Dye Feuchter  
*Fifth Grade, School 38*

Lina Gielow, B.S.  
*Reading and History  
School 38*

Isabel Houck Kidney  
A.B.  
*Registrar*

Nancy K. Lansdale  
*Garment Shoppe Manager*

J. F. Phillippi, A.B., M.A.  
*Professor of Mathematics*

Martha S. Pratt  
B.S., A.M.  
*Instructor in Teacher  
Training*

Ruby Simpson  
B.S., M.S.  
*Practice House Manager  
and Instructor in Home  
Administration*

Franklin Smith  
*Superintendent of Build-  
ings and Grounds*

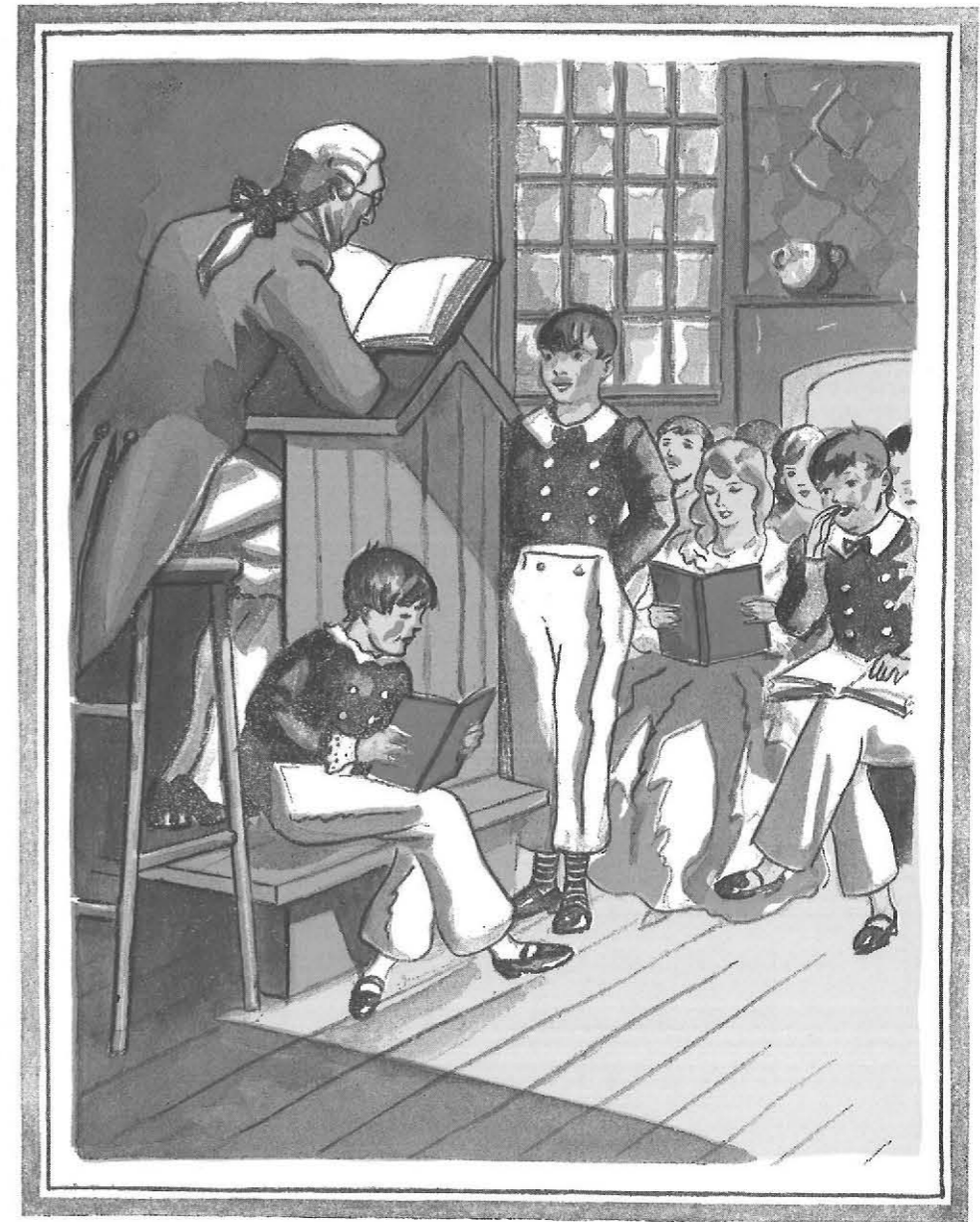
Robert O. DeMond  
A.B., A.M.  
*Professor of History  
Leave of Absence*

## Hero-Worship

Down before the altar of your life  
I lay my little hoard—  
For striving in my humble way  
I sought to do the things you did,  
To reach the heights sublime you reached  
By stepping in your tracks  
And leaning on your staff.

Naught have I done in just my name,  
But all I've done in yours.  
I'll ask not e'en the fame—nor shame;  
I've followed blindly and will die,  
For my high hope was lived before—  
It panted in your brain.  
My very breath was yours—and less.

—MARGARET GOFF

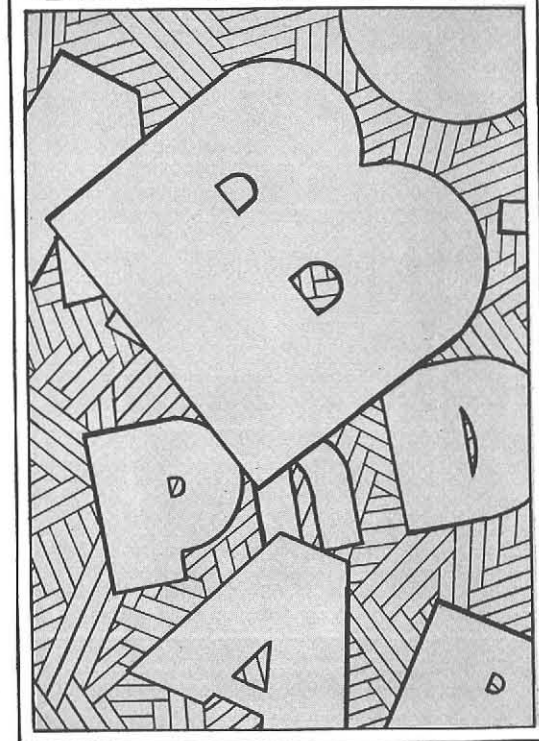


---

## CLASSES

---

# GRADUATES



### Senior Class Activities

THROUGHOUT the four years' career of struggle which we have pursued in the effort to be among the surviving fittest—the "B.S.'s in Ed."—we have been a class which has promised much, for the range of our talents was equalled only by our zeal for achievement. Even as this goes to press, the Home Economics seniors are actually promising to bring forth the stunt they have talked of for four years; the General Normal girls to produce a "potentially prize-winning" basketball team; the Class Day committee to have an outdoor breakfast if it doesn't rain too hard; and all of us to make the Senior Ball as brilliant an affair as ever.

But this is not to say that we have done nothing so far this year. At a Christmas party in Gandy's, dignified hilarity reached its highest pitch when our presiding genius, Dora Staby, performed an adagio with Mr. Pugsley. Since then we have necessarily bent our efforts toward work, but not too strictly to have led the Moving-Day parade with a float which was good, if not a prize-winner, and to have been the first to read original verse at the interclass sing.



DIVER



RINDONE



CONSTABLE



THEOBALD

### Senior Class Officers

MARGARET DIVER	President
MARY RINDONE	Vice-President
DORIS CONSTABLE	Secretary
RALPH THEOBALD	Treasurer



WINIFRED J. ALLEN

Alpha Sigma Alpha, '28-'31, Corresponding Secretary, '30-'31; Nu Lambda Sigma, '30-'31; Section Captain, '28-'29; Vice-President Junior Degree Class, '29-'30; Home Economics Club.



NINA AUSTIN

NELSON L. BIONDOLILLO  
Men's Club; Men's Glee Club; Dramatic Club Treasurer, '31.



ISABELLA BAIRD

Girls' Basketball, '27-'31; Y. W. C. A., '27-'31.

PAULINE ESTERHAY BOTTY  
Dramatic Club, '29-'31; Spring Play, '30; Senior Glee Club.



MARGARET BECK  
Y. W. C. A., '27-'31; New Voters' League, '30-'31.



MARIE BRAUN

Basketball, '28-'31; Baseball, '28; Y. W. C. A., '28-'31.



ESTHER E. BUCK

Non-Residents' Association.



RUTH M. BUDDENHAGEN

Central Council, '27-'28; Delta Sigma Epsilon, '27-'31, Treasurer, '30; Y. W. C. A., '27-'31; Silver Bay Delegate, '29; Phi Upsilon Omicron, '30-'31, President, '30-'31.

MARY IRMA CARMODY

Phi Upsilon Omicron; Home Economics Club; Alpha Sigma Tau, '28-'31, Secretary, '30; Panhellenic Representative, '28-'30; Y. W. C. A.; Dramatic Club; Spring Play '30; Christmas Play, '28-'29.

EDNA CLARK

Non-Residents' Association, Secretary, '29-'30; French Club, '30-'31; Honor Roll, '29-'31.



JEAN A. CANADA  
Home Economics Club, '28-'29; Record Staff, '29-'31.







MARY CLEGG

Y. W. C. A., '27; Home Economics Club; Junior Degree Class Treasurer, '30; Alpha Sigma Tau, '30-'31, Corresponding Secretary, '30.



DORIS M. CONSTABLE

Phi Upsilon Omicron; Alpha Sigma Tau, '29-'31; Panhellenic Representative, '29, President, '29, Secretary, '28; Y. W. C. A.; Representative to Social Program.



CLARA CORRITORE

ALICE DEHECK

Basketball, '27-'29; Y. W. C. A., '27-'31; Current Events Club, '30-'31.

MARGARET R. DIVER

Senior Class President, '30-'31; Alpha Sigma Tau; Phi Upsilon Omicron; Y. W. C. A., '27; Spring Play Costume Committee Chairman, '30; Christmas Play, '29.

GENEVIEVE DUTTON



JOHN EIGENBROD

President Athletic Association, '31; Editor Summer Record, '30; Men's Club; Record Staff, '30.



DOROTHY M. FEINEN

Non-Residents' Association, '30-'31.



KATHERINE G. FEW

Alpha Sigma Tau, '28-'31; Home Economics Club, '27-'31; Y. W. C. A., '27-'28; Basketball, '27; Senior Invitation Committee, '30; Panhellenic Association, '30.

PAULINE FOX

Art Kraft Klub, '28-'31, President, '30-'31; Record Staff; ELMS Staff; Home Economics Club.

GENEVA M. FIEBELKORN



SAMUEL FOTE





GARSON GOLDBERG



LILLIAN A. GREAR  
Non-Residents' Association,  
'30-'31; Y. W. C. A., '30-'31.



JANE GRENELL

MARTHA GRIERSON  
Non-Residents' Association.



DORIS V. GRITMAN  
French Club, President, '29-  
'30; Y. W. C. A., '30-'31.



JESSIE HARDY  
Home Economics Club, '27-  
'30; Alpha Sigma Tau, '30-  
'31, Vice-President, '30;  
Chairman of Ring and Pin  
Committee, '31.



RAYMOND HARROLD



FELIX W. HOWE



AGNES I. ISAACSON  
Alpha Sigma Tau, '29-'31,  
President, '31; Nu Lambda  
Sigma, '27-'31, President,  
'29; Junior Degree Presi-  
dent, '30; Executive Coun-  
cil, '30-'31; Delegate N. Y.  
U. Conference, '30.

BERTHA JOHNCOX  
Home Economics Club;  
Non-Residents' Association.



ELOISE KENNEY  
Basketball, '30.



MARGARET KERSTEN  
Home Economics Club; Pi  
Delta Theta, '29-'31; Rep-  
resentative Panhellenic, '29-  
'30, Treasurer, '29-'30, Presi-  
dent, '30-'31; Phi Upsilon  
Omicron, '29-'31; Librarian,  
'29-'31.





GRACE L. KLINE  
Basketball, '27-'30; Current Events Club, '29-'30; Y. W. C. A., '30-'31.



PHYLLIS BERYL KOLPIEN  
Non-Residents' Association, '30-'31.



SUSANNA E. KRAEMER  
Y. W. C. A.; Social Program Committee, Summer, '30.



ALICE LARSON  
Home Economics Club; Art Kraft Klub; Alpha Sigma Tau; Y. W. C. A., '28-'29; Junior Degree Class Secretary.



MONICA LAUGHREN



GERTRUDE LAWRENCE  
Home Economics Club; Y. W. C. A., '30-'31; Costume Committee, '28-'29; New Voters' League, '30-'31; Section Treasurer, '31; H. E. Fashion Show, '29.



RUTH E. LEINS  
Home Economics Club; Art Kraft Klub, '30-'31.



CLARA E. LINK  
Non-Residents' Association, '31; Current Events Club.



MYRTLE MANSFIELD  
Delta Sigma Epsilon, Corresponding Secretary, '29-'30, President, '30-'31; Home Economics Club, Chairman Home Economics Day, '30, State Student Chairman, '30-'31; Basketball.



DOROTHY A. MARLEY  
Alpha Sigma Alpha, '28-'31, President, '30-'31; Central Council Chairman, '29-'30; Chairman Junior Prom, '29-'30; Executive Council, '30-'31.



WILHELMINE J. MERKLE  
Home Economics Club, '28-'31; Pi Kappa Sigma, '30-'31; Home Economics Section Captain, '31.



CLARA B. MERKLING  
Basketball, '27; Y. W. C. A. '28; Current Events Club, '31.



RUTH E. MILLER

Treasurer Junior Glee Club, '27; Y. W. C. A., '27-'28; Home Economics Club, Home Economics Play, '28.



CHARLOT MOEHLAU

ELMS Staff, '31.



L. ANN MOORE

Y. W. C. A., '30-'31.

JEAN ADAIR MOULTON  
Sophomore President, '29;  
Silver Bay Delegate, '29;  
N. S. F. A. Delegate, '30;  
Delta Sigma Epsilon, President, '29-'30; Phi Upsilon Omicron; President Students' Association, '30-'31.

LILIANE O'DONOGHUE  
Non-Residents' Association, '29-'31, President, '30-'31; Theta Sigma Upsilon, '30-'31; French Club, '29-'31; Summer Social Program Committee, '30.

ELSIE PETERSON  
Y. W. C. A., '28; Alpha Sigma Tau, '30-'31, Treasurer, '31; Discipline Committee, '31; Home Economics Play, '28-'29; Chairman Home Economics Club Dance, '29.



ALFREDA PUGELL

Current Events Club, '29-'31, Vice-President, '31; Y. W. C. A., '30-'31; New Voters' League, '31.



RUTH N. PULS

Alpha Sigma Alpha, Treasurer, '30-'31; Home Economics Club; Y. W. C. A.



MARY ELIZABETH RAINBOW

Home Economics Club.

DOROTHY RALPH  
Basketball, '28-'31; Play-day Delegate, '29; Class Marshal, '29; Editor-in-Chief ELMS, '30; Art-Photograph Editor ELMS, '31.

RUTH E. RECH  
Basketball Freshman Championship Team, '27-'28; Y. W. C. A., '27-'28; Junior Glee Club, '27-'28; Alpha Sigma Tau, Vice-President, '29-'30; Central Council, '29-'30.

HELEN SUE REYNOLDS  
Alpha Sigma Tau, '30-'31; Home Economics Club; Non-Residents' Association, '27-'28; Y. W. C. A., '27-'28; Social Program Representative, '30.





MARY REYNOLDS

Art Kraft Klub, '28-'31;  
Home Economics Club.



MARY RINDONE

Pi Kappa Sigma, Secretary,  
'30; Vice-President Senior  
Class; Chairman Class Day,  
'30; Central Council, '27-  
'29; Glee Club, '29-'31; Dra-  
matic Club, '29-'31.



MARGARET ROBERTS

Non-Residents' Association,  
'30-'31; Current Events  
Club, '31; Y. W. C. A., '31.

LEONARD RUSSELL

Campus Club; Glee Club;  
Dramatic Club.



DORIS J. SCHUSTER

Pi Delta Theta.



COLETTE M. SHEEDY

Nu Lambda Sigma, '28-'31,  
Corresponding Secretary,  
'29-'30, President, '30-'31.



GLADYS M. SLATER

President Junior Graduat-  
ing Class, '30; Theta Sigma  
Upsilon, President, '31;  
ELMS Staff, '30; Basketball,  
'28-'30; Cortland Delegate;  
Silver Bay Delegate, '29.



LUCILLE L. SPICE

Home Economics Club.



DORA C. STABY

Basketball Captain Cham-  
pionship Team, '29-'31; Sec-  
tion Captain, '30-'31; Y.  
W. C. A., '29; Picture Com-  
mittee ELMS, '31; ELMS  
Staff, '30-'31; Moving Up  
Day Committee, '31.

PAULINE E. STRIKER

Record, Business Manager,  
'29-'30; Editor, '31; ELMS  
Staff, '29-'30; Delta Sigma  
Epsilon, '27-'31; Phi Upsi-  
lon Omicron, '28-'31; Ex-  
ecutive Council, '31; Junior  
Prom Committee, '30.

ELVERA STRACHAN

Glee Club, '30-'31; Basket-  
ball, '28-'29; Chairman Cap  
and Gown Committee, '31;  
Flower and Color Commit-  
tee, '30.



ETHEL M. TEMPLE

Home Economics Club.



RALPH E. THEOBALD

Men's Club, '30-'31; Campus Club, '30-'31; Men's Glee Club, '28-'29; Treasurer Senior Class, '31; Chess Club, '29; Editor Summer Record, '29; Editor Record, '30.



IOLA P. TILLNER

Y. W. C. A., '29-'31.



ELINOR TURK

MILLIE VILLAFRANK  
Non-Residents' Association, '30-'31.



EDITH WEBSTER  
Non-Residents' Association, '31.



BELLA R. WEEKES



FRANCIS W. WIERZBOWSKI

Men's Glee Club, '30-'31; Summer Session Record Staff, '30; Summer Session Social Program Committee, '30.

ESTHER BLISS  
Pi Kappa Sigma, '28-'31; Phi Upsilon Omicron, '29-'31.

FRANCES M. CROSS  
Home Economics Club, '26-'29; Senior Glee Club, '28-'30; Y. W. C. A., '30-'31.

RUTH GUTMAN  
Basketball, '27-'28; Current Events Club.



MAY ZDARSKY

Home Economics Club; Alpha Sigma Tau, Historian, '31; Current Events Club, '29; Y. W. C. A., '29-'31; Senior Picture Committee, '31.

EDWARD BRUNNER  
Men's Glee Club; Dramatic Club; Men's Club.

ELIZABETH FONTAINE

A. LAURANCE HOLCOMBE



WINONA E. ZIEMANN

Y. W. C. A., '27-'29; Basketball, '26-'27; Glee Club, '28.

DOLORES M. CAVALIERI  
Junior Glee Club, '27; Senior Glee Club, '28; Section Representative, '27; Sophomore Program, '28.

GERTRUDE GAVIN

TILLIE KAISER  
Basketball, '27; Y. W. C. A., '28; Current Events Club; Sociology Club, President, '30.

EDWINE M. KOENIG

CATHERINE LINDER

EDNA M. MITCHELL

Home Economics Club, '29-'31; Phi Upsilon Omicron, '30-'31.

ELSA PROZELLER

GERALDINE N. RANKINS

GLADYS RUHLAND

Alpha Sigma Tau, '28-'31; French Club, '28; Dramatic Club, '28.

Y. W. C. A., '30-'31; Nu Lambda Sigma, '28-'31, Vice-President, '31.

ALICE G. SCHAFER

JENNY L. SCIBETTA  
Basketball, '27, '30.

VIRGINIA SHERET  
Pi Kappa Sigma; Home Economics Club.

HELEN M. STEPHENS

FRANCES STROOD

IRENE TABER

Glee Club, '27; Home Economics Club, '27-'31; Y. W. C. A., '30.

ETHEL ZUBKOFF



HOLME



FARBER



HUBER



HANNAN

### Junior Class Officers

MARIE HOLME	President
JEANETTE FARBER	Vice-President
ETHEL HUBER	Secretary
LESTER HANNAN	Treasurer



JOSEPHINE ACKERMAN  
ELMS Staff, '30.



MARIE ALFANO  
Current Events Club, '29;  
Basketball, '29-'30; ELMS  
Staff, '30.



ADALINE ALLAN  
Delta Sigma Epsilon; Senior  
Girls' Glee Club, '30-'31;  
Central Council, '29-'30;  
Kindergarten-Primary Day  
Program, '30; Basketball  
'29.

AUGUSTA M. ALLEIN  
Current Events Club, '29;  
Basketball, '29.



DOROTHY L. ALLGRIM



MILDRED J. AUSTIN



GRACE E. BALDWIN  
Basketball, '29-'30; Cur-  
rent Events Club, '30-'31.



GERALDINE BAMBERG



RAYMOND C. BARRY

DORIS E. BECKER  
Junior Glee Club, '28-'29;  
Y. W. C. A., '28-'29; Senior  
Glee Club, '29-'31, Secre-  
tary, '30-'31.



BEULAH BEERS  
Basketball, '28; Current  
Events Club, '28.



FRANCES D. BELLANCA  
Nu Lambda Sigma, '28-'30,  
Treasurer, '28-'29; Central  
Council, '29; Executive  
Council, '30-'31; Chairman  
Elections Committee, '29-  
'31; Secretary Graduating  
Class, '31; Chairman Sen-  
ior Ball Committee, '31.







EVERETT C. BENNETT



F. GORDON BENNETT  
Psi Phi, '29-'31; Men's Club  
'28-'31.



GERALDINE BINGENHEIMER  
French Club, '28-'31, Treas-  
urer, '30, President, '31.

JEANETTE F. BONGIOVANNI  
Current Events Club, '28;  
Sociology Club, '28-'29; N.  
S. F. A. Committee, '30.



MARGARET MARY BRADY



MARY MARGARET BRADY  
Glee Club, '28-'31; Dele-  
gate to Central Council, '28.



RUTH A. BREMS  
Glee Club, '28-'31; Vice-  
President, '30-'31; Alpha  
Sigma Alpha, '29-'31; Bas-  
ketball, '28.



BEULAH A. BRETT  
Sophomore Assembly, '28;  
Senior Ball Committee, '30.



ENDORA L. BUMPUS  
Y. W. C. A., '28-'29.

MARGARET BUNCE

Central Council, '29; Bas-  
ketball, '30-'31; Nu Lamb-  
da Sigma, '29-'30, Treasurer  
'30-'31.



PAULINE L. BURGESS

French Club, '28-'29; Y. W.  
C. A., '29-'31.



LESTER J. BURKE

Kappa Kappa Kappa, '29-  
'31.





HELEN K. BURNS  
Basketball, '28-'31; Section  
Treasurer.



MARGARET MARY BURNS  
Dramatic Club, '29-'31; Al-  
pha Sigma Alpha.



KATHERINE E. CANNON  
Basketball, '28-'30; Y. W.  
C. A., '28-'30; Non-Resi-  
dents' Association, '28-'30;  
Section Captain, '29-'30;  
Central Council, '28; Junior  
Prom Committee, '30.

RUTH V. CARMAN  
Basketball, '28, Orange and  
Black; Playday Delegate,  
'29; Christmas Play, '29;  
Glee Club, President, '30;  
Moving Up Day Committee,  
'31.

FRANCES CANTOR



RUTH CHAMBERLAIN



FRANCES E. CISZEK  
Y. W. C. A., '28; Current  
Events Club, '30.



ESTHER COOK CLARK  
Non-Residents' Association.



RUTH MARION CLARK

VIRGINIA P. CONDON  
Glee Club, '28-'31; Soffrivo-  
lities, '29; Junior Prom  
Committee, '30; Basketball,  
'28-'29; Section Treasurer,  
'28-'30.

ALICE CONRAD



THELMA H. CORCORAN  
Girl Marshal, '28-'29; Bas-  
ketball, '28-'29; Vice-Presi-  
dent Y. W. C. A., '31; Alpha  
Sigma Alpha, '29-'31; Glee  
Club, '28-'31; Dramatic  
Club, '28-'29; Cortland Play-  
day Delegate, '29.



JEANETTE COUHIG  
Basketball, '30-'31.



GRACE E. CRANE  
Central Council, '28; Junior  
Girls' Glee Club, '28; Senior  
Girls' Glee Club, '29-'30;  
Basketball, '28-'29.



ELSIE M. CURTIS  
Non-Residents' Association,  
'29-'30; Junior Girls' Glee  
Club, '29-'30-'31.

LEONA DAVIS

Dramatic Club, Vice-Presi-  
dent, '29, Treasurer, '30;  
Glee Club, '28-'29-'30;  
Christmas Play, '29; Sum-  
mer Glee Club, '30.

VIRGINIA DALEY  
ELMS Business Staff, '30-'31.



BERNICE DEPARMA  
Y. W. C. A., '30-'31.



RAFFAE A. DEANGELIS  
Sociology Club, '28-'29; Cur-  
rent Events Club, '28-'31;  
Y. W. C. A., '30-'31; New  
Voters' League, '30-'31.



ELEANOR L. DOBLER  
Dramatic Club, '28-'29.



GEORGE L. DOBSON

HARRY S. DOUGLASS

Dramatic Club, '28-'30;  
Spring Play, '29; *Record*  
Staff, '29-'31, News Editor,  
'30-'31; Summer *Record*, '29;  
Men's Club, '30-'31, Chair-  
man, '30.

JOHN DONOVAN



JOYCE DUNKELBERGER  
Y. W. C. A., '29-'31; Kin-  
dergarten-Primary Play, '30;  
Orchestra, '29-'31; Non-Res-  
idents' Association, '31.





RUTH L. DUNKELBERGER  
Junior Glee Club, '28-'29;  
Senior Glee Club, '29-'31;  
Orchestra, '28-'31; Y. W. C.  
A., '28-'31; Nu Lambda  
Sigma, Recording Secre-  
tary, '31.



ANNE JENNETTE DUNLAP  
Y. W. C. A.



MARJORIE M. ECKHARDT  
Delta Sigma Epsilon, Cor-  
responding Secretary, '31;  
Basketball, '29-'30; Senior  
Glee Club, '30-'31; Y. W. C.  
A., '29-'30; Central Council,  
'30; Section Captain, '29-  
'31; Sophomore Treasurer,  
'30.

GORDON S. EDDY  
Psi Phi, '29-'31; Debating,  
'29; Record Staff, '29-'30;  
N. S. F. A. News Corre-  
spondent, '30; Tennis, '30-  
'31; Men's Glee Club, '31;  
Vice-President Students' As-  
sociation, '31.

RUTH ECKHARDT  
Nu Lambda Sigma, '27-'30.



NORMAN J. EDINGER



GEORGE ENTWISTLE



JEANETTE FARBER  
Vice-President Graduating  
Class, '31; Dramatic Club,  
'29-'31; Spring Play, '29;  
Student Government Day  
Assembly, '30; Property  
Chairman Dramatic Pres-  
entation, '30.



FELINA FAY

ROSE WINIFRED FERRY



MARION FIEDLER



MARY C. FLANAGAN  
Non-Residents' Association,  
'29-'31.





MARIO FONTANA



PAUL C. FORD



LEO JOSEPH FOROSCIJ  
Debating Club, '28-'30;  
Spring Play, '29; Summer  
*Record*, '30; Campus Club,  
'30.

LORRAINE M. FRANK

Basketball, '28; Junior Glee  
Club, '28-'29; Senior Glee  
Club, '29-'31; *Record* Staff,  
'30-'31; Freshman Assem-  
bly Program, '29.

CATHERINE FRAWLEY

Y. W. C. A., '28-'31; Glee  
Club, '27-'29; Current  
Events Club, '30-'31.

CLAUDE FOSTER  
Men's Club; French Club;  
Men's Glee Club.



MINNIE F. GAETH



VIRGINIA GANGLOFF  
Executive Council, '31; Edi-  
tor Student Handbook, '31.



JAMES GILMOUR

VILMA GOLDE

Delegate to Central Coun-  
cil, '28-'30; Senior Ball Com-  
mittee, '31.

RAYMOND GILROY



MARY E. GORMAN



ETHEL GRABENSTATTER

Basketball, '28; Record Staff, '28-'31; Senior Glee Club, '29-'31; Freshman Assembly Program, '28.



RUTH GRAMPP

Junior Glee Club, '29; Basketball, '30; Y. W. C. A., '29-'31; Gift Committee, '31.



PAUL D. GRIFFIN

Psi Phi, '27-'31; Dramatic Club, '27-'28; Men's Club, '28, '31; Campus Club, '31.

ROSE GROSS



MARGARET W. GUENER

Dramatic Club, '29; President Junior Glee Club, '29; Senior Glee Club, '30-'31; Basketball, '30; Song and Motto Committee, '31.



LESTER T. HANNAN

Orchestra, '28-'31, President, '30; Band, '31; Treasurer Junior Class, '31; Finance Committee, '31; Student Handbook Committee, '31; Men's Club.



HAROLD HANSON



DORIS E. HARKNESS  
Nu Lambda Sigma, '29-'30.



PAUL HATCH

MARGARET M. HAYDEN



AUDREY C. HEIM  
Basketball, '28-'31.



HAZEL C. HESSINGER  
Y. W. C. A., '30-'31; Current Events Club Secretary, '31.





DOROTHY HIGGINS



HELENA A. HIGGINS  
Non-Residents' Association,  
'31.



JOSEPH HOEFLER

MARIE ELLEN HOLME

Delta Sigma Epsilon, Chaplain, '29; Y. W. C. A., Secretary, '29; Section Captain, '28-'30; President, Third Year Class, '31; ELMS Staff, '31; Senior Glee Club, '29-'31.

EDITH M. HOLMES

Y. W. C. A., '28-'30; Current Events, '28; Elections Committee, '30; Summer Chorus, '30.

KATHRYN E. HOLZER



MARION C. HOPWOOD  
Record Staff, '29; Basketball, '31; Picture Committee, '31.



HAZEL C. HORA  
Dramatic Club, '29; Junior Glee Club, '29; Senior Glee Club, '30-'31; Alpha Sigma Tau.



URSULA M. HORGAN  
Central Council, '28-'29; Section Captain, '30-'31; Current Events Club, '28-'29.

ETHEL A. HUBER

Delta Sigma Epsilon, '28-'31, Treasurer, '31; Glee Club, '28-'31; Y. W. C. A.; Secretary, Sophomore Class '30; Assembly Program Committee, '29-'30; Christmas Play, '29.

HELEN G. HUNT

Orchestra, '28-'29; Glee Club, '28-'30; Basketball, '28.

RHEA HUNT





RITA HUTTER  
Y. W. C. A., '28-'29.



HELEN JOHNSTON  
Record Staff, '29-'31.



MARGARET JANE JONES  
Junior Girls' Glee Club, '29.

ROSEMOND E. JONES  
League of Women Voters,  
'30-'31.



CHARLES E. JORDAN



VIOLA JURGENS



ESTHER KAHLER  
Orchestra, '28-'31.



BERNICE M. KAISER  
Glee Club, '28-'31.



FLORENCE KAMERY  
Y. W. C. A., '27-'28.

SAMUEL KAPLAN



LORETTA KELLY



MARGARETTA KERSPERSKE  
Basketball, '29-'31; Glee  
Club, '29-'31, Treasurer, '31.







JANE E. KING  
Current Events Club, '31.



MAX KIRSHNER



FRANCES KRENNING  
Central Council Delegate,  
'29; Treasurer, Section V,  
'28; Honor Roll, '29.



PAULINE KRUEGER  
Glee Club, '28-'29.



GRACE LESHER  
Sigma Sigma Sigma, '28-'31.



MILDRED I. LEVITAN  
*Record Staff*, '28-'31; Fresh-  
man Assembly, '28.



MARY CHARLOTTE LEWIS  
Non-Residents' Association,  
'29-'31, President, '31; Sum-  
mer Session Social Program  
Committee, '30; Basketball,  
'30-'31.



MARION LONG



JANET MACGAMWELL  
*Record Staff*, '30-'31; Junior  
Glee Club, '28-'29; Fresh-  
man Assembly, '28.

HARRIETT McCARTIN  
Y. W. C. A., '28-'31; Bas-  
ketball, '28-'31; Non-Resi-  
dents' Association, '29-'30;  
Assembly Program Com-  
mittee, '30-'31.

JOHN I. MCCREADY  
Psi Phi; Orchestra; Picture  
Committee; Band; Men's  
Club.

ELINOR MAEDER  
President Current Events  
Club, '29; New Voters'  
League, '31; Current Events  
Assembly, '29; Summer  
School Program Committee,  
'28.





ANNA MAHONEY  
Basketball, '31.



WILLIAM MALE



FLORENCE MALMBERG  
Glee Club, '29; Honor Roll,  
'29.

MARGARET MALONE  
Basketball, '29-'30; Y. W.  
C.A., '30-'31; Central Council,  
'28; Section Treasurer,  
'31.



ANNE R. MANNING  
Section Captain, '28; Rid-  
ing Club, '28-'29; Kinder-  
garten-Primary Play, '30.



MINNIE MERRILL



JOSEPHINE MESI  
Current Events Club, '29-  
'31; Sociology Club, '29;  
French Club, '29; Glee Club,  
Summer, '30; Y. W. C. A.,  
'30.



MARTHA MESSINGER  
Delta Sigma Epsilon, '29-  
'31; Basketball, '30-'31; Sec-  
tion Captain, '29-'30; Class  
Day Committee, '31.



MARION H. MITCHELL  
Kindergarten Play, '30.

ELLA KATE MULLER



EVELYN MURNEY  
Basketball, '28-'31; Current  
Events Club, '30-'31.



MARY JANE MURPHY





WILLIAM MURPHY



MILDRED M. NAGLE  
ELMS Staff, '31; Kindergarten Play, '30.



ANGELA M. NAPLES  
Summer Social Program Committee, '30.

VIRGINIA C. NESSELBECK  
Alpha Sigma Tau, '29-'31, Secretary, '30-'31; Section Captain, '30-'31; Basketball '28, '30; Color and Flower Committee.



VIOLET G. NOTTER  
Basketball, '29-'31; Glee Club, '29-'31; Y. W. C. A., '28; Dramatic Club, '31; Senior Ball Committee.



MARGARET R. O'MARA  
Basketball, '29; Pi Kappa Sigma, '30-'31; Treasurer of Section, '31.



KATHLEEN E. OSBORNE  
Summer Social Program Committee, '30; Current Events Club, '31.



HELEN OVERTURF  
Summer Social Program Committee, '30.



CATHERINE OWENS  
Pi Kappa Sigma, '29-'31; Current Events Club, '31; Basketball, '28-'29; Moving Day Program Committee, '30.

MARY A. PALMISANO  
Basketball, '28, '31; Current Events Club, '28.



MARGARET E. PALSER  
Current Events Club, '31; Y. W. C. A., '28; Riding Club, '28.



FRIEDA A. PASCHKA  
Y. W. C. A., '28-'29; Basketball, '29-'30; Current Events Club, '30-'31.





GLADYS PETILLON  
Glee Club.



EVELYN L. PETZING  
Y. W. C. A., '30.



FLORENCE J. PHILLIPS  
Basketball, '29; Riding  
Club, '28-'29; Y. W. C. A.,  
'30-'31; Non-Residents' As-  
sociation, '30-'31.



BESSIE PLESKOW



ADELIA M. POPLAWSKA  
French Club, Vice-Presi-  
dent, '29, President, '30.



HELEN J. PURCELL  
French Club, '29-'30; Bas-  
ketball, '29.



MARGARET P. RALPH  
President, Freshman Class,  
'29; Social Program, '30;  
Basketball, '29; Senior Glee  
Club, '29-'31; Treasurer Ex-  
ecutive Council, '31; Senior  
Ball Committee, '31; Sec-  
tion Captain, '28.



JANE C. RAMSEY  
Section Captain, '29; Bas-  
ketball, '29; Vice-President  
Junior Glee Club, '30; Sen-  
ior Glee Club, '30-'31; ELMS  
Staff, '31.



LILLIAN REISS  
Basketball, '28; French  
Club, '28.



FREDA REUTER  
Glee Club, '30-'31.



HENRY N. RICHARDS  
French Club, '28-'29; Dra-  
matic Club President, '30;  
Men's Glee Club, '28-'31;  
Men's Club, '31; Orchestra,  
'28-'31; Central Council, '28-  
'29; Section Captain, '29.



MARIAN RILEY  
Y. W. C. A., '28-'31; Cur-  
rent Events Club, '28; Bas-  
ketball, '29; Business Man-  
ager, 1931 ELMS; Cha'rman  
Senior Picture Committee,  
'31.



NAHOMA ROSENBLUM  
Junior Glee Club, '28; Basketball, '28-'31.



RUTH SALLACK



ELIZABETH L. SAWYER  
Y. W. C. A., '28-'31.

GRETCHEN SCHULZ

Y. W. C. A., '28-'30; Sociology Club, '28; *Record* Staff, '31; Current Events Club, '31.

KATHERINE SECRIST

Basketball, '29-'31; Baseball, '29; French Club, '29.



CHARLES SCHILLING  
Chairman, Senior Finance Committee, '31.



LEONA SEMON  
Riding Club, '28-'29; Y. W. C. A., '30-'31; Non-Residents' Association, '30-'31.



ANITA SENEAL  
Sigma Sigma Sigma, '29-'31, Recording Secretary, '30, Corresponding Secretary, '31.



ROMAYNE SHALLER  
Basketball, '29; Glee Club, '29-'31.

FRANCES S. SHETLER

Pi Kappa Sigma; Glee Club, '29-'31; Basketball, '29; Cap and Gown Committee, '31.

ABRAHAM SIEGEL

*Record*, Art Editor, '31.

RUTH E. SLACER

Basketball, '29; Senior Glee Club, '30.





CLARIBEL SLATER

Pi Kappa Sigma, '29-'31; Section Captain, '29-'31; Glee Club, '28; Basketball, '28-'31; Freshman Day Program, '28; Senior Finance Committee, '31.



RUTH L. SLOSS

Central Council, '29; Glee Club, '30; Basketball, '29.



EDWARD L. SLY

EDWARD F. SMITH



ELEANOR M. SMITH  
Basketball, '28-'29; Current Events Club, '28.



MARIAN W. SMITH



AMANDA SNELL



ADA R. SNYDER

Dramatic Club, '28-'30; Y. W. C. A., '28-'31; Non-Residents' Association, '28-'31; ELMS Business Staff, '31.



DOROTHY M. SNYDER

Basketball, '28-'31.

HAZEL SNYDER



ALICE B. STANDART  
Y. W. C. A., '30-'31.



MILDRED L. STARR  
Theta Sigma Upsilon; Y. W. C. A., '28-'30; Non-Residents' Association, '28-'30, Vice-President, '29, Secretary, '30.





MARJORIE STEARNS



HERBERT STEIN



BERNICE STRASSBERGER  
Dramatic Club, '28.

BENNETT STRULL



PAULINE SULLIVAN  
Y. W. C. A., '29-'31; Non-Residents' Association, '30.



AMALIA SUPPES  
Orchestra, '28-'31; Central Council, '28.



GEORGE SWANSON



KATHRYN SWEENEY  
Sigma Sigma Sigma, '28-'31;  
Kindergarten Play, '30.



JANE TORRENCE  
Sigma Sigma Sigma, '31.

CURTIS TRACY



CHARLES E. TREMPER



FLORENCE TUCKER  
Basketball, '28; Riding Club, '28.





IDA URKOFSKY  
Stunt Nite, '29; Freshman  
Day, '29.



KATHARINE M. VANLOAN  
Sigma Sigma Sigma, '31.



HELEN WAGNER

SYLVIA WEINSTEIN  
Dramatic Club, '28-'29;  
Freshman Day Program, '29;  
Basketball, '29-'31; Stunt  
Nite, '29.

FRANCES WEIS

HELEN E. WESTCOTT  
Pi Kappa Sigma, Treasurer,  
'31; Current Events Club,  
'30-'31; Section Treasurer,  
'30.



VERONICA H. WHALEN  
Basketball, '28-'31; Y. W.  
C. A., '29; Riding Club, '28;  
Summer Social Program  
Committee, '30; Current  
Events Club, '30-'31.



LOTTIE M. WIERZBOWSKA  
Basketball, '28-'30; Art  
Kraft Klub, '29-'31; French  
Club, '29.



ETHEL M. WILSON  
Non-Residents' Association,  
'29-'31.

REGINA WISNIEWSKA

Y. W. C. A., '28-'30; Bas-  
ketball, '28-'30; Freshman  
Assembly, '28; Summer So-  
cial Program, '30; ELMS  
Staff, '31.

MARGARET E. WOODS

Dramatic Club, '28; Pi  
Kappa Sigma, Keeper of  
Archives, '29, Correspond-  
ing Editor, '30; Current  
Events Club, '30-'31.

HAROLD WILSON







CARL WRIGHT

ANGELINE ALOISIO

MARION M. BEESING  
Y. W. C. A., '28-'30.

ANNE BLOOM

DORIS BROWN

DOROTHY L. BYRNE

JOSEPHINE CRISP

MARGARET DONAHUE

ROSE GOODMAN

MARIE HALLORAN

GEORGE J. HATCH

ESTHER HOLBROOK

DE ETTE METZ

MARY MOSHER

IRENE T. PECOR

ELSIE RUMBLE

HARRY J. SALMON  
Kappa Kappa Kappa, '28-  
'31.

MILDRED STRUNKE

EILEEN SULLIVAN

IDA WEXLER

## Senior Class Song

Our S. T. C., wher-e'er we go,  
We ne'er forsake your name,  
Your tower guide us with its light  
And lead us on to fame.  
We'll always hear your chimes ring clear  
Through scenes, beloved anew;  
And make us strong to honor long  
Your spirit kind and true.

All praises to our Captain, guide,  
Your goal has been attained:  
A monument, work of your hands,  
For this we sing our praise.  
You labored well in our behalf,  
To build for us this home—  
God give you strength to carry on  
For S. T. C. our own.

—CURTIS TRACY

## Builders

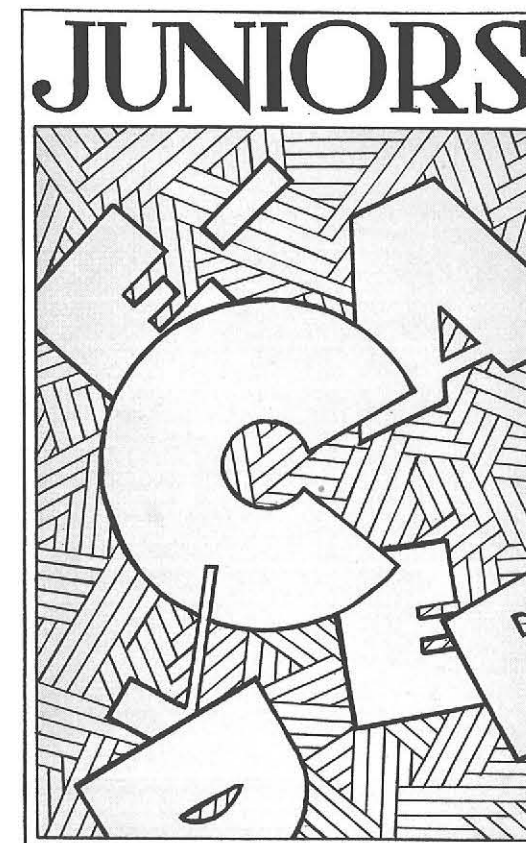
Temples or shacks we'll build each day,  
We are the potters, the child is the clay.  
Let us be strong, let us be true,  
Let us look up to the work we do!

The way we laugh and the way we smile,  
Is really building all the while.  
Let's build with smiles, not with fears,  
Let's build with laughter, not with tears!

Why not be potters of the soul,  
Making love our greatest goal!  
Let's teach the child to live each day,  
And "buck the job" when it comes his way.

Ours a profession, true and great,  
Builders all, let's be up to date!  
Let's fit ourselves to meet the test,  
And if a builder, then the best!

"My utmost for the highest," clear,  
Is our motto for the year,  
Let's take it up, and live it strong,  
Let's make our lives a building song!





OTTENOT      ROSEBROCK      MC ENENY      MURPHY

### Junior Degree Officers

MARGARET McENENY	President
BEATRICE ROSEBROCK	Vice-President
MARIE MURPHY	Secretary
ALBERTA OTTENOT	Treasurer



### Junior Degree Activities

THE Junior Degree Class of '30-'31 is the largest Junior Degree Class in the history of State Teachers College. At this time, due to an oversupply of teachers, a great many are taking advantage of securing a Bachelor of Science degree in education or home economics.

The first and most important event of the year was the Junior Prom, held at the Twentieth Century Club, December thirtieth. It was a tremendous success. The proceeds were given to Dean Reed to be used for the partial equipment of Social Center B.

But the class was really not noticed until February twenty-fourth, when for the first time as a separate unit in the Interclass Sing, they entered, small in number, but great in enthusiasm. Junior Degree received second place.

On March sixth, the members of the class met in the social center for a get-acquainted party. This was the first time they had been together as a class, in a social group.

The year has been most successful. A new kind of spirit for the Junior Degree Class has been established, and it is hoped that those who follow will hold up the standard set for them.



# SOPHOMORES

A stylized graphic design featuring the word "SOPHOMORES" in a bold, blocky font. The letters are filled with a complex, geometric pattern of overlapping lines and shapes, creating a textured, almost abstract effect. The design is contained within a rectangular border.



WAGNER      KEDDIE      FISHER      HEFFLEY

### Sophomore Class Officers

ALICE I. FISHER	President
MARY KEDDIE	Vice-President
ETHEL WAGNER	Secretary
MARY HEFFLEY	Treasurer

### Sophomore Class Activities

THE activities of the Sophomore Class during the period '30-'31 began with the guiding of some three hundred Freshmen about the old college building on the day of registration, September ninth. We felt highly honored that we above all others, should have had the distinct privilege of introducing the last Freshman Class (to enter that building) to our beloved but fast fading Alma Mater.

The week of October twentieth was a busy one for all Sophomores who sought to belittle their lower-classmen in a legitimate manner. Beginning on Wednesday of Freshman Week all Freshies were compelled to obey certain Sophomore rules, demanding that the former do such things as carrying their books in pillow cases, wearing green hair ribbons, and dispensing with cosmetics. This exciting week was brought to a close with an assembly program given by the Sophomores who portrayed the evolution of "Pea-Green Freshmen" into "elegant" Sophomores.

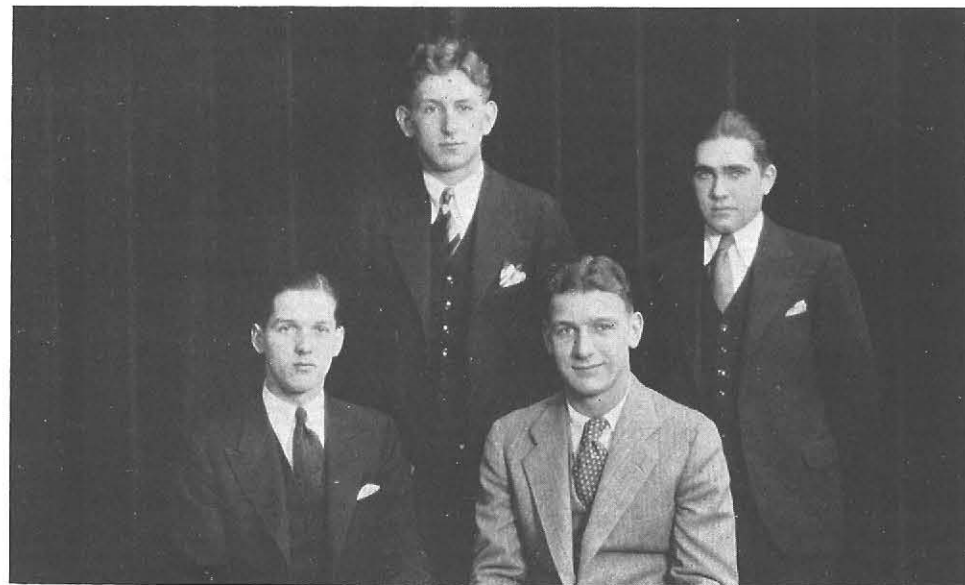
Almost immediately after the announcement that the Interclass Sing would be held on Tuesday, February twenty-fourth, the Sophs plunged into a period of regular rehearsals, and spent hours in making caps and mittens to be worn. They did want to win that Sing! Because of the difficulties encountered in arranging rehearsals for teaching and non-teaching sections they found it necessary to send certain girls to the various sections during the ten minutes between classes, and thus conduct rehearsals. On the momentous day, they took their places in the auditorium, forming an S of orange caps and orange mittens, on a background of black caps and orange mittens. The banner which went to them last year is now theirs for another year, and they hope, for another one after that.

The traditional Sweater Dance held on St. Patrick's day was the grand finale of Sophomore activities.



# FRESHMEN

A large, stylized graphic design for the 'FRESHMEN' section. The word 'FRESHMEN' is written in a bold, serif font at the top. Below it is a large, abstract graphic composed of various geometric shapes and patterns, including a large letter 'C' and other stylized elements. The background of the graphic is filled with a complex, woven or braided pattern.



TRESCH      MANLEY      RICHARDSON      BREWSTER

### Freshman Class Officers

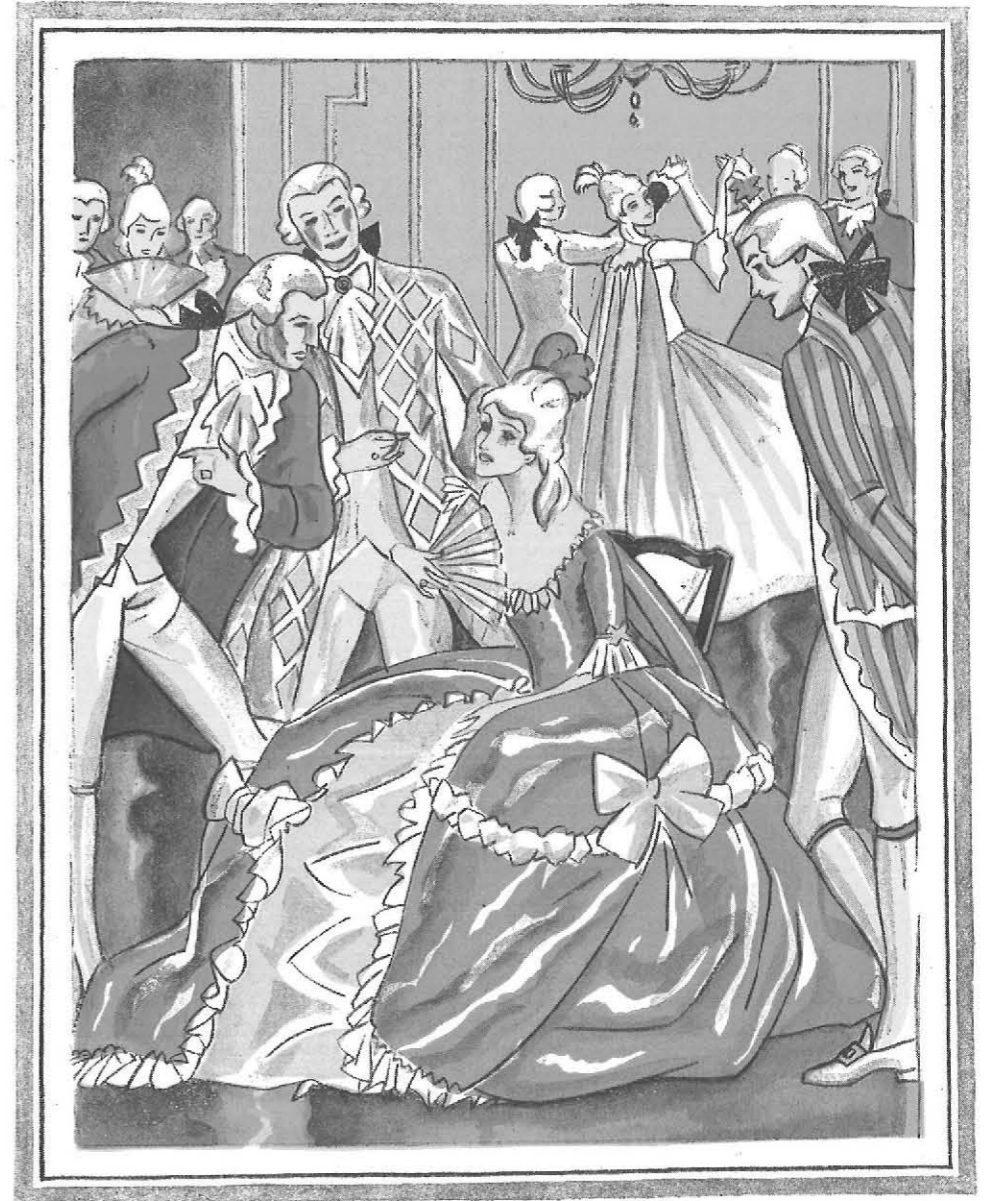
- |                    |                       |
|--------------------|-----------------------|
| FRANCIS RICHARDSON | <i>President</i>      |
| HOWARD TRESCH      | <i>Vice-President</i> |
| FRANCIS MANLEY     | <i>Secretary</i>      |
| FRANK BREWSTER     | <i>Treasurer</i>      |



FRESHMAN!

### Freshman Class Activities

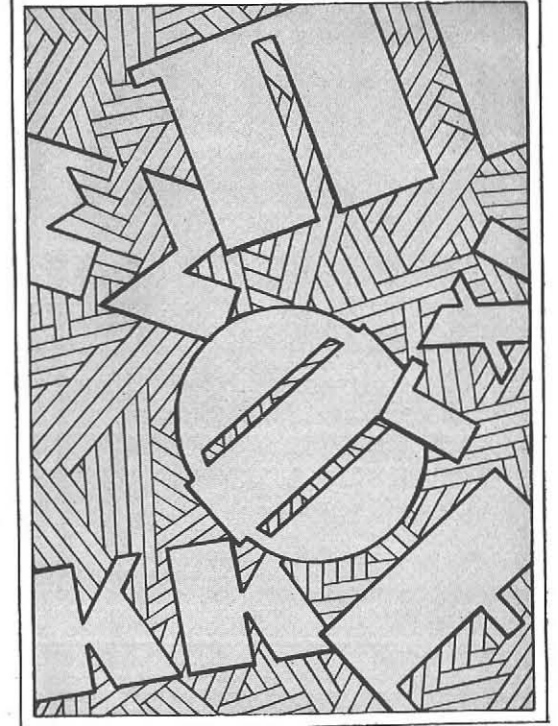
As the school year is rapidly drawing to a close, we are forced to realize that our Freshman Days will soon be a thing of the past. Although the activities in which we have participated have not been outstanding, it is to be understood that this year we are the understudies soon to take leading roles among the upperclassmen. We shall always remember the fun of Freshman Week, the football games with the Sophs, the interclass basketball tourneys, and the numerous parties we had. All of these will tend to make this year something more than a memory. Considering all the talent we possess the prospects are very brilliant for the future years. Just watch the Class of 1934!



# ACTIVITIES



# FRATERNITIES





REYNOLDS, HEFFLEY, SCHARLOCK, MANSFIELD, BEARE, FISHER  
SIMMONS, WILSON, MARLEY, ISAACSON, SLATER, KERSTEN, STEINBACH  
CARMODY, MURPHY, PAGE, MRS. NYE, DOELMAN

### Panhellenic Association

#### OFFICERS

FRANCES PAGE . . . . .	<i>President</i>
GRACE LESHER . . . . .	<i>Corresponding Secretary</i>
LIDA DURANT . . . . .	<i>Recording Secretary</i>
MARIE MURPHY . . . . .	<i>Treasurer</i>
MRS. NYE . . . . .	<i>Faculty Adviser</i>



FRANCES PAGE

### Panhellenic Association Members

DOROTHY MARLEY	ALPHA SIGMA ALPHA BEATRICE SIMMONS	ORCADA SINCLAIR
AGNES ISAACSON	ALPHA SIGMA TAU IRMA CARMODY	JEAN BEARE
MYRTLE MANSFIELD	DELTA SIGMA EPSILON CANDACE DOELMAN	MARY HEFFLEY
MARGARET KERSTEN	PI DELTA THETA LIDA DURANT	ELIZABETH WEBER
BERTHA REYNOLDS	PI KAPPA SIGMA MARIE MURPHY	HELEN STEINBACH
ELEANOR SCHARLOCK	SIGMA SIGMA SIGMA GRACE LESHER	ALICE FISHER
GLADYS SLATER	THETA SIGMA UPSILON FRANCES PAGE	NORMA WILSON



HALL, SEALANDER, DALY  
SIMMONS, BREMS, FALKNER, POWERS, OTTENOT, DUFFY  
HALLER, BURNS, CORCORAN, MISS SMALL, GORHAM, REISS, SINCLAIR  
BURNES, JEMISON, MARLEY, GREENWOOD, PULS

### Alpha Sigma Alpha

#### MEMBERS

WINIFRED ALLEN  
RUTH BREMS  
MARION BURNES  
MARGARET MARY BURNS  
THELMA CORCORAN  
MARGARET DALY  
DOROTHY DUFFY  
MADELINE FALKNER  
ALICE GORHAM  
ELEANOR GREENWOOD



LAURA HALL

LORRAINE HALLER  
GERALDINE JEMISON  
DOROTHY MARLEY  
ALBERTA OTTENOT  
MARY POWERS  
RUTH PULS  
EDITH REISS  
HARRIET SEALANDER  
BEATRICE SIMMONS  
ORCADA SINCLAIR



DOROTHY MARLEY

### Alpha Sigma Alpha

#### OFFICERS

DOROTHY MARLEY . . . . .	<i>President</i>
ELEANOR GREENWOOD . . . . .	<i>Vice-President</i>
MARION BURNES . . . . .	<i>Recording Secretary</i>
WINIFRED ALLEN . . . . .	<i>Graduate Secretary</i>
RUTH PULS . . . . .	<i>Treasurer</i>
GERALDINE JEMISON . . . . .	<i>Chaplain</i>
DOROTHY DUFFY . . . . .	<i>Registrar</i>
ALBERTA OTTENOT . . . . .	<i>Editor</i>
MISS SMALL . . . . .	<i>Faculty Adviser</i>



PROZELLER, DIVER, FEW, ROCHE, RECH  
DE MOND, LARSON, JEWET, O'DAY, DONOVAN, EWELL, CONSTABLE  
REYNOLDS, MONK, MCNAIR, BORST, MISS HURD, MISS CHAPMAN, GREEN, BRINK, BOLDT, HORA  
ZDARSKY, CARMODY, CLEGG, NESSELBECK, ISAACSON, PETERSON, BEARE, CRUICKSHANK

### Alpha Sigma Tau

#### MEMBERS

EUGENIA BEARE  
DORIS BOLDT  
MARION BORST  
CATHARINE BRINK  
IRMA CARMODY  
MARY CLEGG  
DORIS CONSTABLE  
PEARL CRUICKSHANK  
RUTH DE MOND  
MARGARET DIVER  
DOROTHY DONOVAN  
CAROLYN EWELL  
KATHERINE FEW  
DOROTHY GREEN



JESSIE HARDY  
HAZEL HORA  
AGNES ISAACSON  
EDNA JEWET  
ALICE LARSON  
LORRAINE MONK  
ANNETTA MCNAIR  
VIRGINIA NESSELBECK  
EILEEN O'DAY  
ELSIE PETERSON  
RUTH RECH  
HELEN SUE REYNOLDS  
VIRGINIA ROCHE  
MAE ZDARSKY



AGNES ISAACSON

### Alpha Sigma Tau

#### OFFICERS

AGNES ISAACSON . . . . .	<i>President</i>
JESSIE HARDY . . . . .	<i>Vice-President</i>
VIRGINIA NESSELBECK . . . . .	<i>Recording Secretary</i>
MARY CLEGG . . . . .	<i>Corresponding Secretary</i>
ELSIE PETERSON . . . . .	<i>Treasurer</i>
MAE ZDARSKY . . . . .	<i>Historian</i>
PEARL CRUICKSHANK . . . . .	<i>Custodian</i>
MISS CHAPMAN . . . . .	<i>Faculty Adviser</i>



HOLME, STORMS, HOTH, STRIKER  
 PLANT, KEDDIE, GENTNER, DOELMAN, HEFFLEY  
 MORGAN, MILLER, GRAVES, COWELL, UPSON, BUDDENHAGEN, HOLSTEIN, COURTNEY  
 SPEARS, ALLAN, ECKHARDT, MANSFIELD, MESSINGER, HUBER, MOULTON

### Delta Sigma Epsilon

#### MEMBERS

ADALINE ALLAN  
 RUTH BUDDENHAGEN  
 JOSEPHINE COLBY  
 GRACE COURTNEY  
 NORMA COWELL  
 CANDACE DOELMAN  
 MARJORIE ECKHARDT  
 MARGARET GENTNER  
 HELEN GRAVES  
 MARY HEFFLEY  
 MARIE HOLME  
 HELEN HOLSTEIN



RUTH HOTH

ETHEL HUBER  
 MARY KEDDIE  
 MYRTLE MANSFIELD  
 MARTHA MESSINGER  
 ELSIE MILLER  
 BETTY MORGAN  
 JEAN MOULTON  
 MARY PLANT  
 JEAN SPEARS  
 EDNA STORMS  
 PAULINE STRIKER  
 DOROTHY UPSON



MYRTLE MANSFIELD

### Delta Sigma Epsilon

#### OFFICERS

MYRTLE MANSFIELD . . . . .	<i>President</i>
JOSEPHINE COLBY . . . . .	<i>Vice-President</i>
ETHEL HUBER . . . . .	<i>Treasurer</i>
MARTHA MESSINGER . . . . .	<i>Recording Secretary</i>
MARJORIE ECKHARDT . . . . .	<i>Corresponding Secretary</i>
JEAN SPEARS . . . . .	<i>Historian</i>
ADALINE ALLAN . . . . .	<i>Sergeant</i>
JEAN MOULTON . . . . .	<i>Chaplain</i>
CANDACE DOELMAN . . . . .	<i>Senior Panhellenic Representative</i>
MISS HOUSTON . . . . .	<i>Faculty Adviser</i>



WALLMEYER, COLLINS, INGLESBEE  
RAMSAY, TAUFNER, O'BYRNE, ROTHENMEYER  
SCHMIDT, MALONEY, MRS. NYE, DURANT, KLINE  
MARKMAN, WEBER, KERSTEN, YAEGER, SCHUSTER

### Pi Delta Theta

#### MEMBERS

JANICE COLLINS  
LIDA DURANT  
LUCILLE INGLESBEE  
MARGARET KERSTEN  
THELMA KLINE  
HELEN MALONEY  
HELEN MARKMAN  
MARIAN O'BYRNE



JANE RAMSAY

RUTH ROTHENMEYER  
JANICE SCHMIDT  
DORIS SCHUSTER  
ELVERA TAUFNER  
ANN WALLMEYER  
LAURA WARD  
BETTY WEBER  
MILDRED YAEGER



MARGARET KERSTEN

### Pi Delta Theta

#### OFFICERS

MARGARET KERSTEN	President
BETTY WEBER	Vice-President
MILDRED YAEGER	Second Vice-President
DORIS SCHUSTER	Treasurer
HELEN MARKMAN	Secretary
MARION O'BYRNE	Registrar
JANICE SCHMIDT	Chaplain
LIDA DURANT	Senior Representative
BETTY WEBER	Junior Representative
RUTH ROTHENMEYER	Editor



RENNING, O'MARA  
MERRIMAN, LEVINE, RINDONE, OWENS, PILSON  
NEILL, DALEY, SLATER, MISS MC MAHON, SWARTZ, EARLL, FOISSET  
SHETLER, MURPHY, STEINBACH, REYNOLDS, WESTCOTT, NORTON, WOODS

### Pi Kappa Sigma

#### MEMBERS

MARION BAUMGARTEN  
ESTHER BLISS  
VIRGINIA DALEY  
ALICE EARLL  
MARGARET FOISSET  
RUTH LEVINE  
WILHELMINE MERKLE  
BETTY MERRIMAN  
MARIE MURPHY  
MARY NEILL  
EVELYN NORTON  
MARGARET O'MARA



CATHERINE OWENS

ELIZABETH PILSON  
THELMA RENNING  
BERTHA REYNOLDS  
MARY RINDONE  
BEATRICE ROSEBROCK  
VIRGINIA SHERET  
FRANCES SHETLER  
CLARIBEL SLATER  
HELEN STEINBACH  
BERTHA SWARTZ  
HELEN WESTCOTT  
MARGARET WOODS



BERTHA REYNOLDS

### Pi Kappa Sigma

#### OFFICERS

BERTHA REYNOLDS	President
HELEN STEINBACH	Vice-President
MARION BAUMGARTEN	Recording Secretary
MARIE MURPHY	Corresponding Secretary
MARGARET WOODS	Corresponding Editor
HELEN WESTCOTT	Treasurer
EVELYN NORTON	Press Agent
FRANCES SHETLER	Keeper of Archives
WILHELMINE MERKLE	Sergeant-at-Arms
Miss McMAHON	Faculty Adviser



DYKSTRA, FISHER, TORRENCE, GORMAN, WENDE  
ALVORD, BRACKETT, BLYTH, CHALMERS, RUTLAND, ROSE  
MISS ROEHSLER, BIESINGER, SCHARLOCK, GARRETT, SWEENEY

### Sigma Sigma Sigma

#### MEMBERS

LOUISE ALVORD  
ELEANOR BIESINGER  
RETA BLYTH  
KAROLYN BRACKETT  
BEATRICE CHALMERS  
GERALDINE CORCORAN  
FRANCES DYKSTRA  
ALICE FISHER  
DOROTHY GARRETT  
HELEN GORMAN



GRACE LESHER  
VIRGINIA ROSE  
CLAIRE RUTLAND  
ELEANOR SCHARLOCK  
ANITA SENEAL  
KATHRYN SWEENEY  
JANE TORRENCE  
KATHARINE VAN LOAN  
BERNARDINE WENDE  
VIRGINIA WHETSTONE



ELEANOR SCHARLOCK

### Sigma Sigma Sigma

#### OFFICERS

ELEANOR SCHARLOCK . . . . .	<i>President</i>
DOROTHY GARRETT . . . . .	<i>Vice-President</i>
ELEANOR BIESINGER . . . . .	<i>Treasurer</i>
ANITA SENEAL . . . . .	<i>Corresponding Secretary</i>
GRACE LESHER . . . . .	<i>Recording Secretary</i>
KATHRYN SWEENEY . . . . .	<i>Keeper of Grades</i>
BEATRICE CHALMERS . . . . .	<i>Sentinel</i>
MISS ENGLEBRECK } MISS ROEHSLER }	<i>Faculty Advisers</i>





SNYDER, PAGE, KERN, MRS. KIDENEY, STARR, MEAD, O'DONOGHUE  
GLASSER, SLATER, WILSON

### Theta Sigma Upsilon

#### MEMBERS

DOROTHY GLASSER  
VIRGINIA KERN  
INA MEAD  
LILIANE O'DONOGHUE



FRANCES PAGE  
GLADYS SLATER  
HAZEL SNYDER  
MILDRED STARR

NORMA WILSON



GLADYS SLATER

### Theta Sigma Upsilon

#### OFFICERS

GLADYS SLATER	President
DOROTHY GLASSER	Vice-President
VIRGINIA KERN	Treasurer
FRANCES PAGE	Senior Representative
NORMA WILSON	Junior Representative



MOULTON, CONSTABLE, DIVER  
CARMODY, DU RANT, LEVINE, MISS CAUDELL, DALY, STEINBACH, DOELMAN  
BLISS, MITCHELL, BUDDENHAGEN, KERSTEN

Phi Upsilon Omicron

MEMBERS

RUTH BUDDENHAGEN  
ESTHER PARTU BLISS  
IRMA CARMODY  
DORIS CONSTABLE  
MARGARET DALY  
MARGARET DIVER  
CANDACE DOELMAN



LIDA DU RANT  
MARGARET KERSTEN  
RUTH LEVINE  
EDNA MITCHELL  
JEAN MOULTON  
HELEN STEINBACH  
PAULINE STRIKER



RUTH BUDDENHAGEN

Phi Upsilon Omicron

OFFICERS

RUTH BUDDENHAGEN	President
ESTHER PARTU BLISS	Vice-President
MARGARET KERSTEN	Secretary
PAULINE STRIKER	Treasurer
DORIS CONSTABLE	Chaplain
IRMA CARMODY	Editor
JEAN MOULTON	Historian



LYNCH, EATON, TUCHOLSKI  
BUTLER, BURKE, BENNETT, ARMSTRONG  
MANISCALCO, CRAINE, FONTANA, CECIL, MONTELONE  
EVANS, THOMAS, FRANK, HUPP, BATTAGLIA

### Kappa Kappa Kappa

#### MEMBERS

WILLIAM ANDERSON  
CLARE ARMSTRONG  
JOHN BATTAGLIA  
EVERETT BENNETT  
LESTER BURKE  
JOHN BUTLER  
LOUIS CECIL  
JOHN CRAINE  
ARTHUR EATON  
JOHN R. EVANS  
MARIO FONTANA



EUGENE FRANK  
GLEESON HUPP  
EDWIN KIRK  
NORBERT LYNCH  
SALVATORE MANISCALCO  
THOMAS MONTELONE  
HARRY SALMON  
WILLIAM SCHILL  
EARL SENGBUSH  
RALPH THOMAS  
FRED TUCHOLSKI



EUGENE FRANK

### Kappa Kappa Kappa

#### OFFICERS

EUGENE FRANK	President
WILLIAM SCHILL	Vice-President
JOHN R. EVANS	Treasurer
GLEESON HUPP	Secretary
RALPH THOMAS	Corresponding Secretary
LOUIS CECIL	Chaplain
JOHN BATTAGLIA	Sergeant-at-Arms
ARTHUR EATON	Grand President
EVERETT BENNETT	Grand Treasurer



BUSH, SCHRIER, TELLER, EDDY  
ROBERTS, MOREY, BROWN, BAUMLER, GRIFFIN, BORKOWSKI  
SZARLACKI, ORENTURF, QUACKENBUSH, HUCKINS, PHILLIPPI, BANKS, BENNETT  
SULLIVAN, WILLIAMS, MURPHY, WILLIS, LEWIS

Psi Phi  
MEMBERS

HAROLD BANKS  
WILLIAM BECKER  
F. GORDON BENNETT  
JOSEPH H. BORKOWSKI  
LYALL BUSH  
GORDON EDDY  
RUSSELL GRAUER  
PAUL GRIFFIN  
GEORGE HATCH  
ANTHONY KRZYZANOWSKI  
KEITH LEWIS



JOHN MCCREADY

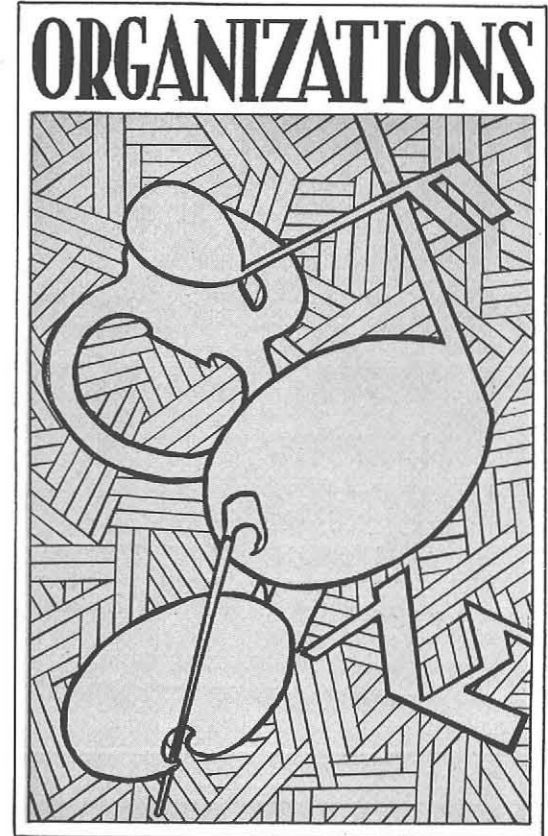
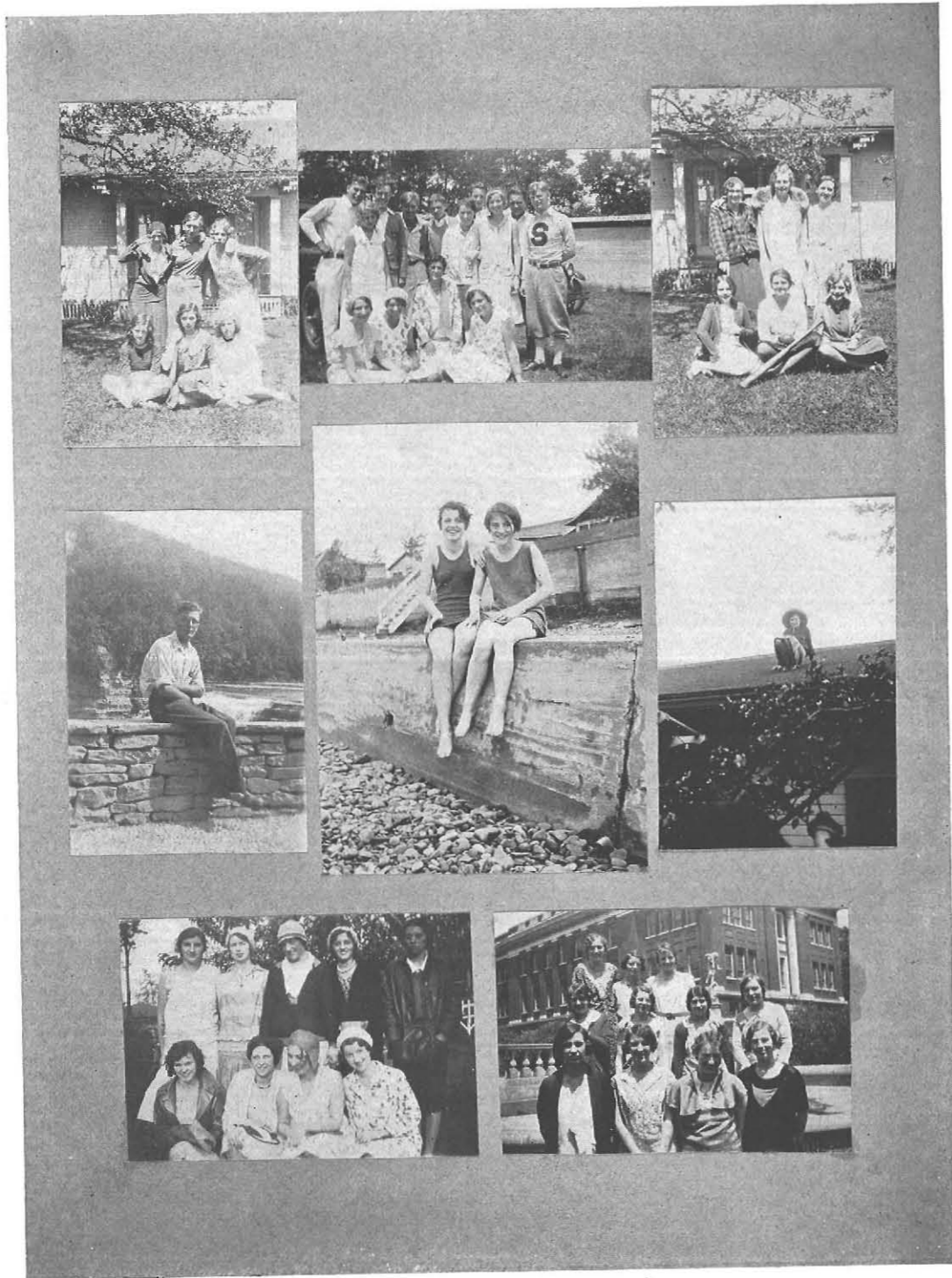


GEORGE MURPHY

Psi Phi

OFFICERS

H. GEORGE MURPHY	President
PAUL WILLIAMS	Vice-President
ARTHUR WILLIS	Corresponding Secretary
WILLIAM J. BECKER	Financial Secretary
KEITH LEWIS	Treasurer
WILLIAM PIKE	Chaplain
EDWARD L. SZARLACKI	Sargeant-at-Arms
JOSEPH H. BORKOWSKI	Editor





FOX, BORKOWSKI, WILLIS, WIEDEMAN, RAMSAY  
DALEY, SNYDER, OTTENOT, STABY, NAGLE, MURPHY, ALFANO  
RALPH, RILEY, WENDE, RUTLAND, BURNES

### The Elms Staff

#### ASSISTANTS

##### *Art and Photography*

BEATRICE ROSEBROCK

PAULINE FOX

HOWARD WIEDEMAN

##### *Literary*

RUTH ROTHENMEYER

MARIE ALFANO

MARIE HOLME

##### *School News*

ALBERTA OTTENOT

GEORGE MANN

##### *Business*

DORA STABY  
VIRGINIA DALEY

ADA SNYDER  
MARIE MURPHY  
ARTHUR WILLIS

JANE RAMSAY  
MILDRED NAGLE

##### *Typist*

CHARLOT MOEHLAU



MARIAN RILEY



BERNARDINE WENDE

### The Elms Staff

#### EDITORIAL BOARD

BERNARDINE WENDE	Editor-in-Chief
MARIAN RILEY	Business Manager
DOROTHY RALPH	Art and Photography Editor
CLAIRE RUTLAND	Literary Editor
MARION BURNES	School News Editor
MISS KEMPKE	Faculty Adviser



DETRICK, FRANK, SIEGEL, LYNCH, WILLIS, YORK  
DONOVAN, HENDERSON, SPEARS, MC GAMWELL, GOFF, SIMON, SPAULDING, HOGAN  
SCHULTZ, CANADA, FOX, MAUTE, GRIFFIN, DOELMAN, JOHNSTON, GRABENSTATTER, FRANK,  
THOMAS, DONAHUE, DOUGLASS, STRIKER, COPPOLA, KIRK, KIRSHNER

The Record

ASSISTANTS

- |                  |                   |                  |
|------------------|-------------------|------------------|
| GRETCHEN SCHULTZ | PAULINE FOX       | EVA MAYER        |
| MARY HOGAN       | VIRGINIA ESTERHAY | MARGARET GOFF    |
| MARY PLANT       | CLARA CORRITORE   | MARJORIE GRIFFIN |
| CANDACE DOELMAN  | ALICE DONOVAN     | MILDRED LEVITAN  |
| MARGARET GOFF    | MARGARET GRENTNER | HELEN JOHNSTON   |
| JEAN SPEARS      | JANET MACGAMWELL  | JOSEPH BARKAWSH  |
| ETHEL ROKITA     | ELIZABETH MURPHY  | ARTHUR WILLIS    |
| JEAN CANADA      | MARY MONOGHAN     | LESLIE DETRICK   |
| MARJORIE GRIFFIN | RUTH ROTHENMEYER  | NORBERT LYNCH    |

TYPISTS

- |                     |                     |                   |
|---------------------|---------------------|-------------------|
| ETHEL GRABENSTATTER | LORRAINE FRANK      | AUDREY HENDERSON  |
| DOROTHY SMITH       | WIONA SIMON         | THOMAS MANTELCONE |
| THERESA PENFILI     | VINCENZO COLLISCHIA | RUTH DRENNER      |
|                     | MARIE MAUTE         |                   |



THERESA COPPOLA



PAULINE STRIKER

The Record

STAFF

- |                             |                  |
|-----------------------------|------------------|
| E. PAULINE STRIKER          | Editor           |
| HARRY S. DOUGLASS           | News Editor      |
| LILLIAN DEEMER              | Literary Editor  |
| ARTHUR YORK<br>RALPH THOMAS | Feature Editors  |
| FLORA DONAHUE               | Comment          |
| EDWIN KIRK                  | Sports Editor    |
| EUGENE FRANK                | Sports Assistant |
| ABRAHAM SIEGEL              | Art Editor       |
| THERESA COPPOLA             | Business Manager |
| MAX KIRSHNER                | Circulation      |
| JOSEPH HOFFLER              | Proof Reader     |



VIRGINIA GANGLOFF

### Student Handbook Committee

VIRGINIA GANGLOFF, *Chairman*

IRMA GROTKE

LESTER HANNAN

VERNA MARSHALL

ELIZABETH MURPHY

CHARLES SCHILLING



MARY HEFFLEY



EUGENE FRANK

### N. S. F. A.

THE National Student Federation of America held its sixth Annual Congress at Atlanta, Georgia, with Agnes Scott College and Georgia Tech as hosts, from December 29, 1930 to January 2, 1931.

Two delegates from State Teachers College met with about three hundred students representing two hundred and seventy-five colleges and universities throughout the country.

The president of the Federation, Mr. Edward Murrow, sounded the keynote of the congress as a linking-up of emotional enthusiasm and a hard-headed, dynamic drive toward a definite object.

A new National board of advisers was elected to act as liaison between students and the outside world.

Noteworthy accomplishments of the Federation during 1930 include the bringing to America of four foreign debating teams; the inauguration of a Weekly News Release; and twice weekly broadcasts through the courtesy of the Columbia Broadcasting System.

An information bureau has been started for the purpose of shedding light on problems which arise in various college situations. Foreign students are receiving consideration, and much work is being done in that line, as well as that of student travel to Europe and other continents.

Problems of world-wide interest: the tariff, prohibition, and unemployment constituted the three main issues of the sixth annual Congress.

Next year "State" plans to be well represented at the seventh annual conference during the Christmas holidays at the University of Toledo, Toledo, Ohio.





EDDINGER, EIGENBROD, FRANK, BUSH  
HEFFLEY, WENDE, STRIKER, BAUMGARTEN, BELLANCA  
ISAACSON, MISS THOMAS, DR. NEUMANN, DEAN REED, MR. BRADLEY, GANGLOFF, MARLEY  
EDDY, RALPH, MOULTON, SCHARLOCK, YORK

### Executive Council of Students' Association

#### OFFICERS

JEAN MOULTON	<i>President</i>
GORDON EDDY	<i>Vice-President</i>
ARTHUR YORK	<i>Secretary</i>
MARGARET RALPH	<i>Treasurer</i>



JEAN MOULTON

### Executive Council of Students' Association

FRANCES BELLANCA	<i>Elections</i>
LYLE BUSH	<i>Section</i>
DOROTHY MARLEY	<i>Discipline</i>
MARION BAUMGARTEN	<i>N. S. F. A.</i>
VIRGINIA GANGLOFF	<i>Handbook</i>
MARY HEFFLEY	<i>Student Assembly</i>
PAULINE STRIKER	<i>"Record" Editor</i>
BERNARDINE WENDE	<i>ELMS Editor</i>
JOHN EIGENBROD	<i>A. A. President</i>
NORMAN EDDINGER	<i>Scholarship Representative</i>

#### COUNCIL RE-ELECTIONS

EUGENE FRANK	ELEANOR SCHARLOCK	AGNES ISAACSON
--------------	-------------------	----------------

#### FACULTY ADVISERS

DEAN REED	MR. BRADLEY
DR. NEUMANN	MISS THOMAS



Orchestra

Laura Longaker	President
Gladys Reid	Secretary-Treasurer
Alvin Kesler	Librarian
Florence Dominic	Assistant Librarian

Orchestra

MEMBERS

*Violins*

Alice Fisher  
 Laura Longaker  
 Amelia Suppes  
 Henry Richards  
 Gladys Reid  
 Virginia Roth  
 Evelyn Haroney  
 Adeline Krauskopf  
 Helen Steinbach  
 Mary Powers

Harold Lindner  
 Irene Griffin  
 Florence Dominic  
 Marion Johnson  
 Marvin Pitterman  
 Carl Wright  
 Lillian Nolan  
 Esther Kahler  
 Edward Schultz  
 Harriet Nuller

*Clarinets*

Mary Neelon

Joseph Muni

Anthony Todaro

*Flutes*

Marion O'Byrne

Joyce Dunkelberger

*Cello*

Ruth Dunkelberger

Martin Brophy

*French Horn*

Lester Hannan

Maurice Sullivan

*Cornet*

Lucille Sallack

Joseph Alienduiger

Alvin Kesler

*Piano*  
 Vivian Schultz

*Trombone*  
 Jane Searle

*Drums*  
 John McCready



Senior Girls' Glee Club

OFFICERS

RUTH CARMAN . . . . .	<i>President</i>
RUTH BREMS . . . . .	<i>Vice-President</i>
DORIS BECKER . . . . .	<i>Secretary</i>
MARGARETTA KERSPERSKE . . . . .	<i>Treasurer</i>
MISS SPEIR . . . . .	<i>Director</i>

Senior Girls' Glee Club

MEMBERS

*First Soprano*

ANNA BLOOM	ROSE GOODMAN	JOSEPHINE MAGGIO
PAULINE BOTTY	MARY HEFFLEY	ELIZABETH MORGAN
MARY BRADY	HAZEL HORA	MARY O'NEILL
GRACE CRANE	ETHEL HUBER	GLADYS REID
LEONA DAVIS	BERNICE KAISER	FREDA REUTER
CANDACE DOELMAN	MARY KEDDIE	MARY RUSSELL
FLORA DONAHUE	MARGARETTA KERSPERSKE	ELVERA STRACHAN
MARGARET FOISSET	RUTH LEE	ELIZABETH WEBER
MARGARET GUENER		NORMA WILSON

*Second Soprano*

THELMA CORCORAN	GERTRUDE CONNORS	AILEEN MORRISON
DORIS BECKER	MARJORIE ECKHARDT	JANE RAMSEY
DORIS BOLDT	LORRAINE FRANK	LUCILLE SALLACK
HELEN BOYLE	ETHEL GRABENSTATTER	ANNE SCHMUCKLER
RUTH BREMS	HELEN HOLSTEIN	JANE SEARLES
VIRGINIA CONDON	MARGARET IVANCIC	FRANCES SHETLER

*Alto*

JOSEPHINE ACKERMAN	HELEN HUNT	MARY RINDONE
ADALINE ALLAN	EMANELLA METZ	RUTH SALLACK
RUTH CARMAN	VIOLET NOTTER	ROMAYNE SHALLER
RUTH DUNKELBERGER	EVY OTS	JEAN SPEARS
ALICE FISHER	MARGARET RALPH	EDITH ST. JOHN
MARIE HOLME		ETHEL ZUBKOFF



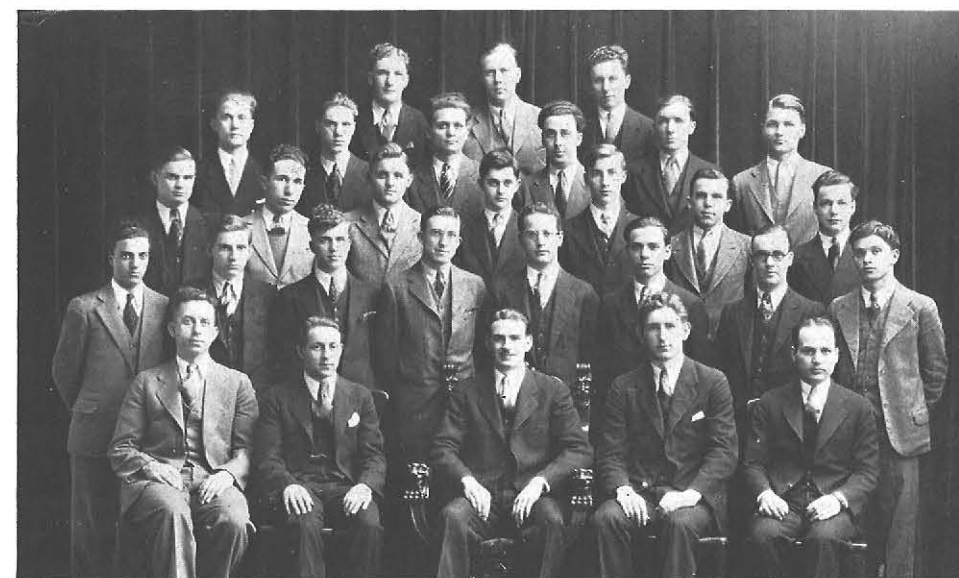
### Junior Girls' Glee Club

HORTENSE O'DELL. . . . . *President*    ANGELA DALEY . . . . . *Treasurer*

HELEN BONERB . . . . . *Vice-President*    RUTH DAGGETT . . . . . *Secretary*

#### MEMBERS

VIRGINIA AUSTIN	JENNIE DOMICO	AILENE MARVIN	RUTH PHILLIPS
HELEN BAHLER	RUTH DRENNEN	MARIE MAST	GERALDINE ROWLEY
RITA BLYTH	RUTH GELLMEN	ELIZABETH McCLATCHY	MARIAN RICKARD
HELEN BONERB	ALICE GERVEN	DOROTHY MAYO	HAZEL SCHUESCHLER
GENEVIEVE BRINK	DOROTHY GLASSER	FRANCES MORAN	FRANCES SCIBETTA
MARIE CARTER	DORIS HOLCOMB	FREDA MEYER	WINONA SIMON
VINCENZA COLICCHIA	BERNICE HELFER	LOIS MILLER	ELSIE SLATER
EILEEN COOK	ROBY HYDE	MARJORIE MORELAND	BERNICE STORMS
ELSIE CURTISS	MERJUM KREASON	DOROTHY NIXON	VIRGINIA SMITH
JANET CROMWELL	DOROTHY KROG	HORTENSE O'DELL	STEPHONIA ZAJACZEK
RUTH DAGGETT	OLIVE LA BUE	ELSAJEAN PANKOW	BERTHA SWARTZ
ANGELA DALEY	FLORENCE LEVENDOSKI	VIRGINIA PARR	



STUMPF, LEWIS, KOCH  
WILSON, EDDY, MURPHY, BROPHY, PAXSON, KOENIG  
ORENTURF, KERCHENBAUM, RESTORFF, FOSTER, LINDNER, DIETRICH, BALDWIN  
GIANBELVED, DOBBINS, MILLER, RUSSELL, SHANKER, BITTERMAN, THORPE, PATTI  
HUTCHINSON, SULLIVAN, CRAINE, MANLEY, MANISCALCO

### Men's Glee Club

#### OFFICERS

JOHN CRAINE . . . . . *President*  
FRANCIS MANLEY . . . . . *Vice-President*  
SALVATORE MANISCALCO . . . . . *Secretary and Treasurer*

#### MEMBERS

M. BITTERMAN	FRED KOCH	JOSEPH PATTI
JOHN CRAINE	GEORGE KOENIG	EDWARD PAXSON
LESLIE DETRICK	HAROLD LINDNER	IRVING RESTORFF
DONALD DOBBINS	SALVATORE MANISCALCO	LEONARD RUSSELL
HOWARD GEORGE	FRANCIS MANLEY	HARRY SIMONTON
SAMUEL HANDLER	WILLIAM MARTIN	HERBERT STUMPF
WESLEY HUTCHINSON	ELMER MILLER	ALBERT THORPE
JOSEPH KERCHENBAUM	H. GEORGE MURPHY	FRANCIS WIERZBOWSKI



RUSSELL, RESTORFF, MANLEY, BALDWIN, MILLER  
 RICHARDS, FARBER, MURPHY, GARNISH, BOLTON, METS, PATTI  
 LYNCH, DAGGETT, CHISLEY, BRANDT, NIXON, BURGESS, DAVIS, LONGAKER  
 BIANDELLO, WAGNER, COATS, BOTTY, FRIED, KOCH, MISS GOOSSEN

### Dramatic Club

#### OFFICERS

PAULINE BOTTY	President
FRED KOCH	Vice-President
NELSON BIONDOLILLO	Treasurer
LAWRENCE BUTLER	Corresponding Secretary
DAVID COOTS	Recording Secretary
SARAH FREED	Publicity Agent
ETHEL WAGNER	Sargeant-at-Arms



LONG, COOK, BRINK  
 SIMSON, LOREE, MILLER, HALL, HOUSTON, BRACKETT  
 AUSTIN, CARMICHAEL, OSTREJNSKI, LEINS, KOREY, HOGAN, PERRY  
 WIERZBOWSKI, RENNING, WOJTOWICZ, FOX, NEIDERPRUEM, REYNOLDS, RILEY

### Art Kraft Klub

#### OFFICERS

PAULINE FOX	President
THELMA RENNING	Vice-President
IRENE WOJTOWICZ	Secretary
MARY REYNOLDS	Corresponding Secretary
MARION NEIDERPRUEM	Treasurer

#### MEMBERS

NEVA AUSTIN	KATHERINE HALL	HARRIET MILLER
CONSTANCE BAECHER	MARY HOGAN	HELEN OSTREJNSKI
L. BORKOWSKI	EDITH KELVER	DOROTHY RILEY
KAROLYN BRACKETT	AGNES KOREY	FRANCES STROOD
GENE BRINK	RUTH LEINS	HOWARD WEIDEMANN
RUTH CARMICHAEL	MARION LONG	HELEN WORCESTER
	GERALDINE LOREE	



Y. W. C. A.

OFFICERS

CANDACE DOELMAN	<i>President</i>
THELMA CORCORAN	<i>Vice-President</i>
JEAN SPEARS	<i>Treasurer</i>
ORCADA SINCLAIR	<i>Secretary</i>

FACULTY ADVISERS

MISS TURNER	MISS DUPRE	MISS THOMAS
-------------	------------	-------------



CANDACE DOELMAN

Y. W. C. A.

CABINET

JENORA BENTLEY	<i>Program</i>
DORIS BOLDT	<i>Membership</i>
THELMA RENNING	<i>Publicity</i>
RUTH BUDDENHAGEN	<i>Finance</i>
ALICE KINNE	<i>World Fellowship</i>
RUTH DUNKELBERGER	<i>Religious Education</i>
MARY RINDONE	<i>Song Book</i>
MARY PLANT	<i>"Record" Reporter</i>



GRAVES, CRACKEN, WALDEN, HARDY, DALY, NEEDHAM  
MORGAN, ROCHE, LEVINE, COURTNEY

### Home Economics Club

#### OFFICERS

RUTH LEVINE	President
VIRGINIA ROCHE	Vice-President
BETTY MORGAN	Treasurer
GRACE COURTNEY	Secretary
MISS KEEVER	Faculty Adviser

#### CABINET

JESSIE HARDY  
ALICE LARSON  
MARGARET DALY  
NELLIE WALDEN

DOROTHY UPSON  
HELEN GRAVES  
LOUISE MACCRACKEN  
JANET NEEDHAM



### Nu Lambda Sigma

#### OFFICERS

COLETTE SHEEDY	President
GERALDINE RANKINS	Vice-President
MARGARET BUNCE	Treasurer
RUTH DUNKELBERGER	Recording Secretary
MILDRED YAEGER	Corresponding Secretary

#### MEMBERS

WINIFRED ALLEN  
ETHEL BLEY  
MARGARET BUNCE  
JOSEPHINE COLBY  
RUTH DUNKELBERGER  
LILLIAN DEEMER  
CANDACE DOELMAN  
RUTH ECKHARDT  
VIRGINIA GANGLOFF  
EVELYN HARONEY

THELMA HECK  
RUTH HOTH  
AGNES ISAACSON  
MARY KEDDIE  
EVELYN NORTON  
GERALDINE RANKINS  
COLETTE SHEEDY  
JEAN SPEARS  
ANN WALLMEYER  
MILDRED YAEGER



### Non-Residents' Association

#### OFFICERS

LILLIAN O'DONOGHUE	President
MARY LEWIS	Vice-President
MILDRED STARR	Secretary
RUTH HEELAS	Treasurer

#### CLASS REPRESENTATIVES

ADELINE STEELE	Home Economics
GRACE HEWITT	Freshmen
EDITH ST. JOHN	Sophomore
INA MEAD	Junior Degree
LILLIAN GREER	Senior

### Current Events Club

#### OFFICERS

ELINOR MAEDER	President
ALFREDA PUGELL	Vice-President
HAZEL HESSINGER	Secretary
GERTRUDE GAVIN	Corresponding Secretary
HAZEL ELLER	Treasurer
DR. CRANSTON	Faculty Adviser

#### MEMBERS

GRACE BALDWIN	LILLIAN GREAR
FLORENCE BARNACK	ROSE GROSS
FRANCES CISZEK	HAZEL HESSINGER
CLARA CORRITORE	MARJORIE HOGUE
RAFFAE DE ANGELIS	MARGARET LAHIFF
ALICE DEHECK	ELINOR MAEDER
AGNES EAGON	EVELYN MURNEY
HAZEL ELLER	ANNE O'MALLEY
CATHERINE FRAWLEY	ALFREDA PUGELL
GERTRUDE GAVIN	VERONICA WHALEN

MARGARET WOODS





# ATHLETICS

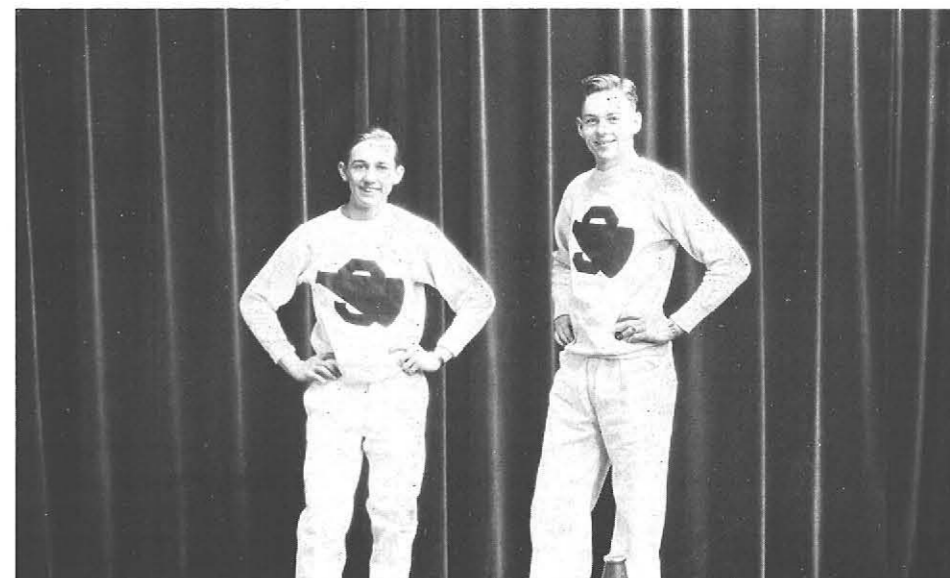
A stylized graphic design for the 'ATHLETICS' section. It features a large, bold, serif letter 'S' in the center. The background is a complex, geometric pattern of intersecting lines and circles, creating a woven or maze-like effect. The entire design is enclosed in a rectangular border.



MR. GRABAU                      EIGENBROD  
MISS HOUSTON              EARLL

### Athletic Association

JOHN EIGENBROD	. . . . .	<i>President</i>
ALICE EARLL	. . . . .	<i>Secretary-Treasurer</i>
MISS HOUSTON	}	<i>Faculty Advisers</i>
MR. GRABAU		



MANN                      SIMONTON

### The Athletic Association

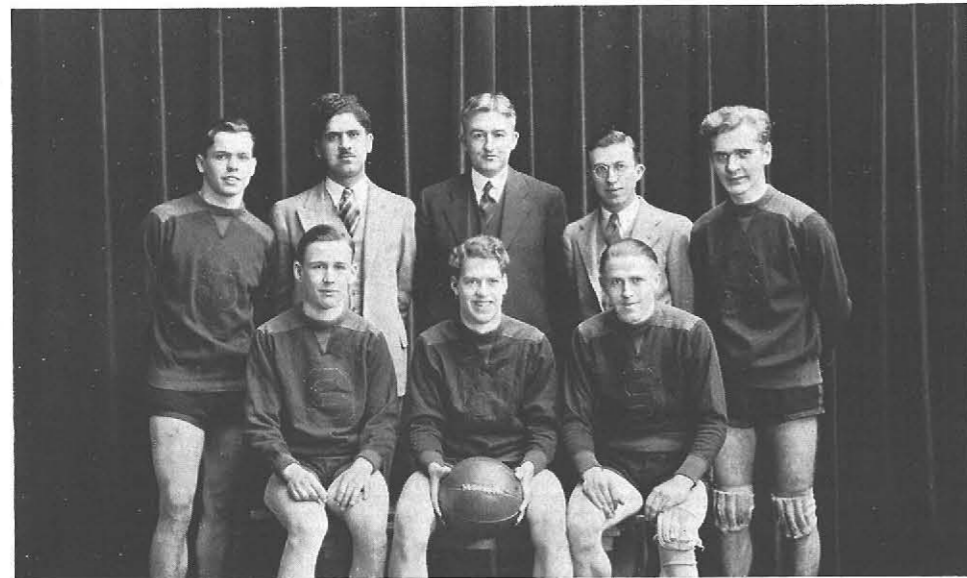
SINCE its inception more than a decade ago, the Athletic Association has guided and managed the sports program of the State Teachers College. During that period, it has successfully carried out the established program, while, at the same time, it has been instrumental in the introduction of several new forms of athletic endeavor.

Membership in this organization becomes automatic when the Blanket tax is paid at the opening of each semester. Thus all regularly registered students are eligible to participate in sports and to attend all home games of the school teams.

Almost all of the authority of this body is vested in a Board of Control, consisting of a President and Secretary-Treasurer, each of whom is elected from the student body at large; and two members of the Faculty—one having direct connection with women's athletics and one responsible for the men's activities. This group, meeting whenever there is direct necessity, decides on the policies to be followed in all intercollegiate contests in which State is a participant, on the eligibility of team members and on matters affecting the entire athletic situation in general.

It also has jurisdiction in the awarding of letters, emblems and insignia as rewards for services rendered.

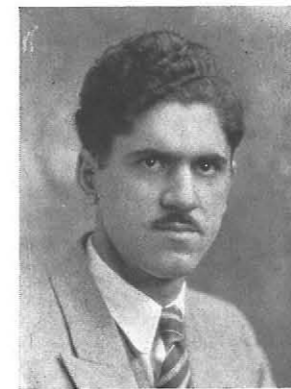
—JOHN H. EIGENBROD



SANFORD, BATTAGLIA, BRABAU, RUSSELL, KETCHAM  
YORK, SCHILL, CLUGSTON

## Basketball S 1930-1931

KENNETH CLUGSTON	Forward
ARTHUR YORK	Forward
WESLEY KETCHAM	Guard
DAVID SANFORD	Guard
WILLIAM SCHILL	Center
SUBSTITUTES	
WILLIAM PIKE	Center
MAX SAMUELS	Forward
DANIEL PAOLUICCI	Forward



BATTAGLIA



SCHILL



RUSSELL

## Varsity Basketball, 1930-1931

MR. GRABAU	Coach
WILLIAM SCHILL	Captain
JOHN BATTAGLIA LEONARD RUSSELL	Managers

### SCHEDULE

December 5	State 19	University of Buffalo	54
December 13	State 26	Canisius	32
December 17	State 27	Niagara	43
December 20	State 33	Alumni	29
January 10	State 17	Brockport	24
January 14	State 35	Fredonia	19
January 16	State 19	Geneseo	23
February 13	State 20	Brockport	31
February 20	State 24	Mechanics Institute	38
February 21	State 47	Geneseo	29
February 25	State 24	Fredonia	57
February 27	State 25	Canisius	54
Total	316		433

## Varsity Basketball

THE basketball quintet wearing the orange and black of State have always been regarded in the highest light by its opposing teams. Intense interest and catchy enthusiasm have been manifested this year in our hardwood court contests by the team, the students, and ardent sport devotees of the locality.

Approximately fifty willing candidates for positions on the team answered Coach Grabau's signal for the resumption of winter's favorite indoor sport. Among these were three lettermen, Schill, Clugston, and York, the almost intact reserve team of the past season, and a large number of freshmen. With this excellent material, a good season was anticipated.

After many long weeks of practice, the team played its opening game with U.B. at the Elmwood Music Hall. There were the usual deficiencies of opening games. Coach Grabau experimented with several substitutes but he soon decided upon the following line up; Pike at center, York and Schill as forwards, and Clugston and Ketcham as guards. However, State was outclassed and lost to the strong University team.

Then followed many thorough practices for the Canisius game. Again the Orange and Black lost, but this time by a slim margin of points in one of the most hotly contested games ever staged in Canisius Gym.

Finally the Varsity came into its own when it defeated the Alumni by a score of 33-29. Harry Abate led the Alumni score with ten points, while Clugston and Schill ran away with the honors of the Varsity with four baskets apiece. This was the last game played in the old gym and closed the school's athletic activities forever in the old college on Normal Avenue.

Soon after this the team journeyed to Brockport where they lost another close game with a score of 24-17. This game was one of those rough and tumble affairs with plenty of hard play. Many of the reserve men broke into print.

Next came the climax of the season, the first game in the new gym. Before a huge crowd, State Teachers came to the front when it defeated Fredonia Normal 35-19. At this game an entirely new line up was used by State. Schill was shifted to center with York and Clugston as forwards, and two freshmen, Sanford and Ketcham as guards. Ketcham and Clugston starred, each making a total of eleven points. The team showed a vast improvement in form and a powerful passing attack.

A few days later State played host to Geneseo's Five. After getting a comfortable lead the team relaxed and lost in a close contest of 23 to 39, when the Normal Boys made a last minute scoring. Friday, February thirteenth, was an unlucky day for State Teacher's Courtmen

when they were defeated by Brockport Normal 31 to 20 in a loosely played game in our new gym. It later developed into what might be called a foul shooting contest. Many players went to the showers via the personal foul route.

On Friday, February 20, State played a spectacular game with Mechanics Institute of Rochester. State boys once more showed their excellent passing attack, but they were out-classed by Mechanics, and lost by a score of 38-24.

The next night, State met Geneseo Normal for a second time and this time defeated them with a score of 47-29. It was a sensational battle, showing a brilliant display of passwork and accurate shooting.

Wednesday, February 25, the State team and a strong body of students went to Fredonia to compete once more with the Normal boys. This time they had high hopes of winning, but after a well matched half, the State boys gave out and lost by a large margin. Schill was the only one to star.

The final game of the season was played with Canisius on our gymnasium floor. The team as a whole played very well, but from the beginning it was a losing game. Canisius doubled the score.

Varsity basketball this year has been quite unimpressive. The latter games have been losing ones, but the playing has been marked by a hard drive at true sportsmanship. All this year's players will return next year, and new material has been uncovered which may prove valuable. Everything points now toward a brighter and more successful season next year.





PIKE, KIRK  
SMITH, PECKHAM, TRESCH, SCHRIER, PAXSON, HUPP  
PAOLUCCI, GOLD, SAMUELS

### Reserve Basketball, 1930-1931

MR. GRABAU	Coach
PALUCCI	Captain
GOLD	Manager
SAMUELS	Forward
PAOLUCCI	Forward
TRESCH	Forward
SMITH	Forward
PAXSON	Guard
PECKHAM	Guard
KIRK	Center
SCHRIER	Center

### Reserve Schedule, 1930-1931

December 5	Reserves 13	U. B. Frosh	38
December 13	Reserves 8	Canisius Frosh	23
January 14	Reserves 15	Fredonia Reserves	23
February 13	Reserves 18	Lafayette Community	12
February 16	Reserves 29	Nichols	41
February 19	Reserves 11	Niagara U. Frosh	40
February 25	Reserves 13	Fredonia Reserves	14
February 27	Reserves 12	Canisius Frosh	24

### Reserve Basketball Season, 1930-1931

THE Reserve Basketball Team has been practicing all year with the Varsity Team and offering keen competition against which to match its mettle.

Although the team has not won every game it has played it has gone into the games with true sportsmanship and a sense of fair play.

The Reserves have met such teams as U. B. Reserves, Niagara Frosh, Nichols and Fredonia Reserves. This year's Reserve Team is in part the Varsity Team of next year.

## Baseball, 1930

**T**HE Orange and Black baseball team won three games out of six in the 1930 season. A triumph over our keenest rivals, Fredonia, stands out as the major accomplishment of the team. A double loss was sustained by the team at the hands of Niagara.

The two game series with Brockport was an even split. The State players defeated Brockport at home. When they journeyed to Brockport the decision was reversed.

The final game of the season with Geneseo Normal was won by State.

Coach Eddie Mumenthaller, regardless of the short time he had before the opening of the season, whipped the squad into excellent shape. All the team practice took place at the Front.

The men who won the coveted "S" were Schill, Hatch, Paolucci, Young, Sharrow, Roberts, McDaniels, Fontana, Auchmoody, Homick, Bates (Capt.), Brown, Berg (Manager).

Practice will soon start for the present season and will probably be held on the campus and later on the Delaware Park diamonds. It is planned to have a diamond laid out on the campus. With five regulars back all indications point to an excellent season. Scheduled games are to be played with Niagara, Brockport, Geneseo and Fredonia.

"On to Victory"

## Tennis, 1930

**D**UE to the limited time before examinations the tennis team played only four matches last season; two with Canisius College, one with De Veaux Faculty and one with our own faculty. Both matches with Canisius were lost. The next match with the faculty of De Veaux also found the Orange and Black netmen on the short end of a close score of 13-2. In the final set of games for the season the tennis team defeated the State Teachers Faculty 4-1. Mr. Grabau was the only faculty member to triumph over his opponent.

The players who received their "S" were:

1st singles	BERT MILLER
2nd singles	HAROLD BANKS
3rd singles	EARL SENGBUSCH
1st doubles	HAROLD BANKS AND EARL SENGBUSCH
2nd doubles	DEWEY CALLAN AND BYALY BASHFORD

Coach Grabau has announced that an elimination contest will be held to determine the members of this year's team.

This season's schedule will consist of matches with Niagara University, Canisius College, Geneseo Normal and De Veaux Faculty. Practice will probably take place on the clay courts at Delaware Park. The possibility of tennis courts being erected on the campus and the nearness to the courts at the park should help to stimulate interest in the game.

## Girls' Athletics

**B**ASKETBALL is the major sport in which the girls in S. T. C. take an active part. However, basketball this year has not taken so definite a trend as formerly, because of the long Christmas vacation and the many complications of moving.

The interclass basketball tournament will be one feature of this year's program. Class practices are taking place at definite times. One of the strongest teams to be dealt with is the Sophomore Home Economics team, which incidentally was the Freshman Championship group in 1930.

The climax of the girl's basketball season will be the selection of the two major teams, the Orange and the Black.

Baseball and tennis are the other two prominent sports in the year's schedule. This year baseball and tennis practice are to be provided for by means of indoor courts and diamonds in the gymnasium. Out of doors tennis is to be carried on through use of the municipal courts in Delaware Park.

Swimming and archery are the outstanding sports on the new program for girls. The new swimming pool will afford great opportunity for our girls to develop into expert swimmers. The classes to be organized are to be not only for advanced swimmers but for beginners as well.

Archery is to be instituted in our program as a major sport. It is a type of sport which is gaining in popularity and will have wide appeal for a great many girls.



KENNEY, MOULTON, MANSFIELD, STABY  
ZIEMAN, RALPH

### Senior

### Junior

HELEN BURNS  
JOSEPHINE CRISP  
MARIE HALLORAN  
AUDREY HEIM  
MARION HOPWOOD  
EDNA JEROME  
HELEN JOHNSTON  
BERNICE KAISER  
MARY LEWIS

JOSEPHINE MAGGIO  
HARRIET McCARTIN  
MARGARET McENENY  
MARY MOSHER  
EVELYN MURNEY  
ELIZABETH MURPHY  
MARY PALMISANO  
FLORENCE PHILLIPS

FRANCES ROONEY  
NAHOMA ROSENBLUM  
KATHERINE SECRIST  
ETHEL SIMMONDS  
CLARIBEL SLATER  
DOROTHY SNYDER  
SYLVIA WEINSTEIN  
LOTTIE WIERZBOWSKA  
REGINA WISNIEWSKA



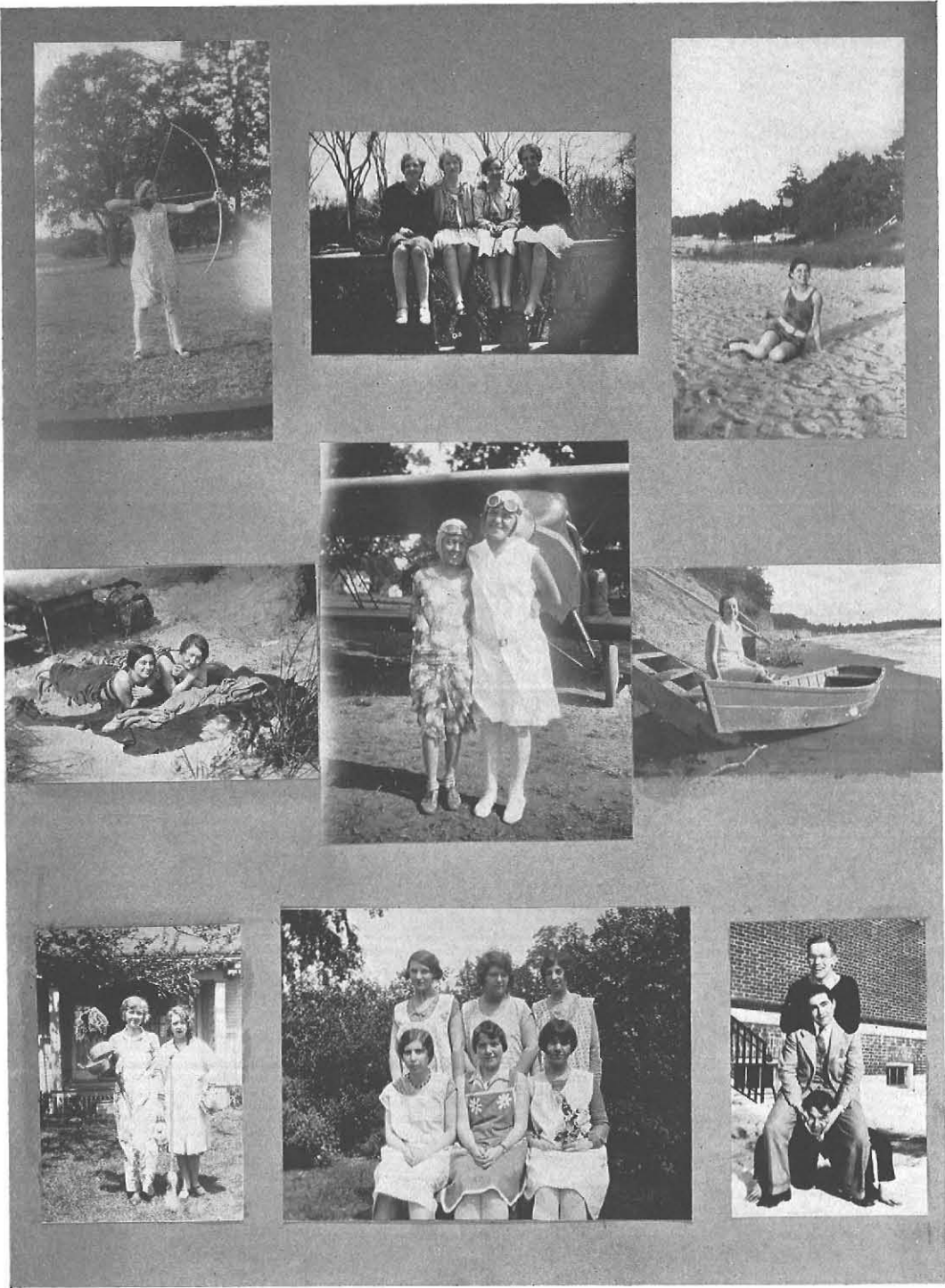
PATOUILLET, NEVILLE, SMITH, MONAGHAN, GENTER, MILLER  
EWELL, DE MOND, ROTH, HENDERSON, TARBROKE

### Sophomore

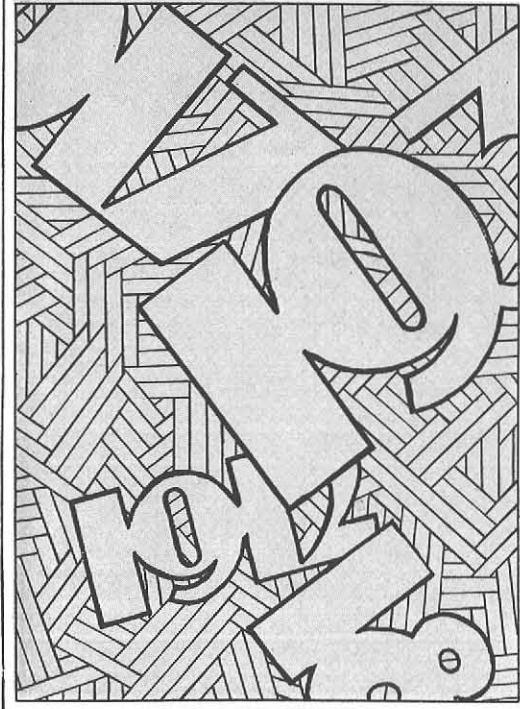
### Freshmen



SLATER, DAMICO, ROTH, KUMPF, SCHROOR, HOWARD, O'NEILL, LILLIS, DAGGETT  
MORAN, SCHUBERT, HOARE, SENGER, HARR, NIXON, THIEROFF, KROG, MORRISON, LATT, MELOON  
BARTLETT, MC CRACKEN, WATERMAN, NEEDHAM, ADAMS, BOOTH, LARSON, HOLCOMBE, FAHEY



# CHRONOLOGY





## Calendar, 1930-1931

### SEPTEMBER

- SEPTEMBER 9 Registration  
20 Glee Club Rummage Sale  
26 Glee Club Candy Sale  
Alpha Sigma Tau Jungle Dance  
29 Non-Residents' Reception  
Home Economics Club White Elephant Sale

### OCTOBER

- OCTOBER 3 Utica Jubilee Singers  
7 Tom Skeyhill lectured in Assembly on Napoleon  
9 Home Economics Party for Freshmen  
10 Student Forum Meeting  
Glee Club sang in New York  
14 Student Control—Teachers' Conference at Syracuse  
16 Nu Lambda Sigma Candy Sale  
21 Captain Kilroy Harris in Assembly  
22 Pi Kappa Sigma Candy Sale  
Nu Lambda Sigma Tea  
23 Faculty Reception for Freshmen  
24 Freshmen Assembly Program  
Home Economics Club Song Dance  
27 Grammar I (second year) Party  
28 Psi Phi Supper  
29 Non-Residents' Association Party  
30 Home Economics Junior Party for Freshmen  
31 Charles Gorst, "The Bird Man" in Assembly

### NOVEMBER

- NOVEMBER 6 Phi Upsilon Omicron Variety Sale  
7 Kappa Kappa Kappa "Ship Ahoy" Dance  
9 Third Year Kindergarten—Primary I Party at Miss Sprague's home  
10 Banner Sale  
12 Second Year Grammar I Candy Sale  
Grammar II Party  
13 Second Year Intermediate Party  
14 John Langdon Davies spoke on American Education  
17 Panhellenic Tea  
Panhellenic Candy Sale  
21 Delta Sigma Epsilon Dream Dance  
25 Alpha Sigma Tau Candy Sale  
Non-Residents' Party  
Dramatic Club Presentation and Dance  
26 Thanksgiving Recess began at noon

### DECEMBER

- DECEMBER 1 College reopened after Thanksgiving Recess  
5 Glee Club Pep Dance  
Basketball—State vs. U. B.  
6 Y. W. C. A. Party  
9 Delta Sigma Epsilon "What Not" Sale  
Men's Club Supper  
12 Alpha Sigma Alpha Bell Hop  
Y. W. C. A. Skating Party  
15 Panhellenic Supper  
18 Sigma Sigma Sigma Holly Sale  
Home Economics Club Xmas Party  
Christmas Recess began  
30 Junior Prom at Twentieth Century Club

JANUARY

- JANUARY 12 Moving Day  
Parade from old school to new  
Housewarming Dance
- 19 *Record* Candy Sale
- 22 Dramatic Club Candy Sale
- 23 Psi Phi Mystery Dance
- 24 Alpha Sigma Tau Card Party in Social Center "A"
- 27 Dramatic Club Candy Sale
- 28 Old Text Book Tea in Social Center "A"

FEBRUARY

- FEBRUARY 2 Examinations began
- 9 New Semester begins
- 13 Alpha Sigma Alpha Candy Sale  
Ben Greet Shakespearean players in Auditorium
- 24 Vocational-Home Economics Party  
Interclass Sing  
N. R. A. Candy Sale
- 26 N. R. A. Supper Party
- 27 Closing basketball game vs. Canisius  
Camera Club Sale

MARCH

- MARCH 3 Musical Clubs Assembly
- 4 Panhellenic Bazaar and Dance
- 6 Junior Degree Party in Social Center  
Dramatic Club Assembly
- 11 Dame Rachel Crowdy spoke on the League of Nations

- 13 Pi Kappa Sigma Dance
- 17 Sweater Dance in Gym
- 20-21 Y. W. C. A. Conference
- 26 Home Economics Club Supper
- 27 Stunt Nite
- 28 N. R. A. Tea Dance

APRIL

- APRIL 1 Easter Recess began
- 9 College reopened after Easter Recess
- 10 Kindergarten-Primary Day  
Psi Phi Convocation Dance  
Pi Delta Theta Candy Sale
- 17 Senior Ball
- 21 Junior Glee Club Candy Sale
- 23-24 Spring Play

MAY

- MAY 2 Theta Sigma Upsilon Dance  
Alpha Sigma Tau Rose Sale
- 7-8 Spring Concert
- 13 Y. W. C. A. Mothers' Tea in Social Center
- 15 Pi Delta Theta Dance  
Undergraduate Dinner
- 22 Home Economics Day

JUNE

- JUNE 8 Exams began
- 16 Commencement



MARLEY, FONTANA, FORD, GOLDE  
EIGENBROD, BELLANCA

### Senior Ball at the Consistory

April 17, 1931

#### COMMITTEE

FRANCES BELLANCA . . . . .	<i>Chairman</i>	VILMA GOLDE . . . . .	<i>Patrons and Patronesses</i>
JOHN EIGENBROD . . . . .	<i>Assistant Chairman</i>	DOROTHY MARLEY . . . . .	<i>Place</i>
MARIO FONTANA . . . . .	<i>Finance</i>	MARGARET RALPH . . . . .	<i>Favors</i>
PAUL FORD . . . . .	<i>Publicity</i>	PAULINE STRIKER . . . . .	<i>Orchestra</i>

#### PATRONS AND PATRONESSES

DR. AND MRS. ROCKWELL	MISS ALLEN
DEAN REED	MISS BACON
EDWARD H. BUTLER	MR. AND MRS. BRADLEY
JOHN M. SATTERFIELD	MISS CAUDELL
A. GLENNI BARTHOLOMEW	MR. AND MRS. CLEMENT
WILLIAM WARREN SMITH	DR. AND MRS. MESSNER
MRS. STEPHEN M. CLEMENT	DR. AND MRS. NEUMANN
WALTER PLATTE COOKE	MR. AND MRS. PERKINS
THOMAS B. LOCKWOOD	MR. AND MRS. ROOT



MURPHY, WENDE, ROSEBROCK, SCHARLOCK, SPEARS  
BAUMGARTEN, YORK, GARRETT

### Junior Prom

#### COMMITTEE

ARTHUR YORK . . . . .	<i>General Chairman</i>
MARION BAUMGARTEN . . . . .	<i>Orchestra</i>
DOROTHY GARRETT . . . . .	<i>Place and Chaperons</i>
BEATRICE ROSEBROCK . . . . .	<i>Finance</i>
ELEANOR SCHARLOCK . . . . .	<i>Programs</i>
MARIE MURPHY . . . . .	<i>Favors</i>
JEAN SPEARS . . . . .	<i>Tickets</i>
BERNARDINE WENDE . . . . .	<i>Publicity</i>

#### PATRONS AND PATRONESSES

DR. AND MRS. ROCKWELL	MR. FONTANA
DEAN REED	MRS. GEMMILL
MISS BACON	DR. AND MRS. MESSNER
	MR. AND MRS. STEEL



HUPP, THOMAS, KIRK, LYNCH, EVANS  
ISAACSON, CARMAN, PAXSON, MARLEY, STABY

## Housewarming Dance

### COMMITTEE

EDWARD PAXSON . . . . . *Chairman Moving Day*  
DOROTHY MARLEY . . . . . *Chairman Dance*

RUTH CARMAN  
AGNES ISAACSON  
ALBERTA OTTENOT  
DORA STABY

GLEESON HUPP  
NORBERT LYNCH  
GLADYS SLATER  
JOHN EVANS

EDWIN KIRK

### PATRONS AND PATRONESSES

DR. AND MRS. ROCKWELL  
DEAN REED  
MISS BACON  
MISS ALLEN  
MISS CAUDELL  
MISS HOUSTON

MISS SALOM  
MISS ROACH  
MR. AND MRS. STEEL  
MR. AND MRS. ROOT  
MR. AND MRS. GRABAU  
MR. AND MRS. PERKINS

## Committees for Graduation

### RING AND PIN

JESSIE HARDY, *Chairman*

GEORGE SWANSON  
JANE RAMSAY

DOROTHY ALLGRIM  
RUTH CARMAN

GLADYS SLATER

### SENIOR BALL

FRANCES BELLANCA, *Chairman*

PAULINE STRIKER  
DOROTHY MARLEY

MARIO FONTANA  
MARGARET RALPH

VILMA GOLDE

### FINANCE

CHARLES SCHILLING, *Chairman*

RUTH BUDDENHAGEN  
MARJORIE ECKHARDT

CLARIBEL SLATER  
LESTER HANNAN

RALPH THEOBALD

### PICTURE

MARIAN RILEY, *Chairman*

JOHN MCCREADY  
MAY ZDARSKY

KATHRYN SWEENEY  
MARION HOPWOOD

DORA STABY

## Class Day

PAULINE BOTTY, *Chairman*

GRACE KLINE  
IRMA CARMODY

DOROTHY RALPH  
MARTHA MESSINGER

MARY RINDONE

### CAP AND GOWN

ELVERA STRACHAN, *Chairman*

ESTHER HALBROOK  
FRANCES SHETLER

DORIS CONSTABLE  
HERBERT STEIN

### INVITATION

MARGARET MARY BURNS, *Chairman*

WILLIAM JACKSON

KATHERINE FEW

### GIFT

ALICE LARSON, *Chairman*

RUTH GRAMPP

RUTH RECH

### FLOWER AND COLOR

ETHEL HUBER, *Chairman*

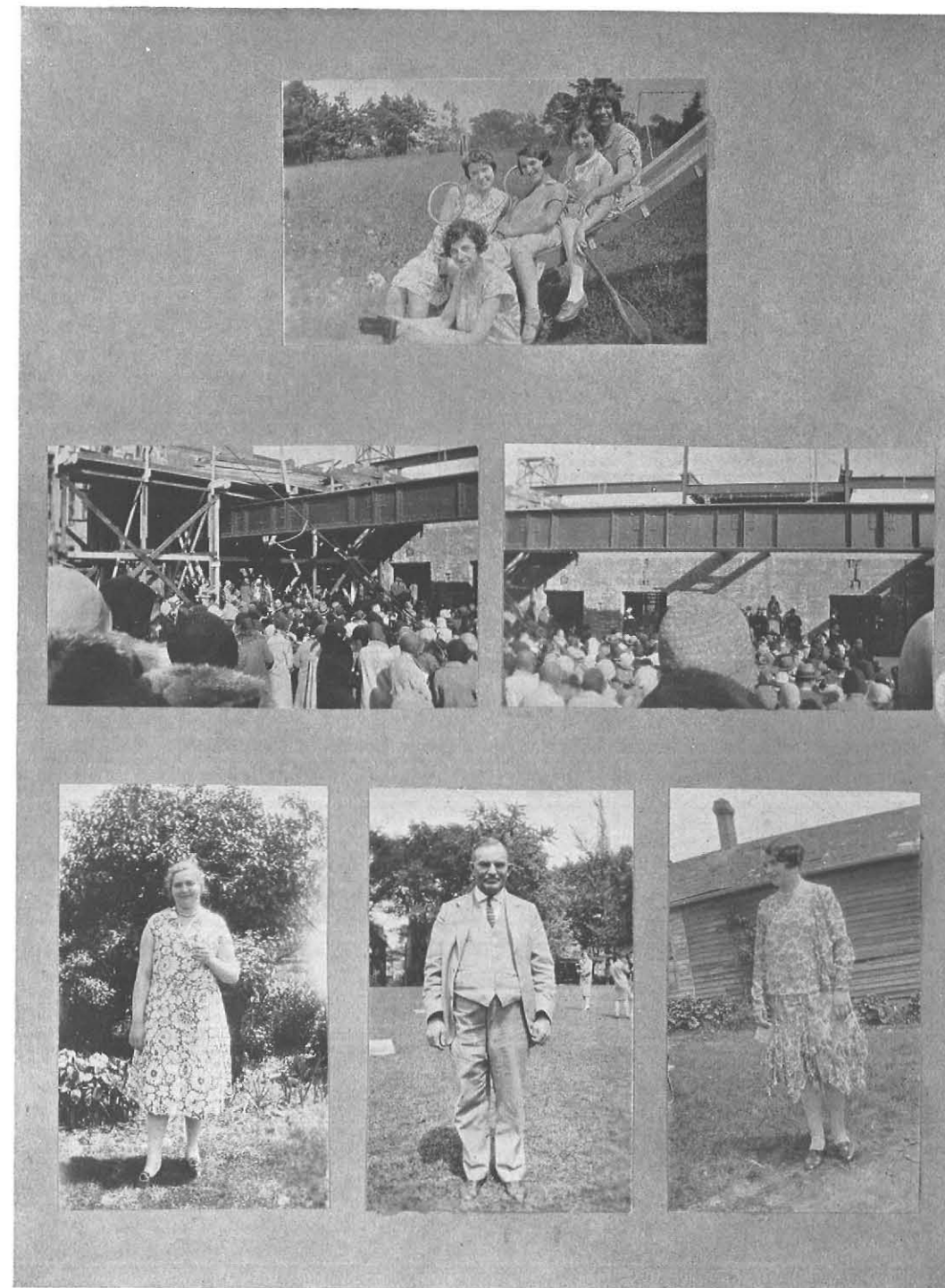
VIRGINIA NESSELBECK

### SONG AND MOTTO

HOWARD WRIGHT, *Chairman*

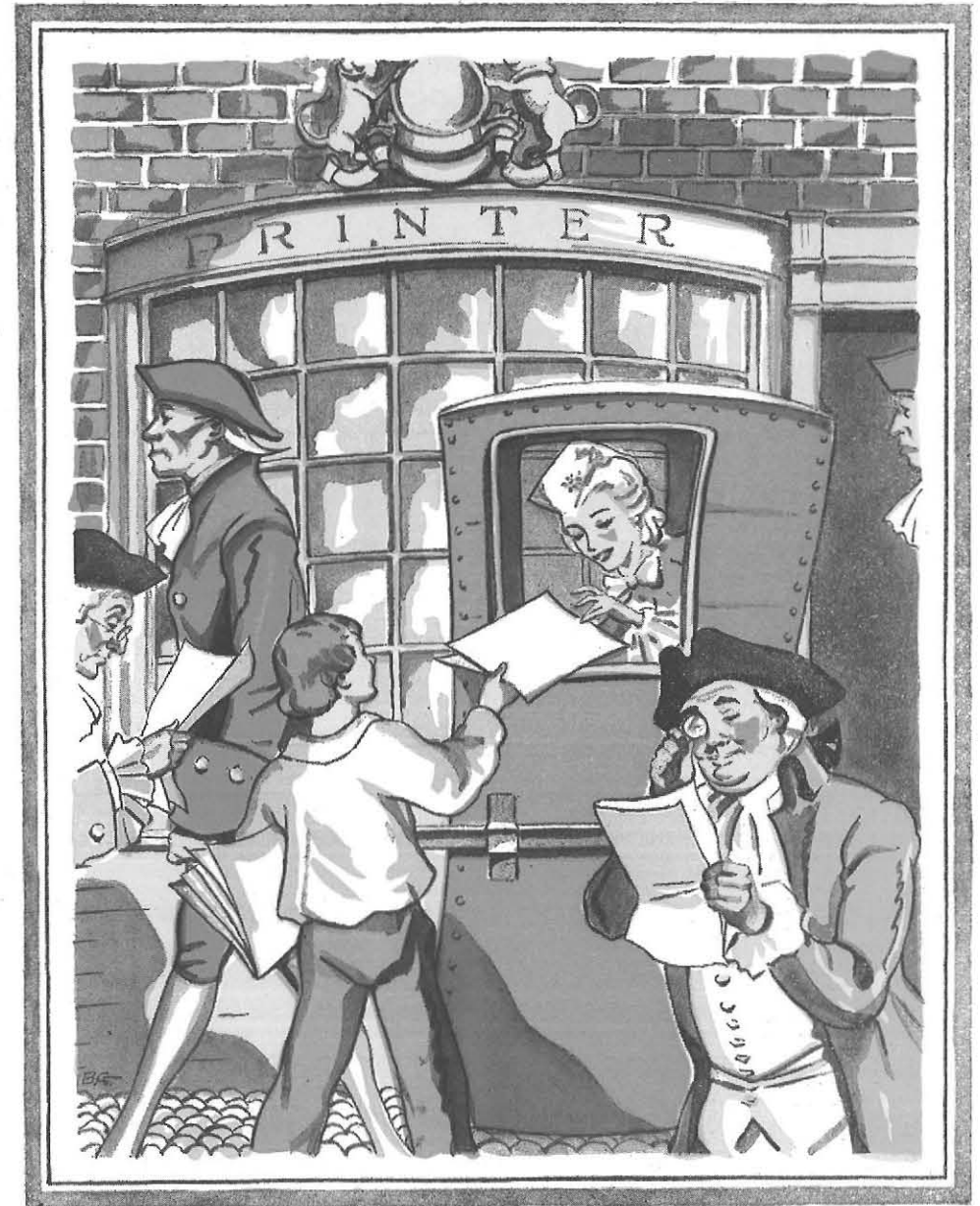
WINIFRED ALLEN  
JOSEPHINE ACKERMAN

MARGARET GUENER  
RUTH BREMS





PHOTOGRAPHS COURTESY BUFFALO EVENING NEWS



# ADVERTISEMENTS

## THE ACHIEVEMENT OF AN IDEAL



A YEARBOOK is more than a series of printed pages bound into a cover. It is the result of hours of anxious thought and patient, persistent effort. The staff of THE ELMS have accepted a real responsibility, and under the leadership of the Editor, Miss Bernardine Wende, and the Business Manager, Miss Marian Riley, they have produced a book of which they may well be proud. We feel sure that you who turn these pages and re-live the events of the year just concluded, will join us in congratulating them.

» In our humble capacity as publishers, it has been a privilege to be associated with the production of this book. Perhaps we have in a small way caught some of the enthusiasm displayed by the staff itself, for in our hands the production of a yearbook becomes a very personal matter.

» We are justly proud of the confidence placed in our ability to produce a book in keeping with the ideals of the staff and school which sponsor it. We earnestly hope that this feeling of confidence will persist, and that it will be our privilege to place the facilities of our organization at the service of the yearbook staff of State Teachers' College at Buffalo through successive years.

---

BAKER-JONES-HAUSAUER, INC.

45-51 CARROLL ST., BUFFALO, N. Y.

*Where Shopping Is As Profitable  
As It Is Pleasant . . . . .*

**C** STUDENTS and TEACHERS seem to have an especial fondness for Adam, Meldrum & Anderson Co., judging from the great number who enjoy charge accounts here . . . the many who bank in the Adam, Meldrum & Anderson State Bank . . . the many who shop here regularly.

*The Reasons:* Well, where else will you find such a combination of style, quality, dependability, fair pricing and conveniences? . . . so many shopping privileges? . . . such a friendly spirit? . . . so much helpful service?

**Adam, Meldrum & Anderson Co.**

"BUFFALO'S GREATEST STORE"

**TYPEWRITERS**

*All Makes*



A typewriter will serve all your needs through preparation and the years ahead

*Special rental rates to students*

**Buffalo Typewriter  
Exchange**

128 FRANKLIN STREET

Established 1900 Phone, Wash. 3489

*Compliments of*

**Continental Wonder  
Bakeries Co.**

313 FOUGERON STREET

*Bakers of SLO-BAKED WONDER  
BREAD, Sliced and Unsliced, and  
HOSTESS CAKES*

**R. C. ROBERTS**

*Hardware*

PAINTS - OILS - VARNISH - CUTLERY

410 CONNECTICUT STREET

Tupper 7218

**GERHARD LANG  
MEATS & PROVISIONS**

[ INC. ]

*The Home of  
Pure Foods*

Hotel, Steamship, Restaurant  
and Institution Supplies



461-463 ELLICOTT STREET  
BUFFALO, N. Y.

**THE WESTBROOK**

DELAWARE AVENUE AT NORTH STREET

BUFFALO, N. Y.



.... It has been a privilege and a pleasure to cater to the students of State Teachers' College.... Your patronage will be greatly appreciated.



*Breakfasts - Luncheons - Dinners*

Telephone, Tupper 9100



*Official Photographers for your*

1931 ELMS



H. D. TAYLOR CO.

WHOLESALE  
MERCHANTS



"Busy Since 1833"

## Smart Luggage

If you would travel smartly, visit our Luggage Section and choose from our extensive stock

All Moderately  
Priced



MAIN, MOHAWK and PEARL STREETS

## WARREN-KAHSE INC.

*Jewelers and Stationers*

FOR

FRATERNITIES · SORORITIES · CLUBS

Dance Programs and Favors

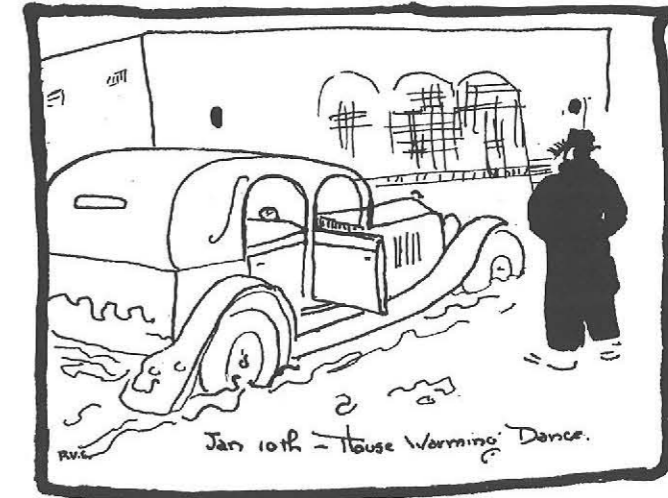
Athletic Awards

Trophies



1048 University Avenue

ROCHESTER, N. Y.



Higher marks on examinations  
by using  
SMITH'S REGENT REVIEW  
BOOKS

W. HAZLETON SMITH  
Walker Building - 37 Franklin Street  
BUFFALO, N. Y.

*Sometimes experience  
is the best teacher . . .*

*Need we  
say more?* Take foods for instance. Those who have "experienced" the fine flavor and low prices of Flickinger foods need no further teaching.

FLICKINGER'S FOOD SHOPS

*"Where the Best Foods Come From"*

Stores Throughout Western New York and Pennsylvania

CIRCUMSTANCES  
MAY MAKE IT  
ADVISABLE TO  
CONSIDER A

### BUSINESS EDUCATION

It is always advisable  
to remember

*It Pays to Attend a Good School*

BUSINESS ADMINISTRATION  
ACCOUNTANCY  
SECRETARIAL SCIENCE

← SEND FOR CATALOG →

**Bryant & Stratton College**  
MAIN ST. AT NORTH, BUFFALO, N. Y.

# Dodds Quality Milk

*The best that Science,  
Modern Equipment  
and years of experi-  
ence can produce.*

“QUALITY TELLS”

## Dodds Alderney Dairy

FILLMORE 4200

## The Artcraft Company

*School and Fraternity Printers*

Cleveland 7298



694 WASHINGTON ST. BUFFALO, N. Y.

Classes in Play Production . . . Scene Design

### Studio School of the Theatre

545 Elmwood Ave., Phone 0765

*Outline of Courses*

*Play Production . Interpretation*

*Voice Development . Phonetics*

*Stage Design*

JANE M. KEELER, Director

### ELIMINATE THE UNCERTAINTY OF MARKETING

*Phone your order to Buffalo's leading food store and  
be assured of fresh merchandise, or better still, visit  
our store where experienced sales people will serve you.*

*Our bakery specializes in fancy tea cakes, French  
pastries, petit fours, and Home-made cakes and pies.  
Also, delicious dinner rolls in any style.*

JEHLE'S                                  BRYANT STREET  
Quality Foods                          AT ASHLAND  
*If it comes from Jehle's—it's fresh*



## Deuel, Lapey & Co., Inc.

*General Insurance Service*

126 PEARL STREET    BUFFALO, N. Y.

## WM. J. ATWILL

*Linotype Composition*



501 Washington Street

Cleveland 2249

## Success . . .

*In any field can be accomplished  
only by specialized training.*

*Exceptional opportunity awaits the  
trained business man or woman of  
today as it does in no other field.*

*We specialize in training for success.*

**Chown** SCHOOL  
OF  
BUSINESS

703 MAIN ST., BUFFALO, N. Y.

## HOTEL LENOX

CLARENCE A. MINER, President



*We will submit menus and prices upon request*

*Call Tupper 1700 or write*

NORTH STREET  
near Delaware Ave.  
Buffalo, N. Y.

A private dining  
room on the top  
floor of Hotel  
Lenox will make  
your club, sorori-  
ty or class dinner  
more inviting.  
Excellent ser-  
vice and unusu-  
ally good food.

## EQUITY BUTTER

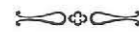
*"Rich in Vitamin D"*

DISTRIBUTED BY  
**HICKMAN, COWARD & WATTLES**

*Fro-joy Quality* is constant . . . .

*always the same ~ always good*

**F**RO-JOY Ice Cream is the most wholesome, delicious and invigorating food you can serve your guests, or your family. Place it on your daily menu.



*"Fro-joy" ICE CREAM Chock-full of "Youth Units!"*

Office Phone  
Del. 7049

Res. Phone  
Riv. 9486

### WOOLEY'S

DE LUXE MOTOR COACH TOURS  
Chartered Bus Tours Only

*Need a Bus - - Call On Us*

Ed. WOOLEY, *Supt.*

63 ALBERT AVE. BUFFALO, N. Y.



PAUL DETTLING & SON

*Jewelers*



22 West Main St.

Lancaster, N. Y.

*Implicit Confidence*

is a source of unending satisfaction in making any purchase. It is ever our aim to maintain this confidence :: ::

DENTON,  
COTTIER &  
DANIELS, Inc.

PIANOS, RADIOS

COURT AND  
PEARL STREETS

**STENOGRAPHY** . . machine shorthand . . combined with our **SENIOR SECRETARIAL COURSE** will make you a more speedy and accurate stenographer thereby increasing your earning capacity

*Summer Sessions begin July 6*

*Fall Sessions begin September 7*

Ask us about our Special Intensive Summer Course for college or normal school students

*Hurst's Private School*

Hurst Building, Franklin and Huron Streets

## Randolph McNutt Company

SCHOOL DESKS    AUDITORIUM CHAIRS  
BLACKBOARDS    SCHOOL EQUIPMENT

BUFFALO, N. Y.

EASTERN OFFICE  
28 South Pearl Street  
ALBANY, N. Y.  
R. W. TAYLOR, Representative

G. B. LAUTZ, JR.  
*Pres. and Treas.*  
BUFFALO, N. Y.

CENTRAL OFFICE  
314 Carlton Road  
SYRACUSE, N. Y.  
L. R. HOKE, Representative

# Books . . .

☞ Are you familiar with the fiction and biographies that are discussed among your friends—and about which you feel you should know something?

☞ You can keep up with current literature, fiction, biography, belles lettres and poetry by reading the book reviews and intelligent discussions of books—

*Every Saturday in the*  
**BUFFALO EVENING NEWS**

## T. & E. DICKINSON & CO. INCORPORATED

*Buffalo's Leading Jewelers*

"Gifts for the Graduate"

618-620 Main Street

L. G. BALFOUR COMPANY  
 ATTLEBORO, MASSACHUSETTS

*Manufacturing Jewelers*



"Nine of every ten badges on any campus are Balfour-made"

BAUER BROS.

*Memorial Craftsmen in Granite  
 Marble and Bronze*



LANCASTER, N. Y.

### Complete FIRST AID EQUIPMENT

*for  
 Home, Factory, Store and Travel*



JEFFREY-FELL COMPANY  
 1700 Main Street TWO STORES 318 Pearl St.  
 BUFFALO, N. Y.

### *Floral Service . . . .*



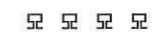
RUTH BARRY FLOWER SHOP  
 1088 ELMWOOD AVE.

BIDWELL PARKWAY BEAUTY SHOPPE  
 946 Elmwood at Bidwell Pky.

**S**PECIALIZING in all Branches of  
 Beauty Culture . . . Featuring  
 the Famous Edmund Steam Per-  
 manent Wave . . . . Special Rates.

*Open Friday and Saturday Evenings Bid. 3536*

### » » LUNCH « «



PARK CONFECTIONERY  
 SCALTS BROS., Proprietors  
 1124 Elmwood at Forest



CAP AND GOWNS FOR RENT AND SALE

## PETER PAUL & SON

INCORPORATED

ANTHONY M. PAUL, President and General Manager

### STATIONERS and ENGRAVERS

*Sorority Dance Programs and Stationery, Wedding  
Invitations and Announcements, Cards and Gifts for  
All Occasions. Class Pins, Rings, Invitation Cards*

256 DELAWARE AVENUE - ABOVE CHIPPEWA STREET

### JOE'S FRUIT MARKET

*Wholesale and Retail  
Fancy Fruits and Vegetables*  
142 E. FERRY STREET  
Phone FR. 6088

We Carry a Full Line of Fancy Can Goods

*Eat at Our Fountain We Carry School Supplies*

### AL-RO DRUG STORE

1116-18 ELMWOOD AVE.  
Near Forest

*Try Our Special Sandwiches . . .  
Prices Moderate . . . Visit Our  
Students Rest Room . . . Toilet  
Goods, Candies and Tobaccos.*

### NATIONAL TEACHERS AGENCY

RUBY E. ROBINSON, MGR.  
405 Herald Building - Syracuse, N. Y.

PERSONAL SERVICE  
To Teachers and Schools

*We Need You You Need Us Enroll Now*

### Neighbor . . . .

STOP for Socony  
Service at Grant and  
Auburn . . . Operated by  
your neighbor . . .

FAHY & MILLER

## SCOTT'S ROLLER RINK

MAIN and  
BURTON  
STREETS

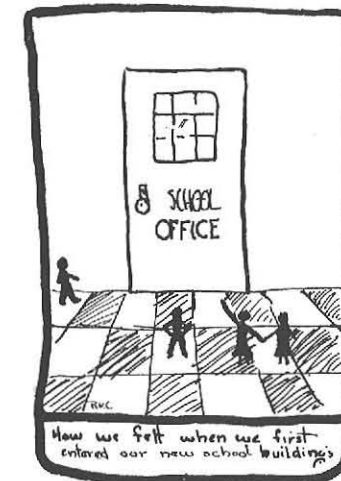


is opening for the

### Winter Season

SUNDAY, AUG. 30, 1931

Call Riv. 0774



## Cox, Sons & Vining

131-133 East 23rd Street  
New York

Makers of  
CAPS, GOWNS and HOODS  
*for all Degrees*

Correct Outfits for Sale or Rental

# Shea Theatres

GREATER BUFFALO'S  
GREATEST ENTERTAINMENT

NOW—More than ever before!

☞ The world of entertainment changes constantly. Personalities bloom and pale with the shifting tide of popular approval!

☞ Vogues in stage and screen programs vary with the times. *Shea Theatres*, while keeping pace with public taste and in tune with changing times, stay fixed as the North Star in their guarantee of quality!

☞ Today, the new developments in entertainment—on stage, screen, and in the music department—emphasize our Quality Pledge!

*More than ever before Shea Theatres are your unfailing guide to the best in Entertainment!*

SHEA'S BUFFALO

SHEA'S HIPPODROME

SHEA'S CENTURY

*and—in the communities*

SHEA'S ELMWOOD  
Elmwood at W. Utica

SHEA'S ROOSEVELT  
837 Broadway

SHEA'S BAILEY  
Bailey Ave. at Genesee St.

SHEA'S SENECA  
Seneca St. at Cazenovia

SHEA'S NORTH PARK  
Hertel Ave. at North Park

SHEA'S KENSINGTON  
Bailey Ave. at Kensington

Member Florists Telegraph Delivery

# K R A M E R Florist

1291 JEFFERSON AVENUE  
56 W. CHIPPEWA STREET  
BUFFALO, N. Y.

*Jefferson 1246*



Buffalo's Most Modern Flower Shop

# THE ELMWOOD Flower Shop

A. A. ERCKERT & SON

Phone, Bidwell 0948

976 ELMWOOD AVENUE  
GREENHOUSES - - WILLIAMSVILLE

Member Florists Telegraph Delivery

A CAR OF BRILLIANT BEAUTY  
POWERED WITH AIRPLANE-TYPE ENGINE

# FRANKLIN

*America's Most Modern Motor Car*

## OSTENDORF MOTOR CAR CORPORATION

1221-1225 Main Street, Buffalo, N. Y.

*Splendid Values in USED FRANKLINS*

Right in your own home,  
you can enjoy the delicious sea foods  
you have eaten at Gandy's Restaurant,  
for Gandy's Sea Food Market will de-  
liver the same "pick of the catch" to  
your door.

Phone your order to Washington 6432

# Gandy's

FOODS FROM THE SEA

## Sea Food Market

388 PEARL STREET  
at Chippewa

# HOTEL MARKEEN

Excellent Facilities  
for Entertaining

Menus Submitted

PHONE, TUPPER 9890

MAIN AT UTICA STREET

The Staff gratefully ac-  
knowledges the co-operation  
of student body and faculty

