

State University of New York College at Buffalo - Buffalo State University

Digital Commons at Buffalo State

Elms, Student Yearbooks

Buffalo State Archives: History of the Institution

1-5-1925

The Elms 1925

Buffalo State College

Follow this and additional works at: <https://digitalcommons.buffalostate.edu/theelms>



Part of the [History Commons](#)

Recommended Citation

Buffalo State College, "The Elms 1925" (1925). *Elms, Student Yearbooks*. 14.
<https://digitalcommons.buffalostate.edu/theelms/14>

This Book is brought to you for free and open access by the Buffalo State Archives: History of the Institution at Digital Commons at Buffalo State. It has been accepted for inclusion in Elms, Student Yearbooks by an authorized administrator of Digital Commons at Buffalo State. For more information, please contact digitalcommons@buffalostate.edu.

Ref
LD
3840
B8
E4
1925

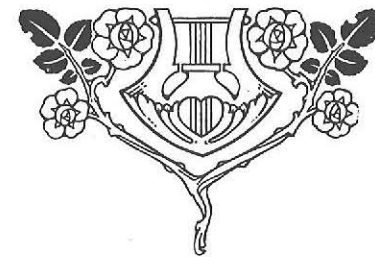
THE ELIOS
1925

1925

Volume Fourteen

1925

The Elms



Published by the Senior Class of the
State Normal School
Buffalo, N. Y.

EDWARD H. BUTLER, A. B.

The class of 1925 affectionately dedicates this volume of the Elms to EDWARD H. BUTLER, who has so splendidly furthered the same spirit of a so loved and honored father, by exhibiting the same true fostership and virile force in all the interests of the Buffalo State Normal School.



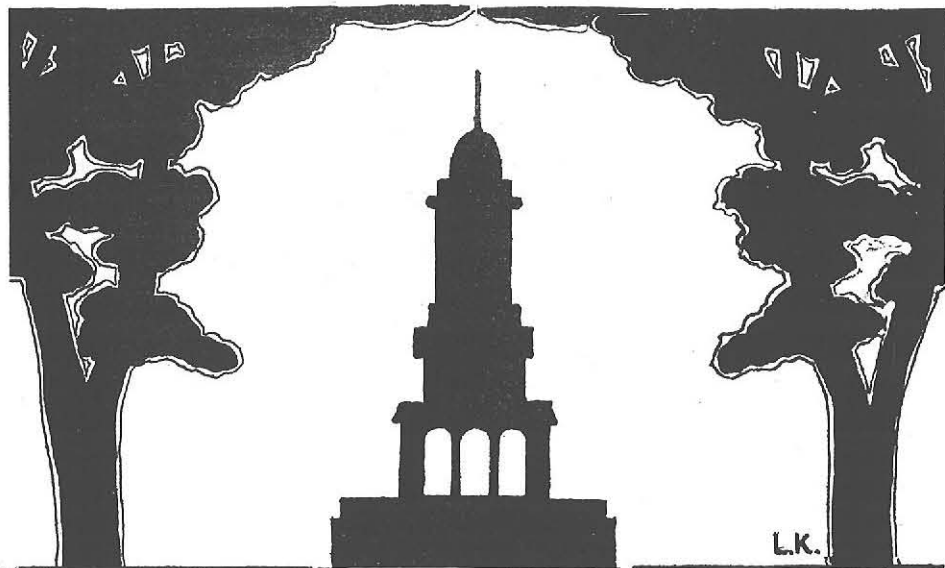
TO OUR PRINCIPAL
HARRY WESTCOTT ROCKWELL

B. A., M. A., Pd. D.

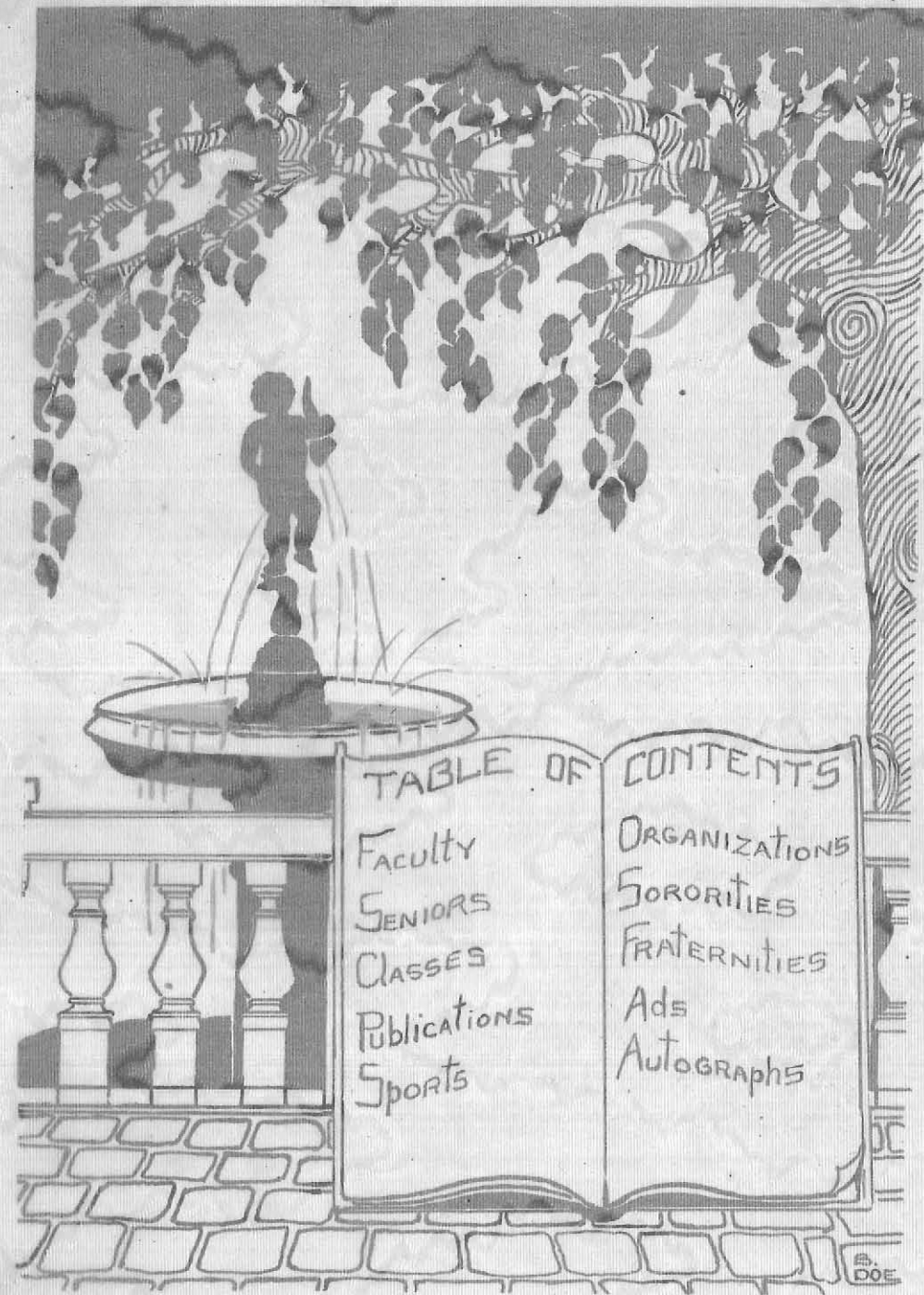
The class of 1925, the first of the three year course, lovingly expresses its true appreciation and sincere esteem for his untiring zeal and splendid co-operation.

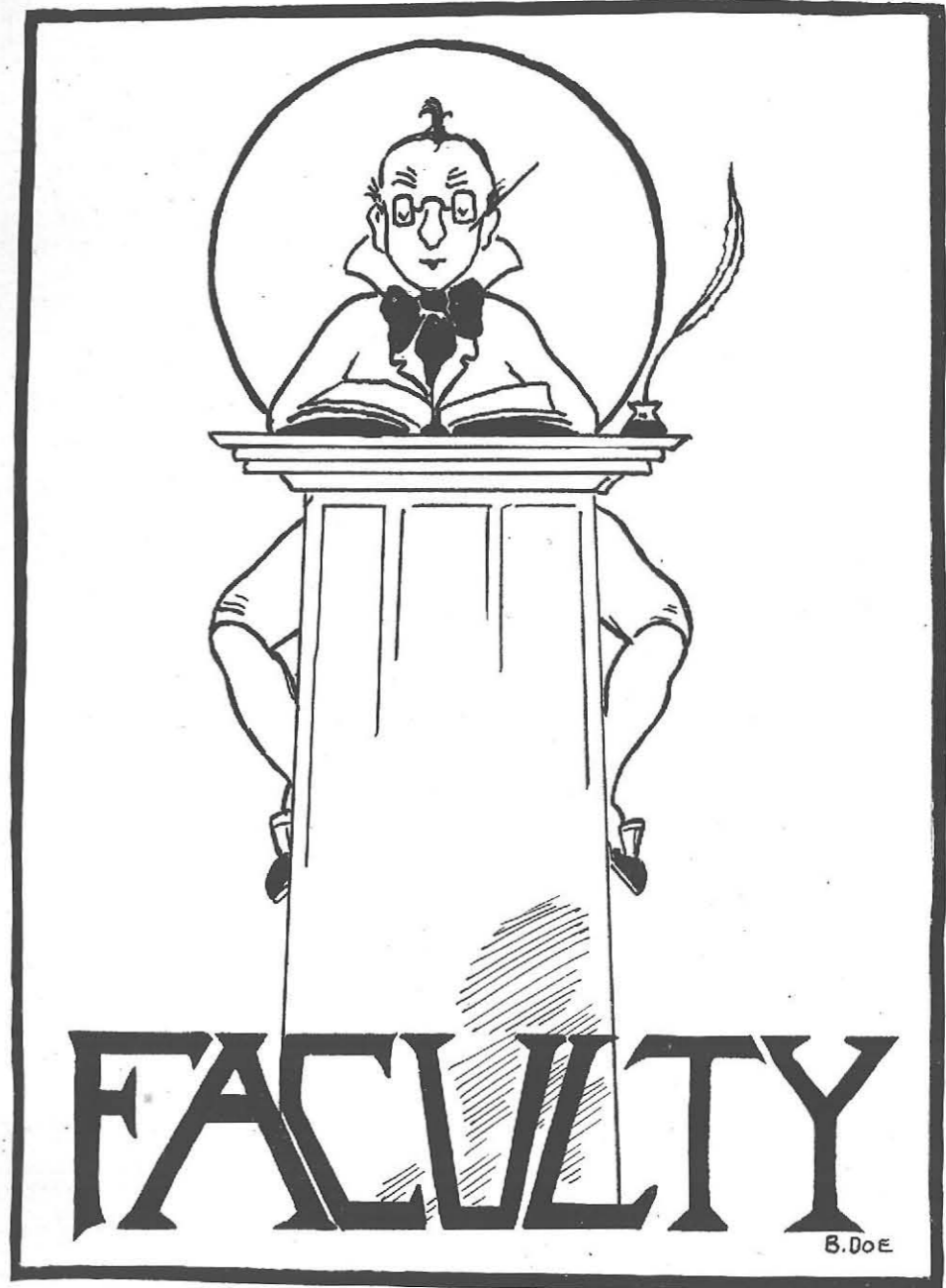


*With best wishes
Harry W. Rockwell*



They stand before our very eyes,
 An inspiration for a life,
 To give us strength and lofty thoughts-
 To keep us straight in toil and strife.
 Like pictures carved in bas-relief-
 Enduring through the centuries past-
 The sight of elms lined 'gainst the sky-
 Is graven on our memories fast.
 No need to tell our love for Her-
 No use to try to recompense-
 It will be shown in work we do-
 And not in idle words or cents.
 So- when we leave this shady spot-
 These noble elms, these friends and walls-
 Remembrance still will cling- we'll find
 To cherished scenes within its walls.
 Ethel Hawkins.



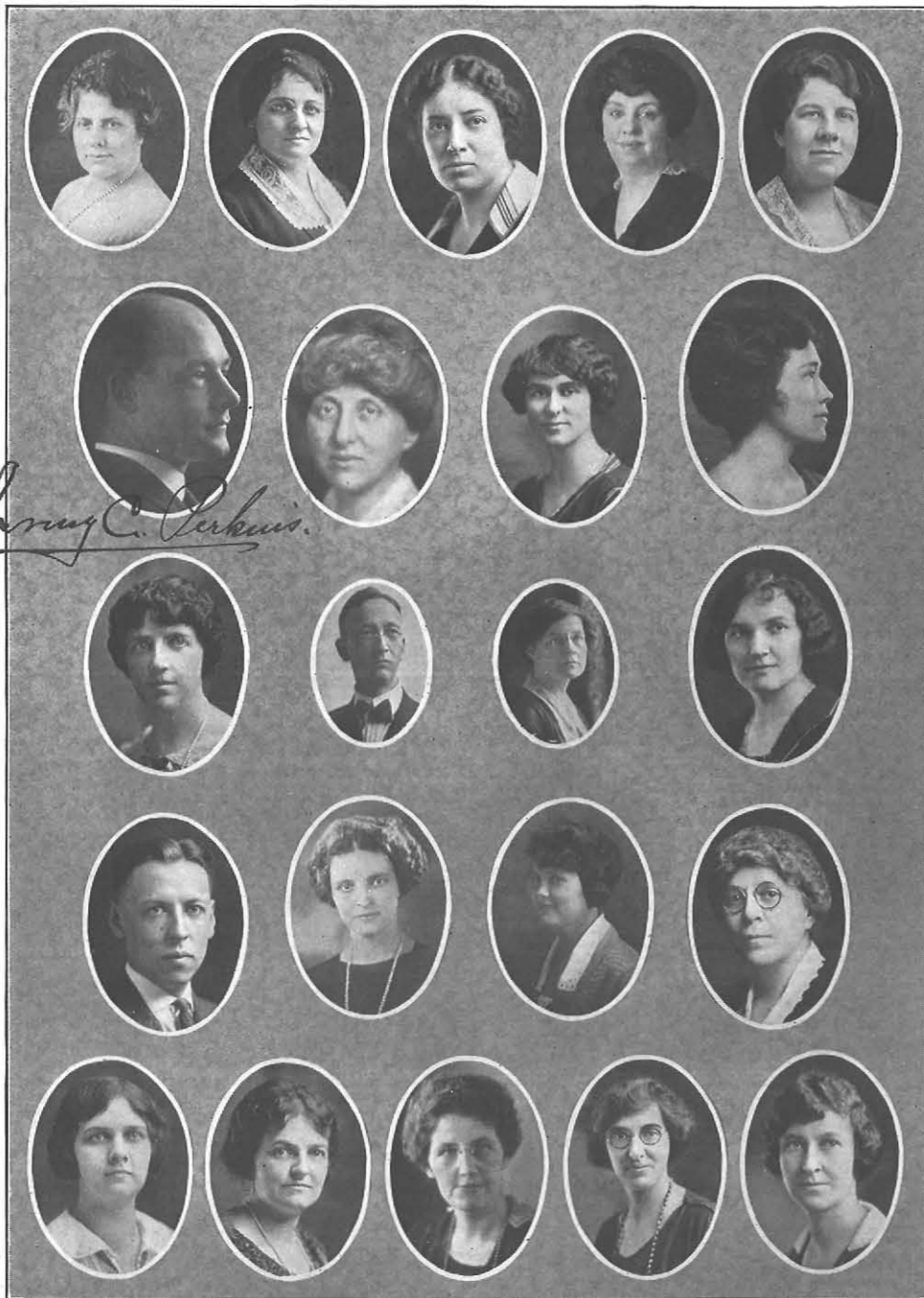


B. Doe



The Faculty

PHILIP G. AUCHAMPAUGH, B.A., M.A., Ph.D.	History
GERTRUDE M. BACON, B.S., M.A.	Superintendent of Practice Teaching
FLORENCE G. BOORMAN	Kindergarten
✓ CHARLES B. BRADLEY	Head of Art Department
ALICE A. BRIGHAM, B.S.	Domestic Art
CLINTON B. BURKE	Woodworking
LOUISE M. CASSETY	Head of Kindergarten-Primary Department
MYRTLE V. CAUDELL, B.S., M.A.	Director of Vocational Homemaking Department
LUELLA CHAPMAN	Penmanship
SUSAN FRANCES CHASE, B.L., M.A., Pd.D.	Psychology and Mental Testing
STEPHEN C. CLEMENT, B.A.	Head of Department of Social Science
FRANCES R. CROOKER, B.A., M.S.	Science
RUBIE B. DONALDSON, B.S.	Foods
HELEN G. ENGLEBRECK, B.A., M.A. (Leave of Absence)	History and Registrar
ANNA M. GEMMILL, B.S., M.A.	Chemistry
MARGUERITE HANSON, B.S.	Design
HAZEL HARRIS, B.S., M.A.	English
RUTH ELLIOTT HOUSTON, B.A.	Head of Health Department
GEORGE E. HUCKINS	Printing
EDNA W. HURD	Music
✓ JANE M. KEELER	English and Dramatics
IDA L. KEMPKE, Pd.B., B.A., M.A.	Head of English Department
† M. LOUISE McMAHON	Music
EILEEN MULHOLLAND, Ph.B.	English

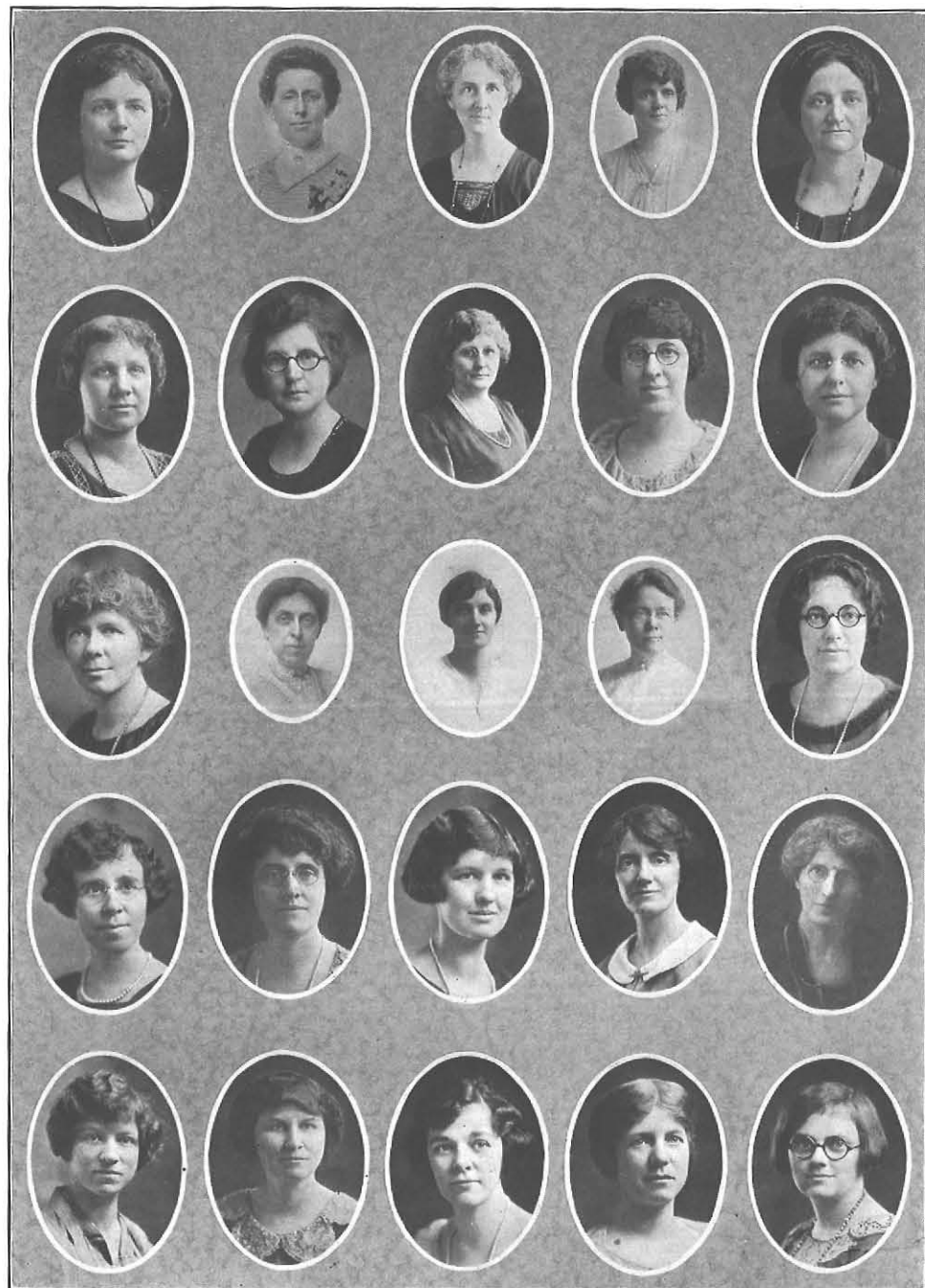


The Faculty (Continued)

IRVING C. PERKINS, B.S.	Director of Vocational Industrial Department
JOSEPH F. PHILLIPPI, B.A., M.A.	Head of Mathematics Department
GEORGE M. QUACKENBUSH, B.S.	Vocational Industrial
CATHERINE E. REED, A.B.	Elementary Science and Nature Study
LAURA L. REMER, Ph.B., M.A.	Kindergarten-Primary Department
AMY REXTREW, B.S.	Homemaking Teacher Training
JENNIE ROBSON, Pd.B.	Arithmetic
CHARLES C. ROOT, B.Pd., M.Pd., B.A., M.A.	Head of Education Department
WINIFRED E. SALOM	Health Education
VESTA N. SCOPY, B.S.	Foods
MILDRED L. SIPP, B.S., M.A.	Homemaking Teacher Training
HELEN C. SMITH, B.S.	Foods and Practice House
RUTH E. SPEIR	Music
AMELIA B. SPRAGUE	Drawing and Design
ELIZABETH P. TAYLOR	Vocational Dressmaking
MURIEL W. TURNER	Health Education
GRACE VIELE, B.L.	Librarian
ROBERT VOSS	Machine Shop, Industrial Education
LILLIAN W. WALKER, B.S.	Geography
WALTER B. WEBER	Electric Theory and Shop Practice
JEAN WHERRY (Substitute)	History

Office Staff

NELLIE P. HOWLAND	Secretary to Principal
JUNE E. FISCHER	Stenographer
MIGNONNE CAPELLI	Stenographer
MABEL B. GILBERT	Cafeteria Manager
FRANKLIN H. SMITH	Superintendent of Grounds and Buildings



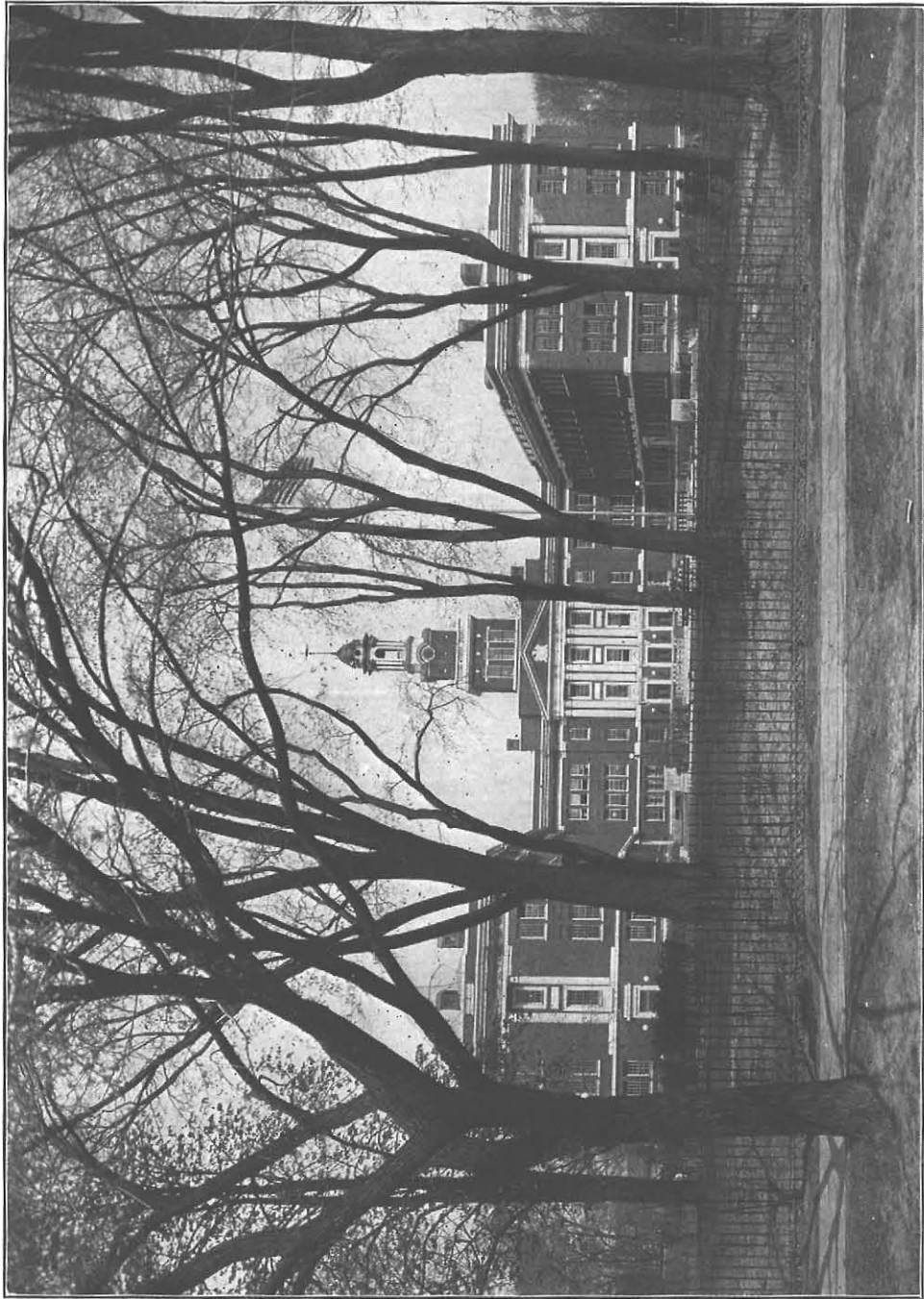
Faculty of the Practice Schools

Public School No. 38

M. JOSEPHINE DURNEY	<i>Critic Teacher, Eighth Grade</i>
EDNA R. GARDNER	<i>Critic Teacher, Seventh Grade</i>
FANNIE A. GARWIN	<i>Critic Teacher, Sixth Grade</i>
LINA GIELOW	<i>Critic Teacher, Fifth and Sixth Grades</i>
CHARLOTTE MOORE	<i>Critic Teacher, Sixth Grade</i>
H. GENEVIEVE DYE	<i>Critic Teacher, Fifth Grade</i>
GRACE G. BALLARD	<i>Critic Teacher, Fourth Grade</i>
LENA S. DENECKE	<i>Critic Teacher, Fourth Grade</i>
AGNES AGNITCH	<i>Critic Teacher, Third Grade</i>
MARIAN R. WAKEMAN	<i>Critic Teacher, Third Grade</i>
THERESA I. JAMES	<i>Critic Teacher, Second Grade</i>
MINNIE B. LAIRD	<i>Critic Teacher, Second Grade</i>
ALICE MCKAY	<i>Critic Teacher, First Grade</i>
MARTHA G. METZ	<i>Critic Teacher, First Grade</i>
FRANCIS M. RUDELL	<i>Critic Teacher, First Grade</i>
CLARA A. KREINHEDER	<i>Kindergarten</i>

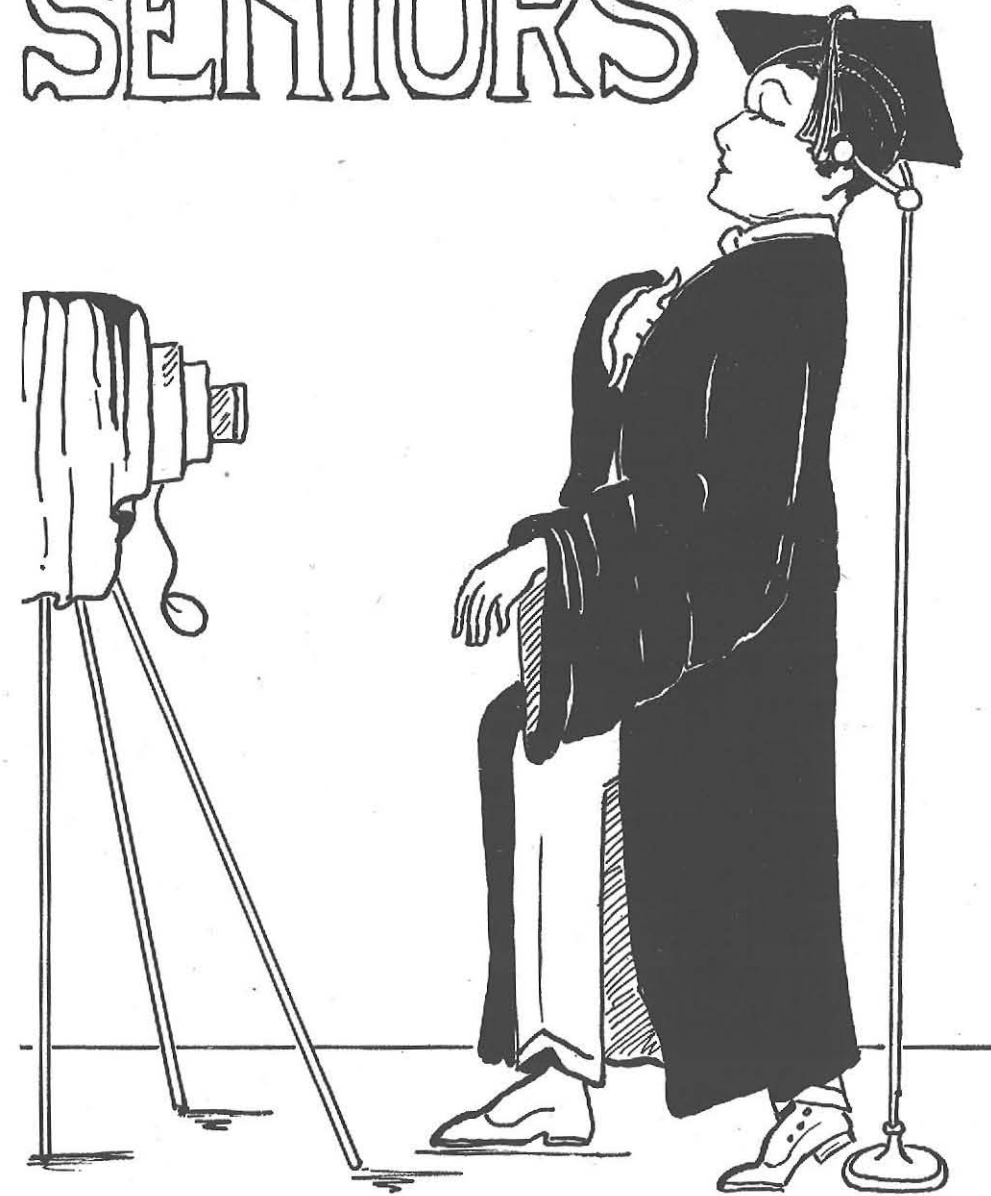
Critic Teachers School of Practice

MINNIE GROVES	<i>Ninth Grade</i>
MARY H. FOWLER	<i>Eighth Grade</i>
ELIZABETH B. SMALL	<i>Seventh Grade</i>
MARGARET DELANY	<i>Sixth Grade</i>
STELLA O'REILLY	<i>Fifth Grade</i>
CARRIE BENSON, B.S.	<i>Fourth Grade—Assistant Principal</i>
ELLA M. SMITH	<i>Third Grade</i>
THERESA A. ROEHLER	<i>Second Grade</i>
ERNINA S. SMITH	<i>First Grade</i>
† HELEN WEIS (Leave of Absence)	<i>Sixth Grade</i>



ALMA MATER

SENIORS



B DOE

Senior Class Officers

ROSETTA HEBENSTREIT *President*
 WALTER SMITH *Vice President*
 JANE DINSMORE *Secretary*
 ALLEN VOGT *Treasurer*

CLASS MOTTO: Not for self, but for service.

COLORS: *Green and White*

FLOWER: *White Rose*

Senior Committees

PICTURE

Marian Fisher, *Chairman*
 Harry Abate
 Madeline Blaisdell
 Jane Hanrahan
 Grace Cowan

GIFT

George Watson, *Chairman*
 Elizabeth Faul
 Louise Allen
 Clifford Geyer
 Anne Kirtland
 Minnie Brink

CAP AND GOWN

Thelma Shoemaker, *Chairman*
 Jean Carmichael
 Ethel Hawkins
 Charles Gibson
 Ruth Woodward

FINANCE

Allen Vogt, *Chairman*
 Eloise Weimar
 Alma Measer
 Alton Heller
 Jeanette Goodman
 Louise Fraser

INVITATION

Arthur Ahr, *Chairman*
 Frances Zacher
 Gertrude Schmidt
 Lolita Kraus
 Leonore Miller
 Patricia Bodwell

CLASS DAY

Fredericka Fox, *Chairman*
 Dorothy Brumley
 Esther Strootman
 Fred Finsterbach
 Ruth Knell
 Ruth Wilfert

RING AND PIN

Walter Smith, *Chairman*
 Betty Coughlin
 Rose Joyce
 John Shea
 Jane Hanrahan
 Mildred Hickes
 George Hanneman
 Edna Allen
 William Lanigan
 Edith Kiger

COLOR

Mary Graham, *Chairman*
 Charlotte Dziminska
 Eleanor Cheney
 Ethel Warnke
 Marion Post
 Dorothy Balme

MOTTO

George Holliday, *Chairman*
 Ida Hartzell
 Edith Kiger
 Margaret Foote
 Peter Van Haarem

FLOWER

Mildred Bittner, *Chairman*
 Ruth Macnaughton
 Alice Petillion
 Rowena Raymond
 Pauline Morgan

SONG

Viola McDermant, *Chairman*
 Clayton Hoyle
 Kyrl Dee
 Roger Johnson
 Charlotte Risley
 Rowena Raymond
 Eloise Weimar

WAYS AND MEANS

Jeanette Goodman, *Chairman*
 Edith Kiger
 Madeline Blaisdell

Anna Downey
 Arthur Ahr
 Harold North

CLASS SONG

Now we gather, Buffalo Normal Class of '25,
 Years together, through work, through play, through care and strife,
 Serving ever, for our Alma Mater is the light
 Onward, guiding us aright.

Chorus

Normal School, we love so well,
 We pledge you our allegiance true, through good or ill,
 Ever forward may we strive,
 Carrying your banners high—this class of '25.

Now we leave you, Buffalo Normal School, to us so dear;
 Teachers, classmates, we've loved you all through toil while here,
 Hoping ever you will keep the glorious standard high,
 So in parting we will sing.

ABATE, HARRY F.....Niagara Falls, N. Y.

Grammar
 Basketball Team, '22-'23, '23-'24
 Tri Kappa Fraternity
 Record Staff
 Basketball Captain '24-'25
 Picture Committee
 Editor-in-Chief of Elms
 When nature has work to be done, she creates a
 genius to do it.

ADAMS, SHIRLEY.....Buffalo, N. Y.

Kindergarten-Primary
 Y. W. C. A.
 Glee Club
 Basketball
 Art Kraft Klub
 A clever girl who turns great troubles into little
 ones,
 And little ones into none at all.

AHR, ARTHUR, F.....Hamburg, N. Y.

Two Year Industrial
 Psi Phi Fraternity Chaplin
 Elms Staff
 Record Staff
 Faculty Student Council
 Invitation Committee Chairman
 Section Captain '24-'25
 Men's Club
 Ways and Means Committee
 Courage mounteth with occasion.

AIKEN, HELEN.....Le Roy, N. Y.

Intermediate
 Many a genius has been slow of growth. Oaks
 that flourish for a thousand years do not spring into
 beauty like a reed.

ALEXANDER, FRANK W.....Rochester, N. Y.

Industrial Vocational
 Cheer leader
 I am no orator, I only speak right on.

ALLEN, DOROTHY H.....N. Tonawanda, N. Y.

Home Economics
 H. A. Club
 Y. W. C. A.
 Sweet is thy friendship singing true
 It leaves a little star to light
 The way, in all that we may do.

ALLEN, ELNA L.....Niagara Falls, N. Y.

Home Economics
 Chairman Student Clubs, N. Y. State Home Eco-
 nomics Association
 Phi Upsilon Omicron Vice Pres. '24-'25
 Clonian Sorority Secretary '24
 Bulletin Board Committee '23
 H. A. Club
 Pres. H. A. Class '24
 "Studies, wit and fun,
 Niceness, wiseness
 Serious blitheness—all rolled into one."

ALLEN, LOUISE H.....Buffalo, N. Y.

Home Economics
 Clonian Sorority Pres. '24-'25
 H. A. Club
 Section Captain '21-'22
 With energy, wit and ability,
 She accomplishes all with facility
 Loved by a myriad host of friends
 Each to her charm of personality bends.



Harry Abate

Frank W. Alexander



ANDLER, ESTHER.....Springville, N. Y.
Grammar

Of all the girls that we have met
You are the thinnest of them yet.

BALDWIN, VIDA.....Williamsville, N. Y.
Kindergarten-Primary

To do nothing by halves is the way of noble spirits.

BANDUHN, LILLIAN.....Buffalo, N. Y.
Intermediate

Art Kraft Klub Treasurer '24
Happiness is a wayside flower that grows along
the highway of thoughtfulness.

BALME, DOROTHY SEYMORE....Buffalo, N. Y.
Home Economics

Tri Sigma Sorority Pres. '24
H. A. Club
Section Captain '22
Vice President H. A. Class '23-'24
"As the basis of a sweetest character
A sincere, lovable soul
With refinement truly imbred
A kind heart completes the whole."

BECKER, MARJORIE.....Buffalo, N. Y.
Kindergarten-Primary

And hand in hand on the edge of the sand, they
danced by the light of the moon.

BEGGS, GRACE E.....Ransomville, N. Y.
Intermediate

Y. W. C. A. '23
Always ready and willing to to the thing required
of her.

BENTLEY, RUBY.....Westfield, N. Y.
Grammar

A maiden never bold who enjoys such society as is
quiet, wise and good.

BEST, HELEN E.Buffalo, N. Y.
Home Economics

H. A. Club
Glee Club
"A smile, a laugh, a word of friendly greeting
'Tis a live mind and worker you're meeting."

BITTNER, MILDRED.....Angola, N. Y.
Intermediate

Section Captain '25
Flower Committee Chairman
For it stirs the blood in an old man's heart
And makes his pulses fly
To catch the thrill of a happy voice
And the light of a pleasant eye.

BLAISDELL, MADELINE.....Buffalo, N. Y.
Intermediate

Clionion Sorority Corresponding Secretary '25
Record Staff
Glee Club
Art Kraft Klub
Freshman Hand Book
Y. W. C. A. Treasurer '23
Basketball
Picture Committee
Christmas Play
Ways and Means Committee
Some are horn great, some achive greatness and
some have greatness thrust upon them.

BLANEY, NORMA.....Buffalo, N. Y.
Kindergarten-Primary

Art Kraft Klub
What is the little one thinking about, very wonder-
ful things without a doubt.

BOA, RAYMOND M.Buffalo, N. Y.
Two Year General Industry

Psi Phi Fraternity
Record Staff
Men's Club
I only know we loved in vain
I only feel—Farewell!—Farewell.

BODWELL, PATRICIA DOROTHY
Williamsville, N. Y.
Kindergarten-Primary

Glee Club
Dramatic Club
Tau Phi Sorority
Record Staff
Invitation Committee
Oh this learning, what a thing it is.

BRASSAW, LLOYD L.....Tonawanda, N. Y.
Two Year General Industrial

He draweth out the thread of his verbosity finer
than the staple of his argument.

BRENNAN, VERONICABuffalo, N. Y.
Kindergarten-Primary

"Why work longer? It is time to play."

BRESNAHAN, MARY.....Buffalo, N. Y.
Intermediate

Orchestra
"Gentle to others, but to herself severe."



Ray M. Boaz
40



BRINK, MINNIE H.....Holland, N. Y.

Intermediate
 Art Kraft Klub President '25
 Basketball
 Glee Club Treasurer '24
 Gift Committee
 Clonian Sorority Secretary '24
 I am never weary when I hear sweet music.

BROMLEY, CHARLOTTE....Lackawanna, N. Y.

Grammar
 Art Kraft Klub
 Nu Lambda Sigma
 "Silence—a woman's best adornment."

BROWN, LUELLA M.....Gowanda, N. Y.
 Kindergarten-Primary

I am resolved to grow fat and look young till forty,
 and then slip out of the world with the first wrinkle
 and the reputation of five and twenty.

BRUMLEY, DOROTHY.....Lockport, N. Y.
 Kindergarten-Primary

Tau Phi Sorority
 Section Captain '24
 Black hair and sparkling eyes,
 Smiling face and wondrous wise.

BURNS, EVELYN.....Knowlesville, N. Y.
 Intermediate

Quiet, sweet, lovable, in fact delightful in every
 way.

CARBECK, MYRTLE M.....Farnham, N. Y.
 Grammar

Art Kraft Klub
 Much I know, but to know all is my ambition.

CAREY, MARGRETTABuffalo, N. Y.
 Kindergarten-Primary

I never trouble trouble till trouble troubles me.

CARMICHAEL, JEAN I.....Buffalo, N. Y.
 Intermediate

Clonian Sorority Treasurer '24
 Cap and Gown Committee
 Section Captain
 She has the ability to do everything well she
 undertakes.

CASSIDY, ALICE M.....Buffalo, N. Y.

Kindergarten-Primary
 Small of stature but large in mind.

CHENEY, ELEANOR G.....Lancaster, N. Y.
 Kindergarten-Primary

Elms Staff
 Color Committee
 Glee Club
 God gives speech to all,
 Song to few.

CIRRITA, JEAN.....Buffalo, N. Y.
 Intermediate

A girl serene and true
 Who is always ready to do.

CLARK, ETHEL.....Kenmore, N. Y.
 Home Economics

Tri Sigma Sorority V. Pres. '25
 H. A. Club
 Oh she's quick, yet not flighty
 And she has a catching line
 Always laughing—it's her hobby
 Worth your while—and worth her time.

CLARK, LESLIE W.....Medina, N. Y.
 Industrial Vocational

Athletics
 Too low they build, who build beneath the stars.

COLLARD, MONITA.....North Collins, N. Y.
 Kindergarten-Primary

Glee Club
 Her custom is to do and say
 The kindest thing in the kindest way.

COLLINS, EVELYN G.....Hornell, N. Y.
 Kindergarten-Primary

Glee Club
 Orchestra
 Songs of sweetness she doth bring.

CONGDON, ALBERTA N.Angola, N. Y.
 Intermediate

Art Kraft Klub
 Always in the right place at the right time.





*Sorochy III.
Died Jan. 29-1937*

*Violet M.
Cullen.*

- CONVERY, HELEN J. Bath, N. Y.
Home Economics
Phi Upsilon Omicron
H. A. Club
Bulletin Board Committee
In voicing opinions, bombastic
A clever wit—sarcastic,
A fine mind, a noble soul—
Sure is she to reach her goal.
- CORCORAN, VIOLA..... Buffalo, N. Y.
Intermediate
I have a soul that like an ample shield
Can take in all, give ample room for more.
- COUGHLIN, ELIZABETH MARY Lancaster, N. Y.
Grammar
Basketball
Ring and Pin Committee
Two Irish eyes, an Irish smile
And acting Irish all the while.
- COWAN, ALFRED..... New York City
Industrial Vocational
Basketball
Dramatic Club
Great in the works of art, but greatest in the
hearts of his fellow students.
- COWEN, GRACE M.,..... Buffalo, N. Y.
Home Economics
H. A. Club
Picture Committee
Song brings of itself a cheerfulness
That wakes the heart of joy.
- CROLL, DOROTHY M..... Buffalo, N. Y.
Grammar
Faculty Student Council
Literary
Literary Editor Record
Section Captain '22
Dramatic Club
Class Day Committee
Demure and fair
She skipped into our hearts unaware.
- CRUICKSHANK, WINIFRED Buffalo, N. Y.
Intermediate
Tau Phi Sorority
Corresponding Secretary '24
Basketball
Glee Club
Like the end of a perfect day
She satisfies you in every way.
- CULLEN, VIOLET M..... Porterville, N. Y.
Intermediate
From the crown of her head to the sole of her
foot, she is all mirth.

- DAIGLER, MARION M..... Williamsville, N. Y.
Kindergarten-Primary
On with the dance, let joy be unconfined
No sleep till morn
When youth and pleasure meet.
- DALEY, MARIAN..... Buffalo, N. Y.
Home Economics
H. A. Club
Alas, a Lass, a jolly Lass
The kind of girl we like in class
Outside? Oh yes—You 'ere can tell
Her witty jibe all gloom'll dispell.
- DEE, KYRL E. Fort Edward, N. Y.
Industrial Vocational
Men's Club President
Psi Phi Fraternity
Glee Club
Song Committee
I only regret that I have but one heart to give
to the ladies.
- DELEHANTY, JULIA Bergen, N. Y.
Intermediate
For her heart was in her work and the heart Giveth
grace unto every Art.
- DENECKE, MARIE..... Buffalo, N. Y.
Kindergarten-Primary
Glee Club
Dramatic Club
She never gets into a flurry
For it never pays to worry.
- DEPEW, MARJORIE..... Buffalo, N. Y.
Kindergarten-Primary
Art Kraft Klub
Obliging, steadfast, loyal and true.
- DICKMAN, LYDIA..... North Collins, N. Y.
Grammar
Art Kraft Klub
Basketball '24
A demure little miss.
- DIDLEY, DOROTHY..... Buffalo, N. Y.
Intermediate
Basketball
Glee Club '23
"The very room that she was in,
Seemed warm from floor to ceiling."



F. Kyrl Dee

*Dorothy
Didley*



*Anne C.
Horney
TK-20*

DINSMORE, ELSA E. Buffalo, N. Y.
Kindergarten-Primary

Y. W. C. A.
One ship drives East, and one drives West,
By the self same wind that blows,
It's the set of the sails and not the gales
Which determines the way it goes.

DINSMORE, JANE KINGSLAND. . Buffalo, N. Y.
Grammar

Basketball
Tennis Tournament '23-'24
Record Staff
Senior Class Secretary
Class Poet
A ready smile, a helping hand and kindly cheer
All three have we when Janey's near.

DOE, BEATRICE E. Buffalo, N. Y.
Kindergarten-Primary

Art Kraft Klub
Elms Staff
Chairman of Decoration Committee
Everybody knows her, everywhere you go,
Everybody likes her, this we surely know.

DOHN, VIOLA G. Buffalo, N. Y.
Grammar

Glee Club '23
Clonian Sorority
Section Captain '25
Y. W. C. A.
"Thou living ray of intellectual fire."

DONLON, BERNHARD. Buffalo, N. Y.
Two Year General Industrial
Gifted with rare powers of speech.

DOW, WALTER MARROW . Irondequoite, N. Y.
Industrial Vocational

Tri Kappa Fraternity
I know no such thing as genius, it is nothing but
labor and diligence.

DOWNEY, ANNA. Corry, Pa.
Kindergarten-Primary

Art Kraft Klub
Glee Club
Theta Kappa Sorority Corresponding Secretary
Sorority Corresponding Secretary
Ways and Means Committee
Love makes those eloquent that love it.

DRAINE, JEANETTE R. Buffalo, N. Y.
Home Economics

Clonian Sorority Secretary '24
Bulletin Board Committee '22
H. A. Club
The truest touch of refinement
A mind that's brilliant and fair
A devotion to all that's worthy
A character that'll stand wear.

DUNCAN, LUCRETIA Newfane, N. Y.
Kindergarten-Primary

Y. W. C. A. '25
Born for success she seemed with grace to win,
with heart to hold, with shining gifts that took all
eyes.

DZIMINSKA, CHARLOTTE R. Buffalo, N. Y.
Intermediate

Y. W. C. A.
Glee Club
Elms Staff
Color Committee
The blush is beautiful, but it is sometimes incon-
venient.

ECKERT, GRACE Buffalo, N. Y.
Grammar

Theta Kappa Sorority
Happy am I, from care I'm free
Why aren't you all contented like me!

EDWARDS, MARION A. Buffalo, N. Y.
Grammar

Clonian Sorority
Y. W. C. A.
Sincere and true unto the end
She earns the greatest tribute, friend.

ELLIOT, MARION Buffalo, N. Y.
Kindergarten-Primary

Her life is all laughter
Her days are all a smile.

EVERITT, MARION Buffalo, N. Y.
Kindergarten-Primary

Glee Club
A friend in fair or foul weather.

FAUL, ELIZABETH H. Buffalo, N. Y.
Home Economics

Phi Upsilon Omicron, Pres. '25
Arethusa Sorority, Pres. '23
Bulletin Board Comm., '22
H. A. Club
Student Faculty Council, '24
Glee Club, Treas. '23
"Give to the world the best you have,
And the best will come to you."

FAY, GERTRUDE Buffalo, N. Y.
Home Economics

Art Kraft Klub
H. A. Club
She's a sweet little girl of the
Emerald Isle
With her flair and her laughter
And friendship worthwhile.





Pete 222

Freddie Jones

FEASLEY, BERTHA L. Orchard Park, N. Y.
Kindergarten-Primary

Gentle comes the world to those
That are cast in gentle molds.

FINSTERBACH, FRED C. Buffalo, N. Y.
Two Year General Industrial

Tri Kappa Fraternity
Glee Club, '24
Men's Club, '24
Record Staff, '24-25
Elms Staff
Secretary
Athletic Association Secretary
Dramatic Club '25
Class Day Committee
I saw and loved.

FISHER, MARION A. Buffalo, N. Y.
Kindergarten-Primary

Tri Sigma Sorority, president '25
Freshman Class, president '22
Record Staff
Picture Committee Chairman
Glee Club
Dramatic Club
Twelfth Night
Cradle Song
Queen of two hands she does her part
In every useful toil or art.

FITZGERALD, MARIE Olean, N. Y.
Intermediate

Orchestra Accompanist
Music resembles poetry, in each are nameless graces
which no methods teach,
And which a master hand alone can reach.

FLYNN, HELEN G. Buffalo, N. Y.
Kindergarten-Primary

Art Kraft Klub
Is it Helen's hair, or the rays of the sun
That brightens the room till our work is done?

FOOTE, MARGARET E. Tonawanda, N. Y.
Kindergarten-Primary

Tri Sigma Sorority
Glee Club
Always happy, always free
Always full of merry glee.

FOX, FREDERICA M. Buffalo, N. Y.
Grammar

Tau Phi Sorority, Section Captain '23
Treasurer of Dramatic Club
News Editor of Record
School Play, '24
Christmas Play, '23, '24
Chairman Class Day Committee
E'en tho vanquished, she
Could argue still.

FRASER, LOUISE R. Buffalo, N. Y.
Kindergarten-Primary

Glee Club
Exchange Editor Record '24
Dramatic Club, '22
Gondoliers
Tri Sigma Sorority
Never idle, never blue
Always happy, always true.

FRY, EVELYN Forestville, N. Y.
Home Economics

H. A. Club
Y. W. C. A.
She may be quiet, she may be small
But when she plys her needle she can beat them all.

FULLER, RUTH Buffalo, N. Y.
Kindergarten-Primary

Glee Club, vice-pres. '23
Music hath charms
And so Ruth has a plenty.

FURMAN, BERT W. Gainesville, N. Y.
Two Year General Industrial

Men's Club
Glee Club
Dramatic Club
Psi Phi Fraternity
Shall I go on? Or have I said enough?

FUTTERER, HELEN A. Buffalo, N. Y.
Intermediate

Clonian Sorority
She has a way with her and it's charming to all.

GENTNER, EUGENIA M. Buffalo, N. Y.
Grammar

She is charming as her hair is cheerful.

GEYER, CLIFFORD L. Buffalo, N. Y.
Two Year General Industrial

Psi Phi Fraternity, vice-pres. '24
Glee Club
Dramatic Club
So we'll go no more a'roving,
So late into the night.

GIBSON, CHARLES N. Buffalo, N. Y.
Grammar

President Tri Kappa Fraternity, '25
Men's Club
Vice-pres. Athletic Asso., '25
Elms Staff
Treas. Tri Kappa, '23
Treas. Orchestra
Vice President, Orchestra '24
Cap and Gown Committee
The brave alone may win the fair
You've heard the tale before
To Charlie then the prize we bring
Who through two years alone reigned king
O'er forty girls or more.

GINNANE, MARY H. Addison, N. Y.
Intermediate

Basketball, '23
What shall I say to you?
What can I say, better than silence is?



Helen Futterer "Clion"

Charles N. Gibson

Clifford L. Geyer

"Joe"



C. O. Gotham

Mary Graham

GOODMAN, JEANETTE F.Buffalo, N. Y.
Grammar

Record Staff, Ass't Ed. '23
Record Staff, Ed. in chief, '24, '25
Editor of 1923, Freshman Handbook
Glee Club, '23-'25
Art Kraft Club
Dramatic Club, '23-'25
Basketball
Christmas Play, '23, '24, '25
Chairman Ways and Means Committee
Elms Board
Finance Committee
She's winsome and shy
But she'll grow bolder by and by.

GOTHAM, CLINTON O.Watertown, N. Y.
Industrial Vocational

Men's Club
Save the surface and you save all.

GOVER, DONALD S.Batavia, N. Y.
Two Year General Industrial

Men's Club Secretary '25
Glee Club, '24, '25
Be checked for silence never taxed for speech.

GRAHAM, HAZEL K.Gasport, N. Y.
Kindergarten-Primary

Section Captain, '24, '25
Motto Committee
Her words, like so many nimble and airy servitors
trip about her at command.

GRAHAM, MARY C.Carrington, N. Dak.
Intermediate

Basketball, '23, '24
Y. W. C. A.
Tennis Tournament, '23
Glee Club
Chairman Color Committee
The shame is not in having sported
But in not breaking off the sport.

GREEN, ALICEBuffalo, N. Y.
Kindergarten-Primary

There does a sable cloud,
Twine forth her silver lining on the night,
And casts a gleam over this tufted grove.

GUNSOLLY, MARJORY L.Hamburg, N. Y.
Kindergarten-Primary

Y. W. C. A. '22
Tau Phi Sorority Treasurer '23-'24
A merry heart that laughs at care.

HABERER, LEAH JANISBuffalo, N. Y.
Kindergarten-Primary

Glee Club
Tri Sigma Sorority
As merry as the day is long.

HAHN, MARION L.Buffalo, N. Y.
Grammar

Why is she so quiet?
The wise are ever so.

HANRAHAN, JANEBuffalo, N. Y.
Grammar

Clonian Sorority
Section Captain
Picture Committee
The reason firm, the temperate will,
Endurance, foresight, strength and skill.

HANNEMAN, GEORGE C.Rochester, N. Y.
Industrial Vocational

Record Staff
Glee Club
Dramatic Club
Christmas Play
Men's Club
Elms Staff
Ring and Pin Committee
All great men are dead and I'm not feeling so well
myself.

HARRITY, LORETTALackawanna, N. Y.
Grammar

Nu Lambda Sigma
She's a tiny little maiden
With a smile for everyone
If she's not smiling for a purpose
She's smiling just for fun.

HARTMAN, MINNIEBradford, Pa.
Intermediate

Where the stream runs smooth, the water is deep.

HARTZELL, IDA E.Buffalo, N. Y.
Intermediate

Y. W. C. A.
Motto Committee
Nothing bestows so much beauty on a woman as
modesty.

HASKIN, HAZEL C.Cherry Creek, N. Y.
Grammar

Y. W. C. A.
Beware the fury of a patient man.

HAWKINS, ETHEL O.Dayton, N. Y.
Kindergarten-Primary

Cap and Gown Committee
Basketball
Of all those arts in which the wise excel
Nature's chief masterpiece is writing poetry well.

George Hanneman





Alton Heller

Hubert Hoderath
 Ψ Φ

HEBENSTREIT, ROSETTABuffalo, N. Y.

Kindergarten-Primary
 Section Captain, '22, '24
 Glee Club Secretary, '22
 Clionian Sorority Secretary, '23
 Glee Club President, '23
 Senior Class President, '25
 Gondoliers
 Her silver voice
 Is like the rich music of a summer bird.

HELLER, ALTON.....Schenectady, N. Y.

Two Year General Industrial
 Tri Kappa Fraternity Vice-Pres.
 Athletic Association Treasurer
 Record Staff
 Men's Club
 Finance Committee
 True wit is nature to advantage dressed.

HICKES, MILDRED V.....Buffalo, N. Y.

Kindergarten-Primary
 Glee Club Secretary, '25
 Ring and Pin Committee
 Calm, dignified and stately her poise
 Yet laughing and mischievous her eyes.

HISTON, EILEEN F.....Buffalo, N. Y.

Intermediate
 Dramatic Club
 Nu Lambda Sigma
 Section Captain
 And seemed to walk with wings, and tread in air.

HOCHGREBE, EMILY F.....Buffalo, N. Y.

Intermediate
 Basketball
 Coats little but knows much.

HODERATH, HUBERT.....Brooklyn, N. Y.

One Year Scholarship
 Psi Phi Fraternity
 Men's Club Sergeant at Arms
 Elms Staff
 Quotation Committee Chairman
 The gentleman and scholar.

HOELDTKE, ESTHER.....Attica, N. Y.

Grammar
 Glee Club
 Elms Staff
 Record Contributor
 The town that she comes from
 She tells us is quite small
 But it will grow in size you know
 If she teaches there next fall.

HOLLIDAY, GEORGE E.....Fulton, N. Y.

Industrial Vocational
 Glee Club
 Dramatic Club
 Chairman Motto Committee
 Genius hath electric power
 Which earth can never tame.

HALLORAN, HELENA M.....Franklinville, N. Y.

Grammar
 Lose no time, he always employed in something useful.

HOOPER, EVELYN M.....Franklinville, N. Y.

Intermediate
 Still water runs deep.

HORAN, ETHEL.....Buffalo, N. Y.

Kindergarten-Primary
 A lovable girl with heart full sincere.

HOWARD, FRANK E.....Lackawanna, N. Y.

Industrial Vocational
 Men's Club
 The less he said the more he heard;
 Now wasn't he the wise old bird?

HOYLE, CLAYTON S.....Plattsburg, N. Y.

Industrial Vocational
 Glee Club
 Male Quartet
 Dramatic Club
 Record Contributor
 Song Committee
 Men may come and men may go, but I go on forever.

HULL, LUCILLE.....Bergen, N. Y.

Intermediate
 Tau Phi Sorority
 Glee Club
 Y. W. C. A.
 Humor has justly been regarded as the finest perfection of poetic genius.

ISCH, LINETTE N.....Buffalo, N. Y.

Intermediate
 Glee Club
 Nu Lambda Sigma
 Elms Staff
 Y. W. C. A.
 Of all those arts in which the wise excell
 Nature's chief masterpiece is writing well.

JILLSON, LOUISE.....Buffalo, N. Y.

Kindergarten-Primary
 Glee Club '22-'25
 With countenance demure and modest grace.



Frank E. Howard

Linette N. Isch

J. Roger Johnson



JOHNSON, ROGER F.....Buffalo, N. Y.
Two Year General Industrial
Glee Club
Male Quartette
Song Committee
A goodly sort of fellow.

JORDAN, ISABEL H.....Buffalo, N. Y.
Grammar
Basketball
I do not let my pleasure interfere with my studies.

JOYCE, ROSE.....Buffalo, N. Y.
Grammar
Glee Club
Theta Kappa Sorority President '23
Section Captain '23
Dramatic Club
Taming of the Shrew
Ring and Pin Committee
Elms Staff
For dear is the Emerald Isle of the ocean
Whose daughters are fair as the foam of the wave.

KARL, RUDOLPH H.....Dunkirk, N. Y.
Industrial Vocational
Men's Club
The hand that rocks the cradle is the hand that rules the world.

KARNER, MARGARET H.....Kenmore, N. Y.
Kindergarten-Primary
Tri Sigma Sorority Corresponding Secretary '24
Christmas Play '23
Just smile all woes away.

KENNEDY, CHARLOTTE L.....Buffalo, N. Y.
Kindergarten-Primary
Tri Sigma Sorority Secretary '23
Dramatic Club '22
Christmas Play '22
No pleasure is complete
Without her presence sweet.

KENNEDY, MARY H.....Buffalo, N. Y.
Grammar
Be ever ready to follow your star.

KIGER, EDITH B.....Hamburg, N. Y.
Home Economics
H. A. Club
Y. W. C. A.
Arethusa Sorority, V. Pres. '22, Corr. Sec. '21
Elms Staff
Ring and Pin Committee
Pres. H. A. Class '25
Ways and Means Comm.
What is it makes us love her?
The droll quip or tilt of the head
The glint of her eyes in humor
And those qualities through which happiness lead.

KIRKLAND, HELEN G.Buffalo, N. Y.
Grammar
Theta Kappa Sorority
Nu Lambda Sigma
Y. W. C. A.
Glee Club
Dramatic Club
Come what will tomorrow for I have lived today.

KIRTLAND, ANNEBuffalo, N. Y.
Grammar
Arethusa Sorority
Gift Committee
Chairman of Better Speech Week Program
With all her faults, we love her still—but she never is that way!

KNELL, RUTH CAROLYNBuffalo, N. Y.
Intermediate
Clonian Sorority
Glee Club
Class Day Committee.
When do we eat?
Her eyes as stars of twilight fair.

KOENIG, MARION.....Buffalo, N. Y.
Grammar
Theta Kappa Sorority, Treas. '24
Glee Club Vice Pres. '24
Y. W. C. A.
We think she'll make a good writing teacher, for she loves to make "eyes."

KRAUS, LOLITA E.....Clarence, N. Y.
Home Economics
Y. W. C. A.
H. A. Club
Glee Club
Art Kraft Klub
Elms Staff
Invitation Committee
"If everyone in all the world loved work like you
And yet so loved to play,
This world would not be old and cross and mean
But only sweet and gay."

KREUTTER, GLADYS.....Alden, N. Y.
Grammar
Y. W. C. A.
Loyalty bespeaks truth.

KRONMAN, CHARLOTTEBuffalo, N. Y.
Grammar
Art Kraft Klub
I would be loathe to cast away my speech.

LANDAHL, ALICE E.....Lancaster, N. Y.
Intermediate
And I oft have heard defended
Little said is soonest mended



Gladys Kreutter



*Clarence
F. Loth*

LANG, MILDRED L.....Buffalo, N. Y.
Intermediate
Art Kraft Klub Secretary '24
The one who laughs must sure do well.

LAY, PAULINE B.....Irving, N. Y.
Kindergarten-Primary
Sincere in every deed and thought,
And pure of heart and mind.

LEE, WILBUR J.....Buffalo, N. Y.
Two Year General Industrial
Basketball '23-'24
Psi Phi Fraternity
Elms staff
Heaven's help is better than early rising.

LEGGATT, ELIZABETHBuffalo, N. Y.
Kindergarten-Primary
She's been a phantom of delight
Since first she gleamed upon our sight.

LENSEN, VIOLA B.....Buffalo, N. Y.
Home Economics
Phi Upsilon Omicron
Bulletin Board Committee
H. A. Club
"Charms strike the sight, but merit wins the soul."

LLOYD, VELMA ELIZABETHHornell, N. Y.
Intermediate
Y. W. C. A.
Nu Lambda Sigma
A rare combination of womanliness and good fellow-
ship.

LOTH, CLARENCE F.....Springville, N. Y.
Two Year General Indr
I have caught my heavenly jewel

LOWE, ALICE MARGARET.....Elmira, N. Y.
Grammar
Art Kraft Klub
Nu Lambda Sigma
A quiet damsel whose most noticeable character-
istic seems to be speaking when spoken to.

LYSTER, MARY A.....Medina, N. Y.
Intermediate
I lay me down to sleep
With little thought or care
Whether my waking find
Me here or there.

MacDONALD, MARGARET M.....Buffalo, N. Y.
Grammar
Tau Phi Sorority Secretary '23, President '24
President '24
"Gude folks are scarce, take care o' me."

MACKMIN, WILLIAM.....Niagara Falls, N. Y.
Industrial Vocational
No man ever wetted clay and then left it, as if
there would be bricks by chance and fortune.

MacLAUGHLIN, ELIZA KATHRYNNiagara Falls, N. Y.
Intermediate
Glee Club '23
She has a winning way and a pleasant smile
Keeping her dignity all the while.

MACNAUGHTON, RUTHBuffalo, N. Y.
Kindergarten-Primary
Tau Phi Sorority
Flower Committee
"Come and trip it as you go
On the light fantastic toe."

McDERMAND, VIOLA G.....Buffalo, N. Y.
Kindergarten-Primary
Theta Kappa Sorority
Glee Club
Chairman Song Committee
Those graceful acts, Those thousand discoveries
Which daily flow
From all her words and actions.

McDONALD, EDITH L.....Williamsville, N. Y.
Grammar
Nu Lambda Sigma
Glee Club
Art Kraft Klub
Tall and thin with lots of vim
She works she'll always be thin.

McFADDEN, MANOLA, A. C.Buffalo, N. Y.
Intermediate
Glee Club
This isn't an exercise
It's a stunt, we all agree.



Mary Lyster

William Mackmin

Viola McDermand

Edith McDonald



McGINNIS, MARIE.....Buffalo, N. Y.

Kindergarten-Primary
 There was a soft and pensive grace
 A cast of thought upon her face
 That suited well the forehead high
 The eye lash dark and down cast eye.

MAHER, GERTRUDE A.....Batavia, N. Y.

Intermediate
 There is society in the deepest solitude.

MANNIX, MARIE.....Buffalo, N. Y.

Intermediate
 Nu Lambda Sigma
 'Tis good to be merry and wise.

MARTIN, CATHERINE.....Buffalo, N. Y.

Intermediate
 I laugh for hope hath happy place with me.

MARTINY, CLARA.....Allegheny, N. Y.

Intermediate
 Her modest looks the cottage might adorn,
 Sweet as the primrose peeps beneath the thorn.

MARTIN, MARGARETBuffalo, N. Y.

Intermediate
 My tongue within my lips I rein
 For who talks much must talk in vain.

MAXWELL, DOROTHY B.....Buffalo, N. Y.

Grammar
 Dramatic Club
 Tau Phi Sorority
 Christmas Play, '23, '24
 Record Staff
 Wearing all that weight of learning like a flower.

MEASER, ELMA HELEN....Williamsville, N. Y.

Kindergarten-Primary
 Treasurer of Glee Club '25
 Finance Committee
 Blue were her eyes as the fairy-flax,
 Her cheeks like the dawn of day.

MERLE, EDITH M.....Buffalo, N. Y.

Intermediate
 We fear the social center room, has come to be her
 second home.

MILLER ESTHER.....Ebenezer, N. Y.

Kindergarten-Primary
 Theta Kappa Sorority Pres. '25
 "For she was jes' the quiet kind,
 Whose nature never varies."

MILLER, LEONORE, VIRGINIA..Curriers, N. Y.

Grammar
 Glee Club
 Y. W. C. A.
 Clonian Sorority
 Invitation Committee
 Ease of heart her every look conveyed.

MOORE, BEATRICEBuffalo, N. Y.

Kindergarten-Primary
 Glee Club '22-'25
 Strong-hearted, whole-hearted, loyal and true.

MOORE, ELLEN.....Silver Creek, N. Y.

Home Economics
 Theta Kappa Sorority
 H. A. Club, Pres. '22, Sec'y '23
 Treasurer Sophomore Class
 Some wise man from an ancient day
 Had the audacity to say:
 Good things do all in tiny bundles come.

MORGAN, PAULINEBuffalo, N. Y.

Kindergarten-Primary
 Glee Club
 Flower Committee
 Such Polly, are your sex—part truth, part fiction,
 Some thought, much whim and all a contradiction.

MORRANT, HAROLD ERNEST

Niagara Falls, N. Y.
 Industrial Vocational
 Glee Club
 Men's Quartette
 Men's Club
 To my friends and knockers
 I am the sunshine kid.

MORRIS, GERTRUDE SARAH....Buffalo, N. Y.

Kindergarten-Primary
 Dramatic Club
 A conscientious worker she,
 From morn till eve, a busy bee.



Edith M. Miller

Leonore V. Miller

Harold Ernest Morratt

George W. Mullenhoff



MULLENHOFF, GEORGE W. Buffalo, N. Y.
Industrial Vocational
Worry never made men great so why should I worry?

MULLIGAN, MARTHA G. Buffalo, N. Y.
Grammar
Art Kraft Klub
Nu Lambda Sigma
That is as well said as if I had said it myself.

MUNDT, MILDRED M. Blaisdell, N. Y.
Grammar
Blessed with a pleasant and unassuming manner.

MURBACH, NELSON J. Buffalo, N. Y.
Two Year General Industrial
Psi Phi Fraternity Secretary
Glee Club
Men's Club
Ye Gods! annihilate but space and time,
And make two lovers happy.

MURRAY, PAULINE. Buffalo, N. Y.
Home Economics
Art Kraft Klub
H. A. Club
"Let us hear your laughter when we pass the
earthly wildwood,
Sliding up the bannisters beyond the merry skies."

MURRAY, RUTH H. Buffalo, N. Y.
Intermediate
She was a scholar, a ripe and good ore.

MYERS, ELEANOR J. Buffalo, N. Y.
Intermediate
Personally, I have a great admiration for stupidity.

Eleanor J. Myers

NEFF, MILDRED M. Buffalo, N. Y.
Kindergarten-Primary
Tri Sigma Sorority
For if she will, she will, you may depend on't,
And if she won't she won't, and there's an end on't.

NORTH, HAROLD H. Syracuse, N. Y.
Industrial Vocational
Section Captain
Men's Club
Glee Club
Male Quartet
Orchestra
Dramatic Club
Ways and Means Committee
Responsibility goes hand in hand with capacity and power.

NORTHROP, MARGARET. LaSalle, N. Y.
Home Economics
Arethusa Vice-Pres. '23, '24
H. A. Club
"For she is wise if I can judge of her
And fair she is of that mine eyes be true
And true she is, as she hath proved herself."

NOVACK, GOLDIE Buffalo, N. Y.
Kindergarten-Primary
Basketball '23
Our own sweet Goldy will make a fine teacher
Perhaps it's because she is such a good preacher.

O'BRIEN, HELEN R. Buffalo, N. Y.
Intermediate
Too swift arrives as tardy as too slow.

O'TOOLE, CHRISTOPHER Moravia, N. Y.
Industrial Vocational
Men's Club
Glee Club
Must I be called shy because I am modest?

PADDON, BYRON D. Buffalo, N. Y.
Industrial Vocational
The silent thinkers make the world progress.

PERRY, KATHRYN M. Attica, N. Y.
Kindergarten-Primary
She's pretty to walk with,
And witty to talk with,
And pleasant too, to think on.

PETTILLON, ALICE L. Buffalo, N. Y.
Intermediate
Flower Committee
Modest and unassuming, she has made her place
in the esteem of her friends.



*Harold H. North
139 Strong Ave.
Syracuse, N.Y.*

*Christopher O'Toole
Moravia
N.Y.*



Marge

*Lee D. Powell
'25*

Edward F. Quinn

PICKUP, MARGUERITE.....Conewango Valley, N. Y.
Grammar
Y. W. C. A.
Her talents are many
Her failings are few,
Just try to find out
The things she can't do.

POST, MARION H.....Buffalo, N. Y.
Kindergarten-Primary
Art Kraft Klub
Basketball
Glee Club
Color Committee
Tri Sigma Sorority
Adapted for anything—fun, study, work, or pranks.

POWELL, LEE D.....Buffalo, N. Y.
Two Year General Industrial
Tri Kappa Fraternity
Basketball '23-'24
Men's Club '23
I am not in the roll of common men.

PRIDE, LUCETTA G.....Buffalo, N. Y.
Intermediate
Nothing can be truer than fairy wisdom. It is as true as sunbeams.

QUARTLEY, MARION A.....Batavia, N. Y.
Intermediate
A smile for all.

QUINN, EDWARD F.....Buffalo, N. Y.
Two Year General Industrial
Basketball
My cake is dough.

RAYMOND, ROWENA.....Ceres, N. Y.
Kindergarten-Primary
Gondoliers
Glee Club Secretary
Orchestra President
Y. W. C. A. Vice President
Section Captain
Flower Committee
Song Committee
At length cried she "I'll marry
What should I tarry for?"

RHODES, MARY E.....Tonawanda, N. Y.
Grammar
Clonian Sorority
Basketball
He who invented work should have finished it.

RICHARDS, VIOLA.....Holland, N. Y.
Grammar
Good things come in small packages.

Marguerite A. Richardson
RICHARDSON, MARGUERITE A.....Hornell, N. Y.
Kindergarten-Primary
Section Captain '25
Glee Club '22
She is a maiden fair and good and sweet,
'Tis one's good luck, if her they chance to meet.

RIEFEL, LUCILLE M.....North Collins, N. Y.
Grammar
Glee Club
Y. W. C. A.
Up to the minute from top to toe,
She can even get a Ford to go.

RISLEY, CHARLOTTE L.....Buffalo, N. Y.
Home Economics
Glee Club '23, '24, '25
Accompanist for Glee Club '22-23-24-25
Pianist for "The Gondoliers"
Chapel Accompanist '23-24-25
Song Committee
How that girl can play! We expect she will be a professor, giving organ lessons, soon.

ROBINSON, FLORA C.....Buffalo, N. Y.
Kindergarten-Primary
Thy fair hair my heart enchained.

ROLLINS, HERBERT R.....Buffalo, N. Y.
Industrial Vocational
Tri Kappa Fraternity
Stately and tall he moves, the chief of a thousand for grace.

ROSOWSKI, MARY M. W.....Depew, N. Y.
Grammar
Orchestra
Y. W. C. A.
Nu Lambda Sigma
Since music hath its charms, she must be a lovely charmer.

ROUSSELLE, YVONNE.....Buffalo, N. Y.
Grammar
Art Kraft Klub
"Call me early, Mother o' mine,
I guess tomorrow I'll be there on time."

Marguerite A. Richardson



Herbert R. Rollins



RUNFOLA, MARYBuffalo, N. Y.

Intermediate

There are whole veins of diamonds in thine eyes
Might furnish crowns for all the Queens of earth.

Mary Runfola

RUTHVEN, MILDRED.....Watertown, N. Y.

Grammar

A knowledge seeker and a diligent worker.

RYAN, MARY J.....Buffalo, N. Y.

Grammar

Basketball
Art Kraft Klub
Seldom absent, always on time
If Mary were like that, wouldn't it be fine?

SAGER, WILLIAM R.....Buffalo, N. Y.

Industrial Vocational

Men's Club
The wise and the active conquer difficulties by
daring to attempt them.

SAGGESE, CARMELLA E.....Depew, N. Y.

Grammar

Orchestra '25
Glee Club, '25
Basketball
Record Staff '25
Nu Lambda Sigma '25
"And still the wonder grew and grew
That one small head could carry all she knew."

SANFORD, REBA E.....Buffalo, N. Y.

Grammar

Glee Club
"She does the most and says the least of herself."

SCHMIDT, GERTRUDEBuffalo, N. Y.

Home Economics

H. A. Club Treas. '21
Treas. H. A. Class '21
Senior Invitation Committee
She's a quiet worker until you know her
Then her real charm and worth
Grows greater day by day.

SCHUTT, ELEANOR A.....Buffalo, N. Y.

Kindergarten-Primary

Y. W. C. A.
Art Kraft Klub
The sun may have its troubles, but it keeps the
bright side out.

SHEA, JOHN T.....Buffalo, N. Y.

Two Year General Industrial

Basketball '23-'24
Men's Club '23-'24
Ring and Pin Committee
His soul is on fire!
Sprinkle him.

SHEARER, MRS. EUGENE MAYBURY.....

McGraw, N. Y.

Home Economics

H. A. Club
"Little deeds of kindness, little words of love,
Help to make earth happy like the heavens above."

SHEPARD, RUTH E.Derby, N. Y.

Grammar

Basketball
Sincerity is my watchword.

SHEPARD, REBECCANorth Evans, N. Y.

Grammar

Basketball
She keeps her head when all about are losing theirs.

SHEPARD, MARGARET,.....Akron, N. Y.

Intermediate

She has a good time wherever she goes,
But she knows a lot more than you might suppose.

SHEPKER, BLANCHE R....North Evans, N. Y.

Kindergarten-Primary

They mocked thee for too much curiosity.

SHOEMAKER, THELMA C.....Buffalo, N. Y.

Kindergarten-Primary

Arethusa Sorority
Dramatic Club
Glee Club '24
Basketball '23
Record Staff
Class Treasurer '24
Cap and Gown Committee Chairman
Section Captain '24
She attains whatever she pursues.

SISLER, FRANK A.....Yonkers, N. Y.

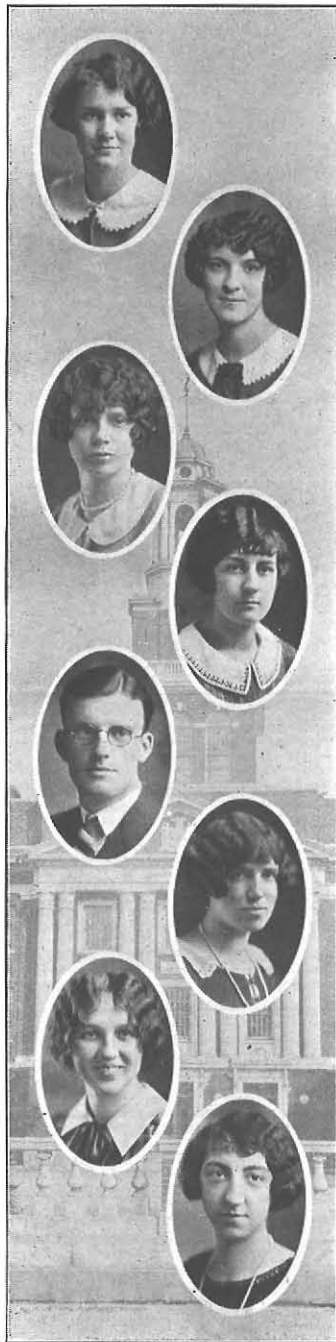
Industrial Vocational

Psi Phi Fraternity
Though modest, nature has written on his unem-
barrassed brow "Gentleman".



John T. Shea

Frank A. Sisler



SLOAN, EMMA M.Buffalo, N. Y.
 Kindergarten-Primary
 Tri Sigma Sorority Treasurer '23-'25
 Art Kraft Klub, '22
 Dramatic Club '23
 Glee Club '22-'23
 What ever one does, one should do with all one's might.

SLOAN, ELIZABETH MARYBuffalo, N. Y.
 Kindergarten-Primary
 Art Kraft Klub—'22-'23
 Dramatic Club, '22-'23
 Life is a jest and all things show it. I thought so once but now I know it.

SMITH, CATHERINEBuffalo, N. Y.
 Intermediate
 Tau Phi Sorority
 Dramatic Club
 Art Kraft Klub
 This little lady will out talk us all.

SMITH, LORAINÉLockport, N. Y.
 Home Economics
 Tri Sigma Sorority
 H. A. Club
 "None but the brave deserve the fair."

SMITH, WALTER J.Buffalo, N. Y.
 Grammar
 Basketball
 Senior Class Vice-President
 Second Year Class Vice President
 Ring and Pine Committee Chairman
 Dramatic Club
 Taming of the Shrew
 Men's Club
 Fate tried to conceal him by naming him Smith.

SMITH, WILMA G.Albion, N. Y.
 Kindergarten-Primary
 Record Staff—'24-'25
 Basketball—'23-'25
 Y. W. C. A. '23, '24, '25
 In many sports she doth excel
 And hath a merry heart as well.

SOUTHWICK, ERMA M.Franklinville, N. Y.
 Intermediate
 No lark more blithe than she.

SPORNEY, IRENE F.Buffalo, N. Y.
 Grammar
 Basketball Captain '22-'25
 She has a gladsome merry way.

STEIN, EDWARDBrooklyn, N. Y.
 Industrial Vocational
 Dramatic Club
 Record Contributor
 "The Play's the Thing."

STEISSLINGER, FLORENCE M. ..Buffalo, N. Y.
 Intermediate
 Y. W. C. A. '22-'23
 Let our weakness be what it will
 Mankind will still be weaker.

STONE, HELEN E.Buffalo, N. Y.
 Kindergarten-Primary
 The distance is not great, from her head to her feet
 But what there is of her, is indeed very sweet.

STROOTMAN, ESTHERBuffalo, N. Y.
 Home Economics
 Phi Upsilon Omicron, Treas. '25
 Clionian Sorority Treas. '24
 H. A. Club Secy, '23
 Section Captain '22
 Vice President H. A. Class '24
 Bulletin Board Committee
 Student Faculty Council '24
 Class Day Committee
 Kind words are the music of the world.

SWEETAPPLE, PEARL L.Buffalo, N. Y.
 Intermediate
 Elms Staff
 Thy modesty is a candle to thy merit.

TENNENT, DONALD R.Caledonia, N. Y.
 Industrial Vocational
 Thou hast caused printing to be used.

THOMAS, LACESON H.La Salle, N. Y.
 Industrial Vocational
 An exception to the rule that good things come in small packages.

TORREY, GRACE R.Buffalo, N. Y.
 Grammar
 Glee Club
 Gondoliers
 Clionian Sorority
 Variety is the spice of life.



Edward Stein

R Tennent

*Grace Torrey
 Died Sept. 1927*



URSITTI, ALPHA B.Buffalo, N. Y.
Grammar

Glee Club
Basketball
Y. W. C. A.
Art Kraft Klub
Christmas Play
Baseball
Her trademark is a smile.

VAN HARREN, PETER J.Oswego, N. Y.
Industrial Vocational

Glee Club
Men's Club Treasurer
Motto Committee
Joy is the sweet voice.

VAN KEUREN, GERTRUDE I.Savona, N. Y.
Home Economics

Theta Kappa Sorority
H. A. Club
"She never walks from place to place
But vanishes without a trace,
Quick in work, alert and brief,
None in her friendship will come to grief."

VIAN, JOHN L.Brooklyn, N. Y.
Industrial Vocational

Glee Club
Men's Quartet
He left so pleasing on their ear his voice that listening still they seemed to hear.

VOGT, ALLEN J.Buffalo, N. Y.
Two Year General Industrial

Senior Class Treasurer
Finance Committee
Tri Kappa Fraternity
I would fain die a dry death.

WAGNER, JEANNETTEBuffalo, N. Y.
Grammar

Y. W. C. A.
Art Kraft Klub
Athletic Association Treasurer '24
Basketball '23, '24, '25
Section Captain '23-24
Come, let us argue awhile.

WAGNER, MILDREDEast Aurora, N. Y.
Kindergarten-Primary

Basketball '23
Full of pep and smile and cheer
We all like her, she's a dear.

WALKER, WALLACE J.Buffalo, N. Y.
Two Year General Industrial

Men's Club
With an air of solid desperation.

WARNKE, ETHEL C.West Falls, N. Y.
Grammar

Art Kraft Klub
Glee Club
Y. W. C. A.
Senior Color Committee
Straight and sedate, yet fond of amusement, too.

WASMUTH, MARIE C.Buffalo, N. Y.
Kindergarten-Primary

Faithful and true
Thru and thru
A good friend she is to many a one, too.

WATSON, GEORGE W.Buffalo, N. Y.
Two Year General Industrial

Psi Phi Fraternity President
Men's Club
Glee Club
Gift Committee Chairman
Much may be made of a Scotchman, if he is caught young.

WAVER, FERNKenmore, N. Y.
Kindergarten-Primary

Theta Kappa Sorority
I'll be merry, I'll be free
I'll be sad for nobody.

WEIMAR, ELOISEBuffalo, N. Y.
Home Economics

Arethusa Sorority Treasurer '24
Y. W. C. A.
H. A. Club
Glee Club
Elms Staff
Finance Committee
Song Committee
"Full of pep, ideals, ability and fame
An ardent worker of a virulent strain,
With school at heart and a kindly art
She's won a place in every heart."

WELLS, MILDRED M.Akron, N. Y.
Intermediate

Nu Lambda Sigma
A modest maid and true.

WOLLSCHLAGER, HELENBuffalo, N. Y.
Kindergarten-Primary

Y. W. C. A.
A girl she seemed of cheerful yesterdays and confident tomorrow.





WEPPNER, CAROLINE D.Buffalo, N. Y.
Home Economics

Phi Upsilon Omicron Recording Secretary '24
Clonian Sorority Corresponding Secretary '22
H. A. Club
Elms Staff
With her kind pleasant smile
She makes friends all the while,
To one so true hearted and gay
Success is so sure to come and stay.

WHITE, FRANCES E.Lockport, N. Y.
Intermediate

"Shall I ever see a bachelor of three score again?"

WIGHTMAN, LUCYNorth Collins, N. Y.
Grammar

Basketball
Y. W. C. A.
Short and sweet.

WILFERT, RUTH E.Buffalo, N. Y.
Grammar

President Y. W. C. A. '24
Glee Club
Class Day Committee
Not so noisy, but far from glum,
A school without her would be less fun.

WILLS, MARY E.Youngstown, N. Y.
Intermediate

Y. W. C. A. '24-'25
At all times of the day
She has something to say.

WOODWARD, RUTHEast Aurora, N. Y.
Home Economics

Phi Upsilon Omicron Corresponding Secretary, '25
Arethusa Sorority Treasurer, '23, Vice President '25
Y. W. C. A. President '23
Cap and Gown Committee
H. A. Club, Treasurer '22, President '25
"To know her is to love her
To name her is to praise."

ZACHER, FRANCES M.Buffalo, N. Y.
Grammar

Elms Staff
Record Staff
Dramatic Club
Blessed Birthday '23-'24
Invitation Committee
No time for pleasure
Her whole time is devoted to "Art".

In Memoriam



ETHEL FAXLANGER
Class of 1927
June 8, 1906 April 2, 1925



EVELYN GIFFORD
Class of 1925
February 20, 1905 April 23, 1924



KATHARINE SMITH
Class of 1925
January 30, 1904 August 9, 1924



NORENE A. PAUL
Class of 1927
April 13, 1907 March 4, 1925

THAT
GRAND AND GLORIOUS
APRIL
28TH



CLASSES



B. DOE

Class Officers

Class of 1926

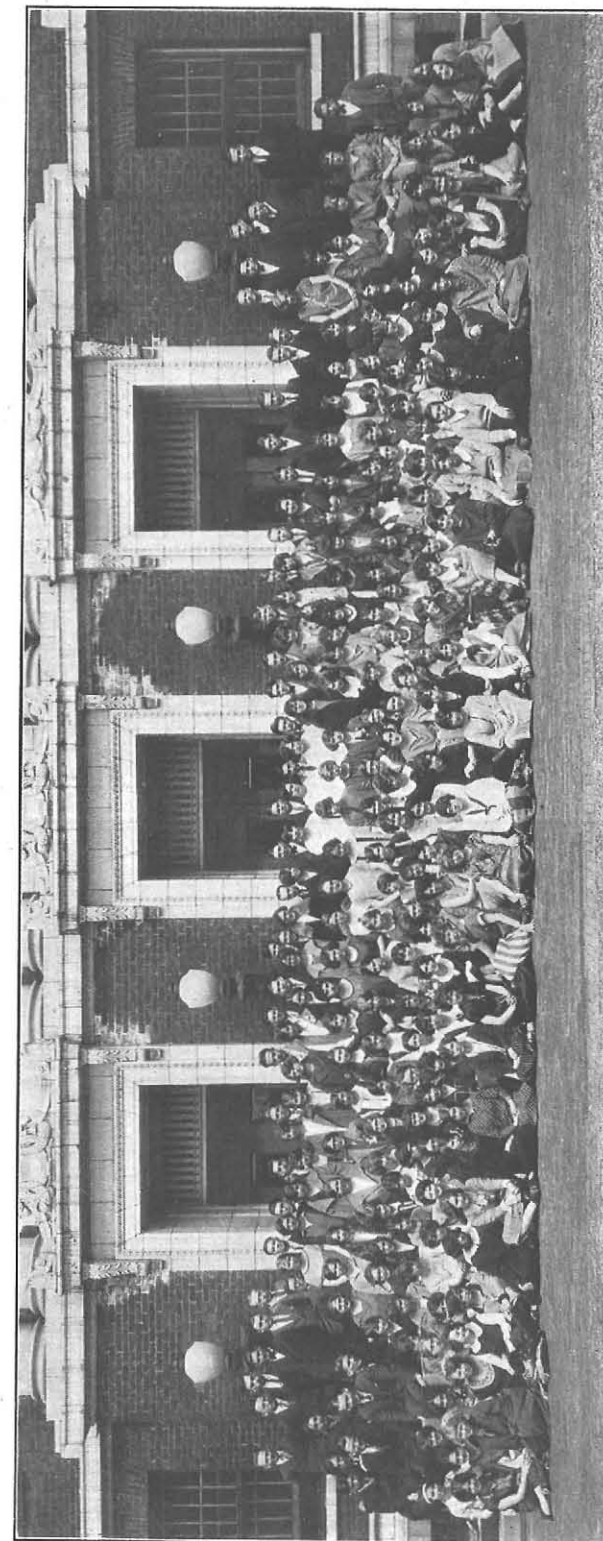
MILDRED B. BARROWS	<i>President</i>
GERTRUDE K. RODENS	<i>Vice President</i>
ALFRED H. DAHL	<i>Secretary</i>
MARY M. MORAN	<i>Treasurer</i>
MINNIE F. APSEY	<i>Faculty Student Council Representative</i>

Class of 1927

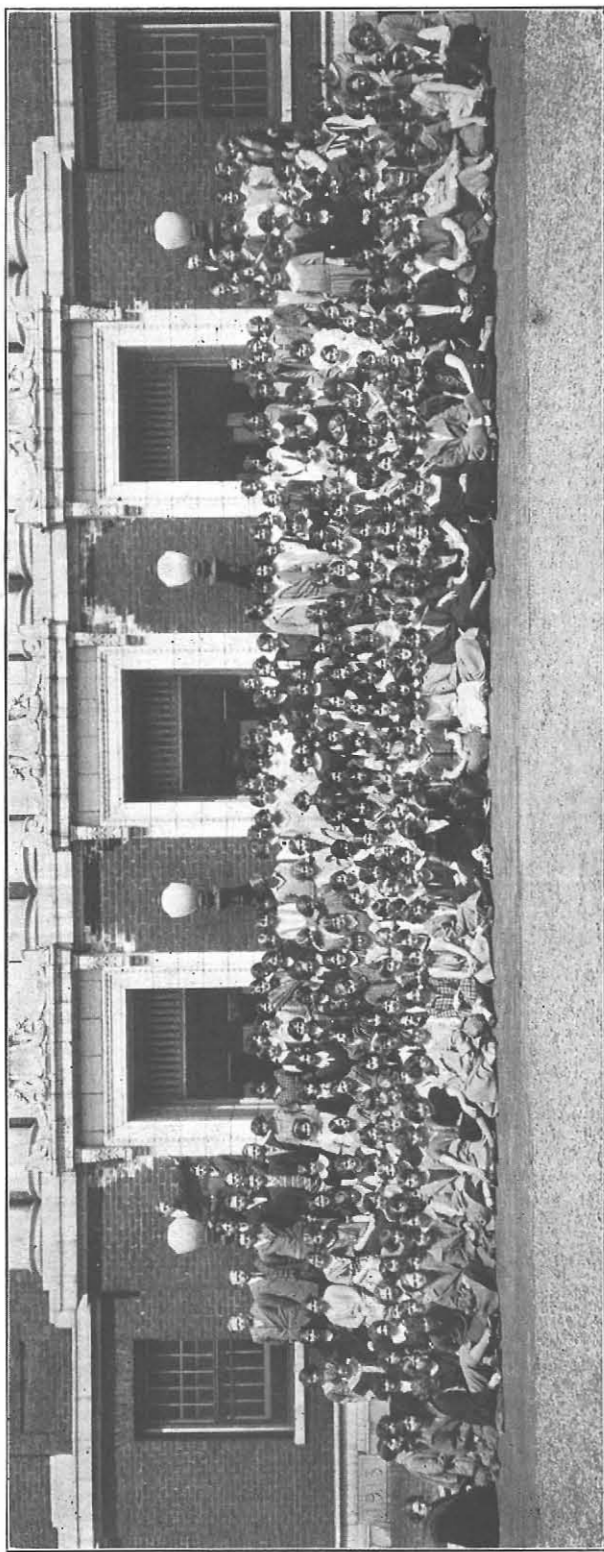
ROBERT H. BLACK	<i>President</i>
ELEANOR BACKUS	<i>Vice President</i>
AGNES PARRY	<i>Secretary</i>
GORDON DELAIR	<i>Treasurer</i>
MARGARET KINZLEY	<i>Faculty Student Council Representative</i>

Class of 1928

MYRA SUMNER	<i>President</i>
ELIZABETH CURRAN	<i>Vice President</i>
CAROLINE LUM	<i>Secretary</i>
WINIFRED MAHONEY	<i>Treasurer</i>



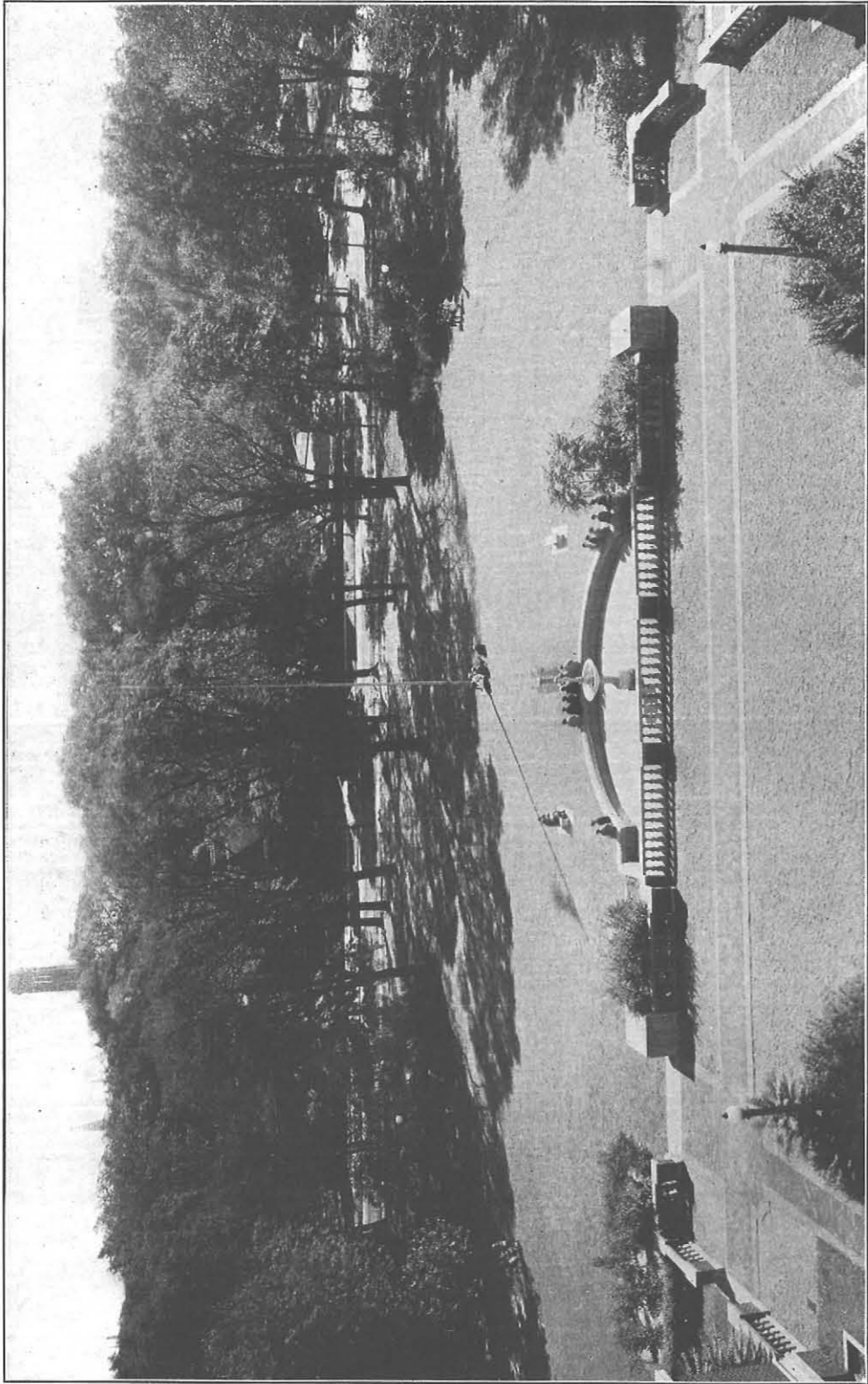
CLASS OF 1926



CLASS OF 1927

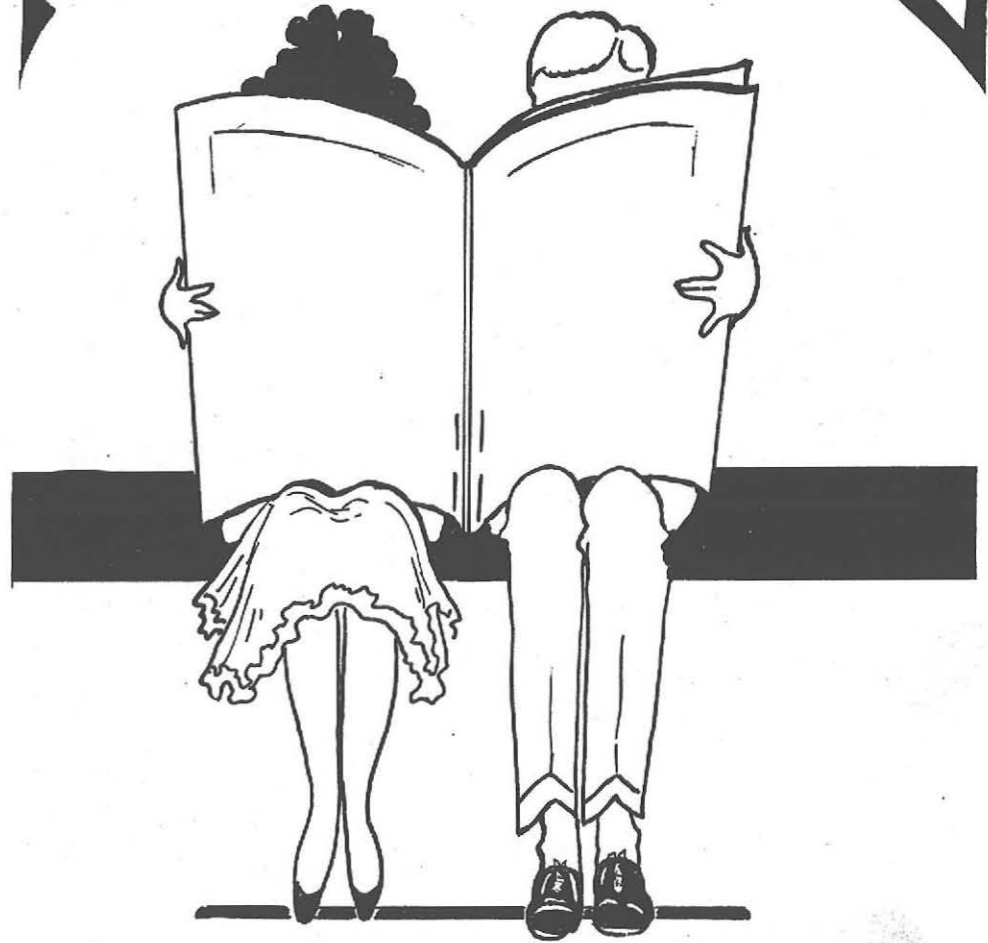


CLASS OF 1928

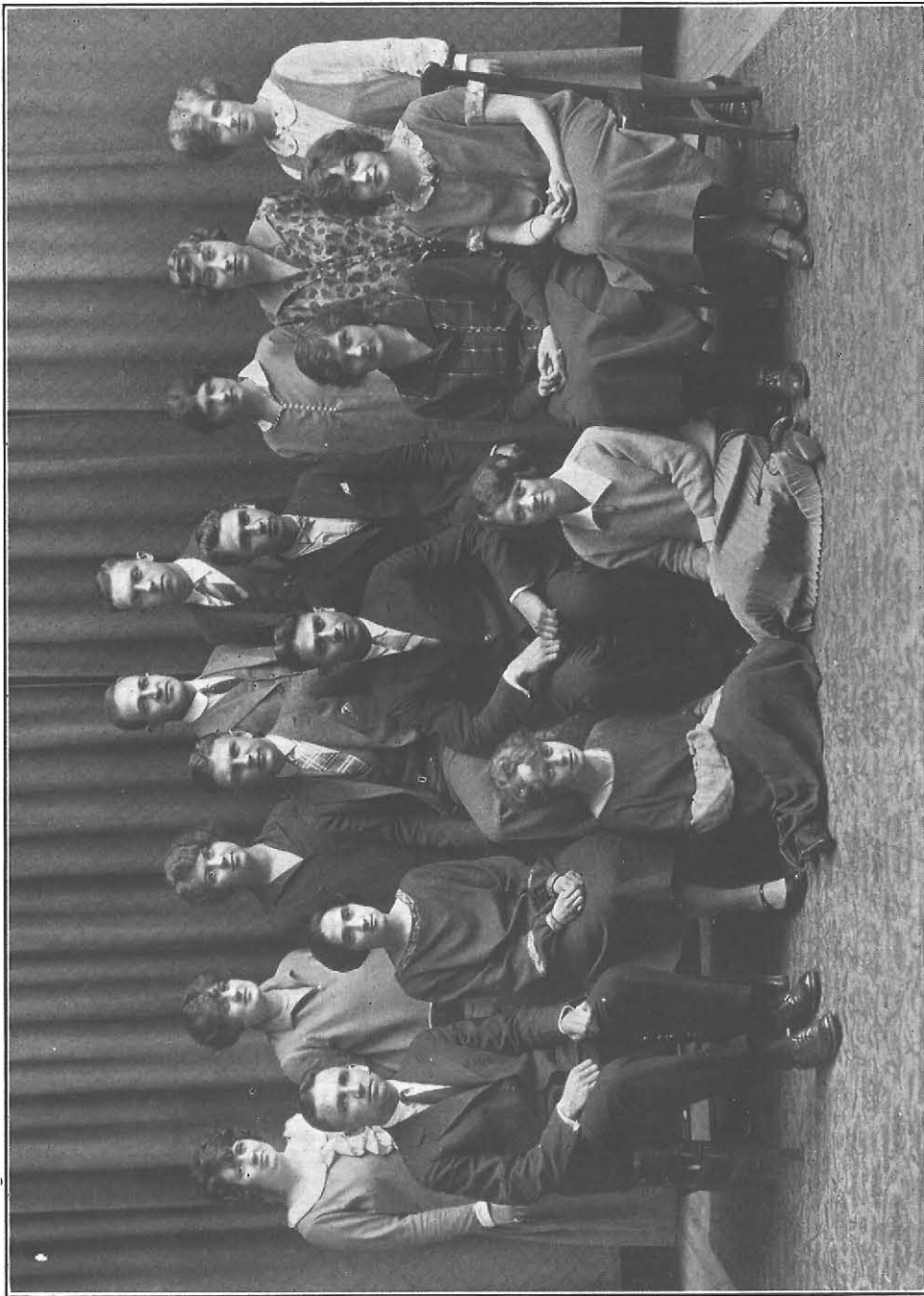


THE CAMPUS FROM THE TOWER

PUBLICATIONS



B. Doe.



THE ELMS STAFF

Elms Staff

HARRY ABATE	<i>Editor-in-Chief</i>
MISS KEMPKE	<i>Faculty Adviser</i>

BOARD OF EDITORS

ROSE JOYCE	<i>Literary Editor</i>
CHARLOTTE DZIMINSKA	<i>School News Editor</i>
ARTHUR AHR	<i>Business Manager</i>
ELEANOR CHENEY	<i>Circulation Manager</i>
LOLITA KRAUS	<i>Art Editor</i>

ASSOCIATE EDITORS

Wilbur Lee	Charles Gibson	Linette Isch
Fred Finsterbach	Beatrice Doe	Edith Kiger
Frances Zacher	George Hanneman	Jeanette Goodman
Eloise Weimar	Caroline Weppner	Esther Hoeldtke
	Pearl Sweetapple	



THE RECORD STAFF

The Record Staff

JEANETTE F. GOODMAN, '25 *Editor-in-Chief*
 MISS E. MULHOLLAND *Faculty Adviser*
 MISS M. HANSON *Faculty Adviser*

EDITORIAL STAFF

DOROTHY CROLL, '25 *Literary Editor*
 FREDERICA FOX, '25 *News Editor*
 DOROTHY PAGEL, '26 *Athletic Editor*
 MARGARET SHEEHAN, '26 *Follies Editor*
 ARTHUR F. AHR, '25 *Art Editor*

ASSOCIATE EDITORS

Jane Dinsmore, '25	Philip Repert, '26	Mary Moran, '26
Fred Finsterbach, '25	Harriet Cooke, '26	Frances Zacher, '25
Alton Heller, '25	Wilma Smith, '25	Clarence Young, '26

Business Staff

RAYMOND M. BOA, '25 *Business Manager*
 MARION FISHER, '25 *Advertising Manager*
 THELMA SHOEMAKER, '25 *Circulation Manager*
 DOROTHY YOUNG, '26 *Proofreader*

ASSISTANTS

Dorothy Maxwell, '25	Howard Schwenk, '26
----------------------	---------------------

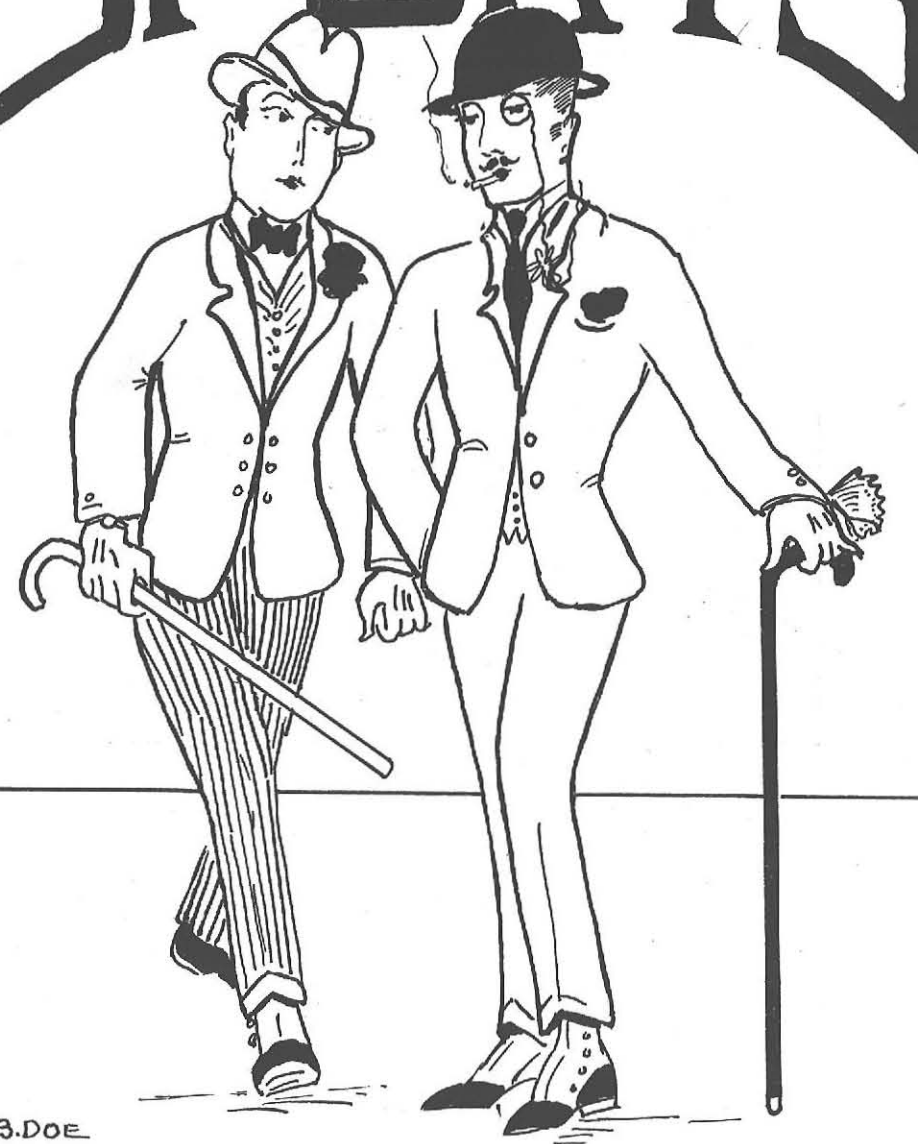
REPORTERS

Maurice Rovner, '26	Carmella Saggese, '25
George Hanneman, '25	



← notes

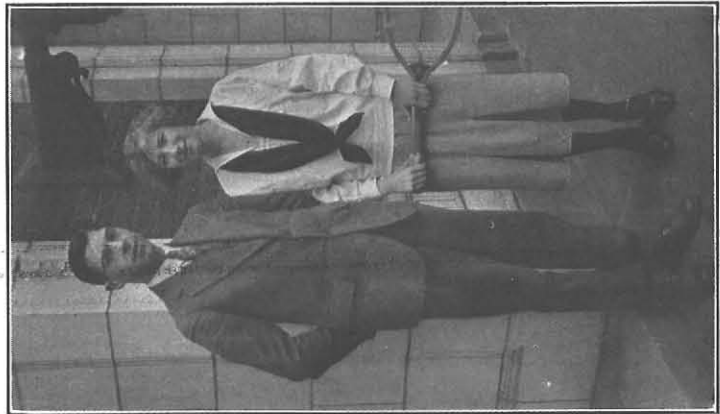
SPORTS



B.DOE

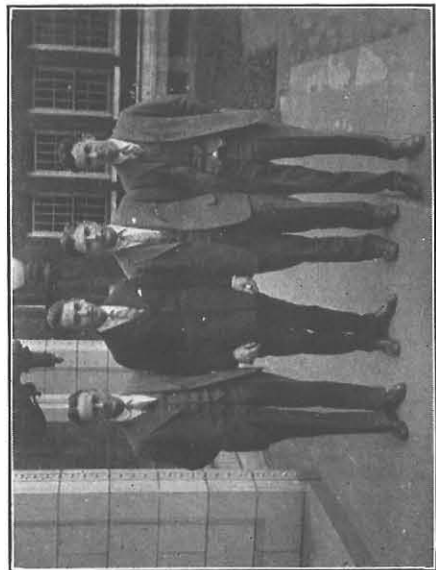


HEALTH DEPARTMENT



TENNIS CHAMPS

Daisy Weimar



ATHLETIC ASSOCIATION

Athletic Association

Advisory Board

Faculty Members

MISS HOUSTON

MR. PERKINS

MR. CLEMENT

Officers

HOWARD VAN HOFF	President
CHARLES GIBSON	Vice President
FRED FINSTERRACH	Secretary
ALTON HELLER	Treasurer

HEALTH DEPARTMENT

MISS HOUSTON

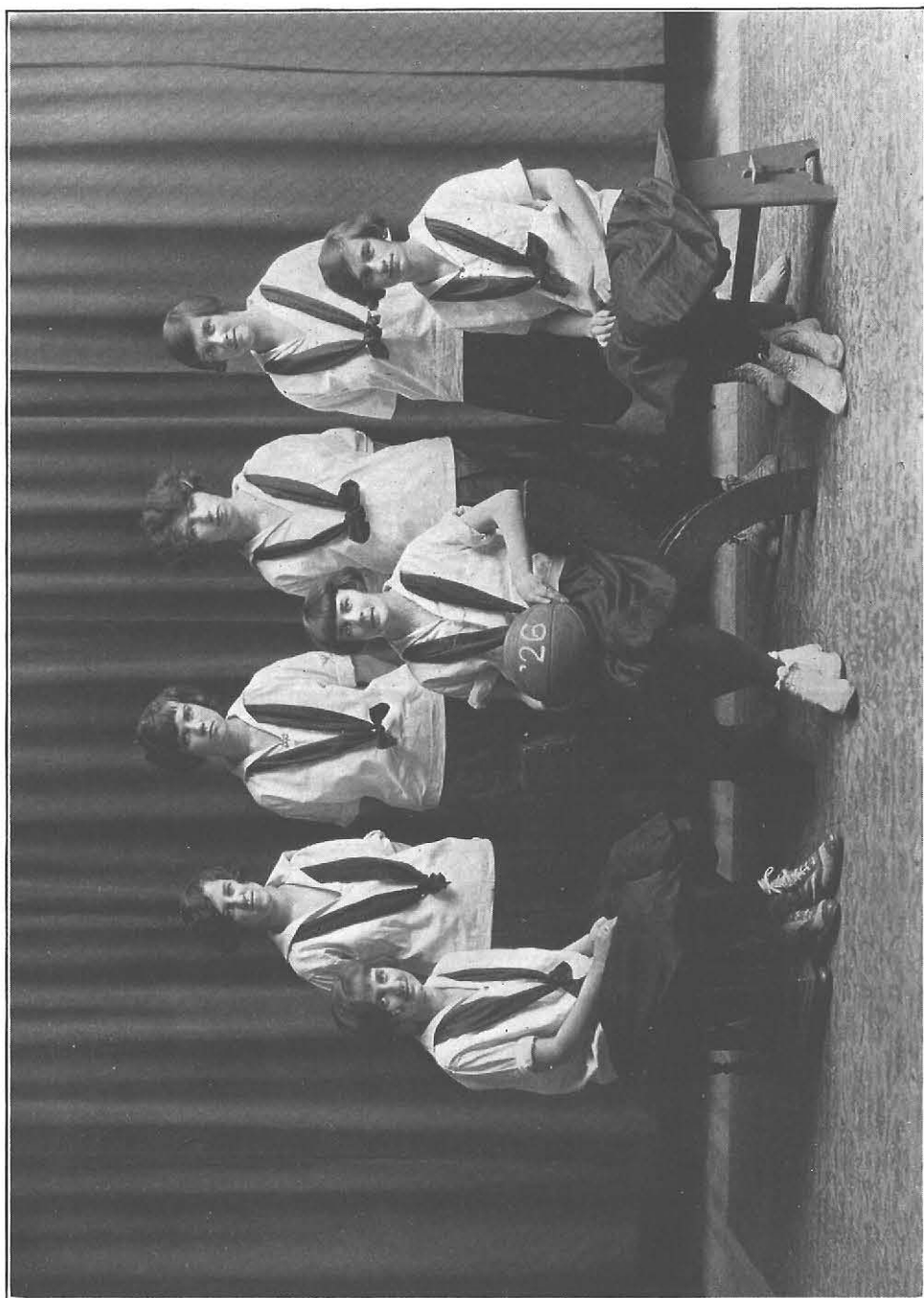
MISS SALOM

MISS TURNER

TENNIS CHAMPIONS

Daisy Weimar—Winner of the girl's fall tennis tournament.

Joseph Crotty—Winner of the boy's fall tennis tournament.



SECOND YEAR GRAMMAR I

GIRL'S ATHLETICS

TOURNAMENT GAMES AND SCORES

<i>Team</i>	<i>Games Won</i>	<i>Games Lost</i>	<i>Points Scored</i>
Third Year	3	2	86
Second Year Grammar I	4	0	106
Second Year Grammar II	1	3	52
H. A. Freshmen	0	4	31
First Year Section I	2	2	36
First Year Section II	2	2	48
First Year Section III	0	2	7
First Year Section IV	0	2	32
First Year Section V	4	2	143
First Year Section VI	1	2	56
First Year Section VII	4	1	116
First Year Section VIII	1	2	28



FIRST YEAR SECTION V

The following teams were chosen by the players as the best from all the Junior and Senior teams, and were awarded their class numerals:

ORANGE TEAM

(Picked from 2 Upper Classes)

Mary Ryan (f.)
 Mary Congreve (f.)
 Marjorie Sullivan (s. c.)
 Irene Sporney (j. c.)
 Carmella Saggese (g.)
 Mary Graham (g.)

Substitutes

Doris Jackson
 Gertrude Maloney
 Jeanette Wagner

BLACK TEAM

(Picked from Freshmen)

Mary Moynihan (f.)
 Alice Urshel (f.)
 Dorothy Parks (j. c.)
 Alice Weinheimer (s. c.)
 Agnes Parry (g.)
 Eleanore Backus (g.)

Substitutes

Dorothy Schmidt
 Dorothy Wildman
 Mary Hurdt

WINNERS OF UPPER CLASS
 TOURNAMENT

(Second Year Grammar I)

Mary Congreve (f.)
 Mabel Oberley (f.)
 Margaret Hurley (j. c.)
 Doris Jackson (s. c.)
 Gertrude Maloney (g.)
 Genevieve McLane (g.)

WINNERS OF FRESHMAN
 TOURNAMENT

(First Year Section V)

Mary Moynihan (f.)
 Dorothy Parks (f.)
 June Miller (j. c.)
 Agnes Parry (s. c.)
 Margaret Owens (g.)
 Winifred Phillip (g.)



WHEN FRIENDS ARE ENEMIES

SNAPS



A PRAYER FOR JUNE 15



A STUNT-NITER



BUFFALO NORMAL INDUSTRIAL SOCIETY



THETA-KAPPA



ALL STARS



AT ALLEGHENY PARK



B.DOE



FACULTY STUDENT COUNCIL

Faculty Student Council

FACULTY COMMITTEE

MR. S. CLEMENT *President*

FACULTY MEMBERS

Miss Boorman	Miss Harris
Miss Hanson	Miss Small
	Mr. Phillippi

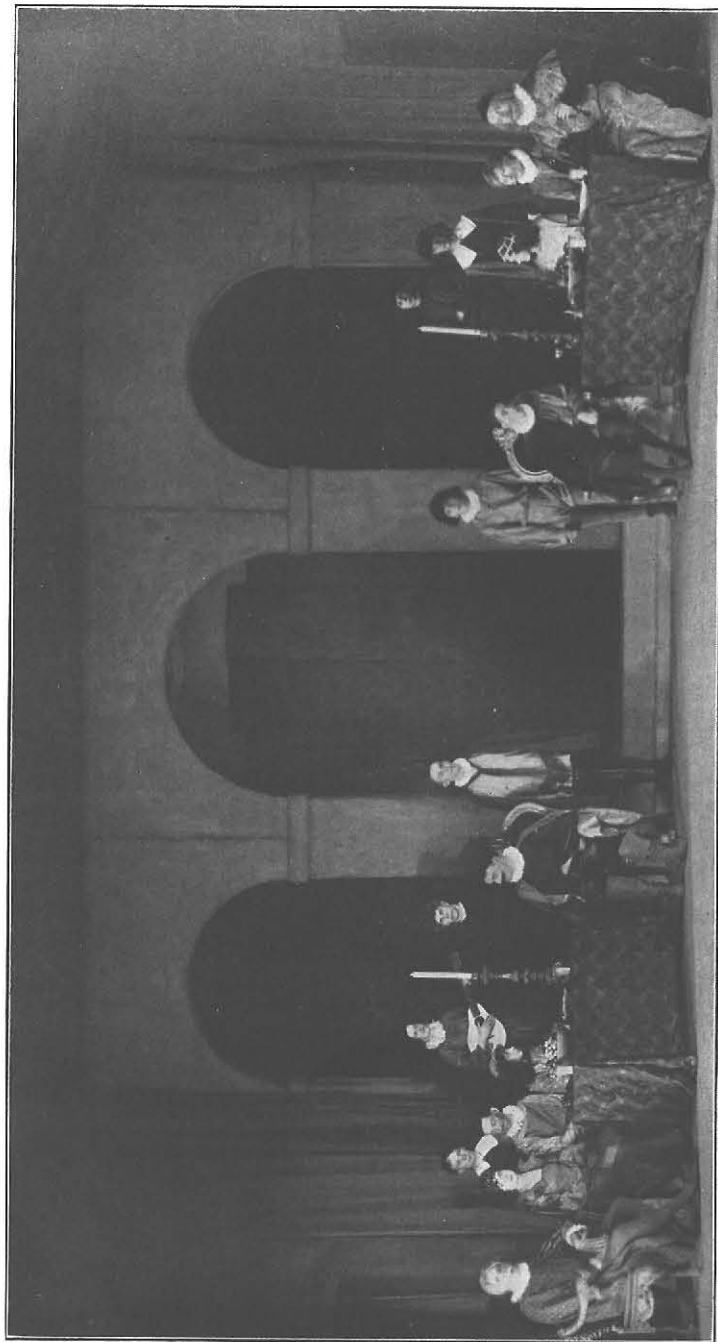
STUDENT MEMBERS

Arthur Ahr	Dorothy Croll
Minne Apsey	Rosetta Hebenstreit
Mildred Barrows	Gladys Hepworth
Robert Black	Margaret Kinzley

Auxiliary Committee

All Section Captains

The object of this organization is to facilitate helpful co-operation between the faculty and the students in furthering the welfare of the school and the student body. The Council has general supervision over all student activities, including social affairs, athletics, publications, and student organizations.



A SCENE FROM "THE TAMING OF THE SHREW"

Dramatic Club

OFFICERS

HELEN COOKE	President
MARGENE HARRIS	Vice President
FREDERICA FOX	Treasurer
LEAH HARTLAND	Secretary
MISS KEELER	Director

The Taming of the Shrew

CHARACTERS

Baptista, a gentleman of Padua	Harold H. North
Vincentio, a merchant of Pisa	Clayton S. Hoyle
Lucentio, son of Vincentio	John D. Coughlin
Petruchio, a gentleman of Verona	Walter J. Smith
Gremio	} suitors of Bianca	Clifford L. Geyer
Hortensio		
Tranio	} servants to Lucentio	George E. Holliday
Biondello		
Grumio	} servants to Petruchio	Frederick C. Finsterbach
Curtis		Frank Barrett
Nathaniel		William Peck
Philip		Murray D. Lynds
Sugarsop		Jacob Feldstein
Joseph		Edward Brunner
A Pedant	George E. Biddlecombe
A Haberdasher	Bert W. Furman
Servant to Baptista	Price Aderman
Katharina	} daughters to Baptista	Edith H. Kennebrook
Bianca		
Widow	Rose Joyce

Guests: Marion A. Fisher, Helen Cooke

Musicians: Fredericka M. Fox, Alton Heller, F. Roger Johnson

Page: Dorothy Young

Director, Miss Keeler



A SCENE FROM "THE BLESSED BIRTHDAY"

CAST OF

"The Blessed Birthday"

A Christmas Miracle PlayBy Florence Converse

THE PEOPLE OF THE PLAY

THE ANGELS

Angel of the AnnunciationMargene Harris
 Angel of the NativityMarion A. Fisher
 Angel of the ResurrectionEdith H. Kennebrook

THE HOLY FAMILY

JosephGeorge Hanneman
 MaryThelma Shoemaker
 JesusDorothy A. Young

THE CHILDREN

John the BaptistGertrude L. Meyers
 AbnerAgnes Parry
 HezekiahHelen F. Haskill
 EliGrace Regan
 TobiasCatherine Smith
 RuthEleanor Kindlund
 MiriamFrances M. Zacher
 LeahDorothy Stanley
 EstherEdith Merrill

THE WEDDING PARTY

The BrideFrederica Fox
 The BridegroomFrank Barrett
 Mother of the BrideRosalie House
 Father of the BrideH. H. North
 GuestsJeanette Goodman, Linda Hallett, Dorothy Maxwell

The Place—Nazareth.

THE CHORUS

Louise McMahon, *Leader*

Harriet Cooke	Rosetta Hebenstreit
Madeline Blaisdell	Rose Joyce
Minnie Brink	Marion Koenig
Benedetta Di Francisco	Leonore Miller
Angell Ferris	Rosamond Olief
Ruth Fuller	Rowena Raymond

ALPHA URSITTI

Also Three Angels

Play directed by Jane M. Keeler



ORCHESTRA Amy Newman '27.

The Orchestra

MISS HURD	Director
ANGELL FERRIS	President
MARJORY SULLIVAN	Secretary and Treasurer
MARY WINTER	} Librarians
PETER SAGGESSE	

VIOLINS

Mary Bresnahan
 Raymond Burke
 Evelyn Collins
 Catherine Dwyer
 Angell Ferris
 Josephine Hurt
 Hajnal Kokar
 Florence Mason
 Amy Newman
 Darius Ormsby
 Carmella Saggese
 Peter Saggese
 Lucy Stephenson
 Rowena Raymond
 Louise Ren
 Mary Rosowski
 Veronica Twohey
 Mary Winter

PIANISTS

Marie Fitzgerald
 Janice Lang

CELLO

Marjory Sullivan

CORNETS

Frank Barrett
 Wallace Ormsby

PICCOLO

H. H. North

BASS VIOL

Harold Vogt

FLUTE

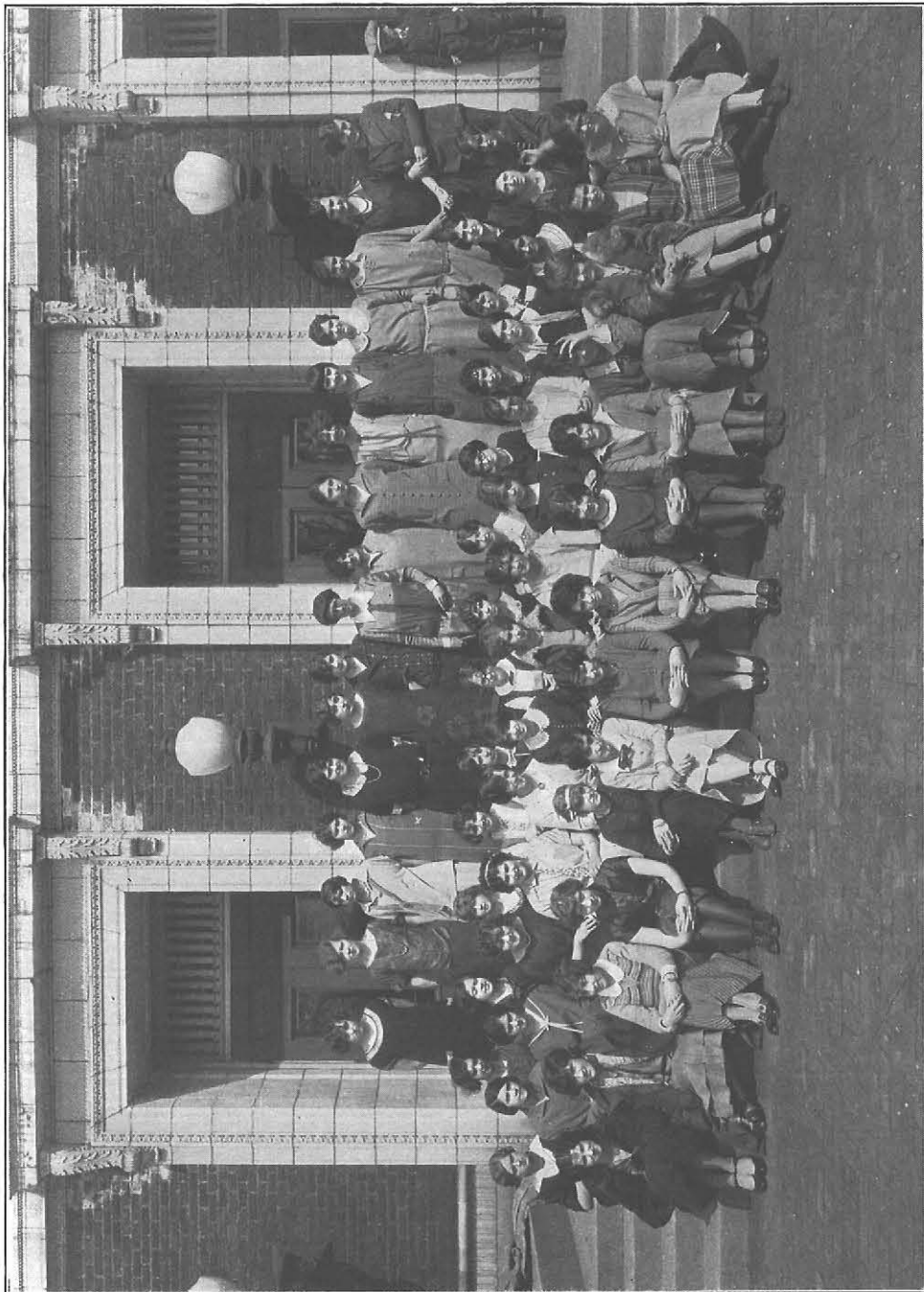
Bernice Plummer

DRUMMERS

James Moir
 Ellis Sloan

TROMBONE

Edwin Seil



GIRL'S GLEE CLUB

Girl's Glee Club

MISS SPEIR	<i>Director</i>
EDITH KENNEBROOK	<i>President</i>
MARION KOENIG	<i>Vice President</i>
MILDRED HICKES	<i>Secretary</i>
ELMA MEASER	<i>Treasurer</i>
ALICE URSHEL	<i>Librarian</i>
CHARLOTTE RISLEY	<i>Accompanist</i>

FIRST SOPRANO

Mildred Barrows	Mary Graham	Lydia Nelson
Catherine Becker	Evelyn Grampp	Helen Newton
Evelyn Bell	Kathryn Glor	Mildred Ralyea
Helen Best	Miriam Heafner	Rowena Raymond
Lillian Brown	Marion Hurst	Carmella Saggese
Nellie Casten	Alice Kidder	Arline Scully
Eleanor Cheney	Helen Kirkland	Grace Torrey
Harriet Cooke	Helen Li Vecchi	Alice Urshel
Winifred Cruickshank	Dorothy Maccomb	Ethel Warnke
Anna Downey	Edith McDonald	Mildred Weber
Marion Fisher	Alice McNally	Marguerite Wendel
Benadetta di Francesco	Elma Measer	Helen Zeilbeer
Jeanette Goodman	Beatrice Moore	Anne Rodell
	Pauline Morgan	

SECOND SOPRANO

Madeline Blaisdell	Esther Hoeldtke	Lolita Kraus
Minnie Brink	Linette Isch	Kathryn Madden
Blanche Dolph	Louise Jillson	Rosamond Olief
May Ducker	Rose Joyce	Viola Richards
Charlotte Dziminska	Edith Kennebrook	Reba Sanford
Erma Euller	Margaret Kinzly	Kathryn Schaad
Ruth Fuller	Marion Koenig	Charlotte Risley
Mildred Hickes	Dorothy Kraus	Ruth Wilfert
Alice Hodge		Ruth Holbrook

ALTO

Eleanor Backus	Doris Livermore	Lenore Miller
Doris Ducker	Gertrude Mackinder	Dorothy Orr
Angell Ferris	Manola McFadden	Agnes Parry
Ruth Knell		Alpha Ursitti



MEN'S GLEE CLUB

Men's Glee Club

NED E. CASEY *President*
 GEORGE E. BIDDLECOMBE, JR. *Vice President*
 FRANK E. BARRETT *Secretary and Treasurer*
 MISS SPEIR *Director*
 FRANK COLUMBUS *Accompanist*

FIRST TENOR

Frank E. Barrett Bertrand W. Furman
 F. Kyril Dee Peter J. Van Haaren

SECOND TENOR

John D. Coughlin Peter R. Saggese
 Albert C. Di Cesaro Elton F. Shaver
 F. Roger Johnson George W. Watson

FIRST BASS

Ned E. Casey Clayton S. Hoyle
 Walter F. Chavel Walter H. Janowsky
 Walden S. Cofran Laceson H. Thomas
 Alfred H. Dahl Harold G. Vogt

SECOND BASS

George E. Biddlecombe, Jr. George C. Hanneman
 Donald S. Gover William O. Huth
 George Holliday Carl H. Kumpf
 Harold H. North



ART KRAFT KLUB

Art Kraft Klub

PURPOSE: TO SEEK BEAUTY; TO FIND IT; AND TO INTERPRET IT FOR THE WORLD.

OFFICERS

MINNIE BRINK	President
MOLLY MORAN	Vice President
ELSA SANDERS	Recording Secretary
LYDIA NELSON	Corresponding Secretary
NORENE PAUL (Died March 4, 1925)	} Treasurer
LYDIA NELSON	

HONORARY MEMBERS

Mr. Bradley
Miss Brigham

Miss Hanson
Miss Sprague

CLASS OF 1925

Lillian Banduhn
Norma Blaney
Minnie Brink
Charlotte Bromley
Alberta Congdon
Marjorie Depew
Lydia Dickman
Beatrice Doe
Gertrude Fay
Helen Flynn

Lolita Kraus
Mildred Lang
Alice Lowe
Edith Macdonald
Molly Moran
Martha Mulligan
Pauline Murry
Eleanor Schutt
Alpha Ursitti
Ethel Warnke

CLASS OF 1926

Louise Dawson
Gladys Hepworth
Marion MacVittie
Dorothy Moore
Helen Moulton

Mary Palumbo
Elsa Sander
Ellen Schoenborn
Margaret Sheehan
Mary Sterling

Gladys Wallbridge

CLASS OF 1927

Ada Bindeman
Helen Geyer
Marion I. Gisel
Margaret Gustafson
Leah Hartland
Dorothy Hoffman
Marian Hurst
Margaret Kemp

Esther Kranz
Doris Livermore
E. Lydia Nelson
Elizabeth Schwartzott
Beatrice Tanner
Alma Taber
Frances Tonkin
Emily M. Trachsel

Gertrude Vincent

CLASS OF 1928

Evelyn Gast

Myra Sumner



NU LAMBDA SIGMA

Nu Lambda Sigma

Established April 3, 1924

OFFICERS

ALFRED LABIAK	<i>President</i>
GENEVIEVE O'BRIEN	<i>Vice President</i>
HELEN DE H. NEWTON	<i>Secretary</i>
GRACE M. MUSCARELLA	<i>Treasurer</i>

CLASS OF 1925

Charlotte Bromley	Alice M. Lowe
Anna May Greene	Marie Mannix
Loretta Harrity	Martha Mulligan
Eileen Histon	Mary Rosowski
Linette Isch	Carmella Saggese
Helen Kirkland	Peter Saggese
Velma Lloyd	Mildred Wells
	Mary Winter

CLASS OF 1926

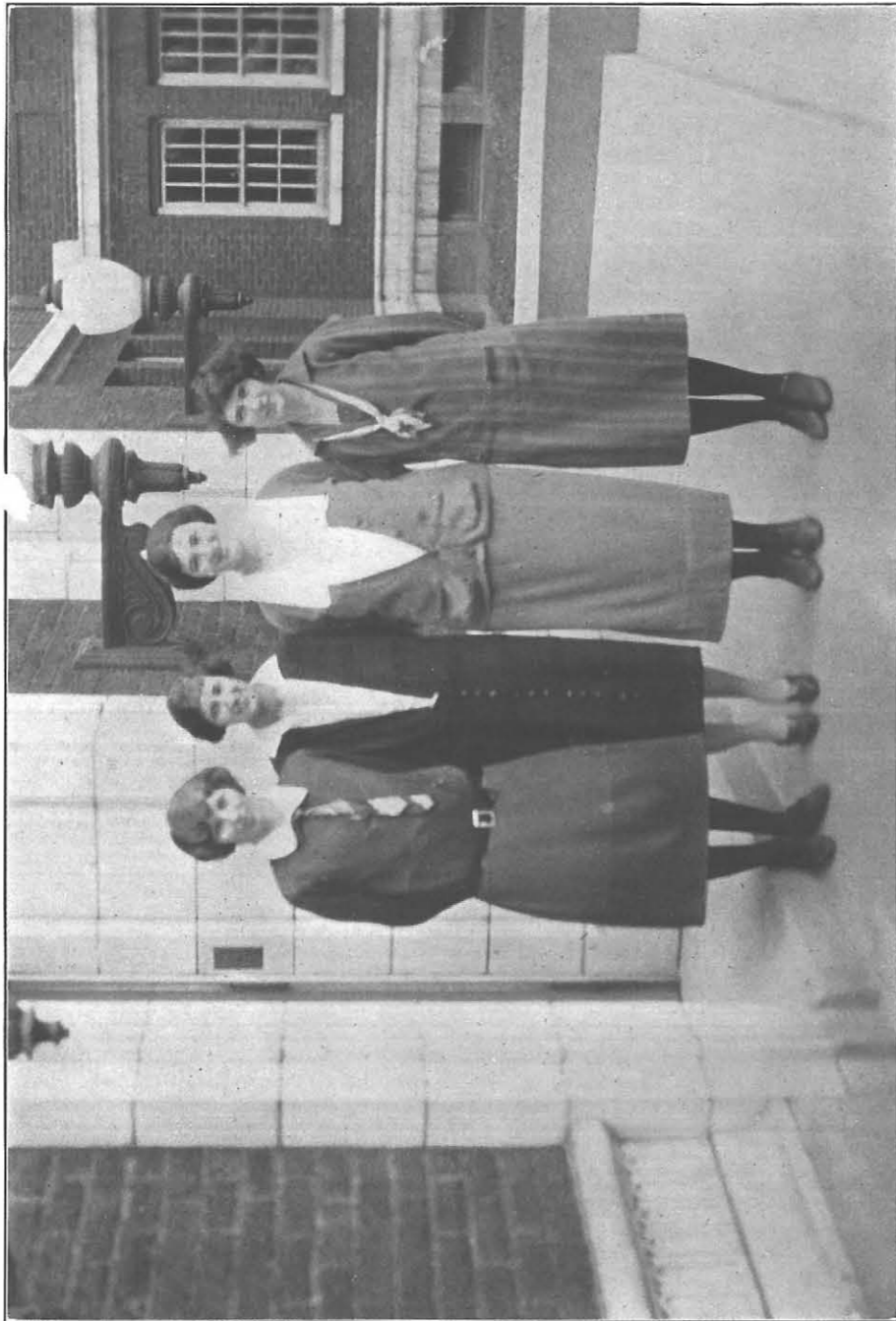
Margaret Breen	Gertrude Maloney
Mary Congreve	Mary Moran
Virginia Cossaboon	Eugenie Nicolas
Anne Dorsey	Minnie Olson
Erma Euler	Margaret O'Neill
Agnes Ferry	Dorothy Pagel
Helen Gibson	Mary Palumbo
Angeline Guidice	Grace Regan
Florence Jacobson	Ruth Steingruber
Czesia Kowal	Mary Sterling
Helen Li Vecchi	Josephine Tauriello
Dorothy McCarthy	Evelyn K. Ward
Genevieve McLane	Evelyn White

CLASS OF 1927

W. Price Aderman	Dorothy Schmidt
Ada Binderman	Ada Belle Schultz
Alida Riefler	Beatrice Tanner
Ruth Scheu	Gladys Taylor

CLASS OF 1928

Lois K. Bell	Lorraine Eastman
	Beatrice Moulton



OFFICERS OF THE HOME ECONOMICS CLUB

Home Economics Club

RUTH WOODWARD	President
GRACE PETRIE	Vice President
LYDIA NELSON	Secretary
MARY E. HOUGHTON	Treasurer

This club is open to all students in the Homemaking Department who wish to become members. It is now affiliated with the National Home Economics Association.



Y. W. C. A.

Y. W. C. A.

Motto: "By their honor ye shall know them."

OFFICERS

HELEN MOULTON	President
EMMA COLEMAN	Vice President
MINNIE APSEY	Secretary
LEONORE MILLER	Treasurer
MARGUERITE PICKUP	Undergraduate Representative

HONORARY MEMBER

Miss Reed

CALENDAR

September—Tea in honor of new students. Membership campaign.
 October—House Party at Forty Acres. Recognition Service.
 November—Silver Bay Meeting. Noon Assembly programs.
 December—Christmas party. Christmas baskets.
 February—Miss Bryson from Central "Y" visited Normal "Y".
 March—Normal "Y" entertained by Industrial Club.
 April—Tag Day and dance. Election of officers.
 May—Party for Industrial Club. House Party at Forty Acres.
 June—Installation of officers. Silver Bay Conference.



MEN'S CLUB

Men's Club

F. KARL DEE, '25	President
HAROLD CAMPBELL, '26	Vice President
DONALD GOVER, '25	Secretary
PETER J. VAN HAAREN, '25	Treasurer
MR. C. PERKINS	Faculty Adviser
HUBERT HODERATH, '25	Sergeant-at-Arms

CLASS OF 1925

Frank W. Alexander	Frank E. Howard
Arthur F. Ahr	Rudolph H. Karl
Leslie W. Clark	Gas. E. Kurns
Alfred W. Cowan	Harold E. Marrant
F. Kyril Dee	Harold H. North
Bert W. Furman	Christopher O'Toole
Clifford L. Geyer	William Sager
Clinton O. Gotham	Laceson H. Thomas
Donald Gover	Peter J. Van Haaren
George H. Hanneman	George W. Watson
Hubert Hoderath	John S. Webster

CLASS OF 1926

William Baldwin	Felix W. Howe
Frank E. Barrett	Wm. Redden
George E. Biddlecombe, Jr.	Bryan Shottin
Harold Campbell	Donald Stark
Ned E. Casey	Howard Schwenk
Wahlter Chavel	Clarence Young
Harold Engdahl	Walter Zimmerman
Clarence Genner	Murray Lynds

SNAPS



A FUTURE CLASSMATE



SOME OF GRAMMAR II



JUST JEANETTE



SEE THE BIRDIE!



A CLASS IN HYGIENE



FAR FROM NORMAL



BABY JANE



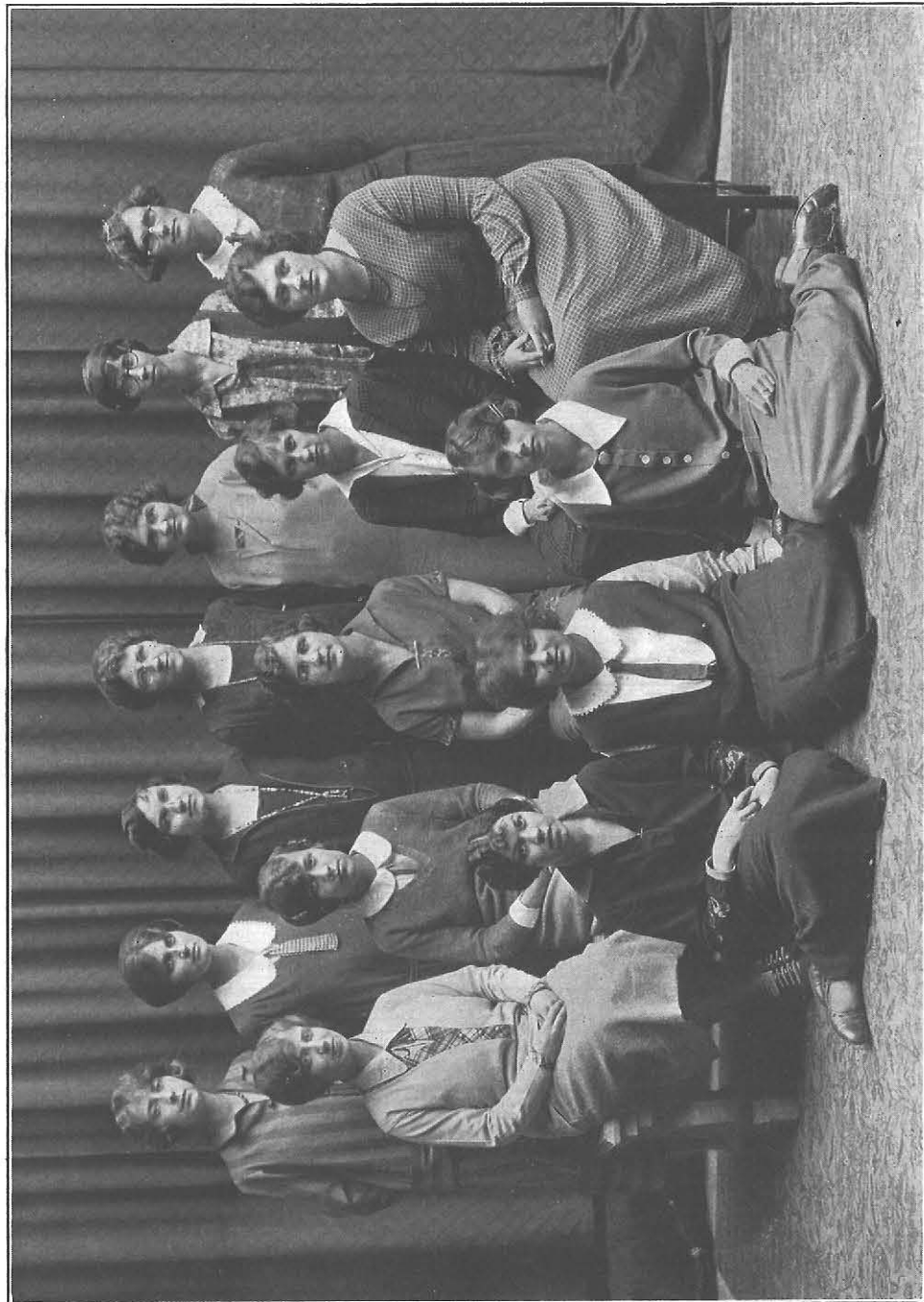
TRI-SIGMA !! SUNSET BEACH



BABY HELEN

SORORITIES FRATERNITIES





PHI UPSILON OMICRON

Phi Upsilon Omicron

MU CHAPTER

National Honorary Home Economics Sorority

Date of establishment in Buffalo—December 22, 1923

OFFICERS

ELIZABETH H. FAUL, '25	President
ELNA L. ALLEN, '25	Vice President
RUTH WOODWARD, '25	Corresponding Secretary
CAROLINE D. WEPPNER, '25	Recording Secretary
ESTHER STROOTMAN, '25	Treasurer

FACULTY MEMBERS

Miss Myrtle V. Caudell, *Honorary Member* Miss Alice Brigham, *Honorary Member*
Miss Francis Crooker, *Alpha Alumna*

CLASS OF 1925

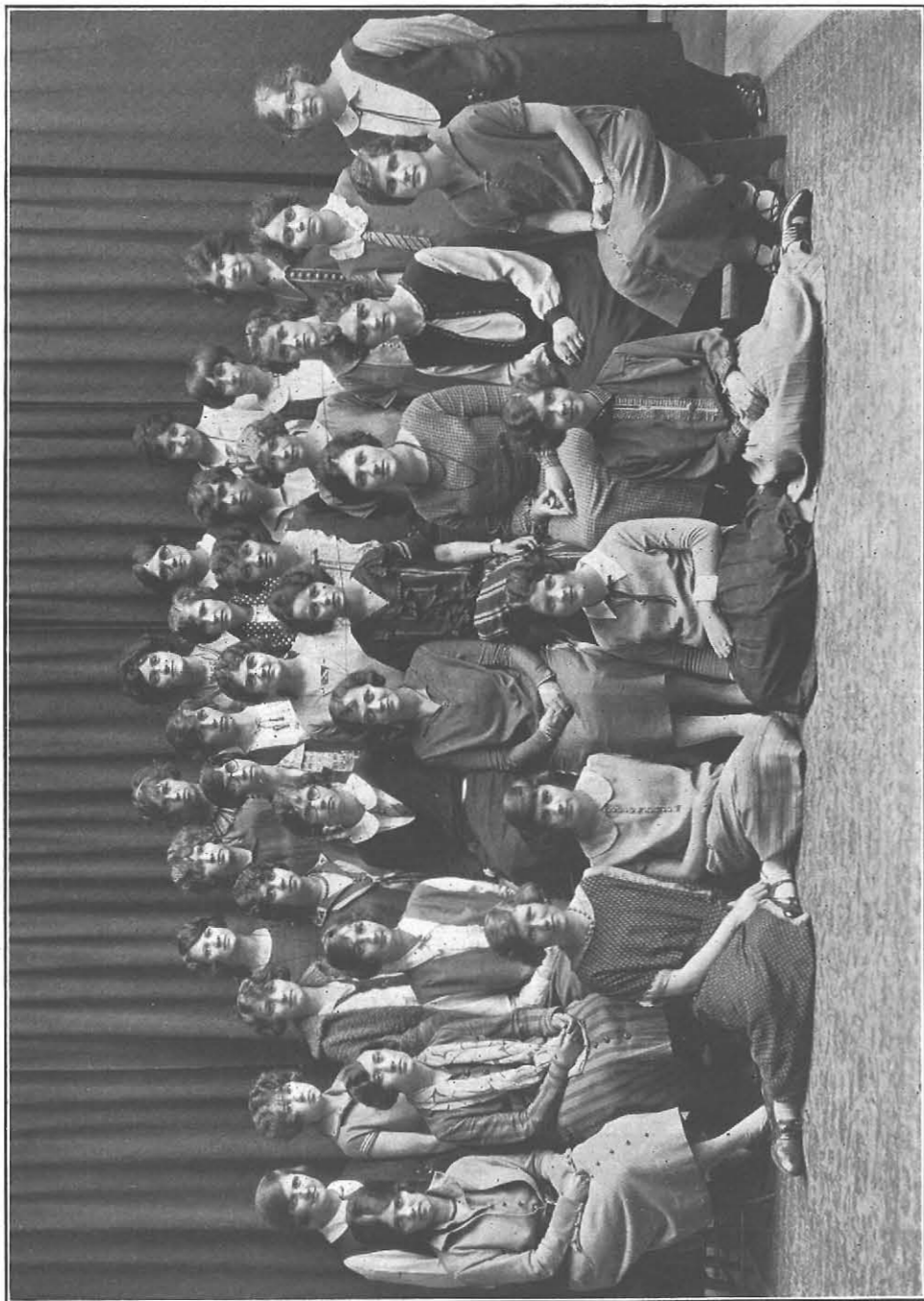
Elna Allen
Helen J. Convery
Elizabeth H. Faul

Viola Lensen
Esther Strootman
Caroline D. Weppner
Ruth Woodward

CLASS OF 1926

Harriet Cooke
Emma Coleman

Mary Galvin
Helen E. Moulton
Elsa Sanders



ARETHUSA

Arethusa Sorority

Established in the Buffalo State Normal School in 1902

OFFICERS

THELMA SHOEMAKER	President
RUTH WOODWARD	Vice President
ANN BARTH	Recording Secretary
BEULAH RIXFORD	Corresponding Secretary
ISADORE BLACKLOCK	Treasurer

FACULTY MEMBERS

Mrs. Gemmill
Miss Boorman
Miss Houston
Miss Brigham

Miss Rextrew
Miss Donaldson
Miss Sipp
Miss Walker

CLASS OF 1925

Elizabeth Paul
Anne Kirtland
Edith Kiger

Margaret Northrup
Thelma Shoemaker
Eloise Weimar

Ruth Woodward

CLASS OF 1926

Minnie Apsey
Mildred Barrows
Ann Barth
Ethel Biddlecombe
Isadore Blacklock
Harriet Cooke
Helen Haskell
Gladys Hepworth
Rosalie House
Katherine Kern
Gertrude Meyers

Mary Moran
Helen Moulton
Grace Petrie
Laura Pike
Mabel Ridder
Beulah Rixford
Gwendolyn Roberts
Gertrude Rodems
Margaret Sheehan
Juliet Smart
Kathryn Stevens

Marion Tooley

CLASS OF 1927

Eleanore Backus
Doris Cowen
Fern Erick

Edith Merrill
Martha Simmons
Gertrude Vincent

CLASS OF 1928

Mildred Keller

Myra Sumner
Martha Swanson



CLIO

Clionian Sorority

Theta Chapter established at Buffalo in 1910

COLORS: GOLD AND WHITE

OFFICERS

LOUISE H. ALLEN	<i>President</i>
LOUISE WOLF	<i>Vice President</i>
JANE HANRAHAN	<i>Treasurer</i>
MADLINE V. BLAISDELL	<i>Corresponding Secretary</i>
LOUISE ABRAMS	<i>Recording Secretary</i>
EMMA COLEMAN	<i>Senior Delegate</i>
MARY ELIZABETH HOUGHTON	<i>Junior Delegate</i>
LOUISE WOLF	<i>Grand Secretary</i>

FACULTY MEMBERS

Miss Groves	Miss Keeler	Miss Small
Miss Hanson	Miss O'Reilly	Miss Weis
	Miss Robson	

CLASS OF 1925

Elna Allen	Jeannette Draine	Ruth Knell
Louise Allen	Marion Edwards	Leonore Miller
Madeline Blaisdell	Helen Futterer	Mary Rhodes
Minnie Brink	Jane Hanrahan	Esther Strootman
Jean Carmichael	Rosetta Hebenstreit	Grace Tofrey
Viola Dohn		Caroline Weppner

CLASS OF 1926

Louise Abrams	Alice Hannel
Lydia Berlin	Catherine Miller
Emma Coleman	Capitola Parker
Mary Galvin	Mary Roskamp

CLASS OF 1927

Evelyn Bell	Mary Elizabeth Houghton	Betty Scott
Lois Bell	Hildagard Launspach	Martha Steinhauser
Ruth Berner	Ellen Neunder	Alice Urshel
May Brill	Rosamond Olief	Mildred Weil
Ella Coleman	Dorothy Potter	Alice Weinheimer
Katherine Daw	Wilma Schwalenstocker	Louise Wolf
	Adele Housle	

CLASS OF 1928

Elizabeth Curran	Margaret Katsmayer
Eleanor Holmwood	Elizabeth Sherk



SIGMA SIGMA SIGMA

Sigma Sigma Sigma Sorority

ZETA CHAPTER

COLORS: PURPLE AND WHITE

OFFICERS

MARION FISHER	<i>President</i>
ETHEL CLARK	<i>Vice President</i>
MARGARET KARNER	<i>Corresponding Secretary</i>
ANN CAMPBELL	<i>Recording Secretary</i>
EMMA SLOAN	<i>Treasurer</i>

FACULTY MEMBERS

Miss Englebreck
Miss Roehsler

Miss Bacon
Miss Howland

Mrs. Taylor

CLASS OF 1925

Dorothy Balme
Ethel Clark
Lorraine Smith
Ann Campbell
Marion Fischer
Margaret Foote
Louise Fraser

Evelyn Gram
Lcah Haberer
Margaret Karner
Charlotte Kennedy
Mildred Neff
Marion Post
Emma Sloan

Esther Terry

CLASS OF 1926

Helen Cooke
Helen Downing

Linda Hallett
Edith Kennebrook

CLASS OF 1927

Doris Backman
Juanita Dingler
Mildred Graves
Virginia Hielman
Ruth Holbrook

Lois Marseilles
Mary Mills
Marjorie Moore
Myrtle Tout
Margaret Von Volkenburg



ALPHA SIGMA TAU

Alpha Sigma Tau

SIGMA CHAPTER

Founded in Buffalo State Normal School—February, 1922

OFFICERS

MARGARET MACDONALD	<i>President</i>
DOROTHY BRUMLEY	<i>Vice President</i>
DOROTHY HEATH	<i>Recording Secretary</i>
LEAH SIMMONS	<i>Corresponding Secretary</i>
ARLETTA TRAUT	<i>Treasurer</i>
MARJORIE GUNSOLLY	<i>Chaplin</i>

FACULTY MEMBERS

Miss Luella Chapman	Miss Edna Hurd
Mrs. Blanche Wishard	Fuller

CLASS OF 1925

Patricia Bodwell	Lucille Hull
Dorothy Brumley	Margaret MacDonald
Winifred Cruickshank	Dorothy Maxwell
Marjorie Gunsolly	Ruth Macnaughton
Fredericka Fox	Catherine Smith

CLASS OF 1926

Evelyn Grampp	Dorothy Setter
Miriam Heafner	Leah Simmons
Dorothy Heath	Hazel Sobetzer
Pauline Jay	Madge Stamp
Gladys Lull	Arlotta Traut
Eugene McBain	Eunice Webster
Arlene Scully	Dorothy Young

Margene Harris

CLASS OF 1927

Catherine Becker	Doris Huggins
Mae Hammond	Mildred Spitzig
Leah Hartland	Audrey Stewart

CLASS OF 1928

Olga Craigon



KAPPA KAPPA KAPPA

Kappa Kappa Kappa Fraternity

HONORARY—ALPHA CHAPTER

COLORS: MAROON AND WHITE

OFFICERS

MR. PERKINS	<i>Honorary President</i>
MR. CLEMENT	<i>Faculty Adviser</i>
CHARLES GIBSON	<i>President</i>
ALTON HELLER	<i>Vice President</i>
ALLEN VOGT	<i>Recording Secretary</i>
FRED FINSTERBACH	<i>Corresponding Secretary</i>
CARL KUMPF	<i>Treasurer</i>
HARRY ABATE	<i>Sergeant-at-Arms</i>

HONORARY MEMBER

Mr. Voss

CLASS OF 1925

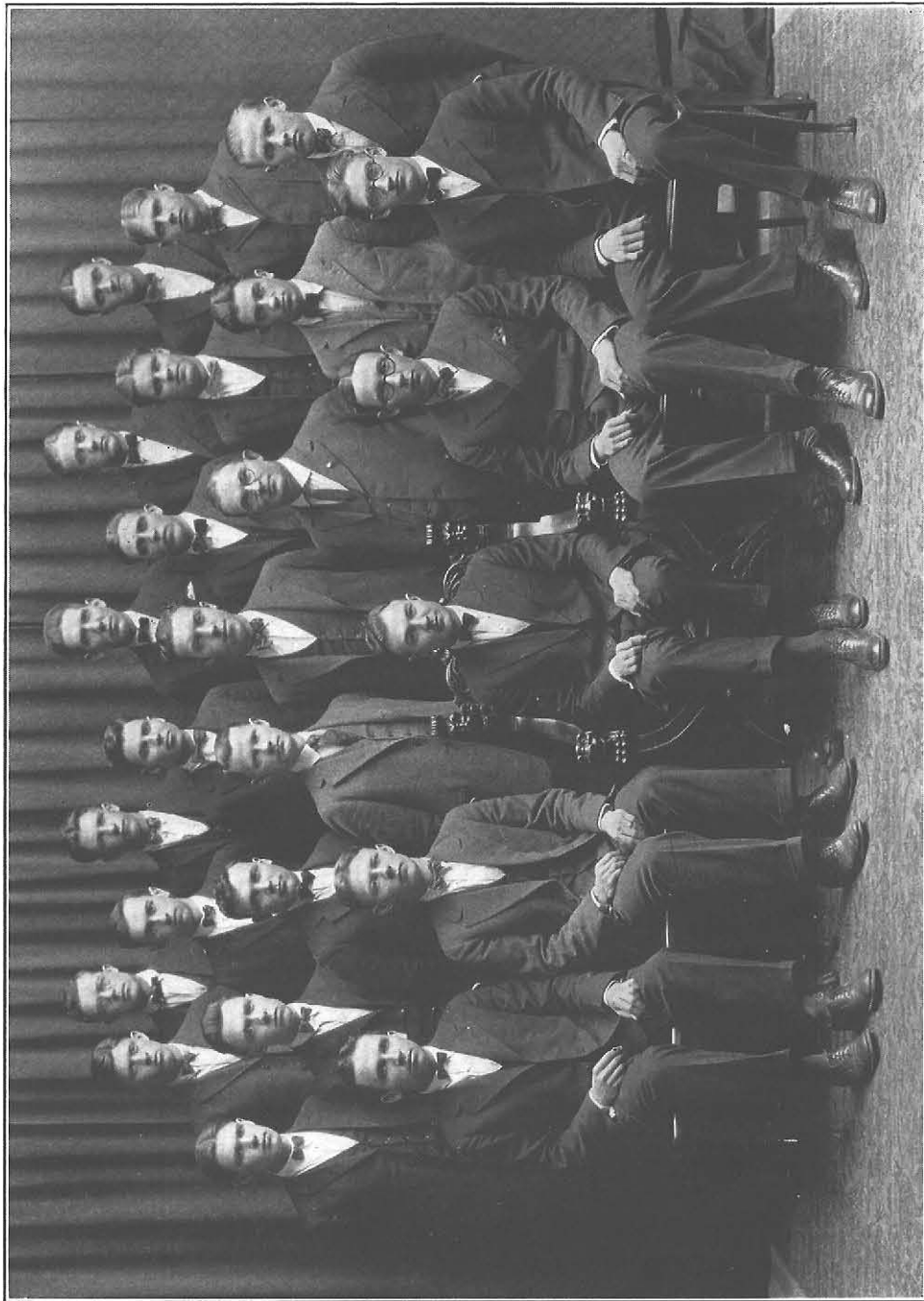
Charles N. Gibson
Alton Heller
Allen J. Vogt
Fred Finsterbach

Harry Abate
Lee D. Powell
Herbert R. Rollins
Walter M. Dow

CLASS OF 1926

Elton Shaver
Clarence J. Young
Gordon C. De Lair
William J. Lanahan
Howard S. Van Hoff
Joseph Hillery

Alfred J. Labiak
Byron W. Schottin
Harold J. Campbell
John D. Coughlin
John Walsh
Donald Stark



PSI PHI

Ψι Φι Fraternity

BETA CHAPTER

COLORS: RED, BLACK AND GOLD

OFFICERS

GEORGE W. WATSON	<i>President</i>
CLIFFORD L. GEYER	<i>Vice President</i>
NELSON J. D. MURBACH	<i>Corresponding Secretary</i>
RAYMOND M. BOA	<i>Financial Secretary</i>
ARTHUR F. AHR	<i>Chaplin</i>
ALFRED H. DAHL	<i>Sergeant-at-Arms</i>

FACULTY MEMBERS

Mr. Phillippi

Mr. Quackenbush

CLASS OF 1925

- Arthur F. Ahr
- > Raymond M. Boa
- > F. Kyrle Dec
- > Bertrand W. Furman
- > Clifford L. Geyer

- Hubert Hoderath
- Wilbur J. Lee
- > Nelson J. D. Murbach
- > Frank A. Sisler
- > George W. Watson

CLASS OF 1926

- Richard W. Baldwin
- Robert H. Black
- George E. Biddlecombe, Jr.
- Walden S. Cofran
- Alfred H. Dahl
- Ernest W. G. Kliemann

- Murray D. Lynds
- Stanley R. Patrell
- Philip W. Repert
- James D. Seatter
- Howard W. Schwenk
- Harold G. Vogt

Calendar for 1924-1925



SEPTEMBER

- September 10Opening of school.
 September 24Miss Keeler gave an interesting talk in Assembly on her trip abroad.

OCTOBER

- October 7First Student Assembly. Mr. Clement always makes it the most delightful showing of student talent and skill.
 October 12Columbus Day.
 October 23Reception for First Year Students given by Faculty.
 October 24Straw vote held in Assembly for election of Governor.

NOVEMBER

- November 7Film shown about the famous Chazy School. This film proved the forerunner of many splendid pictures made possible by the purchase of a new movie machine.
 November 21Clonian Sorority presented "The Toy Shop" in Assembly.
 November 25School of Practice gave a charming and realistic Thanksgiving Assembly.
 November 26-30Thanksgiving vacation.

DECEMBER

- December 5Film "The Mark of Zoro" shown in Assembly.
 December 16Mr. Bradley gave a beautiful, illustrated lecture on "The Madonna in Art."
 December 18Annual Christmas party held in Gym by all students of school. Carols sung by Glee Club at the Normal School and throughout the city. Mrs. Walter P. Cooke entertained the Carollers at her home the same evening.
 December 14-15 "Blessed Birthday" presented by Dramatic Club under Miss Keeler's direction.

JANUARY

- January 3Mr. Mackenzie gave a vivid and stirring lecture "Russia Before Dawn."
 January 6Dr. Auchampaugh gave an interesting lecture about Disraeli—in connection the film "Disraeli" was shown.
 January 23Miss Reed gave an instructive and interesting talk on the Eclipse.
 January 26-30Midyear examinations.

FEBRUARY

- February 1Opening of second semester.
 February 4Under the auspices of the Art Kraft Klub the versatility of the student body was revealed by a "Stunt Night Performance."
 February 20Rochester Glee Club, through the arrangement of Psi Phi Fraternity, gave an evening musical followed by dancing in the Gym.

Calendar (Continued)

- February 22 Dr. Fosdick delighted the student body by giving a talk on Washington.
 February 25 Better Speech program broadcast by WGR from Hotel Statler.
 February 27 Better Speech Week Program given in Assembly by Junior High School English class.

MARCH

- March 6 Clayton Hamilton, dramatic critic, gave an interesting talk on "The Rivals."
 March 13 Another popular Student Assembly.
 March 20 Musical Clubs broadcast a Radio Program from Station WGR.
 March 27 Y. W. C. A. had charge of Assembly.

APRIL

- April 1-12 Easter Holiday.
 April 7 Dr. Rockwell gave a vivid account of the Passion Play at Oberammergau.
 April 9-20
 April 24 Industrial Society showed a film on the National Parks.
 April 28 Long to be remembered day! Bill signed by Governor Smith permitting the State Normal School to be placed upon a four year collegiate basis.

MAY

- May 5 Musical Clubs gave an Assembly during National Music Week.
 May 12 Historical film "Signing of the Declaration of Independence."
 May 7, 8, 9 Convocation of Arethusa Sorority.
 May 14 Musical Clubs gave their annual Spring Concert in the evening.
 May 15 "A Morning in Japan," presented by Third Year Intermediate Section I.
 May 21-22 "Taming of the Shrew" presented by members of the Dramatic Club under Miss Keeler's direction.
 May 27 Fredonia Normal Glee Club visited Buffalo State Normal and gave a delightful evening musical.
 May 29-30 A number of Buffalo Normal Students visited Toronto where they were graciously entertained by the Toronto Normal School.

JUNE

- June 4 Buffalo Normal Glee Club visited the Fredonia Normal School and gave a musical program.
 June 10 Junior Tournament conducted on the campus by the Health Department.
 June 12 Senior Reception given by Dr. and Mrs. Rockwell.
 June 15-19 Examination week.
 June 20 Alumni Day. Banquet and informal dance in the Hotel Statler Ballroom.
 June 21 Baccalaureate Services.
 June 22 Class Day.
 June 23 Commencement.

PLANT OUR ADS AND GET RESULTS





GET HAPPY!



TAU PHI'S ELEVEN



JUST FOR FUN!

J
S
N
A
P
S
H



CLIONIANS



ETHEL FAXLANGER (CENTER)



MR. BRADLEY GETS FLOWERS

Buffalo State Normal School

SUMMER SESSION

JULY 6 TO AUGUST 14

FORTY COURSES OFFERED BY A
SELECTED FACULTY

Normal Students May Pursue Work on Permission
of Student Program Committee.

H. W. ROCKWELL, Principal

Every Day in the
BUFFALO EVENING NEWS

THE LARGEST CIRCULATION IN BUFFALO

THE Page of Pictures is a jealously guarded NEWS institution. It is guarded against objectionable pictures; it is guarded against "stale" news; it is guarded against faulty press work. Day in and day out, you'll find this page filled with CLEAN pictures, UP-TO-DATE pictures, and pictures that are DISTINCT and free from ink smudge. Watch it and see.

HOW'S YOUR HEALTH? Let Dr. Wm. Brady be your consulting physician. His advice is sound and makes entertaining reading. On the magazine page.

LUCY LINCOLN'S COLUMN. If you have domestic problems bring them to Lucy Lincoln and they will receive prompt and understanding consideration.

IS IT CROSS WORDS? Or is it RADIO? You'll find them both at their best in the NEWS. And all radio questions receive intelligent replies from an expert.

"KARPE'S" COLUMN is known to every sport fan in Western New York. The reason is obvious. And Karpe will answer your sport queries, too.

THE BACK-GROUND OF EVENTS is not such heavy reading as you might suppose. But it is authoritative. If you are really interested in what the world is doing, you'll like this feature of the editorial page.

THE DAILY CALENDAR on the back page, with the complete weather report, events of the day, and ship news, is invaluable to many readers.

SEND your contribution to the "Around the Town" column.

OUR CHILDREN is written by Angelo Patri, a specialist in the study of the modern child. Profit by his advice, given out of a wide experience. On the woman's page.

DR. HENRY VAN DYKE makes his point in a few sentences. Busy men and women like his "Daily Word" for its brevity and its staccato punch. On the editorial page.

ARE you following Walt's new adventures in Gasoline Alley? And have you seen Briggs' new series "Real Folks at Home?"

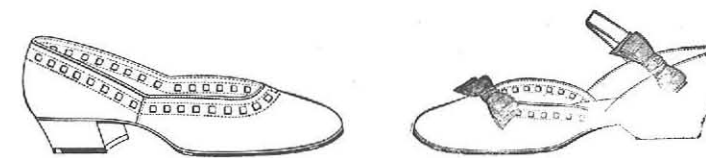
ALL these features are to be found daily in the NEWS. Your point of view and your neighbor's are given space in Everybody's Column.

*You should
 be Interested
 to Know*

That you can get Real Smart Collegiate Shoes, Newest Select Styles in various leathers, at prices that are alluring for their style and quality.

\$4.90 and \$5.90

*Graduation Shoes
 Shoes for all occasions*



INTRATER SHOE Co.

COURT and MAIN STREET

Western Saving Bank Building



BUFFALO VOLKSFREUND PRINTING CO.

"The Home of Particular Printing"


PUBLISHERS
PRINTERS
DESIGNERS
ENGRAVERS
B I N D E R S



46-48 BROADWAY
BUFFALO, N.Y.

TELEPHONES, SENECA {7370
 {7371

THIS BOOK IS ONE OF OUR PRODUCTS



Printing Plates of Quality
for
College Annuals
and all other
ILLUSTRATIONS and
ADVERTISEMENTS

BUFFALO ELECTROTYPE & ENGRAVING CO.
Hubert H. Perry, Owner
ELLCOTT AND SOUTH DIVISION STS.



HOEFLER'S
ICE CREAM

"The Cream Supreme"



GEO. F. FRANCIS

**C
O
A
L**

376 CONNECTICUT STREET



PETER PAUL & SON,
INCORPORATED

ANTHONY M. PAUL
President & General Manager



Stationers
and
Engravers

Sorority Dance Programs and
Stationery, Wedding Invitations
and Announcements. *✿* Cards
and Gifts for all occasions.



256 DELAWARE AVENUE
Above CHIPPEWA ST.

*"....a vast and prodigious cadence of waters
falls down after a most surprising and astonishing
manner, in so much that the universe does not
afford its parallel."*

—Father Hennepin, 1678.

So wrote the first white man to
see Niagara Falls in quaint ap-
preciation of its scenic grandeur.

Down through the years all man-
ner of people have voiced appre-
ciation of its tumbling torrents,
and today more than ever throngs
gather at the cataracts seeking
inspiration from the majestic
spectacle.

A century and a half ago Cha-
bert Joncaire put Niagara to
work with a tiny water wheel.

Today huge turbines develop
about a quarter of the river's
flow to lighten labor and brighten
the homes of millions for miles
around. But International Treaty
limits water diversion so that
further development depends
upon a revision of the treaty.

Power development goes hand-in-hand with scenic preservation.
Do you know that Nature is destroying the beauty of the Horseshoe?
Have you heard about the plans suggested by Government engineers
for saving the scenery, and making possible a greater production of the
cheap and constant electrical power from Niagara Falls?

There is a scale model of the river and cataracts upon which these
proposed methods of stream control are shown. It is a striking lesson
in physical geography and a topic of timely interest. You are invited
to form groups for a demonstration of this model and to visit the
world's premier power plant.

"THE GREATEST GOOD TO THE GREATEST NUMBER"

THE NIAGARA FALLS POWER CO.

Call Tupper 9600

For those private appearing cars with uniformed drivers.
Norwood service means Safety, Comfort and
Convenience at the lowest rates.

DE LUXE METERED CABS
30c for the first $\frac{1}{3}$ mile and—
for each additional third. **10c.**

CADILLAC LIMOUSINES
\$3 for the first hour and—
for each additional hour. **\$2**



NORWOOD GARAGE

Operated by Nelson P. Baker, Incorporated

\$65 A 4-Tube Radiola

Four tubes to get big distance on the loudspeaker. Dance to music a thousand miles away! A well-built receiver, improved in tone and performance. Brings in music and voice, clear and undistorted. And outdoes in performance receivers far above its price!

RADIOLA III-a including head-
phones and four WD-11 Radiotrons.

\$65 RECTIGON BATTERY CHARGER
Keep your batteries up at very small cost without taking them
out to be charged. Come in and see the RECTIGON.

Sold on Small Monthly Payments.

McCarthy Bros. & Ford

75-79 WEST MOHAWK STREET

Distributors for Radio Corporation of America

PARTS, SETS AND SERVICE

SPAULDING and SPAULDING, Inc.

ANTHRACITE AND BITUMINOUS COAL

Office 415 White Building

ROCK ASPHALT & CONSTRUCTION COMPANY, Inc.

ASPHALT PAVEMENT

Is the Nearest to Perfection of Any Form of Pavement

Its reasonable cost, long life of 25 years, and upwards, quietness, smoothness and low cost of cleaning and maintenance, make it the wisest and most economic investment for property owners in added value, elegance and comfort to their property, as well as contributing greatly to the welfare and prosperity of the community.

By all means select "ASPHALT" when your street needs paving or repaving

PASS ANY EXAMINATION BY USING
SMITH'S REGENTS REVIEW BOOKS

The Questions asked by the Regents of New York State for the past 12 to 22 years as a test for the completion of the work in **Grammar Schools, High Schools, and for Teachers' Certificates.**

The only books up-to-date, as the new questions are added after each examination.

The questions are grouped by topics making the books **Suitable for Class Use** with the **Late Examination Papers** at the end of the books.

Used for review work in nearly every school in New York State and in the best schools in every state in the Union.

47 Subjects:—Questions, each subject 40 cents. Answers, each subject 40 cents. 6 or more copies, 12½% Discount. One doz. or more copies, 25% Discount. **Send for Catalogue.**

W. HAZLETON SMITH, Dept. A

117 Seneca St., Buffalo, N. Y.

TYPEWRITERS

All Makes Sold, Rented, Repaired, Overhauled

AMERICAN WRITING MACHINE COMPANY

117 Franklin

Seneca 7199

Opportunity School

AN INDUSTRIAL
SCHOOL FOR
BOYS

COURT AND FRANKLIN STS.

LET US—

Cane Your Chairs

Weave Your Rugs

Make Your Brooms

WE WANT YOUR TRADE

We make a few bids for it in this way:

We give you high grade goods at the lowest possible prices.

Remember we never sacrifice quality to obtain the price.

In fact if there is anything in the Meat, Poultry or Fish line you want and want the best go to

GLENN W. HARRY

Phone Tupper 0639

311 Bryant Street Buffalo, N. Y.

CLASS PINS

CLASS RINGS



King & Eisele Company

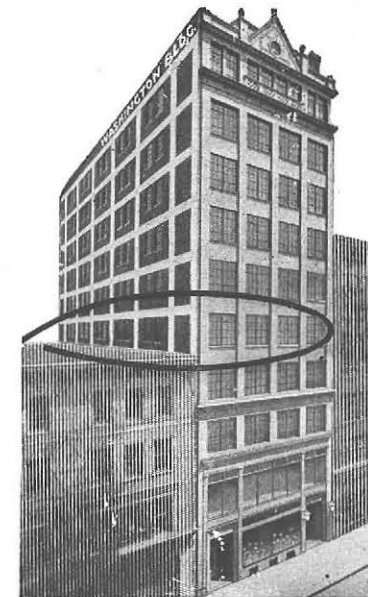
MANUFACTURING JEWELERS

210 Franklin St. cor. Huron St., Buffalo, N. Y.



FRATERNITY JEWELRY

MEDALS



Greetings!

The Holling Press, extends its best wishes to the Faculty and Students of Buffalo State Normal School, and wishes them every success in their studies.

Now located in the new Home, 5th Floor Washington Bldg., 501 Washington st.

The Holling Press
PRINTING-SERVICE
BUFFALO-N-Y-

Your Children's Appreciation of Music

They have Books to read, Pictures
to see—*what Music do they Hear?*

Great pictures, great books, great music—these three can guide your children to a life-long love for the best in art.

Just as the invention of printing has brought your children faithful reproductions of famous pictures and volumes of immortal literature, so another great invention now brings them the musical treasures of the world.

That invention is the AMPICO—a miraculous device that makes the piano in your living-room sing under the touch of the world's greatest musicians.

The AMPICO may be had in the following pianos, which have been known for generations as instruments of quality: MARSHALL and WENDELL, HAINES BROS., and the celebrated CHICKERING.

The piano which you now own will entitle you to an allowance on an AMPICO.



GOOLD BROS., Inc.

1367 - 1369 Main Street - - - UTICA

TYPEWRITERS

We Invite You to Inspect Our Line of Typewriters

We are distributors for

WOODSTOCK STANDARD

And ELECTRITE MODELS

CORONA *and* REMINGTON PORTABLES

Also All Makes

SOLD — RENTED — REPAIRED



Buffalo Typewriter Exchange, Inc.
128 FRANKLIN STREET

T. & E. Dickinson & Co.

INCORPORATED

618 - 620 MAIN STREET



**Buffalo's
Leading
Jewelers**



"Gifts for the Graduate"

Just to Read the

BUFFALO TIMES DAILY and SUNDAY

Is an Education in itself



The Best Features

The Clearest Pictures

The Latest News

BACON & VINCENT

49 EAST SWAN STREET



Headquarters for Prang's Drawing and Art Supplies, Loose Leaf
Note Books, Pads, Etc. Supplementary Review
Books in all Subjects.

We Invite Your Patronage

BACON & VINCENT

COPPINS

Himself



PAINTING AND INTERIOR
DECORATING



Office and Studio

So. Elmwood Ave., opp. Hutchinson High School

Superior Engraving Company, Inc.

25 E. Huron Street

Buffalo, N. Y.

PHOTO-ENGRAVING—ART WORK and DESIGNING

Telephones, Seneca 9304 and 9305

WM. J. ATWILL

LINOTYPE COMPOSITION

45 North Division St.

Seneca 2249

COMPLIMENTS OF



The Largest Department Store East of Main Street

ACROSS FROM THE BROADWAY MARKET

MORRIS & ALLAN, Inc.

CONTRACTORS

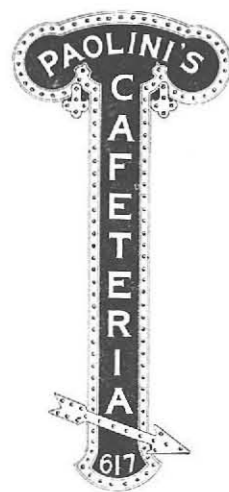
325 Jackson Bldg. Buffalo, N. Y.

Lester

GRAND PIANOS

Beautiful Design
Superb Finish
Exquisite Touch
Magnificent Tone
Marvelous Durability
Artistic Endorsement

DENTON, COTTIER
& DANIELS



FOLLOW THIS SIGN

To

Buffalo's Most Beautiful Place to Eat
The New Idea in Cafeterias

NO Trays to carry — courteous waitresses do it for you. Splendid music — Paolini's Orchestra every day. Dancing Tuesdays, Thursdays, Saturdays, during dinner hours, also Saturday from 12:30 to 2:30.

BEST OF FOODS — MODERATE PRICES

Special Parties Arranged

617 MAIN STREET

NEAR CHIPPEWA

H. D. TAYLOR CO.

WHOLESALE MERCHANTS
BUFFALO, NEW YORK

"Busy Since 1833"

Founded 1826

BEALS, McCARTHY & ROGERS

Incorporated

IRON—STEEL—HARDWARE
TOOLS AND SUPPLIES
MOTOR CAR ACCESSORIES

40 to 62 Terrace

Buffalo, N. Y.

Largest Stock in New York State

THE ROYAL CASINO

ON THE LAKE FRONT WEST AT

CRYSTAL BEACH

OPEN MAY 30th

DANCE PAVILLION AND BATH HOUSE

ROYAL-DELLWOOD ORCHESTRA

Conducted by MR. ARTHUR J. FUNK

CANDY OF QUALITY

DELICIOUS ICE CREAM

Kuyler's

Tea-rooms where dainty delicious Luncheons are served.
Our Food the Best. Come here and meet your friends.

566 MAIN STREET

1366 MAIN STREET

Light Lunches served at 350 Main Street.

AS A GUIDE TO YOUR JUDGMENT IN SELECTING YOUR
AGENCY, REMEMBER THAT THE BETTER POSITIONS
IN THE BETTER SCHOOLS ARE FILLED BY THE

Schermerhorn Teachers' Agency

Charles W. Mulford, Prop.

366 Fifth Avenue, New York City
Cleveland Office: 1836 Euclid Avenue
Pittsburgh Office: 406 Union Trust Bldg.



"A SUPERIOR AGENCY FOR SUPERIOR PEOPLE"
Since 1855

CLASS ROOM & AUDITORIUM FURNITURE

DRAFTING FURNITURE

DRAWING INSTRUMENTS

SLIDE RULES, SCALES AND SUPPLIES OF ALL KINDS



Sullivan - McKeegan Co., Inc.

937-945 ELLICOTT SQUARE

BUFFALO, N. Y.

In Business for Over Seventy Years



We offer college grade courses in Business Administration, Secretarial Science and Accountancy. Also Standard Business courses, including Shorthand, Typewriting, English, Bookkeeping, Penmanship, etc.

Bryant & Stratton College

Main Street at North

Buffalo, N. Y.

Catalog Free

WHEN YOU BUY PATRONIZE THE ADVERTISERS IN

THIS BOOK

THEY WILL APPRECIATE IT AND SO WILL WE

THANK YOU

HEINTZ BROS. Inc.

JEWELERS

86 Ellicott Street

Makers of

CLASS PINS AND RINGS

FRATERNAL PINS and JEWELS

WE ASK YOU TO PATRONIZE

OUR ADVERTISERS

THANK YOU

SERVICE —

KELLER SERVICE is the continuance of interest after the sale —of making the buyer satisfied by fair dealing plus the ability to meet his requirements promptly, accurately and satisfactorily.



KELLER OFFICE FURNITURE CO.

EVERYTHING IN OFFICE FURNITURE

123-9 Franklin Street Buffalo

Tupper 0532

GREGOR BENZ

UPHOLSTERING and REPAIRING
REFINISHING

Latest Style Covering on Hand
Cabinet Work and Caning
Box Springs and Mattresses
Furniture Made to Order

289 Connecticut St. Buffalo, N. Y.

MAX WEINGARDEN

EXCLUSIVE SMOKERS'
REQUISITES

Two Stores

296 Main St. 74 Seneca St.
Buffalo, N. Y.

COMFORT FOR WARM DAYS



Light, Cool and Neat Looking

Just the thing to wear with you new Spring clothes. CANTILEVER Shoes will harmonize with your modish apparel—and you will surely enjoy their freedom and comfort when the hot weather arrives.



Shaped like the natural foot, CANTILEVERS feel most comfortable in summer.

CANTILEVER SHOE SHOP
641 Main Street Buffalo, N. Y.

COMFORT ECONOMY

ROADABILITY

FRANKLIN

One of the big pleasures of Franklin ownership is that feeling of complete security you have when driving. To pass another car you can even turn off the crown of a slippery road, onto the soft edge, without sacrificing either speed or safety.

OSTENDORF MOTOR CAR CORPORATION

1221-1223 Main St., Buffalo

Splendid Values in Reconstructed

Franklins. Attractive Prices.

NOT FOR OURSELVES BUT
FOR YOU

The conscientious optician does not advertise his personal services alone. He asks that you consult an oculist (physician eye-specialist) when the first warning signal of eye-trouble is sounded.

Upon the oculist's prescription, the optician will be glad to fit you with such lenses as will give you the maximum of eye-comfort.

This policy combined with painstaking work and unusually modest prices has won the Prechtel Optical Company a most favorable place in Buffalo esteem.

Prechtel Optical Co.

PRESCRIPTION OPTICIANS

27 West Chippewa Street Buffalo

Next to the corner of Pearl and Chippewa

If you desire, we can furnish you a list of Buffalo Oculists.



Graduation Flowers from Palmer's Seem
Almost as Much a Part of the Exercises
as the Diplomas Themselves.

Palmer's

Stores at
258 Delaware Ave.
304 Main Street
Statler Hotel

Hurst's Private School

HURST BUILDING
HURON-FRANKLIN STREETS,
Buffalo, New York.

Specializes in Commercial, Shorthand, Typewriting, Applied English and Secretarial Work. If you are sixteen years old and have proper qualifications, you may enroll.

195 TYPEWRITERS IN DAILY USE

*Clothes for Boys
Girls like to Wear*

In the Sport Shop—wearables; very smart—and boyish—because they're really boys' clothes.

Sport sweaters; exclusive designs in pull-over and coat styles.

Golf hose from England, Scotland. Our Own Importation. Come in and see the Sport shop—soon!

The Kleinhans Co.

Buffalo's Greatest Clothier
Main, Clinton and Washington

"SAY IT WITH FLOWERS"
ANYTIME—ANYWHERE

**Grever's
Flower Shop**

479 DELAWARE AVE.
Near Virginia

DIAMONDS

WATCHES

FRISCH BROS.

Jewelers

Watch and Jewelry Repairing
Special Order Work

13 Genesee St. Buffalo, N. Y.



You'll Strike
the Athletic Equipment You Want
at *Spalding Bros.*
629 MAIN STREET BUFFALO

G. ELIAS & BRO., INC.
BUFFALO

Manufacturers of
TIMBER & LUMBER
MILLWORK—BOXES

We can supply you with all Foreign & Domestic Commercial Woods, in the rough, or manufactured into the finished product.

WE SOLICIT YOUR INQUIRIES

"Say it with Photographs"
GEO. KRAMER & SON
Photographers

STUDIO
856 MAIN STREET
BUFFALO, N. Y.



Compliments

of the

**Lumber Mutual Casualty
Insurance Company**

313 Jackson Building
Buffalo, N. Y.

Automobile — Compensation
Teams' — Public Liability

**BETTER SHOES FOR
THE WHOLE FAMILY
AT LESS MONEY**

Try our 98c. Silk Hose



690 Main St. 975 Broadway
Buffalo, N. Y.

**WILLIAM
NEUBECKER**

RETAIL LUMBER AND
MILL WORK

243 FRENCH STREET
Buffalo, N. Y.

**Country Bottled
Milk and Cream**

CERTIFIED MILK—QUEENALAC
BUTTERMILK
COTTAGE CHEESE
"The Better Milk at No Higher Price"

Queen City Dairy Company
Telephone Seneca 3400



Fountain Pens - Eversharp Pencils

Frank B. Hoole

Stationer

950 MAIN STREET

"Flowers for Everybody"

Anderson
The FLORIST

440 MAIN ST. 491 ELMWOOD

**BRAYTON'S
ANNOUNCE
A New Department!**

BRIDGE PRIZES,
SMALL GIFTS
and FAVORS
PRICED From 75c. UPWARDS

Make this *your* Gift
Headquarters

BRAYTON'S
599 MAIN STREET at Chippewa

"Fine - China - Silver - Glassware"

TUPPER 0725

ALL KINDS OF
**LAUNDRY
SERVICE**

AT

Peerless Laundry

30 GOODRICH STREET

Buffalo Silk Shop, Inc.

614-616 Main St.

JOHN A. MILLIGAN, Mgr.

Dependable silks for every oc-
casión at less than elsewhere.

Come and see, sample for com-
parison cheerfully given.

Telephones Seneca 8188 and 8189

Distributors of
Peninsular Paints and Varnishes

United Glazing Co.
Incorporated

All Kinds of **GLASS** for Building
Manufacturers of Mirrors

Mirrors Re-Silvered

255 Genesee St.
Buffalo, N. Y.

Willsey Laundry, Inc.,

THE SOFT WATER
LAUNDRY

292-300 Northampton St.
Phones Fillmore 3220, 3221, 6718

Did you ever have a real suit
made?

Don't forget, I can make you
look dressier than anyone else.

Nicholas Cecchini
TAILOR

51 Allen Street Tupper 9380

Phone, Tupper 4121

Betty's Colonial Sweets

Home Made

BUY BETTY'S AND YOU BUY
THE BEST

Delivery 300 Jersey Street

BELL MARKET

313 Connecticut St.

FRUITS and VEGETABLES

of the Finest Quality

PAUL SNYDER, Prop.

JOS. LANKES & SON

WHOLESALE MEATS
WASHINGTON MARKET

Compliments of
W. C. KLUNE

"ONLY THE BEST"

Fehle's Grocers

309 BRYANT STREET

Bloomberg's

DEPARTMENT STORE

Best Goods at Lowest Prices

Agents for Butterick Patterns

372 Connecticut Street

Open Evenings We Give Trading Stamps

FOR GOOD SHOES
AND SPECIAL FITTING SHOES

GIVE US A TRIAL

Expert Repairing. Arch Supporters.
Special Shoes Made to Order.

JOHN LAWANDUS

"THE HOME OF GOD SHOES"

Old Shoes Made Like New

1215 Michigan Ave. Buffalo, N. Y.
Between Dodge and Southampton Sts.

Crescent 1249

The Grotzka Press

Printing of Quality—With Service
2662 Main Street Buffalo, N. Y.

Donovan's Drug Store

Photographic Work

School Supplies

Soda Fountain

Postal Station

412 Connecticut Street

C. H. LORISH

129 14th Street

School Supplies

Confectionery

Ice Cream

Notions

R. L. COOLEY

355 Connecticut Street

Corner Normal Ave.

Dealer in School Supplies,

Candies and Confectionery

Lunches served to Normal

School Students.

"Say It With Flowers"

JOHN L. KRAMER

Florist

1291 Jefferson Ave. Buffalo, N. Y.

Loose-Leaf Note Books, Drafting
Instruments, Eversharp Pencils,
Fountain Pens, Diaries.

Printing and Engraving, Social
Stationery, Brief Cases
School and College Supplies

Besser's

STATIONERS

611 Main St. Just Above Chippewa

Ladies' Novelty Shoes!

\$2.90

NEWEST STYLES
PATENT, SATINS AND KID
"LOWEST PRICES ALWAYS"

Self Service Shoe Store

846 Main St. Near Virginia St.

Seneca 5654

"HORROCKS DESKS"
"GUNLOCKE CHAIRS"

Old Desks, Chairs, Tables, Etc.
Taken in Exchange
Repairing and Refinishing

**Buffalo Office Furniture
Exchange, Inc.**

Warehouse and Salesrooms

92 Pearl Street Buffalo, N. Y.

Phone Fillmore 0025

Johns Pretzel Bakery

GEORGE H. JOHNS, Prop.

Manufacturers of the
World-Famed Hand Made

LITITZ PRETZELS

1136 JEFFERSON AVE.
BUFFALO, N. Y.

The Latest Books in Our
CIRCULATING LIBRARY

ADON RICE

PHARMACIST

Cor. Porter and Normal Aves.

Rundell & Weigel

Hardware, Paints, Oils and Glass
Roofing and Sheet Metal Work
Garland Furnaces and Gas
Ranges

158-162 Chenango St., at Ferry

Cox Sons & Vining

131 - 133 EAST 23rd STREET

New York



CAPS AND GOWNS
Hoods for all Degrees

OUTFITS FOR SALE OR RENTAL — MODERATE PRICES

Tupper 5963

B. HOEFNER

POULTRY, FISH, BUTTER,
EGGS AND CHEESE

331 Connecticut St. Buffalo, N. Y.

CERTIFIED MILK is CLEAN
milk, not CLEANED milk. It is
natural milk, not processed milk; it is
free from all dangerous or injurious
germs, and is as completely germ free
as humanly possible, because from the
moment it is drawn from the cow until
it is bottled, it has been kept free from
dirt, and has been protected from bac-
terial infection.

ELMHURST SPECIAL MILK CO.
114 Chenango Street

Watches

Seneca 1888

Frank Hammond

54 and 56 Seneca Street

Diamonds

Solid Silver

Telephones

Tupper 0705

Tupper 0706

WIESE
Florist

206-307 Washington Market

Feltman & Curme

WONDERFUL SHOES

\$5 and \$6

NONE HIGHER

515 Main Street Buffalo, N. Y.

Phone, Tupper 0945

Arlington Hat Shop

J. H. Burgess, Prop.

Makers and Reblockers of all Kinds of
HATS

115 Elmwood Ave. Near Allen St.
Buffalo, N. Y.

Tupper 3845

STELLER'S

ALMOND RING BAKERY

76-80 BEST ST.
Buffalo, N. Y.

Branch Store

845 E. Delavan Ave. Fill. 3466-W

L. DeLaney Grace M. Howe

CONNECTICUT PHARMACY

DRUGS, TOILET ARTICLES,
STATIONERY
CANDY and CIGARS

364 Connecticut St. Tupper 2251

Terms if Desired Open Saturday Evenings

ZINK'S Furniture House

EVERYTHING TO FURNISH
THE HOME

344-346-348 Connecticut Street
Corner Normal Avenue

THINK OF ZINK

Telephone, Bidwell 5714

J. ELLSWORTH

Shoes All Sizes, Prices and Kinds at
the House That Serves You Right

307 W. FERRY ST.

To-Morrow

Like a happy brook that freely wends its way,
Unchecked by care, so was my yesterday.
Gay, tinkling leaves, or laughing flowers—
Loved and faded; these are childhood's hours.

To-day, like a poem or melody seems—
Sad in its retrospect; gay in its dreams.

And through these dreams, I see my great to-morrow,
Horizons gay, for youth admits no sorrows.
I see service, dull in somber dress,
Transformed to beauty, by her fairer child, success.
On my mind adventure's picture falls,
Peering through crannies in old castle walls.
Knowledge comes, of which I now have but a taste,
Through travel from Alpine heights to low Saharan wastes.
And Romance smiles down from o'er her silver, crescent moon,
"Treasures I've hidden in many a June!"

Fades, then, this triumph with the twilight rays—
Good-bye, to-day. In sweetest fragrance you must lie among my
yesterdays.

Athrilled, then, I salute to-morrow, unafraid,
For love and faith will take me through the future hope has made.

JANE KINGSLAND DINSMORE.



Faculty

Eileen Mulholland 264 Sumner Street, Buffalo, N.Y.
 J. F. Phillippi Hamburg N.Y.
 June E. Fischer 156 Sumner Pl., Bflls.
 Kathryn S. Graham 21 York St., Bflls.
 Charles C. Root, Buffalo State Normal School
 Robert Ross

Sylvester T. Tolassa - 52 Floss Ave.
 J. M. Doulis 238 Starin Ave.



Classmates

Jeanette Draine '25, Clio,
 William J. Conley. 26 Jan.
 Gerald T. Wombell, Derby N.Y. '26
 William S. Hutch
 Ernest W. Klimann
 Albert Clarence Di Cesaro '26
 Margaret A. Sheehan '26 Arthusa
 Gladys V. Newcomb '26 Arthusa
 Charles W. Gibson '25
 Etanore Backus A
 Winifred Mahoney 7.H.
 Ann L. Duffy H.A.
 Bob Black H & P
 "Libbey" Muir
 May Ducker '27
 Kappi Groll H & Z
 Margaret Glynn
 Grace Ward H & Z
 Arthur Wood

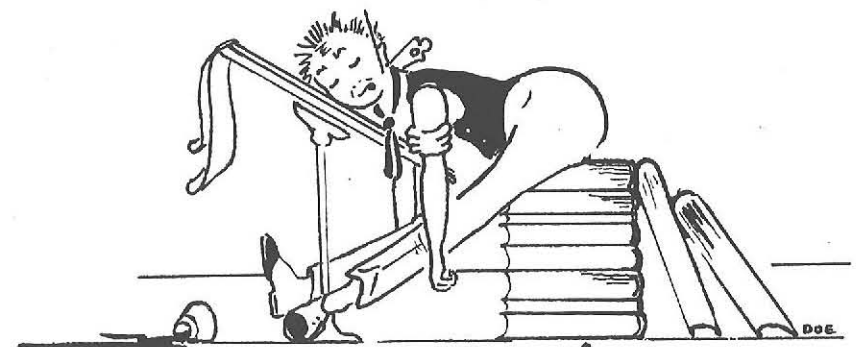


Classmates

Ruth Berner - Clis



Classmates



The End