

State University of New York College at Buffalo - Buffalo State University

## Digital Commons at Buffalo State

---

Elms, Student Yearbooks

Buffalo State Archives: History of the Institution

---

1-5-1924

### The Elms 1924

Buffalo State College

Follow this and additional works at: <https://digitalcommons.buffalostate.edu/theelms>



Part of the [History Commons](#)

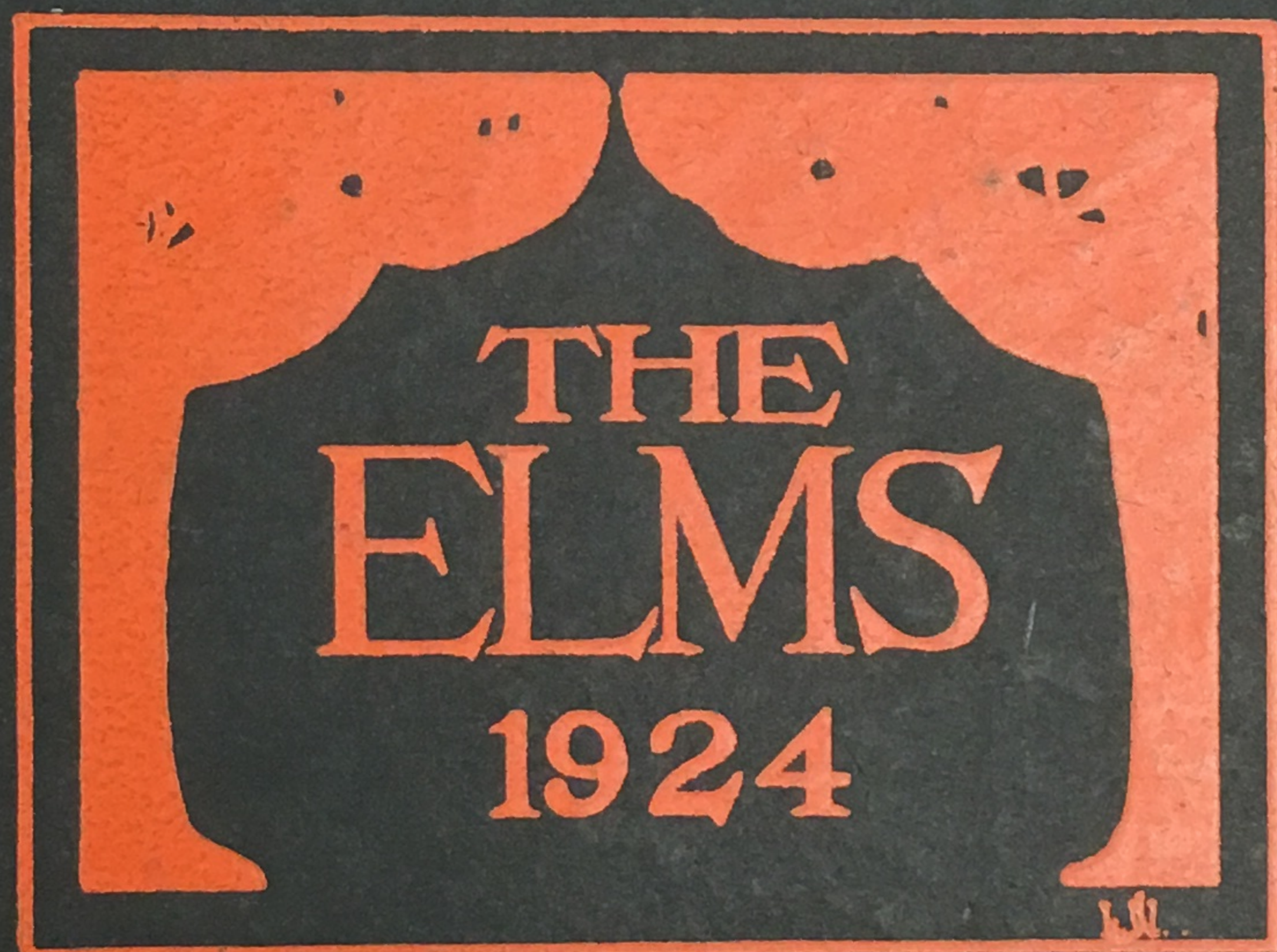
---

#### Recommended Citation

Buffalo State College, "The Elms 1924" (1924). *Elms, Student Yearbooks*. 13.  
<https://digitalcommons.buffalostate.edu/theelms/13>

This Book is brought to you for free and open access by the Buffalo State Archives: History of the Institution at Digital Commons at Buffalo State. It has been accepted for inclusion in Elms, Student Yearbooks by an authorized administrator of Digital Commons at Buffalo State. For more information, please contact [digitalcommons@buffalostate.edu](mailto:digitalcommons@buffalostate.edu).





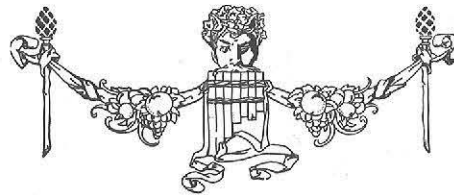


1924

Volume Thirteen

1924

# The Elms



Published by the Senior Class of the  
Buffalo State Normal School  
Buffalo, N. Y.

**Dedicated**

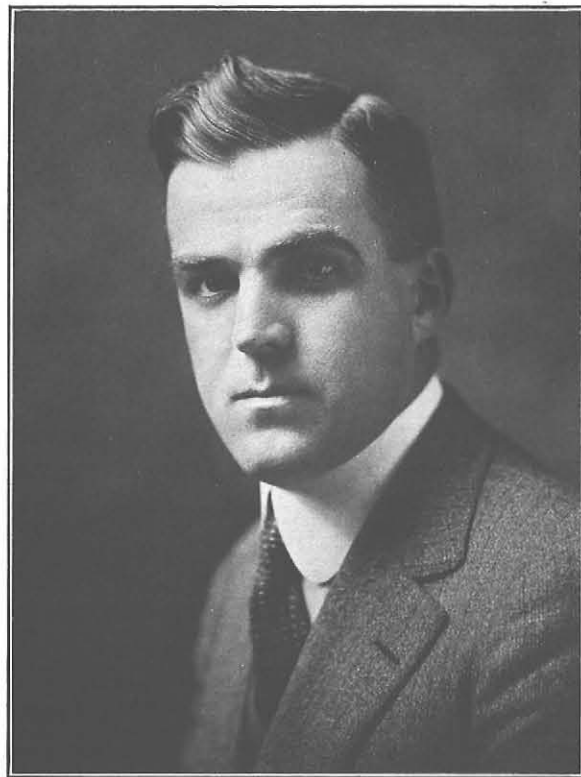
**to**

**Lewis A. Wilson**

**Director of Vocational and Extension Education  
of the State of New York**

In appreciation of his efficient administration of vocational education and of his  
indefatigable and sacrificing labor in the organization  
of the part-time schools.





LEWIS A. WILSON





HARRY WESCOTT ROCKWELL, B. A., M. A., Pd. D.  
*Principal*





IRVING C. PERKINS, B. S.  
Director of  
Vocational Industrial Department



MYRTLE VIOLA CAUDELL, B. S., M. A.  
Director of  
Vocational Homemaking Department







### Faculty of Vocational Department

WENDELL T. APPLEBEE . . . . .	<i>Machine Shop Practice and Industrial Education</i>
CLINTON B. BURKE . . . . .	<i>Woodworking</i>
GEORGE E. HUCKINS . . . . .	<i>Printing</i>
GEORGE M. QUACKENBUSH, B. S. . . . .	<i>Vocational Industrial</i>
WALTER B. WEBER . . . . .	<i>Electrical Theory and Shop Practice</i>

### Faculty of Homemaking Department

ELIZABETH L. BISHOP, B. S. . . . .	<i>Science</i>
ALICE A. BRIGHAM, B. S. . . . .	<i>Domestic Art</i>
RUBIE DONALDSON, B. S. . . . .	<i>Foods</i>
HARRIET FAIRBANKS, A. B. . . . .	<i>History</i>
ANNA M. GEMMILL, B. S., M. A. . . . .	<i>Chemistry</i>
MARGUERITE HANSON, B. S. . . . .	<i>Design</i>
MAY C. NYE, A. B., M. A. . . . .	<i>Vocational Homemaking</i>
AMY REXTREW, B. S. . . . .	<i>Homemaking Teacher Training</i>
VESTA N. SCOPY, B. S. . . . .	<i>Methods in Vocational Homemaking</i>
ELIZABETH P. TAYLOR. . . . .	<i>Vocational Dressmaking</i>
BLANCHE N. WISHARD, B. S. . . . .	<i>Foods</i>
MILDRED L. SIPP, B. S. . . . .	<i>Leave of Absence</i>
HELEN C. SMITH . . . . .	<i>Leave of Absence</i>
PHILIP AUCHAMPAUGH, B. A., M. A.. . . .	<i>Leave of Absence</i>







## Faculty of General Normal Department

GERTRUDE M. BACON, B. S.	Superintendent of Practice Teaching
FLORENCE G. BOORMAN	Kindergarten
CHARLES B. BRADLEY	Head of Art Department
LOUISE M. CASSETY	Head of Kindergarten-Primary Department
LUELLA CHAPMAN	Penmanship
SUSAN F. CHASE, B. L., M. A., Pd. D.	Psychology and Mental Testing
STEPHEN C. CLEMENT, B. A.	Head of Department of Social Sciences
MARY CONKLIN, B. A., M. A.	Health Education
HELEN G. ENGLEBRECK, B. A.	History and Registrar
HAZEL HARRIS, B. S., M. A.	English
RUTH E. HOUSTON, B. A.	Head of Health Education Department
EDNA N. HURD	Music
JANE M. KEELER	English and Dramatics
IDA L. KEMPKE, Pd. B., B. A., M. A.	Head of English Department
M. LOUISE MCMAHON	Music
J. F. PHILLIPPI, B. A., M. A.	Head of Mathematics Department
CATHERINE E. REED, A. B.	Elementary Science and Nature Study
LAURA L. REMER, Ph. B., M. A.	Kindergarten-Primary Department
JENNIE ROBSON, Pd. B.	Arithmetic
CHARLES C. ROOT, B. Pd., M. Pd., B. A., M. A.	Head of Education Department
WINIFRED E. SALOM	Health Education
RUTH E. SPEIR	Music
AMELIA BROWNE SPRAGUE	Drawing and Design
GRACE VIELE, B. L.	Librarian
LILLIAN WALKER, B. S.	Geography







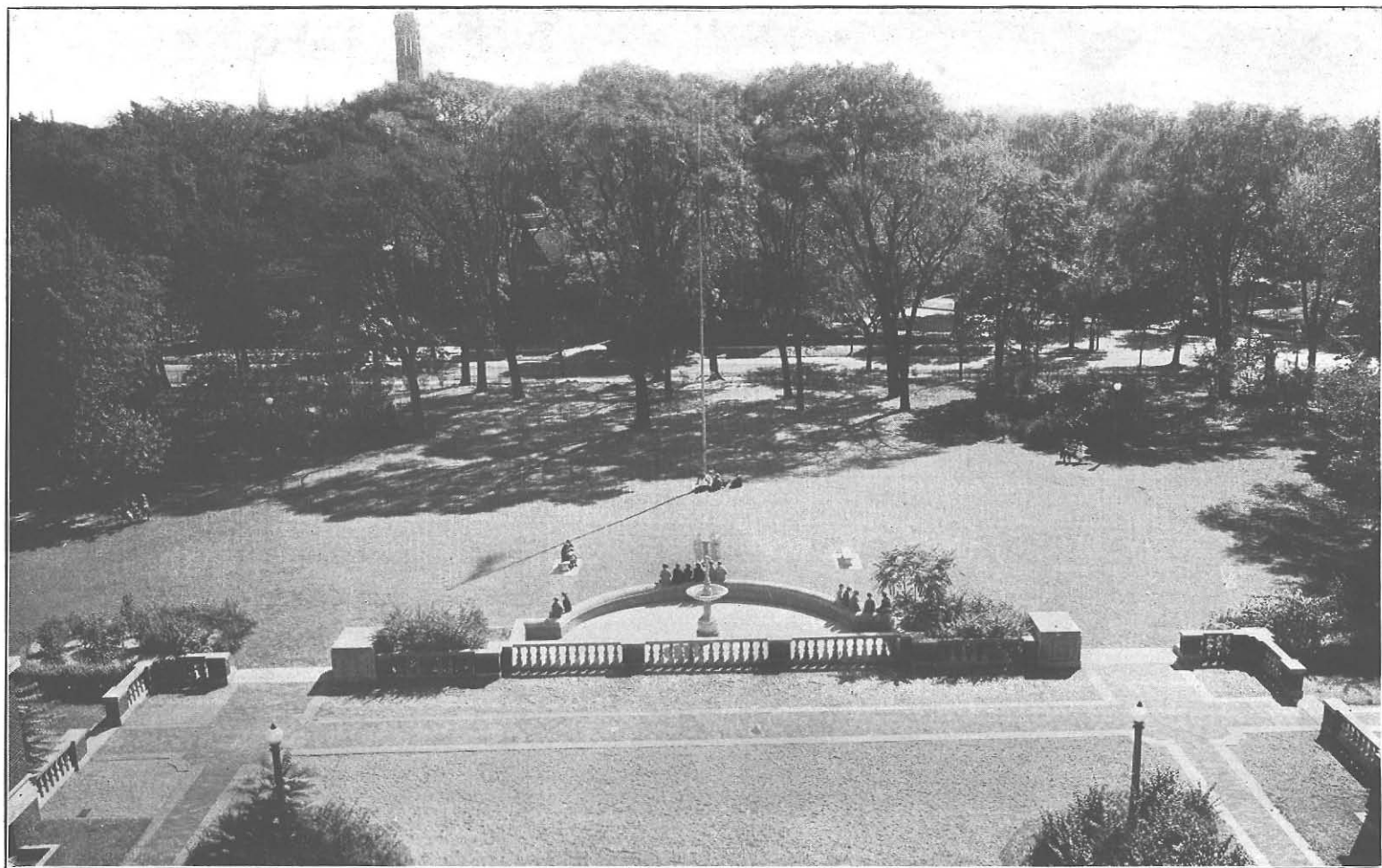
### Critic Teachers Normal School of Practice

MINNIE GROVES . . . . .	Critic Teacher, Ninth Grade
MARY H. FOWLER . . . . .	" " Eighth Grade
ELIZABETH B. SMALL . . . . .	" " Seventh Grade
HELEN WEIS . . . . .	" " Sixth Grade
STELLA O'REILLY . . . . .	" " Fifth Grade
CARRIE BENSON, Assistant Principal . . . . .	" " Fourth Grade
ELLA M. SMITH . . . . .	" " Third Grade
THERESA A. ROEHSLER . . . . .	" " Second Grade
ERNINA S. SMITH . . . . .	" " First Grade

### Practice School at Public School No. 38

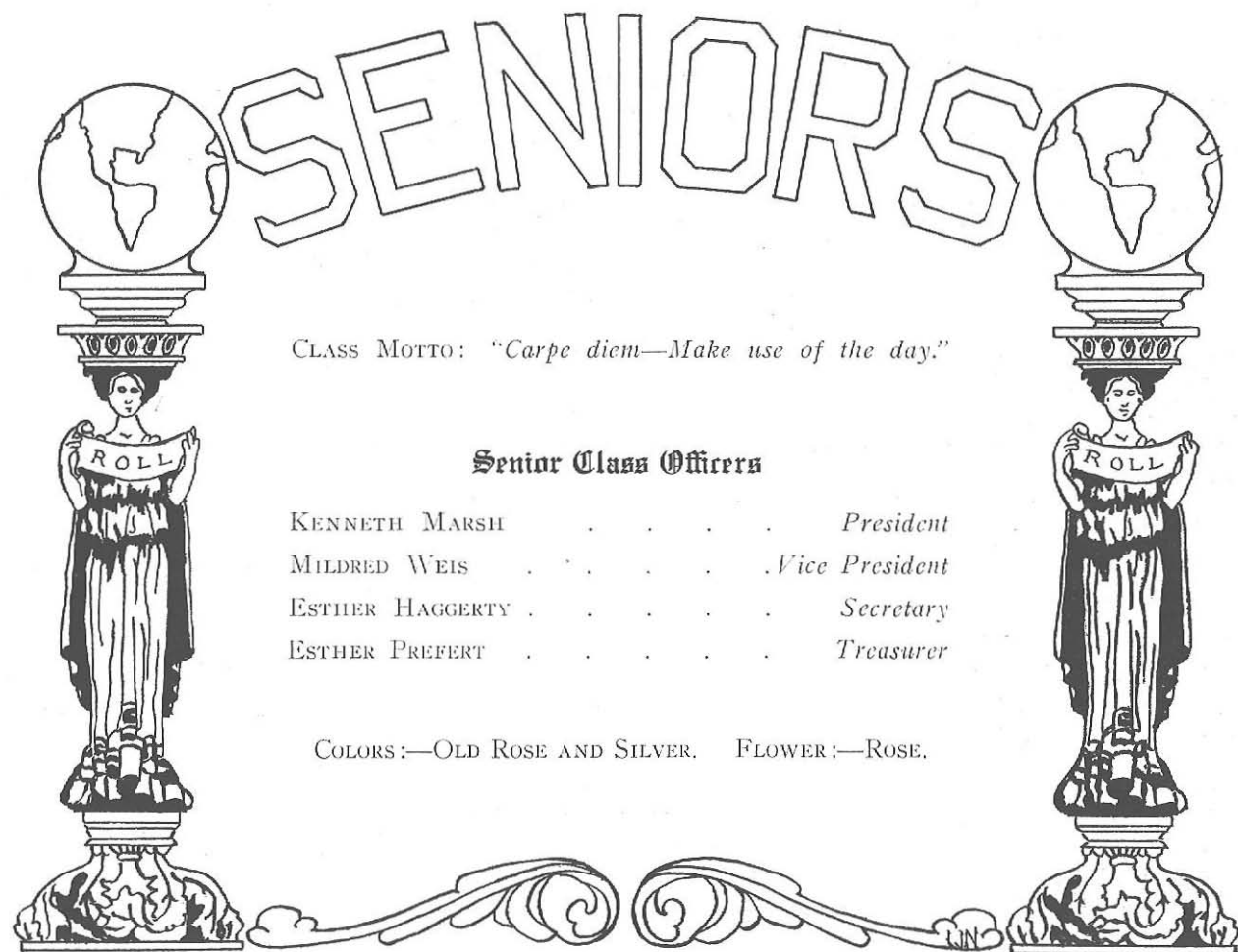
MAY CHURCHILL . . . . .	Acting Principal
M. JOSEPHINE DURNEY . . . . .	Critic Teacher, Eighth Grade
EDNA R. GARDNER . . . . .	" " Seventh Grade
FANNY A. GARVIN . . . . .	" " Sixth Grade
CHARLOTTE M. MOORE . . . . .	" " Sixth Grade
LINA GIELOW . . . . .	" " Fifth Grade
LENA L. DENECKE . . . . .	" " Fourth Grade
MARION L. WAKEMAN . . . . .	" " Third Grade
JENNIE MOSS . . . . .	" " Third Grade
MINNIE B. LAIRD . . . . .	" " Second Grade
JANE L. ELLIS . . . . .	" " Second Grade
ALICE MCKAY . . . . .	" " First Grade
FRANCES M. RUDELL . . . . .	" " First Grade
CLARA A. KREINHEDER . . . . .	" " Kindergarten





THE CAMPUS FROM THE TOWER





# SENIORS

CLASS MOTTO: "*Carpe diem—Make use of the day.*"

## Senior Class Officers

KENNETH MARSH	. . . . .	<i>President</i>
MILDRED WEIS	. . . . .	<i>Vice President</i>
ESTHER HAGGERTY	. . . . .	<i>Secretary</i>
ESTHER PREFERT	. . . . .	<i>Treasurer</i>

COLORS:—OLD ROSE AND SILVER. FLOWER:—ROSE.





ADOLPHSON, GERTRUDE .....Buffalo, N. Y.

*Homemaking*

H. A. Club—Vice President, '23.  
Junior Class President, '23.  
Senior Class Picture Committee.  
"The last time we met was in utter  
despair,  
Because she had nothing whatever to  
wear."

ARCHER, JOSEPH .....Buffalo, N. Y.

*One Year Scholarship*

Glee Club.  
Men's Club.  
Athletic Association.  
Springville College, Mass., '17.  
"Takes school work seriously."

BACKMAN MARION L. ....Buffalo, N. Y.

*Homemaking*

Sigma Sigma Sigma.  
President—'22, '24.  
Recording Secretary—'21  
H. A. Club—President '24.  
Faculty Student Council, '24.  
Phi Upsilon Omicron.  
Elms Board—Business Manager.  
Dramatic Club — "Midsummer Night's  
Dream", "Blessed Birthday", "Twelfth  
Night", "Cradle Song".  
"The play's the thing."

BAKER, HENRY L. ....Rochester, N. Y.

*One Year Scholarship*

Glee Club.  
Men's Club.  
Athletic Association.  
Mechanics' Institute, '17, '18.  
"Puddle Jumper expert."

BALDRIDGE, MARY .....Buffalo, N. Y.

*General Normal*

"Self-reverence, self-knowledge, self-  
control; these three lead life to sovereign  
power."

BAXTER, GEORGE B. ....Waverley, N. Y.

*One Year Scholarship*

Glee Club.  
Kappa Kappa Kappa.  
Men's Club.  
Faculty Student Council.  
Athletic Association.  
"The Warbler."





BEDASKA, FRANK J. ....North Evans, N. Y.

*Two Year General Industrial*

Psi Phi.

Men's Club.

"One wise crack deserves another."

BROWN, ELEANOR .....Springville, N. Y.

*Homemaking*

Clionian—Vice President.

H. A. Club.

"On one she smiled, and he was blest."

DAVISON, ELIZABETH .....Buffalo, N. Y.

*Homemaking*

H. A. Club.

Senior Class Cap and Gown Committee.

"Life is a jest and all things show it,  
I thought so once, but now I know it."

ENDRES, ALBERT .....Buffalo, N. Y.

*Vocational Extension*

Teacher of Tire Vulcanizing—Elm Vocational School.

"Believe in life, it teaches better than orators and books."

ERMOLD, FRED .....Chester, N. Y.

*One Year Scholarship*

Glee Club.

Men's Club.

"The boy from Cooper Union."

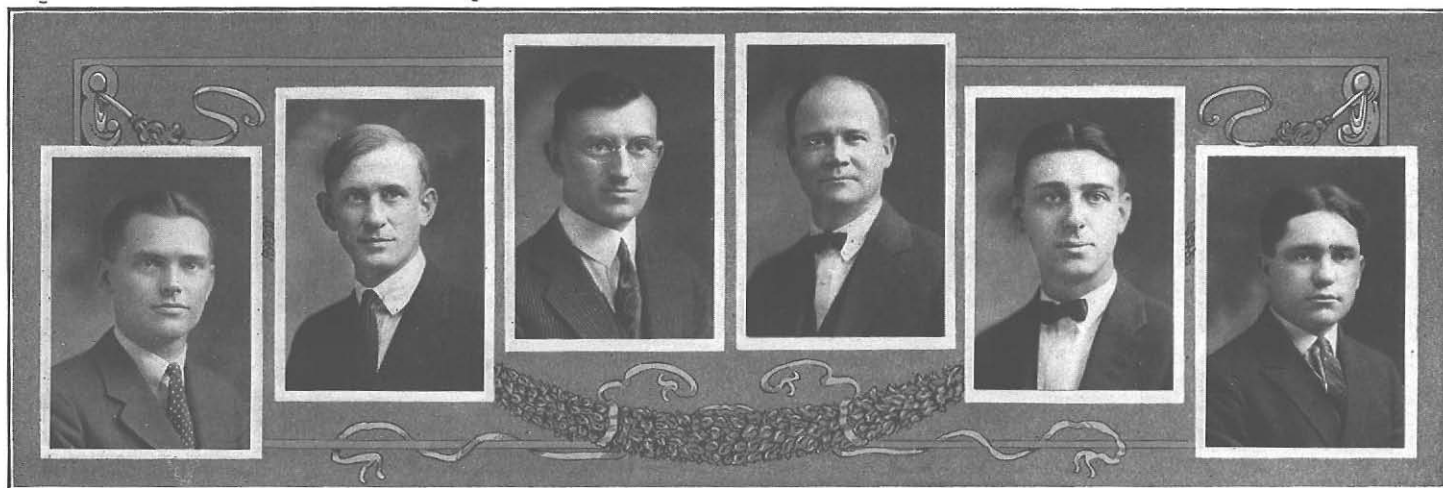
ESCHNER, HERMAN P. ....Buffalo, N. Y.

*Vocational Extension*

Teacher of Manual Training—Elm Vocational School.

"Many things...become our own through moderation and wise self-restraint."





EVERILL, GEORGE J. .... Waterloo, N. Y.

*One Year Scholarship*

Psi Phi.  
Men's Club.  
Athletic Association.  
"Our shiek,—loves them all."

EYDT, FREDERICK H. .... Buffalo, N. Y.

*One Year Scholarship*

Psi Phi.  
Men's Club.  
Athletic Association.  
"Heading West."

FAXLANGER, FRANK .... Buffalo, N. Y.

*One Year Scholarship*

Elms Board.  
Men's Club.  
Athletic Association.  
Glee Club.  
"Our Parliamentarian."

FEE, EDWARD J. .... Buffalo, N. Y.

*Vocational Extension*

Teacher of Press Work—Elm Vocational School.  
"To do nothing by halves is the way of noble spirits."

FINCH, NELSON .... Buffalo, N. Y.

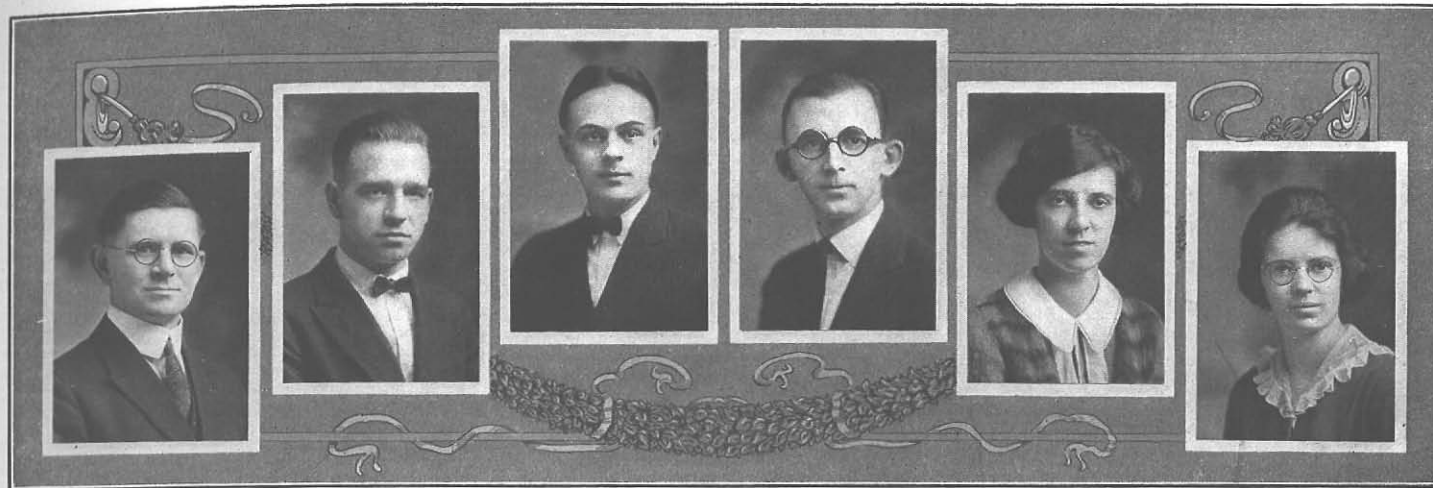
*Two Year General Industrial*

Kappa Kappa Kappa.  
Record Staff.  
Dramatic Club.  
Glee Club.  
Men's Club.  
"Congressional Record—Golden Age."

FINNEGAN, FRANK V. .... Buffalo, N. Y.

*Two Year General Industrial*

Glee Club.  
Men's Club.  
Athletic Association.  
Section Captain.  
"Just wash."



GERBRACHT, KARL H. ....Buffalo, N. Y.

*One Year Scholarship*

Men's Club  
Dramatic Club—"Blessed Birthday".  
Elms Board.  
Athletic Association.  
Senior Class Invitation Committee.  
"Six words have a claim on me each day,  
I ought, I must, I can, I will, I dare,  
I may."

GORDON, WILLIAM .....Bridgeport, Conn.

*One Year Scholarship*

Psi Phi.  
Glee Club.  
Men's Club.  
Athletic Association.  
"A little Scotch, please."

GRISLEY, DANIEL W. ....Buffalo, N. Y.

*Two Year General Industrial*

Kappa Kappa Kappa—Vice President.  
Varsity Basketball—'22, '24.  
Junior Class—Vice President.  
Men's Club.  
Athletic Association—Secretary.  
"That innocent baby look."

GUILFOYLE, HENRY L. ....Rochester, N. Y.

*One Year Scholarship*

Men's Club.  
Athletic Association.  
Mechanics Institute—'21, '23.  
"Mathematical wizard."

HAGERTY, ESTHER ....Niagara Falls, N. Y.

*Homemaking*

Clionian—Treasurer '22.  
H. A. Club—Treasurer '21.  
Senior Class Secretary.  
Elms Board.  
"If you want work well done select a  
busy man—the other kind has no time."

HALLETT, ANNE E. ....Buffalo, N. Y.

*Homemaking*

H. A. Club.  
Bulletin Board Committee, '24.  
"For if she will, she will;  
You may depend on't;  
And if he won't, she won't;  
So there's an end on't."





HART, LEON G. ....Rochester, N. Y.

*One Year Scholarship*

Men's Club.  
Athletic Association.  
"Thinks a lot, says little."

HAYES, RAYMOND W... ..Elmira, N. Y.

*One Year Scholarship*

Psi Phi.  
Glee Club.  
Athletic Association.  
Orchestra.  
Men's Club.  
"The class dandy."

HEISER, ALICE E. ....Buffalo, N. Y.

*Homemaking*

Elms Board—Literary Editor.  
Art. Kraft Klub—Secretary, '21.  
Glee Club—'20.  
Faculty Student Council—'23.  
Dramatic Club—"Blessed Birthday."  
Section Captain, '24.  
Y. W. C. A.  
H. A. Club.  
"Stands tip toe on the misty mountain tops."

HELLER, LOUIS ....Schenectady, N. Y.

*Two Year General Industrial*

Elms Board—Art Editor.  
Record Staff—Art Editor.  
Men's Club.  
Edison Drafting School, '18, '22.  
"That chalk talker."

HEPP, CLARENCE W. ....Buffalo, N. Y.

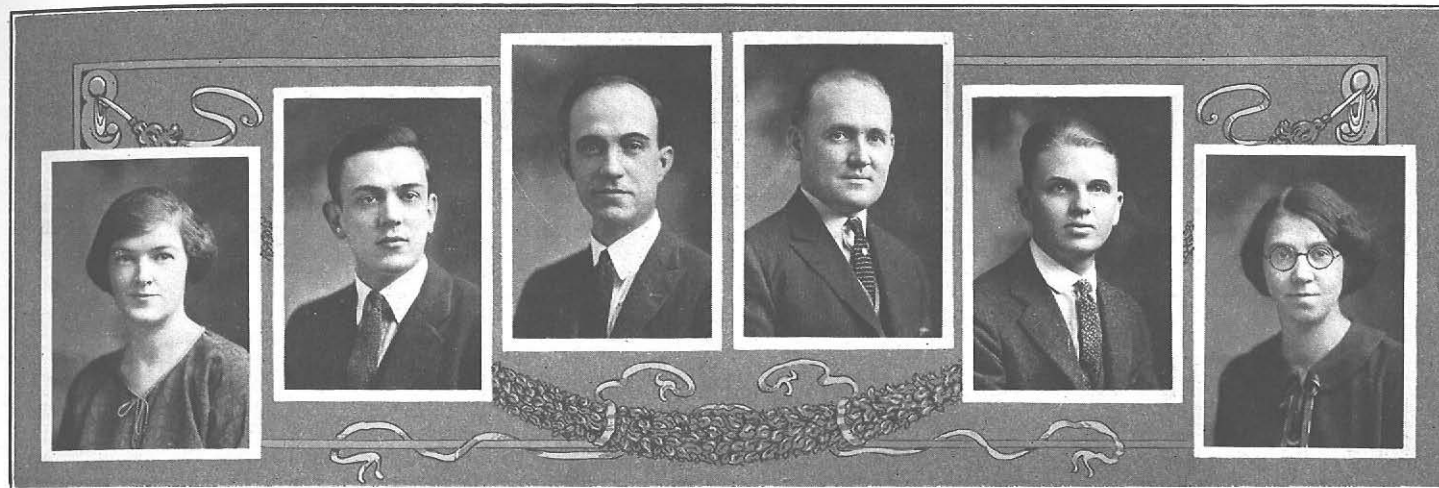
*Two Year General Industrial*

Kappa Kappa Kappa.  
Men's Club.  
Athletic Association.  
Senior Dance Committee.  
"Ha, ha, see, I laugh! I'm not mad."

HOGAN, CLARA ....Buffalo, N. Y.

*General Normal*

Sigma Sigma Sigma.  
Dramatic Club—"Blessed Birthday,"  
Elms Board—School News Editor.  
"A thing of beauty is a joy forever."



HOUSE, EVELYN L. ....Buffalo, N. Y.

*Homemaking*

H. A. Club—Secretary, '20.  
Elms Board.  
Phi Upsilon Omicron.  
"Characterlike embroidery is made stitch  
by stitch."

HUBACHEK, CARL H. ....Rochester, N. Y.

*One Year Scholarship*

Glee Club.  
Athletic Association.  
Men's Club.  
Mechanics Institute, '10, '14.  
"Quiet and ambitious."

HULL, BENNETT R. ....La Salle, N. Y.

*One Year Scholarship*

Athletic Association.  
St. Louis Technical School.  
Scranton I. C. S.  
"The village cut-up."

HUMMELL, GEORGE C. ....Buffalo, N. Y.

*Vocational Extension*

Teacher of Printing—Elm Vocational  
School.  
"Simplicity is always right."

HUMMELL, RALPH P. ...North Evans, N. Y.

*Two Year General Industrial*

Kappa Kappa Kappa—Corresponding  
Secretary.  
Glee Club.  
Orchestra.  
Athletic Association.  
Men's Club.  
"Good looking."

JOHNSON, CATHERINE .....Buffalo, N. Y.

*Homemaking*

H. A. Club.  
"Happy am I, from care I'm free  
Why aren't they all contented like me?"





JONES, ROBERT A. .... Utica, N. Y.

*One Year Scholarship*

Glee Club.  
Athletic Association.  
Men's Club  
Sth. Kensington, Eng.—Extension.  
"Our minor canon."

KEMP, OSWALD M. .... Endicott, N. Y.

*Two Year General Industrial*

Kappa Kappa Kappa.  
Men's Club  
Oswego State Normal—'21, '22.  
"No rubber heels for me."

KOLBE, MARION .... Buffalo, N. Y.

*Homemaking*

H. A. Club.  
Y. W. C. A.  
"What with laughing and dancing, days  
never seem long."

KLAUMINZER, FRED A. .. Schenectady, N. Y.

*One Year Scholarship*

Psi Phi.  
Dramatic Club.  
Elms Board.  
Men's Club  
General Electric Extension—'22.  
I. C. S.—'18.  
Union College Extension—'21.  
"As solemn as a judge."

LARE, HERMAN W. .... Oneonta, N. Y.

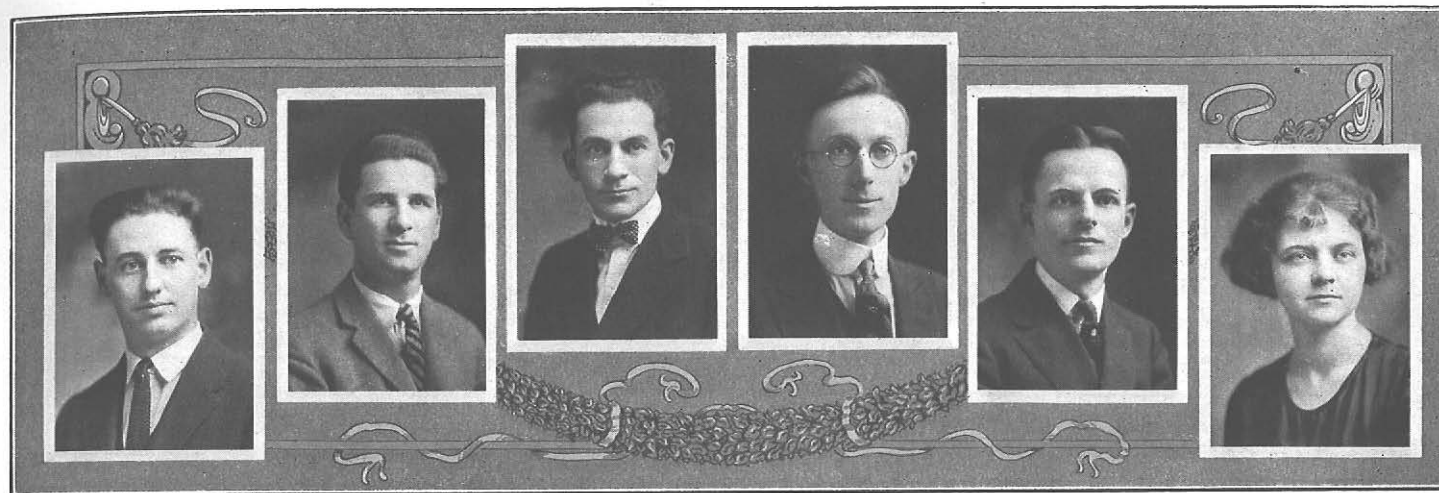
*Two Year General Industrial*

Psi Phi.  
Dramatic Club.  
Athletic Association.  
Men's Club  
"Fat Men's Race Candidate."

MARSEILLES, JEAN .... Buffalo, N. Y.

*Homemaking*

Sigma Sigma Sigma—Recording Secre-  
tary, '21.  
H. A. Club.  
"Never trouble trouble, till trouble trou-  
bles you."



MARSH, KENNETH B. ....Jamestown, N. Y.

*One Year Scholarship*

Senior Class President.  
Faculty Student Council.  
Section Captain.  
Psi Phi.  
Men's Club  
"Each man shall have the post that fits  
his powers."

McKENZIE, JAMES E. ....Buffalo, N. Y.

*One Year Scholarship*

Glee Club.  
Men's Club  
Athletic Association.  
"The Bookworm."

McMAHON, JOHN J., JR. ....Buffalo, N. Y.

*Two Year General Industrial*

Kappa Kappa Kappa.  
Basketball Team—'22, '24.  
Captain—'23, '24.  
Senior Ring and Pin Committee  
Athletic Association.  
Men's Club  
Canisius College, '20, '22.  
"Benny, the Irish Jew."

MILLER, ARTHUR G. L. ....Buffalo, N. Y.

*One Year Scholarship*

Glee Club.  
Men's Club  
Athletic Association.  
"The 'prof' in the class."

MITCHELL, HUGH M. ...Washington, D. C.

*One Year Scholarship*

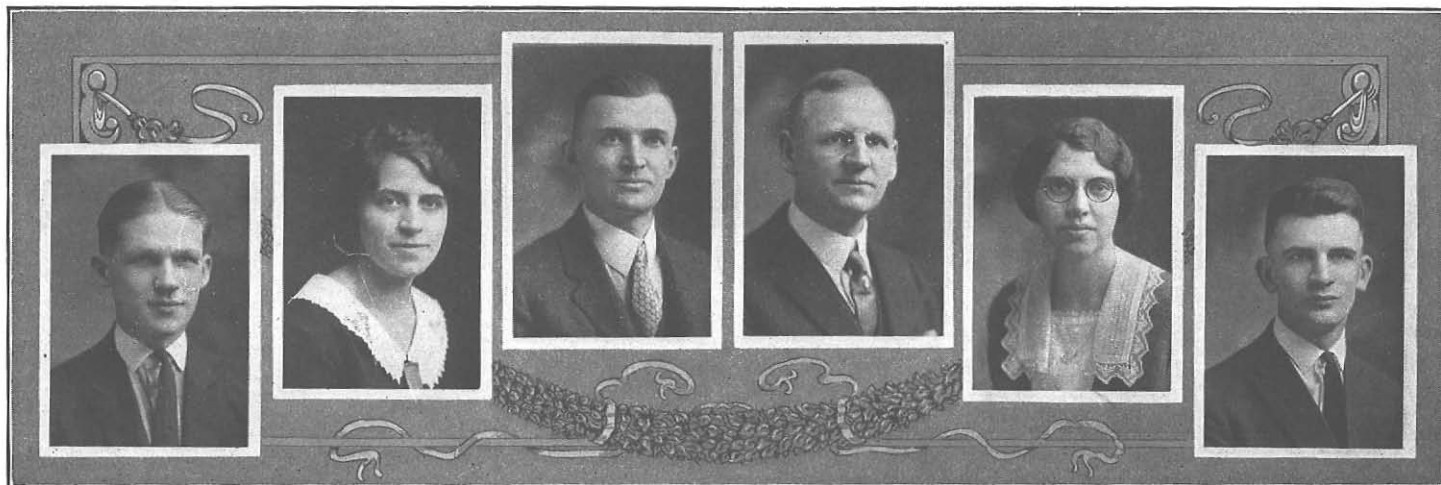
Kappa Kappa Kappa.  
Glee Club.  
Men's Club  
George Washington University, '16, '17.  
Columbia University, '18, '19.  
"The wonder man."

MORROW, ETHEL .....Bradford, Pa.

*Grammar*

Syracuse University, '19, '21.  
Summer Session, '21, '22.  
"Observe the opportunity."  
First student to finish the new three-  
year course.





NAUERT, LEWIS J. ....Buffalo, N. Y.

*Two Year General Industrial*

Kappa Kappa Kappa—President.  
Glee Club.  
Cheer Leader.  
Elms Board.  
Section Captain.  
Athletic Association.  
Men's Club.  
Senior Song and Motto Committee.  
"The advertisement for 'Nervine'."

PEASE, ETHEL G. ....Buffalo, N. Y.

*General Normal*

Y. W. C. A.  
Pennsylvania State College.  
University of Buffalo.  
"Success of to-day depends upon preparation of yesterday."

PIERCE, CHARLES A. ....Buffalo, N. Y.

*Vocational Extension*

Teacher of Starting, Lighting and Ignition—Elm Vocational School.  
"The argument of the strongest is always the best."

POPP, PAUL R. ....Buffalo, N. Y.

*One Year Scholarship*

Glee Club.  
Concordia Teacher's College—River Forest, Ill.  
"And we heard the organ."

PREFERT, ESTHER C. ....Buffalo, N. Y.

*Homemaking*

Senior Class Treasurer.  
Sophomore Class President.  
Phi Upsilon Omicron.  
H. A. Club  
Y. W. C. A.—'20, '21.  
"Thy modesty's a candle to thy merit."

QUIRK, KEATING F. ....Buffalo, N. Y.

*Two Year General Industrial*

Men's Club.  
"Slow motion."



RANDALL, HELEN .....Glassboro, N. J.

*Homemaking*

Clionian—'21, '24.  
H. A. Club—Secretary, '21.  
"Is't not your trick?"

RATHBUN, MARIAM .....Buffalo, N. Y.

*Homemaking*

Arethusa.  
Phi Upsilon Omicron—Librarian, '24.  
"Happiness is a wayside flower that  
grows along the highway of thoughtfulness."

REINHARDT, ALICE L. ....Buffalo, N. Y.

*General Normal*

Elms Board.  
University of Buffalo—'21, '22  
"It's the smile that wins."

RILEY, HELEN M. .... Lockport, N. Y.

*General Normal*

Glee Club—'22, '23.  
"He who wills—can."

SAINE, FLOYD D. ....Dunkirk, N. Y.

*Two Year General Industrial*

Men's Club.  
Athletic Association.  
Senior Invitation Committee.  
Kent State Teacher's College—'21, '22.  
"Advertising manager for Ohio State."

SALISBURY, HARLEY E. ..Binghamton, N. Y.

*Two Year General Industrial*

Psi Phi—President.  
Glee Club.  
Men's Club.  
Senior Picture Committee.  
Elms Board.  
"Down Home."





SCHNEPPLE, ELIZABETH P. ...Buffalo, N. Y.

*Homemaking*

Phi Upsilon Omicron.  
H. A. Club.  
"Oh, sleep it is a gentle thing!—But what about the alarm clock?"

SHEAR, HERBERT L. ....Derby, N. Y.

*Two Year General Industrial*

Psi Phi.  
Men's Club  
Athletic Association.  
Orchestra.  
"Henry Ford's master draftsman."

SHOEMAKER, FRED Z. ....Dunkirk, N. Y.

*One Year Scholarship*

Men's Club  
Athletic Association.  
"Daddy of them all"

SKILLEN, DORIS .....Akron, N. Y.

*Homemaking*

H. A. Club.  
"You treat me just like a dog."

SMITH, DONALD E. ...East Chatham, N. Y.

*Two Year General Industrial*

Athletic Association—President.  
Men's Club—Treasurer.  
Section Captain  
Senior Class Ways and Means Committee.  
"The man who put East Chatham on the map."

SMITH, FRANKLIN L. ....Buffalo, N. Y.

*One Year Scholarship*

Men's Club  
"The silent knight."

## Class Officers

### CLASS OF 1925

MARY GORMAN . . . . .	<i>President</i>
WALTER SMITH . . . . .	<i>Vice President</i>
WILLIAM VEIGEL . . . . .	<i>Secretary</i>
THELMA SHOEMAKER . . . . .	<i>Treasurer</i>

### CLASS OF 1926

JOHN COUGHLIN . . . . .	<i>President</i>
ALFRED C. DAHL . . . . .	<i>Vice President</i>
MARION BIGGERSTAFF . . . . .	<i>Secretary</i>
EVELYN WARD . . . . .	<i>Treasurer</i>

---

## In Memoriam

Dr. James M. Cassedy

Died September 26, 1923

Principal of the Normal School 1886-1909

Evelyn Gifford

Class of 1925

February 20, 1905

April 23, 1924

---





CLASS OF 1925



CLASS OF 1926





CLASS OF 1927







THE ELMS BOARD

Everill  
Klauminzer

House

Nauert  
Backman

Faxlanger  
Weis

Heiser  
Hagerty

Gerbracht  
Heller

## The Elms Board

MILDRED B. WEIS . . . . . *Editor-in-Chief*

MISS KEMPKE . . . . . *Faculty Adviser*

### Board of Editors

MARION L. BACKMAN . . . . . *Business Manager*

ALICE E. HEISER . . . . . *Literary Editor*

LOUIS HELLER . . . . . *Art Editor*

CLARA HOGAN . . . . . *News Editor*

FRED KLAUMINZER . . . . . *Circulation Manager*

HARLEY SALISBURY . . . . . *Photographic Editor*

KARL H. GERBRACHT . . . . . *Ass't. Business Manager*

LOUIS NAUERT . . . . . *Ass't. Art Editor*

GEORGE EVERILL . . . . . *Ass't. Circulation Manager*

### Associate Editors

ALFRED C. DAHL

EVELYN HOUSE

FRANK FAXLANGER

MARIAN RATHBUN

ESTHER HAGERTY

ALICE REINHARDT

FLOYD SAINÉ



# THE RECORD STAFF

		Finsterback		Abate		Brinkerhoff		Heller	
Lull	Smith		Maxwell		Cooke		Leinert		Fox
	Finch		Bodwell		Goodman		Smith	Boa	Blaisdell
			Sheehan				Fisher		



## The Record Staff

JEANETTE F. GOODMAN . . . . .	<i>Editor-in-Chief</i>
MISS MULHOLLAND . . . . .	<i>Faculty Adviser</i>

### Literary Board

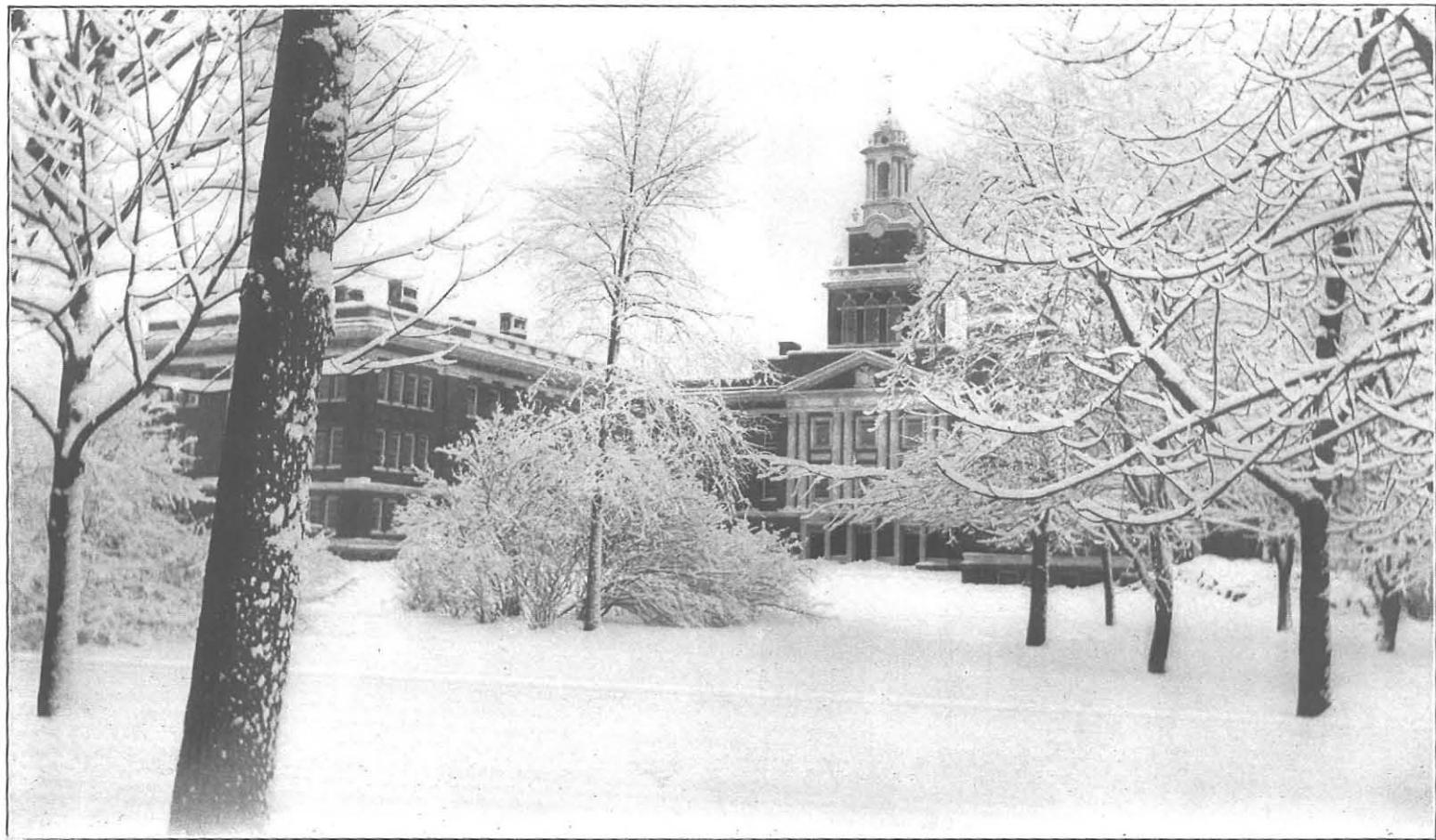
MARGARET SHEEHAN . . . . .	<i>Literary Editor</i>
FREDERICA FOX . . . . .	<i>News Editor</i>
PAULINE JACKSON . . . . .	<i>Assistant News Editor</i>
MADELINE BLAISDELL . . . . .	<i>Follies Editor</i>
WILMA SMITH . . . . .	<i>Society Editor</i>
HARRY ABATE . . . . .	<i>Men's Athletic Editor</i>
MARGARET LIENERT . . . . .	<i>Girls' Athletic Editor</i>
LOUIS HELLER . . . . .	<i>Art Editor</i>
ELIZABETH WRIGHT . . . . .	<i>Practice School Reporter</i>

### Proofreaders

MARION FISHER	KATHIERINE SMITH
---------------	------------------

### Business Board

D. NELSON FINCH . . . . .	<i>Business Manager</i>
PATRICIA BODWELL . . . . .	<i>Advertising Manager</i>
EVELYN GRAM . . . . .	<i>Assistant Advertising Manager</i>
THELMA SHOEMAKER . . . . .	<i>Circulation Manager</i>
LOUISE FRASER . . . . .	<i>Exchange Editor</i>



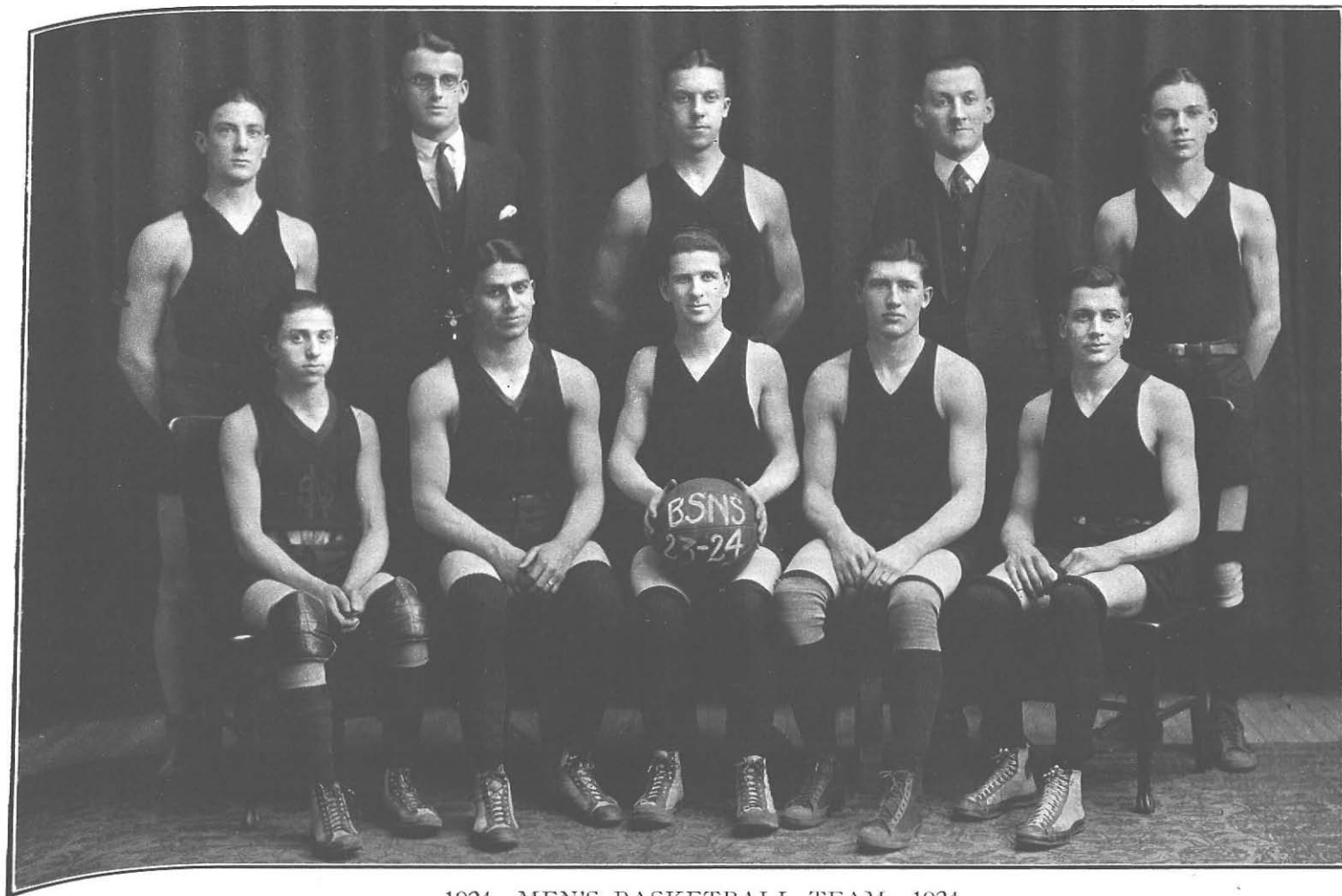
CAMPUS IN WINTER

# ATHLETICS



LOUIS HELLER '24





1924—MEN'S BASKETBALL TEAM—1924

Coughlin  
DiCesaro

Smith, Mgr.  
Abate

Lee  
McMahon, Capt.

Applebee, Coach  
Shea

Powell  
Veigel

# Basketball

## OFFICERS

JOHN McMAHON . . . . .	Captain
WALTER J. SMITH . . . . .	Student Manager
MR. W. T. APPLEBEE . . . . .	Coach
HARRY ABATE . . . . .	Captain Elect for 1924-25

Team	Position
JOHN McMAHON, Captain . . . . .	F
JACK SHEA . . . . .	F
DAN GRISLEY . . . . .	C
WILBUR LEE . . . . .	C
THOMAS CLEARY . . . . .	G
HARRY ABATE . . . . .	G
LEE POWELL . . . . .	G
WILLIAM VEIGEL . . . . .	F
ALBERT DiCESARO . . . . .	F
JOHN COUGHLIN . . . . .	C

## RECORD FOR 1923-24

Normal.....15	Fredonia Normal .....10	Normal.....17	Mechanics' Institute .....22
Normal..... 4	Masten Park ..... 9	Normal.....14	Geneseo Normal .....12
Normal.....34	Canisius Seniors ..... 8	Normal.....10	U. B. Frosh .....23
Normal.....15	Masten Park .....12	Normal.....10	St. Joseph's .....14
Normal.....17	St. Joseph's .....11	Normal..... 8	Brockport Normal .....20
Normal.....28	Mechanics' Institute .....13	Normal.....17	Alumni .....16
Normal.....15	Canisius Frosh .....10	Normal.....11	Fredonia Normal .....10
Normal.....14	U. B. Frosh .....19	Normal.....13	Geneseo Normal .....11
Normal.....13	Brockport .....19		

The best trip abroad was taken about March first. The team played Brockport, Mechanics' Institute, and Geneseo Normal on successive nights.

Alice  
O'Day.



GIRLS' BASKETBALL TOURNAMENT WINNING TEAM

Okpizs, Nichols, O'Day, Oberley, Capt.; Hurley, Congreve, Mason.



## Girls' Athletics

### TOURNAMENT GAMES AND SCORES

Second Year A .....12	Section VIII .....11	Section VIII .....17	Second Year C .....14
Section II .....29	Second Year C .....10	Section II .....34	Second Year B .....15
Second Year B .....21	Section III .....3	Second Year A .....44	Section VII .....10
Section VII .....34	Section IV .....6	Section VIII .....10	Second Year A .....5
Section II .....21	Section VIII .....21	Section VIII .....19	Second Year B .....10
Section IV .....17	Section III .....12	Section VIII .....18	Section II .....14
Section II .....33	Second Year A .....24	Second Year A .....36	Second Year C .....16
Second Year B .....16	Section VII .....15	Section II .....15	Section VIII .....15
Second Year C .....28	Section IV .....5		

The players of Junior Section II lost but one game in competition with eight teams, and were awarded the 1923-24 court championship.

Each girl on the team received a large letter "N". They are:

Margaret Hurley  
 Florence Mason  
 Mary Congreve

Cecilia Okpiz  
 Mabel Oberly, *Captain*  
 Eugenie Nichols

The following teams were chosen by the players as the best from all the Junior and Senior teams,  
 and were awarded their class numerals:

#### BLACK TEAM (SECOND YEAR)

Mary Ryan .....J. C.  
 Jane Dinsmore .....S. C.  
 Norma Drake .....F.  
 Mary Graham .....F.  
 Genevieve Ruczyk .....G.  
 Cornelia Saggese .....G.

#### ORANGE TEAM (FIRST YEAR)

Margaret Hurley .....J. C.  
 Olive Butzer .....S. C.  
 Mary Congreve .....F.  
 Ethel Paris .....F.  
 Genevieve McLane .....G.  
 Gertrude Maloney .....G.  
 Dorothy Pagel (*Substitute*) ....S. C.



THE SOCIAL CENTER ROOM







# ART KRAFT KLUB

Sanders

McVittie  
Walbridge

Blaisdell  
Moran  
Paul

Rien  
Banduhn  
Lang

Brink  
Sheehan  
Tanner

Nelson  
Palumbo  
Thompson

Moulton  
Kraus  
Wagner

Moore  
Hanson

Rouselle

# Art Kraft Klub

PURPOSE: TO SEEK BEAUTY; TO FIND IT; AND TO INTERPRET IT FOR THE WORLD.

## OFFICERS

MARGARET A. SHEEHAN	President
GLADYS V. HEPWORTH	Vice President
MILDRED LANG	Recording Secretary
ELIZABETH SLOAN	Corresponding Secretary
LILLIAN BANDUHN	Treasurer

## HONORARY MEMBERS

Mr. Bradley	Miss Brigham
Miss Sprague	Miss Hanson

## SENIOR MEMBERS

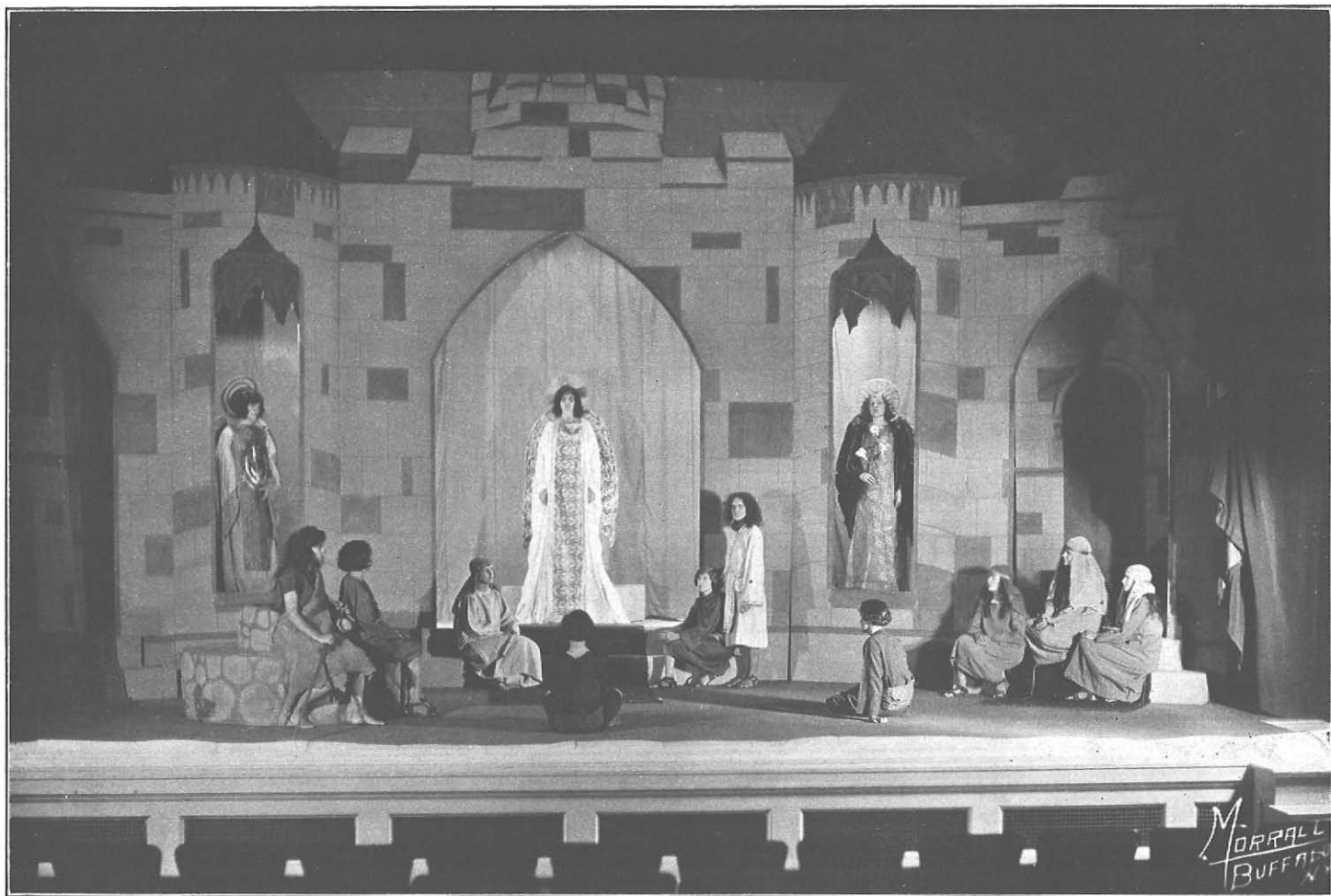
M. Helen Thompson

## JUNIOR MEMBERS

Lillian Banduhn  
Madeline Blaisdell  
Minnie Brink  
Lydia Dickman  
Gladys Hepworth  
Lolita Kraus  
Eleanore Myers  
Dorothy Moore  
Helen Moulton

Lydia Nelson  
Marian MacVittie  
Isadore Phetteplace  
Mary Palumbo  
Norine Paul  
Mary Moran  
Yvonne Rouselle  
Genevieve Ruszczyk  
Mary Ryan  
Elsa Sanders

Ellen Schoenborn  
Margaret Sheehan  
Elizabeth Sloan  
Beatrice Tanner  
Alpha Ursitti  
Jeanette Wagner  
Gladys Walbridge  
Sister Mary Magdalene  
Sister Mary Constance



A SCENE FROM "THE BLESSED BIRTHDAY"



## Dramatic Club

## OFFICERS

THELMA SHOEMAKER . . . . .	<i>President</i>
MARION FISHER . . . . .	<i>Vice President</i>
GERTRUDE MYERS . . . . .	<i>Secretary</i>
KARL H. GERBRACHT . . . . .	<i>Treasurer</i>
MISS JANE KEELER . . . . .	<i>Director</i>

CAST OF "THE BLESSED BIRTHDAY"  
By Florence Converse

## THE ANGELS

Angel of the Annunciation . . . Ruth E. Barnum  
Angel of the Nativity . . . Marion Fisher  
Angel of the Resurrection . . . Edith Kennebrook

## THE HOLY FAMILY

Joseph ..... Fred Klauminzer  
Mary ..... Thelma Shoemaker  
Jesus ..... Dorothy A. Young

## THE CHILDREN

John the Baptist . . . . . Gertrude L. Myers  
Abner . . . . . Mildred Weis  
Hezekiah . . . . . Helen F. Haskell

THE PLACE . . . . . Nazareth

THE TIME . . . . . Twelfth Birthday of the Boy Jesus

Eli .....	Geraldine Williamson
Tobias .....	Catherine Smith
Miriam .....	Frances Zacher
Leah .....	Dorothy Stanley
Esther .....	Esther Terry
Ruth .....	Evelyn Gram

## THE WEDDING PARTY

The Bride .....	Alta Bolender
The Bridegroom .....	Frank Faxlanger
Mother of the Bride .....	Frederica M. Fox
Father of the Bride .....	Karl H. Gerbracht
The Guests .....	Jeanette Goodman, Margaret Leinert, Dorothy Maxwell



A SCENE FROM "THE CRADLE SONG"

CAST OF "THE CRADLE SONG"

By Martinez Sierra

The Prioress .....Marion L. Backman  
The Vicareess .....Edith Kennebrook  
Mistress of the Novices .....Frederica M. Fox  
Sister Toneria .....Dorothy A. Young  
Sister Inez .....Mary I. Winter  
Sister Joanna of the Cross ....Evelyn I. Gram  
Sister Marcella .....Cynthia D. Reed

Sister Mary Jesus .....Marion A. Fisher  
Sister Sagrario .....Esther Terry  
Teresa .....Gertrude Rodems  
Antonio .....Herman W. Lare  
The Doctor .....William L. Brinkerhoff  
The Poet .....Nelson B. Rose  
Monitors .....Rosalie House, Linda Hallett

*Scene:*—A Convent of Enclosed Dominican Nuns

Director .....Miss Keeler

Settings designed by .....Sheldon K. Viele

Settings painted by .....Charles B. Bradley

Decorations painted by .....Sheldon K. Viele

Music directed by .....Miss Speir

## Faculty-Student Council

### OFFICERS

MR. S. CLEMENT . . . . .	<i>President</i>
GEORGE BAXTER . . . . .	<i>Secretary</i>

### FACULTY MEMBERS

Miss Boorman	Miss Small
Miss Brigham	Miss Speir
Mr. Phillippi	

### STUDENT MEMBERS

Marion Backman	Elizabeth Faul
George Baxter	Mary Gorman
John Coughlin	Kenneth Marsh
Esther Strootman	

### AUXILIARY COMMITTEE

All Section Captains

The object of this organization is to facilitate helpful co-operation between the faculty and students in furthering the welfare of the school and the student body. The Council has general supervision over all student activities, including social affairs, athletics, publications, and student organizations.

## Athletic Association

DONALD SMITH . . . . .	<i>President</i>
NORMA DRAKE . . . . .	<i>Vice President</i>
DANIEL GRISLEY . . . . .	<i>Secretary</i>
JEANETTE WAGNER . . . . .	<i>Treasurer</i>
LOUIS NAUERT . . . . .	<i>Cheer Leader</i>



## The Household Arts Club

## OFFICERS

MARION BACKMAN	.	.	.	.	.	.	.	.	.	.	.	.	.	.			<i>President</i>
ALTA BOLENDER	.	.	.	.	.	.	.	.	.	.	.	.	.	.			<i>Vice President</i>
EMMA COLEMAN	.	.	.	.	.	.	.	.	.	.	.	.	.	.			<i>Secretary</i>
DORIS COTTON	.	.	.	.	.	.	.	.	.	.	.	.	.	.			<i>Treasurer</i>

The H. A. Club is open to all students of the Homemaking Department who wish to become members. This year the Club has affiliated with the National Home Economics Association.

## Men's Club

Every man automatically becomes a member of the Men's Club as soon as he is enrolled in the Normal School. There are many departments and different courses open to men, consequently the organization strives to promote friendship, unity, and co-operation between the various sections.

## OFFICERS

[illegible]



Y. W. C. A.

# Y. W. C. A.

MOTTO: "By their honor ye shall know them".

## OFFICERS

RUTH WILFERT	President
ROWENA RAYMOND	Vice President
EMMA COLEMAN	Secretary
MADALINE BLAISDELL	Treasurer
MARION KOENIG	Undergraduate Representative

## Delegates to Silver Bay Conference

HELEN MOULTON	JEANETTE WAGNER
EMMA COLEMAN	ELOISE WEIMAR
MARGUERITE PICKUP	MILDRED WELLS

RUTH WILFERT

## Honorary Member

MISS REED

## CALENDAR

September	Tea in honor of new students. Hike and weiner roast at Fort Erie.
October	House Party at Forty Acres. Silver Bay meeting.
November	Miss Klenck, National Secretary, outlined work and purpose of the Y. W. C. A. Thanksgiving baskets.
January	Y. W. C. A. Assembly program. Candy sale.
February	Tag Day and afternoon dance.
March	Election of new officers.
May	New officers installed.
June	Silver Bay Conference.

## Class Song

TUNE: *Soldiers Chorus from "Faust"*

March, comrades, bear your banners high,  
Banners of service against the sky.  
Courage and faith, through vict'ries won.  
Press forward and lead; youth calls, we must heed—  
Our labor's begun!

Forth to answer the call—while our torch is bright.  
Fling the message to all—ours the work of light.  
Carry into the world—love of service true  
And give of our lives that youth may be free  
And truth ever new.

March, comrades, bear your banners high,  
Banners of service against the sky.  
Courage and faith, through vict'ries won.  
Press forward and lead; youth calls we must heed—  
Our labor's begun!

ALICE E. HEISER



# MUSICAL CLUBS



## Girls' Glee Club

MISS SPEIR . . . . . *Director*  
 ROSETTA HEBENSTREIT . . . . . *President*

## Men's Glee Club

MISS SPEIR . . . . . *Director*  
 JOHN COUGHLIN . . . . . *President*

## Orchestra

MISS HURD . . . . . *Director*  
 ROWENA RAYMOND . . . . . *President*



### GIRLS' GLEE CLUB

Row 1—Cook, Madden, Grampp, Holbrook, Dolph, McNally, Biggerstaff, Brennan, Fuller, Goodman, Koenig, Joyce, Downey, Haskell, Ducker.  
 Row 2—Heafner, Brick, McFadden, Kennebrook, Gemmer, Barrows, Glor, Paul, Nelson, Coleman, Krause, Morgan, Measer, Cheney, Taylor, Drier, Tooley.  
 Row 3—Winter, Warnke, House, Sommer, Miller, Hoeldtke, Laurie, Risley, Raymond, Oberley, Pike, Isch, Twohey, Pierce.  
 Row 4—Brink, Brown, Carlson, Dwyer, Pierce, Ferris, Ward, Newburgh, Hebenstreit, Miss Speir, Director; Mazuca, Cannon, Hoeldtke, Willfert, Dziminska, Denecke, Cook.

## Girls' Glee Club

MISS SPEIR . . . . .	<i>Director</i>
ROSETTA HEBENSTREIT . . . . .	<i>President</i>
RUTH FULLER . . . . .	<i>Vice President</i>
ROWENA RAYMOND . . . . .	<i>Secretary</i>
MINNIE BRINK . . . . .	<i>Treasurer</i>
MILDRED BARROWS . . . . .	<i>Librarian</i>
CHARLOTTE RISLEY . . . . .	<i>Accompanist</i>

### *First Sopranos*

Mildred Barrows	Ella Coleman	Kathryn Glor	Helen Kirkland	Pauline Morgan	Rowena Raymond
Patricia Bodwell	Marie Denecke	Jeanette Goodman	Josephine Laurie	Lydia Nelson	Catherine Sommer
Mabel Carlson	Anna Downey	Evelyn Grampp	Marianna Luongo	Mabel Oberley	Josephine Taylor
Eleanor Cheney	Helen Downing	Miriam Heafner	Mary Mazuca	Norene Paul	Marion Tooley
Helen Cook	Ruth Gemmer	Esther Hoeldtke	Alice McNally	Patience Pierce	Ruth Wilfert
Harriet Cooke	Eugenia Gentner			Laura Pike	Mary Winter

### *Second Sopranos*

Madaline Blaisdell	Erma Euler	Ruth Holbrook	Lolita Krause	Dorothy Moore
Minnie Brink	Helen Haskell	Lucile Hull	Kathryn Madden	Elizabeth Newburgh
Jessie Cross	Mildred Hicks	Linette Isch	Elma Measer	Ethel Warnke
Charlotte Dziminska	Katherine Hoeldtke	Louise Jillson	Leonore Miller	

### *Altos*

Marion Biggerstaff	Esther Cannon	Mary Dwyer	Rosetta Hebenstreit	Edith Kennebrook	Helen Pierce
Evelyn Brennan	Blanche Dolph	Angell Ferris	Rosalie House	Marion Koenig	Alpha Ursitti
Alma Brick	Anna Drier	Ruth Fuller	Rose Joyce	Ruth Knell	Evelyn Ward
Lillian Brown	Doris Ducker	Helen Futterer	Edith Kener	Manola McFadden	



### MEN'S GLEE CLUB

Row 1—Baxter, Popp, Hayes, Archer, Kumpf, Shaver, Coughlin, Labiak, Salisbury, Nauert, Everill, Faxlanger.  
 Row 2—Mitchell, Baker, Ermold, Hubachek, DiCesaro, Jones, Lanahan, Finnegan, Hummell, Dahl, Boa.  
 Row 3—Finsterback, Sullivan, McKenzie, Huth, Quinn, Finch, Gover, Saggese, Marsh, Gordon, Hagen.



## Men's Glee Club

MISS SPEIR . . . . .	<i>Director</i>
JOHN COUGHLIN . . . . .	<i>President</i>
CARL KUMPF . . . . .	<i>Vice President</i>
ELTON SHAVER . . . . .	<i>Secretary and Treasurer</i>
ALFRED LABIAK . . . . .	<i>Librarian</i>
CHARLES GIBSON . . . . .	<i>Accompanist</i>

### *First Tenors*

Henry Baker  
George Baxter  
Fred Ermold

Raymond Hayes  
James McKenzie  
Hugh Mitchell

Lewis Nauert  
Edward Quinn  
Gerald Sullivan

### *Second Tenors*

Joseph Archer  
Raymond Boa  
John Coughlin  
Albert DiCesaro

Frank Finnegan  
William Gordon  
Howard Hagen  
Carl Hubachek

Ralph Hummell  
William Huth  
Paul Keller  
Alfred Labiak

William Lanahan  
Peter Saggese  
Elton Shaver  
William Veigel

### *Basses*

Walter Butzer  
Alfred Dahl

Frank Faxlanger  
Nelson Finch

Donald Gover  
Robert Jones

Carl Kumpf  
Paul Popp



## ORCHESTRA

Row 1—Rosowski, Twohey, Hurt, Raymond, Miss Hurd, Director; Collins, Heath, Lord, Wolf.  
 Row 2—Kellogg, Bresnahan, Ren, Congreve, Winter, Ferris, Kokar.  
 Row 3—Sullivan, Fitzgerald, Seil, Saggese, Hummell, Hayes, Vidal, Shear, Sala.

## The Orchestra

MISS HURD . . . . .	Director
ROWENA RAYMOND . . . . .	President
CHARLES GIBSON . . . . .	Vice President
HERBERT SHEAR . . . . .	Secretary
RALPH HUMMELL . . . . .	Treasurer
SEELYE VIDAL . . . . .	Librarian
MARIE FITZGERALD . . . . .	Pianist

### Violins

Mary Bresnahan	Bernadette Culkin	Dorothy Heath	Ibolya Kokar	Louise Ren	Veronica Twohey
Evelyn Collins	Angell Ferris	Josephine Hurt	Helen Lord	Mary Rosowski	Mary Winter
Mary Congreve	Raymond Hayes	Florence Kellogg	Rowena Raymond	Peter Saggese	

### Pianist

Marie Fitzgerald

### Cellos

James Sala  
Mary Sullivan

### Cornets

Charles Gibson  
Herbert Shear  
Seelye Vidal

### Drums

Franklin Wolf

### Trombone

Edwin Seil

## Calendar for 1923-24

### SEPTEMBER

- Opening of school.
- 18 Dr. Rockwell told of his trip to Europe, in Assembly.
- 25 Mr. Haring, a Japanese Missionary, gave an interesting talk on Japan.

### OCTOBER

- 2 Dr. Spaeth and the Ampico furnished an excellent musical program.
- 12 Columbus Day.
- 23 Talk on "Silver" given in Assembly by Miss Egge.
- 26 Record Dance in gymnasium.

### NOVEMBER

- 5 Edith Wynn Mathison and Charles Rann Kennedy in "The Chastening."
- 23 Miss Shaw and Mr. Child with the Duo-Art gave a delightful recital.
- Good English Week Poster contest held by the Art Kraft Klub.
- Thanksgiving Vacation.

### DECEMBER

- 4 Dr. S. V. V. Holmes of Westminster Church gave an interesting address in chapel on "Books and Reading."
- 14 The Chromatic Club entertained with a delightful musical program.
- 16, 18, 19 Presentation of "The Blessed Birthday" by the members of the Dramatic Club, under the direction of Miss Keeler.
- 18 Carols by Glee Club at Normal and throughout the city.
- 19 Annual Christmas Party in the gymnasium. Carols by the Glee Club.
- Christmas Holidays.

### JANUARY

- 18 Students of Music Appreciation classes gave program of Folk Music.
- 28 Opening of Second Semester.

### FEBRUARY

- 14, 15 Erie County Teachers' Association with display at Normal.
- 15 Vocational Men had charge of assembly program.

- 21 Practice School had special Washington's Birthday program.
- Presentation and unveiling of Statue of Washington by Class of 1923.
- 28 Senior Tag Dance in gymnasium.
- Mrs. Charles B. Evans of Zonta Club spoke on the Manufacture and History of Chinaware.

### MARCH

- 4-7 Art Kraft Exhibition of pictures.
- 14 Home Making Department presented a delightful program of Period Costumes. Senior Supper and Dance.
- 21 Psi Phi Fraternity brought the Musical Club of Rochester University to Normal for a concert.
- 28 Record Staff presented "The Man in the Bowler Hat", a one-act play.

### APRIL

- 8 Kindergarten-Primary students and children gave enjoyable program of shadow pictures and tableaux, for the Assembly.
- 11 Miss Helen Marrinan gave reading of a Carolina Mountain Folk Play, under auspices of Clonian Sorority.
- 16-28 Easter Vacation.
- April 30, May 1-4 "The Cradle Song" presented by Miss Keeler and the members of the Dramatic Club.

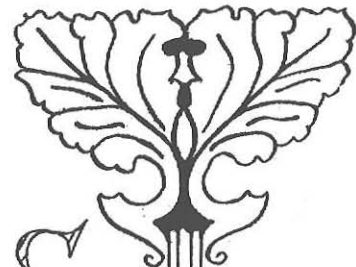
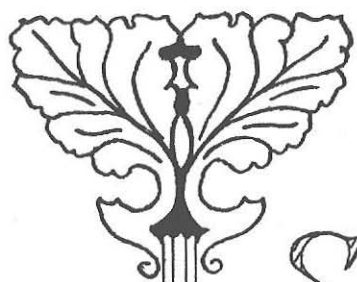
### MAY

- 2 Dr. Graves spoke to the students in assembly.
- 5 Y. W. C. A. Carnival and dance in gymnasium.
- 15 Spring Musical Concert given by Glee Clubs and Orchestra, under direction of Miss Speir and Miss Hurd.
- 30 Memorial Day.

### JUNE

- 9-13 Final Examinations.
- 14 Alumni Day. Banquet and informal dance, Hotel Statler Ballroom.
- 15 Baccalaureate Service.
- 16 Class Day.
- 17 Commencement.





SORORITIE S

AND

FRATERNITIE S





# PHI UPSILON OMICRON

Schnepple  
Rathbun

Backman  
Allen  
Thompson

Miss Caudell  
Paul

Venherm  
Lockwood  
Weis

House  
Strootman

# Phi Upsilon Omicron

## Mu Chapter

Phi Upsilon Omicron is a national professional organization. It is an honorary fraternity in the field of Home Economics. Mu Chapter was established at the Buffalo State Normal School, December, 1923.

### OFFICERS

ELIZABETH FAUL . . . . .	<i>President</i>
ELNA ALLEN . . . . .	<i>Vice President</i>
JULIA LOCKWOOD . . . . .	<i>Recording Secretary</i>
HELEN THOMPSON . . . . .	<i>Corresponding Secretary</i>
ESTHER STROOTMAN . . . . .	<i>Treasurer</i>
MILDRED WEIS . . . . .	<i>Candle Editor</i>
EDNA VENHERM . . . . .	<i>Chaplain</i>
MARIAM RATHBUN . . . . .	<i>Librarian</i>

*Honorary Member—MISS CAUDELL*

### SENIOR MEMBERS

Marion Backman  
Evelyn House  
Esther Prefert

Mariam Rathbun  
Elizabeth Schneppe  
Helen Thompson

Edna Venherm  
Mildred Weis

### JUNIOR MEMBERS

Elna Allen  
Elizabeth Faul

Julia Lockwood  
Esther Strootman

Carolyn Weppner  
Ruth Woodward



### ARETHUSA SORORITY

1. Row—House, Sheehan, Thompson, Kirkland. 2. Row—Brigham, Hepworth, Weimar, Rodems, Cooke, Roberts, Northrup, Tooley, Rextrew. 3. Row—Blacklock, Biddlecombe, Nevins, Bolender, Woodward, Barrows, Kern, Haskell, Jackson. 4. Row—Moulton, Vedder, Shoemaker, Barth, Petrie, Davis, Rixford, Apsey.



## Arethusa Sorority

## Zeta Chapter

## OFFICERS

HARRIET COOKE	President
MARGARET NORTHRUP	Vice President
MARIAN TOOLEY	Recording Secretary
EDITH KIGER	Corresponding Secretary
ELOISE WEIMER	Treasurer

## FACULTY MEMBERS

Miss Bishop  
Mrs. Gemmill  
Miss Boorman

## SENIOR MEMBERS

Marian Rathbun

## JUNIOR MEMBERS

Minnie Apsey  
Mildred Barrows  
Anna Barth  
Isadore Blacklock  
Alta Bolander  
Ethel Biddlecombe  
Harriet Cooke  
Dale Davis



### CLIONIAN SORORITY

1. Row—Coleman, Daw, Houghton, Brill. 2. Row—Abrams, Hebenstreit, Draine, Roskamp, Allen, Bell, Brown, Coleman, Parker. 3. Row—Miller, Edwards, Gorman, Weppner, Brink, Wolf, Torrey, Hanrahan, Potter. 4. Row—Hagerty, Dohn, Galvin, Carmichael, Randall, Allen, Strootman, Blaisdell. 5. Row—Steinhauser, Miller, Leinert.

# Clionan Sorority

COLORS: *Gold and White.*

## OFFICERS

LOUISE H. ALLEN . . . . .	<i>President</i>
ELEANOR BROWN . . . . .	<i>Vice President</i>
RUTH KNELL . . . . .	<i>Treasurer</i>
ROSETTA HEBENSTREIT . . . . .	<i>Recording Secretary</i>
JEANETTE DRAINE . . . . .	<i>Corresponding Secretary</i>
EMMA COLEMAN . . . . .	<i>Junior Delegate</i>

## FACULTY MEMBERS

Miss Groves  
Miss Robson

Miss Keeler  
Miss Small

Miss O'Reilly  
Miss Weis

Miss Hanson

## SENIOR MEMBERS

Eleanor Brown

Helen Randall

Esther Hagerty

## JUNIOR MEMBERS

Louise Abrams  
Elna Allen  
Louise H. Allen  
Lois Bell  
Madeline Blaisdell  
May Brill  
Minnie Brink

Jean Carmichael  
Ella Coleman  
Emma Coleman  
Katherine Daw  
Viola Dohn  
Jeanette Draine  
Marion Edwards

Helen Futterer  
Mary Galvin  
Mary Gorman  
Jane Hanrahan  
Rosetta Hebenstreit  
Mary Elizabeth Houghton  
Ruth Knell

Margaret Leinert  
Katharine Miller  
Leonore Miller  
Capitola Parker  
Dorothy Potter  
Mary Rhodes  
Mary Roskamp

Betty Scott  
Martha Steinhauser  
Esther Strootman  
Grace Torrey  
Caroline Weppner  
Louise Wolf



# SIGMA SIGMA SIGMA SORORITY

Haberer  
Smith

Cook  
Weis

Karner  
Downing  
Clark  
Fraser

Gram  
Backman

Hogan

Fisher  
Terry  
Sloan  
Foote

Campbell  
Kennedy

Hallett  
Marseilles



# Sigma Sigma Sigma Sorority

## Zeta Chapter

COLORS: *Purple and White*

### OFFICERS

MARION BACKMAN	. . . . .	<i>President</i>
DOROTHY BALME	. . . . .	<i>Vice President</i>
CHARLOTTE KENNEDY	. . . . .	<i>Recording Secretary</i>
MILDRED WEIS	. . . . .	<i>Corresponding Secretary</i>
EMMA SLOAN	. . . . .	<i>Treasurer</i>

### FACULTY MEMBERS

Miss Englebreck

Miss Roehsler

### HONORARY MEMBERS

Miss Bacon

Miss Howland

Mrs. Taylor

### SENIOR MEMBERS

Marion Backman

Clara Hogan

Jean Marseilles

Mildred Weis

### JUNIOR MEMBERS

Dorothy Balme  
Anne Campbell  
Ethel Clark  
Helen Cooke  
Helen Downing

Marion Fisher  
Margaret Foote  
Louise Fraser  
May Goehler  
Evelyn Gram

Leah Haberer  
Linda Hallett  
Margaret Karner  
Edith Kennebrook  
Charlotte Kennedy

Mildred Neff  
Marion Post  
Emma Sloan  
Loraine Smith  
Esther Terry



### TAU PHI SORORITY

1. Row—Webster, Fox, Choate, Bodwell, Brumley. 2. Row—Chapman, Hurd, McDonald, Young, Cruickshank, Gunsolly, Wishard. 3. Row—Singleton, Heath, Hull, McNaughton, Jay, Traut, Smith. 4. Row—Maxwell, Lull, Heafner, Simmons.

## Tau Phi Sorority

COLORS: *Red and White.*

### OFFICERS

DOROTHY A. YOUNG	. . . . .	<i>President</i>
PATRICIA BODWELL	. . . . .	<i>Vice President</i>
MARGARET M. MACDONALD	. . . . .	<i>Secretary</i>
WINIFRED M. CRUICKSHANK	. . . . .	<i>Corresponding Secretary</i>
MARJORY GUNSOLLY	. . . . .	<i>Treasurer</i>

### FACULTY MEMBERS

Miss Chapman

Miss Hurd

Miss Wishard

### MEMBERS

Patricia Bodwell  
Dorothy Brumley  
Josephine Choate  
Winifred Cruickshank  
Frederica M. Fox

Marjory Gunsolly  
Miriam Heafner  
Dorothy Heath  
Lucille Hull  
Pauline Jay

Gladys Lull  
Margaret M. MacDonald  
Ruth MacNaughton  
Mildred Shasick  
Leah Simmons

Althea Singleton  
Catherine Smith  
Arletta Traut  
Eunice Webster  
Dorothy A. Young



### THETA KAPPA SORORITY

1. Row—O'Donnell, O'Connell. 2. Row—Hallett, VanKeuran, Moore, Joyce, Kie., Miller, Regan. 3. Row—Ames, Downey, Kingborn, Miss Remer, Miss McMahon, Miss Conklin, McDermant, McMahon, Eckert. 4. Row—Koenig, Zeilbeer, Kirkland, Dwyer, Waver.



# Theta Kappa Sorority

## Alpha Chapter

COLORS: *Blue and White.*

### OFFICERS

ROSE JOYCE . . . . .	<i>President</i>
ANNA KIEF . . . . .	<i>Vice President</i>
ELLEN MOORE . . . . .	<i>Recording Secretary</i>
GERTRUDE VANKEUREN . . . . .	<i>Corresponding Secretary</i>
ESTHER MILLER . . . . .	<i>Treasurer</i>

### FACULTY MEMBERS

Miss Conklin, *Adviser*

Miss McMahon

Miss Remer

### SENIOR MEMBERS

Mary Louise Hallett  
Rose Joyce  
Anna Kief

Marion Koenig  
Bertha Kingborn.  
Helen Kirkland

Jessie Metzger  
Esther Miller  
Ellen Moore

Mary O'Donnell  
Charlotte Risley  
Gertrude VanKeuren

Fern Waver

### JUNIOR MEMBERS

Betty Ames  
Anna Downey

Mary Alice Dwyer  
Grace Eckert

Viola McDermand  
Alice McMahon

Gertrude O'Connell  
Grace Regan

Erma Wolf  
Helen Zeilbeer



### KAPPA KAPPA KAPPA FRATERNITY

1. Row—Hummell, Grisley, Nauert, Gibson, Abate. 2. Row—Heller, Kumpf, Labiak, Vogt, Finch, Mitchell Kemp, Shaver, Finsterback. 3. Row—Coughlin, VanHoff, Baxter, Hepp, McMahon.

# Kappa Kappa Kappa Fraternity

COLORS: *Maroon and White.*

## OFFICERS

MR. PERKINS	. . . . .	<i>Honorary President</i>
MR. CLEMENT	. . . . .	<i>Faculty Adviser</i>
LOUIS NAUERT	. . . . .	<i>President</i>
DANIEL GRISLEY	. . . . .	<i>Vice President</i>
WILLIAM VEIGEL	. . . . .	<i>Secretary</i>
CHARLES GIBSON	. . . . .	<i>Treasurer</i>
RALPH HUMMELL	. . . . .	<i>Corresponding Secretary</i>
HARRY ABATE	. . . . .	<i>Sergeant at Arms</i>

## SENIOR MEMBERS

George Baxter  
Nelson Finch

Clarence Hepp  
Oswald Kemp

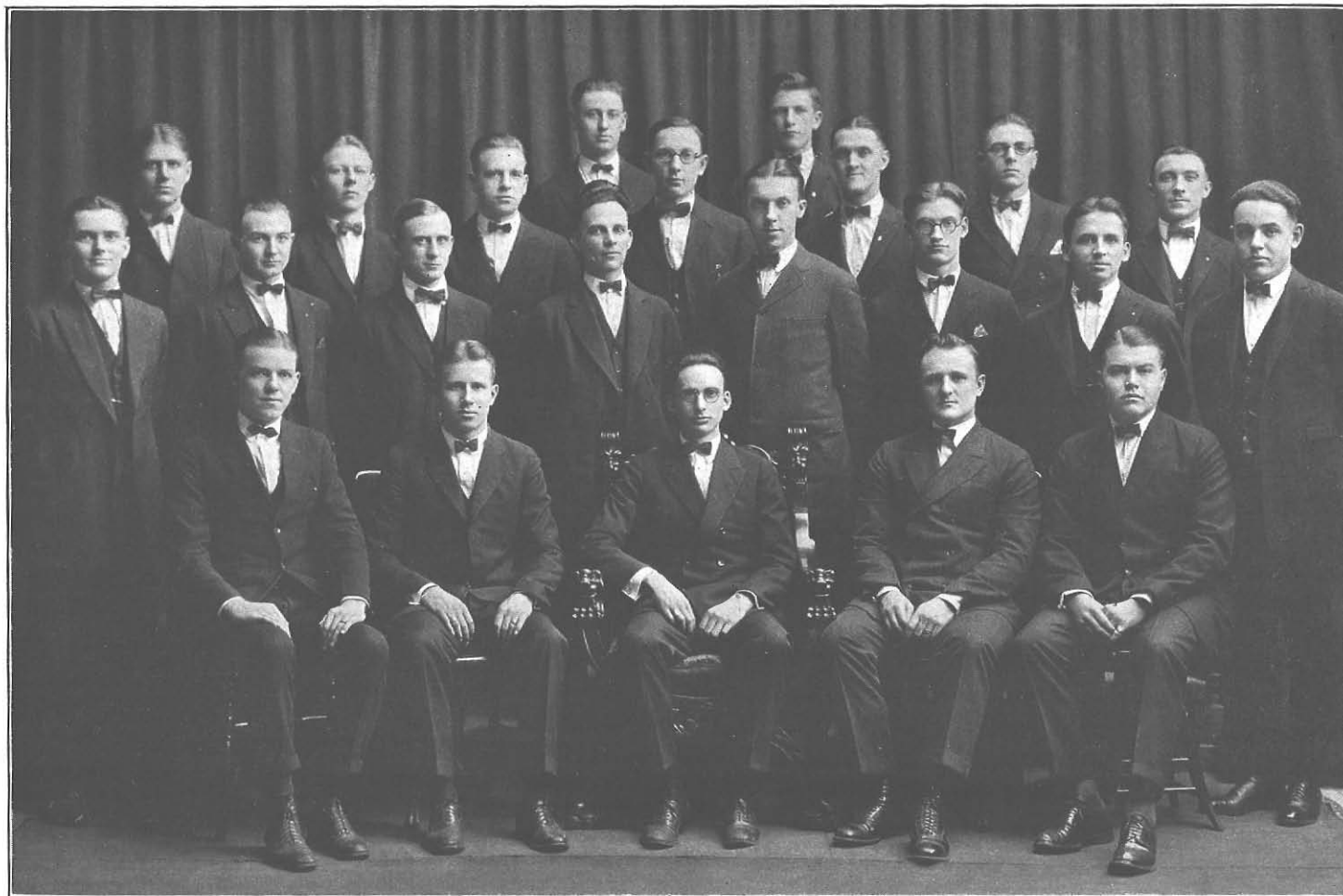
John McMahon  
Hugh Mitchell

## JUNIOR MEMBERS

Alfred Labiak  
John Coughlin  
Fred Finsterback

Alton Heller  
Carl Kumpf

Elton Shaver  
Howard VanHoff  
Allen Vogt



### PSI PHI FRATERNITY

1. Row—Bedaska, Shear, Salisbury, Klauminzer, Larc. 2. Row—Everill, Watson, Eydt, White, Lee, Boa, Ahr, Miller. 3. Row—Dahl, Geyer, Gordon, Murbach, Furman, Hagen, Hayes. 4. Row—Marsh, Klieman.



# Psi Phi Fraternity

## Beta Chapter

### OFFICERS

HARLEY SALISBURY	. . . . .	<i>President</i>
HERBERT SHEAR	. . . . .	<i>Vice President</i>
NELSON B. ROSE	. . . . .	<i>Secretary and Treasurer</i>

### SENIOR MEMBERS

Frank J. Bedaska	Raymond W. Hayes	Harley E. Salisbury
George J. Everill	Fred A. Klauminzer	Herbert L. Shear
Frederick H. Eydt	Herman W. Lare	Reginald M. White
William Gordon	Kenneth B. Marsh	

### JUNIOR MEMBERS

Arthur F. Ahr	Clifford L. Geyer	Nelson J. Murbach
Raymond M. Boa	Howard S. Hagen	Nelson B. Rose
Alfred H. Dahl	Wilbur J. Lee	George W. Watson
	Dudley R. Miller	

# BUFFALO STATE NORMAL SCHOOL

## SUMMER SESSION

June 30 to August 8, 1924

Courses carrying College and Normal School credit will be offered, which will appeal to teachers in service and Normal School students. Rural teachers will find courses leading to the equivalent training class certificate. A strong group of special lectures will be given daily during the assembly hour. Teachers of Homemaking are urged to consider the special courses in this field. . . . .

For further information, address

H. W. ROCKWELL, *Principal*

BUFFALO STATE NORMAL SCHOOL

# — G E N I I !

❏ Could that fabled lamp of old respond to Aladdin's entreaty more faithfully than our silent servant of today—electricity?

❏ We touch a button—out from slender copper threads leaps the energy of Niagara's tumbling torrents a score, or even ten-score, miles away to do our bidding.

❏ Day or night Niagara Power does our work, lights our way, runs our mills, pulls our cars; and—yes!—entertains us too.

❏ Modern "Genii," indeed!

❏ The engineering skill and foresighted management

of private enterprise under government regulation gives us this modern magic.

❏ Already the greatest producer of electrical energy at the lowest average rate received by any single generating system on this continent, The Niagara Falls Power Company has just put into operation the largest hydro-electric unit ever constructed—70,000 horsepower capacity.

❏ Two more similar units will be added this summer. Two million tons each year from the diminishing coal-supply would duplicate the output of these three giants. They virtually will provide industry with the potential power of eight million men.

*"The Greatest Good to the Greatest Number"*

## THE NIAGARA FALLS POWER COMPANY

As a guide to your judgment in  
selecting your agency, remember  
that the better positions in the bet-  
ter schools are filled by the

Schermerhorn  
Teachers' Agency

*Charles W. Mulford, Prop.*

366 Fifth Avenue : : New York City

Cleveland Office: 1836 Euclid Avenue

Pittsburgh Office: 406 Union Trust Building

"A Superior Agency  
for Superior People"

*Since 1855*



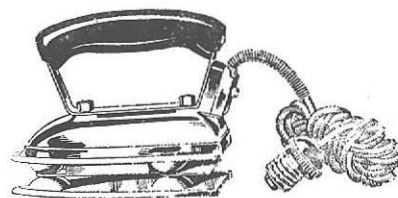
**COPPINS  
HIMSELF**

PAINTING AND  
INTERIOR DECORATING

Office and Studio  
So. Elmwood Ave., opp. Hutchinson High School

# Hoefler's Ice Cream

*"The Cream Supreme"*



*About  
Ironing!*

## Westinghouse ELECTRIC STREAMLINE IRON

with the beveled edge, irons  
quicker, better, more econom-  
ically and is built of the best.

*Sold by*

**McCarthy Bros. & Ford**  
*Electrical Headquarters*  
75 West Mohawk Street



*Great Pianists  
Advise You*

That there is but one reproducing piano that is capable of recording all that they play and reproducing all that is recorded.

Therefore, a large majority of leading pianists are recording exclusively for the

**DUO-ART**  
*Today*

# STEINWAY

The Instrument of the Immortals

*A World Famed Name*

Wherever music is heard, the name *Steinway* instantly calls to mind the thought of world leadership in piano building. The magic of the *Steinway* name is the magic of a reputation that has spread to the far corners of the earth.

The *Steinway* ideal is ever guarded by extraordinary skill and the most vigilant supervision. To watch the *Steinway* as it progresses toward completion is to fully appreciate the fine workmanship that has made the *Steinway* name representative of an achievement unparalleled in the entire history of the music industry.

## Denton, Cottier & Daniels

The Quality Music House of Buffalo

COURT AND PEARL STREETS

Founded in 1827

# Canisius College

MAIN AND JEFFERSON STREETS

## College of Arts and Sciences

---

Four Years' Classical Course  
Degree B. A.

Four Years' Science Course  
Degree B. S.

---

Pre-Engineering, Pre-Dental, Pre-Medical  
and Business Courses

---

Late Afternoon and Evening Courses for Teachers

Summer School from July 5th to August 11th

Send for Bulletin

REV. M. J. O'MAILIA, S. J., Dean

## Secretarial Science

A highly refined and  
profitable training for  
ambitious women. . .



*Send for particulars*

Bryant & Stratton College

Main Street at North

Buffalo, New York

# BUFFALO VOLKSFREUND PRINTING CO.

"The Home of Particular Printing"



PUBLISHERS  
PRINTERS  
DESIGNERS  
ENGRAVERS  
BINDERS



46-48 BROADWAY

TELEPHONES, SENECA { 7370  
7371

THIS BOOK IS ONE OF OUR PRODUCTS

GEO. F. FRANCIS

COAL

---

376 CONNECTICUT STREET

## Let the Morris Plan Pay

- your income tax*
- insurance premiums*
- vacation expenses*
- Christmas bills*
- coal bills*

**T**HE ordinary, every week expenses take care of themselves. It is the once-a-year items that bob up so disconcertingly—unless you let the Morris Plan take care of them.

A conveniently small fraction of your income, laid aside regularly, gives you the cash just when you need it. And you get 5 per cent interest on the account while it is growing.

If you have neglected to provide beforehand, you can borrow on an agreement to pay in small weekly or monthly installments. Ask about it.

Morris Plan  
Certificates pay **5%**

**The Morris Plan Company of Buffalo**

Loans and Investments

FRANKLIN AT HURON STREET



**Frank B. Hoole**

*Stationer*

950 Main Street  
near Allen

Loose Leaf Note Books  
and Fillers

Fountain Pens

Eversharp Pencils

Engraving—Printing

**BRAYTON'S  
INCORPORATED**

*“The Gift Shop of Buffalo”*

599 Main Street, at Chippewa

For more than a generation the favorite shopping place for Silver, China, Glassware, Lamps, Pottery, and Art Objects.

We feature the world renowned Lenox China (the China of the White House) and will be pleased to have you call at your convenience and inspect our attractive stock.

(Tables with carefully chosen Gifts at \$5, \$7.50 and \$10.)



WM. J. ATWILL

L  
I  
N  
O  
T  
Y  
P  
E

C  
O  
M  
P  
O  
S  
I  
T  
I  
O  
N

45 NORTH DIVISION ST.  
SENECA 2249

Compliments  
of



The Largest De-  
partment Store  
East of Main St.

Across from the Broadway Market.

*Cox Sons & Vining*

131-133 EAST 23rd STREET  
NEW YORK

---

CAPS AND GOWNS



HOODS FOR  
ALL DEGREES

---

*Outfits for Sale or Rental—  
Moderate Prices*

## Otto Ulbrich Co.

*Books, Stationery, School Supplies*

386 MAIN STREET      222 DELAWARE AVENUE  
13 W. EAGLE STREET  
BUFFALO, N. Y.

How MUCH Do You EARN?      How MUCH Do You SPEND?  
How MUCH Do You SAVE?

To give you an idea what it means to save a fixed amount weekly in our

### SHARE ACCOUNT

25 cents per week	for about 6½ years with profits will amount to.	\$ 100.00
50 cents per week	" " " " " " " " " "	200.00
\$1.00 per week	" " " " " " " " " "	400.00
2.00 per week	" " " " " " " " " "	800.00
3.00 per week	" " " " " " " " " "	1,200.00
5.00 per week	" " " " " " " " " "	2,000.00

## Erie Savings & Loan Association

39 Erie Street, cor. Pearl

Under Supervision of New York State Banking Department  
We also issue fully paid up shares in amounts of \$100.00 on which a dividend of 5 per cent is paid.  
We also issue books in which you can deposit any amount at any time.  
You can also draw against this account at any time.  
On this Class of Savings, 4 per cent is paid, compounded quarterly.

Call a Norwood

## *Norwood Cadillac Limousines*

Constitute a Service that is unexcelled anywhere on the Continent, and it is doubtful if any like Service in the whole world surpasses, in luxury, comfort, convenience, that provided by Buffalo's famous NORWOOD GARAGE.

**TUPPER 3447**

Day or Night Call

Call a Norwood

## THE NEW McCALL PATTERNS

## HEISER'S

*Art Goods—Dry Goods*

*Children's, Ladies' and Men's Furnishings*

INFANT WEAR A SPECIALTY

1251 FILLMORE AVE.

BUFFALO, N. Y.

Compliments of

## Cantilever Shoe Shop

641 Main Street (above Chippewa)



We specialize in fitting carefully a shoe that  
is well known for comfort, flexibility,  
economy and good looks.

All Kinds of Hats Cleaned  
and Re-Blocked

## ARLINGTON HAT SHOP.

115 Elmwood Avenue near Allen Street  
Tupper 0945

For Prompt  
Electric Service and Repairs

—  
*Call Tupper 1393*  
—

MORELCO ELECTRIC CO.  
25 Wadsworth Street

## STRALEY BROS.



*Civil Engineers  
and  
Surveyors*



Electric Building      Buffalo, N. Y.

## Frank Hammond

54-56 Seneca Street

—  
Diamonds  
Watches  
Silver  
—

*Over 50 Years Same Location*

*Clothing and Furnishings  
for  
Men, Young Men and Boys*

## The Enterprise

of Buffalo, Incorporated

*Three Stores*  
1300 Jefferson Avenue      891-893 Genesee Street  
909 Broadway

Where Quality & Style Reign Supreme

## Bacon & Vincent

49 East Swan Street

Headquarters for Prang's Drawing and Art Supplies.  
Loose Leaf Note Books, Pads, Etc. Supplementary  
Review Books in all subjects.

We Invite Your Patronage.

**Bacon & Vincent**



## PIRSON & POHLE

the home of good furniture

1425-1429 HERTEL AVE., BUFFALO, N. Y.  
Opposite North Park Theatre.

CHARGE ACCOUNTS GRANTED

## Certified Milk

"Certified Milk is the only first grade milk obtainable, and the only grade good enough to be allowed by law to be used without some sort of processing. Other grades of milk, whatever they may be termed, are but second, third or fourth grades of the most important food-stuff we have."

**Elmhurst Special Milk Company**

Telephone Bidwell 5152

114 Chenango Street, cor. Massachusetts      BUFFALO

Phone Tupper 0532

Estimates Cheerfully Given

## GREGOR BENZ

*Upholstery and Cabinet Work*

*Box Springs and Mattresses Made to Order*

289 CONNECTICUT ST.

BUFFALO, N. Y.

COMFORT — ECONOMY — ROADABILITY

# FRANKLIN

One of the big pleasures of *FRANKLIN* ownership is that feeling of complete security you have when driving. To pass another car you can even turn off the crown of a slippery road, on to the soft edge, without sacrificing either speed or safety.

## Ostendorf Motor Car Corporation

1221-1223 MAIN STREET, BUFFALO

*Splendid Values in RECONSTRUCTED FRANKLINS*  
*Attractive Prices*

## Country Bottled Milk and Cream

*Certified Milk* *Quecnalac*  
*Buttermilk* *Cottage Cheese*

The BETTER MILK at no higher price

## Queen City Dairy Company

Telephone, Seneca 3400

C. J. NAGEL, *Pres.*

J. T. MILLER, *Vice-Pres.*

G. L. WILKEN, *Sec'y-Treas.*

## CHELTENHAM PRESS

*Printers*

45 North Division Street

Buffalo, New York

TELEPHONE, SENECA 1337

*"We Strive to Please"*

Telephones Seneca 8188 and 8189

DISTRIBUTORS OF PENINSULAR PAINTS AND VARNISHES

## United Glazing Company, Inc.

ALL KINDS OF  
**GLASS**  
FOR BUILDING

Manufacturers of Mirrors

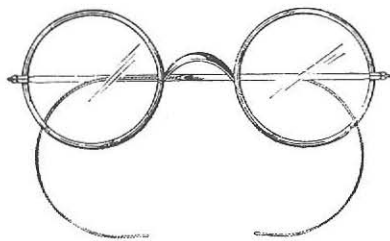
Mirrors Re-Silvered

255 GENESEE ST. and 130-136 ASH ST.

Buffalo, N. Y.



Open Monday and Saturday Evenings  
Cameras, Films, Developing



**ARTHUR J. GERMONY**  
*Optician*

317 Genesee St., at Walnut  
BUFFALO, N. Y.

**Donovan Bros.**  
Incorporated

**Dependable Druggists**

L. L. Wiles, *Manager*

412 Connecticut Street

*Our Circulating Library  
Has All the Latest Books*

**ADON RICE**  
PHARMACIST

Cor. Porter & Normal Avenues  
BUFFALO, N. Y.

*"Say it with Flowers"*

**JOHN L. KRAMER**  
**Florist**

1291 Jefferson Avenue  
BUFFALO, N. Y.

**C. H. LORISH**

129 14th STREET

*School Supplies  
Confectionery  
Ice Cream  
Notions*

**Bloomberg's**  
**Department Store**

*Best Goods at Lowest Prices  
Agents for Butterick Patterns*

372 Connecticut Street

Open Evenings      We Give Trading Stamps

## *Compliments of a Friend*

Betty's Colonial Sweets

*Home Made*

*Buy Betty's and You Buy the Best*

'Phone, Tupper 4121

Delivery

300 Jersey Street

Compliments of

Arthur A. Hornung, D. D. S.

2614 Main Street

Many Buffalo Normal Graduates secured positions through this *AGENCY* last year. Let us help *YOU*—*JOIN NOW*—no expense or obligation unless you secure a teaching position through us. Calls now on our books for Grade, High School and Special Work.

CO-OPERATIVE TEACHERS' AGENCY

Mention "The Elms" when  
you patronize our advertisers.

*Rebstock.*  
FLORIST.

'Phone, Tupper 0844    105 Elmwood Ave.

Compliments of

**M. CANTOR**

**Largest Exclusive Furrier in Buffalo**

**389 GENESEE cor. PRATT**

**LET "Opportunity Boys"**

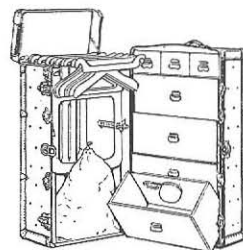
Cane Your Chairs  
Weave Your Rugs  
Make Your Brooms

**OPPORTUNITY SCHOOL**

*An Industrial School for Boys*

**Court and Franklin Streets**

**STUMM stands for**



"A bit out of the way  
but you'll find it'll pay."

**TRUNKS and  
LEATHER GOODS**

We show a complete line of  
Traveling requisites such as  
Hat Boxes, Over-Night Cases,  
both Fitted and without Fit-  
tings, Boston Bags, Brief Cases,  
Ladies Hand Bags and Bill  
Folds.

**48 EAST SENECA STREET**

**FLOWERS FOR EVERYBODY**

*Anderson*

**THE FLORIST**

**440 Main Street**

**491 Elmwood Avenue**

**BUFFALO, N. Y.**

# HENRY P. BURGARD Co.



General Contractors



1968 Fillmore Avenue . . . Buffalo, New York

*Our Motto: "Service and Quality"*

THE PURITAN  
RESTAURANT

A La Carte Service

Luncheon . . . . 50 cents  
Dinner . . . . 50 cents

*Five minutes' walk from Normal.*

230 Allen Street  
B U F F A L O, N. Y.

*"One Lunch Invites Another"*

*Kuyler's*

566 MAIN STREET  
1366 MAIN STREET

**W**HEN shopping, meet your friends at  
our tea-rooms, where dainty luncheons  
are served.

Lunches Also Served at  
350 MAIN STREET

Specially prepared foods and salads served at  
566 Main Street until 11:30 P. M.

Special Ice Cream  
Delicious Ice Cream Sodas

CLASS ROOM  
AND  
AUDITORIUM  
FURNITURE

Drafting Furniture  
Drawing Instruments  
and Supplies

**SULLIVAN-McKEEGAN CO., Inc.**  
937-945 Ellicott Square      B U F F A L O



# GEO. KRAMER & SON

*Photographers for the*  
Class of 1924

❧ *Studio:* EIGHT FIFTY SIX MAIN STREET  
BUFFALO, NEW YORK

Short Orders a Specialty

Our Prices are Reasonable

NOW OPEN FOR BUSINESS

## Connecticut Lunch

Good Things To

# EAT

---

SANITARY  
NEW  
FIRST-CLASS

---

Try Our Hot Waffles and Wheat Cakes

403 Connecticut Street  
BUFFALO, N. Y.

T. & E. Dickinson & Co., Inc.

618-620 MAIN ST.

LEADING  
JEWELERS  
AND  
SILVERSMITHS

BUFFALO, N. Y.

Gifts for the Graduate

Peter Paul & Son,

INCORPORATED

ANTHONY M. PAUL  
President and General Manager

---

STATIONERS  
*and*  
ENGRAVERS

Sorority Dance Programs and  
Stationery, Wedding Invi-  
tations and Announce-  
ments, Cards and  
Gifts for all  
occasions

256 Delaware Avenue  
above Chippewa St.

# Rock Asphalt & Construction Company

*General Contractors*

Pavements and Road Building

1104 Morgan Building

:::

:::

Buffalo, New York

# G. ELIAS & BRO., Inc.

BUFFALO

---

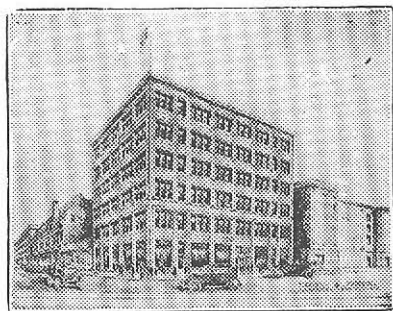
*Manufacturers of*

Timber—Lumber—Millwork—Boxes

We can supply you with all Foreign and Domestic Commercial Woods,  
in the rough, or manufactured into the finished product.

---

*We Solicit Your Inquiries*



*Home of*

## Hurst's Private School

Hurst Building: Huron and Franklin Streets  
Buffalo, N. Y.



### SPECIALTIES

Commercial, Shorthand, Type-  
writing, Applied English and  
Secretarial Work. . . . .

Owners and Users of 181 Typewriters  
School in Session entire year



*Enroll Now*

Eugene J. McCarthy  
President

Charles P. Rogers  
Sec'y-Treasurer

Founded 1826

## Beals, McCarthy & Rogers

Incorporated

IRON STEEL HARDWARE  
TOOLS and SUPPLIES  
MOTOR CAR ACCESSORIES

40-62 Terrace  
Buffalo, N. Y.

*Largest Stock in New York State*

'Phone: Jefferson 1158



## A. H. HOYLER

*Jeweler*

Diamonds and Watches

313 Genesee Street  
Buffalo, N. Y.



*Swiss Watch Repairing a Specialty*





*Like the Bubble—*  
Advertisements vanish into Nothingness  
unless accompanied by distinctive  
illustration—

*Printing Plates Quality*  
*for*  
**Catalogues.**  
**ILLUSTRATIONS**  
**and ADVERTISEMENTS**

**BUFFALO ELECTROTYPE & ENGRAVING CO.**  
*Hubert N. Perry, Owner*  
ELLCOTT AND SOUTH DIVISION STS.

# KING & EISELE CO.

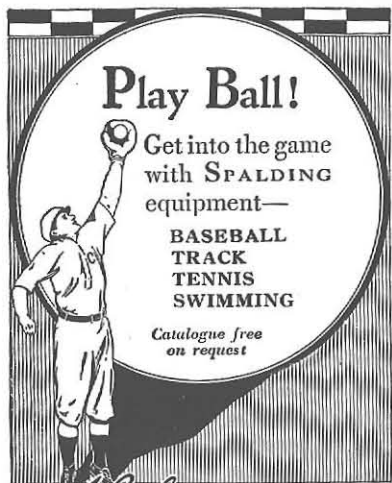
---

FRANKLIN *corner* HURON STREET

BUFFALO, N. Y.



*We Design* CLASS RINGS, CLASS PINS *and*  
*Manufacture* FRATERNITY PINS, MEDALS



**Play Ball!**

Get into the game  
with SPALDING  
equipment—

BASEBALL  
TRACK  
TENNIS  
SWIMMING

*Catalogue free  
on request*

*A. G. Spalding & Bros.*

105 Nassau St. 523 Fifth Ave.  
NEW YORK

**WILLIAM  
NEUBECKER**



*Retail Lumber  
and Millwork*



243 FRENCH STREET  
BUFFALO, NEW YORK

**Equipment**  
*for*  
**Every Cafeteria  
and Kitchen in the**  
  
**Buffalo  
Public Schools**

Manufactured by

**RUSSELL & WATSON**  
INCORPORATED

Kitchen Engineers and Manufacturers

94-96 Pearl Street

Telephone Seneca 0585

*Compliments of*

**H. D. TAYLOR CO.**

BUFFALO, NEW YORK

**"BUSY SINCE 1833"**

FIRST!

Because it has  
the confidence  
of the people

BUFFALO EVENING NEWS

# Westinghouse

## AUTOMATIC ELECTRIC RANGE

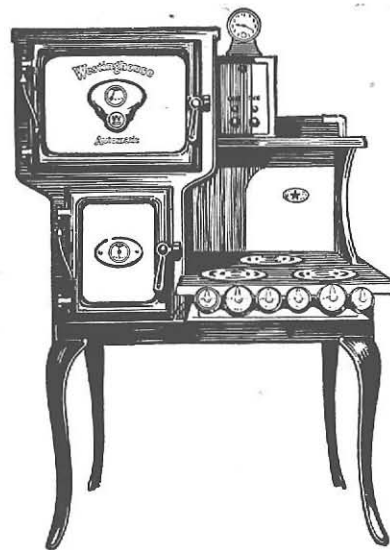
More than 3000 Westinghouse Ranges in daily use in Buffalo and vicinity, attest the absolute superiority of its unique and exclusive, yet indispensable patented features.

The clock starts the cooking — automatically with the same precision, the current is shut off. : : : :

When your requirements for convenience, economy and better cooking turn to the electric range, profit by selecting a

# Westinghouse

The Range With  
the Clock





## Faculty

Ida L. Kemper

Eileen Mucholland

Edna W. Hurd.

Charles C. Root

Alice K. Millard

Luella Chapman

Winifred E. Salome

Jennie Robson.

Amelia B. Sprague

Lucy L. Russell  
Agnes B. Ferry  
Alice C. McNally  
Marion V. Biggestaff  
Alice C. Gates  
Ruth M. Gates  
Dorothy G. Fagan  
The L. L. L.  
Alice M. Hodge  
Arlena Minekime  
Marion J. Winter  
Walter D. Ridder  
Alice S. Manning  
Jessie Cross  
Emily Hagemann '26  
Arlene Grothe '26  
Eleanore Lange '26

## Classmates

Agnes Mullarky  
Laura V. Arlington  
Kathryn M. Glor.  
Genevra Trainter  
Viola Wilke  
Adele Hauple  
Kathleen Gunn  
Dorothy Stanley '26  
Marjory J. Sullivan '26  
Dorothy E. Schnabel '26  
Lena M. Vergich  
Kathryn D. Schaad  
Helen Zeilbeer  
Helen Fowler '26  
Hajnal B. Kokar.  
Mildred J. Frank '26

Anne M. MacLoughlin

Gladys Turner  
Vivian Sparling  
Margaret McL.  
Alice O'Day  
Rosa H. Jacobs.  
Esther Humphrey  
Alice Hastings  
Alice J. Wahl  
Abie Reuman

Marion W.